



# FCC TEST REPORT

**Test report**

**On Behalf of**

**DongGuan City TianHua Photoelectric Technology Co., Ltd.**

**For**

**All in one LED Desk Lamp**

**Model No.: KX-R6NJ-JTV9**

**FCC ID: 2AU8L-KXR6NJJTV9**

**Prepared For :** DongGuan City TianHua Photoelectric Technology Co., Ltd.  
Road. 2,Jingqianling, Huangjiang, Dongguan, China

**Prepared By :** Shenzhen HUAKE Testing Technology Co., Ltd.  
1-2/F., Building B2, Junfeng Zhongcheng Zhizao Innovation Park, Heping,  
Fuhai Street, Bao'an District, Shenzhen, Guangdong, China

**Date of Test:** Feb. 14, 2022 ~ Feb. 25, 2022

**Date of Report:** Feb. 25, 2022

**Report Number:** HK2202220571-2E



## Note:

1. For a more detailed features description, please refer to the manufacturer's specifications or the User's Manual.

2.

Channel List							
Channel	Frequency (KHz)	Channel	Frequency (MHz)	Channel	Frequency (MHz)	Channel	Frequency (MHz)
01	147.5						

The EUT antenna is Coil Antenna. No antenna other than that furnished by the responsible party shall be used with the device.

## 2. SUMMARY OF TEST RESULTS

## 2.1. Test procedures according to the technical standards:

FCC KDB680106 D01 RF Exposure Wireless Charging Apps v03r01

FCC CFR 47			
Standard Section	Test Item	Judgment	Remark
FCC CFR 47 part1, 1.1310 KDB680106 D01v03r01 (3)(3)	Electric Field Strength (E) (V/m)	PASS	
	Magnetic Field Strength (H) (A/m)	PASS	

## 2.2. Measurement Uncertainty

The reported uncertainty of measurement  $y \pm U$ , where expanded uncertainty  $U$  is based on a standard uncertainty multiplied by a coverage factor of  $k=2$ , providing a level of confidence of approximately 95 %.

No.	Item	Uncertainty
1	All emissions, radiated(<30M)(9KHz-30MHz)	$\pm 3.90\text{dB}$
2	Temperature	$\pm 0.5^\circ\text{C}$
3	Humidity	$\pm 2\%$

**2.3. Test Instruments**

Description	Brand	Model No.	Frequency Range	Calibrated Date	Calibrated Until
Exposure Level Tester	narda	ELT-400	N-0231	Dec. 09, 2021	Dec. 08, 2022
Magnetic field probe 100cm <sup>2</sup>	narda	ELT probe 100cm <sup>2</sup>	M0675	Dec. 09, 2021	Dec. 08, 2022

NOTE: 1. The calibration interval of the above test instruments is 12 months.



### 3. MAXIMUM PERMISSIBLE EXPOSURE

#### Limit of Maximum Permissible Exposure

Limits for Occupational / Controlled Exposure				
Frequency Range (MHz)	Electric Field Strength (E) (V/m)	Magnetic Field Strength (H) (A/m)	Power Density (S) (mW/ cm <sup>2</sup> )	Averaging Time  E  <sup>2</sup> , H  <sup>2</sup> or S (minutes)
0.3-3.0	614	1.63	(100)*	6
3.0-30	1842 / f	4.89 / f	(900 / f)*	6
30-300	61.4	0.163	1.0	6
300-1500			F/300	6
1500-100,000			5	6
Limits for General Population / Uncontrolled Exposure				
Frequency Range (MHz)	Electric Field Strength (E) (V/m)	Magnetic Field Strength (H) (A/m)	Power Density (S) (mW/ cm <sup>2</sup> )	Averaging Time  E  <sup>2</sup> , H  <sup>2</sup> or S (minutes)
0.3-1.34	614	1.63	(100)*	30
1.34-30	824/f	2.19/f	(180 / f)*	30
30-300	27.5	0.073	0.2	30
300-1500			F/1500	30
1500-100,000			1	30

Note 1: f = frequency in MHz ; \*Plane-wave equivalent power density.

Note 2: For the applicable limit, see FCC 1.1310, 680106 D01 RF Exposure Wireless Charging Apps v03.

Note 3: Emissions between 100 kHz to 300 kHz should be assessed versus the limits at 300 kHz in Table 1 of Section 1.1310: 614 V/m and 1.63A/m. A KDB inquiry is required to determine the applicable exposure limits below 100 kHz.

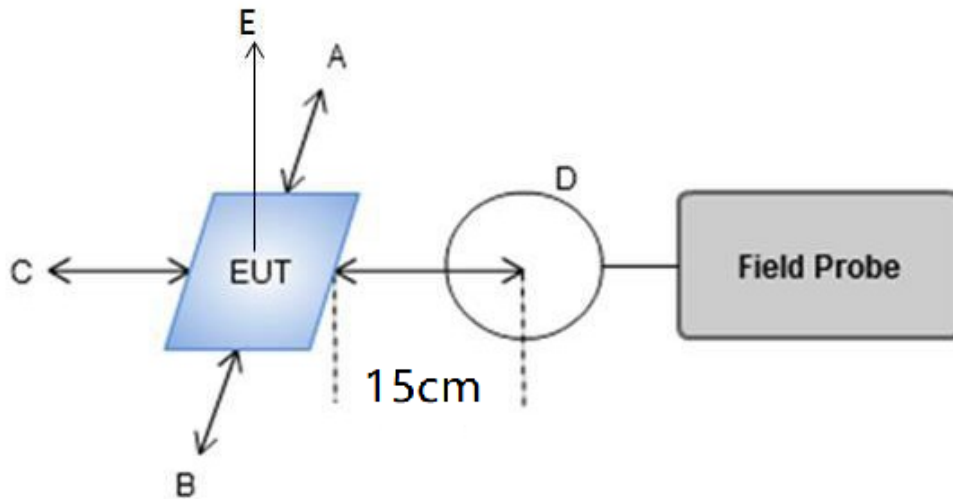


#### 4. TEST PROCEDURE

a. For devices designed for typical desktop applications, such as wireless charging pads, RF exposure evaluation should be conducted assuming a user separation distance of (H-field & E-field strengths for all sides is 15cm, H-field strengths of top side is 20cm).

E and H field strength measurements or numerical modeling may be used to demonstrate compliance. Measurements should be made from all sides and the top of the primary/client pair, with the 15 cm measured from the center of the probe(s) to the edge of the device.

##### 4.1 Test Setup



##### 4.2 Result Of Maximum Permissible Exposure



For Full load mode:

H-Field Strength at 15 cm (E top side: 20cm) from the edges surrounding the EUT (A/m)

Field strength	Test Position A	Test Position B	Test Position C	Test Position D	Test Position E	Limits (A/m)
uT	0.569	0.445	0.391	0.403	0.512	/
A/m	0.455	0.356	0.313	0.322	0.410	1.63

Note.

Calculation:  $A/m = uT/1.25$

For Half Load mode:

H-Field Strength at 15 cm (E top side: 20cm) from the edges surrounding the EUT (A/m)

Field strength	Test Position A	Test Position B	Test Position C	Test Position D	Test Position E	Limits (A/m)
uT	0.391	0.258	0.462	0.509	0.488	/
A/m	0.313	0.206	0.370	0.407	0.390	1.63

Note.

Calculation:  $A/m = uT/1.25$

For No load mode:

H-Field Strength at 15 cm (E top side: 20cm) from the edges surrounding the EUT (A/m)

Field strength	Test Position A	Test Position B	Test Position C	Test Position D	Test Position E	Limits (A/m)
uT	0.530	0.483	0.417	0.498	0.545	/
A/m	0.424	0.386	0.334	0.398	0.436	1.63

Note.

Calculation:  $A/m = uT/1.25$



Remark: According KDB 680106 D01 RF Exposure Wireless Charging App v03, section 5, b). The aggregate H-field strengths at 15 cm surrounding the device and 20 cm above the top surface from all simultaneous transmitting coils are demonstrated to be less than 50% of the MPE limit. The E- field evaluation conducted assuming a user separation distance of 15 cm according to the KDB 680106 D01 RF Exposure Wireless Charging App v03 section 3, c).

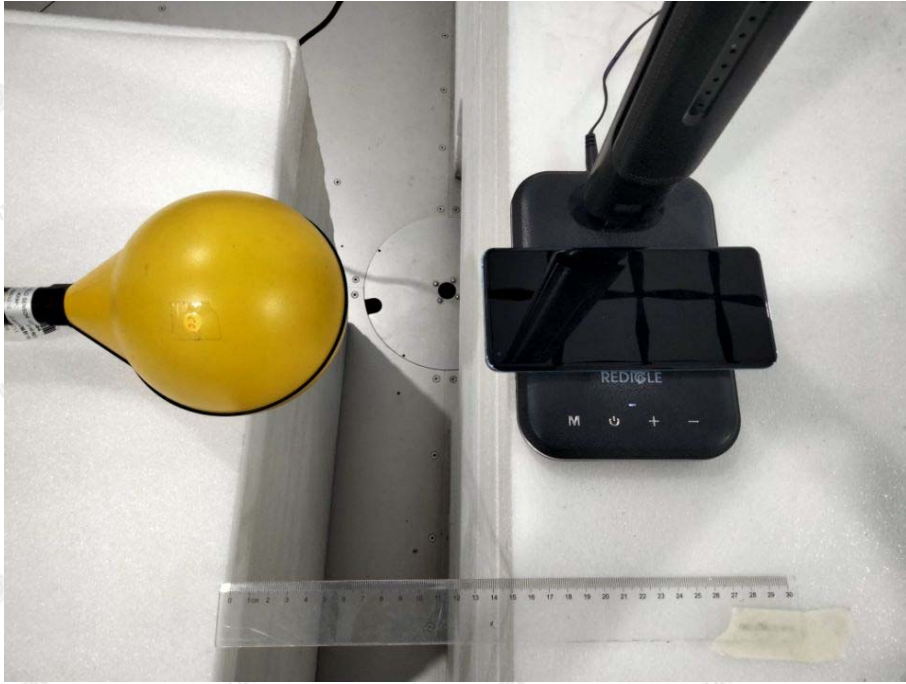
Result: The device comply with the RF exposure requirement according to 680106 D01 v03, section 5, b):

- (1) The operating frequency is 114KHz~149KHz, is less than 1MHz.
- (2) The max Output power for each primary coil is 10W,  $\leq$  15W.
- (3) The system may consist of more than one source primary coils, charging one or more clients. If more than one primary coil is present, the coil pairs may be powered on at the same time.
- (4) Client device is placed directly in contact with the transmitter.
- (5) The aggregate H-field strengths at 15 cm surrounding the device and 20 cm above the top surface from all simultaneous transmitting coils are demonstrated to be less than 50% of the MPE limit.
- (6) This device is used for mobile exposure conduction only.

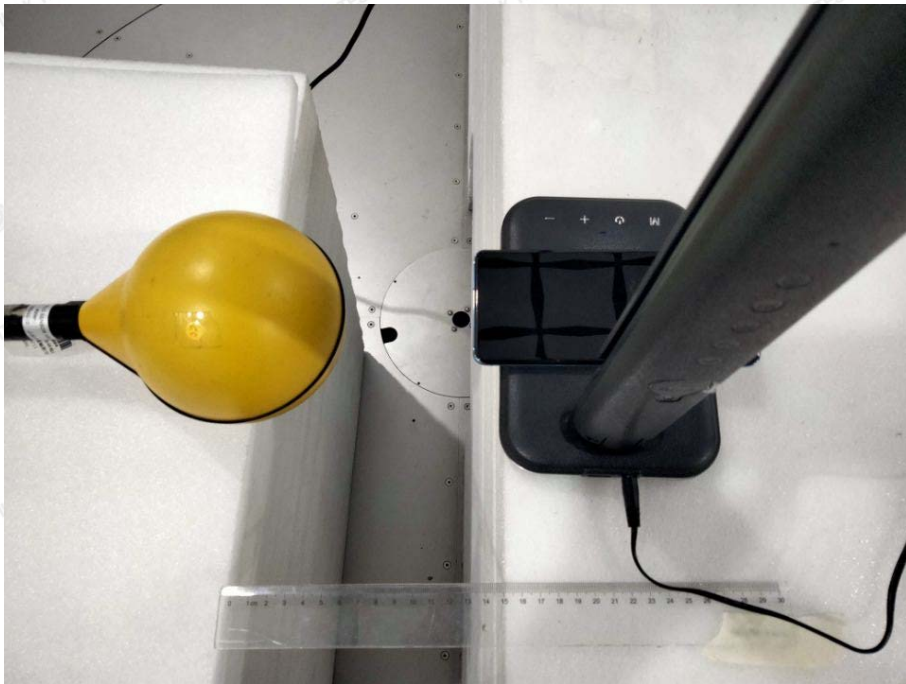


## PHOTOGRAPH OF TEST

A



B



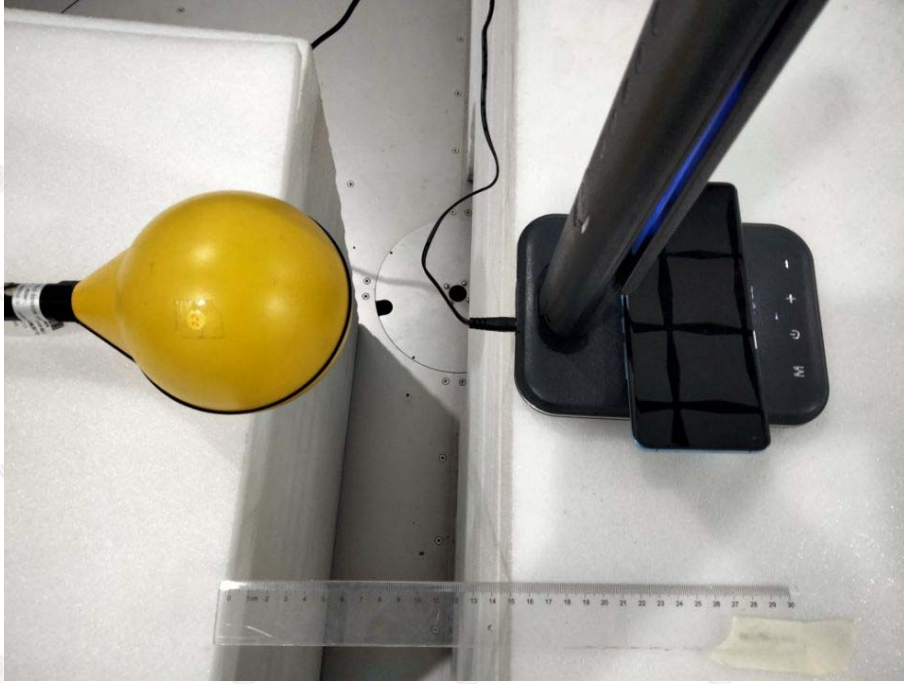
The results shown in this test report refer only to the sample(s) tested unless otherwise stated and the sample(s) are retained for 30 days only. The document is issued by HUAKE, this document cannot be reproduced except in full with our prior written permission. The more details and the authenticity of the report will be confirmed at <http://www.cer-mark.com>.

HUAKE Testing Lab TEL : +86-755 2302 9901 FAX : +86-755 2302 9901 E-mail : service@cer-mark.com

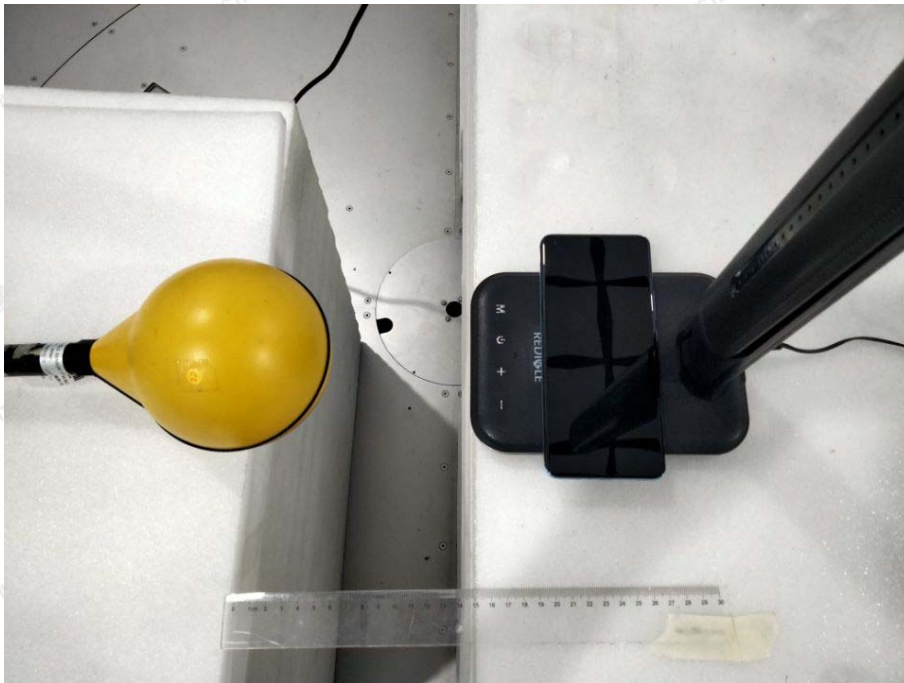
1-2/F., Building B2, Junfeng Zhongcheng Zhizao Innovation Park, Heping, Fuhai Street, Bao'an District, Shenzhen, Guangdong, China



C



D



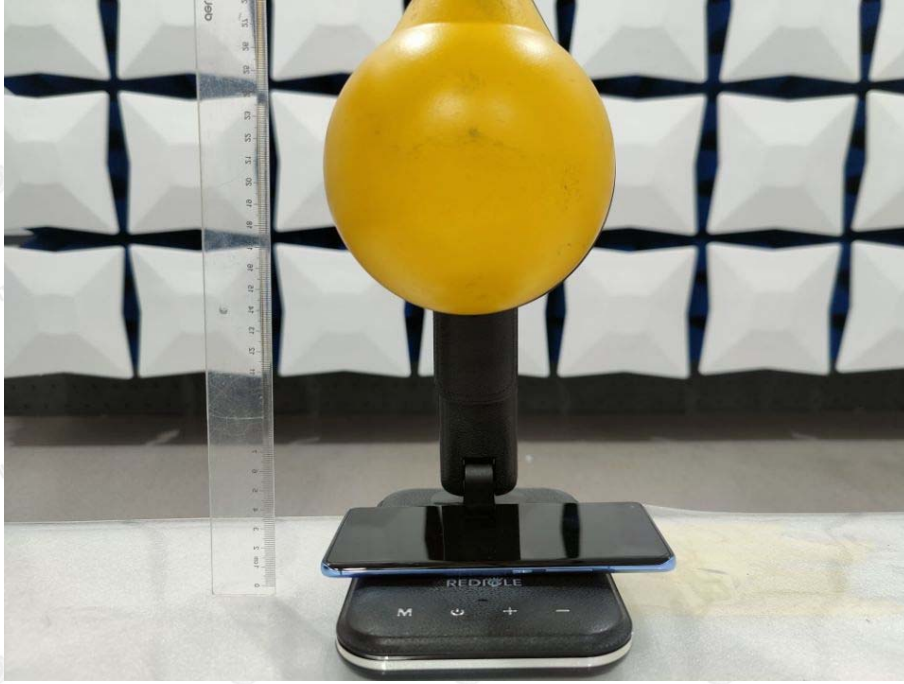
The results shown in this test report refer only to the sample(s) tested unless otherwise stated and the sample(s) are retained for 30 days only. The document is issued by HUAKE, this document cannot be reproduced except in full with our prior written permission. The more details and the authenticity of the report will be confirmed at <http://www.cer-mark.com>.

HUAKE Testing Lab TEL : +86-755 2302 9901 FAX : +86-755 2302 9901 E-mail : [service@cer-mark.com](mailto:service@cer-mark.com)

1-2/F., Building B2, Junfeng Zhongcheng Zhizao Innovation Park, Heping, Fuhai Street, Bao'an District, Shenzhen, Guangdong, China



E



※※※※※THE END※※※※※