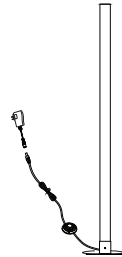


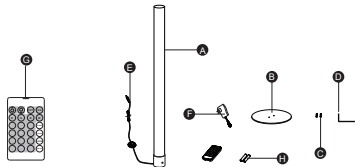
**Dewenwils**  
**LED Floor Lamp**  
Instruction Manual  
SKU: HLFL02D



Thank you for your purchase.  
Please contact us if you have any questions,  
and we will get back to you within 24 hours.

Please attach your Order ID so that we can serve you better.

**Packing List**



Part	Description	Quantity
A	Column Floor Lamp	1
B	Base	1
C	Screw	2
D	Screwdriver	1
E	Adapter Connector	1
F	Adapter	1
G	Remote Control	1
H	AAA Battery (Installed)	2
I	Instruction Manual	1

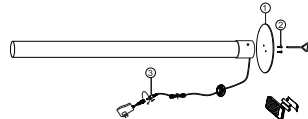
**Caution**

1. Before assembly, place all parts out on a clean flat surface and inspect each part for defects that may have occurred during shipping.
2. Inspect wire insulation for any cuts, abrasions or exposed copper that may have resulted during shipping. If there are any

- defects in the wire, DO NOT continue assembly. Please send an email to our Customer Service immediately.
3. Consult a qualified electrician if you have any electrical questions.
4. Never drape clothes over the lamp.
5. To reduce the likelihood of tipping over, we recommend placing the lamp behind furniture and keep children and pets away.
6. To prevent children from suffocating and choking, keep them away from packing materials.

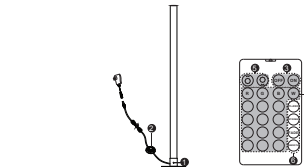
**Assembly Instructions**

Before assembly, compared the accessories with the packing listing to make sure all parts are present, install the adapter first to check if product functions as intended.



1. Align the screw holes of the Base (B) with the screw holes at the bottom of the Column Floor Lamp (A) and fix them with Screws (C).
2. Connect the Adapter Connector (E) to the Adapter (F) and then spin the lock of the Adapter.
3. Place the floor lamp where you need it and plug it into the power supply.

**Function**



1. Signal Receiver
2. On/Off Foot Switch
3. On/Off Switch
4. 16 Colors
5. Dimmer -- 5 Brightness Levels
6. Color Mode -- FLASH / STROBE / FADE / SMOOTH
7. Remote Control
8. WiFi Smart Control

**Note**

- Make sure the Remote Control within line of sight when using any function, it only transmits a straightforward IR signal to Signal Receiver (1).
- - The remote control will work within 20ft without obstacles; the IR signal cannot pass through glass or walls.

**Specifications**

- Product Height: 48 IN.
- Base Diameter: 6.9 IN.
- Materials: Plastic & Metal
- Input Voltage: 100-240VAC, 60Hz
- Voltage of Remote: DC 3V (2 x 1.5V AAA Battery)
- Operating Range: 20 FT



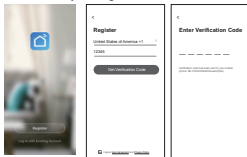
**WiFi Smart Control Instruction**  
**Software Installation**

Scan QR Code or search "Smart Life" in Google Play or the App store to download and install the Smart Life APP.

**Register**

If you don't have an APP account, register an account or sign in with (a) verification code by SMS.

1. Tap to enter the registration page
2. The system automatically recognizes your country/ area. You can also select your country code. Enter the mobile number/ E-mail and tap "Next"
3. If you enter the mobile number, then enter the verification code in the message, as shown in the picture, and enter the password, tap "Confirm" to finish your registration



**Note:** Each device can only be connected to one account. If anyone else needs to control it, please share your device via the APP.

**Choose Device to Add**

1. Plug the Adapter plug into a socket.
2. Sign in your account and tap the "Add Device" button on the middle of the APP, then choose the "Socket (Wi-Fi)".



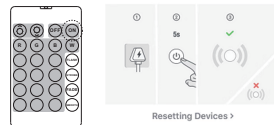
**3. Reset the Device**

Option A. Reset the device via remote control

Step A-1: Power on the foot switch

Step A-2: Long press "ON" button of the remote control for 5 seconds

Step A-3: Ensure the light blinking fast



Option B. Reset the device via foot switch

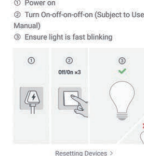
Step B-1: Power on the foot switch

Step B-2: Turn the switch on-off-on-off-on-off-on (on-off 3 times)

Step B-3: Ensure the light blinking fast

**Reset the device first.**

- If the light is blinking fast, skip the reset step
- ① Power on
  - ② Turn On-off-on-off-on (Subject to User Manual)
  - ③ Ensure light is fast blinking

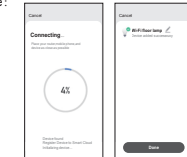


4. Select the Wi-Fi that the floor lamp will connect to; Enter the Wi-Fi password and confirm; as shown in the figure:

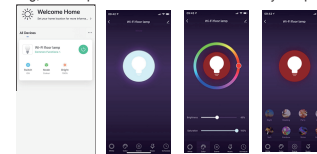


**Note:** Wi-Fi Column Floor Lamp configuration only supports a 2.4GHz Wi-Fi network. When work with a 5GHz router supports both 2.4GHz and 5GHz network at the same time, please make sure the names of the networks are different, and then connect to the 2.4GHz network.

5. The App will proceed with the connection process, as shown in the figure:



6. After the connection process completed and the light stopped blinking, the Lamp has been connected and is ready for operation.



The device is now visible inside the APP overview and can be controlled.

The light color and brightness can be adjusted via the APP by now.

**Note:** The APP and Remote Control can be used simultaneously. **One-year Limited Warranty**

Dewenwils warrants this product to be free from defects in material and workmanship for a period of one year from the date of purchase. Warranty will be void if the damage is due to misuse or improper installation. Please contact us if you have any questions.

**IC Statement**

This device contains licence-exempt transmitter(s)/receiver(s) that comply with Innovation, Science and Economic Development Canada's licence-exempt RSS(s). Operation is subject to the following two conditions:

(1) This device may not cause interference.

(2) This device must accept any interference, including interference that may cause undesired operation of the device.

The term "IC" before the certification/registration number only signifies that the Industry Canada technical specifications were met.

This product meets the applicable Industry Canada technical specifications.

Cet appareil contient des émetteurs / r écepteurs exempt é s de licence conformes aux RSS (RSS) d'Innovation, Sciences etD é veloppement é conomique Canada. L'exploitation est autoris é e aux deux conditions suivantes : (1) l'appareil ne doit pasproduire de brouillage,et (2) l'utilisateur de l'appareil doit accepter tout brouillage radio é lectrique subi, m é me si le brouillage est susceptible d'en compromettre le fonctionnement.

L' é metteur/ r é cepteur exempt de licence contenu dans le pr é sent appareil est conforme auxCNR d'Innovation, Sciences et D é veloppement é conomique Canada applicables aux appareils radio exempts de licence.

L'exploitation est autoris é e aux deux conditions suivantes :

1) L'appareil ne doit pas produire de brouillage;

2) L'appareil doit accepter tout brouillage radio é lectrique subi, m é me si le brouillage est susceptible d'en compromettre le fonctionnement.

This transmitter must not be co-located or operating in conjunction with any other antenna ortransmitter. This equipment should be installed and operated with a minimum distance of 20centimeters between the radiator and your body.

Cet é metteur ne doit pas é tre Co-plac é ou ne fonctionnant en m é me temps qu'aucune autre antenne ou é metteur. Cet é quipementdevrait é tre install é et actionn é avec une distance minimum de 20 centim é tres entre le radiateur et votre corps.

**FCC Statement**

Changes or modifications not expressly approved by the party responsible for compliance could void the user's authority to operate the equipment.

This equipment has been tested and found to comply with the limits for a Class B digital device, pursuant to Part 15 of the FCC Rules. These limits are designed to provide reasonable protection against harmful interference in a residential installation. This equipment generates uses and can radiate radio frequency energy and, if not installed and used in accordance with the instructions, may cause harmful interference to radio communications. However, there is no guarantee that interference will not occur in a particular installation. If this equipment does cause harmful interference to radio or television reception, which can be determined by turning the equipment off and on, the user is encouraged to try to correct the interference by one or more of the following measures:

-- Reorient or relocate the receiving antenna.

-- Increase the separation between the equipment and receiver.

-- Connect the equipment into an outlet on a circuit different from that to which the receiver is connected.

-- Consult the dealer or an experienced radio/TV technician for help

This device complies with part 15 of the FCC rules. Operation is subject to the following two conditions (1) this device may not cause harmful interference, and (2) this device must accept any interference received, including interference that may cause undesired operation.

This equipment complies with FCC radiation exposure limits set forth for an uncontrolled environment. This equipment should be installed and operated with minimum distance 20cm between the radiator & your body.

Changes or modifications not expressly approved by the party responsible for compliance could void the user's authority to operate the equipment.

This equipment has been tested and found to comply with the limits for a Class B digital device, pursuant to Part 15 of the FCC Rules. These limits are designed to provide reasonable protection against harmful interference in a residential installation. This equipment generates uses and can radiate radio frequency energy and, if not installed and used in accordance with the instructions, may cause harmful interference to radio communications. However, there is no guarantee that interference will not occur in a particular installation. If this equipment does cause harmful interference to radio or television reception, which can be determined by turning the equipment off and on, the user is encouraged to try to correct the interference by one or more of the following measures:

-- Reorient or relocate the receiving antenna.

-- Increase the separation between the equipment and receiver.

-- Connect the equipment into an outlet on a circuit different from that to which the receiver is connected.

-- Consult the dealer or an experienced radio/TV technician for help

This device complies with part 15 of the FCC rules. Operation is subject to the following two conditions (1) this device may not cause harmful interference, and (2) this device must accept any interference received, including interference that may cause undesired operation.

This equipment complies with FCC radiation exposure limits set forth for an uncontrolled environment. This equipment should be installed and operated with minimum distance 20cm between the radiator & your body.