



# 10 W 3-in-1 Wireless Charging Mount

## User manual

Model No. 035-7330-0

This charging mount allows you enjoy fast wireless charging easily. Please read the user manual before using and keep it for future reference.

### Specifications:

Input: DC 5 V 2A, 9 V/1.67 A

Output: 10 W/7.5 W/5 W

Frequency: 114.48KHz - 146.47KHz

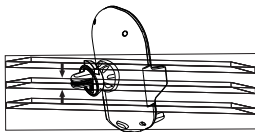
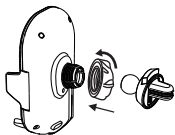
Charge efficiency:  $\geq 70\%$

Charging distance:  $\leq 8$  mm

### Installation instructions:

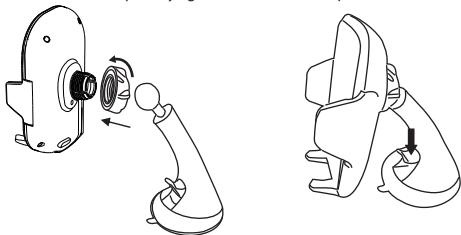
#### a: Vent mounting

1. Loosen the socket on the back of the charging mount. Firmly snap in the ball and tighten the socket.
2. Snap the clamp onto the air vent and adjust to your preferred viewing angle.



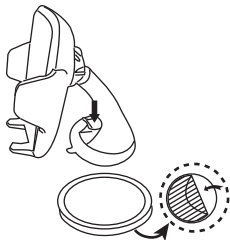
### **b: Windshield mounting**

1. Clean the windshield where the suction cup will be applied.
2. Loosen the socket on the back of the charging mount. Firmly snap in the ball and tighten the socket.
3. Push suction cup firmly against windshield and press lever to lock



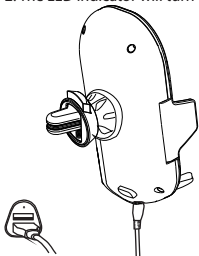
### **b: Dashboard mounting**

1. Clean the dashboard where the disc will be applied.
2. Apply the holder to the disc, then remove adhesive backing from the bottom of disc.
3. Use adhesive tape to mount the disc to the dashboard.



## Connecting to power supply:

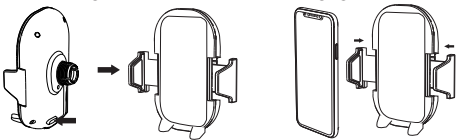
1. Connect USB 2.0 port to the car charger, and micro USB port to the wireless car charger.
2. The LED indicator will turn to red, entering into standby mode.



**Note:** To activate fast wireless charging mode, please use QC 2.0/QC 3.0 car charger. You are recommended to use the USB cable featured in product package.

## Wireless Charging function:

1. Make sure the mount is connected to a power supply, and is in standby status.
2. Press the release button to open the clamp. Place the phone inside the mount, close the clamp to lock the device with your finger. The indicator light will turn to blue and start charging.



**Note:** If the phone case is metal, please take off the phone case before charging. Do not use phone cases thicker than 5 mm (3/16") for wireless charging.

## **Warning:**

1. Do not squeeze or collisions.
2. Do not disassemble or throw into fire or water to avoid causing short circuit leakage.
3. Do not use wireless charger in hot, humid or corrosive environments to avoid damage.
4. Do not place wireless charger close to magnetic stripe or chip card(ID card, bank card, etc.) to avoid magnetic failure.
5. Please keep the wireless charger at least 20 cm (7 7/8") from the implantable medical devices (heart pacemakers, implantable cochlea, etc.) to avoid potential interference of the medical devices.
6. It is normal for the product to be warm after charging. Charging in high temperatures will reduce the charging efficiency. Charge in cool temperatures.

This device complies with Part 15 of the FCC Rules.Operation is subject to the following two conditions:

1. This device may not cause harmful interference.

The 'Qi' symbol is a trademark of the Wireless Power Consortium.



Product must be recycled or disposed of properly. Dispose of as per the requirements of your local municipality

Made in China

Imported by Trileaf Distribution Toronto, Canada M4S 2B8

## **FCC Statement :**

Changes or modifications not expressly approved by the party responsible for compliance could void the user's authority to operate the equipment.

This equipment has been tested and found to comply with the limits for a Class B digital device, pursuant to Part 15 of the FCC Rules.

These limits are designed to provide reasonable protection against harmful interference in a residential installation. This equipment generates uses and can radiate radio frequency energy and, if not installed and used in accordance with the instructions, may cause harmful interference to radio communications. However, there is no guarantee that interference will not occur in a particular installation. If this equipment does cause harmful interference to radio or television reception, which can be determined by turning the equipment off and on, the user is encouraged to try to correct the interference by one or more of the following measures:

- Reorient or relocate the receiving antenna.
- Increase the separation between the equipment and receiver.
- Connect the equipment into an outlet on a circuit different from that to which the receiver is connected.
- Consult the dealer or an experienced radio/TV technician for help

This device complies with part 15 of the FCC rules. Operation is subject to the following two conditions (1) this device may not cause harmful interference, and (2) this device must accept any interference received, including interference that may cause undesired operation.

This equipment complies with FCC radiation exposure limits set forth for an uncontrolled environment. This equipment should be installed and operated with minimum distance 20cm between the radiator & your body