

Temperature & Humidity Smart Sensor

INSTRUCTION



Contents of Package

- ✓ Sensor x1
- ✓ Lanyard x1
- ✓ Back clip x1
- ✓ 3M tape x1
- ✓ Bracket x1

Main Function

- ✓ Real-time monitoring temperature and humidity.
- ✓ Push notifications when the temperature or humidity exceed the limits.
- ✓ Calibrate temperature and humidity.
- ✓ Chart graph display.
- ✓ Save and export data.
- ✓ Kinds of accessories for easily installation.

Specifications

Battery: CR2477 3V 1000mAh
Standby current: ≤3uA
Protocol: bluetooth5.0
Wireless Range: 50m
Operating Temperature: -20°C ~ 85°C (-4°F ~ 185°F)
Operating Humidity: 0% ~ 95%
Temperature Accuracy: ±0.3°C ~ ±1.2°C / (±0.5°F ~ ±2.2°F)
Humidity Accuracy: ±3% ~ ±5%
Working time: About 18 months
Wireless Type : 2.4GHz
Size: 46mm x46mm x15 mm

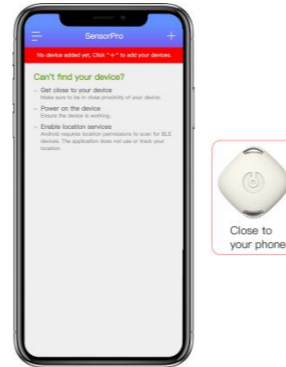
Download App

- ✓ Download "SensorPro" app from app store or google play.



Add Device

1. Remove the battery insulation sheet of the sensor;
2. Run "SensorPro" app on your smart phone ;
3. Take the device close to your phone;
4. Click "+" to add device to app;



This device complies with part 15 of the FCC Rules. Operation is subject to the following two conditions: (1) This device may not cause harmful interference, and (2) this device must accept any interference that may cause undesired operation. Any Changes or modifications not expressly approved by the party responsible for compliance could void the user's authority to operate the equipment.

Note: This equipment has been tested and found to comply with the limits for a Class B digital device, pursuant to part 15 of the FCC Rules. These limits are designed to provide reasonable protection against harmful interference in a residential installation. This equipment generates, uses and can radiate radio frequency energy and, if not installed and used in accordance with the instructions, may cause harmful interference to radio communications. However, there is no guarantee that interference will not occur in a particular installation. If this equipment does cause harmful interference to radio or television reception, which can be determined by turning the equipment off and on, the user is encouraged to try to correct the interference by one or more of the following measures:

- Reorient or relocate the receiving antenna.
- Increase the separation between the equipment and receiver.
- Connect the equipment into an outlet on a circuit different from that to which the receiver is connected.
- Consult the dealer or an experienced radio/TV technician for help.

This equipment complies with FCC radiation exposure limits set forth for an uncontrolled environment. This equipment should be installed and operated with minimum distance 20cm between the radiator & your body.

Device setting

1. Click the device item on the gray area to go to device setting;
2. Click the camera icon to customize your scenes picture.
3. Click Delete button to remove the device.

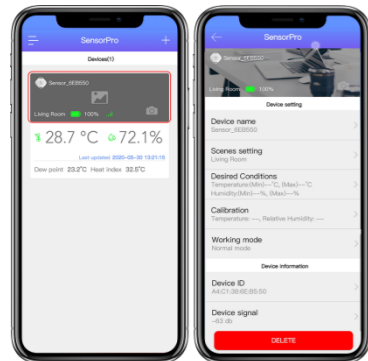


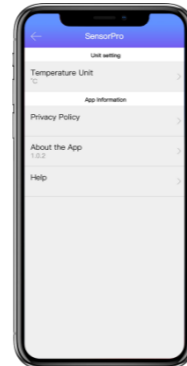
Chart display

Click the data area on the device item to show the history data chart.



Unit Switching

Click ☰ to go App setting screen.
 The temperature unit can be set as Fahrenheit (°F) or Celsius (°C).



Accessories

Kinds of accessories to help you to install the device in different scenes.

