



Report No.: EA1912071F 01001

1 of 36

**ELECTROMAGNETIC EMISSIONS COMPLIANCE REPORT
INTENTIONAL RADIATOR CERTIFICATION TO
FCC PART 15 SUBPART C REQUIREMENT**

OF

Wireless Charging Pad

Model No.: IHQI006

Trademark: iHome

FCC ID: 2AU7DIHQI1076

Report No.: EA1912071F 01001

Issue Date: Dec. 31, 2019

Prepared for

**Shenzhen PYS Industrial Co., LTD
Building 9th, Lianhua Industrial Zone, Longyuan Road, Longhua
Street, Longhua District, Shenzhen**

Prepared by

Dong Guan Anci Electronic Technology Co., Ltd.

**1-2 Floor, Building A, No.11, Headquarters 2 Road, Songshan, Lake
Hi-tech Industrial Development Zone, Dongguan City, evelopment
Zone, Dongguan City, Guangdong Pr., China.**

**This report shall not be reproduced, except in full, without the written approval of
Dong Guan Anci Electronic Technology Co., Ltd.**



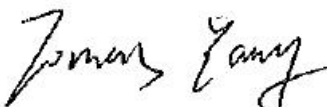
VERIFICATION OF COMPLIANCE


Applicant:	Shenzhen PYS Industrial Co., LTD Building 9th, Lianhua Industrial Zone, Longyuan Road, Longhua Street, Longhua District, Shenzhen
Manufacturer:	Shenzhen PYS Industrial Co., LTD Building 9th, Lianhua Industrial Zone, Longyuan Road, Longhua Street, Longhua District, Shenzhen
Product Description:	Wireless Charging Pad
Trade Mark:	iHome
Model Number:	IHQI006

We hereby certify that:

The above equipment was tested by Dong Guan Anci Electronic Technology Co., Ltd. The test data, data evaluation, test procedures, and equipment configurations shown in this report were made in accordance with the procedures given in ANSI C63.10-2013 and the energy emitted by the sample EUT tested as described in this report is in compliance with conducted and radiated emission limits of FCC Rules Part 15.209.

Date of Test : Dec. 07, 2019 to Dec. 31, 2019

Prepared by : 
Tomas Yang/Supervisor

Reviewer &
Authorized Signer : 
Alan He/Manager



Report No.: EA1912071F 01001

3 of 36

Modified Information

Version	Summary	Revision Date	Report No.
Ver.1.0	Original Report	/	EA1912071F 01001



Table of Contents

1 GENERAL INFORMATION.....	5
1.1 PRODUCT DESCRIPTION.....	5
1.2 RELATED SUBMITTAL(S) / GRANT(S).....	6
1.3 TEST METHODOLOGY.....	6
1.4 SPECIAL ACCESSORIES.....	6
1.5 EQUIPMENT MODIFICATIONS.....	6
1.6 TEST FACILITY.....	6
2 SYSTEM TEST CONFIGURATION.....	7
2.1 EUT CONFIGURATION.....	7
2.2 EUT EXERCISE.....	7
2.3 TEST PROCEDURE.....	7
2.4 CONFIGURATION OF TESTED SYSTEM.....	8
3 SUMMARY OF TEST RESULTS.....	8
4 CONDUCTED EMISSIONS TEST.....	9
4.1 MEASUREMENT PROCEDURE.....	9
4.2 TEST SET-UP (BLOCK DIAGRAM OF CONFIGURATION).....	9
4.3 MEASUREMENT EQUIPMENT USED.....	9
4.4 CONDUCTED EMISSION LIMIT.....	9
4.5 MEASUREMENT RESULT.....	10
4.6 CONDUCTED MEASUREMENT PHOTO.....	15
5 RADIATED EMISSION TEST.....	16
5.1 MEASUREMENT PROCEDURE.....	16
5.2 TEST SET-UP (BLOCK DIAGRAM OF CONFIGURATION).....	16
5.3 MEASUREMENT EQUIPMENT USED.....	17
5.4 RADIATED EMISSION LIMIT.....	17
5.5 MEASUREMENT RESULT.....	19
5.6 RADIATED MEASUREMENT PHOTOS.....	25
6 20DB BANDWIDTH.....	26
6.1 20dB BANDWIDTH LIMIT.....	26
6.2 TEST INSTRUMENTS.....	26
6.3 TEST PROCEDURE.....	26
6.4 TEST SETUP.....	26
6.5 TEST RESULT.....	26
7 ANTENNA APPLICATION.....	28
7.1 ANTENNA REQUIREMENT.....	28
7.2 RESULT.....	28



1 General Information

1.1 Product Description

Characteristics	Description
Product Name	Wireless Charging Pad
Model number	IHQI006
Operation Mode	Wireless Charging
Input Rating	DC 5V/2A or DC 9V/1.67A
Power Supply	AC120V/60Hz for adapter
Operating Frequency	110-205KHz
Wireless Charging Power	10W Max(Backward compatible with 5W)
Modulation Technique	ASK
Antenna Type	Induction coil



1.2 Related Submittal(s) / Grant(s)

This submittal(s) (test report) is intended for FCC ID: 2AU7DIHQI1076 filing to comply with the FCC Part 15, Subpart C Rules.

1.3 Test Methodology

Both conducted and radiated testing was performed according to the procedures in ANSI C63.10 (2013). Radiated testing was performed at an antenna to EUT distance 3 meters.

1.4 Special Accessories

Not available for this EUT intended for grant.

1.5 Equipment Modifications

Not available for this EUT intended for grant.

1.6 Test Facility

Site Description
EMC Lab. : Accredited by CNAS, 2017.06.26
The certificate is valid until 2022.10.28
The Laboratory has been assessed and proved to be in compliance with
CNAS-CL01:2006 (identical to ISO/IEC 17025:2005)
The Certificate Registration Number is L0468.

Accredited by A2LA, 2018.03.15
The Certificate Number is 4422.01.

Name of Firm : Dong Guan Anci Electronic Technology Co., Ltd.
Site Location : 1-2 Floor, Building A, No.11, Headquarters 2 Road, Songshan, Lake
Hi-tech Industrial Development Zone, Dongguan City, development Zone,
Dongguan City, Guangdong Pr., China.

2 System Test Configuration

2.1 EUT Configuration

The EUT configuration for testing is installed on RF field strength measurement to meet the Commissions requirement and operating in a manner which intends to maximize its emission characteristics in a continuous normal application.

2.2 EUT Exercise

The Transmitter was operated in the normal operating mode. The TX frequency was fixed which was for the purpose of the measurements.

2.3 Test Procedure

2.3.1 Conducted Emissions

The EUT is a placed on as turn table which is 0.8 m above ground plane. According to the requirements in Section 13.1.4.1 of ANSI C63.10-2013 Conducted emissions from the EUT measured in the frequency range between 0.15 MHz and 30 MHz using CISPR Quasi-Peak and average detector mode.

2.3.2 Radiated Emissions

The EUT is a placed on as turn table which is 0.8 m above ground plane. The turn table shall rotate 360 degrees to determine the position of maximum emission level. EUT is set 3m away from the receiving antenna which varied from 1m to 4m to find out the highest emission. And also, each emission was to be maximized by changing the polarization of receiving antenna both horizontal and vertical. In order to find out the max. emission, the fixed in a particular direction according to the requirements in Section 13.1.4.1 of ANSI C63.10-2013.

2.4 Configuration of Tested System

Fig. 2-1 Configuration of Tested System

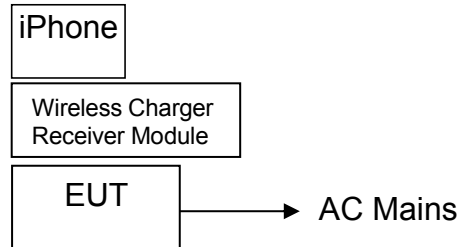


Table 2-1 Equipment Used in Tested System

Item	Equipment	Trade Mark	Model No.	FCC ID	Note
1.	Wireless Charging Pad	Raffel Systems	IHQI006	2AU7DIHQI1076	EUT
2.	Adapter	MI	Model:MDY-08-EH Input: AC 100-240V, 50/60Hz Output: DC 5V/2.5A,DC 9/2A	N/A	Support EUT
3.	iPhone	Apple	A1524	N/A	Support Equipment
4.	SAMSUNG S9	SAMSUNG	Samsung Galaxy S9	N/A	Support Equipment
5.	Wireless Charger Receiver Module	Universal	N/A	N/A	Support Equipment

Note:

- (1) Unless otherwise denoted as EUT in 『Remark』 column, device(s) used in tested system is a support equipment.

3 Summary of Test Results

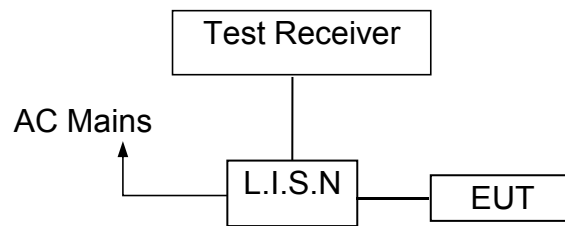
FCC Rules	Description Of Test	Result
§15.207	AC Power Conducted Emission	Compliant
§15.209	Radiated Emission	Compliant
§2.1049	20dB Bandwidth	Compliant
§15.203	Antenna Requirement	Compliant

4 Conducted Emissions Test

4.1 Measurement Procedure

1. The EUT was placed on a table which is 0.8m above ground plane.
2. Maximum procedure was performed on the six highest emissions to ensure EUT compliance.
3. Repeat above procedures until all frequency measured was complete.

4.2 Test SET-UP (Block Diagram of Configuration)



4.3 Measurement Equipment Used

EQUIPMENT TYPE	MFR	MODEL NUMBER	SERIAL NUMBER	Calibrated until
L.I.S.N	SCHWARZBECK	NSLK 8127	8127-669	2020-05-19
10 db attenuator	JFW	50FP-010-H4	4360846-427-1	2020-05-19
RF Cable	N/A	N/A	2#	2020-05-19
EMI Test Receiver	ROHDE&SCHWARZ	ESCI	101358	2020-05-19

4.4 Conducted Emission Limit

Conducted Emission Frequency(MHz)	Quasi-peak	Average
0.15-0.5	66-56	56-46
0.5-5.0	56	46
5.0-30.0	60	50

- Note:** 1. The lower limit shall apply at the transition frequencies
 2. The limit decreases in line with the logarithm of the frequency in the range of 0.15 to 0.50MHz.



4.5 Measurement Result

Operation Mode:	TX	Test Date :	Dec. 12, 2019
Frequency Range:	0.15MHz~30MHz	Temperature :	28°C
Test Result:	PASS	Humidity :	65 %
Test By:	Best		

Pass

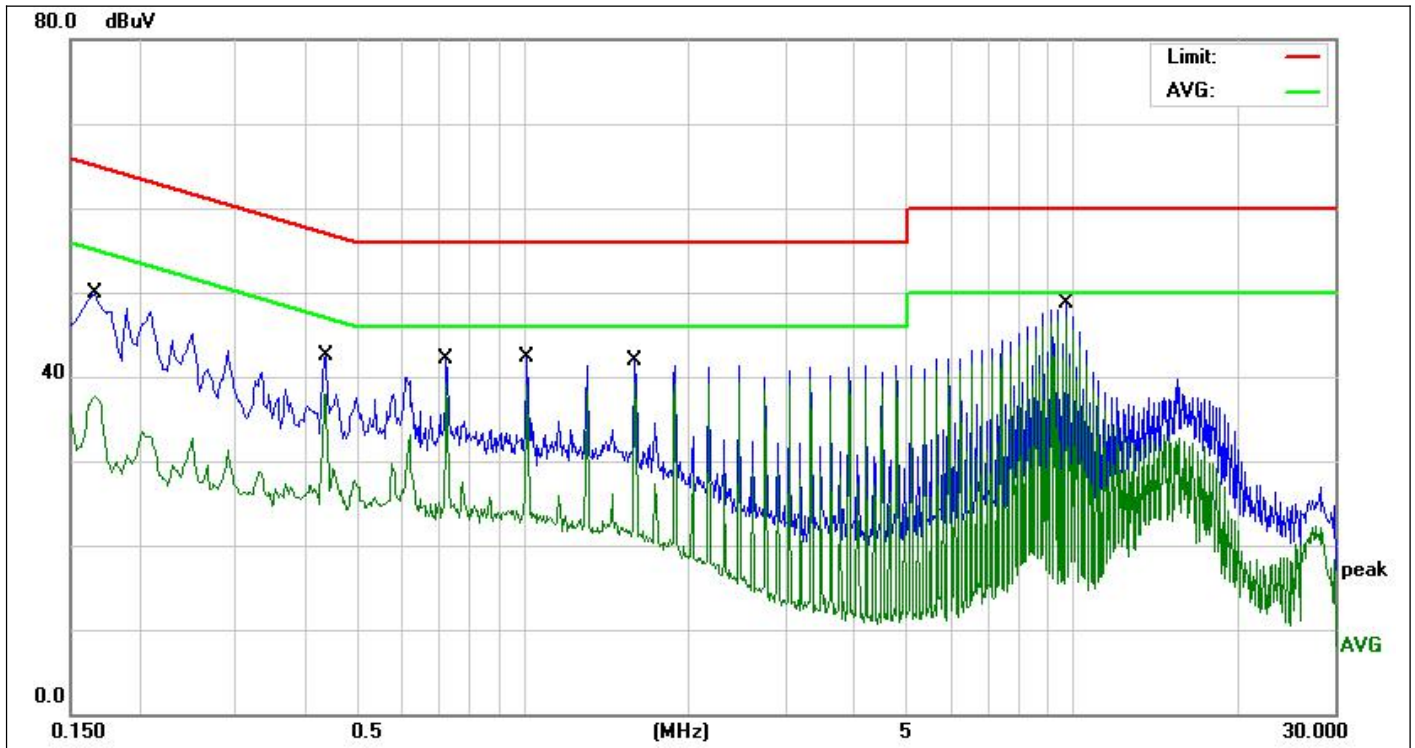
We pretested modes (Wireless Charging(10W),Wireless Charging(5W)) for EUT. The test data see follow the table.



Report No.: EA1912071F 01001

11 of 36

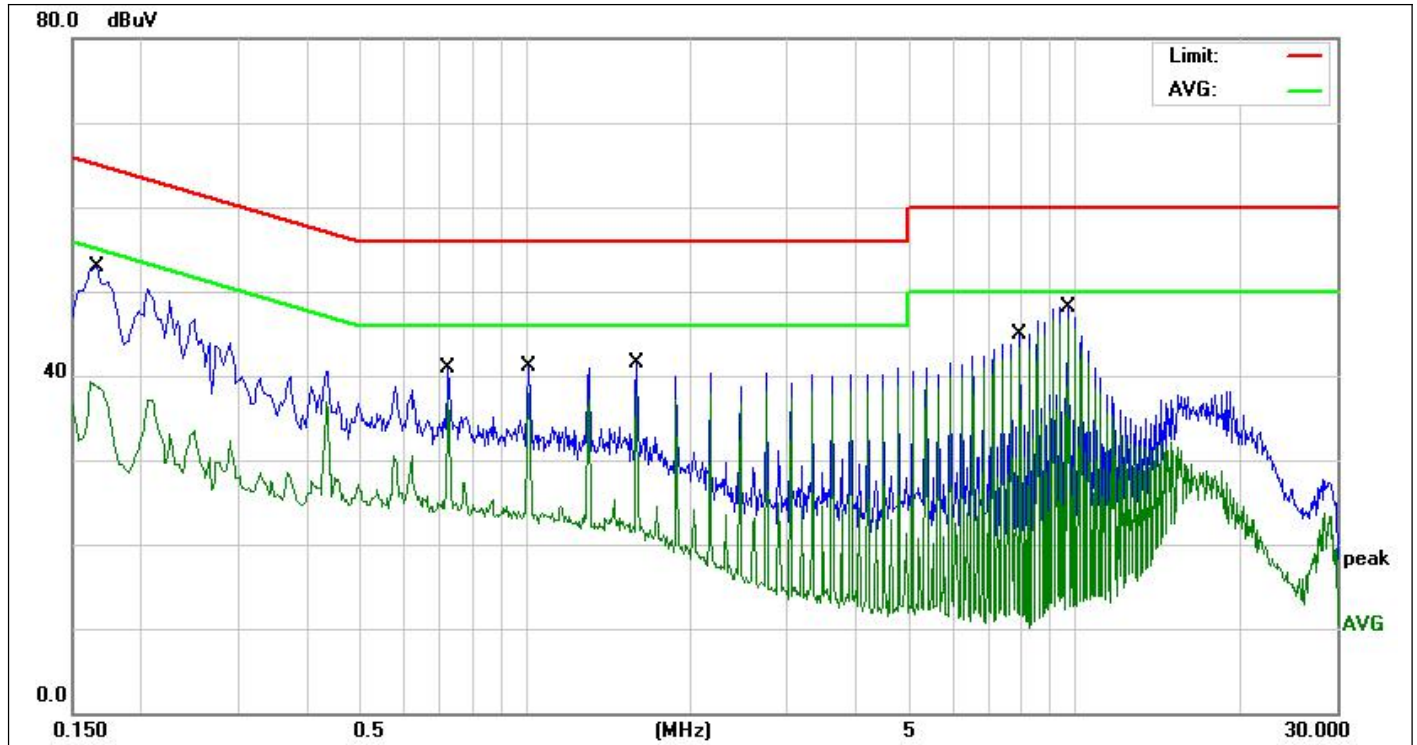
Test mode: Wireless Charging 5W use iphone



Site:	843	Phase:	N	Temperature(C):	26(C)
Limit:	FCC Part 15 C Conduction(QP)	Test Time:	2019/12/12	Humidity(%):	60%
EUT:	Wireless Charger	Power Rating:	AC 120V/60Hz	Test Engineer:	Jack
M/N.:	IHQI006	Test Engineer:	Jack		
Mode:	Wireless Charging 5W				
Note:					

No.	Frequency (MHz)	Reading Level(dBuV)	Factor (dB)	Measurement(dBuV)	Limit (dBuV)	Over (dB)	Detector	Comment
1	0.1660	38.06	9.74	47.80	65.15	-17.35	QP	
2	0.1660	27.01	9.74	36.75	55.15	-18.40	AVG	
3	0.4380	29.47	9.80	39.27	57.10	-17.83	QP	
4	0.4380	27.76	9.80	37.56	47.10	-9.54	AVG	
5	0.7260	30.77	9.83	40.60	56.00	-15.40	QP	
6	0.7260	29.43	9.83	39.26	46.00	-6.74	AVG	
7	1.0180	30.51	9.79	40.30	56.00	-15.70	QP	
8	1.0180	29.32	9.79	39.11	46.00	-6.89	AVG	
9	1.5980	30.52	9.84	40.36	56.00	-15.64	QP	
10	1.5980	29.60	9.84	39.44	46.00	-6.56	AVG	
11	9.7340	37.36	9.97	47.33	60.00	-12.67	QP	
12 *	9.7340	36.85	9.97	46.82	50.00	-3.18	AVG	

*:Maximum data x:Over limit !:over margin



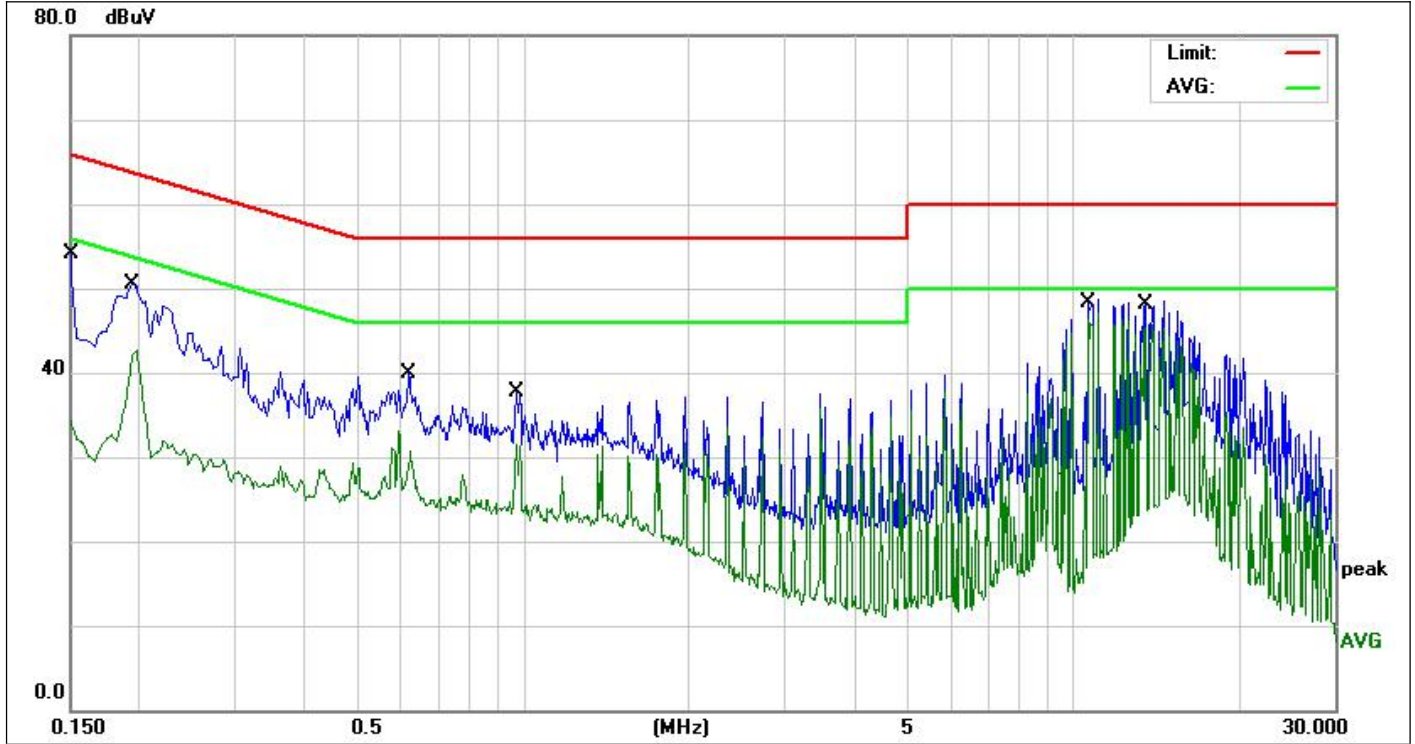
Site:	843	Phase:	L1	Temperature(C):	26(C)
Limit:	FCC Part 15 C Conduction(QP)	Humidity(%):	60%	Test Time:	2019/12/12
EUT:	Wireless Charger	Power Rating:	AC 120V/60Hz	Test Engineer:	Jack
M/N.:	IHQI006				
Mode:	Wireless Charging 5W				
Note:					

No.	Frequency (MHz)	Reading Level(dBuV)	Factor (dB)	Measurement(dBuV)	Limit (dBuV)	Over (dB)	Detector	Comment
1	0.1660	40.78	9.74	50.52	65.15	-14.63	QP	
2	0.1660	28.94	9.74	38.68	55.15	-16.47	AVG	
3	0.7260	29.32	9.83	39.15	56.00	-16.85	QP	
4	0.7260	27.75	9.83	37.58	46.00	-8.42	AVG	
5	1.0180	29.37	9.79	39.16	56.00	-16.84	QP	
6	1.0180	27.95	9.79	37.74	46.00	-8.26	AVG	
7	1.5940	29.36	9.84	39.20	56.00	-16.80	QP	
8	1.5940	28.16	9.84	38.00	46.00	-8.00	AVG	
9	7.9700	33.29	9.91	43.20	60.00	-16.80	QP	
10	7.9700	32.89	9.91	42.80	50.00	-7.20	AVG	
11	9.7100	35.63	9.97	45.60	60.00	-14.40	QP	
12 *	9.7100	36.75	9.97	46.72	50.00	-3.28	AVG	

*:Maximum data x:Over limit !:over margin



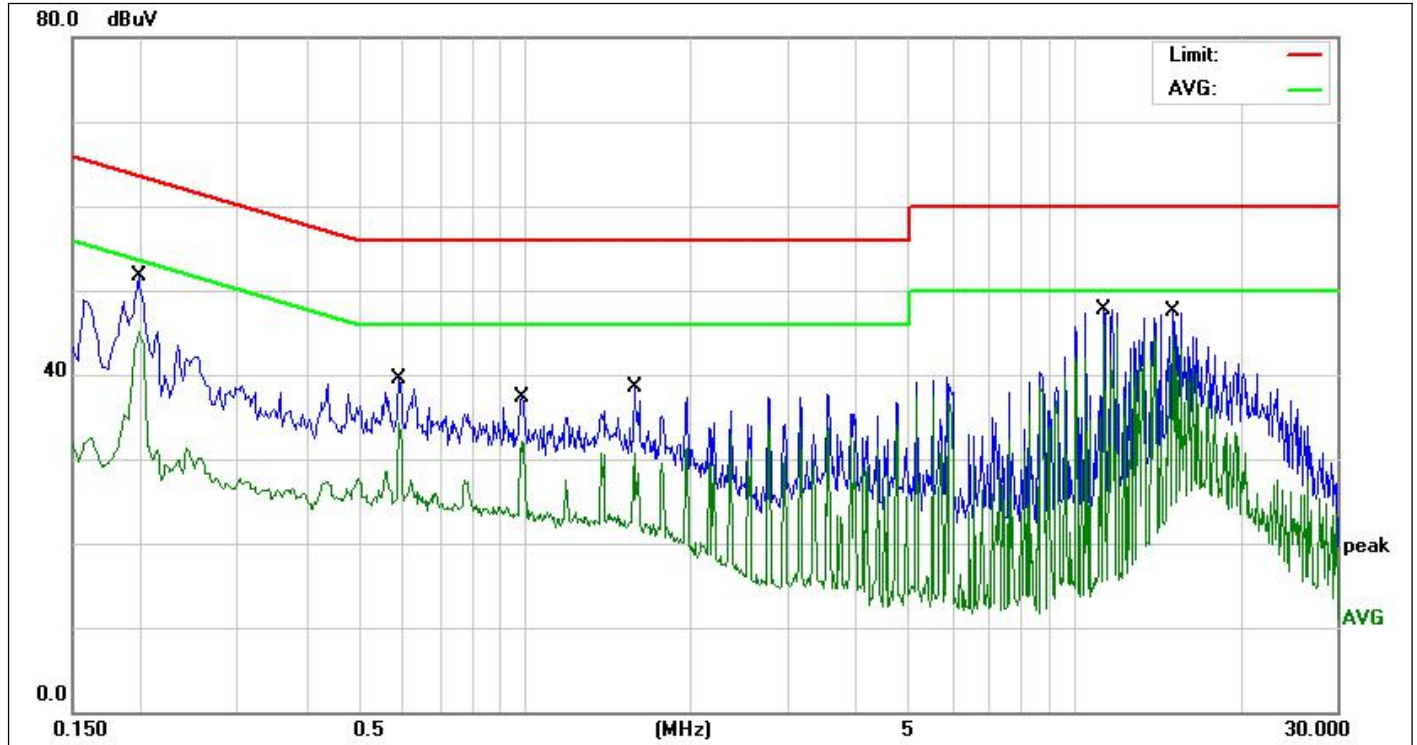
Test mode: Wireless Charging 10W use Samsung S9



Site:	843	Phase:	N	Temperature(C):	26(C)
Limit:	FCC Part 15 C Conduction(QP)	Test Time:	2019/12/12	Humidity(%):	60%
EUT:	Wireless Charger	Power Rating:	AC 120V/60Hz	Test Engineer:	Jack
M/N.:	IHQI006	Note:			
Mode:	Wireless Charging 10W				

No.	Frequency (MHz)	Reading Level(dBuV)	Factor (dB)	Measurement(dBuV)	Limit (dBuV)	Over (dB)	Detector	Comment
1	0.1500	38.62	9.72	48.34	65.99	-17.65	QP	
2	0.1500	23.27	9.72	32.99	55.99	-23.00	AVG	
3	0.1940	36.78	9.79	46.57	63.86	-17.29	QP	
4	0.1940	31.42	9.79	41.21	53.86	-12.65	AVG	
5	0.6180	24.95	9.81	34.76	56.00	-21.24	QP	
6	0.6180	19.13	9.81	28.94	46.00	-17.06	AVG	
7	0.9740	18.94	9.79	28.73	56.00	-27.27	QP	
8	0.9740	13.68	9.79	23.47	46.00	-22.53	AVG	
9	10.6620	35.81	9.99	45.80	60.00	-14.20	QP	
10	10.6620	36.21	9.99	46.20	50.00	-3.80	AVG	
11	13.5940	35.56	10.05	45.61	60.00	-14.39	QP	
12 *	13.5940	36.16	10.05	46.21	50.00	-3.79	AVG	

*:Maximum data x:Over limit !:over margin

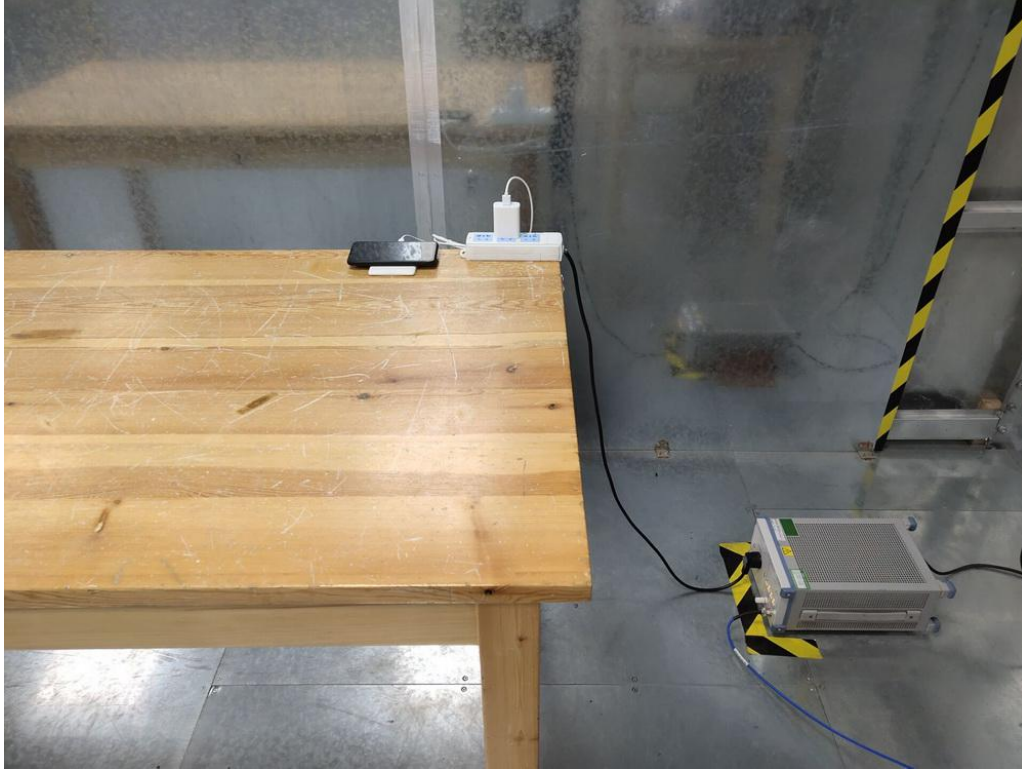


Site:	843	Phase:	L1	Temperature(C):	26(C)
Limit:	FCC Part 15 C Conduction(QP)			Humidity(%):	60%
EUT:	Wireless Charger	Test Time:		2019/12/12	
M/N.:	IHQI006	Power Rating:		AC 120V/60Hz	
Mode:	Wireless Charging 10W	Test Engineer:		Jack	
Note:					

No.	Frequency (MHz)	Reading Level(dBuV)	Factor (dB)	Measurement(dBuV)	Limit (dBuV)	Over (dB)	Detector	Comment
1	0.1980	37.77	9.79	47.56	63.69	-16.13	QP	
2	0.1980	35.39	9.79	45.18	53.69	-8.51	AVG	
3	0.5899	24.46	9.80	34.26	56.00	-21.74	QP	
4	0.5899	20.93	9.80	30.73	46.00	-15.27	AVG	
5	0.9860	22.31	9.79	32.10	56.00	-23.90	QP	
6	0.9860	18.14	9.79	27.93	46.00	-18.07	AVG	
7	1.5820	21.99	9.84	31.83	56.00	-24.17	QP	
8	1.5820	17.28	9.84	27.12	46.00	-18.88	AVG	
9	11.2700	34.74	10.01	44.75	60.00	-15.25	QP	
10 *	11.2700	35.85	10.01	45.86	50.00	-4.14	AVG	
11	15.0740	35.64	10.08	45.72	60.00	-14.28	QP	
12	15.0740	34.71	10.08	44.79	50.00	-5.21	AVG	

*:Maximum data x:Over limit !:over margin

4.6 Conducted Measurement Photo



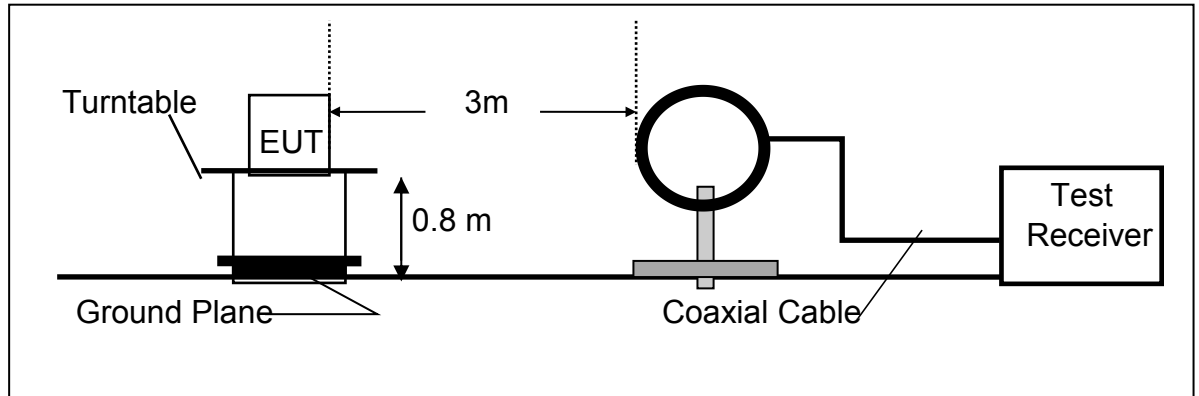
5 Radiated Emission Test

5.1 Measurement Procedure

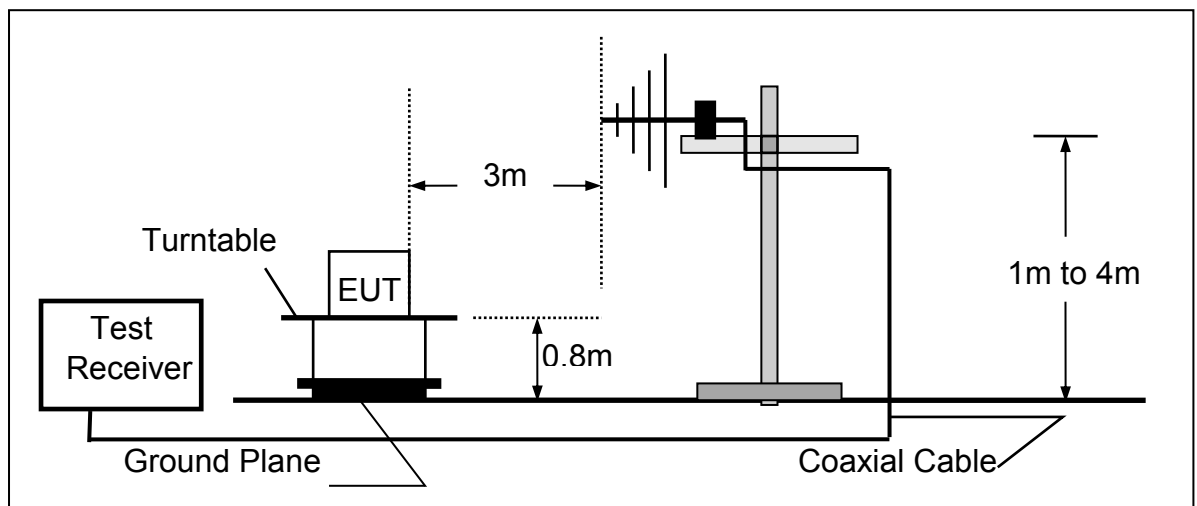
1. The EUT was placed on a turn table which is 0.8m above ground plane.
2. Maximum procedure was performed on the six highest emissions to ensure EUT compliance.
3. And also, each emission was to be maximized by changing the polarization of receiving antenna both horizontal and vertical.
4. Repeat above procedures until all frequency measured were complete.

5.2 Test SET-UP (Block Diagram of Configuration)

(A) Radiated Emission Test Set-Up, Frequency Below 30MHz



(B) Radiated Emission Test Set-Up, Frequency Below 1000MHz





5.3 Measurement Equipment Used

Item	Equipment	Manufacturer	Model No.	Serial No.	Calibrated until
1.	EMI Test Receiver	Rohde & Schwarz	ESPI	100502	2020-11-28
2.	Pre-Amplifier	HP	8447D	2727A06172	2020-05-19
3.	Bilog Antenna	Schwarzbeck	VULB9163	VULB9163-588	2020-05-19
4.	Loop Antenna	Schwarzbeck	FMZB 1516	1516-141	2020-01-04
5.	RF Cable	Gigalink Microwave	ZT40-2.92J-2.92 J-2m	N/A	2020-03-12
6.	RF Cable	Gigalink Microwave	ZT40-2.92J-2.92 J-0.3m	N/A	2020-03-12
7.	RF Cable	N/A	N/A	6#	2020-05-19
8.	3m Semi-anechoic Chamber	chengyu	9m*6m*6m	N/A	2020-05-19
9.	Test Software	Farad	EZ-EMC Ver:ANCI-3A1	N/A	N/A

5.4 Radiated Emission Limit

The emissions from an intentional radiator shall not exceed the field strength levels specified in the following table 15.209(a):

FCC Part 15.209				
Frequency (MHz)	Field Strength Limitation		Field Strength Limitation Frequency tion at 3m Measurement Dist	
	(uV/m)	Dist	(uV/m)	(dBuV/m)
0.009 – 0.490	2400 / F(KHz)	300m	10000 * 2400/F(KHz)	20log 2400/F(KHz) + 80
0.490 – 1.705	24000 / F(KHz)	30m	100 * 24000/F(KHz)	20log 24000/F(KHz) + 40
1.705 – 30.00	30	30m	100* 30	20log 30 + 40
30.0 – 88.0	100	3m	100	20log 100
88.0 – 216.0	150	3m	150	20log 150
216.0 – 960.0	200	3m	200	20log 200
Above 960.0	500	3m	500	20log 500



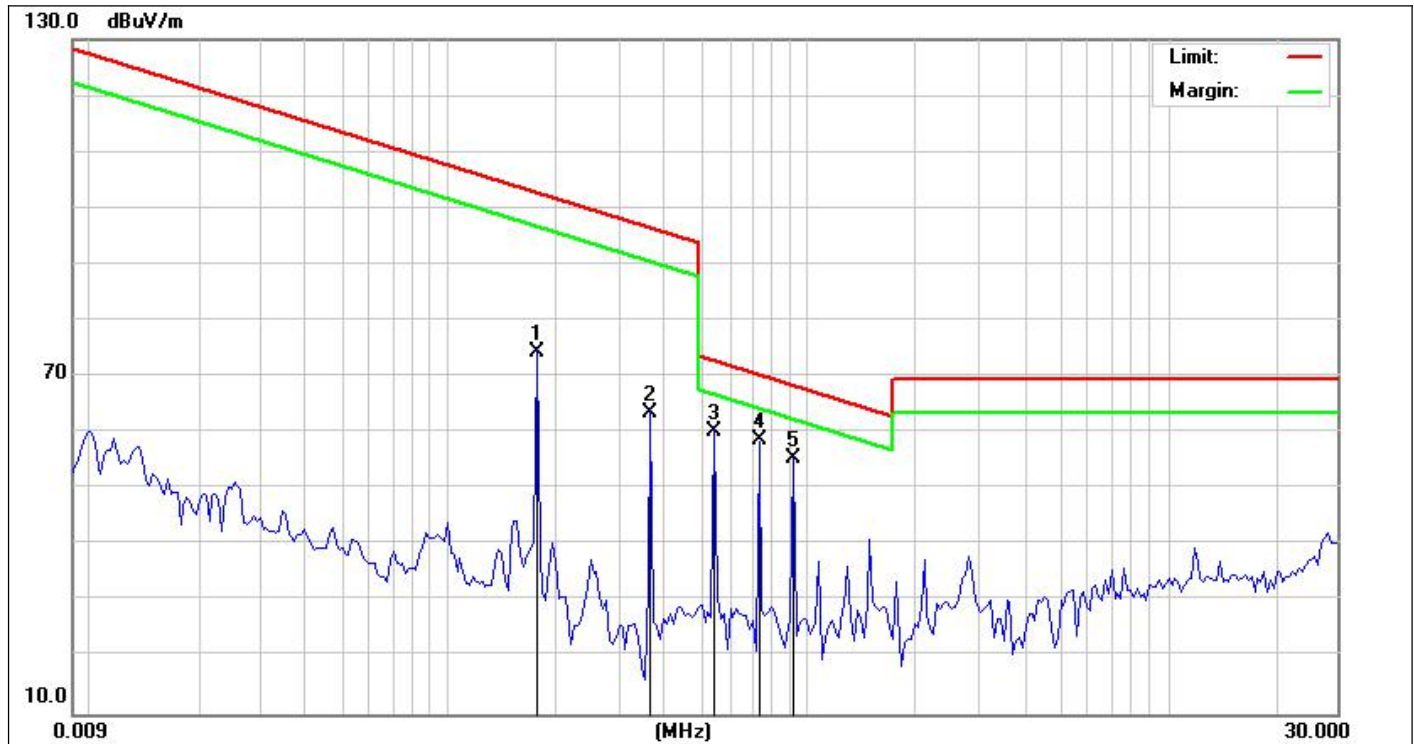
15.205 Restricted bands of operation

MHz	MHz	MHz	GHz
0.090 - 0.110	16.42 - 16.423	399.9 - 410	4.5 - 5.15
¹ 0.495 - 0.505	16.69475 - 16.69525	608 - 614	5.35 - 5.46
2.1735 - 2.1905	16.80425 - 16.80475	960 - 1240	7.25 - 7.75
4.125 - 4.128	25.5 - 25.67	1300 - 1427	8.025 - 8.5
4.17725 - 4.17775	37.5 - 38.25	1435 - 1626.5	9.0 - 9.2
4.20725 - 4.20775	73 - 74.6	1645.5 - 1646.5	9.3 - 9.5
6.215 - 6.218	74.8 - 75.2	1660 - 1710	10.6 - 12.7
6.26775 - 6.26825	108 - 121.94	1718.8 - 1722.2	13.25 - 13.4
6.31175 - 6.31225	123 - 138	2200 - 2300	14.47 - 14.5
8.291 - 8.294	149.9 - 150.05	2310 - 2390	15.35 - 16.2
8.362 - 8.366	156.52475 - 156.52525	2483.5 - 2500	17.7 - 21.4
8.37625 - 8.38675	156.7 - 156.9	2690 - 2900	22.01 - 23.12
8.41425 - 8.41475	162.0125 - 167.17	3260 - 3267	23.6 - 24.0
12.29 - 12.293	167.72 - 173.2	3332 - 3339	31.2 - 31.8
12.51975 - 12.52025	240 - 285	3345.8 - 3358	36.43 - 36.5
12.57675 - 12.57725	322 - 335.4	3600 - 4400	(²)

- Remark:
1. Emission level in dBuV/m=20 log (uV/m)
 2. Measurement was performed at an antenna to the closed point of EUT distance of meters.
 3. Only spurious frequency is permitted to locate within the Restricted Bands specified in provision of ξ 15.205, and the emissions located in restricted bands also comply with 15.209 limit.

5.5 Measurement Result

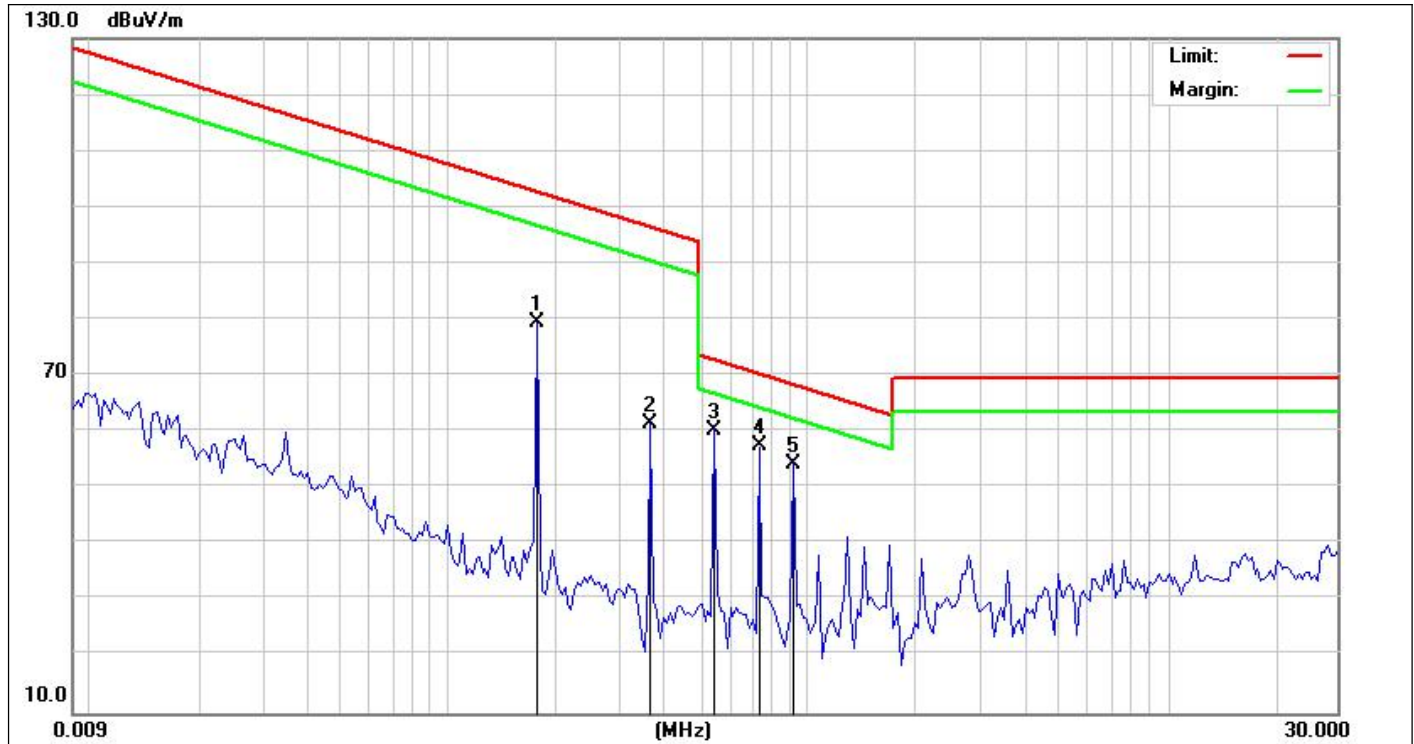
We pretested modes (Wireless Charging(10W),Wireless Charging(5W)) for EUT.
The worst mode (Wireless Charging(10W))test data see follow the table.



Site:	LAB	Antenna::	Vertical	Temperature(C):	23.4(C)
Limit:	FCC Part 15 Class B 3m Radiation(QP)	Test Time:	2019/12/31	Humidity(%):	56.7%
EUT:	Wireless Charging Pad	Power Rating:	AC 120V/60Hz	Test Engineer:	sunshine
M/N.:	IHQI006				
Mode:	Wireless Charging 10W				
Note:					

No.	Frequency (MHz)	Reading (dBuV)	Factor (dB/m)	Level (dBuV/m)	Limit (dBuV/m)	Margin (dB)	Det.	Height (cm)	Azimuth (deg)	Remark
1	0.1800	83.12	-8.77	74.35	102.44	-28.09	peak			
2	0.3602	72.20	-8.68	63.52	96.45	-32.93	peak			
3	0.5421	68.51	-8.16	60.35	72.92	-12.57	peak			
4 *	0.7213	66.17	-7.55	58.62	70.45	-11.83	peak			
5	0.9035	62.77	-7.36	55.41	68.50	-13.09	peak			
6	0.1800	83.12	-8.77	74.35	102.44	-28.09	peak			

*:Maximum data x:Over limit !:over margin



Site:	LAB	Antenna::	Horizontal	Temperature(C):	23.4(C)
Limit:	FCC Part 15 Class B 3m Radiation(QP)			Humidity(%):	56.7%
EUT:	Wireless Charging Pad	Test Time:			2019/12/31
M/N.:	IHQI006	Power Rating:			AC 120V/60Hz
Mode:	Wireless Charging 5W	Test Engineer:			sunshine
Note:					

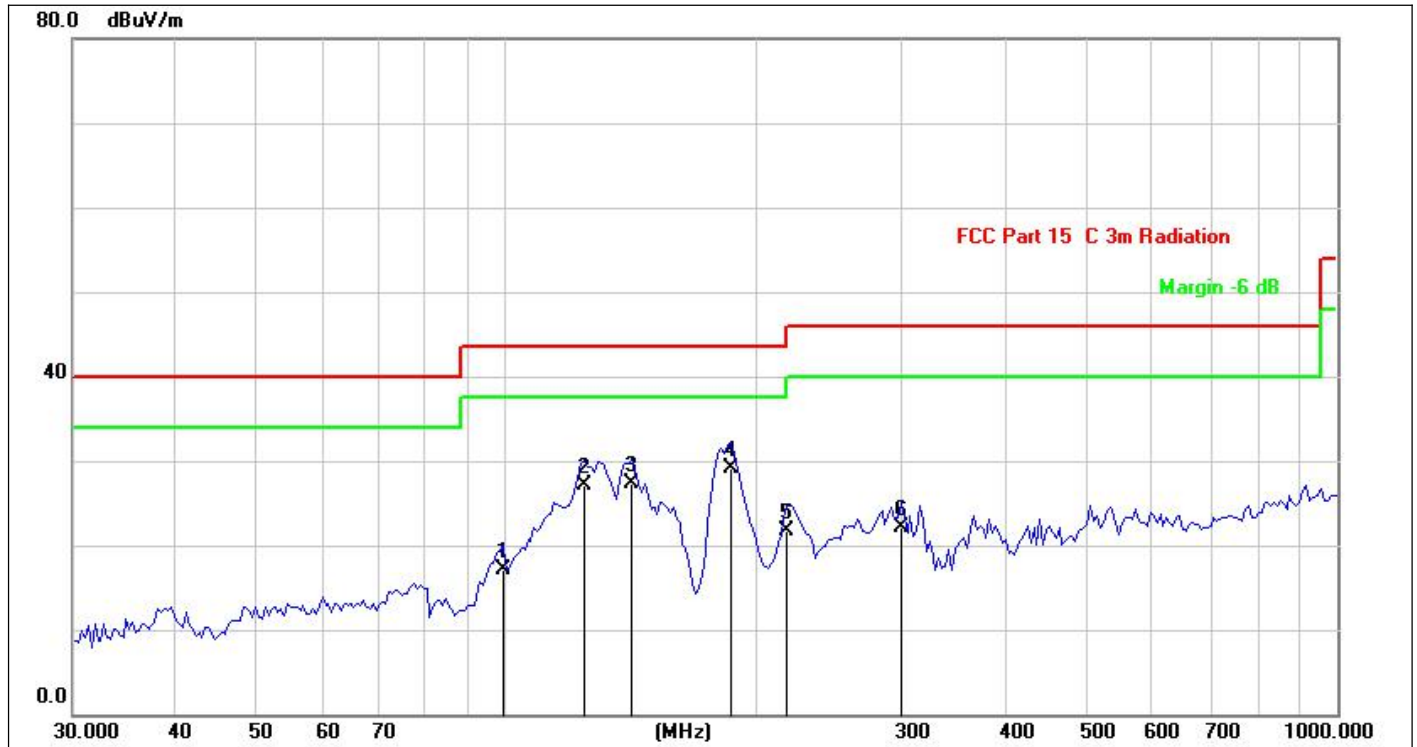
No.	Frequency (MHz)	Reading (dBuV)	Factor (dB/m)	Level (dBuV/m)	Limit (dBuV/m)	Margin (dB)	Det.	Height (cm)	Azimuth (deg)	Remark
1	0.1800	88.13	-8.77	79.36	102.44	-23.08	peak			
2	0.3602	70.24	-8.68	61.56	96.45	-34.89	peak			
3 *	0.5421	68.48	-8.16	60.32	72.92	-12.60	peak			
4	0.7213	65.07	-7.55	57.52	70.45	-12.93	peak			
5	0.9035	61.72	-7.36	54.36	68.50	-14.14	peak			
1	0.1800	88.13	-8.77	79.36	102.44	-23.08	peak			

- Note:**
- (1) All Readings are Peak Value.
 - (2) Emission Level= Reading Level+Probe Factor +Cable Loss.
 - (3) The average measurement was not performed when the peak measured data under the limit of average detection.
 - (4) EUT lying on the table position is the worst case result in the report.



We pretested modes (Wireless Charging(10W),Wireless Charging(5W)) for EUT. The test data see follow the table.

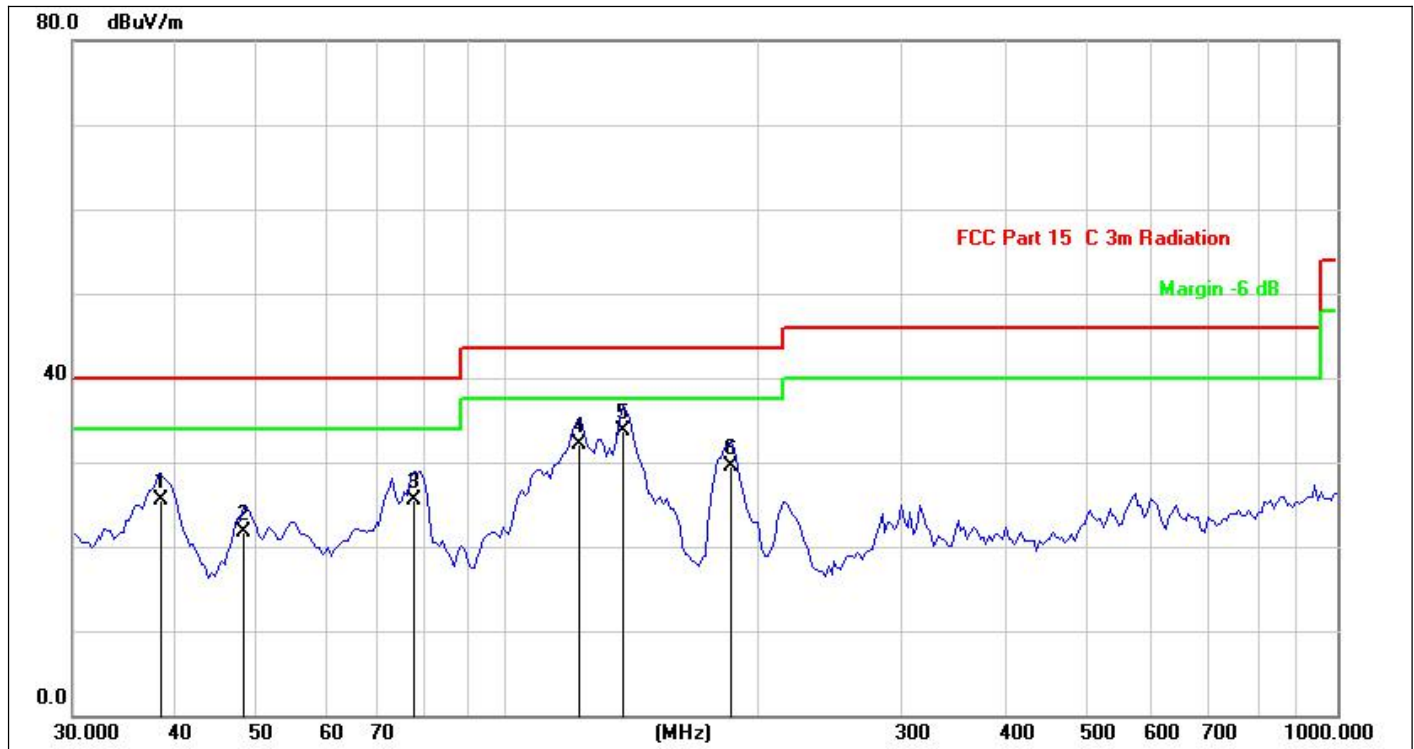
Test mode: Wireless Charging 5W use iphone



Site:	LAB	Antenna::	Horizontal	Temperature(C):	23.4(C)
Limit:	FCC Part 15 Class B 3m Radiation(QP)	Test Time:		Humidity(%):	56.7%
EUT:	Wireless Charging Pad	Power Rating:		Test Engineer:	sunshine
M/N.:	IHQI006				
Mode:	Wireless Charging 5W				
Note:					

No.	Frequency (MHz)	Reading (dBuV)	Factor (dB/m)	Level (dBuV/m)	Limit (dBuV/m)	Margin (dB)	Det.	Height (cm)	Azimuth (deg)	Remark
1	98.8326	35.24	-18.23	17.01	43.50	-26.49	QP			
2	124.1330	45.62	-18.51	27.11	43.50	-16.39	QP			
3	141.5777	47.15	-19.94	27.21	43.50	-16.29	QP			
4 *	185.7882	47.14	-18.03	29.11	43.50	-14.39	QP			
5	217.5443	38.08	-16.30	21.78	46.00	-24.22	QP			
6	298.2681	35.72	-13.64	22.08	46.00	-23.92	QP			

*:Maximum data x:Over limit !:over margin



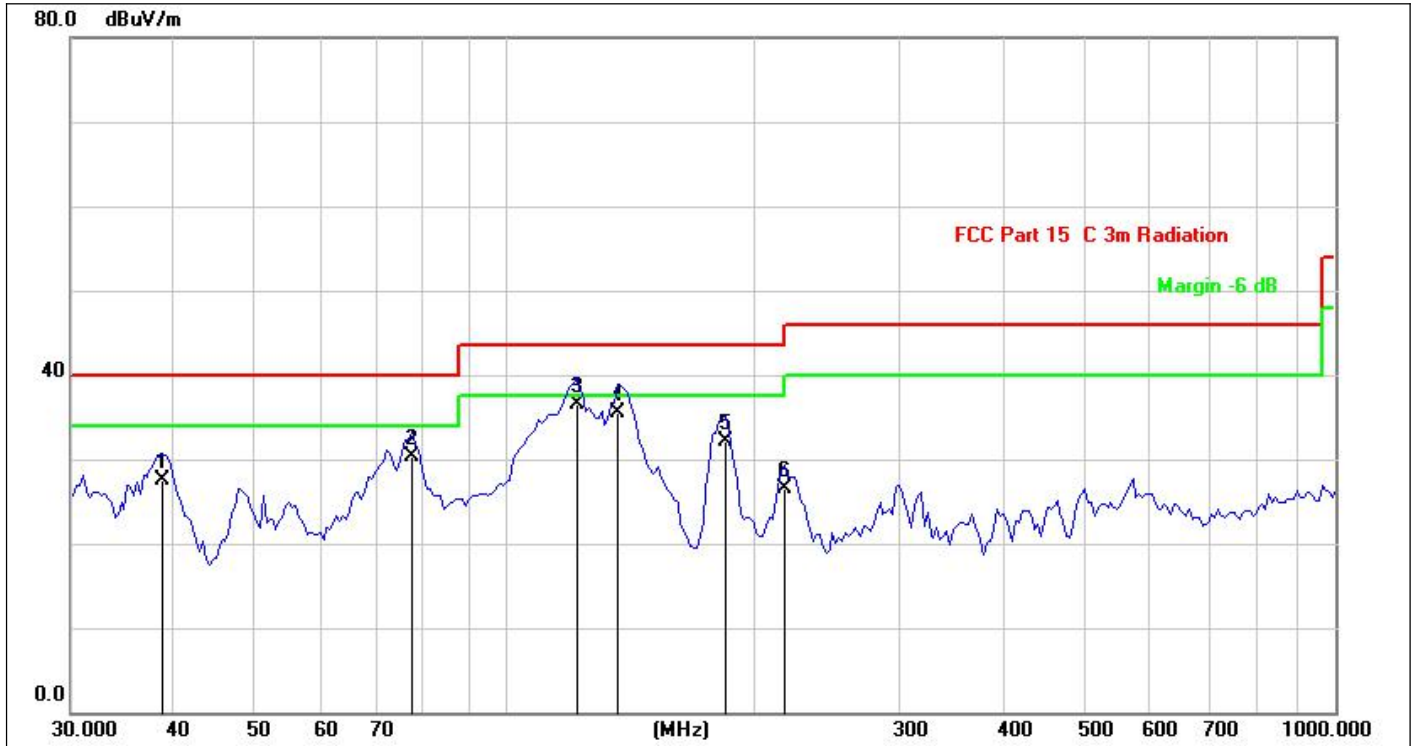
Site:	LAB	Antenna::	Vertical	Temperature(C):	23.4(C)
Limit:	FCC Part 15 Class B 3m Radiation(QP)			Humidity(%):	56.7%
EUT:	Wireless Charging Pad	Test Time:		2019/12/31	
M/N.:	IHQI006	Power Rating:		AC 120V/60Hz	
Mode:	Wireless Charging 5W	Test Engineer:		sunshine	
Note:					

No.	Frequency (MHz)	Reading (dBuV)	Factor (dB/m)	Level (dBuV/m)	Limit (dBuV/m)	Margin (dB)	Det.	Height (cm)	Azimuth (deg)	Remark
1	38.3462	42.74	-17.17	25.57	40.00	-14.43	QP			
2	48.1626	38.11	-16.37	21.74	40.00	-18.26	QP			
3	77.3212	43.96	-18.47	25.49	40.00	-14.51	QP			
4	121.9755	50.47	-18.27	32.20	43.50	-11.30	QP			
5 *	137.9028	53.47	-19.80	33.67	43.50	-9.83	QP			
6	185.7882	47.49	-18.03	29.46	43.50	-14.04	QP			

*:Maximum data x:Over limit !:over margin



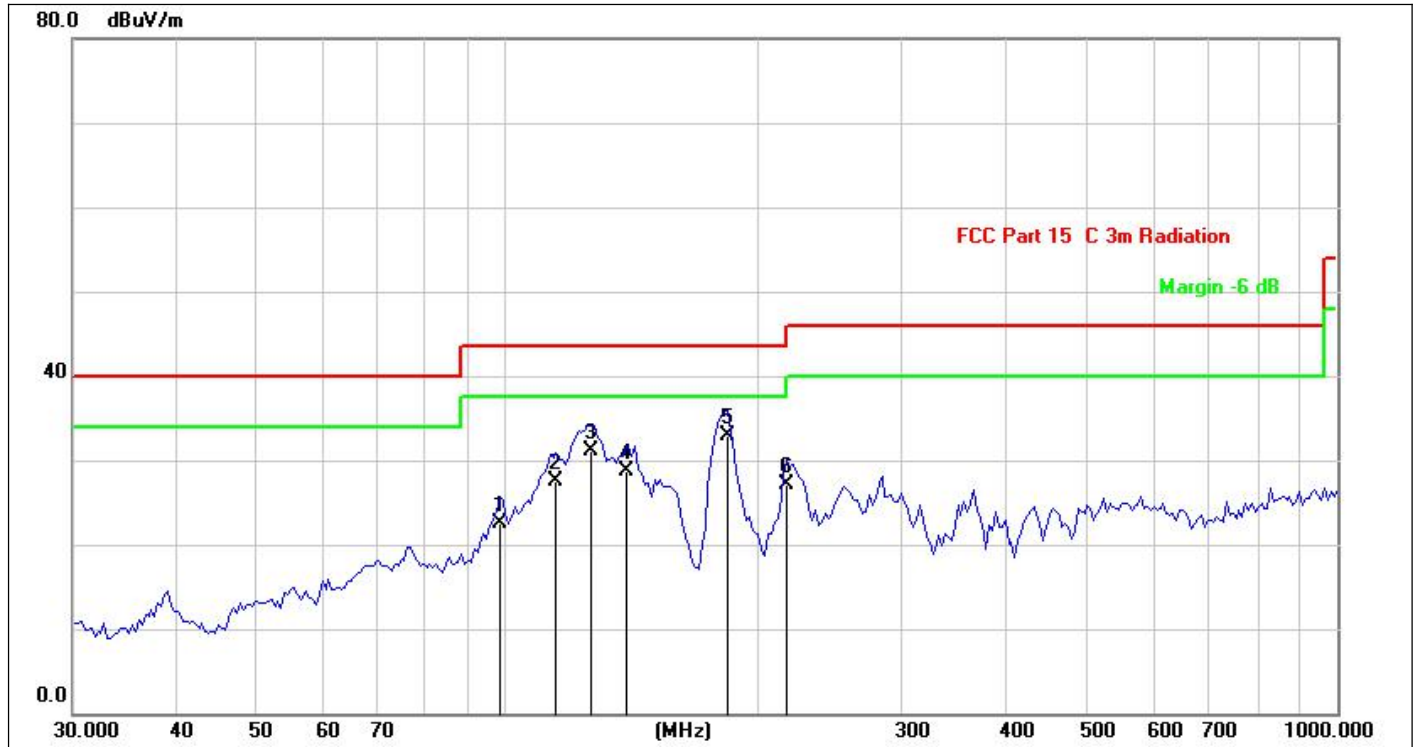
Test mode: Wireless Charging 10W use Samsung S9



Site:	LAB	Antenna::	Vertical	Temperature(C):	23.4(C)
Limit:	FCC Part 15 Class B 3m Radiation(QP)			Humidity(%):	56.7%
EUT:	Wireless Charging Pad	Test Time:	2019/12/31		
M/N.:	IHQI006	Power Rating:	AC 120V/60Hz		
Mode:	Wireless Charging 10W	Test Engineer:	sunshine		
Note:					

No.	Frequency (MHz)	Reading (dBuV)	Factor (dB/m)	Level (dBuV/m)	Limit (dBuV/m)	Margin (dB)	Det.	Height (cm)	Azimuth (deg)	Remark
1	38.6839	44.62	-17.12	27.50	40.00	-12.50	QP			
2	77.3212	48.74	-18.47	30.27	40.00	-9.73	QP			
3 *	121.9755	54.75	-18.27	36.48	43.50	-7.02	QP			
4	136.6993	55.30	-19.71	35.59	43.50	-7.91	QP			
5	184.1667	50.28	-18.12	32.16	43.50	-11.34	QP			
6	217.5443	42.79	-16.30	26.49	46.00	-19.51	QP			

*:Maximum data x:Over limit !:over margin

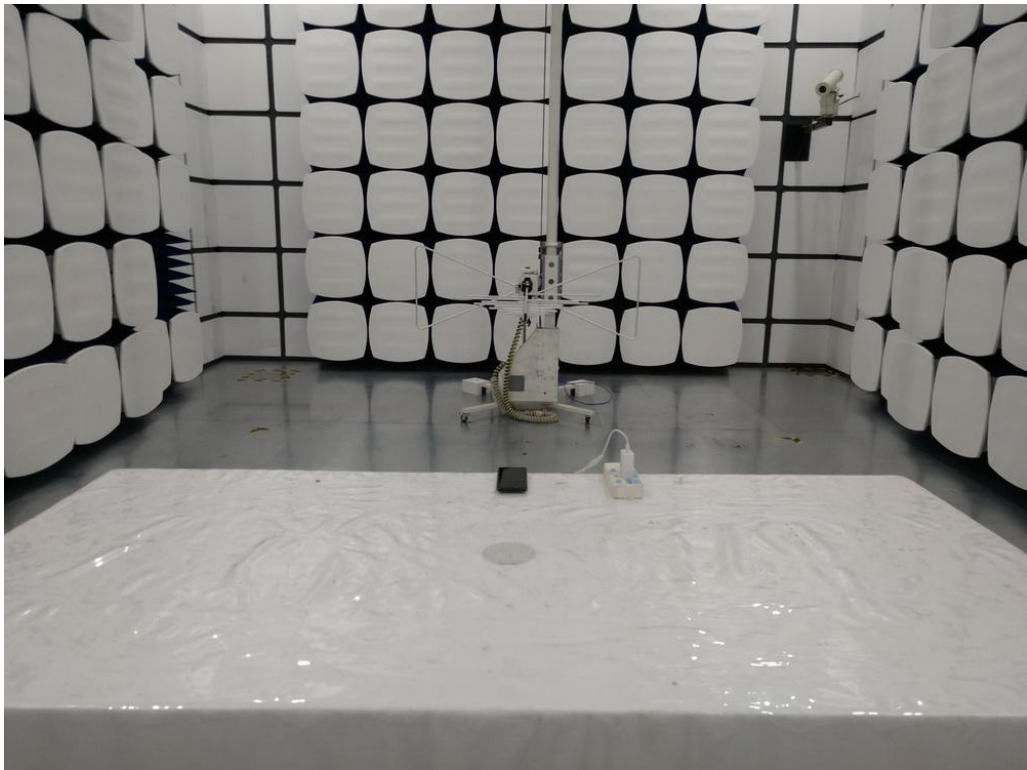
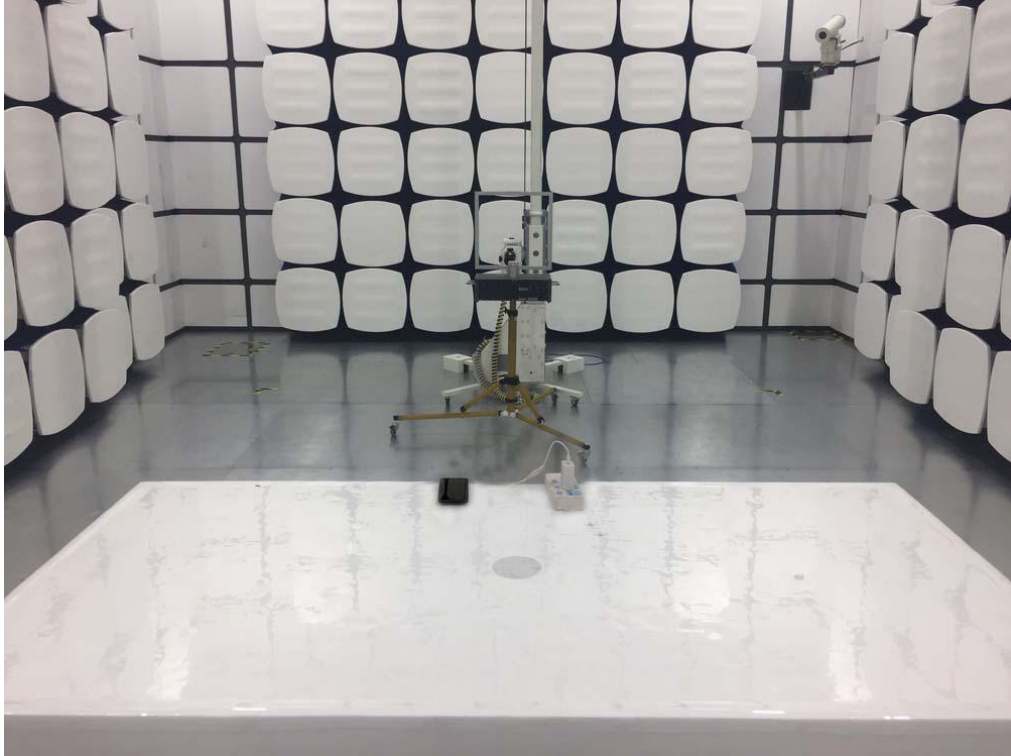


Site:	LAB	Antenna::	Horizontal	Temperature(C):	23.4(C)
Limit:	FCC Part 15 Class B 3m Radiation(QP)			Humidity(%):	56.7%
EUT:	Wireless Charging Pad	Test Time:	2019/12/31		
M/N.:	IHQI006	Power Rating:	AC 120V/60Hz		
Mode:	Wireless Charging 10W	Test Engineer:	sunshine		
Note:					

No.	Frequency (MHz)	Reading (dBuV)	Factor (dB/m)	Level (dBuV/m)	Limit (dBuV/m)	Margin (dB)	Det.	Height (cm)	Azimuth (deg)	Remark
1	97.9699	40.92	-18.34	22.58	43.50	-20.92	QP			
2	114.7156	45.15	-17.66	27.49	43.50	-16.01	QP			
3	126.3286	49.92	-18.75	31.17	43.50	-12.33	QP			
4	139.1172	48.60	-19.91	28.69	43.50	-14.81	QP			
5 *	184.1667	50.94	-18.12	32.82	43.50	-10.68	QP			
6	217.5443	43.41	-16.30	27.11	46.00	-18.89	QP			

*:Maximum data x:Over limit !:over margin

5.6 Radiated Measurement Photos



6 20db Bandwidth

6.1 20dB Bandwidth Limit

None: for reporting purposed only.

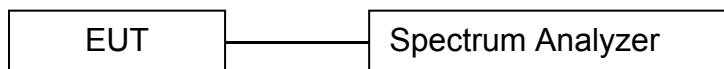
6.2 Test Instruments

Refer a test equipment and calibration data table in this test report.

6.3 Test Procedure

The bandwidth of the fundamental frequency was measured by spectrum analyzer with 100Hz RBW and 300Hz VBW. The 20dB bandwidth is defined as the total spectrum the power of which is higher than peak power minus 20dB.

6.4 Test Setup

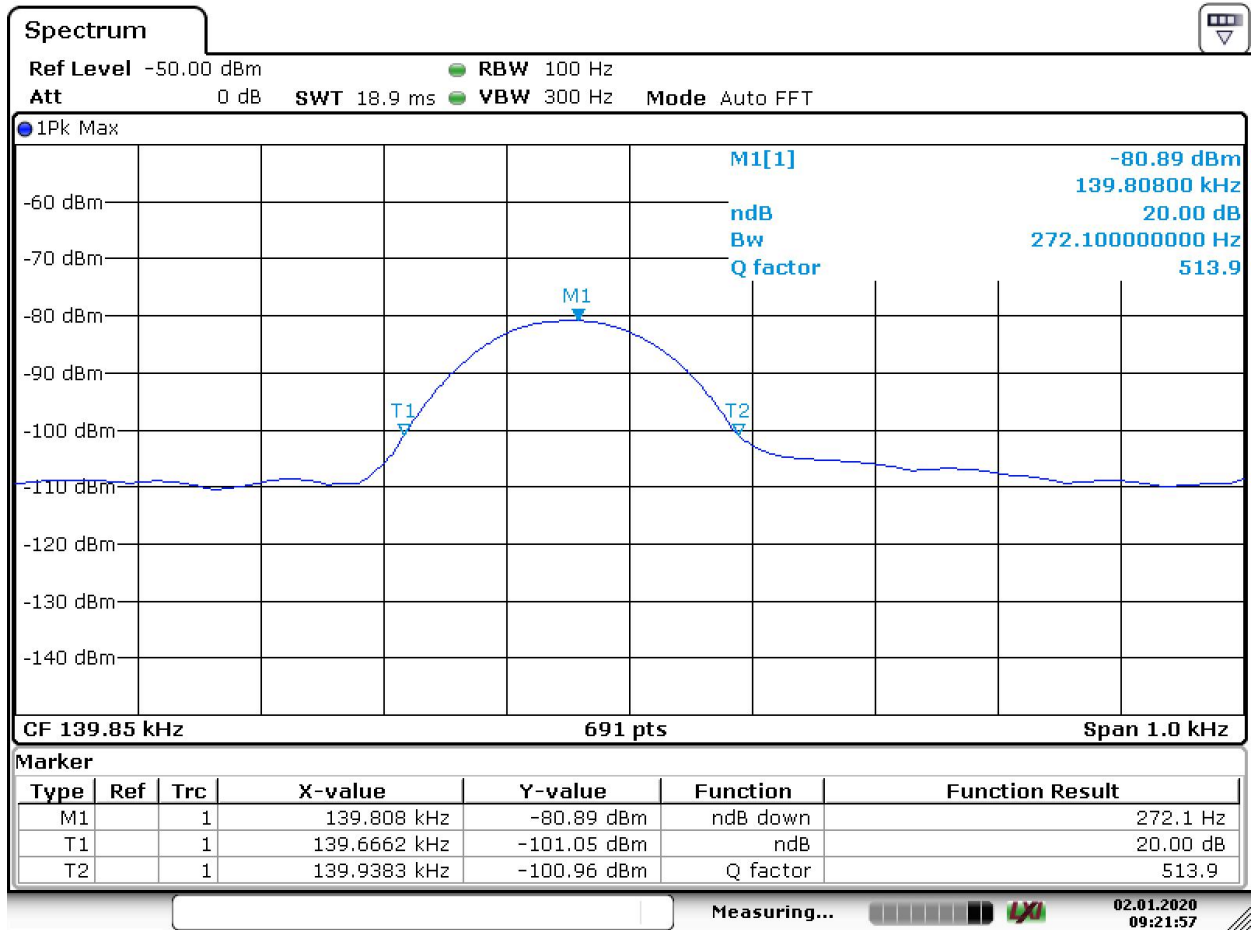


6.5 Test Result

Frequency (KHz)	20dB Bandwidth (Hz)	Results
139.85	272.1	PASS



20 dB Bandwidth Test plot



Date: 2.JAN.2020 09:21:56

7 Antenna Application

7.1 Antenna requirement

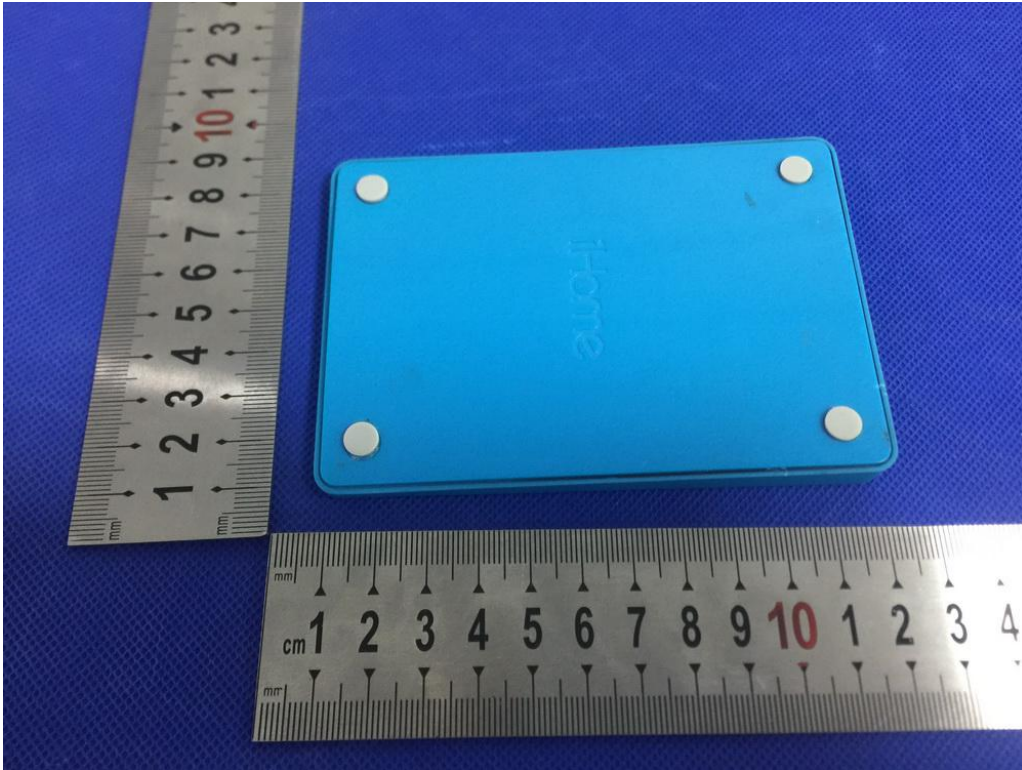
For intentional device, according to FCC 47 CFR Section 15.203, an intentional radiator shall be designed to ensure that no antenna other than that furnished by the responsible party shall be used with the device.

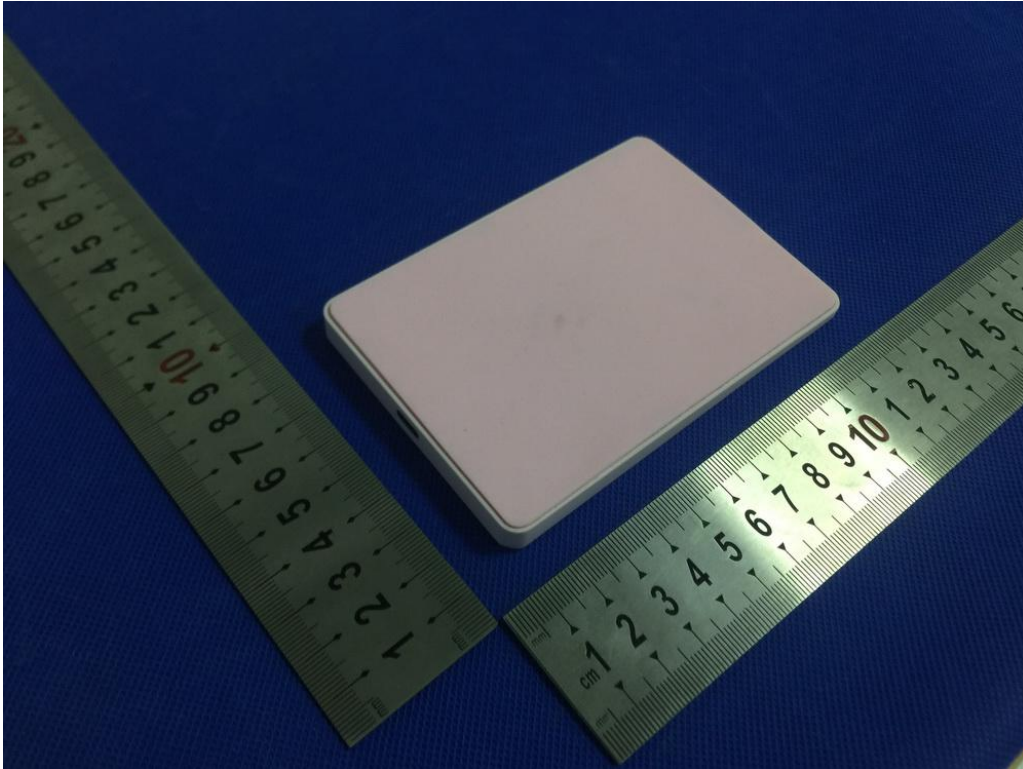
7.2 Result

The EUT's antenna, permanent attached antenna, used an Induction coil and integrated on PCB, The antenna's gain meets the requirement.

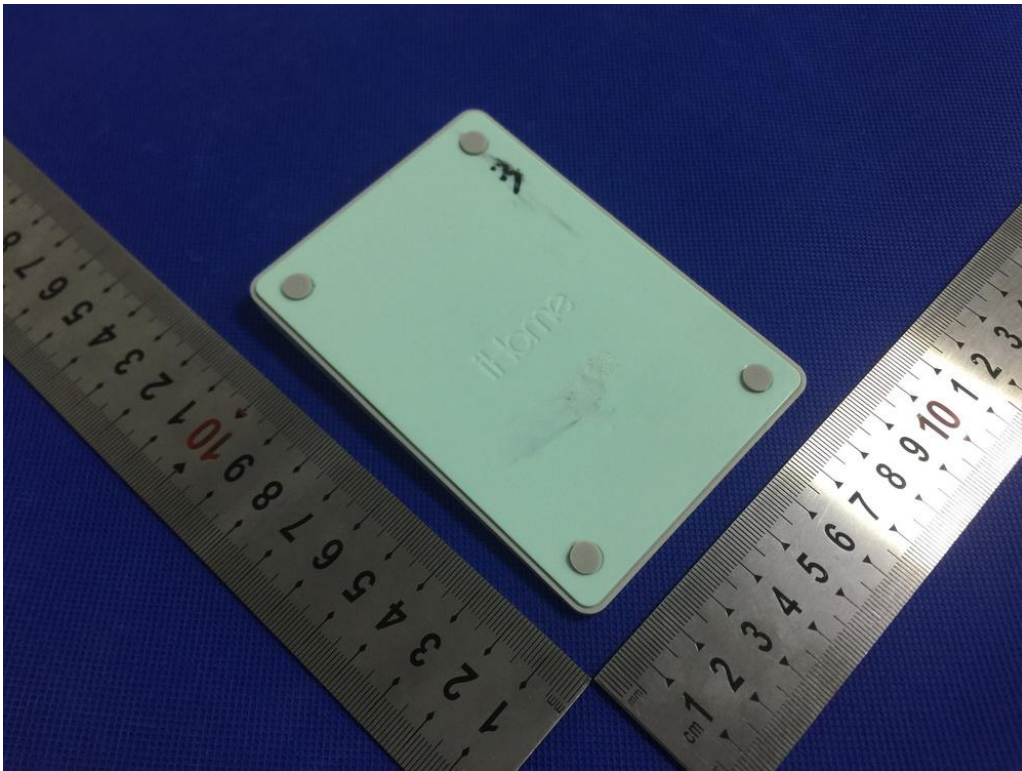
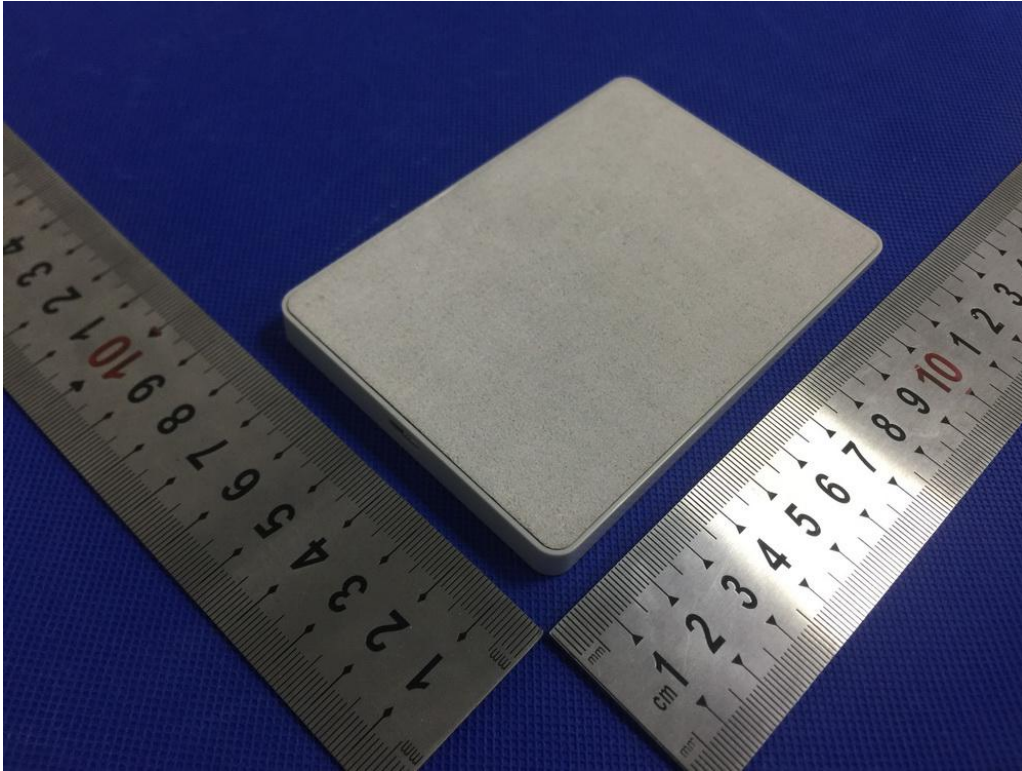


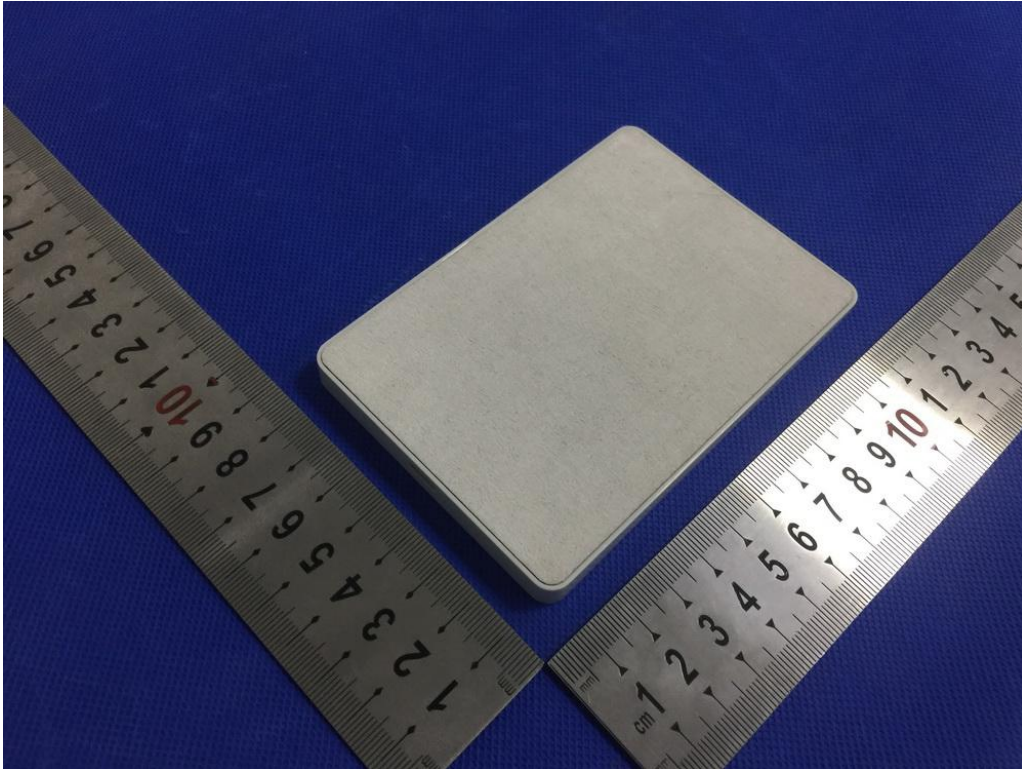
APPENDIX (Photos of EUT)

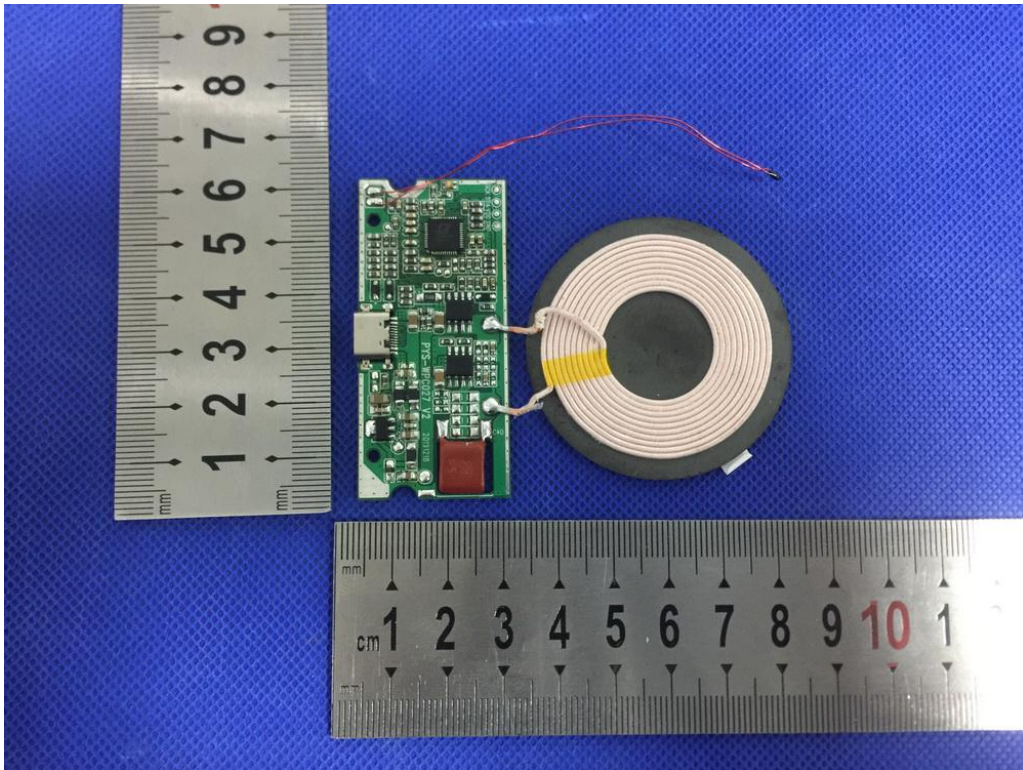
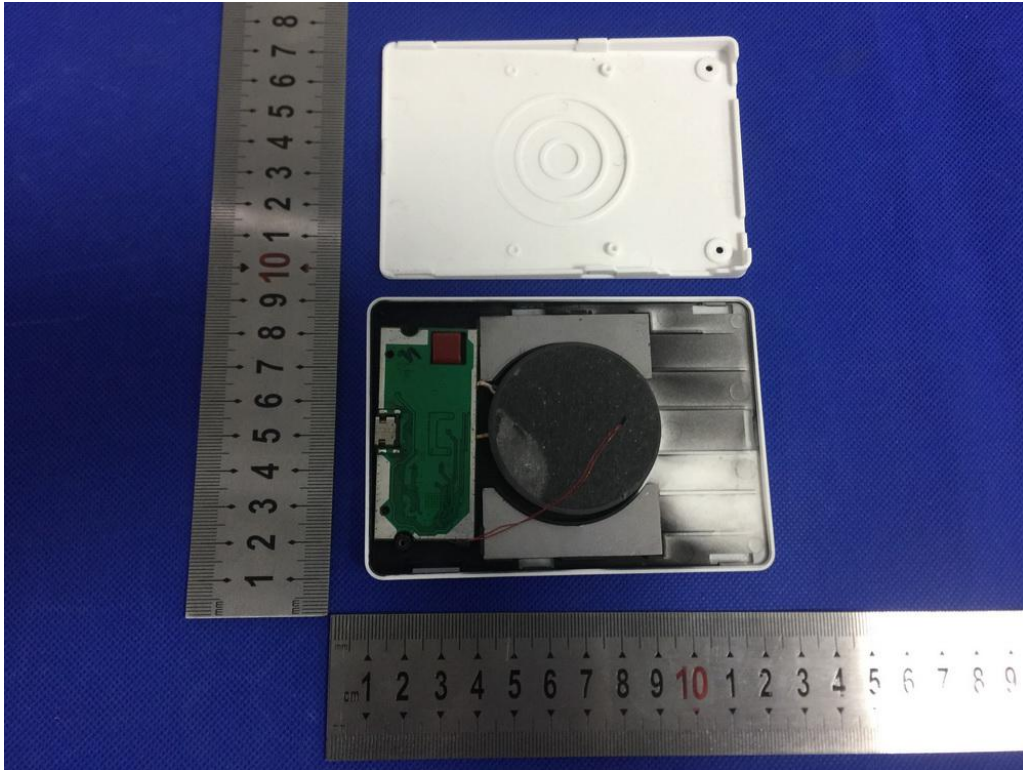


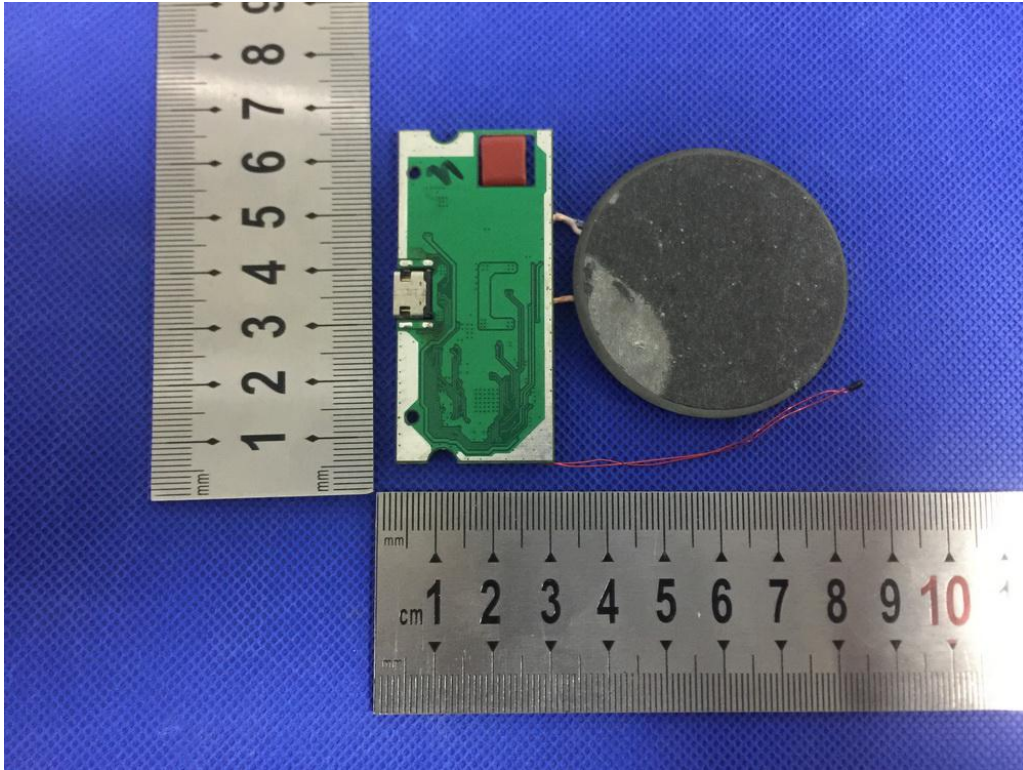












-----The end of report-----