

# WiFi Adapter (without Driver)

## User Guide ( For Windows )

### Easy Setup:

Plug & Play automatically

### Step 1

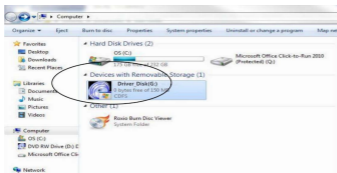
Connect the USB interface of the WiFi adapter to computer USB port

(Support USB2.0/3.0)



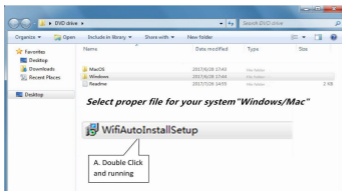
### Step 2

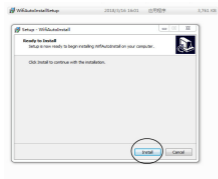
The computer control panel opens the AutoPlay function or check "Driver\_Disk" to install the driver software



## Step 3

Select proper file for your system "Windows/Mac"





Choose your network and enter the password

# WiFi Adapter (ohne Fahrer)

**Benutzerhandbuch** (Für Windows)

## Einfache Einstellung:

Stecker & Automatisch spielen

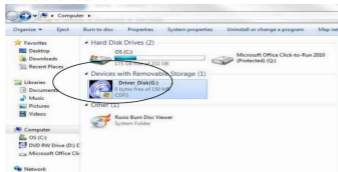
### Schritt 1

Verbinden Sie die USB Schnittstelle des WiFi Adapter mit dem USB Anschluss des Computers (Unterstützung USB2.0 / 3.0)



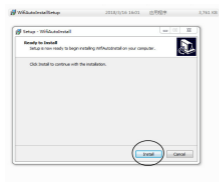
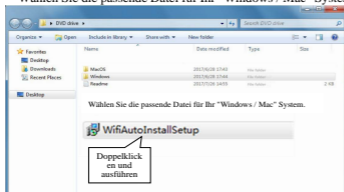
### Schritt 2

Das Computer-Kontrollfeld öffnet die Autoplay-Funktion oder überprüft "Driver\_Disk", um die Treibersoftware zu installieren



### Schritt 3

Wählen Sie die passende Datei für Ihr "Windows / Mac" System.



Wählen Sie Ihr Netzwerk und Ihr Passwort eingeben.

# WiFi Adaptateur (sans chauffeur)

Guide de l'utilisateur (Pour Windows)

## Installation facile:

Fiche & Jouer automatiquement

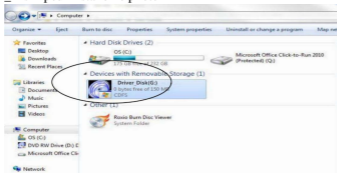
### Étape 1

Connectez l'interface USB de WiFi adaptateur au port USB de l'ordinateur (Support USB2.0 / 3.0)



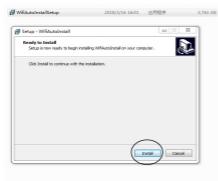
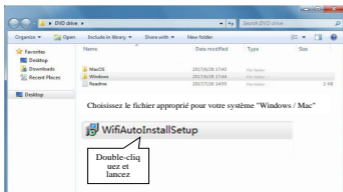
### Étape 2

Le panneau de commande de l'ordinateur ouvre la fonction de lecture automatique ou vérifie "Driver\_Disk" pour installer le pilote



### Étape 3

Choisissez le fichier approprié pour votre système "Windows / Mac"



Choisissez votre réseau et entrez votre mot de passe

# WiFi アダプタ (ドライバなし)

ユーザーガイド (Windows の場合)

## 簡単セットアップ: 自動的にプラグ & 起動

### ステップ1

WiFi アダプタの USB インターフェイスをコンピュータの USB ポートに接続します。

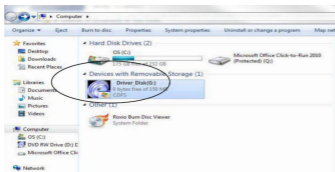
(サポート USB2.0 / 3.0)



### ステップ2

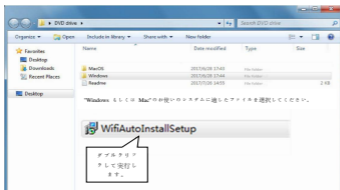
コンピュータのコントロールパネルが自動再生機能を開くか、または「ドライバディスク」をチェックしてドライバソフトウェアをインストールします。

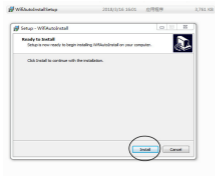




## ステップ3

"Windows もしくは Mac"のお使いのシステムに適したファイルを選択してください。





ネットワークを選択してパスワードを入力してください。

# WiFi Adaptador (Sin conductor)

Guía del usuario (Para Windows)

## Configuración fácil:

Enchufe & Jugar automáticamente

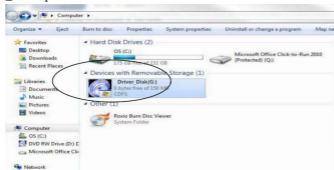
### Paso 1

Conecte la interfaz USB del WiFi adaptador al puerto USB de la computadora  
(Compatible con USB2.0 / 3.0)



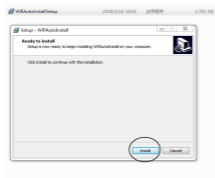
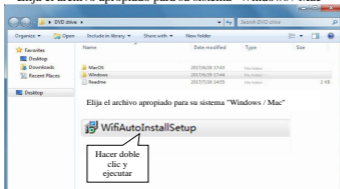
### Paso 2

El panel de control de computadora abre la función de reproducción automática o marca "Driver\_Disk" para instalar el software del controlador



### Paso 3

Elija el archivo apropiado para su sistema "Windows / Mac"



Elija su red e ingrese su contraseña

# WiFi Adattatore (Nessun Driver)

**Guida utente** (Per Windows)

## Facile installazione:

Spina & Gioca automaticamente

### Passo 1

Collegare l'interfaccia USB del WiFi adattatore alla porta USB del computer (Supporto USB 2.0 / 3.0)



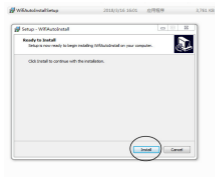
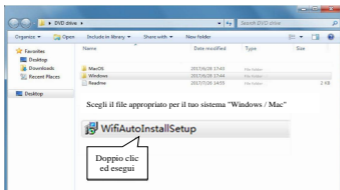
### Passo 2

Il pannello di controllo del computer apre la funzione di autoplay o controlla "Driver\_Disk" per installare il software del driver



### Passo 3

Scegli il file appropriato per il tuo sistema "Windows / Mac"



Scegli la tua rete e inserisci la tua password

NOTE: This equipment has been tested and found to comply with the limits for a Class B digital device, pursuant to part 15 of the FCC Rules. These limits are designed to provide reasonable protection against harmful interference in a residential installation. This equipment generates uses and can radiate radio frequency energy and, if not installed and used in accordance with the instructions, may cause harmful interference to radio communications. However, there is no guarantee that interference will not occur in a particular installation. If this equipment does cause harmful interference to radio or television reception, which can be determined by turning the equipment off and on, the user is encouraged to try to correct the interference by one or more of the following measures:

- Reorient or relocate the receiving antenna.
- Increase the separation between the equipment and receiver.
- Connect the equipment into an outlet on a circuit different from that to which the receiver is connected.
- Consult the dealer or an experienced radio/TV technician for help

Changes or modifications not expressly approved by the party responsible for compliance could void the user's authority to operate the equipment.

This device complies with Part 15 of the FCC Rules. Operation is subject to the following two conditions:

(1) this device may not cause harmful interference, and (2) this device must accept any interference received, including interference that may cause undesired operation.