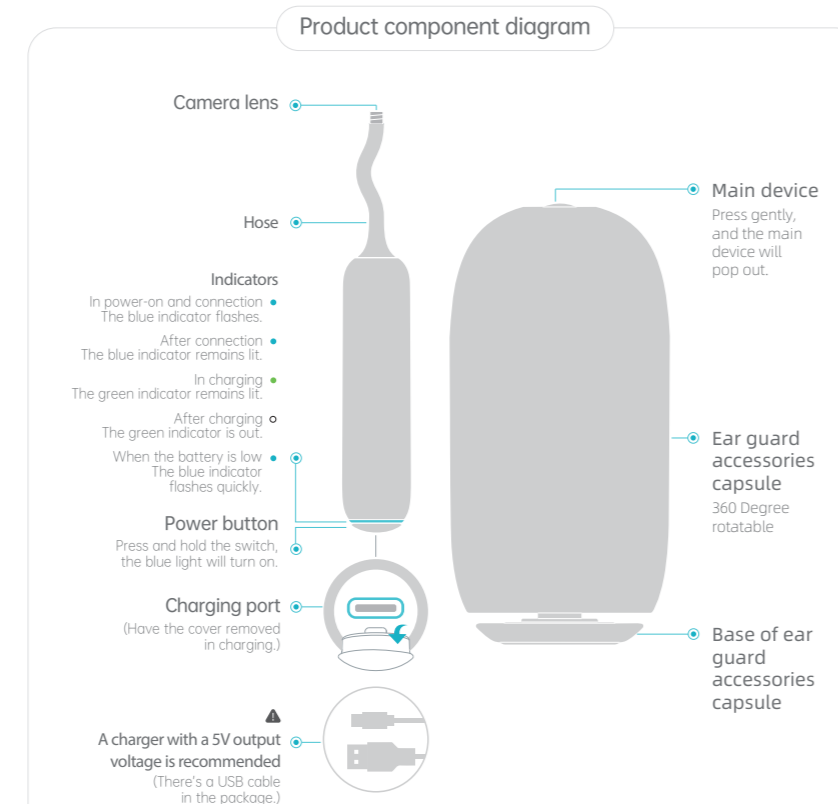


正面

bebird Home 30S Family Edition
 Smart Ear Cleaning Device



Download the app



Search for "bebird" in App Store and install it.

Search for "bebird" in Google Play and install it.

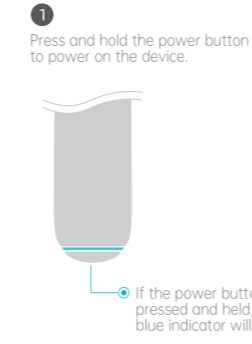


Or Scan QR code to download the bebird app and install it.

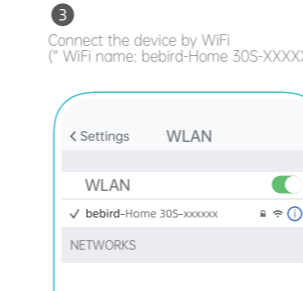


For more instructional videos, please scan the QR code.

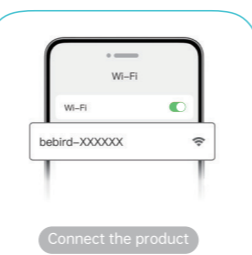
App connection



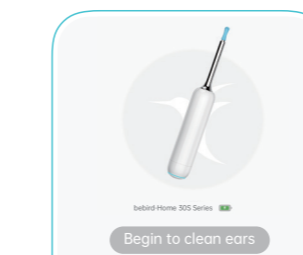
Press and hold the power button to power on the device.



Connect the device by WiFi ("WiFi name: bebird-Home 30S-XXXXXX").



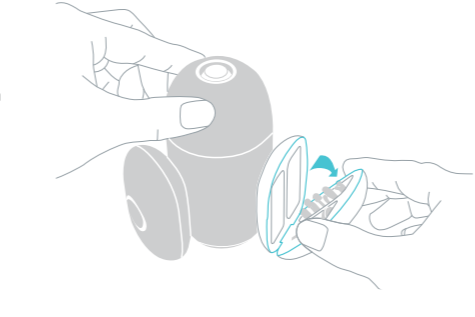
Open bebird App, and click "Connect the product".



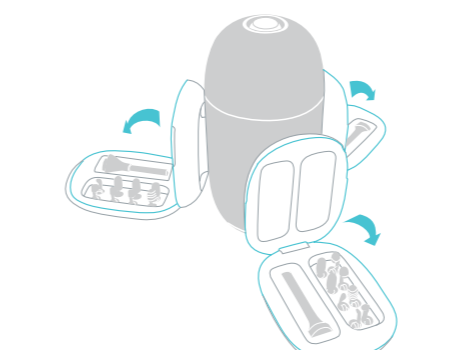
Back to the App and click "Begin to clean ears" to operate the product.

The method for taking accessories

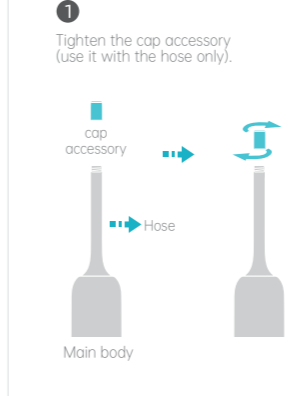
1 Attach the children's accessory case, couple's accessory case, and elder's accessory case to the ear guard accessories capsule, then with one hand holding the ear guard accessories capsule, and the other hand open the accessory cases.



2 Open the accessory cases as shown in the figure.



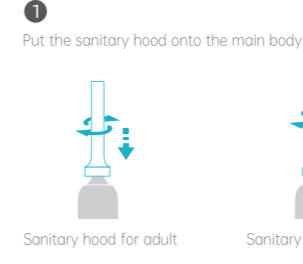
Installation and use of cap for ear checking



1 Tighten the cap accessory (use it with the nose only).

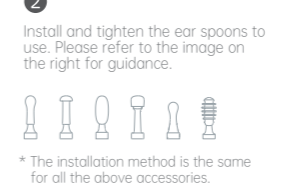
2 Insert it into the acoustic meatus slowly and check.

Installation of sanitary hood and ear spoons



1 Put the sanitary hood onto the main body and tighten it.

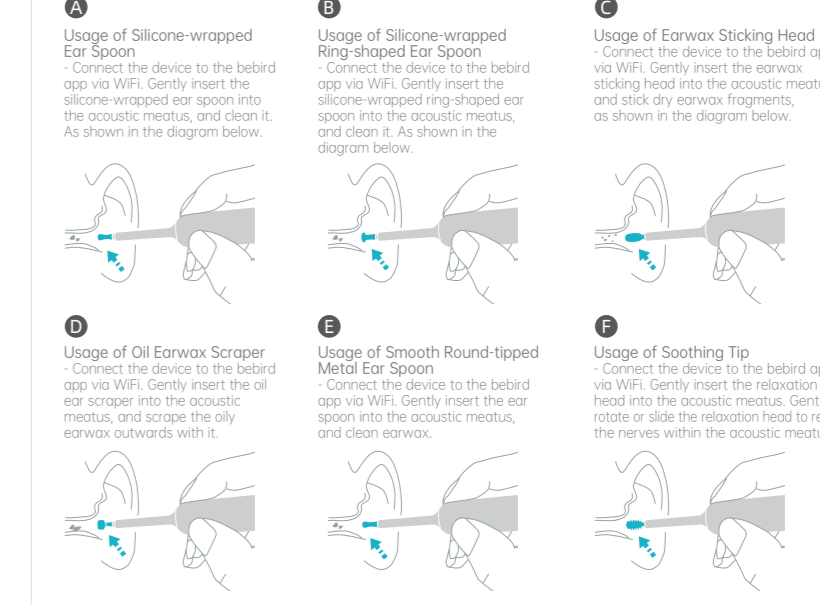
Sanitary hood for adult Sanitary hood for child



2 Install and tighten the ear spoons to use. Please refer to the image on the right for guidance.

Warm Reminder
Please inspect the ear spoon for any damage before use. If it is damaged, promptly replace it with a new one. Ensure that it is securely assembled before use to prevent the ear spoon from falling out.

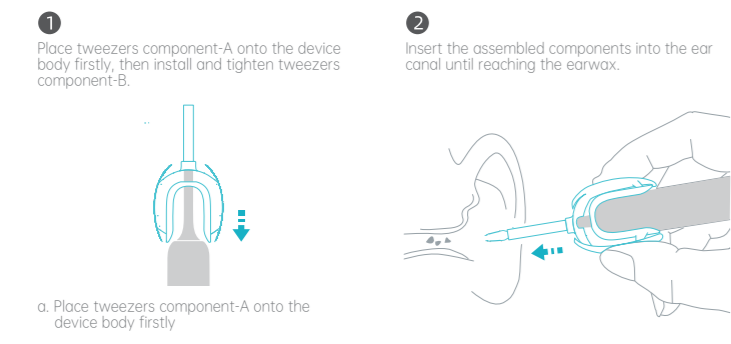
Usage of ear spoons and other accessories



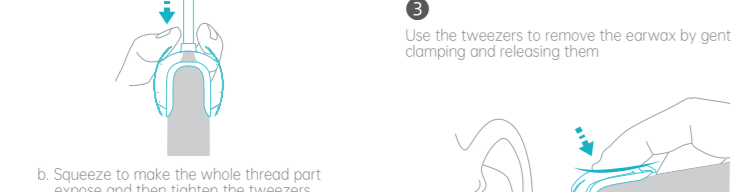
Warm Reminder
The default state of the earwax sticking head is covered with a protective cap. Please ensure to remove the cap before use.
The oil earwax scraper and earwax sticking head are disposable accessories. Dispose of them promptly after use.
To prevent cross-infection, it is recommended to clean the silicone-wrapped ear spoon, silicone-wrapped ring-shaped ear spoon, smooth round-tipped metal ear spoon and soothing tip thoroughly after use, so they are ready for the next time.

背面

Installation and use of tweezers component



1 Place tweezers component A onto the device body firstly, then install and tighten tweezers component B.

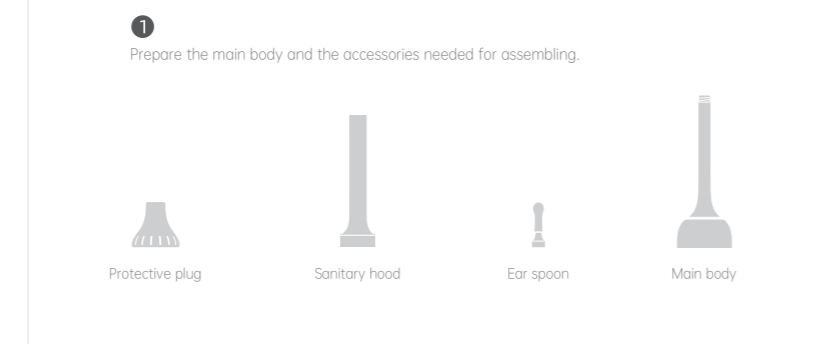


2 Squeeze to make the whole thread part expose and then tighten the tweezers head.

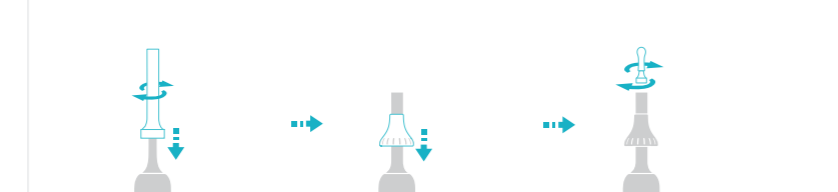
3 Use the tweezers to remove the earwax by gently clamping and releasing them.

Warm Reminder
Install the tweezers component correctly before use to avoid its loosening or falling off.

Installation of protective plug



1 Prepare the main body and the accessories needed for assembling.



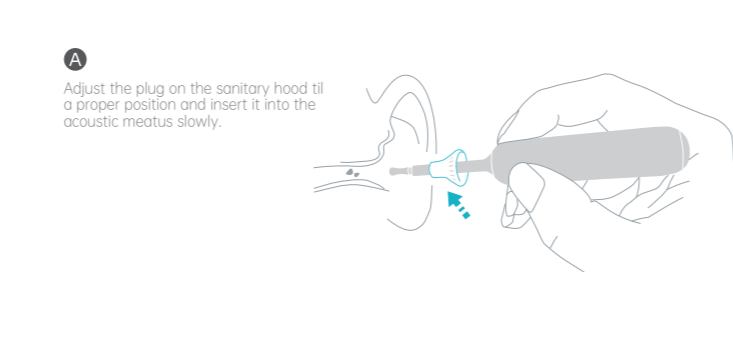
2 Follow steps A, B and C to install the sanitary hood, plug and the ear spoon.

A Mount the sanitary hood onto the main body and tighten it.

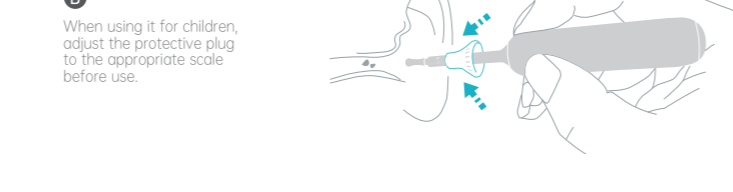
B Mount the protective plug onto the sanitary hood.

C Install and tighten the ear spoon.

Usage of ear canal protective plug



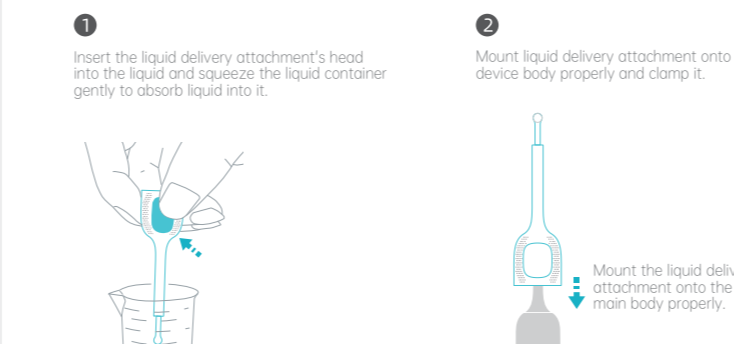
1 Adjust the plug on the sanitary hood to a proper position and insert it into the acoustic meatus slowly.



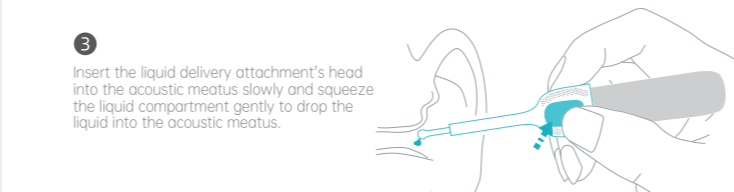
2 When using it for children, adjust the protective plug to the appropriate scale before use.

Warm Reminder
When in use, make sure the plug is in a proper position. If it is inserted into the acoustic meatus excessively, the acoustic meatus may be injured.

Installation and use of Liquid delivery attachment



1 Insert the liquid delivery attachment's head into the acoustic meatus slowly and squeeze the liquid compartment gently to drip the liquid into the acoustic meatus.



2 Mount the liquid delivery attachment onto the device body properly and clamp it.

Warm Reminder
Before use, please check the liquid delivery attachment. If it is damaged, replace it in time. Install the liquid delivery attachment properly to avoid its loosening or falling off in use.

List of accessories in different accessory cases

Accessory case	Accessory case for couple	Accessory case for child
Cap for ear checking X1	Silicone-wrapped ear Spoon X1	Silicone-wrapped ear Spoon X1
Tweezers attachment A X1	Earwax sticking head X3	Earwax sticking head X2
Liquid delivery attachment X1	Oily earwax scraper X5	Oily earwax scraper X2
Tweezers attachment B X1	Sanitary hood for adult X1	Sanitary hood for child X1
Ear canal protection plug X1	Silicone-wrapped ring-shaped ear spoon X1	Silicone-wrapped ring-shaped ear spoon X1
Ear guard accessories capsule X1	Accessory case for elder X1	Accessory case for child X1
USB cable x 1	Other accessories	
	Soothing tip X1	Soothing tip X1
	Smooth round-tipped metal ear spoon X1	Tweezers attachment B X1
	Accessory case for couple X1	Ear canal protection plug X1
		Accessory case for child X1
		Lens brush x 1

Troubleshooting

Fault	Solution
The product does not respond after power on.	Please charge the product with the matching USB cable.
The camera light cannot be lit.	Power off the product and power it on again.
The product crashes.	Download and install the App again.
The product indicators flash quickly.	Please charge the product with the matching USB cable.
The App fails to display real-time images normally after product connection.	Disconnect the App from the WiFi, power on the product and connect the WiFi again.
The WiFi is unstable and disconnects a couple of seconds after connection.	Restart the product and reconnect to the app.
The lens is blurry.	Inspect the lens for any foreign objects, and clean the lens with an alcohol-soaked cotton swab if necessary.

If the issue persists after following the above operations, please contact our customer service, and we will provide you with further effective solutions.

Hazardous substances

Component	Pb	Hg	Cd	Cr (VI)	PBB	PBDE
PCB	X	O	O	O	O	O
Shell	O	O	O	O	O	O
Plastic/silicone (Accessory)	O	O	O	O	O	O

This form is prepared according to SJ/T 11364.
 O It means that the content of a hazardous substance in all homogeneous materials of the component is below the limit given in GB/T 26572-2011.
 X It means that the content of a hazardous substance in at least one homogeneous material of the component exceeds the limit given in GB/T 26572-2011.

Parameters of product

Brand: bebird	Endurance: About 85 minutes	Optimum focal length: 13mm
Name: Smart Ear Cleaning Device	Charging time: About 60 minutes	Operating environment: 10°C - 50°C
Model: Home 30S Family Edition	Lens grade: 5P * 0.4 and fog resistant	Operating frequency: 2.4GHz
Image sensor: CMOS	Image transmission frame rate: 20fps	Network standard: IEEE 802.11b/g
Input current: 5V 250.5A	Intelligent orientation: 9-axis intelligent gyroscope	

Cautions

- Wipe the lens with cotton swabs with alcohol.
- Assemble the product accessories properly to avoid its falling off in use.
- Please clean and disinfect liquid delivery components thoroughly before and after use.
- Before use, please observe the operating environment. Do not use the product in a place it tends to be impacted.
- The product has a built-in rechargeable battery. If the product is not frequently used, it is suggested to charge on the market only. Do not use for other purposes. Please check whether it is applicable with reference to the User's Manual and the doctor's advice.
- Children are prohibited from using this product alone to avoid accidental injury.
- Avoid direct sunlight exposure on the main body and accessories to prevent them from yellowing.
- Please do not put the device inside any form of liquid.
- While in use, it's normal for the device temperature to rise slightly due to the LED lights. (According to laboratory data: maximum about 45°C.)
- The liquid delivery attachment can be used with the ear drops sold on the market only. Do not use for other purposes. Please check whether it is applicable with reference to the User's Manual and the doctor's advice.
- Please use the tweezers to clamp earwax and other foreign matters in the acoustic meatus only.

Warranty Service

Customer information	
Name:	_____ Tel: _____
Vendor:	_____ Address of consignee: _____

FCC Statement

This equipment has been tested and found to comply with the limits for a Class B digital device, pursuant to part 15 of the FCC Rules. These limits are designed to provide reasonable protection against harmful interference in a residential installation. This equipment generates, uses and can radiate radio frequency energy and, if not installed and used in accordance with the instructions, may cause harmful interference to radio communications. However, there is no guarantee that interference will not occur in a particular installation. If this equipment does cause harmful interference to radio or television reception, which can be determined by turning the equipment off and on, the user is encouraged to try to correct the interference by one or more of the following measures:

- Reorient or relocate the receiving antenna.
- Increase the separation between the equipment and receiver.
- Connect the equipment into an outlet on a circuit different from that to which the receiver is connected.
- Consult the dealer or an experienced radio/TV technician for help.

Caution: Any changes or modifications to this device not explicitly approved by manufacturer could void your authority to operate this equipment. This device complies with part 15 of the FCC Rules. Operation is subject to the following two conditions: (1) This device may not cause harmful interference, and (2) this device must accept any interference received, including interference that may cause undesired operation.

RF Exposure Information

The device has been evaluated to meet general RF exposure requirement.

The device can be used in 0mm exposure condition, compliance with exposure requirements.