

骨传导运动耳机

Bone conduction sports headphones



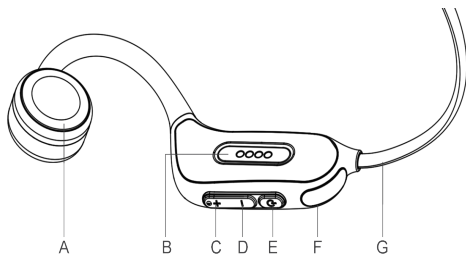
使用指南

Operating guide

重要安全提示

使用前请认真完整的阅读本提示及使用说明书。
请在把产品交给第三方时务必附带本提示及使用说明书。

按键功能部件概述



- A. 骨传导喇叭发声单元
- B. 磁吸充电接口
- C. 音量加键/下一曲
- D. 音量减键/上一曲
- E. 多功能键/开关机键
- F. 夜跑指示灯/工作指示灯
- G. 头戴记忆钢丝

充电使用

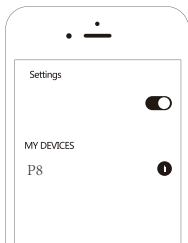
当耳机低电压时，红灯1秒闪1次，并且有报警音，此时请接上电源适配器对耳机进行充电，否则当耳机电量过低时耳机会自动关机。

耳机通过磁吸数据线充电完成后，工作指示灯从红色（常亮）变为蓝色（常亮）。注意：请使用符合国家标准且通过CCC认证的直流5V电源适配器进行充电。

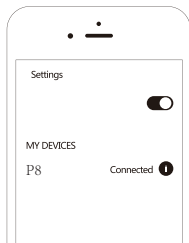
蓝牙配对

●首次开机配对：

关机状态下，长按多功能键3秒，蓝灯常亮1秒，红/蓝灯交替闪烁，耳机开机并且直接进入手机蓝牙配对搜索状态。然后打开手机或蓝牙设备，从蓝牙列表中，找到”P8”，并点击连接。



搜索耳机



连接成功

按键操作

● 开机耳机：

关机状态下，长按多功能键3秒，直至看见蓝灯亮，并伴有“滴滴”提示音，自动进入配对模式，红/蓝交替闪烁，已经配对过的设备会自动连接。

● 关机耳机：

开机状态下，长按多功能键4秒，直至看见红灯亮，并伴有“滴滴”提示音。

● 断开和再连接：

耳机与设备超出蓝牙连接距离后，耳机会断开连接，有“滴滴”提示音，3分钟之内回到耳机和设备连接范围会自动回连，超过3分钟会进入待机状态，如果5分钟后仍未连接，耳机会自动关机。

● 蓝牙模式和本地存储模式切换：

开机状态下，双击多功能键，蓝牙模式和本地存储模式轮流切换，并伴有“Bluetooth mode”或“Card mode”提示音。

● 夜跑灯模式开启或关闭：

开机状态下，三击多功能键，夜跑灯模式常亮、爆闪、关闭三种模式切换。

● 接听/拒接电话：

来电时，短按多功能键，接听，并伴有“滴滴”或手机自带提示音；长按多功能键，拒接；

● 挂断电话：

通话时，单击多功能键，完成挂断；

● 静音/解禁静音通话切换：

通话时，长按音量加键3秒，绿灯亮并伴有“滴滴”提示音，表示静音模式开启或关闭；

● 播放/暂停音乐：

短按多功能键, 音乐播放/暂停；

● 音量加或下一曲：

短按音量加键, 音量加大, 长按音量加键, 切换下一曲;最大音量伴有“滴滴滴”提示音；

● 音量减或上一曲：

短按音量减键, 音量减小, 长按音量减键, 切换上一曲;最小音量伴有“滴滴滴”提示音；

● 如何拷贝数据：

任何状态下, 数据线插入PC或者手机（要有OTG转接头），读取到U盘，并将所需要的歌曲或者数据文件拷贝至设备内；

注意事项：

● 开机没有连接任何手机，5分钟后自动关机。

● 首次使用请将本产品充满电。

● 充电时请将充电接口处汗水擦拭干净并保持干燥未短路。

● 请勿将产品长期浸泡在液体里。

● 请勿以任何理由拆除或维修改装本产品，否则可能会导致起火，电子击穿甚至彻底损坏本产品。

● 如充电完毕，请断开充电器与本设备的连接，需拔掉充电器，连续充电时间请勿超过12小时。

● 请不要将旧电池扔在旧生活垃圾中进行处理，若电池处置不当可能会导致电池起火或爆炸，请遵守当地规定处理本产品，电池及其他附件，电池不得暴露在过热的环境中。

- 电池禁止拆卸，撞击，挤压或投入火中，若出现严重膨胀，请勿继续使用。
- 请勿自行维修本产品。
- 消费者若使用电源适配器充电，应购买配套使用获得CCC认证并满足标准的电源适配器。

基本参数

- 重量：裸机32.5g
- 耳机类型：夜跑骨传导蓝牙耳机
- 耳机尺寸：135*101*45mm
- 蓝牙版本：V5.3
- 传输距离：10M
- 频响范围：140Hz ~15KHz
- 播放时长：6小时（约80%音量）
- 充电时间：1.5小时
- 充电输入：DC 5.0V==150mA
- 电池容量：180mAh
- 防水等级：IPX8

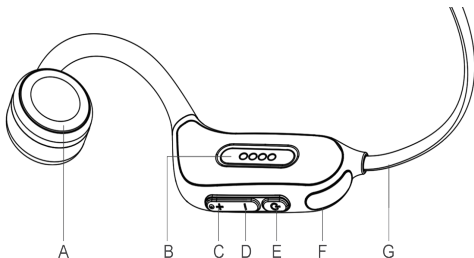
以上若依然没有解决您的问题，建议及时联系您所购买的经销商，及时为您提供技术支持和售后服务，再次感谢您的支持！

Important Safety Tips

Please read this prompt and instruction manual carefully and completely before use.

Please be sure to include this tip and instruction manual when handing over the product to a third party.

Feature Overview



- A. Bone conduction speaker unit
- B. Magnetic charging interface
- C. Volume up key/Next song
- D. Volume down/previous song
- E. Multi-function key / switch key
- F. Night running indicator/work indicator
- G. Wearing memory wire on the head

Charging Instructions

When the voltage of the headset is low, the red light flashes once per second, and there is an alarm sound. At this time, please connect the power adapter to charge the headset, otherwise the headset will automatically shut down when the power of the headset is too low.

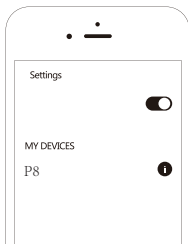
After the headset is charged through the magnetic data cable, the work indicator changes from red (steady on) to blue (steady on).

Note: Please use a DC 5V power adapter that meets national standards and has passed CCC certification for charging.

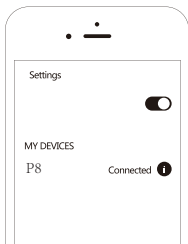
Bluetooth pairing

●First boot pairing:

In the off state, press and hold the multi-function button for 3 seconds, the blue light is always on for 1 second, the red/blue light flashes alternately, the headset is turned on and directly enters the mobile phone Bluetooth pairing search state. Then turn on your phone or bluetooth device, find "P8" from the bluetooth list, and click connect.



Search headset



Connection succeeded

Instructions

- **Turn on the headset:**

In the power-off state, press and hold the multi-function button for 3 seconds until you see the blue light on, accompanied by a "Di Di" sound, and automatically enter the pairing mode. The red/blue flashes alternately, and the paired device will be automatically connected.

- **Turn off the headset:**

In the power-on state, press and hold the multi-function button for 4 seconds until the red light is on, accompanied by a beeping sound.

- **Disconnect and Reconnect:**

When the headset and the device exceed the Bluetooth connection distance, the headset will be disconnected, and there will be a "Di Di" sound. It will automatically reconnect when it returns to the headset and device connection range within 3 minutes. If it exceeds 3 minutes, it will enter the standby state, if it is still not connected after 5 minutes, the headset will automatically shut down.

- **Switch between Bluetooth mode and local storage mode:**

In the power-on state, double-click the multi-function button, the Bluetooth mode and the local storage mode are switched alternately, and the prompt sound of "Bluetooth mode" or "Card mode" will be heard.

- **Night running light mode on or off:**

In the power-on state, three-click the multi-function button, the night running light mode will be switched between three modes: always on, flashing, and off.

- **To answer/reject calls:**

When there is an incoming call, short press the multi-function button to answer, accompanied by a "Di Di" or the phone's own prompt; long press the multi-function button to reject the call;

- **Hang up the call:**

During a call, click the multi-function button to hang up;

- **Mute/unmute call switching:**

During a call, press and hold the volume up button for 3 seconds, the green light will be on and accompanied by a beep sound, indicating that the silent mode is turned on or off;

- **Play/pause music:**

Short press the multi-function button to play/pause the music;

- **Volume up or next song:**

Short press the volume up key to increase the volume, long press the volume up key to switch to the next song; the maximum volume is accompanied by a "Di Di Di" prompt;

- **Volume down or previous song:**

Short press the volume down key to decrease the volume, long press the volume down key to switch to the previous song; the minimum volume is accompanied by a "Di Di Di" prompt;

- **How to copy data:**

In any state, insert the data cable into the PC or mobile phone (with an OTG adapter), read it to the U disk, and copy the required songs or data files to the device;

Precautions:

- It will automatically shut down after 5 minutes without connecting to any mobile phone.

- Please fully charge this product for the first use.

- When charging, please wipe the sweat off the charging interface and keep it dry and not short-circuited.

- Do not immerse the product in liquid for a long time.

- Do not dismantle or repair or modify this product for any reason, otherwise it may cause fire, electronic breakdown or even complete damage to this product.

- If charging is completed, please disconnect the charger from the device, unplug the charger, and do not charge more than 12 hours continuously.

- Please do not dispose of the old battery in the old household garbage. Improper disposal of the battery may cause the battery to catch fire or explode. Please dispose of this product, battery and other accessories in accordance with local regulations. The battery must not be exposed to excessive heat.
- The battery is forbidden to be disassembled, impacted, squeezed or thrown into fire. If it is severely swollen, please do not continue to use it.
- Do not repair this product by yourself.
- If consumers use a power adapter for charging, they should purchase a power adapter that has been certified by CCC and meets the standards.

Basic parameters

- Weight: bare metal 32.5g
- Headphone type: night running bone conduction bluetooth earphone
- Headphone size: 135*101*45mm
- Bluetooth version: V5.3
- Transmission distance: 10M
- Frequency response range: 140Hz ~15KHz
- Playing time: 6 hours (about 80% volume)
- Charging time: 1.5 hours
- Charging input: DC 5.0V==150mA
- Battery capacity: 180mAh
- Waterproof grade: IPX8

If the above still does not solve your problem, it is recommended to contact the dealer you purchased in time to provide you with technical support and after-sales service in time, thank you again for your support!

FCC STATEMENT :

This device complies with Part 15 of the FCC Rules. Operation is subject to the following two conditions:

- (1) This device may not cause harmful interference, and
- (2) This device must accept any interference received, including interference that may cause undesired operation.

Warning: Changes or modifications not expressly approved by the party responsible for compliance could void the user's authority to operate the equipment.

NOTE: This equipment has been tested and found to comply with the limits for a Class B digital device, pursuant to Part 15 of the FCC Rules. These limits are designed to provide reasonable protection against harmful interference in a residential installation. This equipment generates uses and can radiate radio frequency energy and, if not installed and used in accordance with the instructions, may cause harmful interference to radio communications. However, there is no guarantee that interference will not occur in a particular installation. If this equipment does cause harmful interference to radio or television reception, which can be determined by turning the equipment off and on, the user is encouraged to try to correct the interference by one or more of the following measures:

- Reorient or relocate the receiving antenna.

- Increase the separation between the equipment and receiver.

- Connect the equipment into an outlet on a circuit different from that to which the receiver is connected.

- Consult the dealer or an experienced radio/TV technician for help.

RF warning statement:

The device has been evaluated to meet general RF exposure requirement. The device can be used in portable exposure condition without restriction