

Worse case mode:		802.11g(6Mbps)		Test channel:		Lowest	
Frequency	Meter Reading	Factor	Emission Level	Limits	Over	Detector Type	Ant. Pol.
(MHz)	(dB $\mu$ V)	(dB)	(dB $\mu$ V/m)	(dB $\mu$ V/m)	(dB)		H/V
2390.000	58.90	-9.2	47.24	74	-26.76	peak	H
2390.000	44.13	-9.2	33.44	54	-20.56	AVG	H
2400.000	59.73	-9.39	51.27	74	-22.73	peak	H
2400.000	46.81	-9.39	38.06	54	-15.94	AVG	H
2390.000	58.86	-9.2	49.44	74	-24.56	peak	V
2390.000	44.14	-9.2	34.78	54	-19.22	AVG	V
2400.000	59.26	-9.39	51.92	74	-22.08	peak	V
2400.000	46.89	-9.39	37.69	54	-16.31	AVG	V

Worse case mode:		802.11g(6Mbps)		Test channel:		Highest	
Frequency	Meter Reading	Factor	Emission Level	Limits	Over	Detector Type	Ant. Pol.
(MHz)	(dB $\mu$ V)	(dB)	(dB $\mu$ V/m)	(dB $\mu$ V/m)	(dB)		H/V
2483.500	57.64	-9.29	48.77	74	-25.23	peak	H
2483.500	44.01	-9.29	32.34	54	-21.66	AVG	H
2483.500	57.87	-9.29	51.01	74	-22.99	peak	V
2483.500	45.75	-9.29	36.89	54	-17.11	AVG	V

Worse case mode:		802.11n(HT20)(6.5Mbps)		Test channel:		Lowest	
Frequency	Meter Reading	Factor	Emission Level	Limits	Over	Detector Type	Ant. Pol.
(MHz)	(dBμV)	(dB)	(dBμV/m)	(dBμV/m)	(dB)		H/V
2390.000	58.60	-9.2	48.15	74	-25.85	peak	H
2390.000	44.91	-9.2	32.67	54	-21.33	AVG	H
2400.000	59.61	-9.39	52.58	74	-21.42	peak	H
2400.000	46.37	-9.39	40.09	54	-13.91	AVG	H
2390.000	58.58	-9.2	51.74	74	-22.26	peak	V
2390.000	44.75	-9.2	34.02	54	-19.98	AVG	V
2400.000	59.59	-9.39	52.91	74	-21.09	peak	V
2400.000	46.05	-9.39	36.76	54	-17.24	AVG	V

Worse case mode:		802.11n(HT20)(6.5Mbps)		Test channel:		Highest	
Frequency	Meter Reading	Factor	Emission Level	Limits	Over	Detector Type	Ant. Pol.
(MHz)	(dBμV)	(dB)	(dBμV/m)	(dBμV/m)	(dB)		H/V
2483.500	57.44	-9.29	47.93	74	-26.07	peak	H
2483.500	43.92	-9.29	32.05	54	-21.95	AVG	H
2483.500	57.72	-9.29	50.12	74	-23.88	peak	V
2483.500	45.90	-9.29	37.34	54	-16.66	AVG	V

Worse case mode:		802.11n(HT40)(13.5Mbps)		Test channel:		Lowest	
Frequency	Meter Reading	Factor	Emission Level	Limits	Over	Detector Type	Ant. Pol.
(MHz)	(dBμV)	(dB)	(dBμV/m)	(dBμV/m)	(dB)		H/V
2390.000	58.49	-9.2	48.83	74	-25.17	peak	H
2390.000	44.92	-9.2	33.63	54	-20.37	AVG	H
2400.000	59.38	-9.39	50.92	74	-23.08	peak	H
2400.000	46.62	-9.39	39.60	54	-14.40	AVG	H
2390.000	58.45	-9.2	50.52	74	-23.48	peak	V
2390.000	44.32	-9.2	34.58	54	-19.42	AVG	V
2400.000	59.97	-9.39	52.12	74	-21.88	peak	V
2400.000	46.31	-9.39	38.83	54	-15.17	AVG	V

Worse case mode:		802.11n(HT40)(13.5Mbps)		Test channel:		Highest	
Frequency	Meter Reading	Factor	Emission Level	Limits	Over	Detector Type	Ant. Pol.
(MHz)	(dBμV)	(dB)	(dBμV/m)	(dBμV/m)	(dB)		H/V
2483.500	57.87	-9.29	49.79	74	-24.21	peak	H
2483.500	43.79	-9.29	33.78	54	-20.22	AVG	H
2483.500	58.37	-9.29	49.83	74	-24.17	peak	V
2483.500	45.74	-9.29	37.42	54	-16.58	AVG	V

**Note:**

The field strength is calculated by adding the Antenna Factor, Cable Factor & Preamplifier. The basic equation with a sample calculation is as follows:

*Final Test Level = Receiver Reading + Antenna Factor + Cable Factor – Preamplifier Factor*

## 6 Photographs - EUT Test Setup

### 6.1 Radiated Spurious Emission

9kHz~30MHz:



30MHz~1GHz:



Above 1GHz:



## 6.2 Conducted Emission





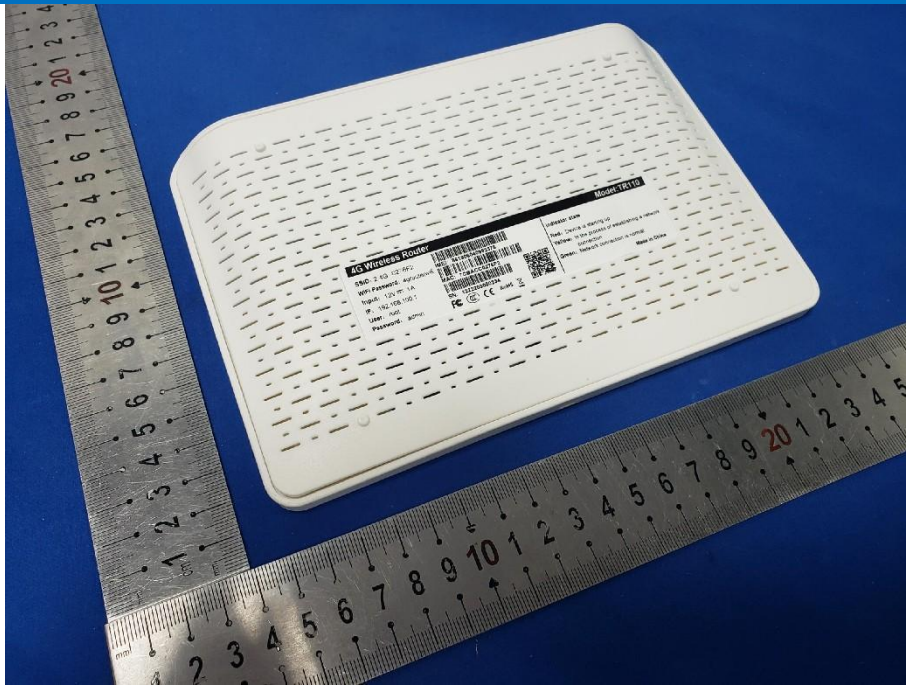
## 7 Photographs - EUT Constructional DeAtails

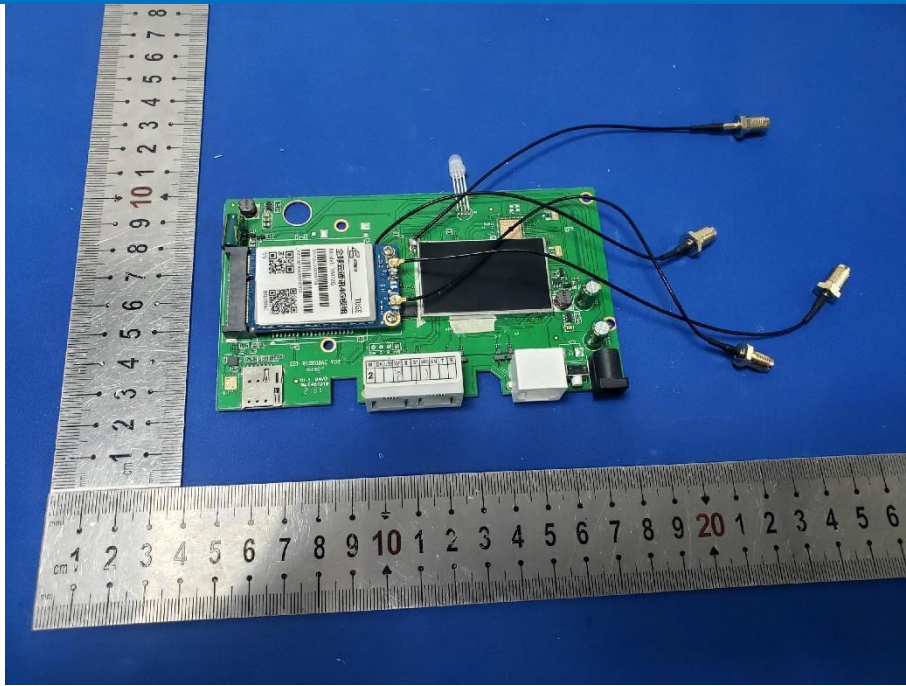




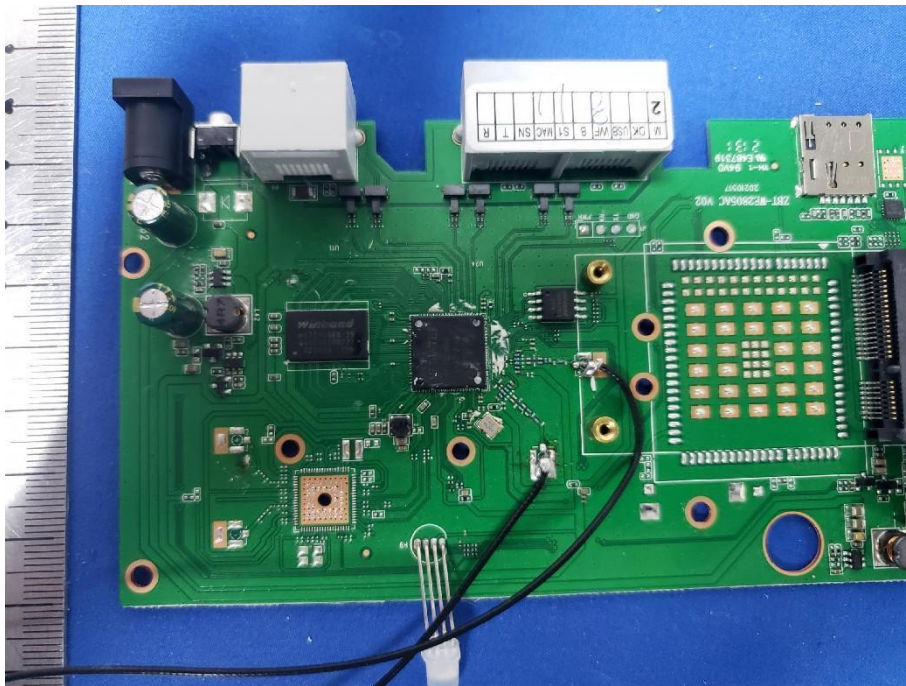
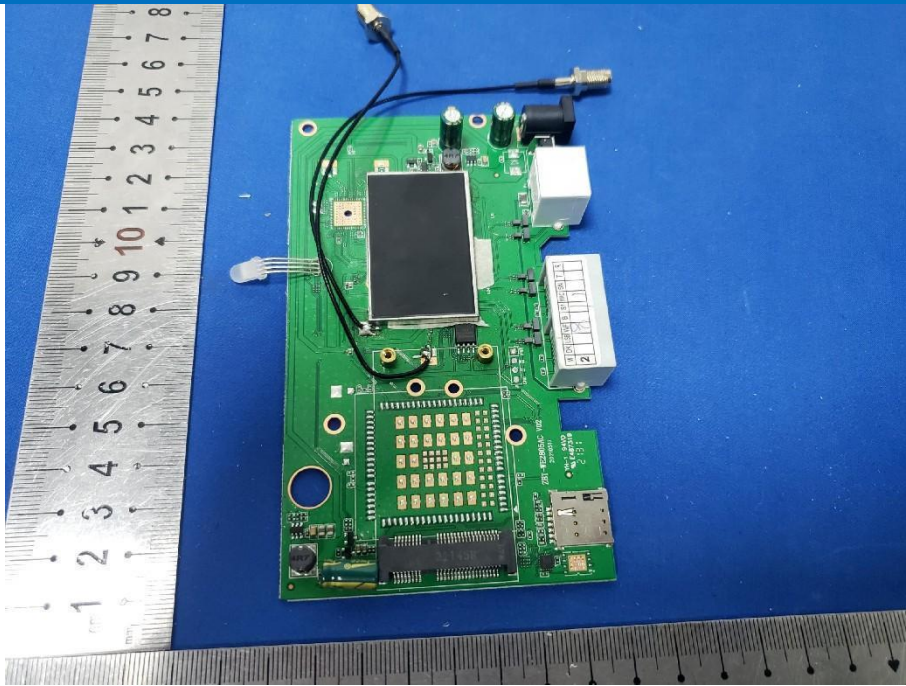


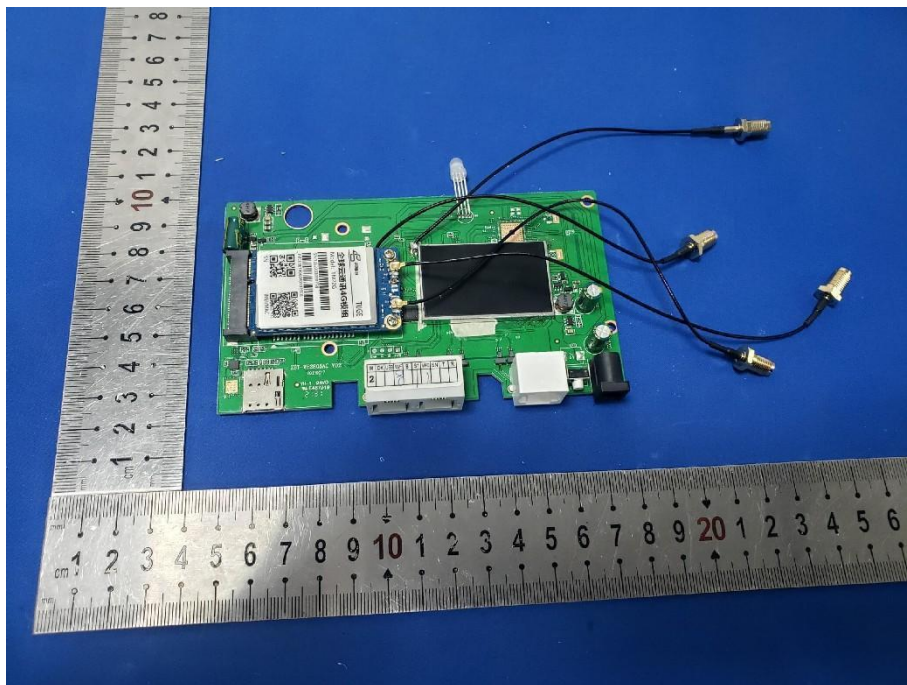
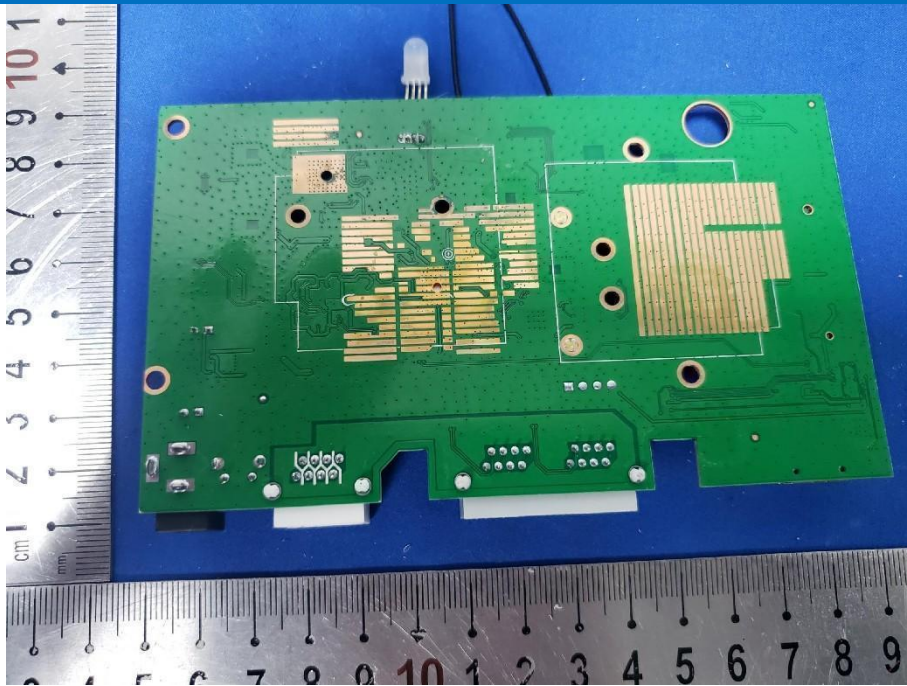




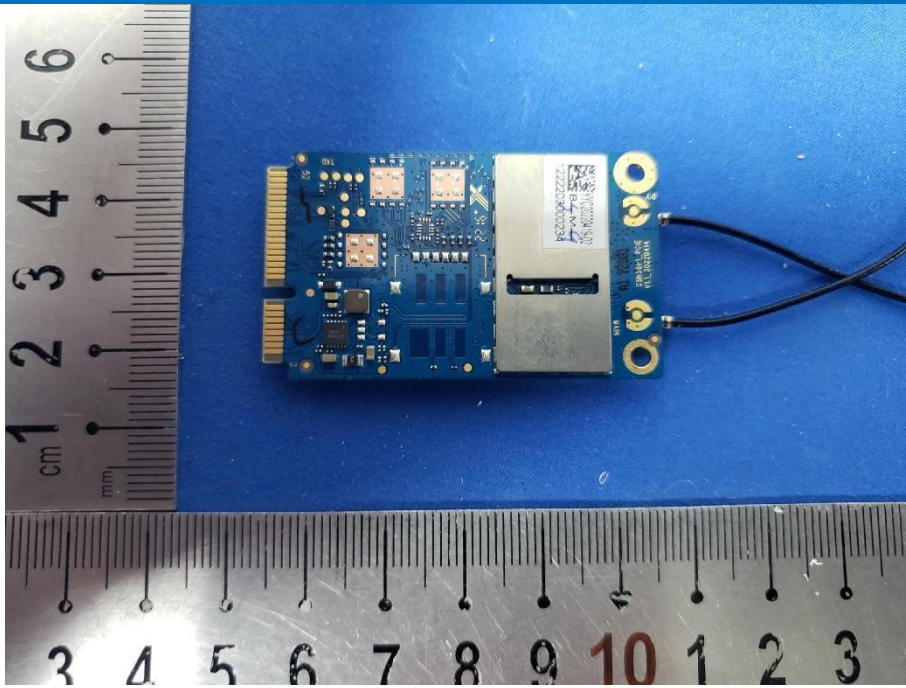












\*\*\* END OF REPORT \*\*\*