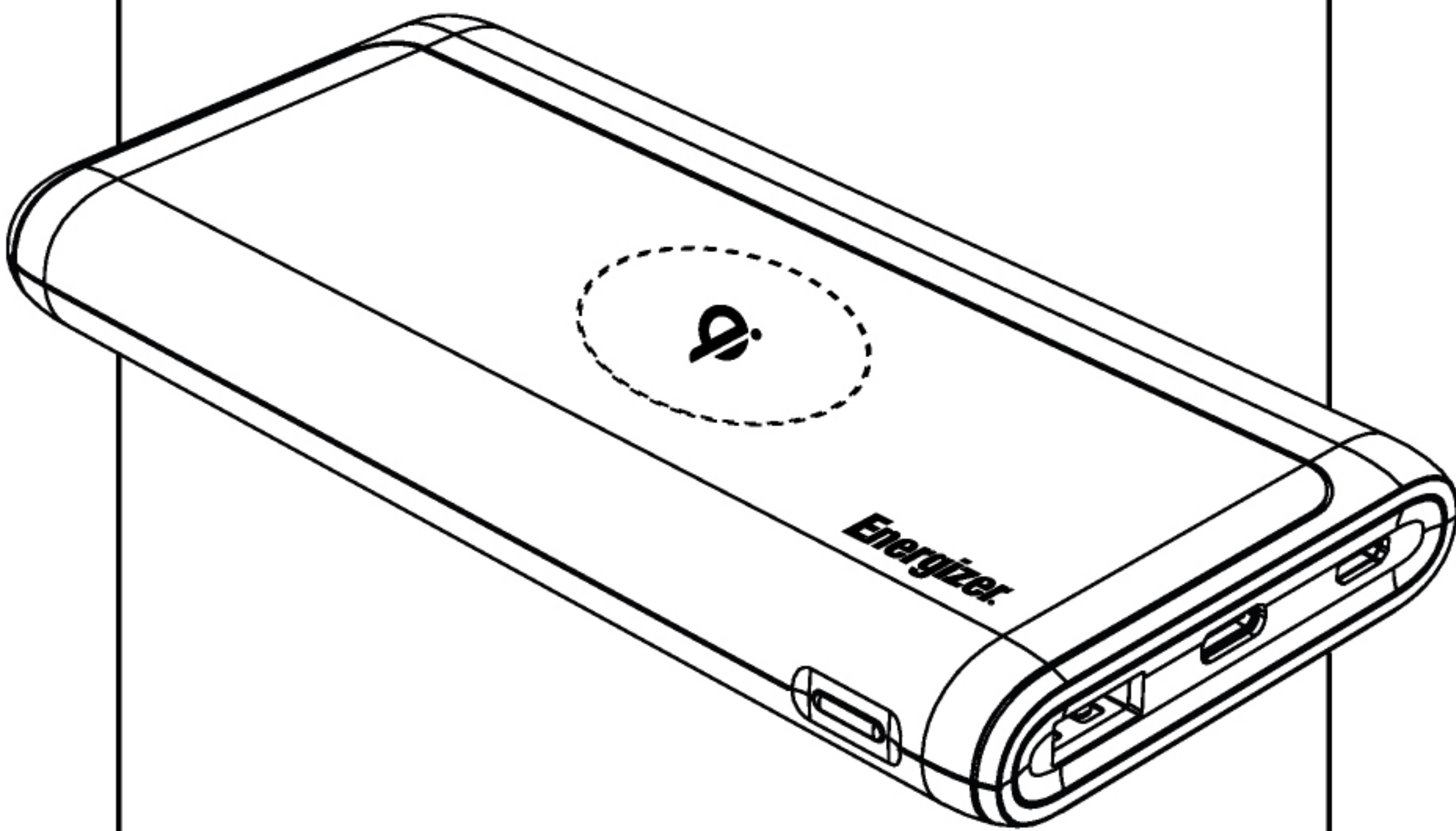


Energizer

QE10011PQ



EN

Specification:

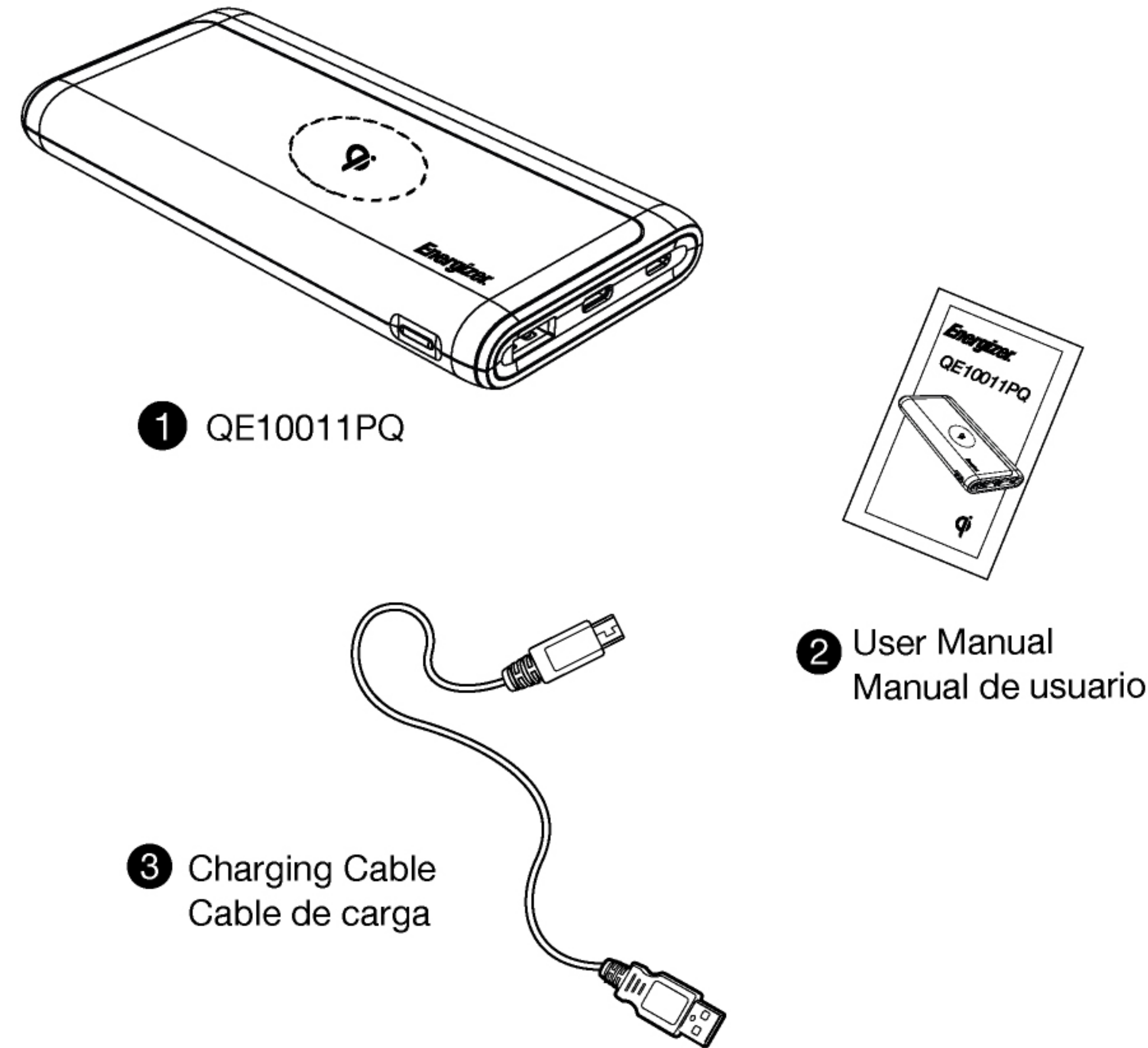
Model Name : QE10011PQ
Cell Type : Lithium Polymer
Battery Capacity : 10000 mAh/ 37Wh (Max.)
Rated Input : Micro USB 5V/2A
Rated Output 1 : USB-A Quick Charge 5V/3A, 9V/2A, 12V/1.5A
Rated Output 2 : USB-C PD 5V/2A, 9V/2A, 12V/1.5A
Wireless Output : 5W/7.5W/10W
Total Output : 18W (Max.)
Dimensions : 141(L)*69(W)*17(H) mm
Weight : 237g±10g

SP

Especificaciones:

Modelo : QE10011PQ
Tipo de celda : Polímeros de Litio
Capacidad de la batería : 10000 mAh/ 37Wh (Max.)
Tensión de Entrada : Micro USB 5V/2A
Tensión de Salida 1 : USB-A Quick Charge 5V/3A, 9V/2A, 12V/1.5A
Tensión de Salida 2 : USB-C PD 5V/2A, 9V/2A, 12V/1.5A
Salida inalámbrica : 5W/7.5W/10W
Producción total : 18W (Max.)
Dimensiones : 141(L)*69(W)*17(H) mm
Peso : 237g±10g

Package Contents Contenido del paquete



How to USE Modo de uso



Please do not charge more than 2 devices at once (wireless charger is included)
No cargue más de 2 dispositivos al mismo tiempo (incluyendo la carga inalámbrica)

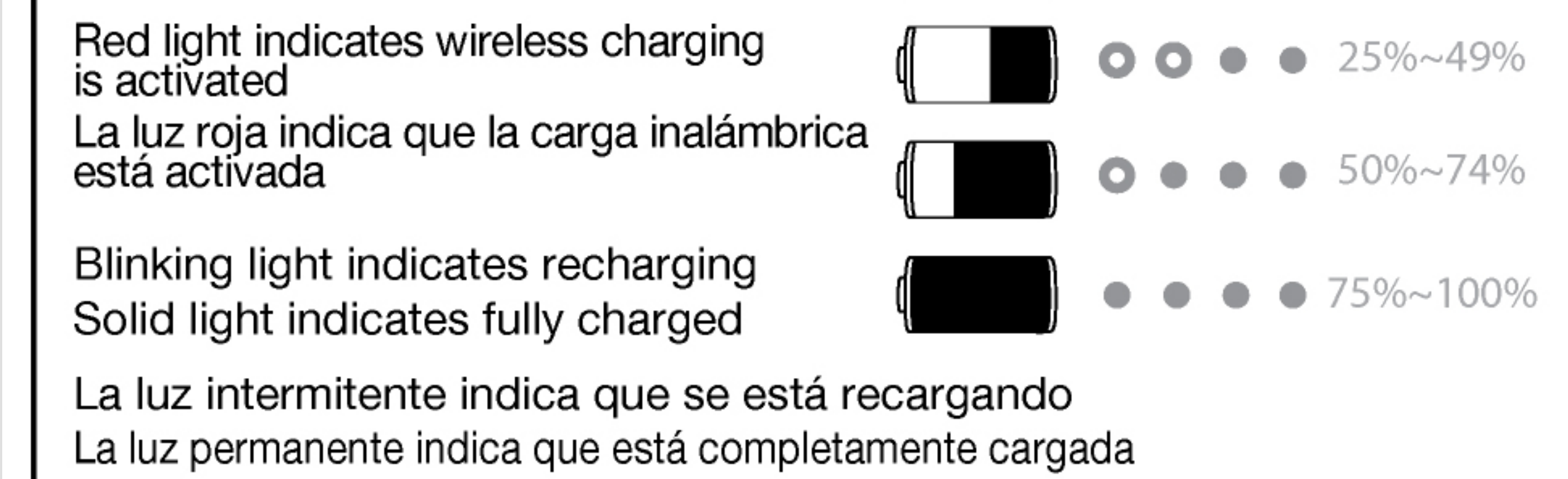
For fast charge (via cable): connect only one device to power bank to activate fast charge, do not press the power button
Para carga rápida (por cable): conecte solo un dispositivo a la batería para activar la carga rápida, no pulse el botón de encendido.

For wireless: press the power button once to activate wireless charging, fast charge (via cable) will switch to normal charging mode. After 2 mins of idle, wireless charging will shut off, fast charge will then resume
Para la carga inalámbrica: pulse el botón de encendido una vez para activar la carga inalámbrica, la carga rápida (por cable) cambiará al modo de carga normal. Tras 2 minutos de espera, se desactivará la carga inalámbrica y se reanudará la carga rápida (por cable).

Red light indicates wireless charging is activated
La luz roja indica que la carga inalámbrica está activada

Blinking light indicates recharging
Solid light indicates fully charged
La luz intermitente indica que se está recargando
La luz permanente indica que está completamente cargada

Para la carga inalámbrica: pulse el botón de encendido una vez para activar la carga inalámbrica, la carga rápida (por cable) cambiará al modo de carga normal. Tras 2 minutos de espera, se desactivará la carga inalámbrica y se reanudará la carga rápida (por cable).



Safety Instruction

- Avoid water, heat, fire, penetration of the battery, and severe drops at all times.
- Do not insert other objects into the USB ports other than the USB connectors.
- Once the product is fully charged, your power pack automatically shuts off to save power.
- During charge & recharge, battery may feel slightly warm.
- Do not clean the battery with water or other cleaning products, clean the exterior with a lightly wetted cloth or napkin.
- Normally the battery performance will decline after 2 years
- Any intentional and physical damage to the battery will not be under the warranty conditions.
- Battery storage temperature is between -10°C~+60°C, operating temperature is 0°C~45°C.
- Fully charge the battery before first use to maximize the battery life.

Instrucciones de seguridad

- Evite el agua, el calor, el fuego, las intrusiones en la batería y fuertes caídas en todo momento.
- No inserte otros objetos en los puertos USB distintos a los conectores USB.
- Una vez el producto esté completamente cargado, su fuente de alimentación se apagará automáticamente para ahorrar energía.
- Durante la carga y recarga, la batería puede estar ligeramente caliente.
- No limpie la batería con agua u otros productos de limpieza. Limpie el exterior con un paño o una servilleta ligeramente humedecida.
- Normalmente el rendimiento de la batería será más bajo tras 2 años.
- Cualquier daño intencional o físico a la batería no estará sujeto a las condiciones de la garantía.
- La temperatura de almacenamiento de la batería oscila entre -10°C~+60°C. La temperatura de funcionamiento es de 0°C~45°C.
- Cargue completamente la batería antes de usarla por primera vez para maximizar su vida útil.

WARRANTY

All products from the date of purchase are qualified for limited time warranty. For more warranty information, please visit: <http://www.energizerpowerbanks.com>

GARANTIA

Todos los productos desde la fecha de compra gozan de la garantía de tiempo limitado. Para más información sobre la garantía, puede visitar: <http://www.energizerpowerbanks.com>



PowerSafe Management
Guarantees against short circuit and over-charging for your power bank and devices.



Customer Service
For any question about the product, please contact us at service@energizerpowerbanks.com

Dispose the battery properly, seek for local disposal facility for advice. Do not dispose, disassemble, damage, or incinerate the battery at all time.

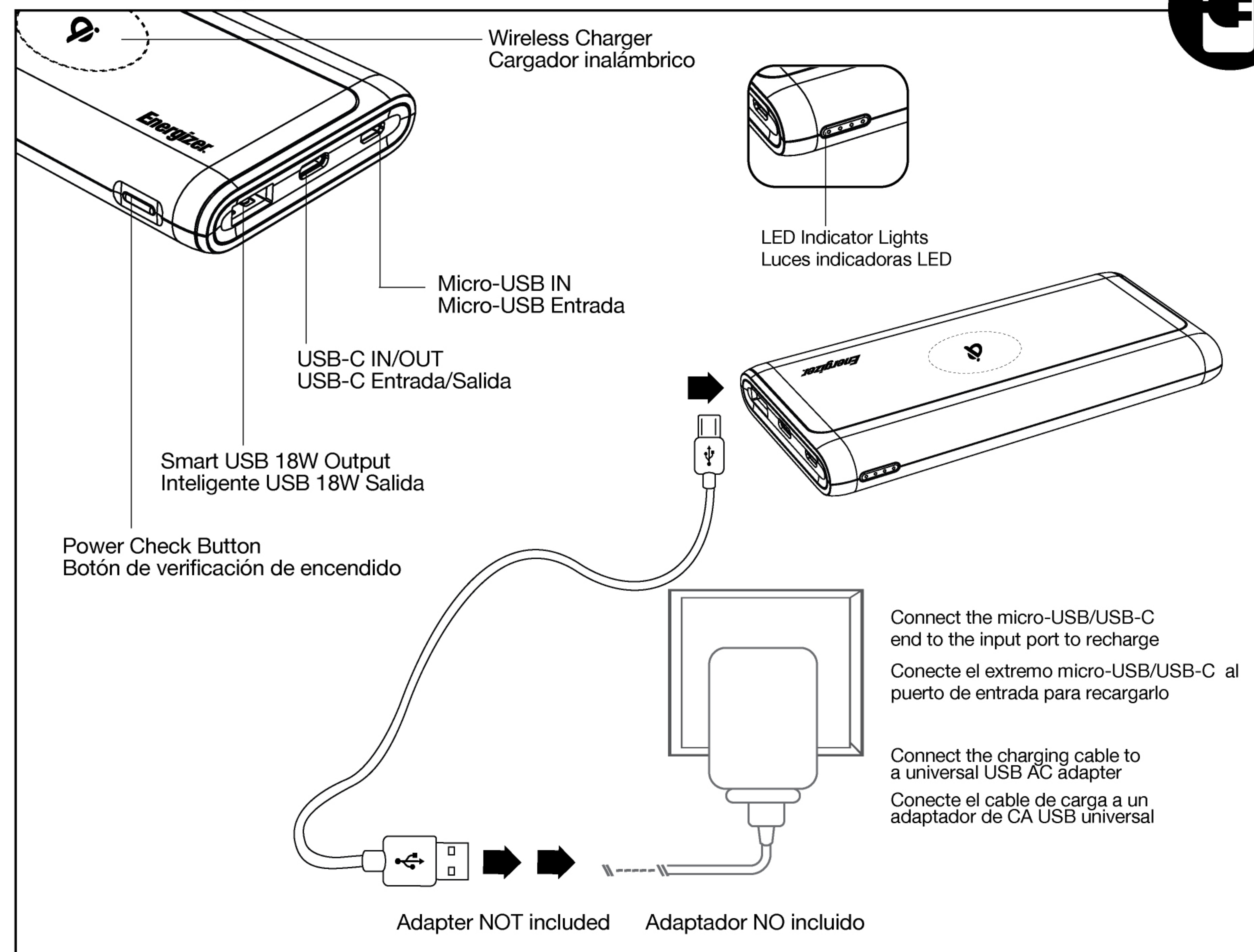
Deseche la batería de la manera adecuada. Busque un centro de procesamiento de residuos local para que le asesoren al respecto. No deseche, desmonte, dañe o incinere la batería en cualquier momento.

©2021 Energizer. Energizer, Energizer Character and certain graphic designs are trademarks of Energizer Brands, LLC and related subsidiaries and are used under license by TennRich International Corp..



FCC ID: 2AU4P-QE10011PQ

How to Recharge Modo de recarga



FCC Statement

This device complies with part 15 and part 18 of the FCC Rules. Operation is Subject To the following two conditions: (1) This device may not cause harmful interference, and (2) this device must accept any interference received, including interference that may cause undesired operation. Changes or modifications not explicitly approved by the party responsible for compliance could void the user's authority to operate this equipment.

Note: this equipment has been tested and found to comply with the limits for a Class B digital device, pursuant to part 15 and part 18 of the FCC Rules. These limits are designed to provide reasonable protection against harmful interference in a residential installation.

This equipment generates, uses and can radiate radio frequency energy and, if not installed and used in accordance with the instructions, may cause harmful interference to radio communications. However, there is no guarantee that interference will not occur in a particular installation. If this equipment does cause harmful interference to radio or television reception, which can be determined by turning the equipment off and on, the user is encouraged to try to correct the interference by one or more of the following measures:

- Reorient or relocate the receiving antenna.
 - Increase the separation between the equipment and receiver.
 - Connect the equipment into an outlet on a circuit different from that to which the receiver is connected.
 - Consult the dealer or an experienced radio/TV technician for help. The equipment complies with FCC radiation exposure limits set forth for an uncontrolled environment. During the operation of device a distance of 15 cm surrounding the device and 20 cm above the top surface of the device must be respected. This device complies with Part 18 of the FCC Rules. This equipment generates uses and can radiate radio frequency energy and, if not installed and used in accordance with the instructions, may cause harmful interference to radio communications. If this equipment does cause harmful interference to radio or television reception, which can be determined by turning the equipment off and on, the user is encouraged to try to correct the interference by one or more of the following measures:
- Increase the separation between the equipment and any other radio device.
 - Connect the equipment into an outlet on a circuit different from that to which the receiver is connected.