

## TEST REPORT

Test Report No.: 1-4988/22-01-04-A

ENetzA-CAB-02/21-102

### Testing Laboratory

**CTC advanced GmbH**

Untertürkheimer Straße 6 – 10  
66117 Saarbrücken/GERMANY  
Phone: + 49 681 5 98 - 0  
Fax: + 49 681 5 98 - 9075  
Internet: <https://ctcadvanced.com/>  
e-mail: mail@ctcadvanced.com

**Accredited Testing Laboratory:**

The testing laboratory (area of testing) is accredited according to DIN EN ISO/IEC 17025 (2018-03) by the Deutsche Akkreditierungsstelle GmbH (DAkkS). The accreditation is valid for the scope of testing procedures as stated in the accreditation certificate starting with the registration number: D-PL-12076-01.

### Applicant

**X2E GmbH**

Große Ahlmühle 19  
76865 Rohrbach/GERMANY  
Contact: Gerhard Spengler  
e-mail: [gerhard.spengler@x2e.de](mailto:gerhard.spengler@x2e.de)

### Manufacturer

**X2E GmbH**

Große Ahlmühle 19  
76865 Rohrbach/GERMANY  
Contact: Gerhard Spengler

### Test Standard/s

**FCC - Title 47 CFR  
Part 15: 2022**

FCC - Title 47 of the Code of Federal Regulations; Chapter I; Part 15 - Radio frequency devices

**ICES-003, Issue 7:  
2020**

ICES-003 — Information Technology Equipment (including Digital Apparatus)

### Test Item

**Kind of test item:** Data Logger

**Model name:** N4000+

detailed information see chapter 6.1 and 6.2 of this test report



This test report is electronically signed and valid without handwritten signature. The public keys can be requested at the test laboratory to verify the electronic signatures.

### Test report authorised:

Jens Hennemann  
Lab Manager  
Electromagnetic Compatibility & Acoustics

### Test performed:

p.o.  
Uli Kraus  
Head of Department  
Electromagnetic Compatibility & Acoustics

## 1 Table of contents

1	Table of contents .....	2
2	General information .....	3
2.1	Notes and disclaimer .....	3
2.2	Application details .....	4
3	Test standard/s: .....	4
4	Test Environment .....	4
5	Test Laboratories sub-contracted .....	4
6	Information about Test Conditions .....	5
6.1	Test Item .....	5
6.2	EUT: Type, S/N etc. and short descriptions used in this test report .....	5
6.3	EUT: Variants and description (acc. customers information) .....	6
6.4	Set-ups .....	7
6.5	EUT Operating Modes .....	10
7	Summary of Test Results .....	11
7.1	Emission .....	11
7.2	Measurement and Test Set-up .....	12
7.3	Measurement uncertainty .....	12
7.4	Reporting statements of conformity – decision rule .....	12
8	Detailed test results - Emission .....	13
8.1	Conducted Emission .....	13
8.2	Electromagnetic Radiated Emissions (Distance 10 m) .....	20
8.3	Electromagnetic Radiated Emissions (Distance 5 m) .....	27
9	Test equipment and ancillaries used for tests .....	34
10	Observations .....	36
Annex A	Photographs of the test set-up .....	37
Annex B	Photographs of the EUT .....	42
Annex C	Document history .....	53
Annex D	Further information .....	53

## 2 General information

### 2.1 Notes and disclaimer

The test results of this test report relate exclusively to the test item specified in this test report. CTC advanced GmbH does not assume responsibility for any conclusions and generalizations drawn from the test results with regard to other specimens or samples of the type of the equipment represented by the test item.

The test report may only be reproduced or published in full. Reproduction or publication of extracts from the report requires the prior written approval of CTC advanced GmbH.

The testing service provided by CTC advanced GmbH has been rendered under the current "General Terms and Conditions for CTC advanced GmbH".

CTC advanced GmbH will not be liable for any loss or damage resulting from false, inaccurate, inappropriate or incomplete product information provided by the customer.

Under no circumstances does the CTC advanced GmbH test report include any endorsement or warranty regarding the functionality, quality or performance of any other product or service provided.

Under no circumstances does the CTC advanced GmbH test report include or imply any product or service warranties from CTC advanced GmbH, including, without limitation, any implied warranties of merchantability, fitness for purpose, or non-infringement, all of which are expressly disclaimed by CTC advanced GmbH.

All rights and remedies regarding vendor's products and services for which CTC advanced GmbH has prepared this test report shall be provided by the party offering such products or services and not by CTC advanced GmbH. In no case this test report can be considered as a Letter of Approval.

The present test report can only be used for the sDOC procedure in the USA if the „Responsible Party“ (located in USA) or an official of the responsible party confirms the report in writing, as designated in FCC§2.938.

This test report is electronically signed and valid without handwritten signature. For verification of the electronic signatures, the public keys can be requested at the testing laboratory.

**This test report is a new release and replaces all former versions of this report. Please refer to Annex C “Document history” for further information**

## 2.2 Application details

Date of receipt of order: 2022-09-28  
Date of receipt of test item: 2022-09-28  
Start of test<sup>1)</sup>: 2022-09-28  
End of test<sup>1)</sup>: 2022-09-29

<sup>1)</sup> Date of each measurement, if not shown in the plot, can be requested. Dates are stored in the measurement software.

## 3 Test standard/s:

Test Standard	Test Standard Description
<b>FCC - Title 47 CFR Part 15: 2022</b>	FCC - Title 47 of the Code of Federal Regulations; Chapter I; Part 15 - Radio frequency devices
<b>ICES-003, Issue 7: 2020</b>	ICES-003 — Information Technology Equipment (including Digital Apparatus)
<b>ANSI C63.4a:2017</b>	American National Standard for Methods of Measurement of RadioNoise Emissions from Low-Voltage Electrical and Electronic Equipment in the Range of 9 kHz to 40 GHz Amendment 1: Test Site Validation

## 4 Test Environment

Temperature: 15°C – 35°C  
Relative humidity content: 30 % - 60 %  
Air pressure: 860 – 1060 hPa  
Power supply of measurement equipment: 230 V / 50 Hz

## 5 Test Laboratories sub-contracted

---

## 6 Information about Test Conditions

### 6.1 Test Item

<b>Kind of test item</b> :	<b>Data Logger</b>		
<b>Type identification</b> :	<b>N4000+</b>		
<b>Equipment classification:</b>	Equipment for fixed use		
<b>Environment classification:</b>	Industrial environment		
<b>Supply voltage</b> :	AC 120 V/ 60 Hz via Power supply		
	<b>Input</b>	<b>Direction</b>	<b>Length</b>
	DC 12 V power port and signal port	Input	> 3m
	Signal/control port: see 6.2 to 6.4	In / output	> 3m
	Telecommunication port: see 6.2 to 6.4	In / output	> 3m
<b>Is mounting position / usual operating position defined?</b>	Table top		
<b>Additional information:</b>			
Test set-up / cabling / operating modes of EUT during tests according to customer (see also 6.2 to 6.4)			
FCC ID: 2AU4HN4000P			
Test set-up / cabling / operating modes of EUT during tests according to customer. - this is a class A digital device:			
the instructions furnished the user shall include a statement according to §15.105 of the used FCC rules			

### 6.2 EUT: Type, S/N etc. and short descriptions used in this test report

short description*)	EUT	Type	S/N serial number	HW hardware status	SW software status
<b>EUT A</b>	Data Logger	Xoraya N4000+ Version 1	0000E7	2.01	4.0b.809d
<b>EUT B</b>	Data Logger	Xoraya N4000+ Version 2	0000E6	2.01	4.0b.809d
<b>EUT C</b>	Power supply	Deutronic ETC70H-12	H2833900111	---	---

\*) EUT short description is used to simplify the identification of the EUT in this test report.

### 6.3 EUT: Variants and description (acc. customers information)

EUT A:

N4000+ SerienNr.:0000E7

SYSTEM: 0200\_0720\_0201\_0000E7

Firmware: 4.0b.809d

Datenverkehr:

- 1x host\_ETH
- 1x SFP+ mit 1Gbit/s
- 1x USB-A USB-Stick gesteckt, kein Datenverkehr
- 1x GB-ETH mit 90Mbit/s
- 1x 100Base-T1 mit 90Mbit/s
- 1x 1000Base-T1 mit 90Mbit/s
- 10x CAN mit je 500kBit/s
- 13x LIN mit je 19,2 kBit/s
- 2x FlexRay mit je 730kBit/s
- 6x Analog jeweils 5kBit/s
- 4x Digital\_In (Eingangssignal jeweils ca. 170Bit/s)
- 2x Digital\_Out; Output high, jeweils mit 1A Laststrom
- 1x eSATA, hier werden die Daten der Schnittstellen geloggt.

EUT B:

N4000+ SerienNr.:0000E6

SYSTEM: 0200\_0720\_0201\_0000E6

Firmware: 4.0b.809d

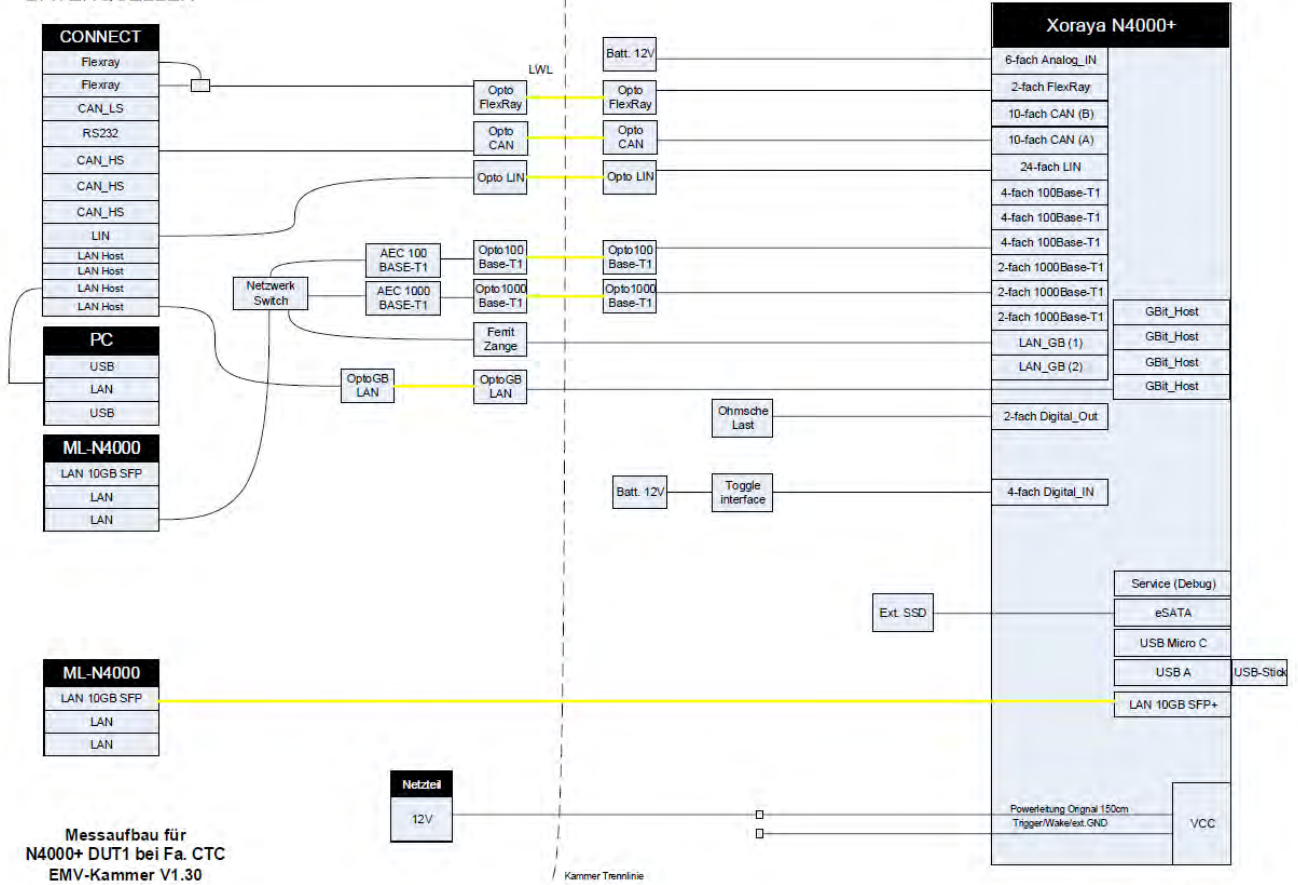
Datenverkehr:

- 1x host\_ETH
- 1x SFP+ mit 1Gbit/s
- 1x USB-A USB-Stick gesteckt, kein Datenverkehr
- 1x GB-ETH mit 90Mbit/s
- 1x 100Base-T1 mit 90Mbit/s
- 1x 1000Base-T1 mit 90Mbit/s
- 10x CAN mit je 500kBit/s
- 13x LIN mit je 19,2 kBit/s
- 6x Analog mit je 5kBit/s
- 8x RS232 mit je 115,2 kBit/s
- 2x Digital\_Out; Output high, jeweils mit 1A Laststrom
- 1x eSATA, hier werden die Daten der Schnittstellen geloggt.

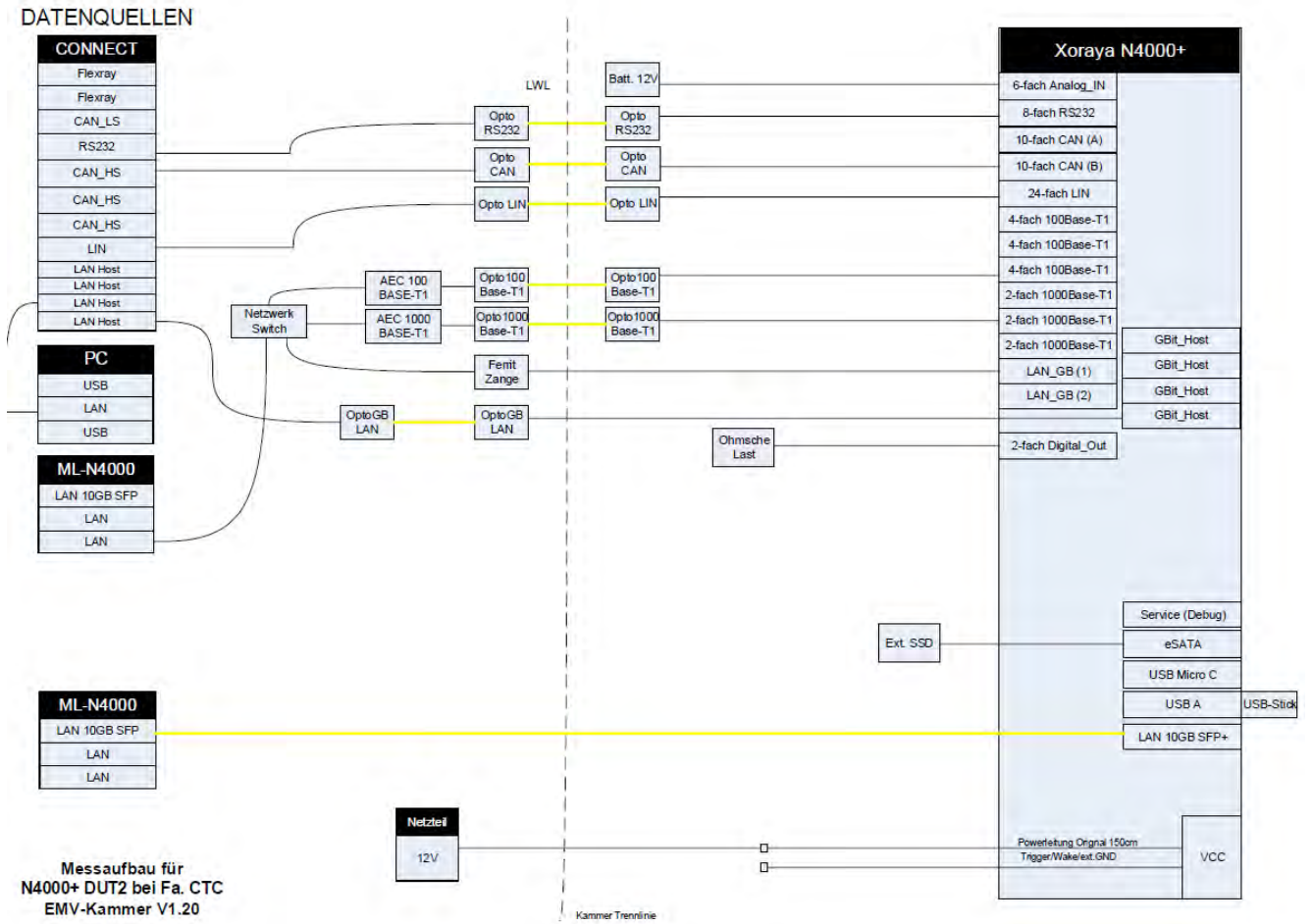
## 6.4 Set-ups

Set 1:

### DATENQUELLEN



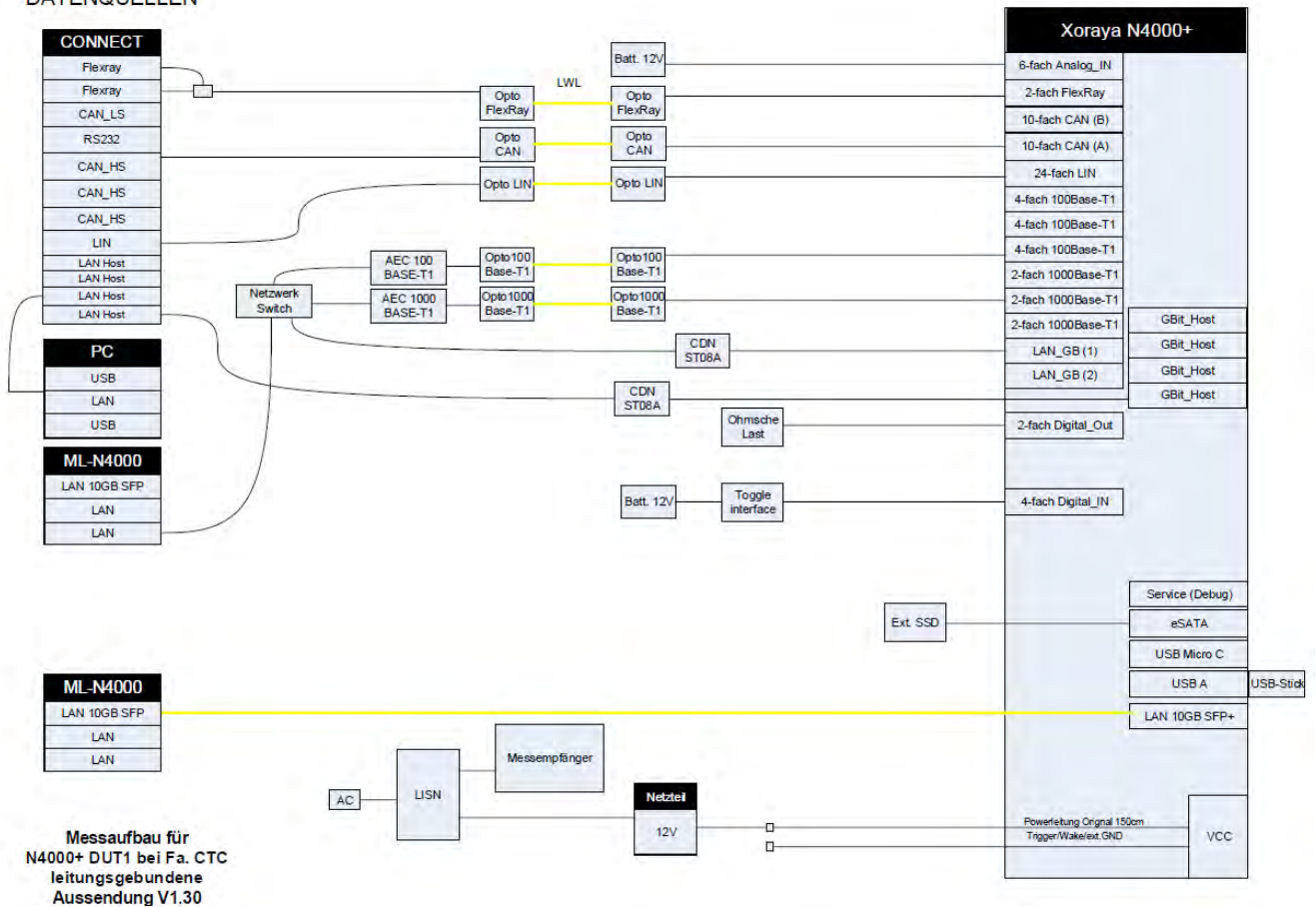
Set 2:





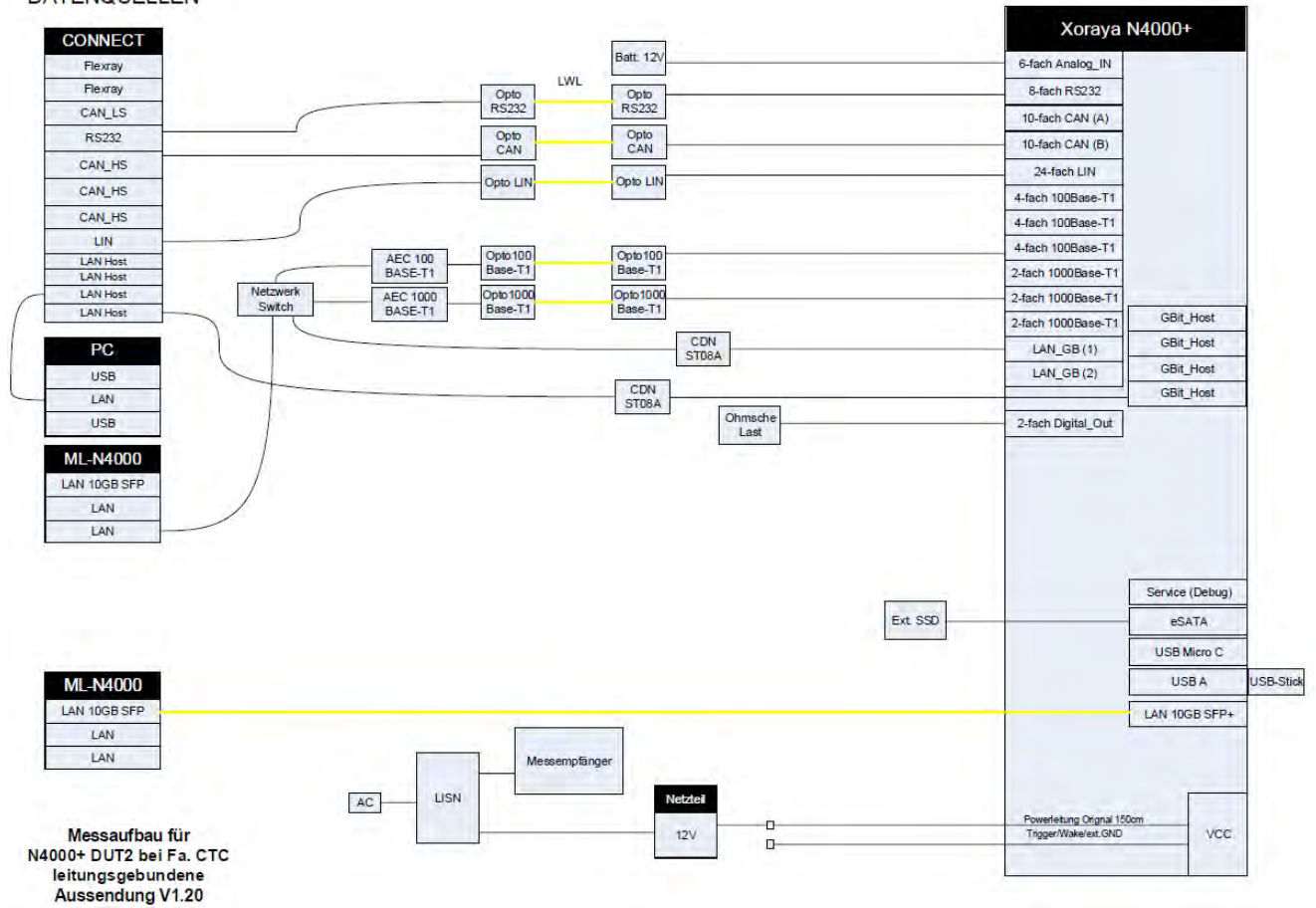
Set 3:

DATENQUELLEN



Set 4:

DATENQUELLEN



6.5 EUT Operating Modes

EUT operating mode no.*)	Description of operating modes	Additional information
op. 1	Data logging	---

\*) EUT operating mode no. is used to simplify the test report.

## 7 Summary of Test Results

- No deviations from the technical specifications were ascertained  
 There were deviations from the technical specifications ascertained

### 7.1 Emission

#### 7.1.1 Enclosure

EMI Phenomenon	Frequency range	Basic standard	Result
Radiated Interference Field Strength	30 - 1000 MHz	FCC Part 15 Class A	passed
Radiated Interference Field Strength	> 1 GHz	FCC Part 15 Class A	passed

#### 7.1.2 AC Mains Power Input/Output Ports

EMI Phenomenon	Frequency range	Basic standard	Result
Conducted interference voltage	0,15– 30 MHz	FCC Part 15 Class A	passed

#### Remarks:

NA1	Not tested because not required by used standard
NA2	Test not applicable because port does not exists
NA3	Test not applicable because port only for services
NA4	Test not applicable because port lengths not longer than 3m
NA5	Not tested because not required by customer
NA6	Not tested because used frequency < 108 MHz
NA7	Not tested because the device is for vehicular use

## 7.2 Measurement and Test Set-up

Note: The test configuration is in accordance with the requirements given in the standards in point 3

## 7.3 Measurement uncertainty

The uncertainty of the measurement equipment fulfils CISPR 16 and the related European and national standards.

The semi anechoic chamber fulfils the requirements of CISPR 16-1 (ANSI C63.4) for a test volume of 4m Ø.

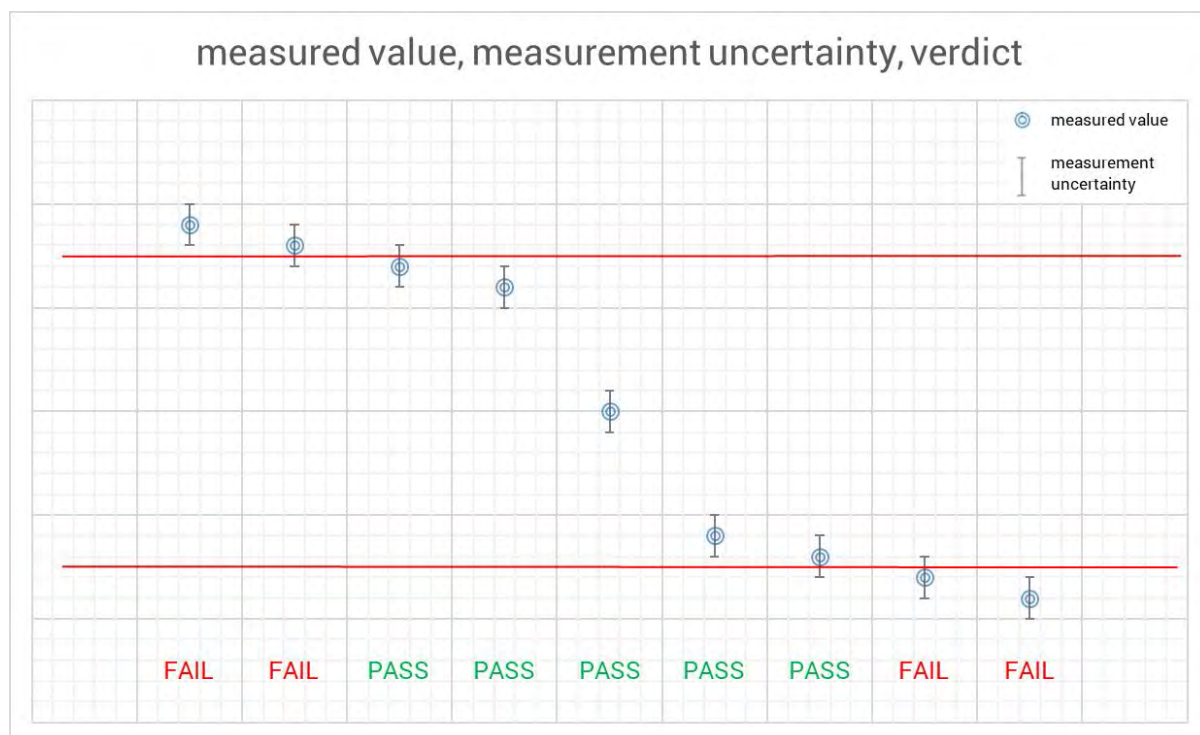
The table below shows the measurement uncertainties for each measurement method. The expended uncertainty (k=2 or 95%) was calculated with worst case values.

Measurement Method	Frequency area Impulse duration time	Description	Expanded uncertainty (k=2 or 95%)
Radiated Emission FCC part 15 B, ANSI C63.4	30 MHz – 18 GHz	- / -	± 4.28 dB
Conducted Emission FCC part 15 B, ANSI C63.4	9 kHz – 30 MHz	- / -	± 3.49 dB

## 7.4 Reporting statements of conformity – decision rule

Only the measured values related to their corresponding limits will be used to decide whether the equipment under test meets the requirements of the test standards listed in chapter 3.

The measurement uncertainty is mentioned in this test report, see chapter above, but is not taken into account - neither to the limits nor to the measurement results. Measurement results with a smaller margin to the corresponding limits than the measurement uncertainty have a potential risk of more than 5% that the decision might be wrong."



## 8 Detailed test results - Emission

### 8.1 Conducted Emission

#### 8.1.1 Instrumentation for Test (see equipment list)

G 1	G 2	F 21								
-----	-----	------	--	--	--	--	--	--	--	--

#### 8.1.2 Test Plan

<b>EUT set-up</b>	Set 3 and set 4		
<b>Operating mode</b>	<b>Port / Line</b>	<b>Limit</b>	<b>Result</b>
Op 1	AC power line	FCC part 15 B Class A	passed
Op 1	AC power line	FCC part 15 B Class A	passed

<b>Remark :</b>	Powered by external power supply (120 V / 60 Hz) Measured with Power supply Deutronic ETC70H-12
-----------------	--

#### 8.1.3 Conducted Limits (Power-Line)

Frequency- range	FCC part 15 B Class B		FCC part 15 B Class A	
	Quasi-Peak (dBµV)	Average (dBµV)	Quasi-Peak (dBµV)	Average (dBµV)
0,15 MHz – 0,5 MHz	66-56	56-46	79	66
0,5 MHz -5 MHz	56	46	73	60
5 MHz -30 MHz	60	50	73	60

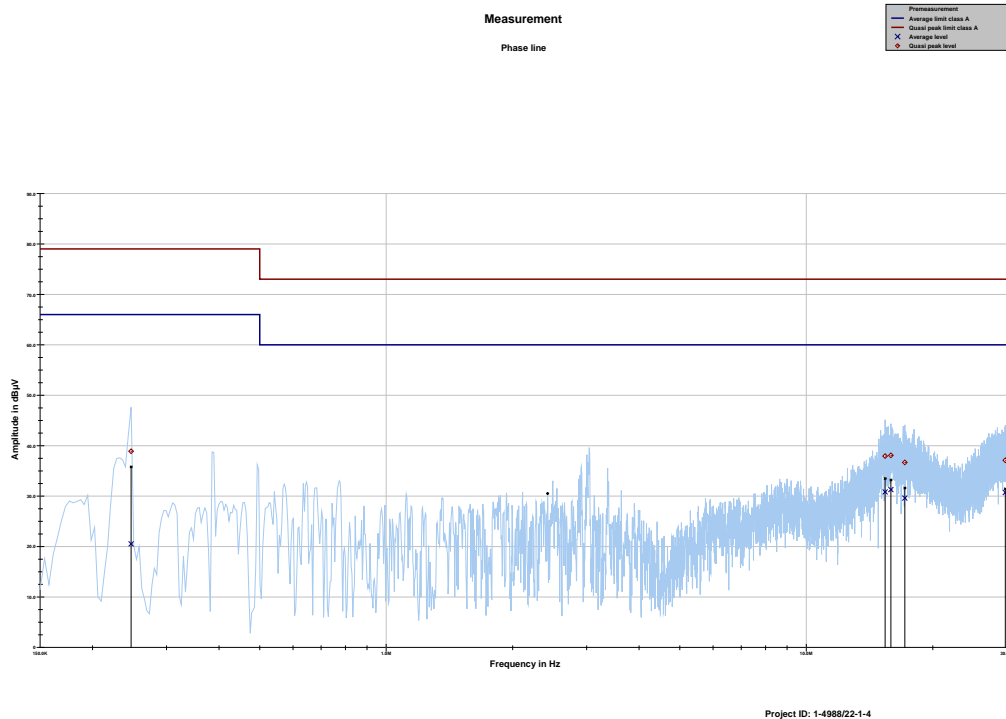
#### 8.1.4 Calibration Information

Device	Serial number	Internal Number	Calibration valid until	Calibration interval
ESR3	102981	300006318	05 / 2023	12 month
VISN ESH 3-Z5	893045/004	300000584	12 / 2023	24 month

Remarks: All emission components and the shielded room were checked weekly  
Cable loss: 0.6 to 2.4 dB (150kHz to 30 MHz)

### 8.1.5 Test Results of Main

Set 3



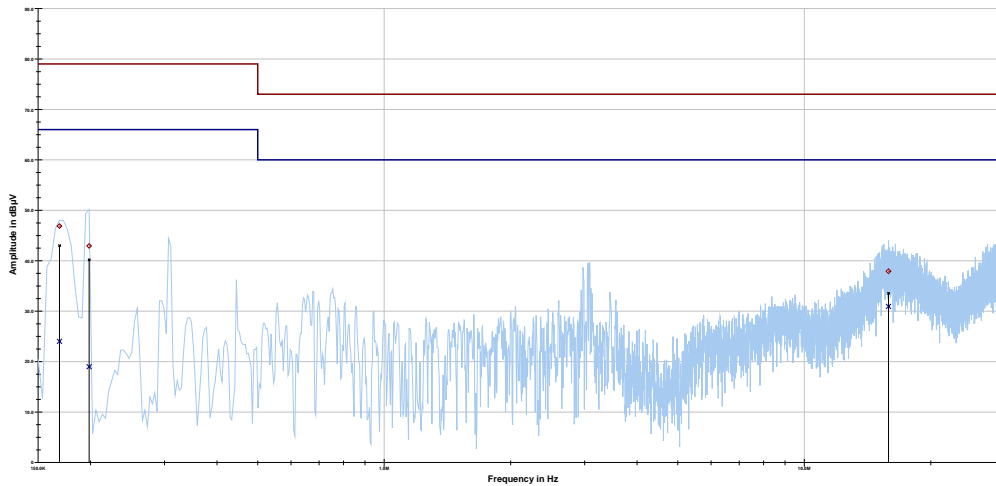
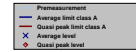
Phase line tbl  
Project ID: 1-4988/22-1-4

Frequency	Quasi peak level	Margin quasi peak	Limit QP	Average level	Margin average	Limit AV
MHz	dBµV	dB	dBµV	dBµV	dB	dBµV
0.247012	38.89	40.11	79.000	20.52	45.48	66.000
15.407081	37.93	35.07	73.000	30.82	29.18	60.000
15.895875	38.08	34.92	73.000	31.28	28.72	60.000
17.157038	36.68	36.32	73.000	29.61	30.39	60.000
29.768663	37.10	35.90	73.000	30.72	29.28	60.000

Project ID - 1-4988/22-1-4  
EUT - N4000 + Version 1  
Operating mode - test mode acc. customer

Measurement

Neutral line



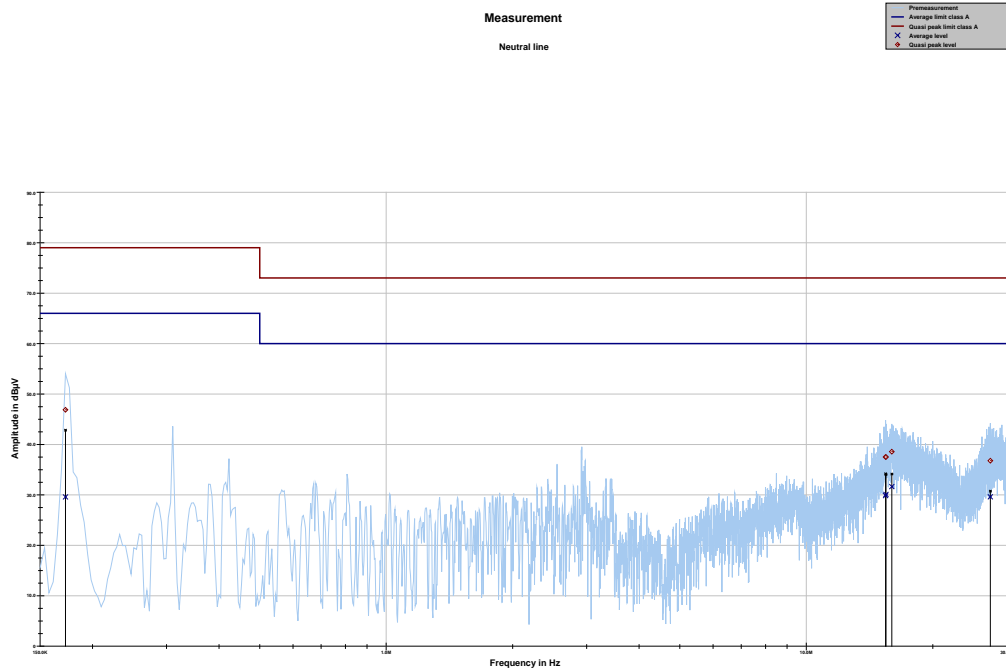
Project ID: 1-4988/22-1-4

Neutral line tbl  
Project ID: 1-4988/22-1-4

Frequency	Quasi peak level	Margin quasi peak	Limit QP	Average level	Margin Average	Limit AV
MHz	dBµV	dB	dBµV	dBµV	dB	dBµV
0.168656	46.87	32.13	79.000	24.01	41.99	66.000
0.198506	42.93	36.07	79.000	18.99	47.01	66.000
15.866025	37.91	35.09	73.000	30.94	29.06	60.000
29.093306	37.11	35.89	73.000	30.64	29.36	60.000
29.522400	37.38	35.62	73.000	30.90	29.10	60.000
29.839556	37.45	35.55	73.000	31.06	28.94	60.000

Project ID - 1-4988/22-1-4  
EUT - N4000 + Version 1  
Operating mode - test mode acc. customer

Set 4



Project ID: 1-4988/22-1-4

Neutral line tbl  
Project ID: 1-4988/22-1-4

Frequency	Quasi peak level	Margin quasi peak	Limit QP	Average level	Margin Average	Limit AV
MHz	dBµV	dB	dBµV	dBµV	dB	dBµV
0.172387	46.86	32.14	79.000	29.59	36.41	66.000
15.440663	37.50	35.50	73.000	29.85	30.15	60.000
15.470512	37.51	35.49	73.000	30.09	29.91	60.000
15.981694	38.56	34.44	73.000	31.63	28.37	60.000
27.417975	36.76	36.24	73.000	29.61	30.39	60.000

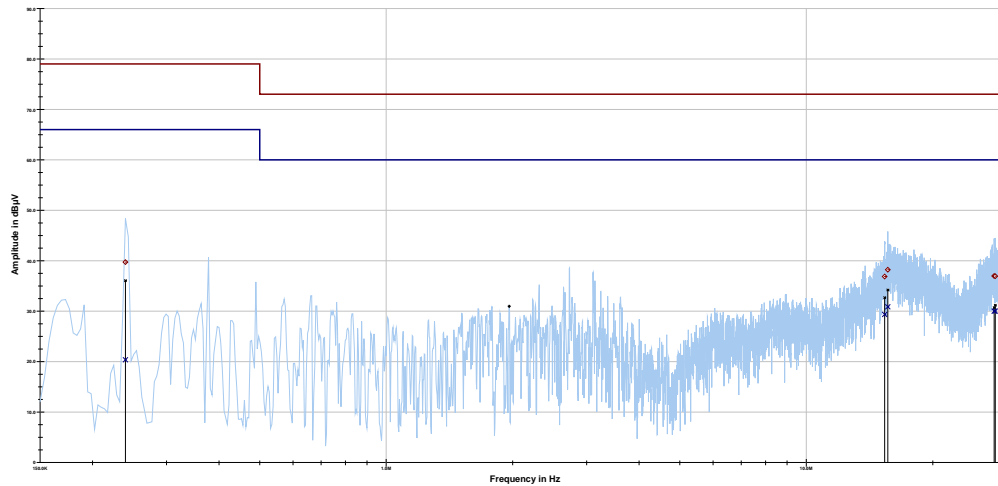
Project ID - 1-4988/22-1-4  
EUT - N 4000 + Version 2  
Operating mode - test mode acc. customer



Measurement

Phase line

Prämessurement	
—	Average limit class A
—	Quasi peak limit class A
X	Average level
o	Quasi peak level



Project ID: 1-4988/22-1-4

Phase line tbl  
Project ID: 1-4988/22-1-4

Frequency	Quasi peak level	Margin quasi peak	Limit QP	Average level	Margin average	Limit AV
MHz	dBµV	dB	dBµV	dBµV	dB	dBµV
0.239550	39.71	39.29	79.000	20.36	45.64	66.000
15.366037	36.85	36.15	73.000	29.35	30.65	60.000
15.630956	38.21	34.79	73.000	30.85	29.15	60.000
28.000050	36.96	36.04	73.000	29.98	30.02	60.000
28.175419	36.93	36.07	73.000	30.01	29.99	60.000

Project ID - 1-4988/22-1-4  
EUT - N 4000 + Version 2  
Operating mode - test mode acc. customer

## 8.1.6 Signal strength calculation

### Calculation formula:

$$SS = UR + CF + VC$$

### List of abbreviations:

SS	▶	signal strength
UR	▶	voltage at the receiver
CF	▶	loss of the cable and filter (passband filter 130 kHz – 30 MHz)
VC	▶	correction factor of the ISN (ESH3-Z5)

### List with correction factors:

Frequency [MHz]	CF [dB]	VC [dB]
0,150	9,80	1,42
1,000	9,80	0,41
5,000	9,90	0,32
10,000	9,90	0,23
15,000	10,00	0,39
20,000	10,00	1,19
25,000	10,20	1,55
30,000	10,30	1,31

### Example calculation:

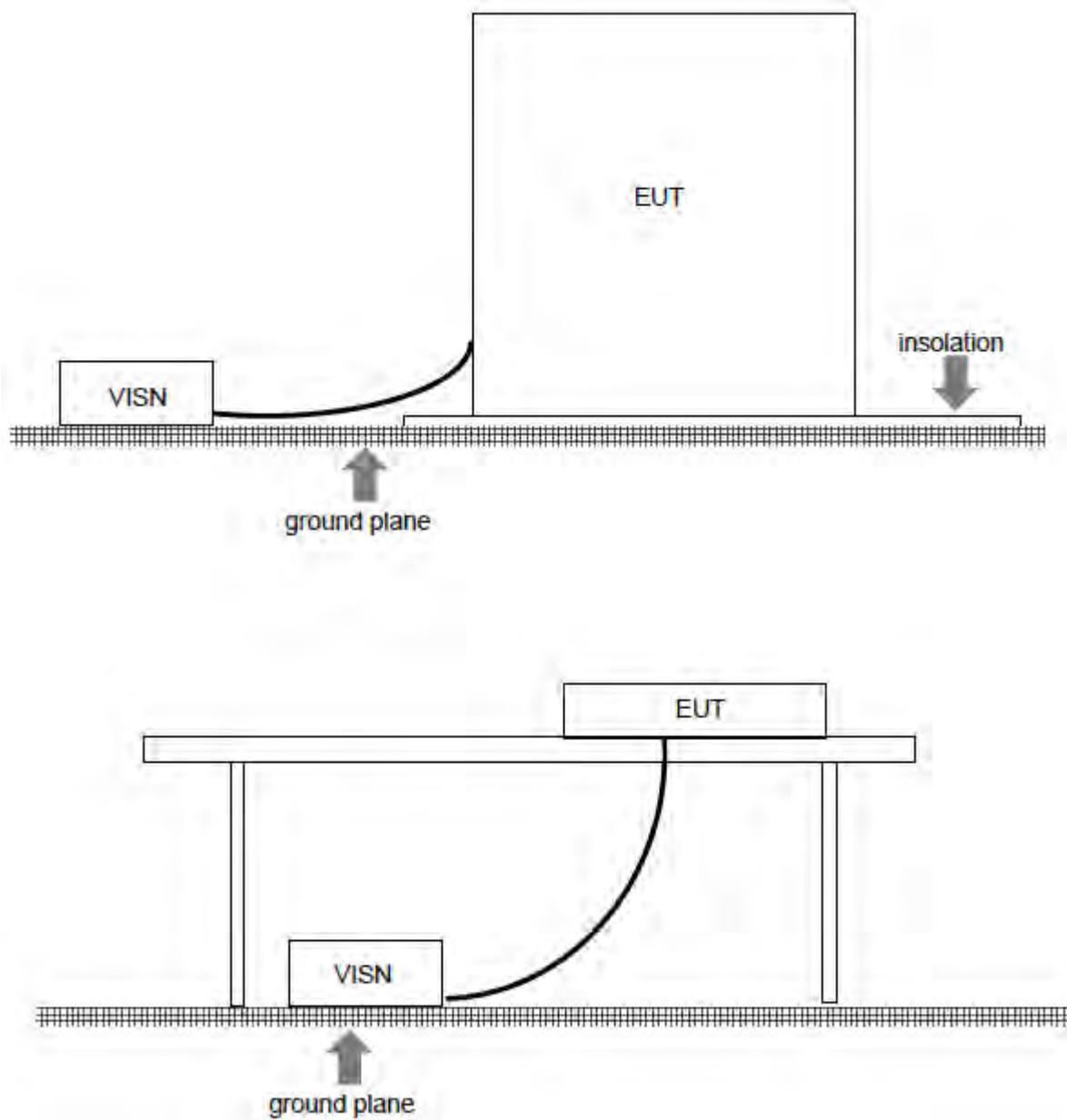
For example at 10,000 000 MHz the measured Voltage (UR) is 37,62 dB $\mu$ V, the loss of the cable and filter (CF) is 9,90 dB and the correction factor of the ISN (VC) is 0,23 dB the final result will be calculated:  
 $SS [dB\mu V] = 37,62 [dB\mu V] + 9,90 [dB] + 0,23 [dB] = \underline{47,75 [dB\mu V]} (244,06 \mu V)$

## 8.1.7 Version of test software

Software Version: TILE 7.3.0.15

### 8.1.8 Test Set-up

According to EMC basic standard **ANSI C 63.4**



## 8.2 Electromagnetic Radiated Emissions (Distance 10 m)

### 8.2.1 Instrumentation for Test (see equipment list)

F 1	F 2	F 4b	F 5	F 6	F 7	F 8	F 28				
-----	-----	------	-----	-----	-----	-----	------	--	--	--	--

### 8.2.2 Test Plan

EUT set-up	set 1 and set 2		
Operating mode	Application	Limit	Result
op 1	Enclosure	FCC part 15 B Class A	passed
op 1	Enclosure	FCC part 15 B Class A	passed

<b>Remarks:</b>	Powered by external power supply (12 V)
-----------------	---

### 8.2.3 Radiated Limits

Frequency- range	FCC part 15 B Class B @ 10 m	FCC part 15 B Class A @ 10 m
30 MHz – 88 MHz	30 dB $\mu$ V/m	39,1 dB $\mu$ V/m
88 MHz – 216 MHz	33,5 dB $\mu$ V/m	43,5 dB $\mu$ V/m
216 MHz – 960 MHz	36 dB $\mu$ V/m	46,4 dB $\mu$ V/m
above 960 MHz	44 dB $\mu$ V/m	49,5 dB $\mu$ V/m
	* This values are recalculated from the class B limits at 3 m antenna distance in §15.109 (g 2) of the FCC rules	

### 8.2.4 Calibration Information

Device	Serial number	Internal Number	Calibration valid until	Calibration interval
ESR 3	1316.3003K03-102587-ct	300005771	05 / 2023	12 month
Trilog Antenna	9163-1029	300005379	08 / 2023	24 month

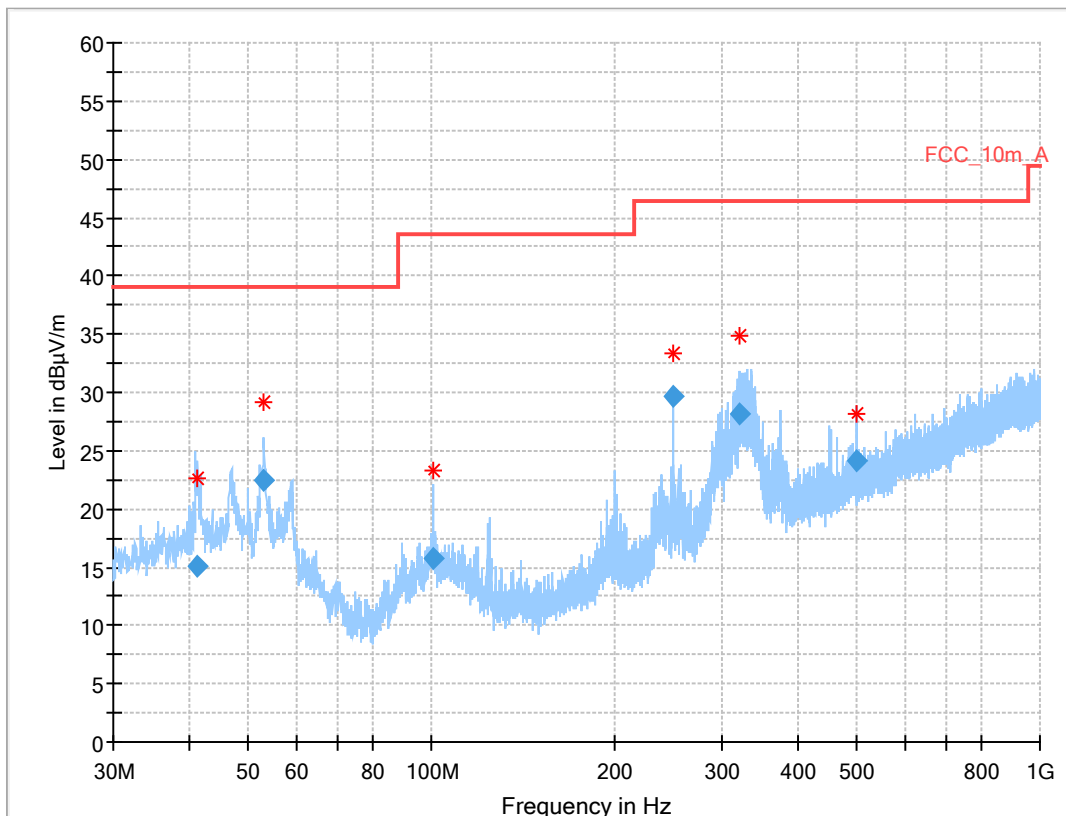
<b>Remarks:</b>	System check of all relevant devices and the chamber (weekly)
-----------------	---

## 8.2.5 Test Results

Set 1

### Common Information

EUT: N4000 +  
 Serial number: 0000E7  
 Test description: FCC part 15 class A  
 Operating condition: test mode acc customer  
 Operator name: Kraus  
 Comment: DC 12V



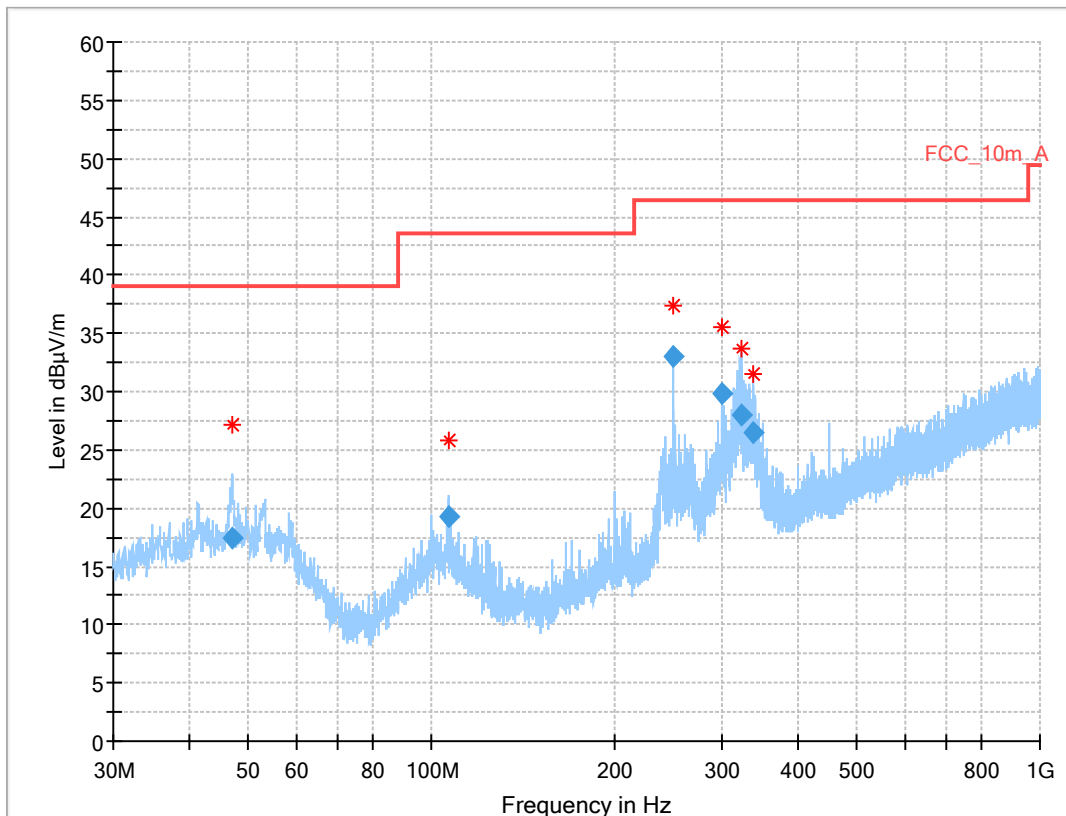
### Final Result

Frequency (MHz)	QuasiPeak (dBµV/m)	Limit (dBµV/m)	Margin (dB)	Meas. Time (ms)	Bandwidth (kHz)	Height (cm)	Pol	Azimuth (deg)	Corr. (dB/m)
41.151	15.09	39.1	24.0	1000	120.0	140.0	V	60	15
53.073	22.41	39.1	16.7	1000	120.0	114.0	V	165	15
101.024	15.83	43.5	27.7	1000	120.0	400.0	V	150	14
250.009	29.68	46.4	16.7	1000	120.0	104.0	V	-23	14
321.953	28.10	46.4	18.3	1000	120.0	132.0	V	6	16
499.993	24.09	46.4	22.3	1000	120.0	100.0	V	15	20

Set 2

## Common Information

EUT: N4000 + (Config 2)  
 Serial number: 0000E6  
 Test description: FCC part 15 class A  
 Operating condition: test mode acc customer  
 Operator name: Kraus  
 Comment: DC 12V



## Final Result

Frequency (MHz)	QuasiPeak (dBµV/m)	Limit (dBµV/m)	Margin (dB)	Meas. Time (ms)	Bandwidth (kHz)	Height (cm)	Pol	Azimuth (deg)	Corr. (dB/m)
46.936	17.35	39.1	21.8	1000	120.0	103.0	V	200	16
106.680	19.19	43.5	24.3	1000	120.0	112.0	V	280	14
250.015	33.06	46.4	13.3	1000	120.0	200.0	V	-22	14
299.994	29.76	46.4	16.6	1000	120.0	400.0	H	239	15
323.361	27.96	46.4	18.4	1000	120.0	264.0	H	220	16
338.145	26.42	46.4	20.0	1000	120.0	100.0	V	-2	17

## 8.2.6 Hardware Set-up

### Hardware Setup: EMI radiated\VULP\_10\_m - [EMI radiated]

Subrange 1

Frequency Range:	30 MHz - 2 GHz
Receiver:	ESR 3 [ESR 3] @ GPIB0 (ADR 20), SN 1316.3003K03/102587, FW 3.66
Signal Path:	without Notch FW 1.0
Antenna:	VULB 9163 SN 9163-1029, FW ---
Antenna Tower:	Tower [EMCO 2090 Antenna Tower] @ GPIB0 (ADR 8), FW REV 3.12
Turntable:	Turntable [EMCO Turntable] @ GPIB0 (ADR 9), FW REV 3.12
	Software version: EMC32 V10.59.0

## 8.2.7 Sequence of testing

### Setup

- The equipment is set up to simulate normal operation mode as described in the user manual or defined by the manufacturer.
- If the EUT is a tabletop system, a nonconducting table with 0.8 m height is used, which is placed on the ground plane.
- If the EUT is a floor standing device, it is placed on the ground plane with insulation between both.
- Auxiliary equipment and cables are positioned to simulate normal operation conditions as described in ANSI C 63.4.
- The AC power port of the EUT (if available) is connected to a power outlet below the turntable.
- Measurement distance is 10 m or 3 m (see ANSI C 63.4) – see test details.
- EUT is set into operation.

### Premeasurement

- The turntable rotates from 0° to 315° using 45° steps.
- The antenna is polarized vertical and horizontal.
- The antenna height changes from 1 m to 3 m.
- At each turntable position, antenna polarization and height the analyzer sweeps three times in peak to find the maximum of all emissions.

### Final measurement

- The final measurement is performed for at least six highest peaks according to the requirements of the ANSI C63.4.
- Based on antenna and turntable positions at which the peak values are measured the software maximize the peaks by changing turntable position  $\pm 45^\circ$  and antenna height between 1 and 4 m.
- The final measurement is done with quasi-peak detector (as described in ANSI C 63.4).
- Final levels, frequency, measuring time, bandwidth, antenna height, antenna polarization, turntable angle, correction factor, margin to the limit and limit are recorded. A plot with the graph of the premeasurement with marked maximum final results and the limit is stored.



## 8.2.8 Signal strength calculation

### Calculation formula:

$$SS = U_R + CL + AF$$

### List of abbreviations:

SS	▶	signal strength
$U_R$	▶	voltage at the receiver
CL	▶	loss of the cable
AF	▶	antenna factor

### List with correction factors:

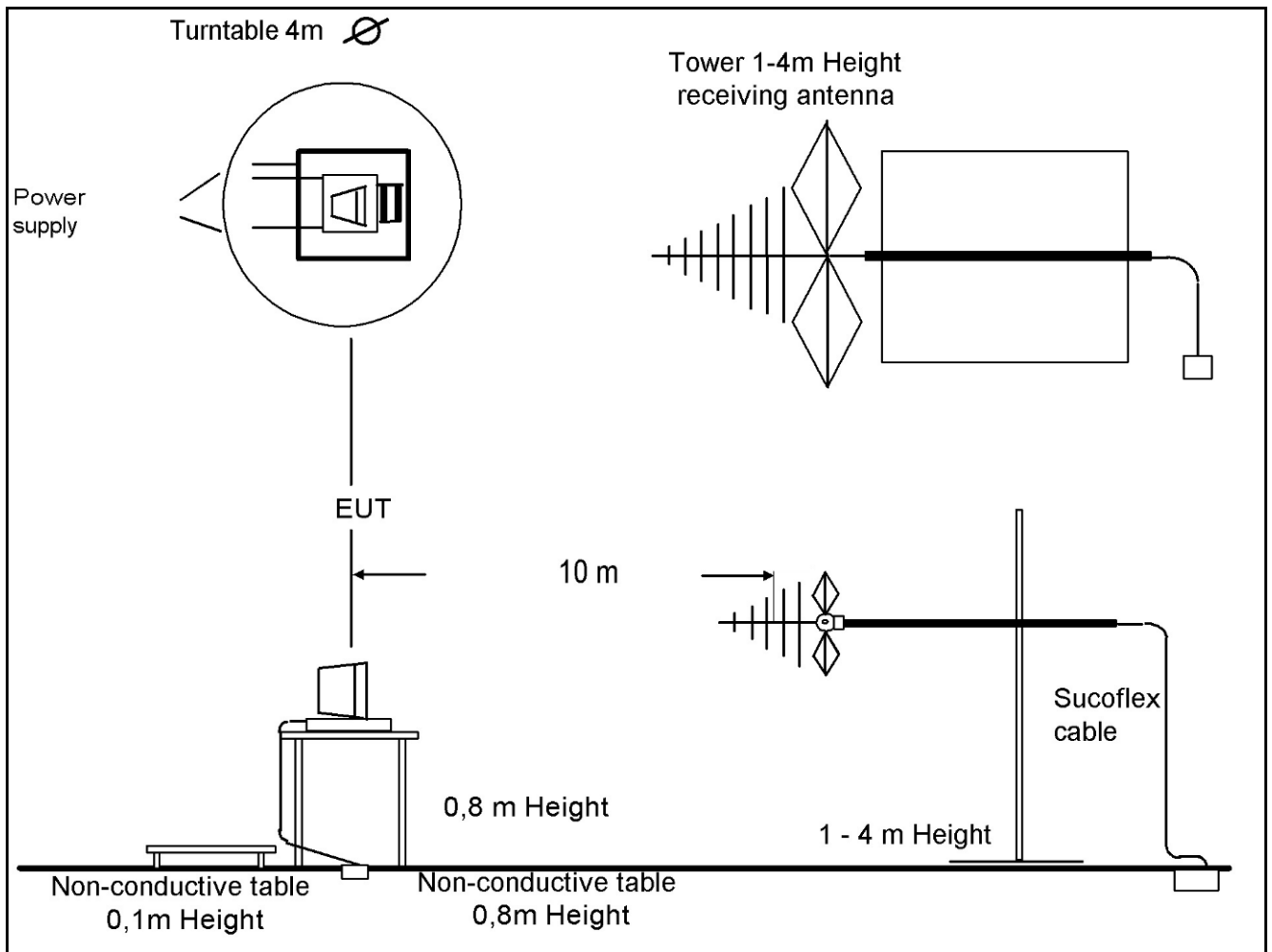
Frequency [MHz]	CL [dB]	AF [1/m]
30,000	0,20	12,30
100,000	0,60	11,30
200,000	1,10	10,60
300,000	1,30	13,20
400,000	1,60	15,30
500,000	1,90	16,80
600,000	2,00	18,80
700,000	2,20	20,30
800,000	2,30	21,50
900,000	2,40	22,80
1000,000	2,50	23,30

### Example calculation:

For example at 500,000 000 MHz the measured Voltage ( $U_R$ ) is 12,35 dB $\mu$ V, the loss of the cable (CL) is 1,90 dB and the antenna factor (AF) is 16,80 dB ( $m^{-1}$ ) the final result will be calculated:

$$SS \text{ [dB}\mu\text{V/m]} = 12,35 \text{ [dB}\mu\text{V]} + 1,90 \text{ [dB]} + 16,80 \text{ [dB (m}^{-1}\text{)]} = \underline{31,05 \text{ [dB}\mu\text{V/m] (35,69 } \mu\text{V/m)}}$$

### 8.2.9 Test Set-up



### 8.3 Electromagnetic Radiated Emissions (Distance 5 m)

#### 8.3.1 Instrumentation for Test (see equipment list)

F 1	F 6	F 28	F 30	F 32	F 33						
-----	-----	------	------	------	------	--	--	--	--	--	--

#### 8.3.2 Test Plan

<b>EUT set-up</b>	set 1 and set 2		
<b>Operating mode</b>	<b>Application</b>	<b>Limit</b>	<b>Result</b>
op 1	Enclosure	FCC part 15 B Class A	passed

<b>Remarks:</b>	The measured values are recalculated from 5m to 3m distance Powered by external power supply (12V))
-----------------	--

#### 8.3.3 Radiated Limits

Frequency- range	47CFR15: (FCC part 15 B) Class B @ 3 m	47CFR15: (FCC part 15 B) Class A @ 3 m*
above 1GHz	54 dBµV/m	59,5 dBµV/m
		* This values are recalculated from the class A limits at 10 m antenna distance in §15.109 (g 2) of the FCC rules.

#### 8.3.4 Calibration Information

Device	Serial number	Internal Number	Calibration valid until	Calibration interval
<b>FSU 26</b>	200809	300003874	12/2022	12 month
<b>Horn Antenna</b>	9107-3697	300001605	03/2023	24 month

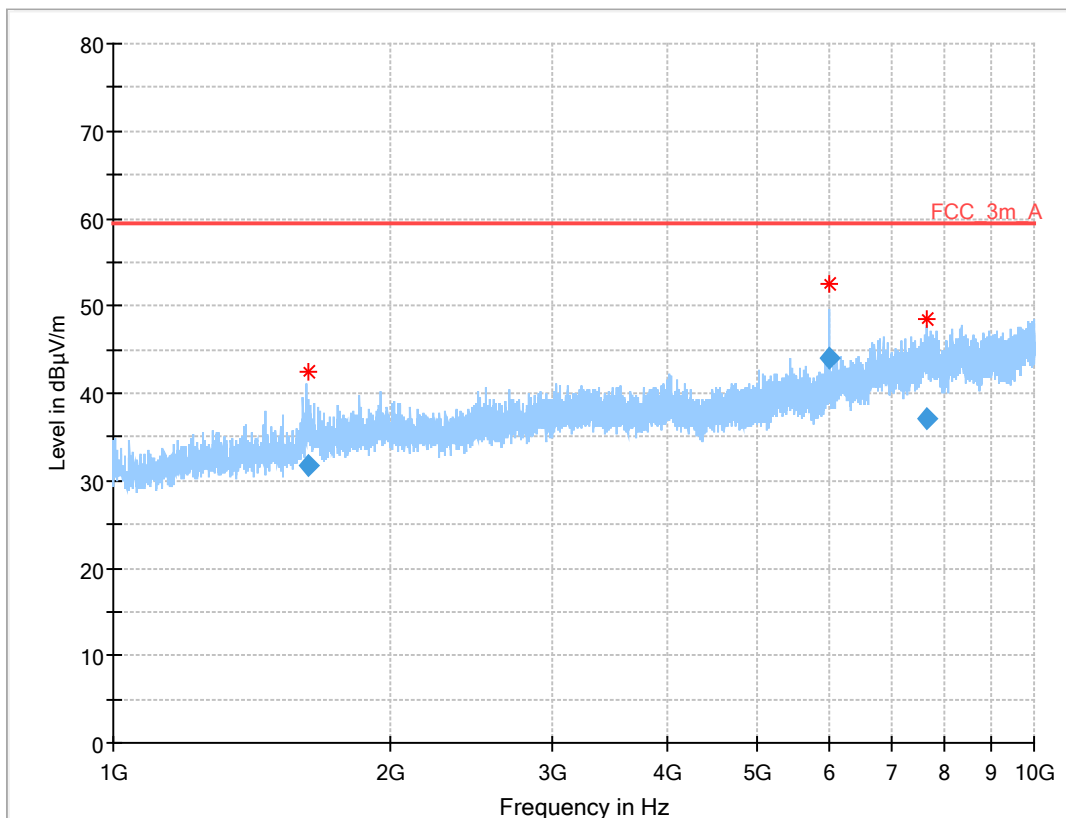
<b>Remarks:</b>	System check of all relevant devices and the chamber (weekly)
-----------------	---

### 8.3.5 Test Results

Set 1

#### Common Information

EUT:	N4000 +
Serial number:	0000E7
Test description:	FCC part 15 class A
Operating condition:	test mode acc customer
Operator name:	Kraus
Comment:	DC 12V



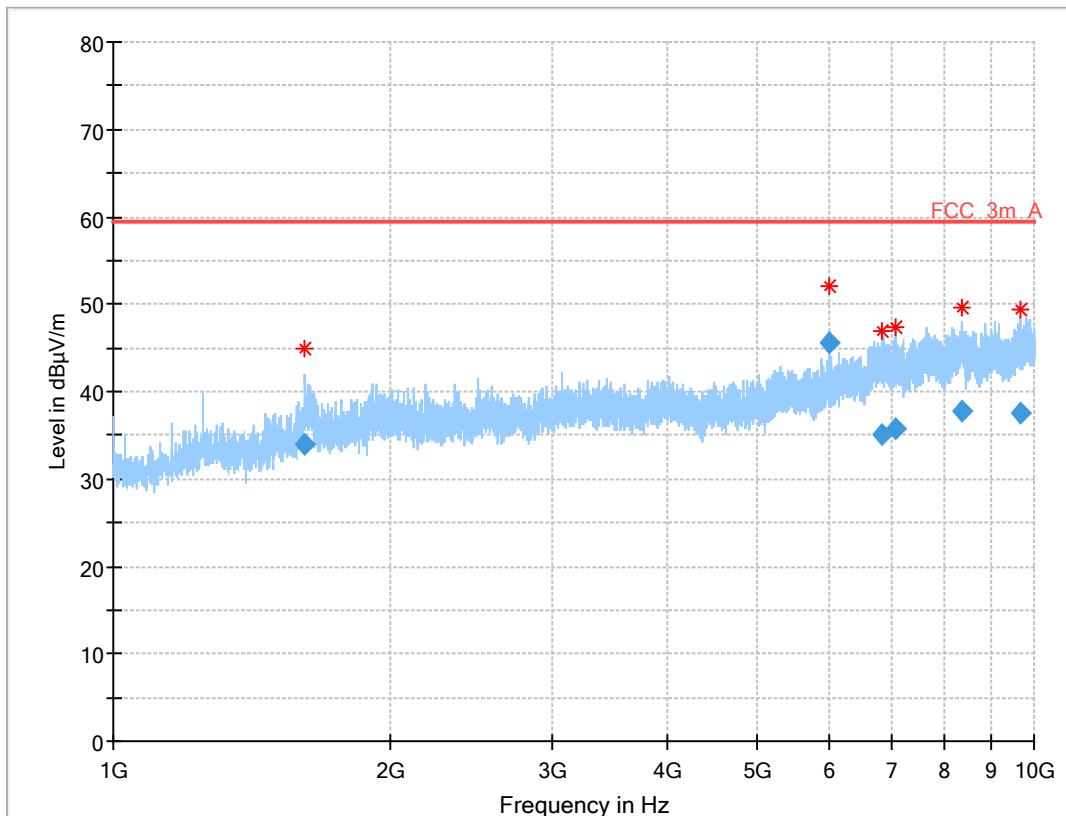
#### Final Result

Frequency (MHz)	Average (dBµV/m)	Limit (dBµV/m)	Margin (dB)	Meas. Time (ms)	Bandwidth (kHz)	Pol	Azimuth (deg)	Corr. (dB/m)	Comment
1624.864	31.63	59.5	27.9	1000	1000.0	V	262	-7	
6000.039	44.12	59.5	15.4	1000	1000.0	V	292	1	
7641.136	37.14	59.5	22.4	1000	1000.0	H	180	5	

Set 2:

### Common Information

EUT: N4000 + (Config 2)  
 Serial number: 0000E6  
 Test description: FCC part 15 class A  
 Operating condition: test mode acc customer  
 Operator name: Kraus  
 Comment: DC 12V



### Final Result

Frequency (MHz)	Average (dBµV/m)	Limit (dBµV/m)	Margin (dB)	Meas. Time (ms)	Bandwidth (kHz)	Pol	Azimuth (deg)	Corr. (dB/m)	Comment
1614.603	33.93	59.5	25.6	1000	1000.0	V	127	-8	
5999.826	45.60	59.5	13.9	1000	1000.0	V	243	1	
6829.898	35.08	59.5	24.4	1000	1000.0	H	198	4	
7077.856	35.78	59.5	23.7	1000	1000.0	V	4	4	
8365.521	37.76	59.5	21.7	1000	1000.0	H	116	6	
9657.313	37.51	59.5	22.0	1000	1000.0	V	185	8	

### 8.3.6 Hardware Set-up

#### Hardware Setup: EMI radiated\BBHA\_5m - [EMI radiated]

Subrange 1

Frequency Range: 1 GHz - 18 GHz

Receiver: FSU 26 [FSU 26]  
@ GPIB0 (ADR 17), SN 200809/026, FW 4.71

Signal Path: 1\_6\_EN  
FW 1.0

Antenna: Horn Antenna EMCO 3115

Turntable: Turntable [EMCO Turntable]  
@ GPIB0 (ADR 9), FW REV 3.12

Software version: EMC32 V10.59.0

### 8.3.7 Sequence of testing

#### Setup

- The Equipment was setup to simulate a typical usage like described in the user manual / or described by manufacturer.
- If the EUT is a tabletop system, a nonconducting table with 0,8 m height is used, which is placed on the ground plane.
- If the EUT is a floor standing device, it is placed on the ground plane with insulation between both.
- Auxiliary equipment and cables were positioned to simulate normal operation conditions as described in ANSI C 63.4.
- The AC power port of the EUT (if available) is connected to a power outlet below the turntable.
- The measurement distance is: (see ANSI C 63.4)  
< 18 GHz = 5 m  
The EUT was set into operation.

#### Premeasurement

- The turntable rotates continuous from 0° to 360°
- The antenna is polarized vertical and horizontal.
- In accordance to the antenna beam and the size of the EUT the antenna height changes in 30 cm steps, start at 1 meter. If it is not possible to tilt the emissions will be checked with a manually tilted antenna from top side.
- The analyzer scans quickly to find the maximum emissions of the EUT

#### Final measurement

- The final measurement will be performed with minimum the six highest peaks (depends on emissions and number of measured points below 1 GHz)
- According to the maximum antenna and turntable positions of premeasurement the software maximize the peaks by changing turntable position ( $\pm 45^\circ$ ).
- The final measurement will be done with AV (Average / see ANSI C 63.4) detector
- The final levels, frequency, measuring time, bandwidth, antenna height, antenna polarization, turntable angle, correction factor, margin to the limit, and limit will be recorded. Also a plot with the graph of the premeasurement with marked maximum final measurements and the limit will be stored.

### 8.3.8 Signal strength calculation

Calculation formula:

$$SS = U_R + CL + AF + PA + DC$$

List of abbreviations:

SS	▶	signal strength
$U_R$	▶	voltage at the receiver
CL	▶	loss of the cable and gain of the preamp
AF	▶	antenna factor
DC	▶	distance correction (results measured on 5 m calculated to 3 m)

List with correction factors: column CL in table contains cable factor and preamplifier correction

Frequency [GHz]	CL [dB]	AF [dB1/m]	DC [dB]
1,000	-35,50	24,40	4,40
1,500	-35,20	25,10	4,40
2,000	-35,10	27,40	4,40
2,500	-35,00	28,50	4,40
3,000	-34,70	30,20	4,40
3,500	-34,80	31,20	4,40
4,000	-35,00	32,60	4,40
4,500	-34,90	32,50	4,40
5,000	-34,80	33,40	4,40
5,500	-34,35	34,10	4,40
6,000	-34,00	34,40	4,40
6,500	-33,50	34,50	4,40
7,000	-33,10	35,50	4,40
7,500	-33,40	36,50	4,40
8,000	-33,80	36,90	4,40
8,500	-33,75	37,20	4,40
9,000	-33,70	37,40	4,40
9,500	-33,50	37,50	4,40
10,000	-33,40	37,90	4,40
11,000	-35,90	38,30	4,40
12,000	-34,40	39,10	4,40
13,000	-37,30	39,30	4,40
14,000	-36,20	41,30	4,40
15,000	-36,90	40,10	4,40
16,000	-34,90	37,60	4,40
17,000	-35,60	40,80	4,40
18,000	-35,70	45,70	4,40

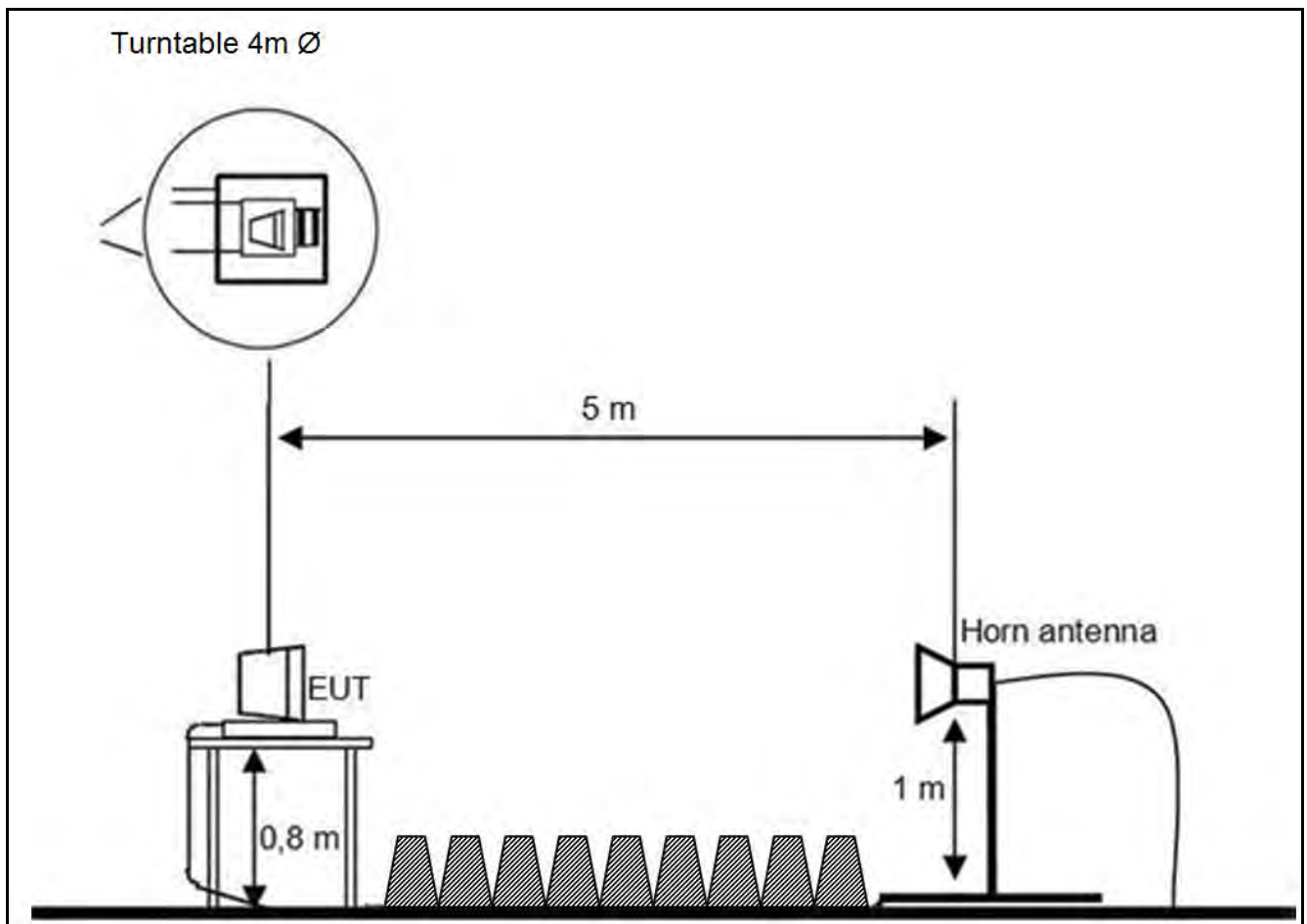
Example calculation:

For example at 4,000 000 000 GHz the measured Voltage ( $U_R$ ) is 46,13 dB $\mu$ V, the loss of the cable (CL) is -35,00 dB, the antenna factor (AF) is 32,60 dB(m-1) and the distance correction (DC) is 4,40 dB the final result will be calculated:

$$SS \text{ [dB}\mu\text{V/m]} = 46,13 \text{ [dB}\mu\text{V]} + (-35,00) \text{ [dB]} + 32,60 \text{ [dB(m-1)]} + 4,4 \text{ [dB]} = 48,13 \text{ [dB}\mu\text{V/m]} \text{ (202,53 } \mu\text{V/m)}$$



### 8.3.9 Test Set-up



## 9 Test equipment and ancillaries used for tests

To simplify the identification of the test equipment and/or ancillaries which were used, the reporting of the relevant test cases only refer to the test item number as specified in the table below.

No.	Instrument/Ancillary	Manufacturer	Type	Serial-No.	Internal identification
<b>Radiated emission in chamber F</b>					
F-1	Control Computer	F+W		2934939v001	300005258
F-2	Trilog-Antenna	Schwarzbeck	VULB 9163	9163-1029	300005379
F-4b	Switch	Netgear	GS108P	26V12A3H50336	300000368
F-5	EMI Test receiver	R&S	ESR	1316.3003K03-102587-ct	300005771
F-6	Turntable Interface-Box	EMCO / ETS-LINDGREN	Model 105637	44583	300003747
F-7	Tower/Turntable Controller	EMCO / ETS-LINDGREN	Model 2090	64672	300003746
F-8	Tower	EMCO / ETS-LINDGREN	Model 2175	64762	300003745
F-9	Ultra Notch-Filter Rejected band Ch. 62	WRCD		9	
<b>Radiated immunity in chamber F</b>					
F-10	Control Computer	F+W		2934939v001	300005258
F-11	Signal Generator	R&S	SMB 100A	1406.6000k02-113856	300005266
F-13	RF-Amplifier	Bonn	BLWA 0860-250/100D	035491	300003210
F-14	Stacked Logper Antenna	Schwarzbeck	STLP 9129	200	300006249
F-14a	Bicon-Antenna	EMCO	3109	8906-2309	300000575
F-14b	Bicon-Antenna	Schwarzbeck	Balun VHBD 9134 elements BBFA 9146	3011 0057	300005385
F-15	RF-Amplifier	ar	1000LM20	20562	-/-
F-16	Directional Coupler	ar	DC7144A	312786	300003411
F-16a	Directional coupler	emv	DC 2000	9401-1677	300000592
F-18	Power Meter	R&S	NRP2	104973	300005114
F-19	Power sensor	R&S	NRP-Z91	103332	300005114-1
F-20	Power sensor	R&S	NRP-Z91	103333	300005114-2
F-35	RF- Amplifier	Bonn	BLMA 2060-5	097392A	300003908
F-36	Stacked Microwave Log.-Per. Antenna	Schwarzbeck	STLP9149	9149-044	300003919
<b>Harmonics and flicker in front of chamber F</b>					
F-21	Flicker and Harmonics Test System	Spitzenberger & Spies	PHE4500/B I PHE4500/B II	B5983 B5984	300003314
F-21a	Power Supply	HBS Electronic	ACS-1600-PS	2002-001247-0	300006074
F-28	Power Supply	Hewlett Packard	6032 A	2920 A 04466	300000580
<b>Radiated emission in chamber F &gt; 1GHz</b>					
F-29	Horn antenna	Schwarzbeck	BBHA 9120 B	188	300003896
F-30	Amplifier	ProNova	0518C-138	005	F 024
F-31	Amplifier	Miteq	42-00502650-28-5A	1103782	300003379
F-32	Horn antenna	EMCO	3115	9107-3697	300001605
F-33	Spectrum Analyzer	R&S	FSU26	200809	300003874
F-34	Loop antenna	EMCO	6502	8905-2342	300000256

No.	Instrument/Ancillary	Manufacturer	Type	Serial-No.	Internal identification
<b>Conducted emission in chamber G</b>					
G-1	EMI Receiver	R&S	ESR3	102981	300006318
G-2	V-ISN	Rohde & Schwarz	ESH 3-Z5	892475/017	300002209
G-2a	V-ISN	Rohde & Schwarz	ESH 2-Z5	892602/024	300000587
G-3	2-Wire ISN	Schaffner	ISN T200	19075	300003422
G-4	4-Wire ISN	Schaffner	ISN T400	22325	300003423
G-5	Shielded wire ISN	Schaffner	ISN ST08	22583	300003433
G-6	Unshielded 8 wire ISN	Teseq	ISN T800	26113	300003833
G-7	Unshielded 8 wire ISN	Teseq	ISN T8-Cat. 6	26374	300003851
G-8	RF Current probe	Solar	9134-1	100254	300004163
G-9	V-ISN	Schaffner	ISN PLC-150	21579	300003318
G-10	V-ISN	Schaffner	ISN PLC-25-30	21584	300003319
G 10a	PLC Filter	TESEQ	Filter PLC	23436	300003598
G 10b	Coupling unit 75 Ohm	Fiedler	AC	----	300003272.04
<b>Conducted immunity in chamber G</b>					
G-11	Signal generator	R&S	SMG	8610647025	300000204.01
G-12	RF-Amplifier	BONN	BSA 0125-75	066502-01	300003545
G-13	Power Meter	R&S	URV 5	837723/025	300002844.01
G-14	Power Sensor	R&S	URV 5-Z2	832874/021	300002239
G-15	Directional coupler	emv	DC 2000	9401-1677	300000592
G-16	Attenuator 6dB	Alan	50HP6-100 N	121048 0348	300003148
G-17	EM-Injection Clamp	FCC	203i	232	300000626
G-18	CDN	FCC	FCC-801-M3-16	237	300000627
G-19	CDN	FCC	FCC-801-T2	78	300000629
G-20	CDN	FCC	FCC-801-AF 2	62	300000630
G-21	CDN	FCC	FCC-801-AF 4	61	300000631
G-22	CDN	FCC	FCC-801-M1	2027	300002761
G-23	CDN	TESEQ	CDN M016S	38741	300004847
G-23a	Clamp	FCC	F-130A-1	14	300003220
G-24	transformer for 50Hz Loop Antenna	EM-Test	MC2630	0200-10	300002659.01
G-25	50Hz Loop Antenna	EM-Test	MS 100	none	300002659
<b>Surge, Burst, Dips and Interruptions in chamber G</b>					
G-26	Hybrid-Generator	EM-Test	UCS 500N7	P1506148835	300005070
G-27	Motor Variac	EM-Test	MV 2616	0600-01	300002658
G-28	Capacitive Coupling Clamp	MWB	KKS 100	---	300000589
G-29a	Coupling Decoupling Network	EMC-Partner	CDN-2000-06-32	158	300004108
G-29	Coupling Decoupling Network	EMC-Partner	CDN-UTP8 ED3	1503	300004752
<b>ESD in chamber G</b>					
G-30	ESD generator	Schlöder	SESD 30000	511333	300005097
<b>Emission on bench in chamber G</b>					
G-31	Absorbing Clamp	R&S	MDS-21	832 231/006	300000527
<b>generic in chamber G</b>					
G-32	power supply	Hewlett Packard	6038A	2848A06673	300001512
<b>Conducted interference in chamber G</b>					
G 33	Arbitrary Function Generator	33521B	Keysight	MY52702534	300005023
G 34	Audio amplifier	Crown 5002VZ	MACRO-TECH 5002VZ	8001641218	300004094
G 35	Shunt	Schwarzbeck	Shunt 9570	9570118	300004107
G 36	Coupling network	EM-Test	CN 200N1	P1322118851	300004742

## 10 Observations

No observations, exceeding those reported with the single test cases, have been made.

## Annex A Photographs of the test set-up

Photo 1: radiated emission

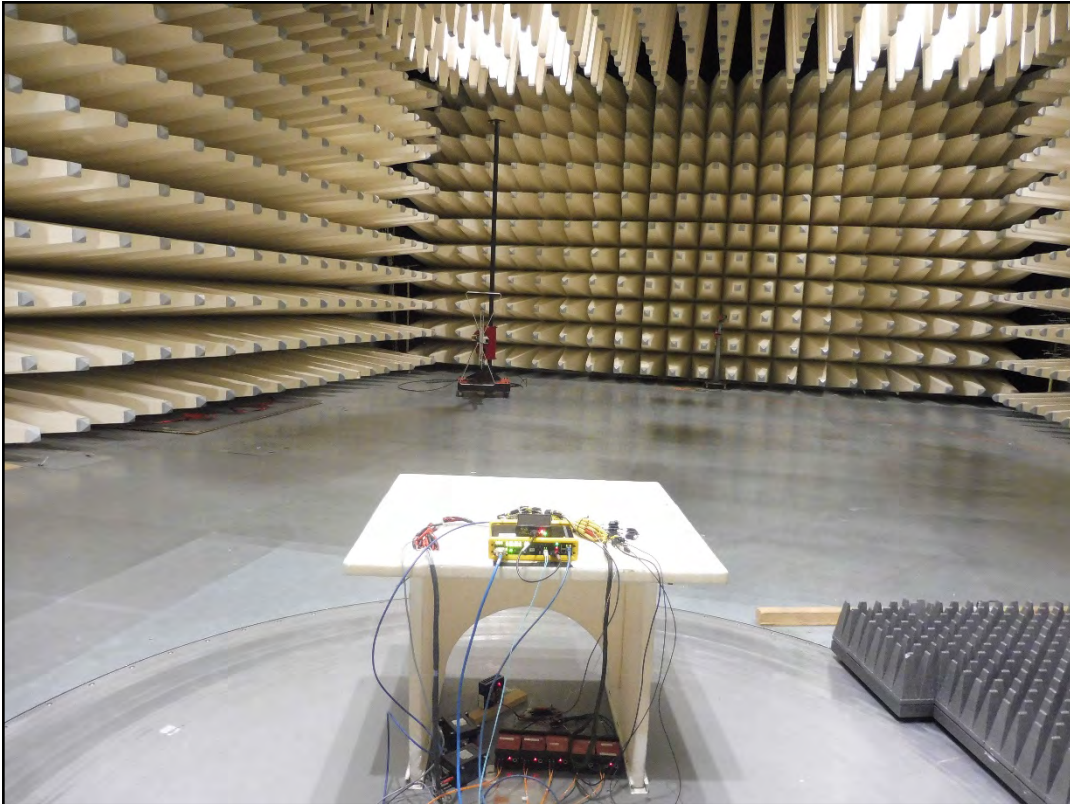


Photo 2: radiated emission

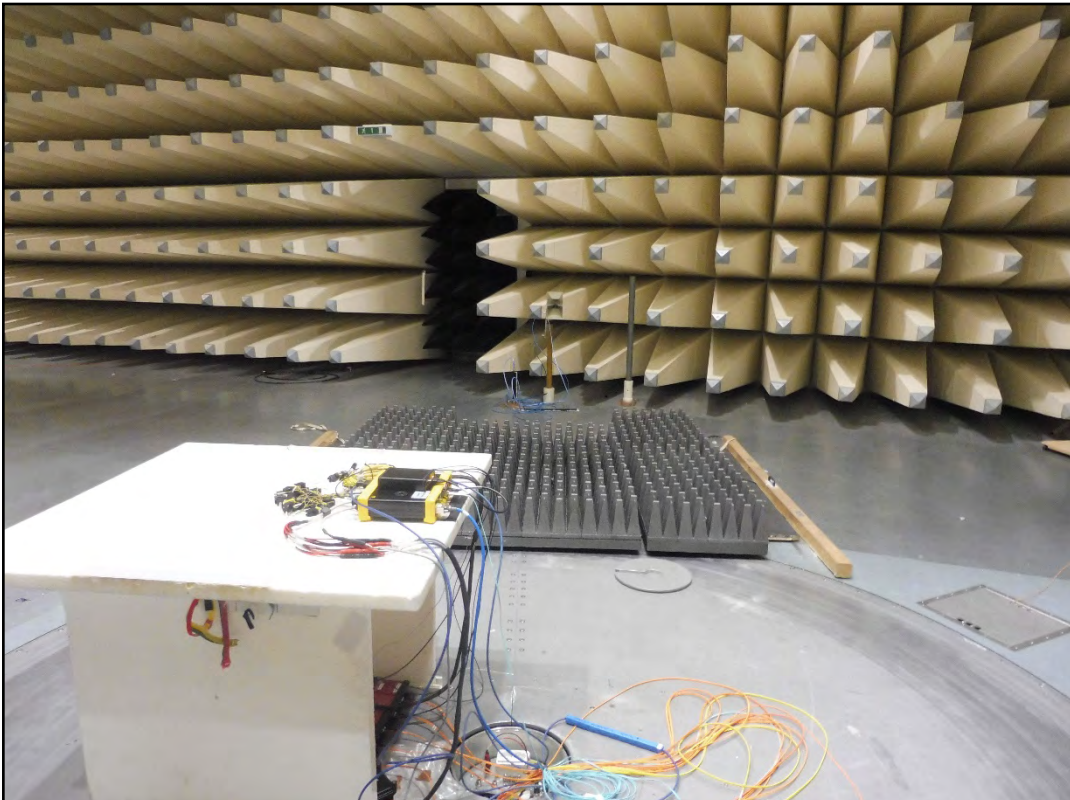




Photo 3: radiated emission

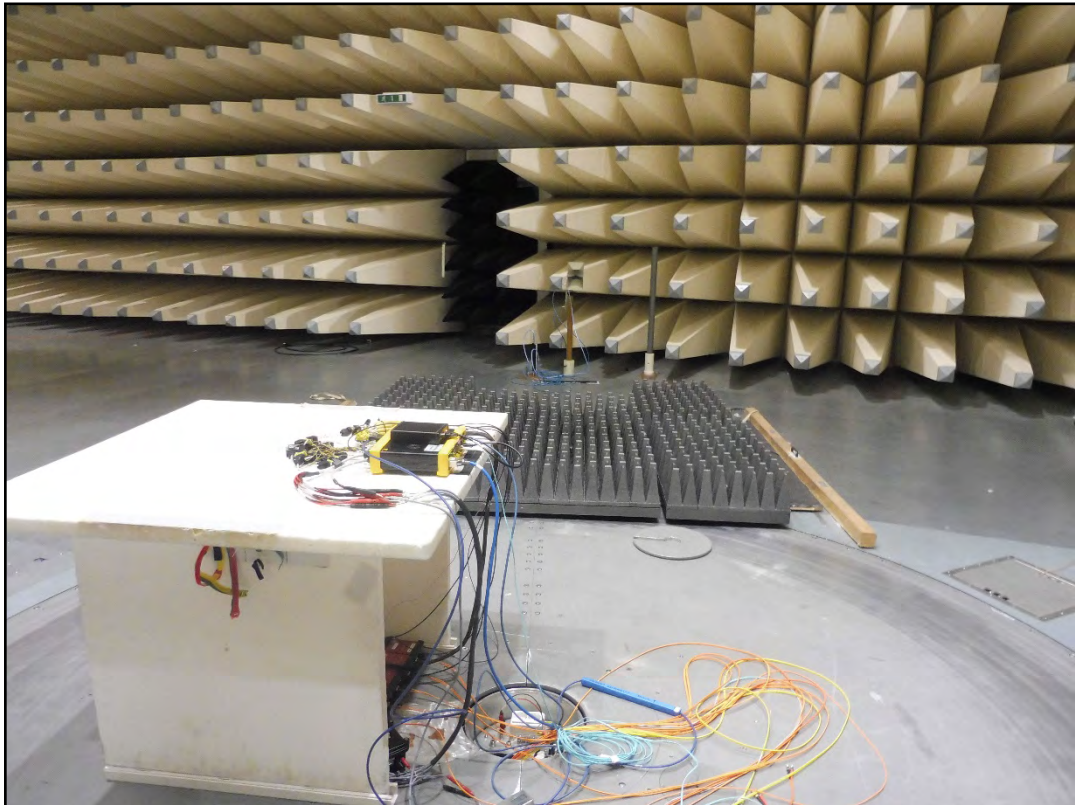


Photo 4: radiated emission

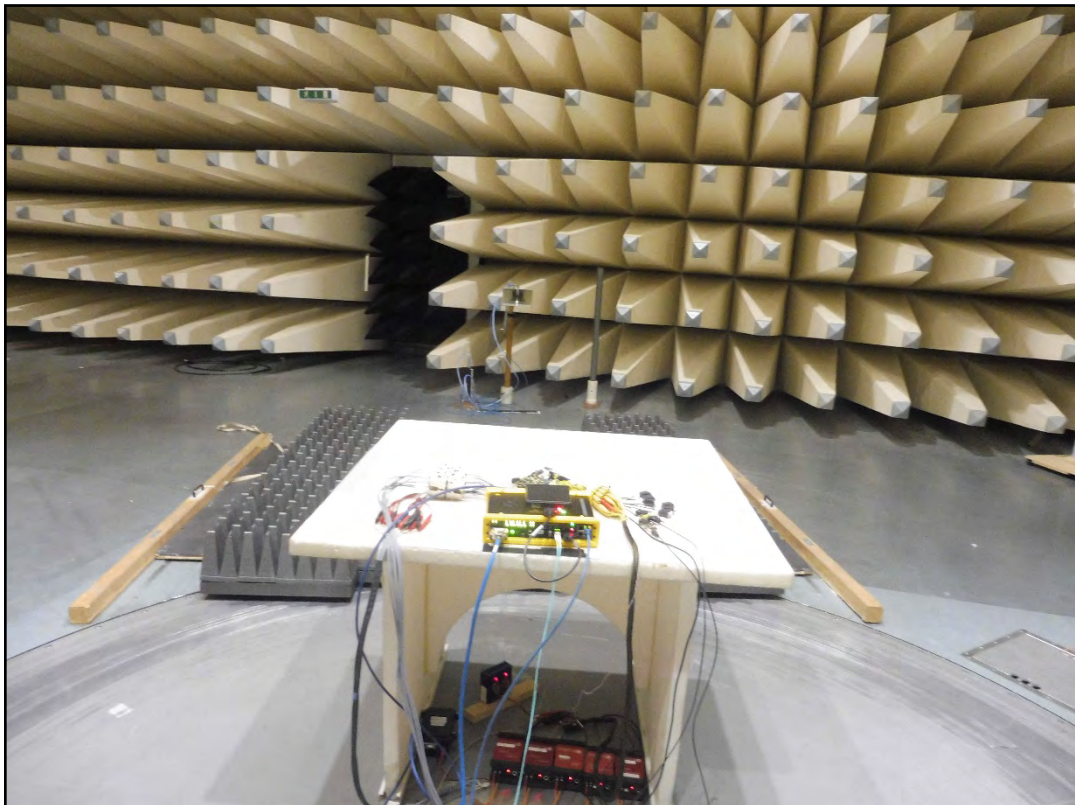




Photo 5: radiated emission

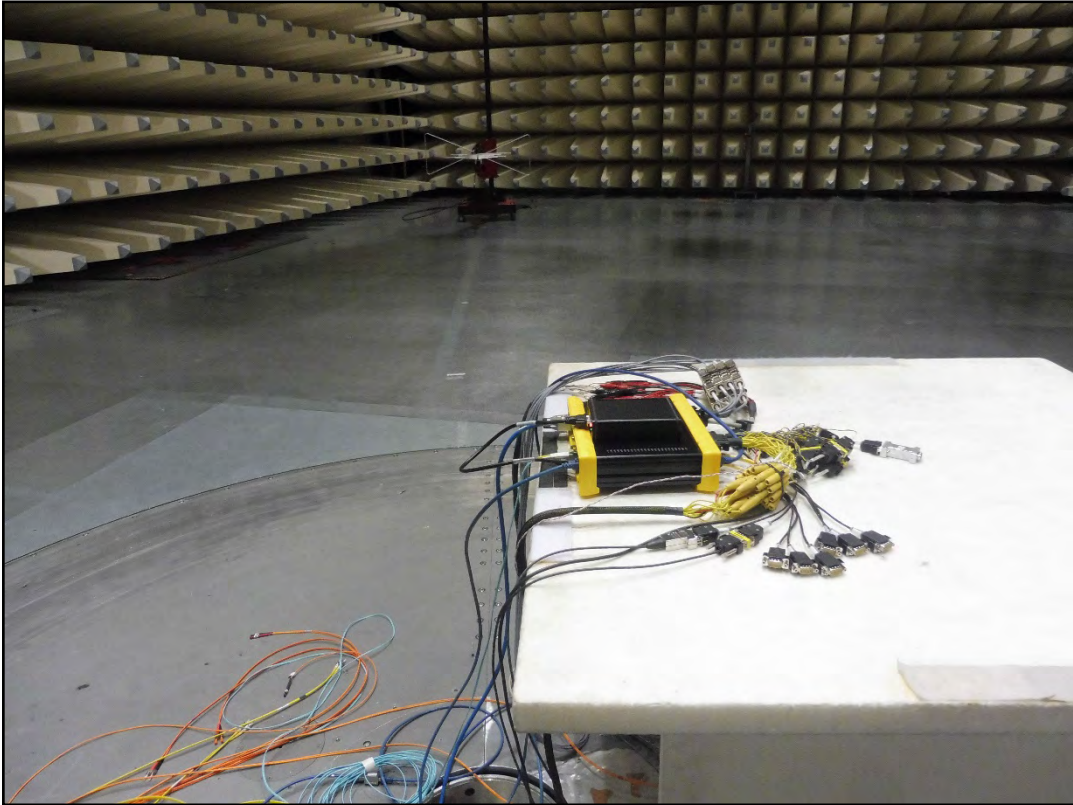


Photo 6: radiated emission

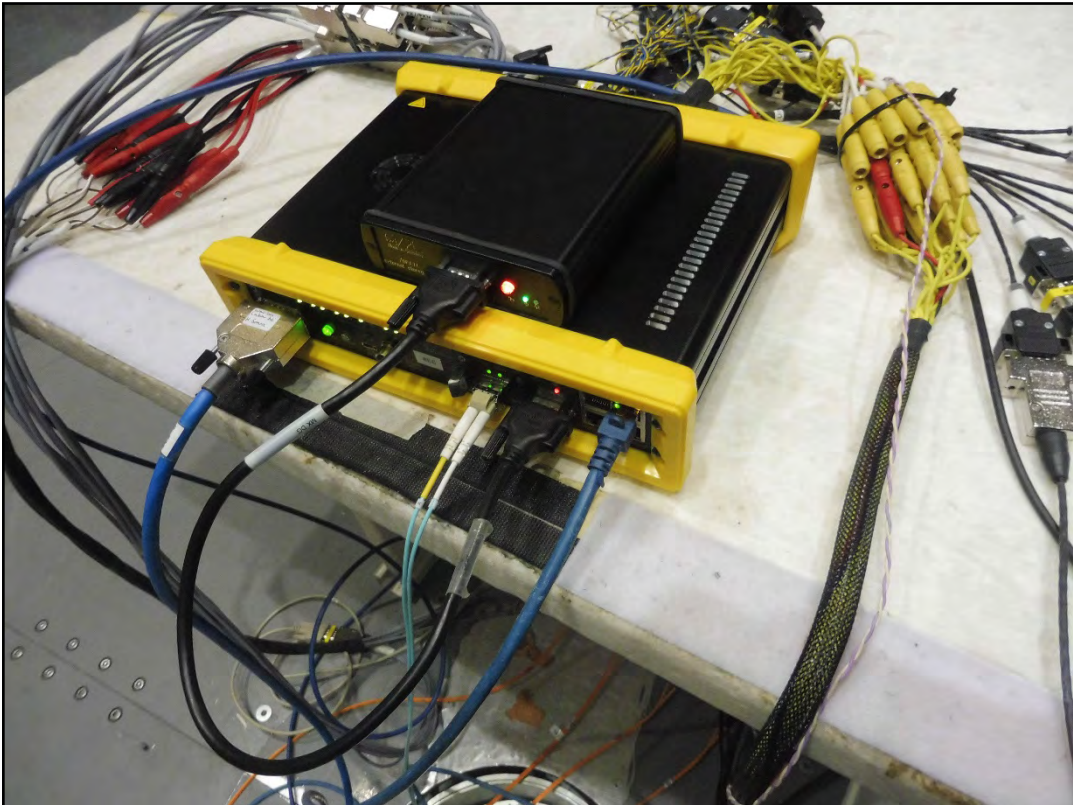


Photo 7: conducted emission

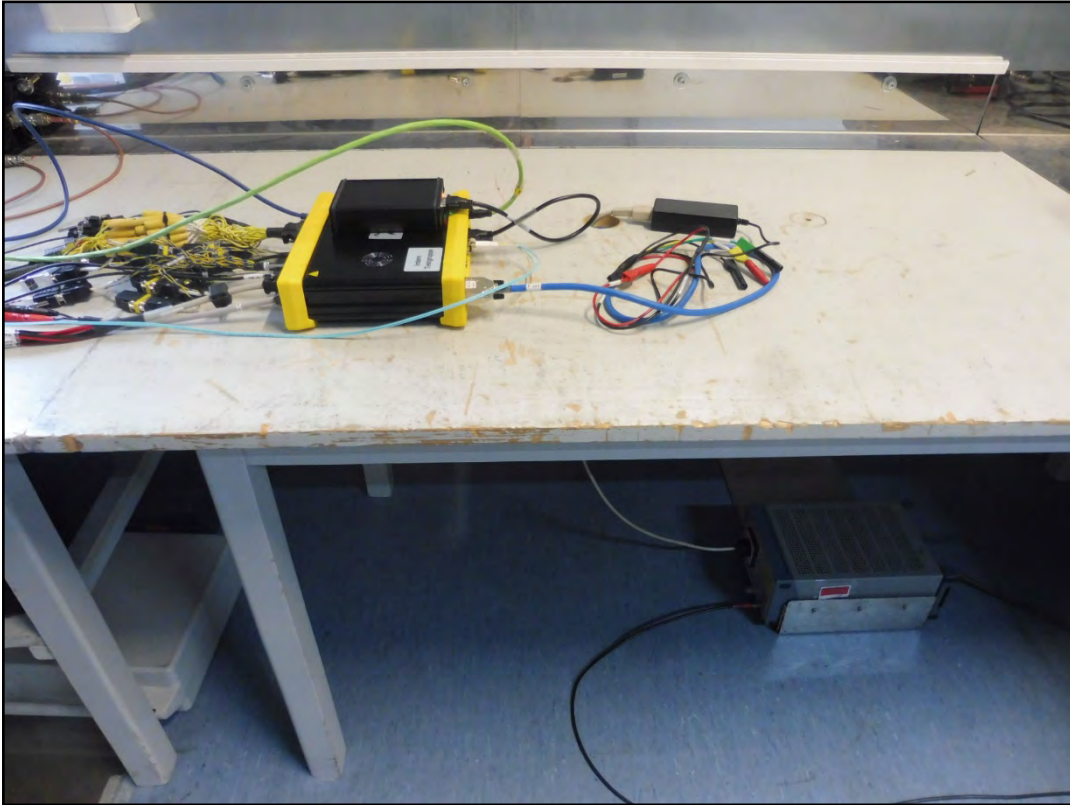


Photo 8: conducted emission

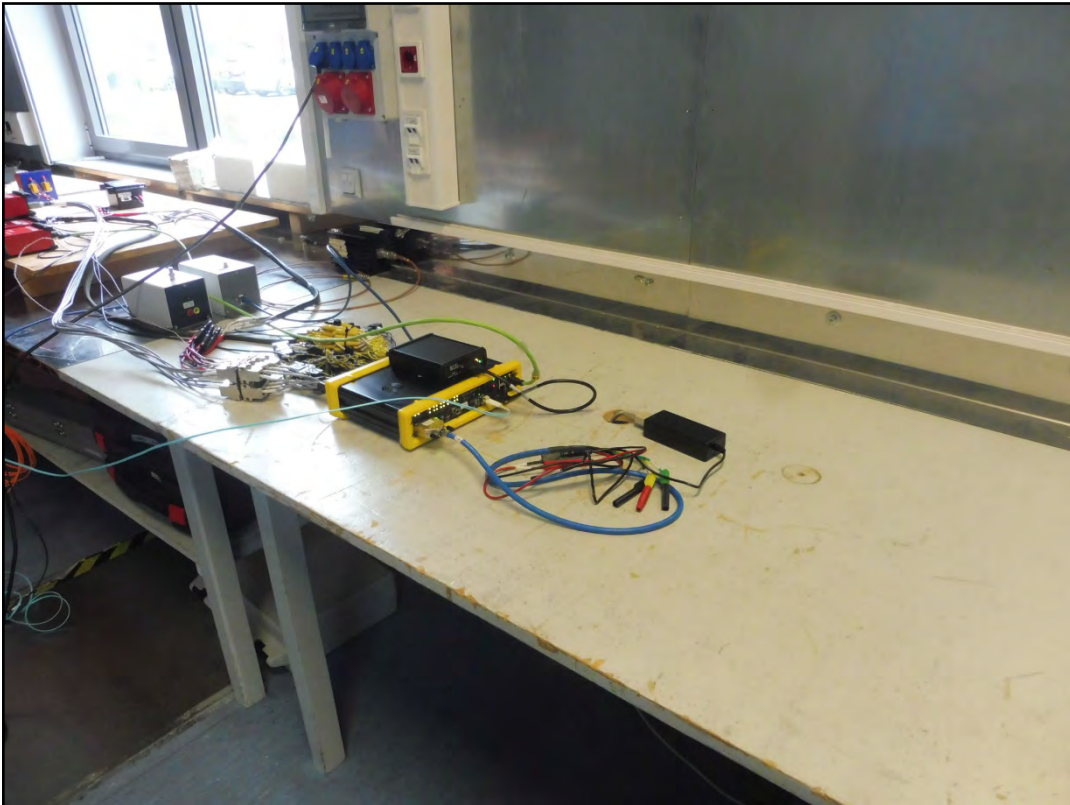




Photo 9: conducted emission

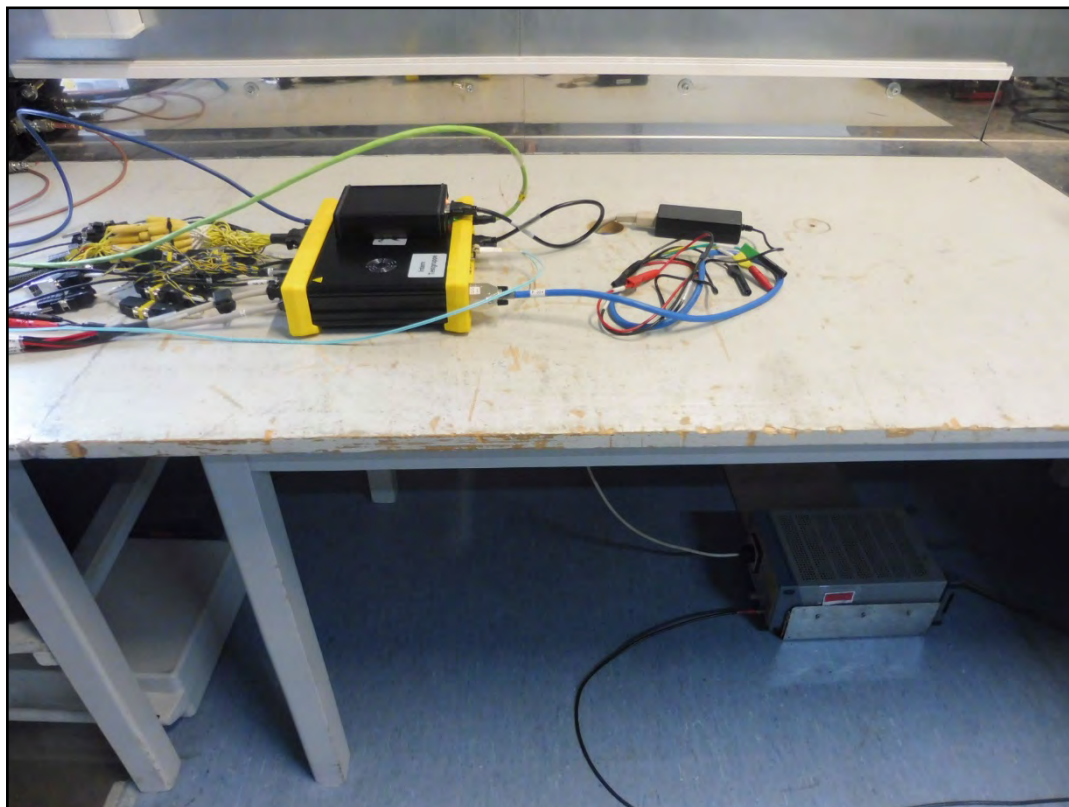
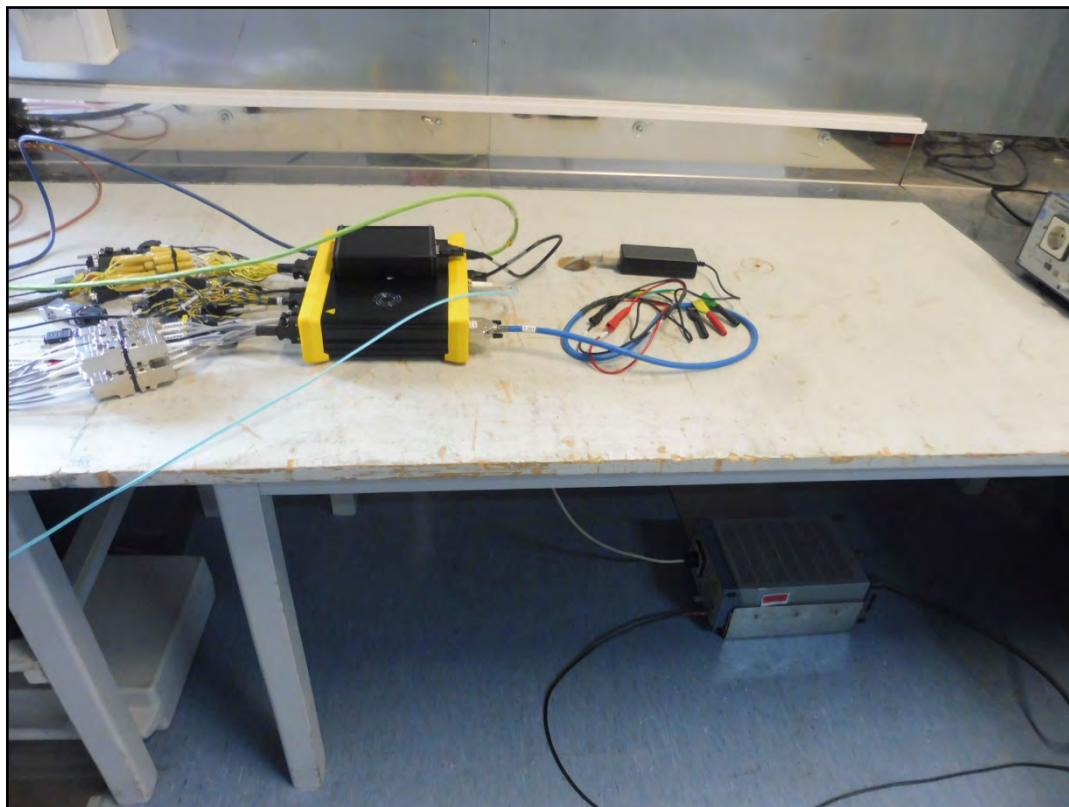


Photo 10: conducted emission



## Annex B Photographs of the EUT

Photo 11: EUT B (Version 2)



Photo 12: EUT B (Version 2)





Photo 13: EUT B (Version 2)



Photo 14: EUT B (Version 2)



Photo 15: EUT B (Version 2)



Photo 16: EUT A (Version 1)





Photo 17: EUT A (Version 1)



Photo 18: EUT A (Version 1)



Photo 19: EUT A (Version 1)



Photo 20: EUT A (Version 1)





Photo 21: EUT A (Version 1)



Photo 22: EUT (inside view)





Photo 23: EUT (inside view)

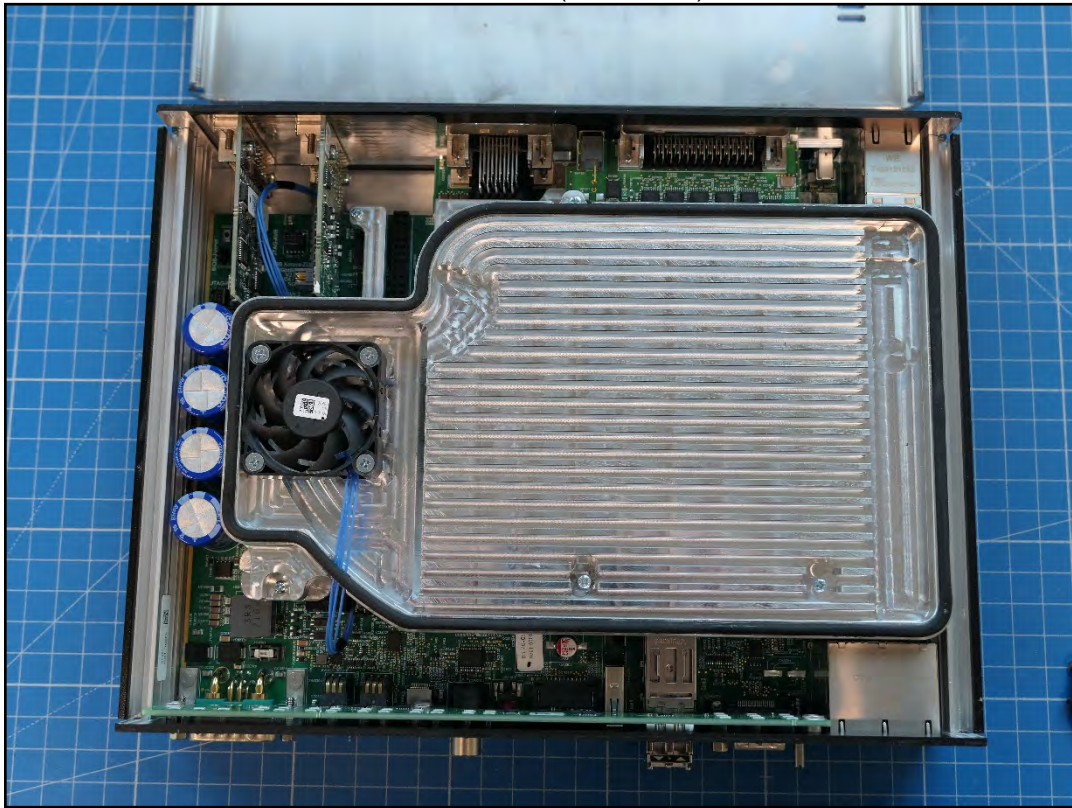


Photo 24: EUT (inside view)

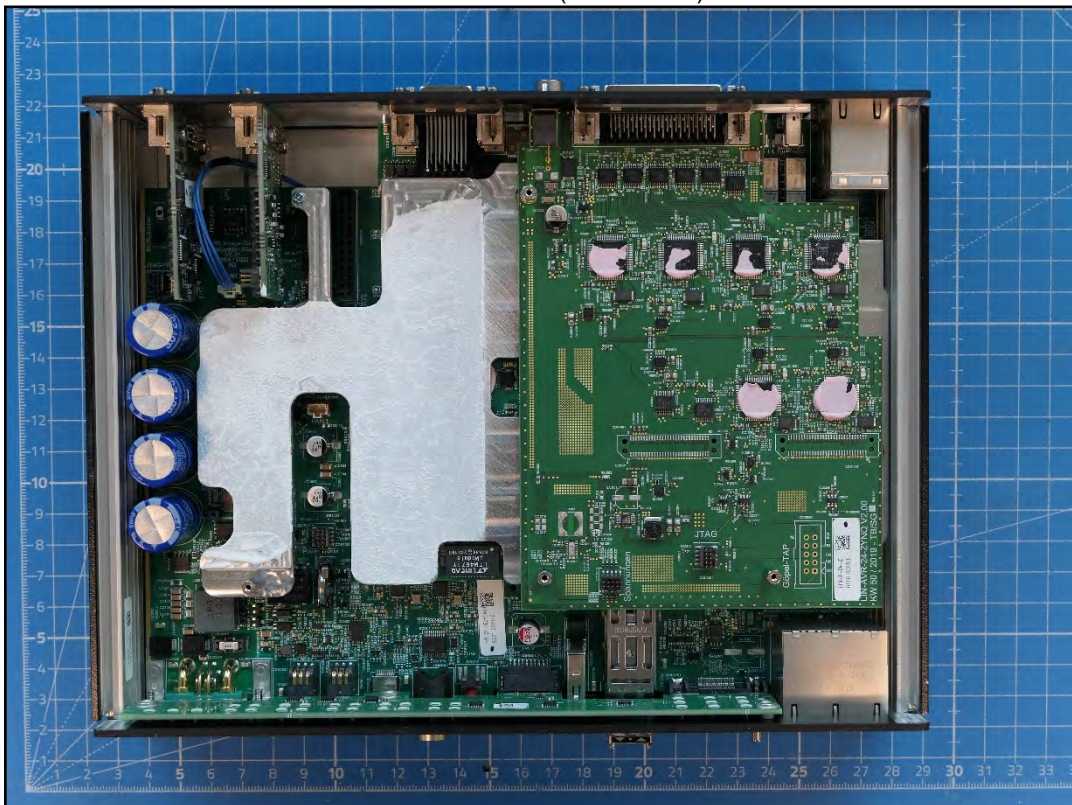




Photo 25: EUT (inside view)

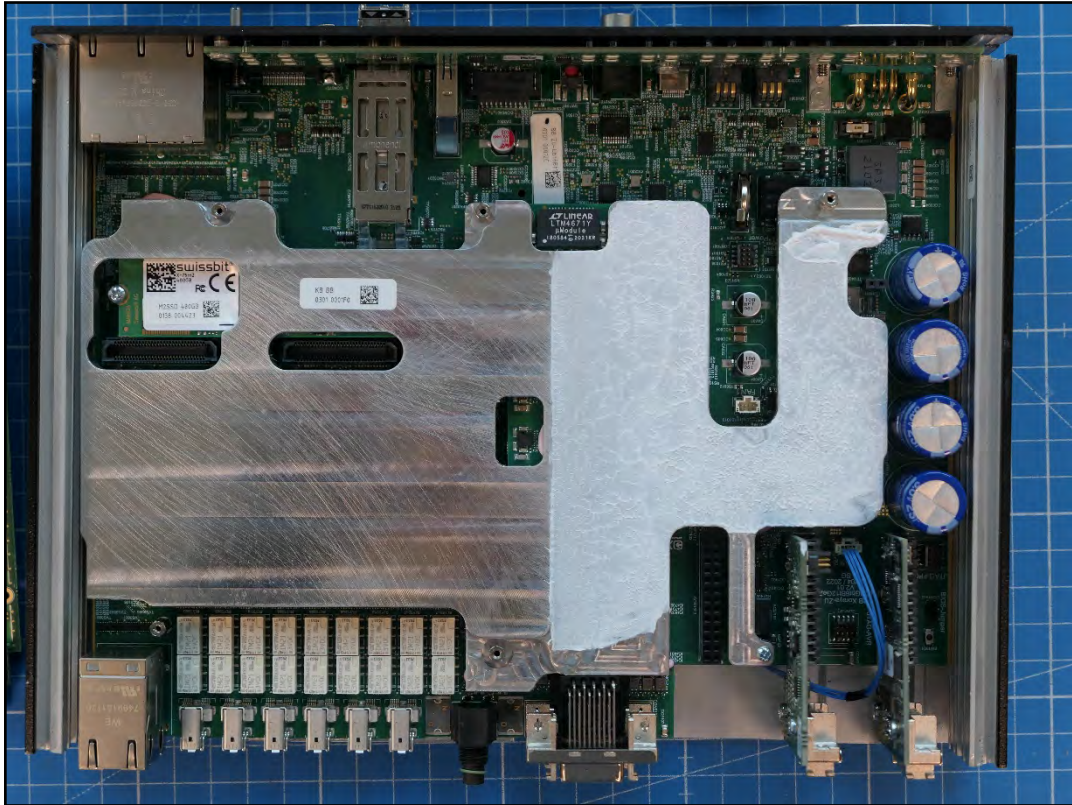


Photo 26: EUT (inside view)

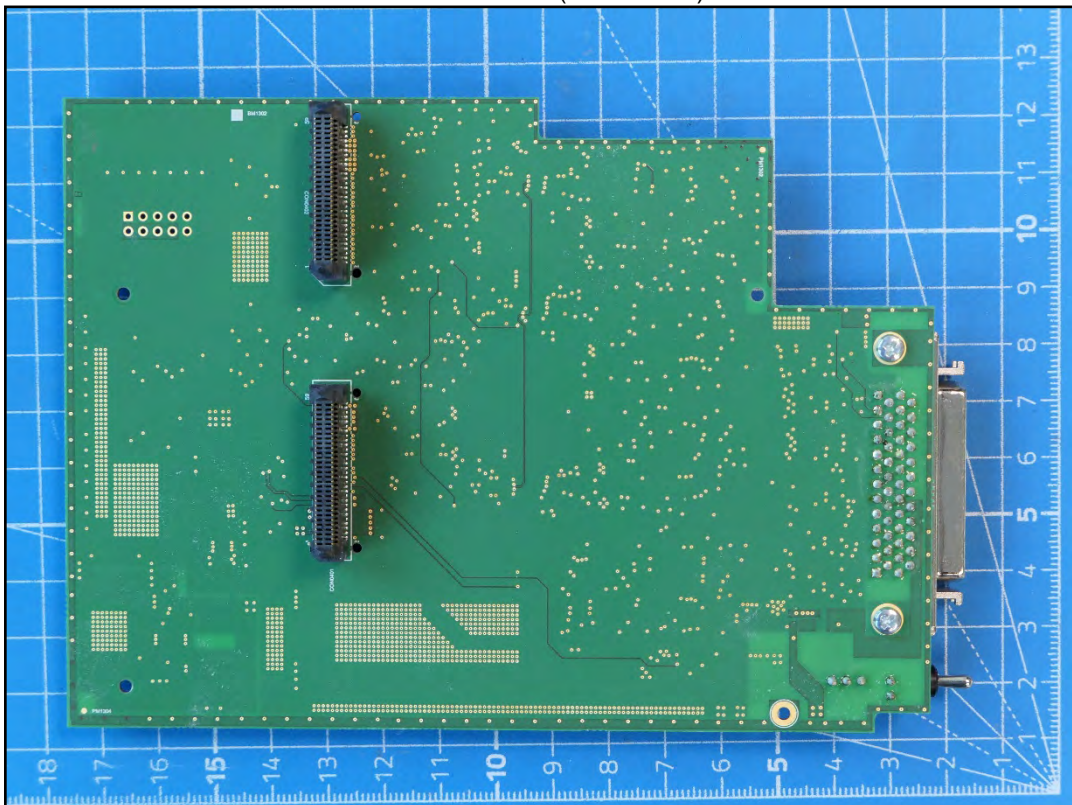


Photo 27: EUT (inside view)



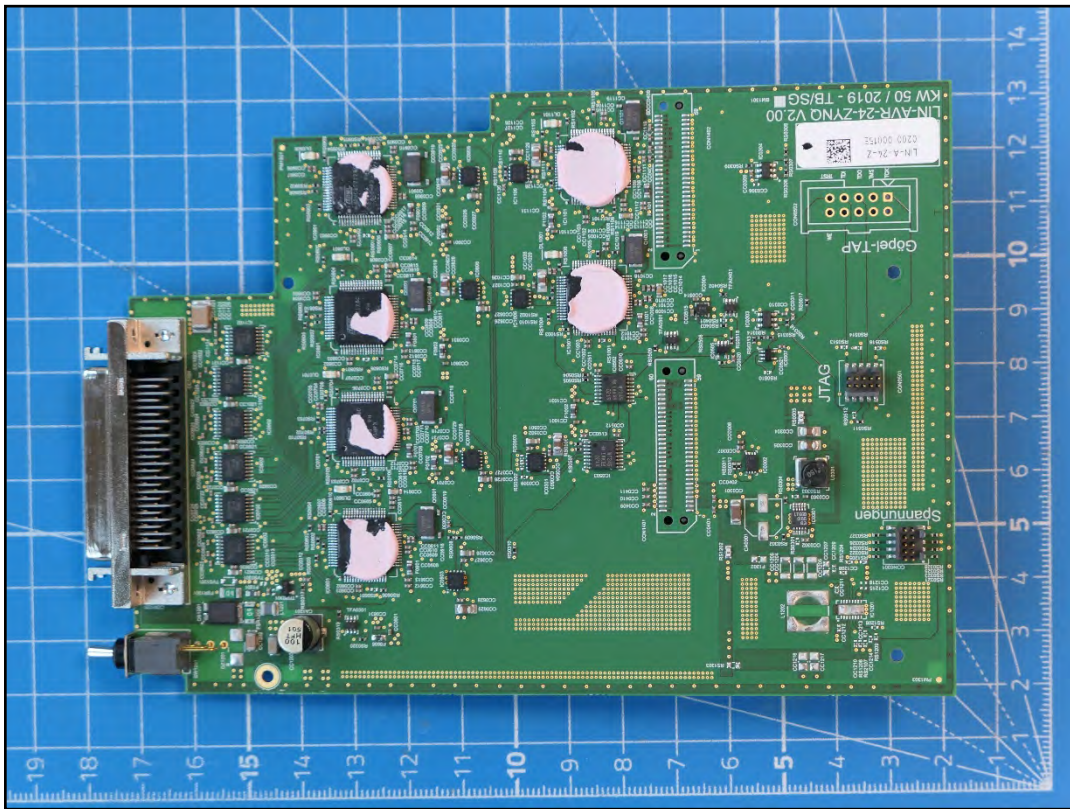


Photo 28: EUT (inside view)

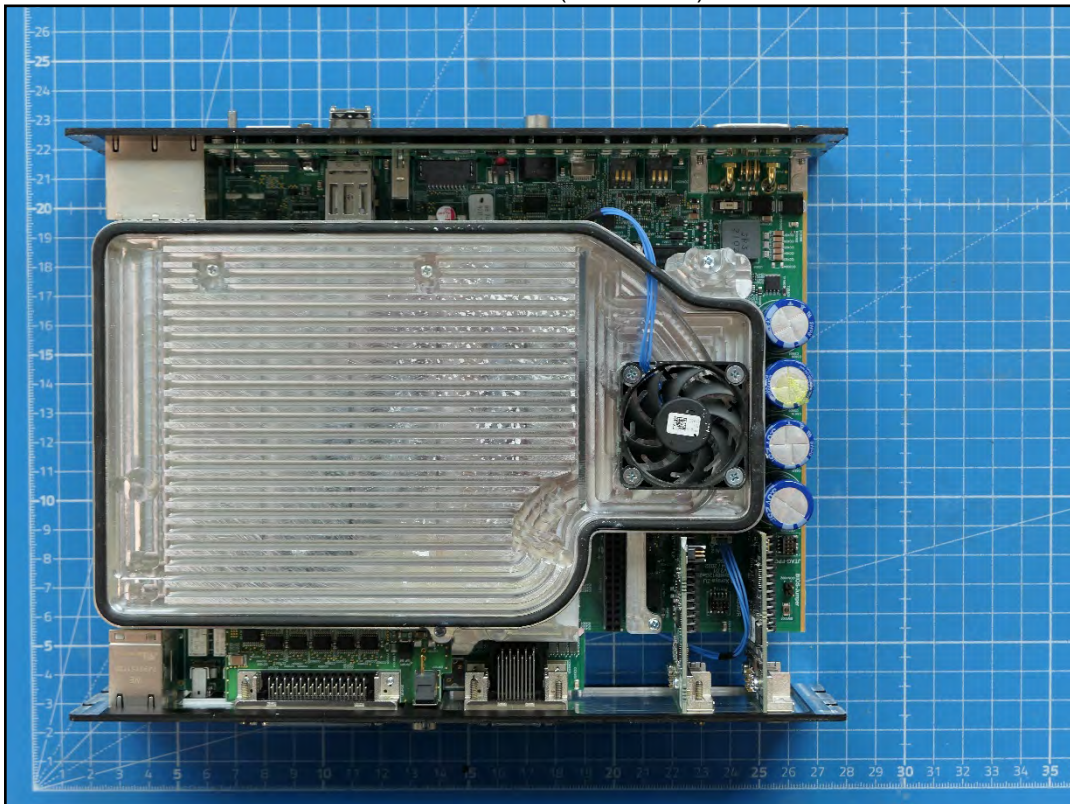




Photo 29: EUT (inside view)

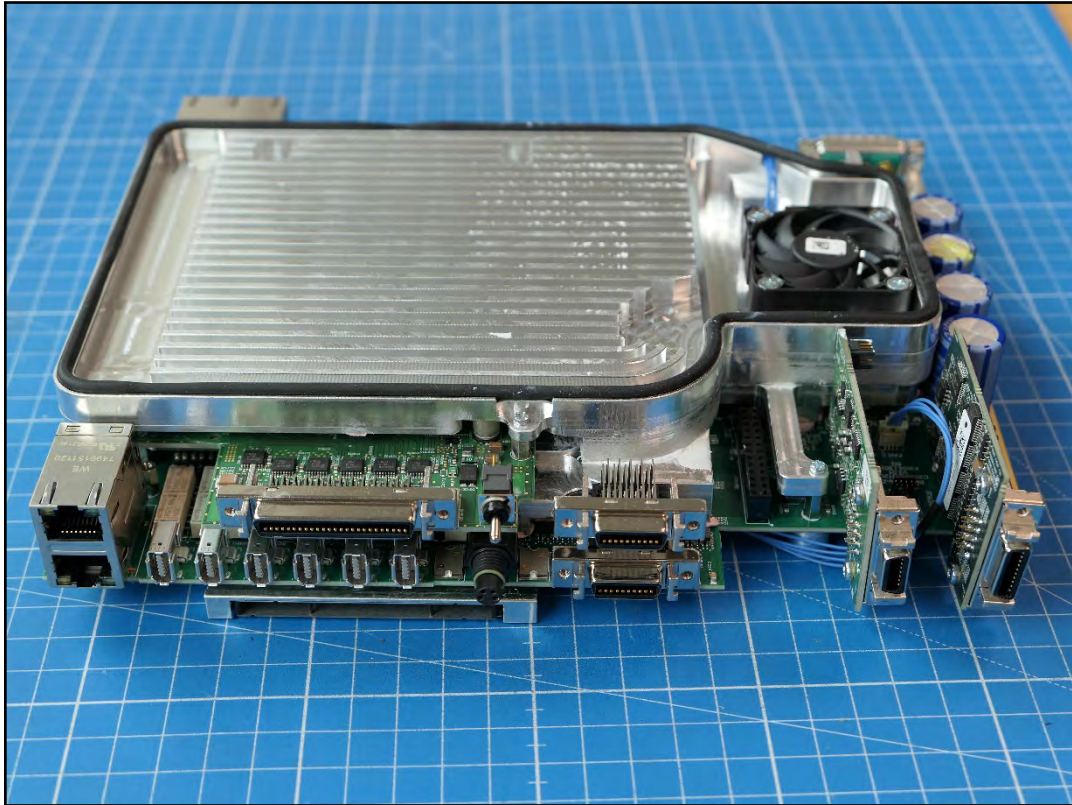


Photo 30: EUT (inside view)

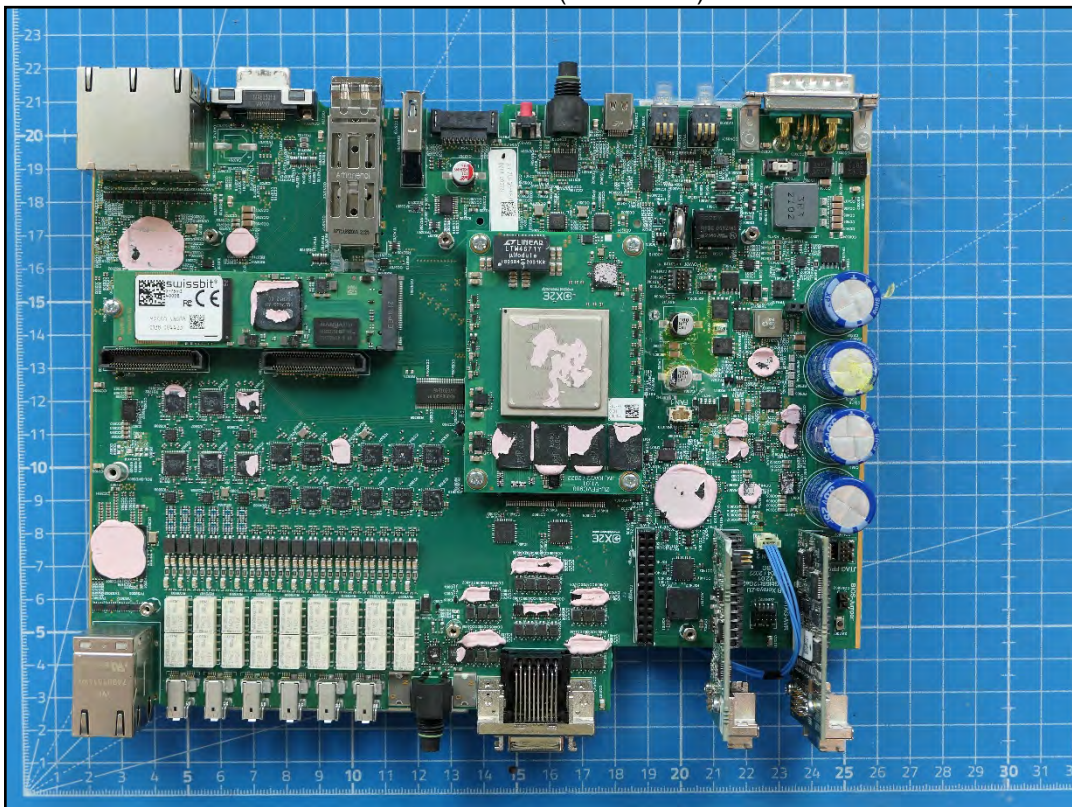
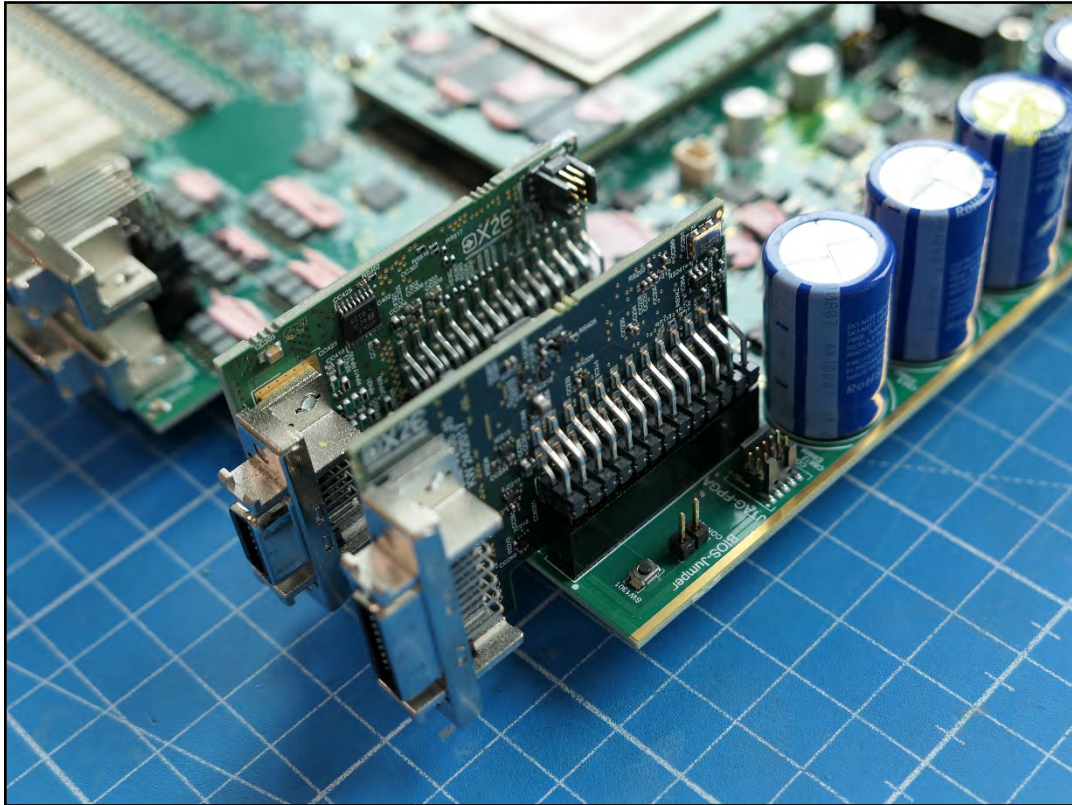


Photo 31: EUT (inside view)





**Annex C Document history**

Version	Applied changes	Date of release
- / -	Initial release	2022-10-19
-A	FCC ID added	2023-01-13

This test report replaces the test report 1-4988/22\_01-04 and dated 2022-10-19

**Annex D Further information****Glossary**

DUT	-	Device under Test
EMC	-	Electromagnetic Compatibility
EUT	-	Equipment under Test
FCC	-	Federal Communication Commission
FCC ID	-	Company Identifier at FCC
HW	-	Hardware
IC	-	Industry Canada
Inv. No.	-	Inventory number
N/A	-	not applicable
S/N	-	Serial Number
SW	-	Software