

# **User Manual**

**Motion Sensor**

**Model: SMS0A**

This user manual contains important information regarding the operation of your motion sensor. Ensure you read this user manual fully before installing and operating the device. If you are installing this device for use by others, you must leave this manual (or a copy of it) with the end user.

## Say Hello to Motion Sensor



This motion sensor is designed to alert you to movement inside your home. It can be mounted using the double-sided tape or screws on the back.

## Set Up Your App Account

### Download the X-Sense Home Security App



To download the **X-Sense Home Security** App, scan the QR code or search for “**X-Sense Home Security**” in the Apple App Store or Google Play. Sign up with a valid email address. If you already have an account, make sure the app is updated to the latest version.

**Note: Make sure your smartphone supports iOS 11 and higher, or Android 8.0 and higher.**

### **Before connecting devices, make sure that:**

1. You know your Wi-Fi network name and password.
2. You are connecting your device using a 2.4 GHz Wi-Fi network (incompatible with 5 GHz Wi-Fi network).
3. Make sure the Bluetooth on your phone is turned on.

**Note: When the device is configured via Wi-Fi, make sure your mobile phone and device are as close to the router as possible, which can speed up device configuration.**

## Set Up Your Motion Sensor

Setting up your devices involves three steps:

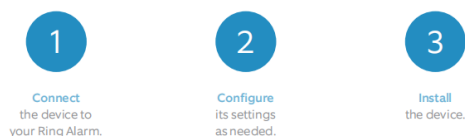
1. Add the device to the app.
2. Carefully read the installation steps in the app.
3. Follow the installation steps strictly according to the app.

**To avoid any usage issues, please do not install the device yourself without guidance from the app.**

- For the easiest setup, complete all three steps for each device before moving on to the next one. Use the app and this user manual to help you position your security devices to improve your home security.
- If you need to take a break, you can close the app and finish adding security devices later.

When you're ready to resume setup, open the X-Sense app and tap “⊕” on the right corner.

Setting up your Ring Alarm security devices involves three steps:



Some Alarm devices have plastic tabs that you pull out to power them on. To avoid problems during setup, do not pull them all out at once! When setting up a device, pull out its tab when the app prompts you to.

For the easiest setup, complete all three steps for each device before moving on to the next one. Use the app and this guide to help you position your Alarm devices to improve your home security.

If you need to take a break, you can close the app and finish adding security devices later. When you're ready to resume setup, open the Ring app and tap Set Up a Device.

### ***Friendly Reminder:***

- ***The motion sensor is set by default to not monitor motion when the system is in Disarm Mode or in Home Mode without selecting arming for this motion sensor. This means that motion cannot trigger an alarm, and you can move freely around your home. If you want the motion sensor to monitor motion, please switch to Away mode, or first select arming for this device in the Home Mode setting, and then switch to Home mode. This means that motion will trigger an alarm immediately.***
- ***To reduce frequent notifications and disturbances, the motion sensor is designed with a 1-minute trigger interval. This means that it will take 1 minute after each trigger before it can be triggered again.***
- ***In Motion Test, motion will be continuously monitored. Please walk back and forth within your desired monitoring range (especially in areas far from the device) once the Motion Test begins. This feature ensures that your desired monitoring range is fully covered and can also help you test for blind spots, pets, and other environmental triggers.***

## Adding to the X-Sense App

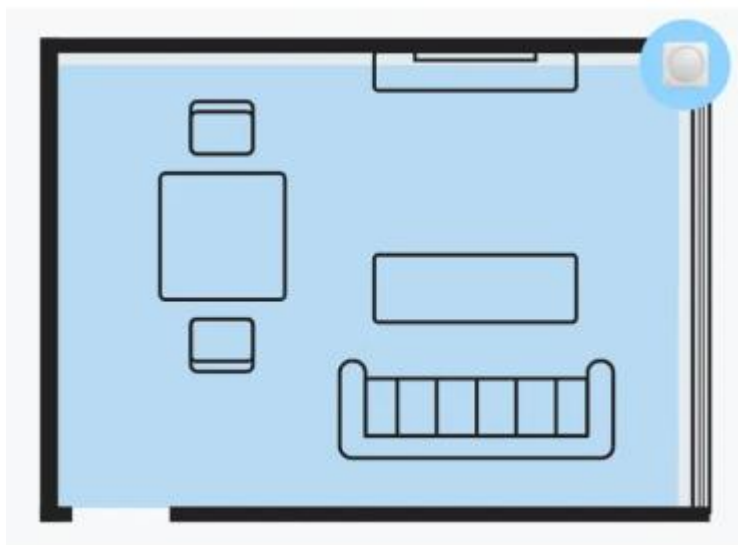
### Note

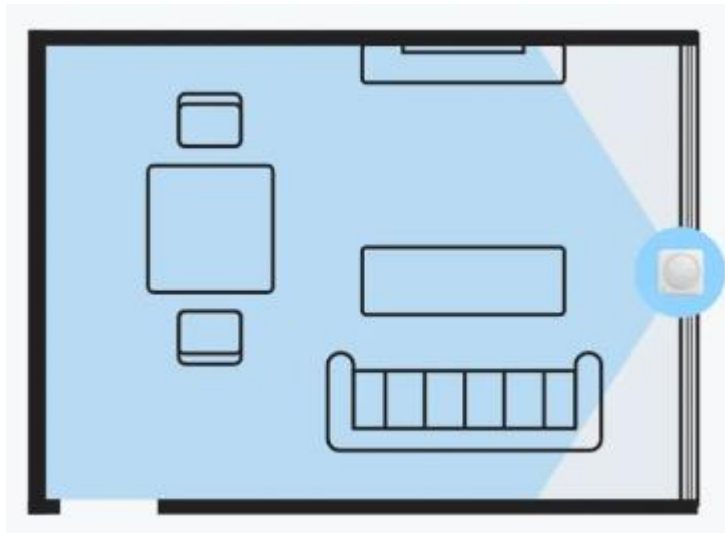
- *Before adding devices to the system, make sure the base station has been successfully added to the app.*
- *This product can only connect to the SBS50 base station and doesn't work with the Link<sup>+</sup> wireless interconnected network.*

1. Tap "⊕", and select "Home Security Systems" in the product list, select "Home Security Systems (Working with SBS50 base station)", then select "Motion Sensor (SMS0A)".
2. Enter a name for the sensor. Then tap "Next."
3. Follow the prompts on the page by quickly pressing the pairing button twice on the device until the LED flashes blue rapidly, indicating that the device is waiting to connect to the Wi-Fi.
4. Tap "Next" to add the device. You will hear "Ready to add the device."
5. After successfully connected, you will hear "Device added" and the "Device added" page will appear. Then, the app page will go to "Installation & Setup." Follow the instructions in the app to complete the installation.
6. If you want to add multiple devices into the system, please repeat the above steps.

**NOTE:** *If you fail to add the motion sensor to the network within 60 seconds, the device will automatically exit the network configuration. To re-enter the network configuration, you need to repeat the above steps.*

## Installation





You can install the motion sensor on the wall or in a corner, but placing it in a corner will provide a wider monitoring range.

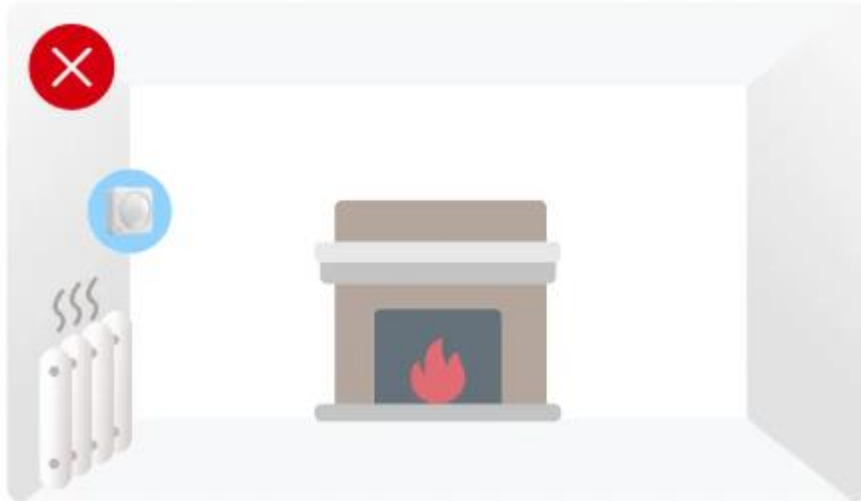
**Suitable locations for installing the motion sensor:**

- Front and back entryways
- Hallways
- Rooms
- Basements with outside access

**Locations not suitable for installing the motion sensor:**



- Do not place it outdoors or in extreme temperature conditions.



- Please do not place it in direct sunlight or near heaters, stoves, or vents, and avoid placing it near heat-generating household appliances such as microwaves, routers, etc.



- Do not aim it at windows.

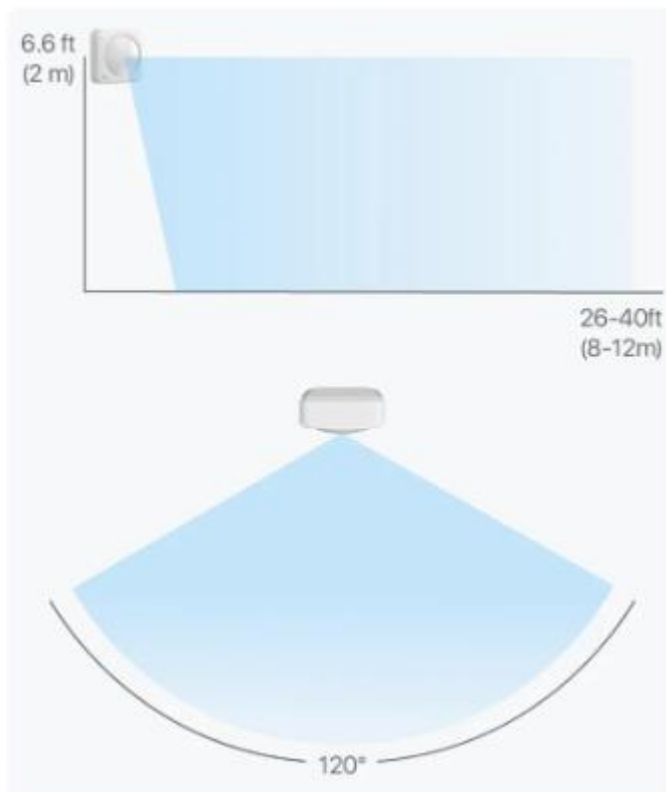


- Do not aim it at stairs.



- Do not use near large pets.

Please follow the instructions provided in the app carefully to complete the entire installation process. Please pay special attention:



**1. The maximum monitoring distance of the device is approximately 26-40 ft (8-12 m), and this distance may vary depending on the indoor environment.**

2. Within a distance of 2 ft (0.6 m) from the device is a blind area for monitoring. Do not install it in narrow passages or similar locations to avoid missed reports.
3. Install at a height of 5.6 ft (1.7 m).

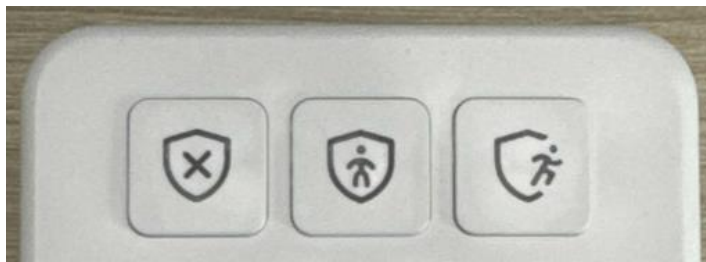
#### **To avoid false alarms:**

1. Do not place the sensor facing heat sources such as stoves, fireplaces, or sunlight through windows.
2. Adjust the sensitivity to accommodate environments with pets.
3. Try to configure the motion sensor to arm only in Away Mode and disarm in Home Mode as much as possible; this is also the default system setting.

## **Learn to Use Your Security System**

### **Security Modes**

- Your security system has three Security Modes to choose from: Disarm, Home and Away.
- You can switch between them using the Keypad or the X-Sense app.



#### **Disarm Mode**

No sensors inside your home are armed. Sensor triggers will not generate app notifications or base station alarms. This is useful when you're at home and want the freedom to go in and out easily.



#### **Home Mode**

In Home Mode, ALL SENSORS are DISARMED by default. You can selectively arm them according to your needs. Sensor triggers in armed mode will generate app notifications, and the base station will emit alarm sounds. This mode should be used when someone wants to stay home and feel safe.





### **Away Mode**

When you set the system to Away Mode, ALL SENSORS are ARMED by default. Sensor triggers in armed mode will generate app notifications, and the base station will emit alarm sounds. This setting is ideal for when you leave home unoccupied.

### **How to Arm and Disarm Your Security System**

**Using the keypad:** Enter your personal password, and then press the Disarm, Home, or Away Mode key to select your desired mode.

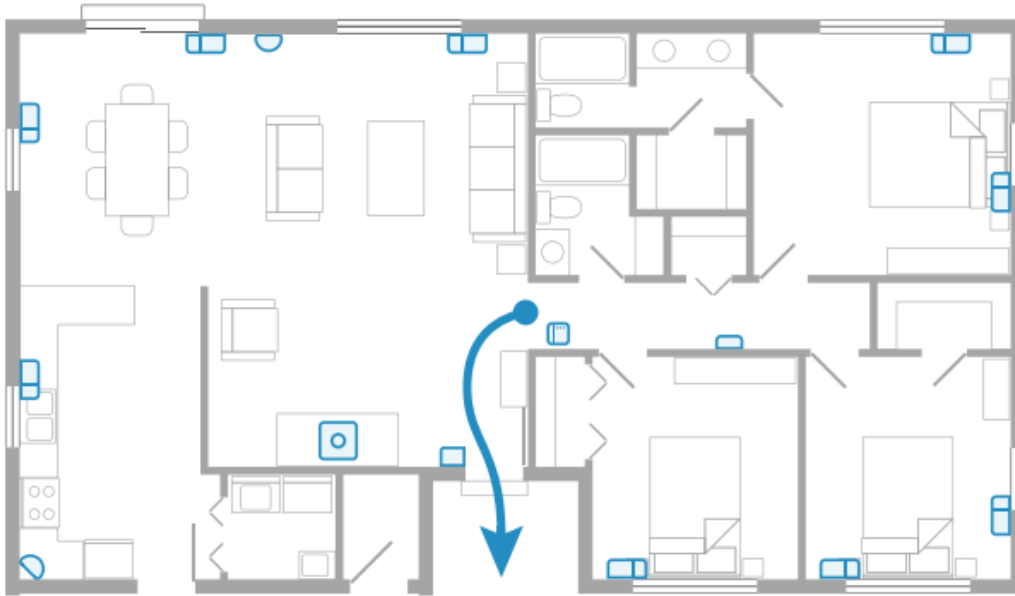
**Using the app:** Open the app and select “Control” at the bottom to select from Disarm, Home, or Away Mode.

### **Understanding Entry and Exit Delays**

**Exit Delay** gives you a short period of time to leave once you’ve armed the security system. After you arm your system, you’ll hear a series of beeps to remind you that there are only a few seconds to leave home. When your Exit Delay ends, your system will be armed. At this point, triggering a door and window sensor or motion sensor will immediately set off an alarm (if Entry Delay is not enabled) or start the Entry Delay countdown (if Entry Delay is enabled).

**Entry Delay** gives you a short time to disarm your security system after you return home. You’ll hear a series of beeps during the delay, and when the delay ends, if you don’t disarm, the security system will immediately start alarming.

To set Entry and Exit Delays, navigate to Control → Settings → Home Mode/Away Mode → Exit Delay/Entry Delay in the app and set up accordingly. You have the option to select “Off” for no delay, or choose from the following delay times: 15s, 30s, 45s, 60s, 120s, or 180s. Just make sure you give yourself enough time to arm and disarm your system.



### Critical Alerts (iOS)/Alarm Sound (Android)

- Panic Alarm function allows your phone to emit the same alarm sound as the base station when the security system is triggered, regardless of whether your phone is in silent or do-not-disturb mode, to alert you as much as possible. **This function is ON by default.**
- If you want to **set** this function, please tap on Control → Settings → Home Mode/Away Mode → Alarm Sound Settings → Critical Alerts Settings (iOS)/Alarm Sound Settings (Android) in the app, where you can check the devices you want to send panic alarms to and set the volume of panic alarms emitted by your phone.

## Technical Specifications

### Specifications of Motion Sensor

Power Supply	2 × 1.5 V AAA batteries (replaceable)
Battery Life	≥ 2 years (triggered 20 times per day)
Product Life	≥ 5 years
Monitoring Distance	The maximum monitoring distance is approximately 26–40 ft (8–12 m). This distance may vary depending on the indoor environment, with the Motion Test results being the most accurate reference.
Monitoring Angle	The horizontal monitoring angle is approximately 120 degrees. This angle may vary depending on the indoor environment, with the Motion Test results being the most accurate reference.
Operating Temperature	32–104°F (0–40 °C)
Operating Frequency	US: 902–928 MHz

	EU: 868.0–868.6 MHz
Max. RF Power	EU: 25 mW

### LED Indicator of Motion Sensor

Mode	Status Indicator Light (Red/Blue)
Powering on	Flashes red slowly once.
Wi-Fi pairing	Flash blue rapidly continuously.
Successfully paired	N/A
Normal working status	N/A
Motion detection triggered in online mode	Flashes blue rapidly once.
Motion detection triggered in offline or unpaired mode	Flashes red rapidly once.
Motion test	Consistent with motion detection triggered light behavior.
Device test	Rapidly flashes blue 3 times.
Low battery	Flashes red once every 60 seconds.

### Troubleshooting

Problems	Cause	Solution
I don't know where are suitable places to install the motion sensor.		<ul style="list-style-type: none"> <li>● Front and back entryways.</li> <li>● Hallways.</li> <li>● Rooms.</li> <li>● Basements with outside access.</li> </ul>
I don't know where are unsuitable places to install the motion sensor.		<ul style="list-style-type: none"> <li>● Do not place them outdoors or in extreme temperature environments.</li> <li>● Avoid placing them in direct sunlight or near heaters, furnaces, or vents, and avoid placing them near heat-generating household appliances such as microwaves, routers, etc.</li> <li>● Do not aim them at windows.</li> <li>● Do not aim them at staircases.</li> <li>● Avoid using them near large pets.</li> </ul>
If the Motion Test fails during installation, I don't know how to troubleshoot the problem, then rerun the Motion	The network of the router or mobile phone is abnormal.	Make sure that the network connection of the base station and the mobile phone is functioning properly.
	The distance between the base station and the motion sensor is too far or communication is	Move the base station closer to the location of the motion sensor within the house, minimizing walls and obstacles between the base station and the motion sensor. Avoid placing the base station

Test.	obstructed.	in enclosed spaces, especially within metallic objects.
	Installation was not strictly following the instructions provided in the app installation process.	Install strictly following the instructions provided in the app installation process. Make sure that the motion sensor is installed at the height and angle specified in the app installation process. Keep the motion sensor level and avoid tilting.
	Sensitivity setting is too low.	Due to the varying indoor environments affecting detection distance, try increasing the sensitivity for better monitoring results. However, please note that higher sensitivity settings may lead to more frequent triggers and increase the likelihood of false alarms due to pet activity, etc.
	Human body movement beyond detection range.	The device's maximum detection range is approximately 26-40 ft (8-12 m). When beyond this distance, movement of a human body will not trigger the device. The specific value of the maximum detection range may vary depending on the indoor environment, and the actual detection range should be based on the results of the Motion Test.
	Movement of a human body within the blind area of detection.	Due to technological limitations in the industry, there is a blind spot within 2 ft (0.6 m) of the device where movement of a human body will not trigger the device. Please avoid installing the device in narrow passages or similar locations.
The double-sided adhesive loses its adhesion or falls off and cannot be reused.		Please purchase strong double-sided adhesive, cut it into appropriate shapes, and stick it to the adhesive position on the device. Then reattach the device to the wall. If you encounter any difficulties, please contact our customer service.
The system didn't alarm when I passed in front of the motion sensor.	The system is currently in Disarm Mode, or in Home Mode without arming this motion sensor.	Switch to Away Mode.
		Arm this motion sensor in "Arm the Sensor" under Home Mode Settings, then switch to Home Mode.
		Check "Home Mode" in the Mode Settings on the device details page, then switch to Home Mode.
	The device has just been triggered. To reduce push notification disturbances, it is	Once the 1-minute push interval has elapsed, the motion sensor can be triggered again.

	designed with a 1-minute trigger interval, meaning it needs to wait for 1 minute after each trigger before it can be triggered again.	
	Movement of a human body within the blind area of detection.	Due to technological limitations in the industry, there is a blind spot within 2 ft (0.6 m) of the device where movement of a human body will not trigger the device.
	Sensitivity setting is too low.	Due to the varying indoor environments affecting detection distance, try increasing the sensitivity for better monitoring results. However, please note that higher sensitivity settings may lead to more frequent triggers and increase the likelihood of false alarms due to pet activity, etc.
	The motion sensor is aligned with the stairs.	The environment of the stair area may create blind spots for the motion sensor, especially around stair corners or landing areas. Avoid installing the sensor facing the stairs.
The system triggered an alarm even though no one passed in front of the motion sensor.	A pet triggered the motion sensor.	Avoid installing it in areas where pets frequently move, especially for large pets. Additionally, try lowering the sensitivity.
	A heat source triggered the motion sensor.	Avoid installing it in areas exposed to direct sunlight or near heaters, stoves, or vents. Also, avoid placing it near heat-generating household appliances such as microwaves, routers, etc.
	Sunlight triggered the motion sensor.	Avoid installing facing windows.
	The motion sensor is aligned with the stairs.	Stairs typically connect different floors and may experience significant airflow and light changes, which could be incorrectly detected as motion. Avoid installing the sensor facing the stairs.
	Someone passed by outside the detection range of the motion sensor.	The motion sensor has a maximum detection range of 26-40 ft (8-12 m) and a horizontal detection angle of 120°. This distance and angle may vary depending on the indoor environment. Due to technological limitations in the industry, there is still a probability of detecting movement when someone passes by outside the detection range of the motion sensor.
The base station alarm volume is	The base station alarm volume setting is too	Tap on Control → Settings → Home/Away Mode → Alarm Sound Settings → Set Base

low.	low.	Station Volume to increase it.
Unable to add the motion sensor to the app.	The motion sensor has not entered the Wi-Fi pairing mode.	Remove the backplate of the motion sensor, then press the Pairing button twice to activate Wi-Fi pairing mode for the sensor.
The base station failed to connect to the network.	The entered Wi-Fi name and/or password are wrong.	Enter the correct Wi-Fi name and password.
	The phone Bluetooth is not turned on.	Turn on the phone's Bluetooth.
	The base station is not entering pairing mode.	Press and hold the Pair button on the base station for 5 seconds and the LED will flash yellow while entering pairing mode.
Unable to receive app notifications or operation failure.	The phone has disabled push notifications for the X-Sense Home Security app.	Enable push notifications for the app.
	The batteries ran out.	Replace with new batteries.
	Communication between the base station and the router is obstructed or the distance is too far.	Reduce obstacles between the base station and the router, including metal doors, thick walls, etc. The maximum distance allowed between the base station and the router in an open environment is 170 ft (50 m).
	Communication between the sensor and the base station is obstructed or the distance is too far.	Reduce obstacles between the sensor and the base station. The maximum distance allowed between the sensor and the base station in an open environment is 1,700 ft (500 m).
	The motion sensor is installed on a metal object.	Metal objects may interfere with the wireless signal, causing the device to disconnect. Do not install on metal objects.
	The network connection of the router and the mobile phone is abnormal.	Make sure the network connection of the router and the mobile phone is working normally.
The app shows the base station is offline.	The Wi-Fi connection of the base station is disconnected.	Make sure the network of the router connected to the base station is functioning properly.
	The base station has lost power.	Make sure the base station is properly connected to its power source.
The app shows the motion sensor is offline.	Communication between the sensor and the base station is	Reduce obstacles between the sensor and the base station. The maximum distance allowed between the sensor and the base station in an

	obstructed or the distance is too far.	open environment is 1,700 ft (500 m).
	The batteries ran out.	Replace with new batteries.
The app indicates low battery.	Low battery.	Replace with new batteries.

## Environmental Protection

The crossed-out wheeled-bin symbol on your product, literature, or packaging reminds you that all electrical and electronic products, batteries, or accumulators must be taken to designated collection locations at the end of their working life. Do not dispose of these products as unsorted municipal waste. Dispose of them according to the laws and rules in your area.



## FCC statement

1. This device complies with part 15 of the FCC Rules. Operation is subject to the following two conditions:

- (1) This device may not cause harmful interference.
- (2) This device must accept any interference received, including interference that may cause undesired operation.

2. Note: This equipment has been tested and found to comply with the limits for a Class B digital device. These limits are designed to provide reasonable protection against harmful interference in a residential installation. This equipment generates, uses and can radiate radio frequency energy and, if not installed and used in accordance with the instructions, may cause harmful interference to radio communications. However, there is no guarantee that interference will not occur in a particular installation. If this equipment does cause harmful interference to radio or television reception, which can be determined by turning the equipment off and on, the user is encouraged to try to correct the interference by one or more of the following measures:

- Reorient or relocate the receiving antenna.
- Increase the separation between the equipment and receiver.
- Connect the equipment into an outlet on a circuit different from that to which the receiver is connected.
- Consult the dealer or an experienced radio/TV technician for help.

3. Changes or modifications not expressly approved by the party responsible for compliance could void your authority to operate the equipment.

4. Radiation Exposure Statement

This equipment complies with FCC radiation exposure limits set forth for an uncontrolled environment. This equipment should be installed and operated with minimum distance 20cm between the radiator and your body.

## WARNING

### 1. BATTERIES

- KEEP NEW OR OLD USED BATTERIES OUT OF REACH OF CHILDREN.
- In the event of a battery leaking, do not allow the liquid to come into contact with the skin or eyes. If contact has been made, wash the affected area with copious amounts of water and seek medical advice immediately.
- NEVER charge a battery unless it is a rechargeable battery.
- Do not mix alkaline, standard (carbon-zinc) or rechargeable (Ni-Cd; Ni-MH) batteries.
- Different types of batteries or new and used old batteries are not to be mixed. Do not mix batteries of different manufacturers, capacities, or sizes.
- Batteries must be inserted with the correct polarity. Replacement of a battery with an incorrect type can defeat the safeguard. There will be a risk of fire or explosion if a battery is replaced by an incorrect type.

### 2. RF ENERGY EXPOSURE AND PRODUCT SAFETY GUIDE

- Before using this device, please read this guide which contains important operating instructions for safe usage, control information and operational instructions for compliance with RF Energy Exposure limits in applicable national and international standards.
- User instructions should accompany the device when transferred to other users.

## Simple EU Declaration of Conformity

X-Sense Electronics Co., Ltd. declares that the radio equipment type is in compliance with the essential requirements and other relevant provisions of RED Directive 2014/53/EU and the RoHS Directive 2011/65/EU and the WEEE Directive 2012/19/EU; the full text of the EU declaration of conformity is available at the following internet address: [www.x-sense.com](http://www.x-sense.com).

## Manufacturer and Service Information

X-Sense Electronics Co., Ltd.

Address: Room 402, Building 4, No. 9, Jinshagang 1st Road, Shixia Village, Dalang Town, Dongguan City, 523750 Guangdong, P.R. China

Email: [support@x-sense.com](mailto:support@x-sense.com)



(法国 Triman 标识, 说明书)



(法国 Triman 标识, 电子电器产品和一次性电池可回收)