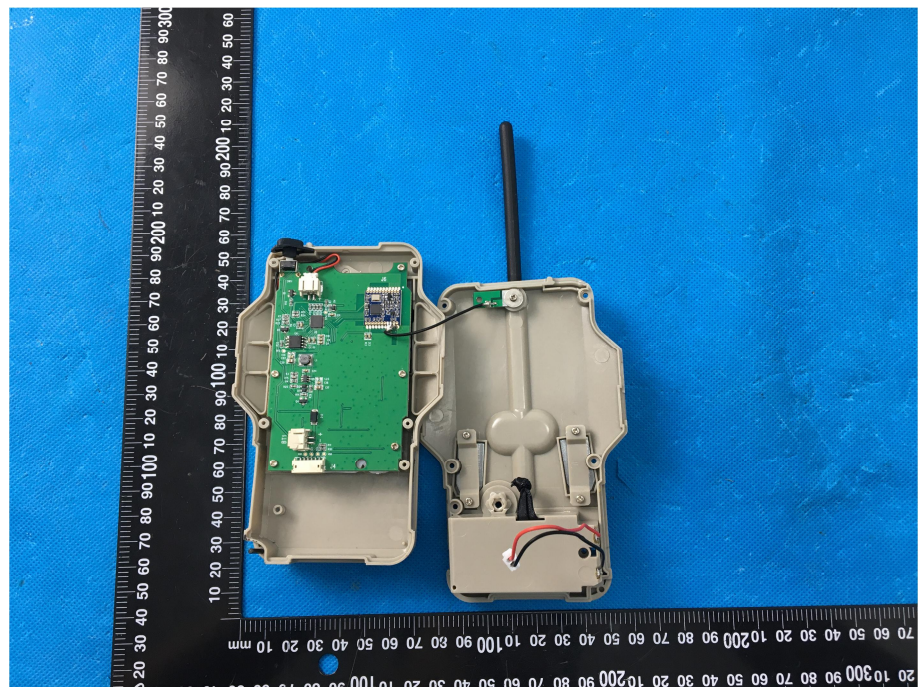


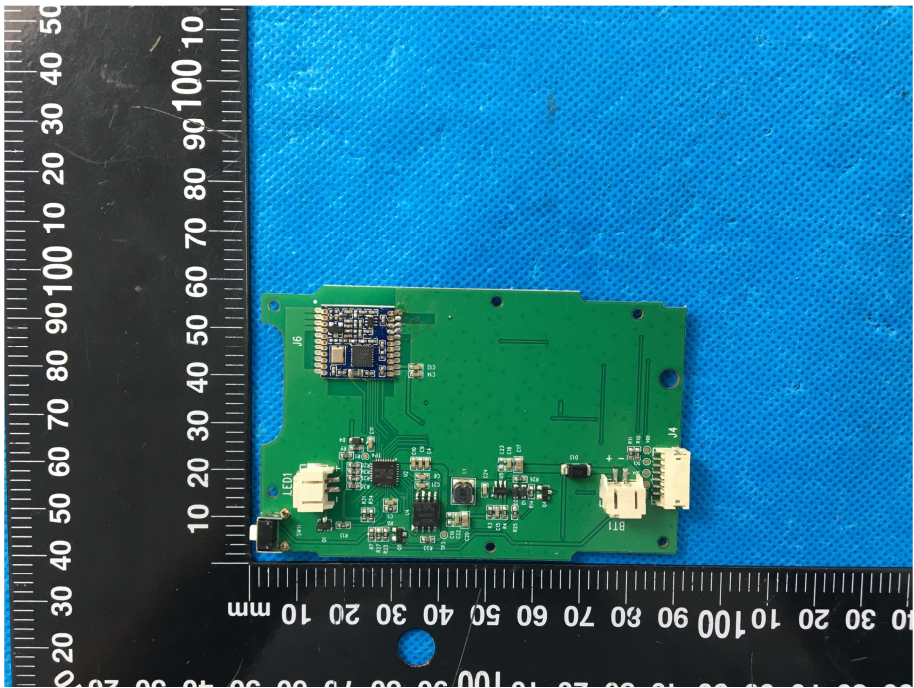
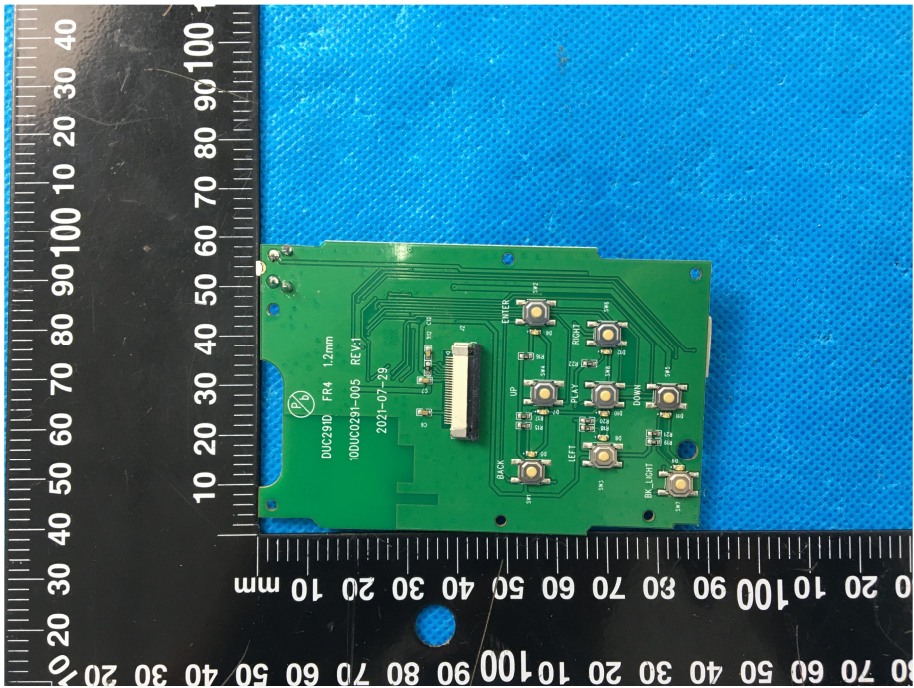
EXHIBIT 3 - EUT INTERNAL PHOTOGRAPHS

**EUT Housing and Board
View 1**



**EUT Housing and Board
View 2**



<p style="text-align: center;">Solder Board-Component View 1</p>	 A photograph of a green printed circuit board (PCB) component, labeled 'Solder Board-Component View 1'. The board is rectangular with several components mounted on it, including a large integrated circuit (IC) at the top, a smaller IC, and various passive components. A white connector is visible on the right side. The board is placed on a blue textured surface next to a black ruler with white markings in millimeters. The ruler shows measurements from 0 to 100 mm.
<p style="text-align: center;">Solder Board-Component View 2</p>	 A photograph of a green printed circuit board (PCB) component, labeled 'Solder Board-Component View 2'. The board features a central IC, several push buttons labeled 'BACK', 'ENTER', 'UP', 'DOWN', 'LEFT', 'RIGHT', and 'PLAY', and a 'BLUETOOTH' label. A white connector is visible on the left side. The board is placed on a blue textured surface next to a black ruler with white markings in millimeters. The ruler shows measurements from 0 to 100 mm. Text on the board includes 'DUC2910 FR4 1.2mm', '00UC0291-005 REV.1', and '2021-07-29'.

Antenna View

