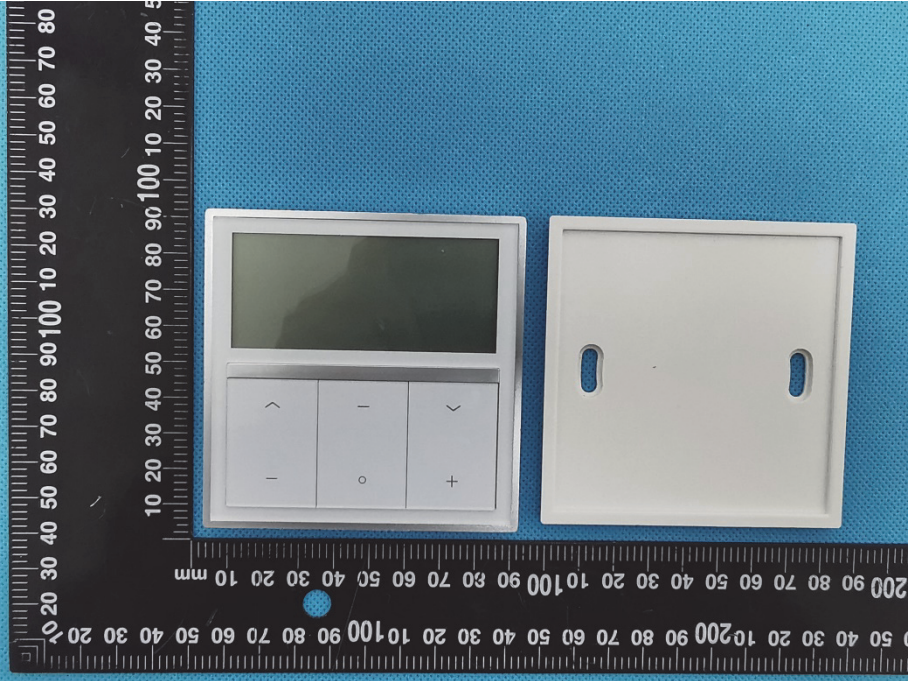
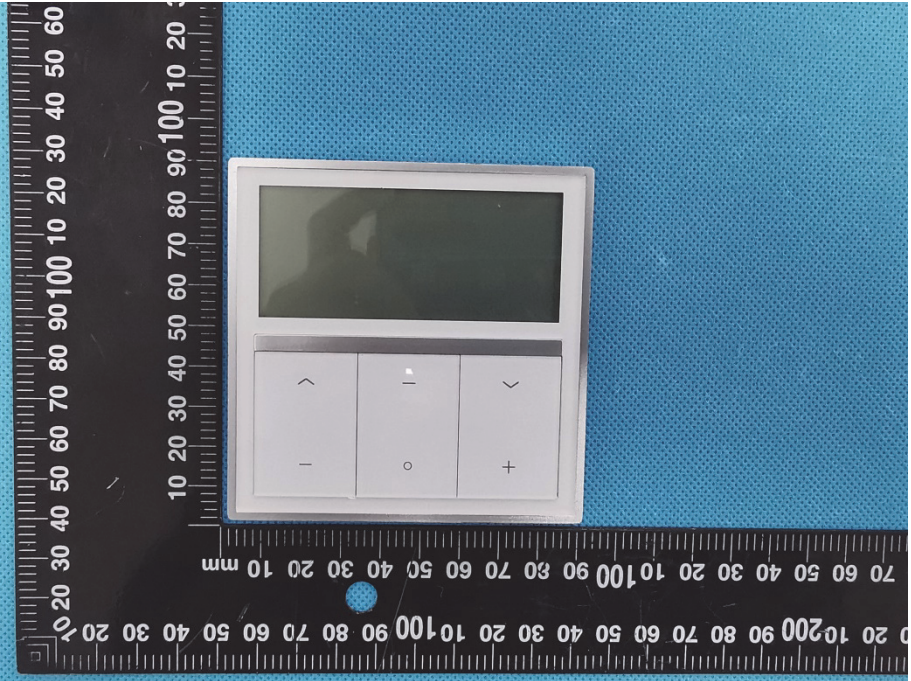
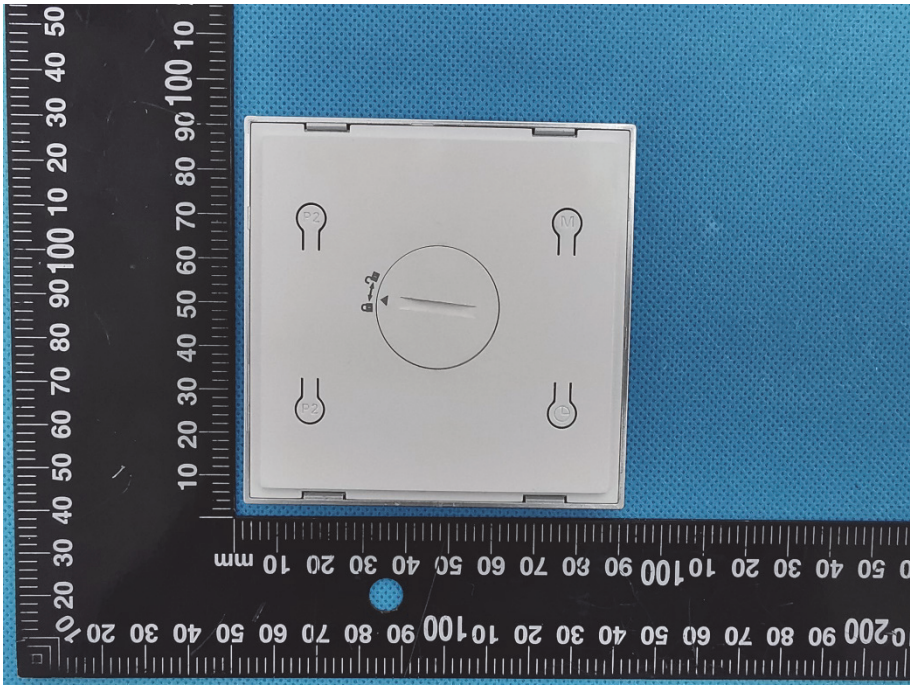
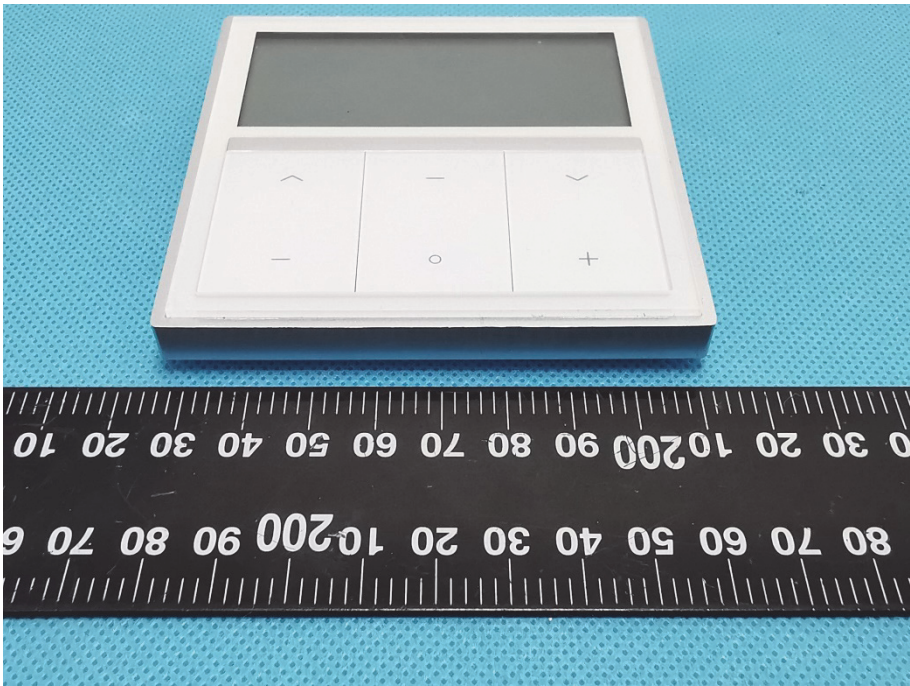
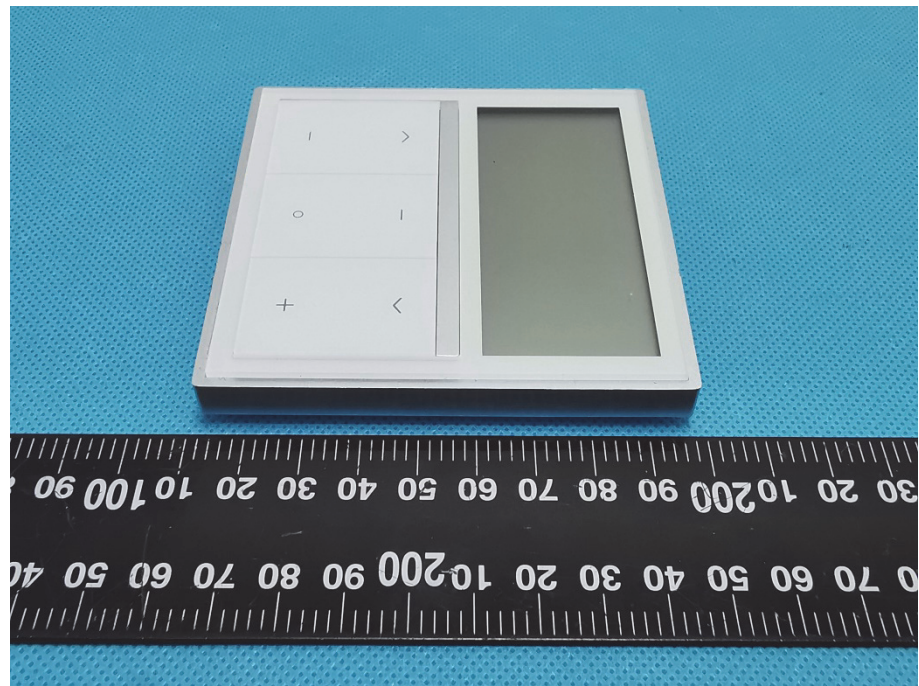


EXHIBIT 2 - EUT EXTERNAL PHOTOGRAPHS

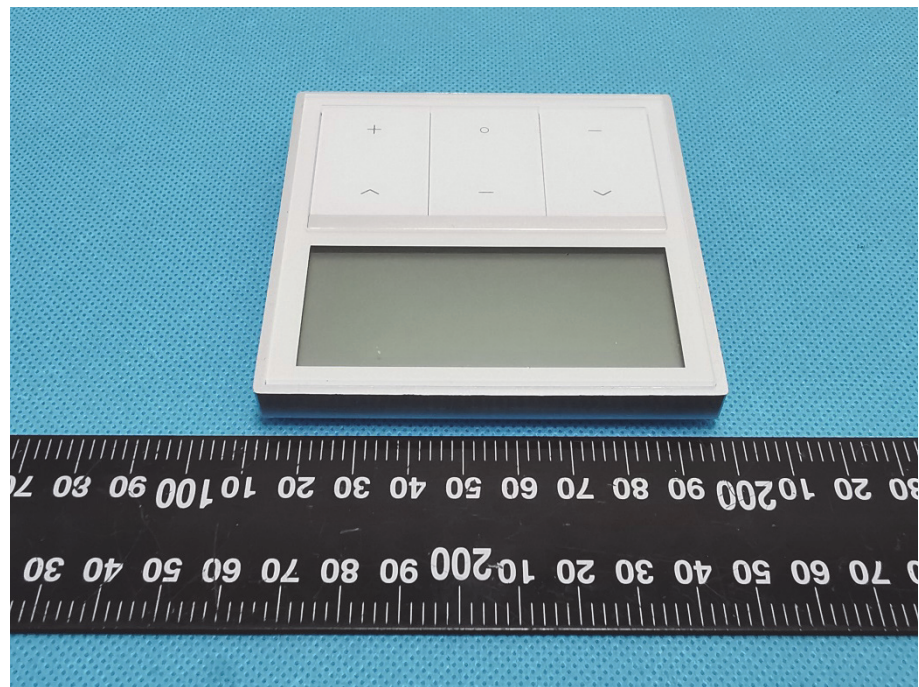
<p>EUT View 1</p>	 A photograph showing two white plastic components of an External Under Test (EUT) device. On the left is a control panel featuring a rectangular LCD screen at the top, and below it, a grid of six buttons: two with upward and downward arrows, one with a minus sign, one with a plus sign, and one with a central circle. To the right is a plain white rectangular cover plate with two vertical oval-shaped slots. Both components are placed on a blue textured surface next to a black ruler with white markings in millimeters and centimeters.
<p>EUT View 2</p>	 A close-up photograph of the white control panel from EUT View 1. It shows the LCD screen and the six buttons (up/down arrows, minus, plus, and center circle) in more detail. The panel is positioned on a blue textured surface next to a black ruler with white markings.

<p>EUT View 3</p>	
<p>EUT View 4</p>	

EUT View 5



EUT View 6



EUT View 7

