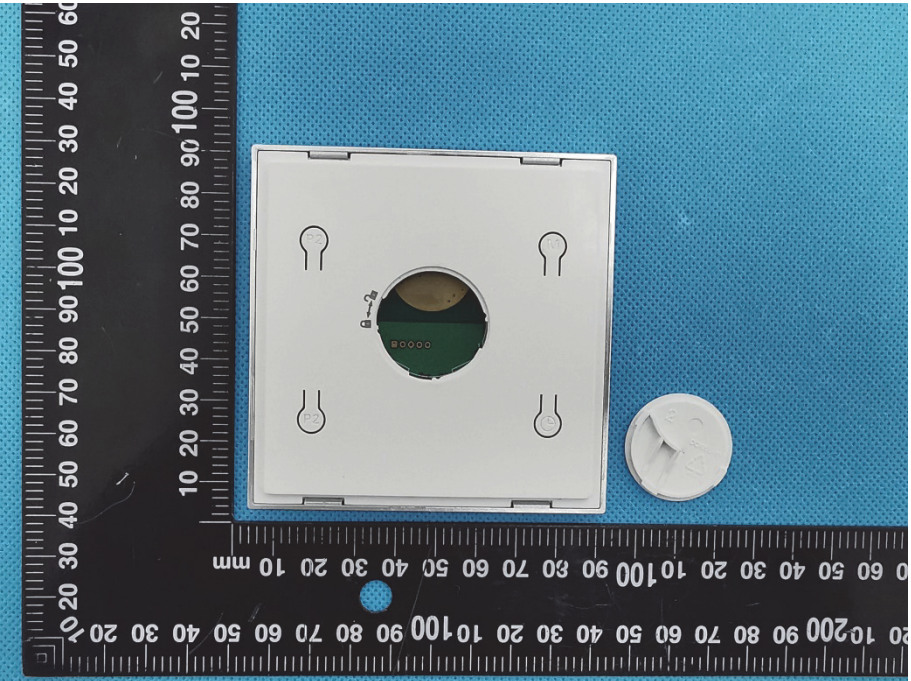
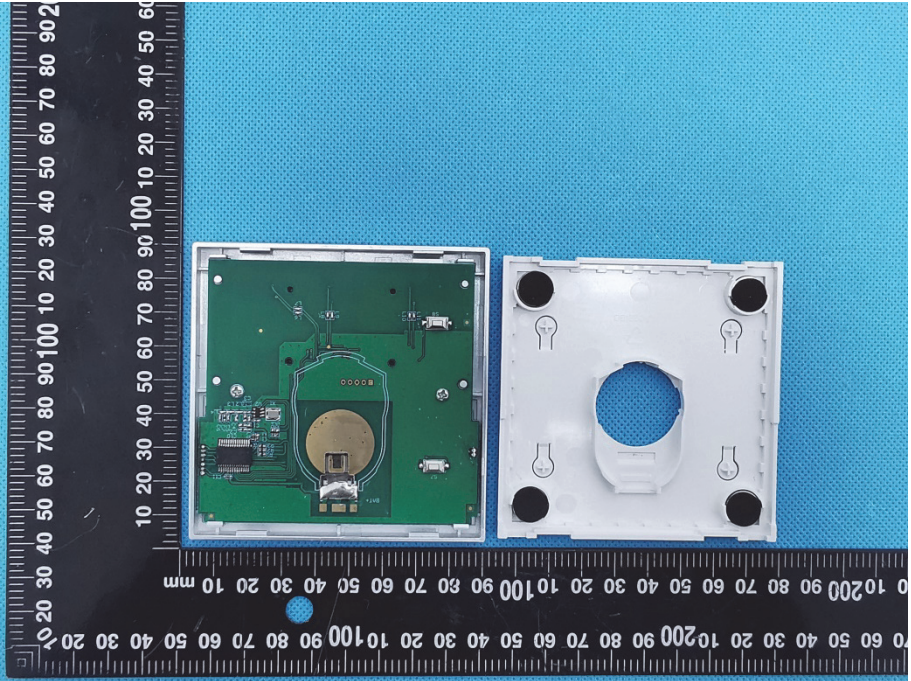
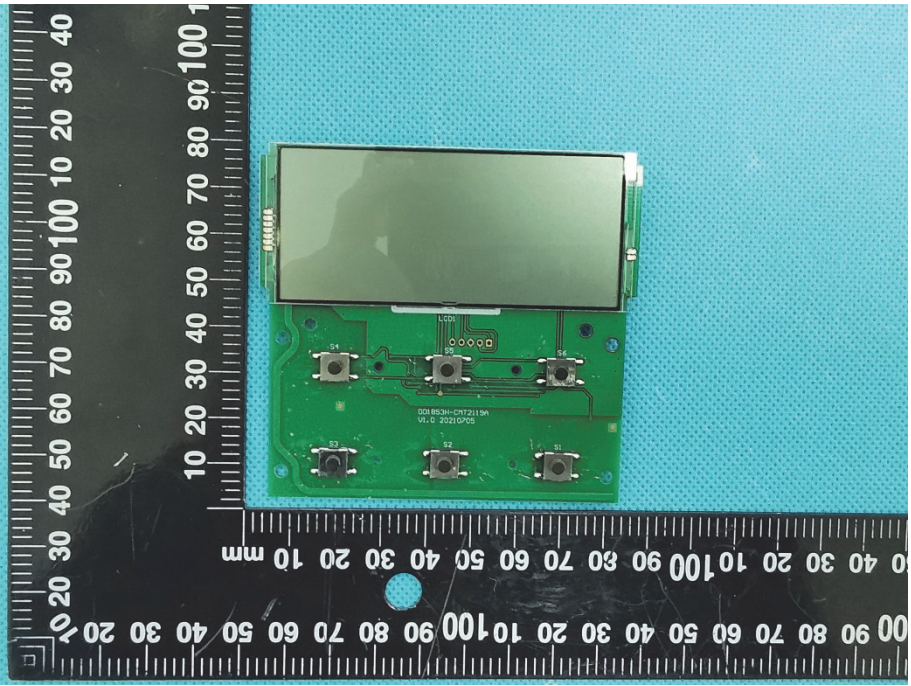
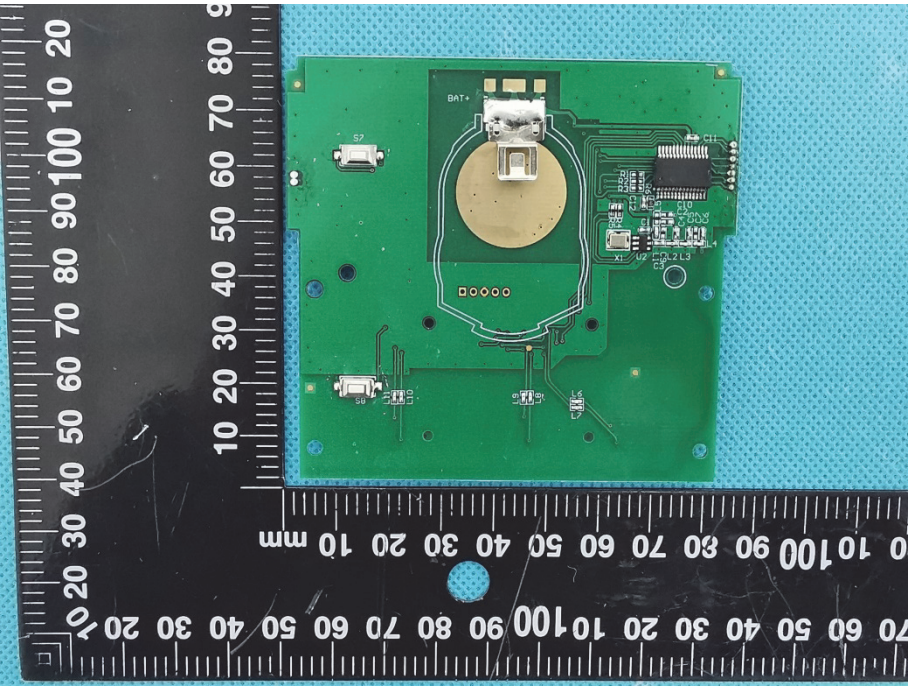
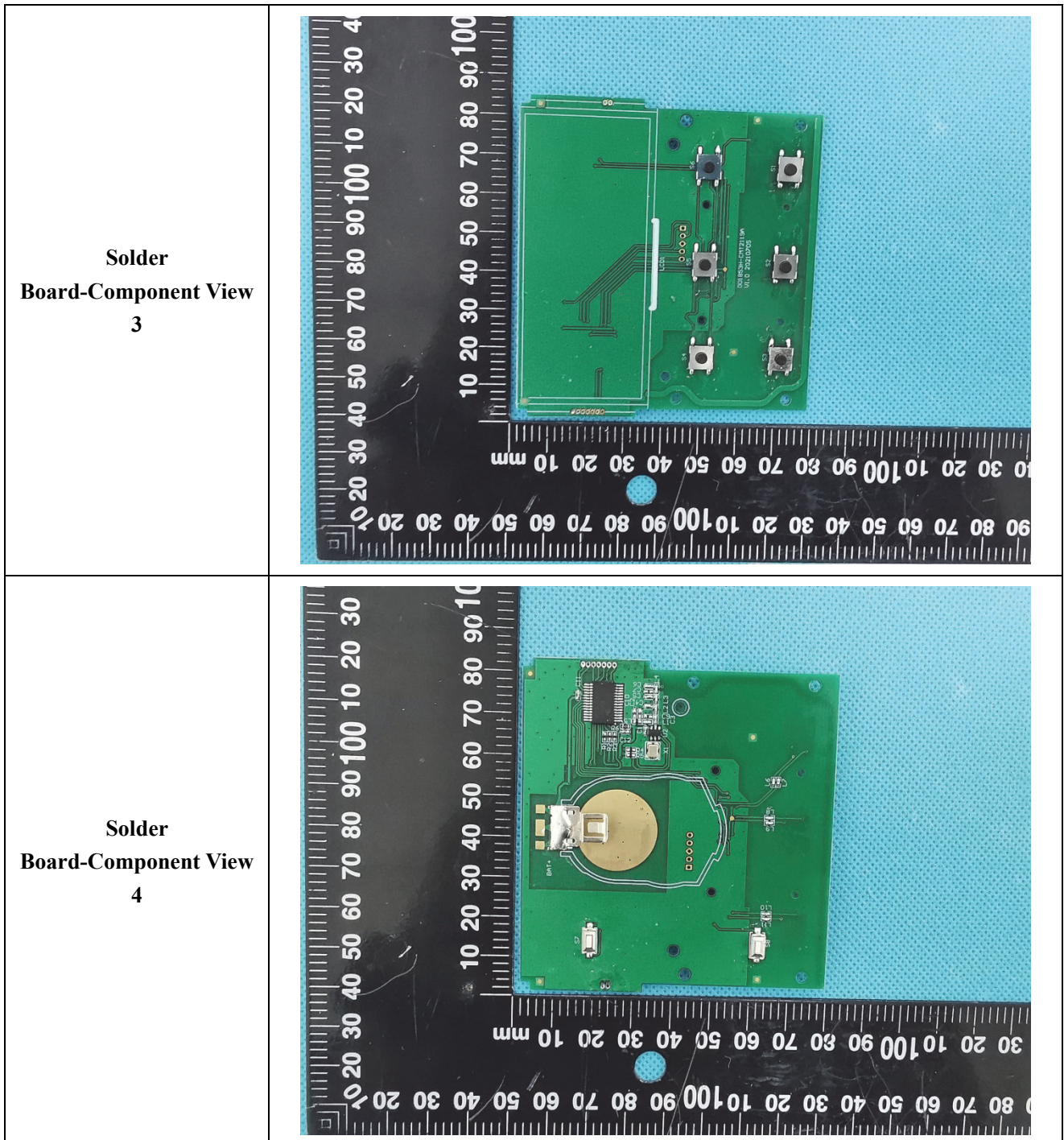


### EXHIBIT 3 - EUT INTERNAL PHOTOGRAPHS

<p><b>EUT Housing and Board View 1</b></p>	
<p><b>EUT Housing and Board View 2</b></p>	

<p style="text-align: center;"><b>Solder Board-Component View 1</b></p>	 <p>A photograph of a green printed circuit board (PCB) component, labeled 'Solder Board-Component View 1'. The board is rectangular and features a large, dark, rectangular LCD screen at the top. Below the screen, there are several electronic components, including a central microcontroller or processor, and several smaller components. The board is placed on a blue textured surface. A black ruler with white markings is positioned to the left and bottom of the board, showing measurements in millimeters. The ruler indicates the board is approximately 100 mm wide and 100 mm high.</p>
<p style="text-align: center;"><b>Solder Board-Component View 2</b></p>	 <p>A photograph of the same green PCB component, labeled 'Solder Board-Component View 2'. This view shows the reverse side of the board. A large, circular gold-colored pad is visible in the center, with a small component mounted on it. To the right, there is a complex arrangement of components, including a microcontroller and various passive components. The board is placed on a blue textured surface. A black ruler with white markings is positioned to the left and bottom of the board, showing measurements in millimeters. The ruler indicates the board is approximately 100 mm wide and 100 mm high.</p>



Antenna View

