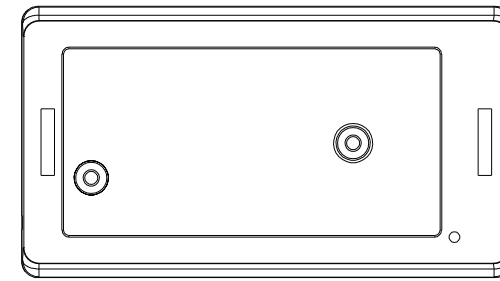


## SAFETY NOTE

- 1, This appliance can be used by children aged from 8 years and above and persons with reduced physical, sensory or mental capabilities or lack of experience and knowledge if they have been given supervision or instruction concerning use of the appliance in a safe way and understand the hazards involved.
- 2, Children shall not play with the appliance.
- 3, Cleaning and user maintenance shall not be made by children without supervision.
- 4, If the supply cord is damaged, it must be replaced by the manufacturer, its service agent or similarly qualified persons in order to avoid a hazard.
- 5, **WARNING:** the drive shall be disconnected from its power source during cleaning, maintenance and when replacing parts.
- 6, The instructions shall state that the A-weighted emission sound pressure level of the drive is equal to or less than 70 dB(A), e.g. by writing  $L_{pA} \leq 70 \text{ dB(A)}$ .
- 7, The mass and the dimension of the driven part shall be compatible with the rated torque and rated operating time.
- 8, The type of driven part the drive is intended for.
- 9, **WARNING:** Important safety instructions. It is important for the safety of persons to follow these instructions. Save these instructions.
- 10, Do not allow children to play with fixed controls. Keep remote controls away from children
- 11, Frequently examine the installation for imbalance and signs of wear or damage to cables and springs. Do not use if repair or adjustment is necessary
- 12, Watch the moving shutter and keep people away until he shutter is completely closed
- 13, **WARNING:** Important safety instructions. Follow all instructions, since incorrect installation can lead to severe injury.
- 14, Before installing the drive, remove any unnecessary cords and disable any equipment not needed for powered operation



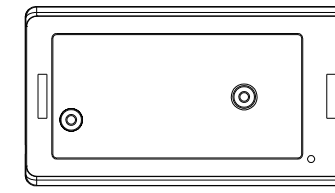
# Venetian Blinds Motor- DV50CE/S Specification



(A-01)

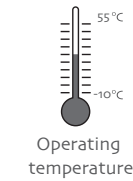
### Product introduction

One motor maximum can store 10 channels, over 10 channels, if still need add new channels, it will be repeating covered in turn from second channel.



### Product features:

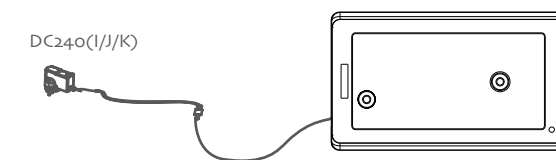
- Electronic Limit
- Memorized Settings
- Preferred Stop Position
- Stall Protection
- Low Power Consumption, Suitable for External Battery Power
- Built-in Receiver
- Jog & Tilt
- Switch Direction
- Program Button
- Unpair Single Emitter



Parameters (More models and parameters are subject to the nameplate)

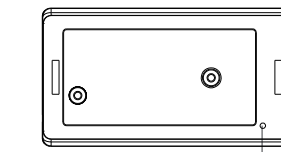
Type	DV50CE/S-1N/12r
Rated Torque(N.m)	1N.m
Rated Speed(RPM)	12RPM
Rated Voltage(V)	12V
Rated Current(A)	1A
Rated Power(W)	12W
Emission Frequency(MHz)	433.925MHz

### Charging instructions

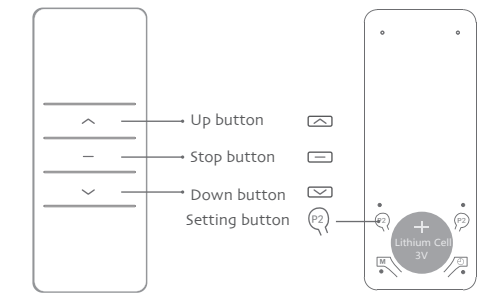


Note: The motor DV50CE/S can be charged by both the power adapter DC240(I/J/K) or the 12V supply electricity.

### Button specification



Motor setting button(P1)



### Operation note

Please read the following precautions before use:

1. Not operating under low voltage motors:  
Motor stop running when the supply voltage is lower than 8.5V, and it will restart again when the voltage is greater than 8.5V.
2. Operating:  
① The valid interval of the emitter button is 10s, the emitter will quit the set after 10s;  
② The motor will run for hint, please do the next step after the hint.
3. Set limit position:  
① After the up/down limit position setting, and the up/down limit position can't at the same position;  
② After limit setting, with power off and memory function;  
③ Into the match-code status 2 minutes later, it will quit out the setting limits status automatically;  
④ It will delete every memory and restore the factory settings.
4. When the motor running without any operation, the maximum running time is 6 minutes, it will stop automatically.
5. If the emitter lost, please setting up again with new emitter.



# Venetian Blinds Motor- DV50CE/S Specification

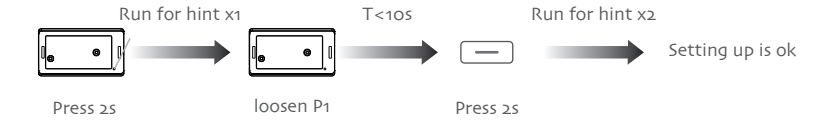


(A-01)

## FACTORY MODE

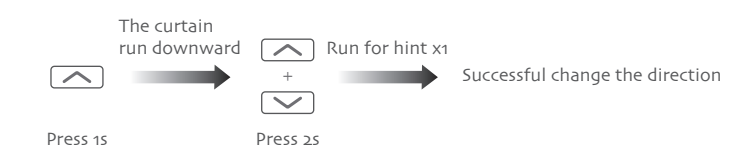
### 1 Setting up

If you need to reverse the rotation of the motor controlled by the emitter, please run the reverse of direction setting



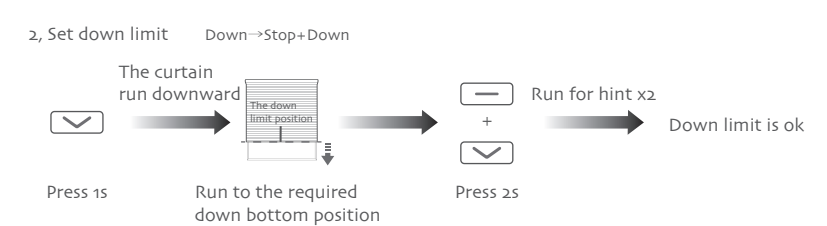
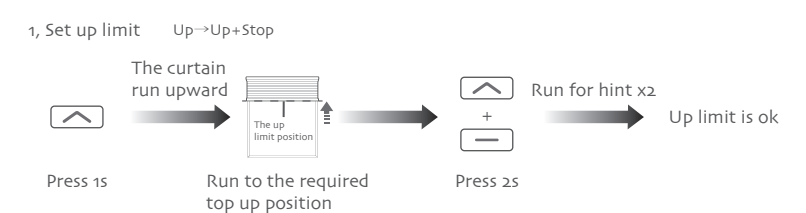
Note: If not within 10s to be on the code emitter or no legal STOP button code, 10s limit to time, will automatically exit the setting up mode; After the success of the code will delete the original limit settings and motor running mode speed settings, restore the factory value.

### 2 Switch direction



Note: After the success of the reversing, retain all motor original settings.

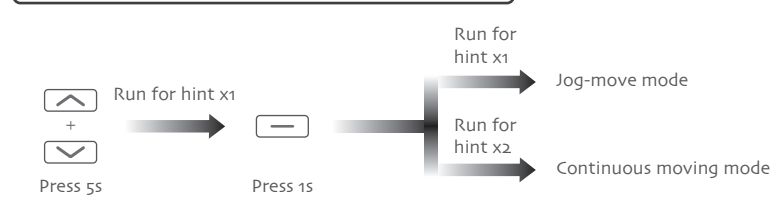
### 3 Limit position setting



Note: If the trip setting is not completed, the limit setting mode is exited; if you already have a limit, you will continue to use the pre-set limit; After setting up the up and down limit into user mode.

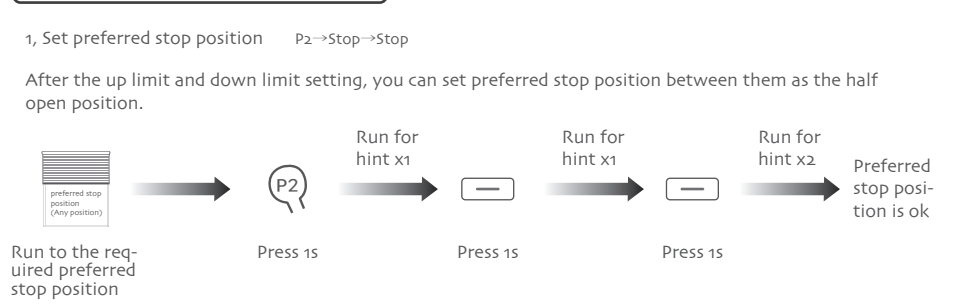
## USER MODE

### 1 Jog-move/Continuous moving mode switch

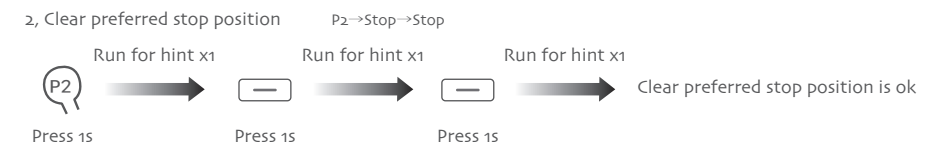


Note: In the jog-move mode, short press up/down button 2s to loosen, the motor is jog-move to run; if long press more than 2s, the motor run continuously, release the button, the motor stops running; In the continuous moving mode, long press up/down button, the motor runs continuously, release the button, the motor stops running.

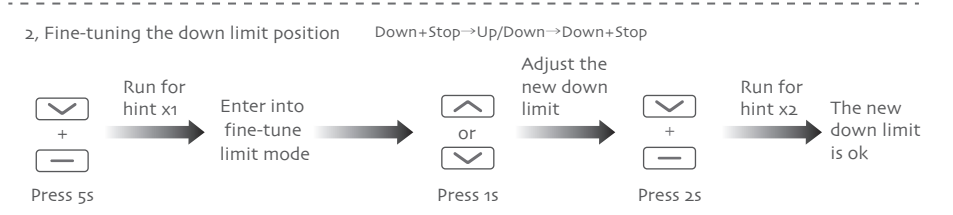
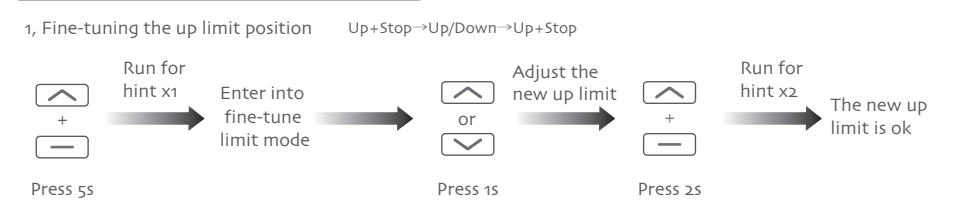
### 2 Preferred stop position setting



Note: Continuous moving mode, long press stop button, the curtain run directly from the current position to preferred stop position (Apply to the shade); Jog-move mode, long press stop button, the motor will first run to the down limit position, then run to preferred stop position (Apply to venetian blinds).

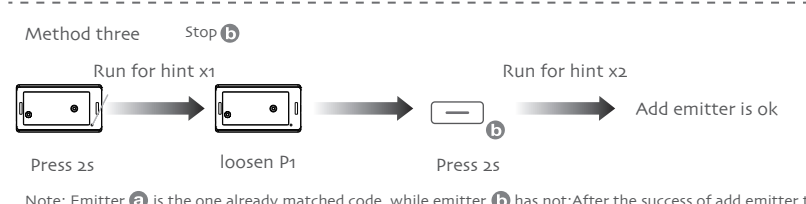
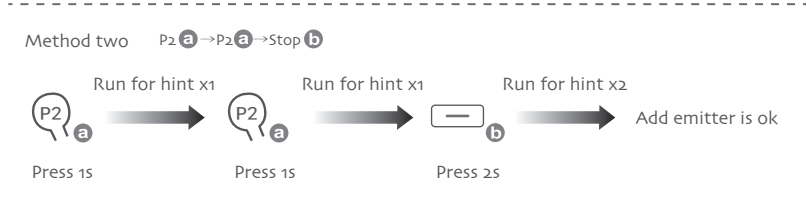


### 3 Fine-tuning up/down limit position



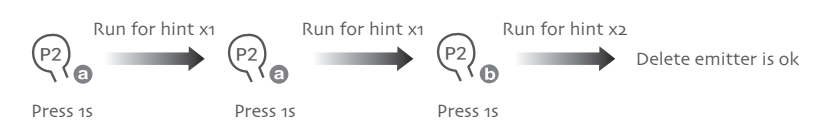
Note: After entering fine-tuning mode, will not delete the original preferred stop position; if no button operation within 2 minutes, 2 minutes to the limit, the motor will be prompted to turn and automatically exit the limit fine-tuning mode; After fine-tuning the up/down limit position can not be in the same position.

### 4 Add Emitter



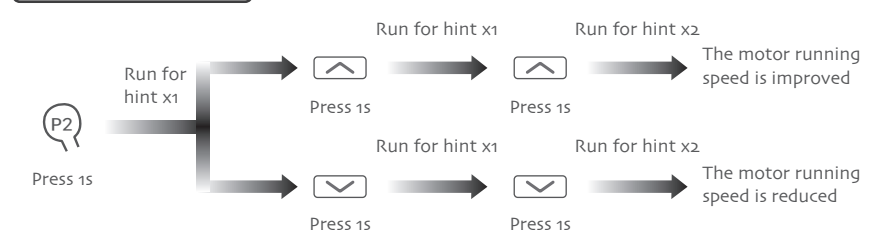
Note: Emitter a is the one already matched code, while emitter b has not; After the success of add emitter to retain all the settings of the original motor.

### 5 Delete emitter



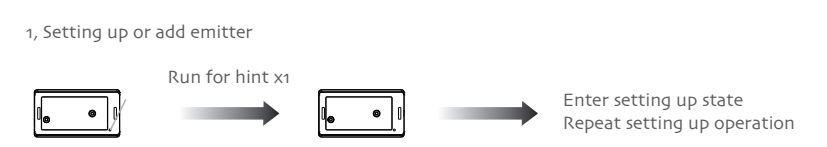
Note: a b are all of the code emitters, this method only can delete the emitter b not the emitter a; After the success of delete emitter to retain all the settings of the original motor (The limit is reserved for previous settings).

### 6 Speed Regulation

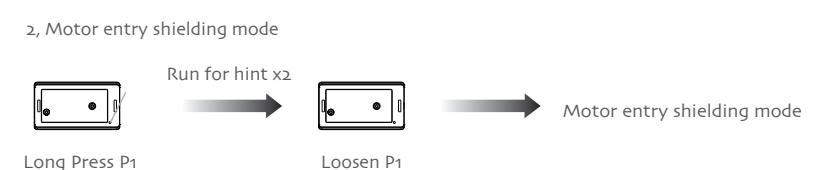


Note: If motor without run for hint, indicating that the motor has reached the maximum or minimum value; The motor speed in continuous moving mode has 3 levels, 10r/min, 15r/min, 20r/min, The factory defaults to the slowest speed.

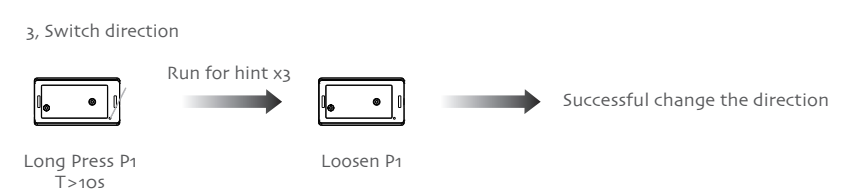
## P1 BUTTON OPERATION



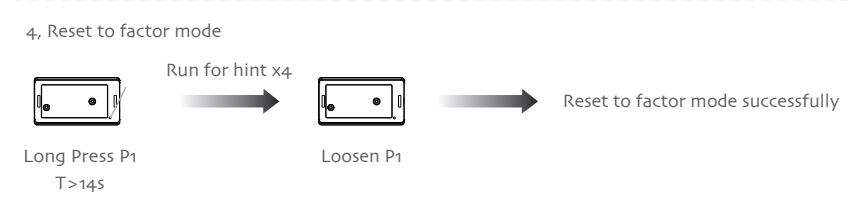
Note: If in the factory mode, enter the setting up state; If in user mode, enter add emitter status.



Note: Motor into the shield mode, save the previous function settings and transmitter code, turn off the wireless receive function (short press P1 can be restored)



Note: After the success of the reversing, retain all motor original settings.



Note: After the Reset to factor mode, will delete all previous system function setting and the emitter code.

## FAULT AND SOLUTION

NUMBER	PHENOMENON	REASON	PROCESSING METHOD
1	The motor is not running	a, he emitter is not matched. b, If press P1 button for a long time while with no reaction. May be the power is short-circuit or the cirailt board or the motor is broken.	a, Setting up the match code b, Contact after-sales service

#### FCC Statement

Any Changes or modifications not expressly approved by the party responsible for compliance could void the user's authority to operate the equipment.

This device complies with part 15 of the FCC Rules. Operation is subject to the following two conditions:(1) This device may not cause harmful interference, and (2) This device must accept any interference received, including interference that may cause undesired operation.

#### ISED RSS Warning:

This device complies with Innovation, Science and Economic Development Canada licence-exempt RSS standard(s). Operation is subject to the following two conditions: (1) this device may not cause interference, and (2) this device must accept any interference, including interference that may cause undesired operation of the device.

Le présent appareil est conforme aux CNR d'ISED applicables aux appareils radio exempts de licence. L'exploitation est autorisée aux deux conditions suivantes: (1) l'appareil ne doit pas produire de brouillage, et (2) l'utilisateur de l'appareil doit accepter tout brouillage radioélectrique subi, même si le brouillage est susceptible d'en compromettre le fonctionnement.

#### ISED RF exposure statement:

This equipment complies with ISED radiation exposure limits set forth for an uncontrolled environment. This equipment should be installed and operated with minimum distance 20cm between the radiator& your body.This transmitter must not be co-located or operating in conjunction with any other antenna or transmitter. Le rayonnement de la classe b respecte ISED fixaient un environnement non contrôlés.Installation et mise en œuvre de ce matériel devrait avec échangeur distance minimale entre 20 cm ton corps.Lanceurs ou ne peuvent pas coexister cette antenne ou capteurs avec d'autres.

Note: This equipment has been tested and found to comply with the limits for a Class B digital device, pursuant to part 15 of the FCC Rules. These limits are designed to provide reasonable protection against harmful interference in a residential installation. This equipment generates, uses and can radiate radio frequency energy and, if not installed and used in accordance with the instructions, may cause harmful interference to radio communications. However, there is no guarantee that interference will not occur in a particular installation. If this equipment does cause harmful interference to radio or television reception, which can be determined by turning the equipment off and on, the user is encouraged to try to correct the interference by one or more of the following measures:

—Reorient or relocate the receiving antenna.

—Increase the separation between the equipment and receiver.

—Connect the equipment into an outlet on a circuit different from that to which the receiver is connected. —Consult the dealer or an experienced radio/TV technician for help.