

Declarations

U.S. Radio Frequency FCC Compliance

This device complies with Part 15 of the FCC Rules. Operation is subject to the following two conditions:

- (1) This device may not cause harmful interference, and
- (2) This device must accept any interference received, including interference that may cause undesired operation.

This equipment has been tested and found to comply with the limits for a Class B digital device, pursuant to Part 15 of the FCC Rules. These limits are designed to provide reasonable protection against harmful interference in a residential installation. This equipment generates, uses, and can radiate radio frequency energy and, if not installed and used in accordance with the instructions, may cause harmful interference to radio communications. However, there is no guarantee that interference will not occur in a particular installation. If this equipment does cause harmful interference to radio or television reception, which can be determined by turning the equipment off and on, the user is encouraged to try to correct the interference by one or more of the following measures:

- Reorient or relocate the receiving antenna.
- Increase the separation between the equipment and receiver.
- Connect the equipment into an outlet on a circuit different from that to which the receiver is connected.
- Consult the dealer or an experienced radio/TV technician for help.

Any Changes or modifications not expressly approved by the party responsible for compliance could void the user's authority to operate the equipment.

ISED RSS Warning:

This device complies with Innovation, Science and Economic Development Canada licence-exempt RSS standard(s). Operation is subject to the following two conditions: (1) this device may not cause interference, and (2) this device must accept any interference, including interference that may cause undesired operation of the device. Le présent appareil est conforme aux CNR d'ISED applicables aux appareils radio exempts de licence. L'exploitation est autorisée aux deux conditions suivantes: (1) l'appareil ne doit pas produire de brouillage, et (2) l'utilisateur de l'appareil doit accepter tout brouillage radioélectrique subi, même si le brouillage est susceptible d'en compromettre le fonctionnement.

Quick Index

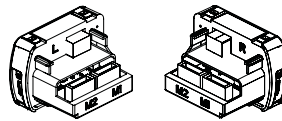
Settings	Steps
1 Pairing	P1 (hold down for 2s) > Stop (hold down for 2s)
2 Switch Rotating Direction	Up + Down (hold down for 2s)
3 Setting Upper & Lower Limits	Upper Limit: Up (hold down for 2s) > Up + Stop (hold down for 2s) Lower Limit: Down (hold down for 2s) > Down + Stop (hold down for 2s)
4 Add / Remove Favorite Position	P2 > Stop > Stop
5 Roller Mode & Sheer Mode Switch	Up + Down (hold down for 5s) > Stop
6 Adjust Limits	Upper Limit: Up + Stop (hold down for 5s) > Up or Down > Up + Stop (hold down for 2s) Lower Limit: Down + Stop (hold down for 5s) > Up or Down > Down + Stop (hold down for 2s)
7 Pair / Unpair Additional Emitter	P2 (existing) > P2 (existing) > P2 (new)
8 Speed Regulation	Acceleration: P2 > Up > Up Deceleration: P2 > Down > Down

Troubleshooting

Issues	Possible Causes	Solution
The motor is not responding	External battery pack is depleted	Recharge with compatible AC adaptor and check connection and positioning of solar PV panel
	Insufficient charging from Solar PV Panel	Check connection and orientation of solar PV panel
	Remote control battery is discharged	Replace battery
	Battery is inserted incorrectly into remote control	Check battery polarity
	Radio interference / shielding	Ensure remote control and the antenna on the motor are positioned away from metal objects
	Receiver is far away from Remote Control	Move remote control to a closer position
	Power failure	Check power supply to motor is connected and active
Cannot program a single motor (multiple motors respond)	Incorrect wiring	Check that wiring is connected correctly (refer to motor installation instructions)
	Multiple motors are paired to the same channel.	Always reserve an individual channel for programming functions SYSTEM BEST PRACTICE - Provide an extra 15 channel remote in your multi-motor projects that provides individual control for each motor for programming purposes Place all other motors into sleep mode (ref to P1 button instructions)



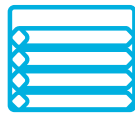
AMPTDBU RF Receiver



Fields of Application



Cellular/Honeycomb Standard



Cellular/Honeycomb Skylight



Cellular/Honeycomb TDBU



Cellular/Honeycomb Day/Night

Specifications

Working temperature: -10° C ~ +50° C

Radio Frequency: 433.925 MHz

Input Voltage: USB 5V 1A / USB 5V 2A

Maximum Running Time: 6 minutes

Attention

Never drop, knock, drill or submerge the motor.

Read all safety instructions before installation.

Incorrect installation can lead to serious injury and will void manufacturer's liability and warranty.



×



×



×

Safety Instructions

1. Do not expose motor to humid, damp, or extreme temperature conditions.
2. Do not drill into motor.
3. Do not cut the antenna. Keep it clear from metal objects.
4. Do not allow children to play with this device.
5. If the power cable or connector is damaged, do not use.
6. Ensure the correct crown and drive adaptor are used.
7. Ensure the power cable and aerial is clear and protected from moving parts.
8. Cable routed through walls should be properly isolated.
9. Motor is to be mounted in horizontal position only.
10. Before installation, remove unnecessary cords and disable equipment not needed for powered operation.
11. Installation and programming should be performed by a qualified professional. Use or modification outside the scope of these instructions may void warranty.



Do not dispose of in general waste. Please recycle batteries and damaged electrical products appropriately.

Please scan QR code to see more AMP™ product information



System Overview



Switch Functions

1. When the Switch is at Location 1, it is Cellular/Honeycomb TDBU and Cellular/Honeycomb Day/Night Shades working mode.
2. When the Switch move to Location ON, it is Cellular/Honeycomb Standard and Cellular/Honeycomb Skylight working mode.
3. The Factory default mode is setting at Location 1.

P1 Button Instructions

① Test Motor (Wakes and Runs)

Happening as you press for 1 second



Press P1
Less than 1 sec.

② Activate Pairing Mode

Happening as you press for 2 seconds



Press P1
Approx. 2 sec.

Until Shade: ↑↓ Jog x1

③ Sleep Mode

Happening as you press for 6 seconds



Press P1
Approx. 6 sec.

Until Shade: ↑↓ Jog x2

④ Reverse Motor 1 with Motor 2

Happening as you press for 10 seconds



Press P1
Approx. 10 sec.

Until Shade: ↑↓ Jog x3

⑤ Reset To Factory Settings

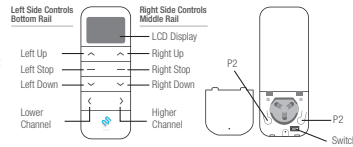
Happening as you press for 14 seconds



Press P1
Approx. 14 sec.

Until Shade: ↑↓ Jog x4

Button Instructions



Rechargeable Battery



Blinking red:
Low battery alert



Blinking green:
Charging in process



Solid green:
Battery has finished charging

Essential Settings

The steps in factory mode must be completed to ensure proper operation.

* All setup needs to be done using **LEFT SIDE** of the remote.

1. Pair / Unpair Remote Control

a. Press "**P1**" button (about 2 sec) on the End Cap as shown until motor jog x1.

Action on Remote Control



b. In the next 10 secs, press and hold **Left "Stop"** button on the remote control until motor jog x2.

Action on Remote Control



* Repeat the same procedure to unpair remote control.

2. Change Motor Direction (if necessary)

Press **Left "Up"** or **Left "Down"** button to check if the shade moves in the desired direction.

Action on Remote Control



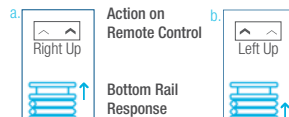
If you need to reverse the direction, press and hold (about 2 sec) **Left "Up"** and **"Down"** buttons simultaneously until motor jog x1.

3. Setting the Upper and Lower Limits

3.1 Set Upper Limit

a. Press **Right "Up"** button to raise the Middle Rail, then press **Right "Stop"** button when it is in the desired upper limit.

Action on Remote Control



b. Press **Left "Up"** button to raise the Bottom Rail, then press **Left "Stop"** button when it is in the desired upper limit.

Action on Remote Control



c. Press and hold (about 2 sec) **Left "Up"** and **Left "Stop"** buttons simultaneously until motor jog x2.

3.2 Set Lower Limit

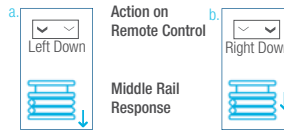
a. Press **Left "Down"** button to lower the Bottom Rail, then press **Left "Stop"** button when it is in the desired lower limit.

b. Press **Right "Down"** button to lower the Middle Rail, then press **Right "Stop"** button when it is in the desired lower limit.

c. Press and hold (about 2 sec) **Left "Down"** and **Left "Stop"** buttons simultaneously until motor jog x2.

*If you exit the limit setting status before you finish the limit settings, the motor will take the previous existing limits.

Action on Remote Control



Bottom Rail Response

Action on Remote Control



Motor Response

4. Adjust Limits

4.1 Adjust the Upper Limit

a. Press and hold (about 5 sec) **Left "Up"** and **Left "Stop"** buttons simultaneously until motor jog x1.

b. Press **Right "Up"** button to raise the Middle Rail, then press **Right "Stop"** button when it is in the new desired upper limit.

c. Press **Left "Up"** button to raise the Bottom Rail, then press **Left "Stop"** button when it is in the new desired upper limit.

d. Press and hold (about 2 sec) **Left "Up"** and **Left "Stop"** buttons simultaneously until motor jog x2.

Action on Remote Control



Action on Remote Control



Middle Rail Response

Action on Remote Control



Motor Response

4.2 Adjust the Lower Limit

a. Press and hold (about 5 sec) **Left "Down"** and **Left "Stop"** buttons simultaneously until motor jog x1.

b. Use **Left "Down"** button to lower the Bottom Rail then press **Left "Stop"** button when it is in the new desired lower limit.

c. Press **Right "Down"** button to lower the Middle Rail, then press **Right "Stop"** button when it is in the new desired lower limit.

d. Press and hold (about 2 sec) **Left "Down"** and **Left "Stop"** buttons simultaneously until motor jog x2.

Action on Remote Control



Action on Remote Control



Bottom Rail Response

Action on Remote Control



Motor Response

5. Favorite Position

5.1 Set Favorite Position

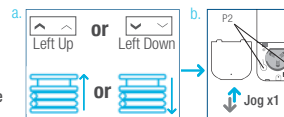
a. Use **Left "Up"** or **Left "Down"** button to move the shade to desired Favorite position.

b. Press one "**P2**" button on the back of remote control until motor jog x1.

c. Press and hold **Left "Stop"** button until motor jog x1.

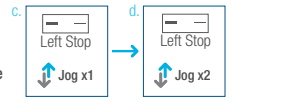
d. Once more, press and hold (about 2 sec) **Left "Stop"** button until motor jog x2.

Action on Remote Control



Motor Response

Action on Remote Control

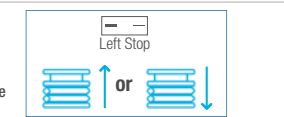


Motor Response

5.2 Send Shade to Favorite Position

Press and hold (about 2 sec) **Left "Stop"** button, motor will move to Favorite position.

Action on Remote Control



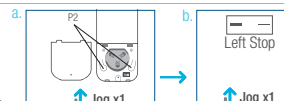
5.3 Delete Favorite Position

a. Press one "**P2**" button until motor jog.

b. Press and hold **Left "Stop"** button until motor jog.

c. Once more, press and hold **Left "Stop"** button until motor jog x1.

Action on Remote Control



Motor Response

Action on Remote Control



Motor Response

6. Roller Mode and Sheer Mode

6.1 Roller Shade Mode - continue movement after a short press - Default Mode

a. Press and hold (about 5 sec) **Left "Up"** and **Left "Down"** buttons simultaneously until motor jog x1.

b. Press and hold (about 2 sec) **Left "Stop"** button until motor jog x2.

Action on Remote Control



Motor Response

Action on Remote Control



Motor Response

6.2 Sheer Shade Mode - jog movement after a short press (continue movement after a long press)

a. Press and hold (about 5 sec) **Left "Up"** and **Left "Down"** buttons simultaneously until motor jog x1.

b. Press and hold (about 2 sec) **Left "Stop"** button until motor jog x1.

Action on Remote Control



Motor Response

Action on Remote Control



Motor Response

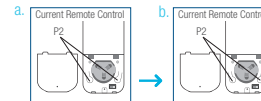
7. Add or Remove Additional Remote

7.1 Using Current Remote Control

a. On the **current** remote control, press one "**P2**" button until motor jog x1.

b. Once more, on the **current** remote control, press one "**P2**" button until motor jog x1.

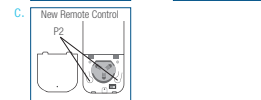
Action on Remote Control



Motor Response

c. On the **New** remote control, press one "**P2**" button until motor jog x2.

Action on Remote Control



Motor Response

*Repeat the same procedure to remove additional remote control.

7.2 New Remote Control

Follow instructions under the section 1. **Pair / Unpair Remote Control**

8. Adjust Motor Speed

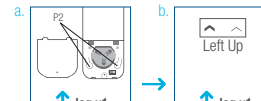
8.1 Acceleration Speed

a. Press one "**P2**" button until motor jog x1.

b. Press **Left "Up"** button until motor jog x1.

c. Once more, press **Left "Up"** button until motor jog x2.

Action on Remote Control



Motor Response

Action on Remote Control



Motor Response

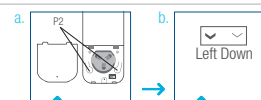
8.2 Deceleration Speed

a. Press one "**P2**" button until motor jog x1.

b. Press **Left "Down"** button until motor jog x1.

c. Once more, press **Left "Down"** button until motor jog x2.

Action on Remote Control



Motor Response

Action on Remote Control



Motor Response

*If the motor has no response, it already has a Maximum or Minimum speed.