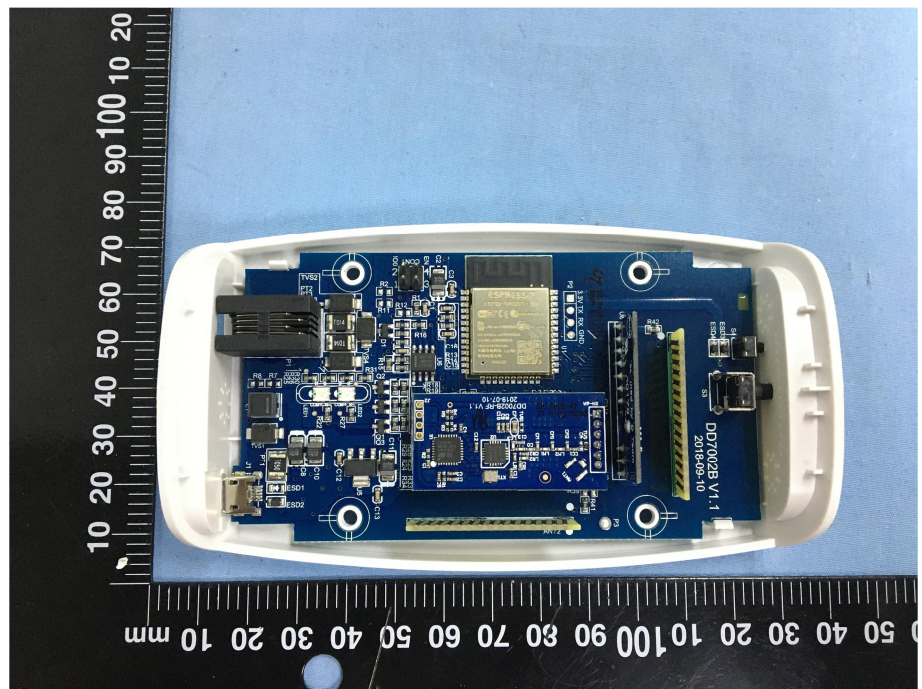


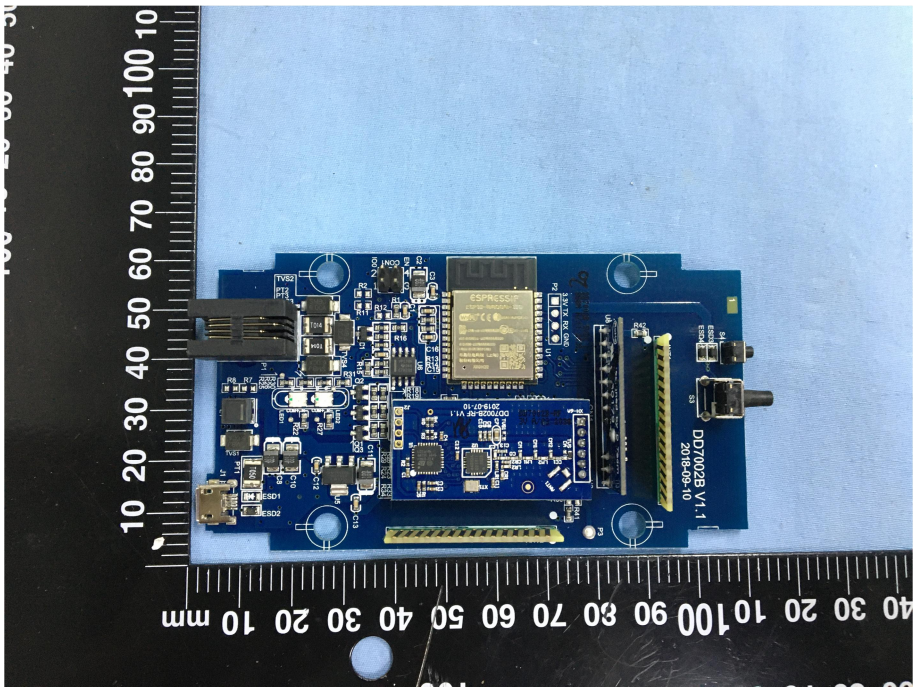
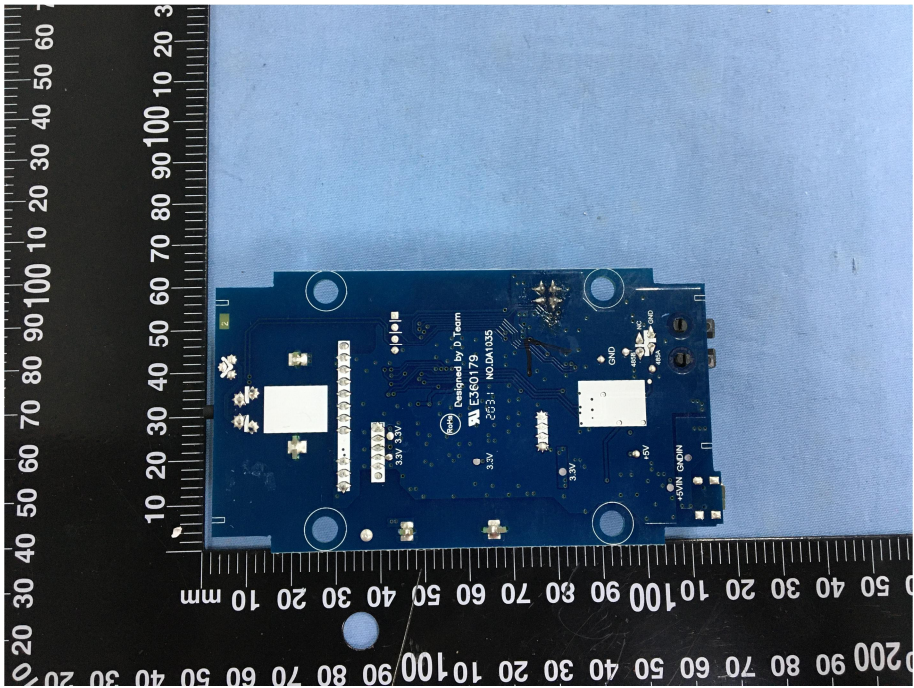
### EXHIBIT 3 - EUT INTERNAL PHOTOGRAPHS

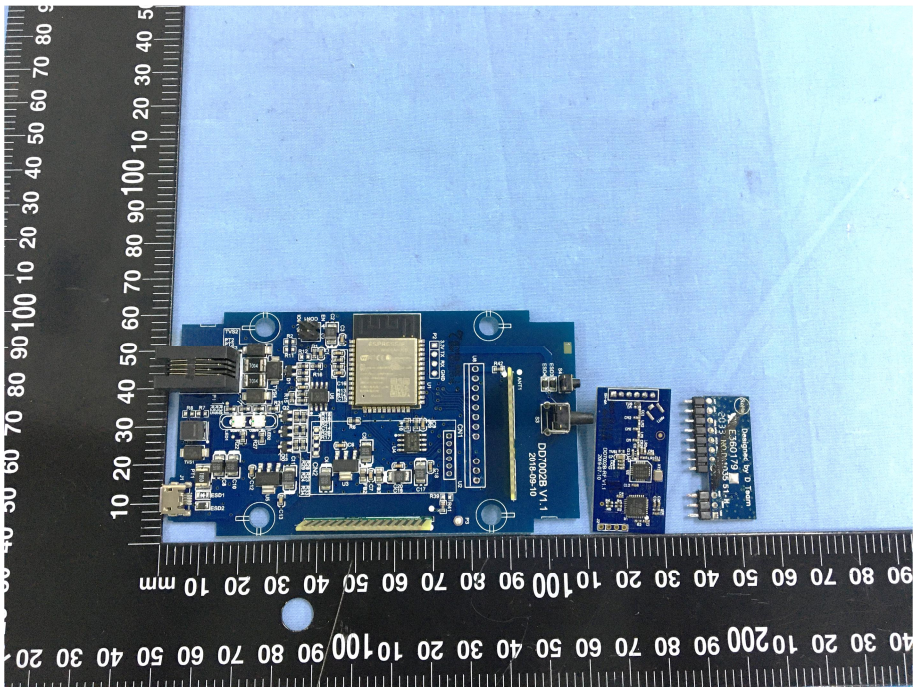
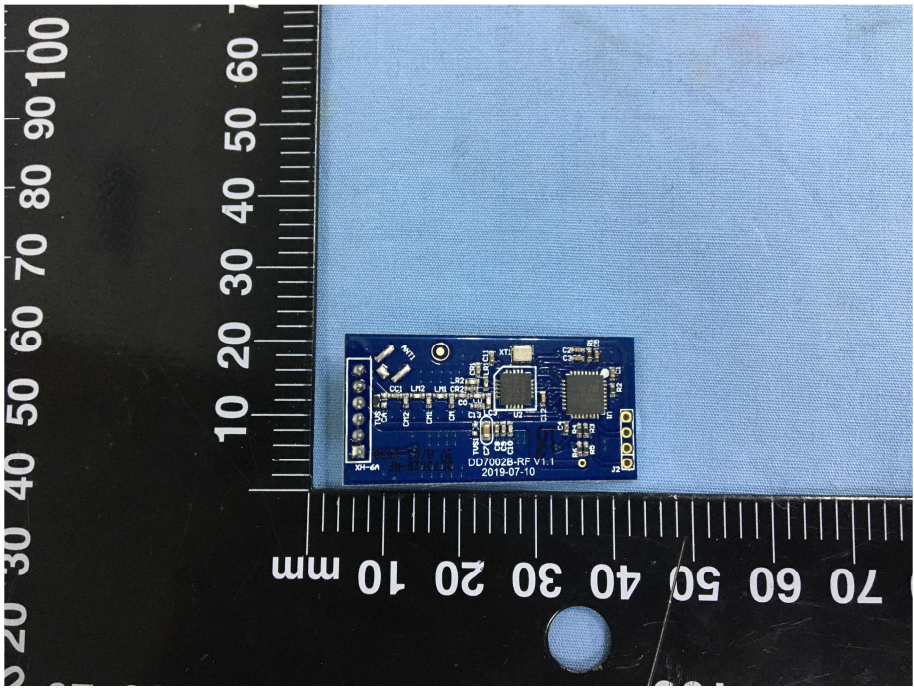
**EUT Housing and Board  
View 1**



**EUT Housing and Board  
View 2**



<p style="text-align: center;"><b>Solder Board-Component View 1</b></p>	 A photograph of a blue printed circuit board (PCB) with various electronic components. A black ruler is placed vertically to the left of the board, showing measurements in millimeters from 0 to 100. The board features an ESPRESSO system-on-chip, several capacitors, and a USB connector. Text on the board includes "DD7002E V1.1" and "2018-09-10".
<p style="text-align: center;"><b>Solder Board-Component View 2</b></p>	 A photograph of the reverse side of the blue PCB. A black ruler is placed vertically to the left, showing measurements from 0 to 100 mm. The board has several large white components, likely heat sinks or capacitors, and various surface-mount components. Text on the board includes "Designed by D Team", "E360179", "2018-09-10", "NOJAM035", "3.3V 3.3V", and "+5VIN GNDIN".

<p style="text-align: center;"><b>Solder Board-Component View 3</b></p>	 A photograph showing a blue printed circuit board (PCB) assembly with various electronic components. The board is labeled "DD7002B V1.1" and "2019-07-10". It is placed on a black ruler for scale. The ruler shows measurements in millimeters, with the board's length being approximately 100 mm. The board features a large central chip, several smaller components, and a connector on the left side.
<p style="text-align: center;"><b>Solder Board-Component View 4</b></p>	 A photograph showing a smaller blue PCB assembly, labeled "DD7002B-RF V1.1" and "2019-07-10". It is placed on a black ruler for scale. The ruler shows measurements in millimeters, with the board's length being approximately 40 mm. The board features a central chip, several smaller components, and a connector on the right side.