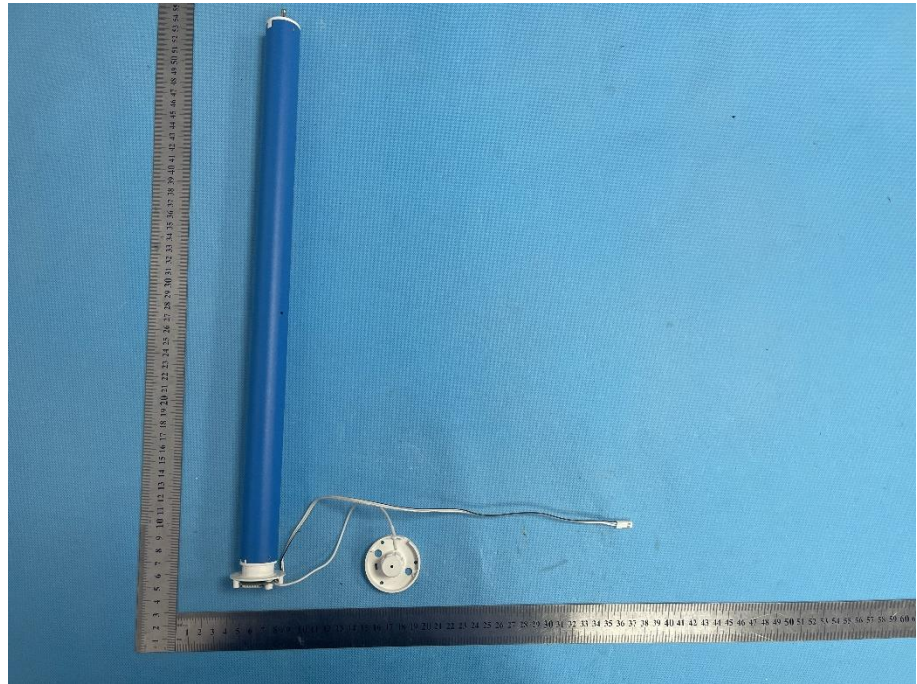
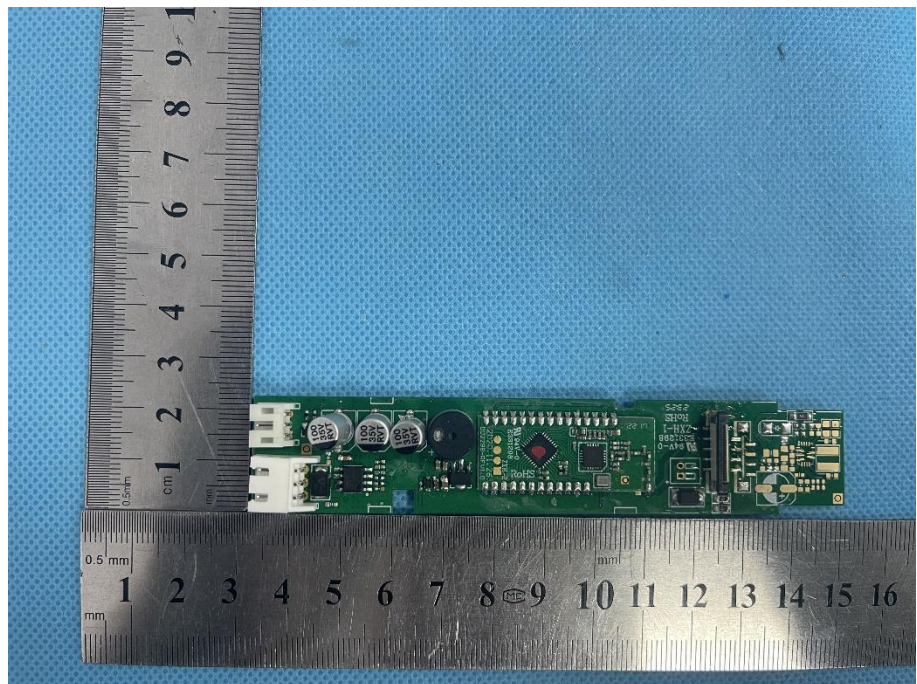


### EXHIBIT 3 - EUT INTERNAL PHOTOGRAPHS

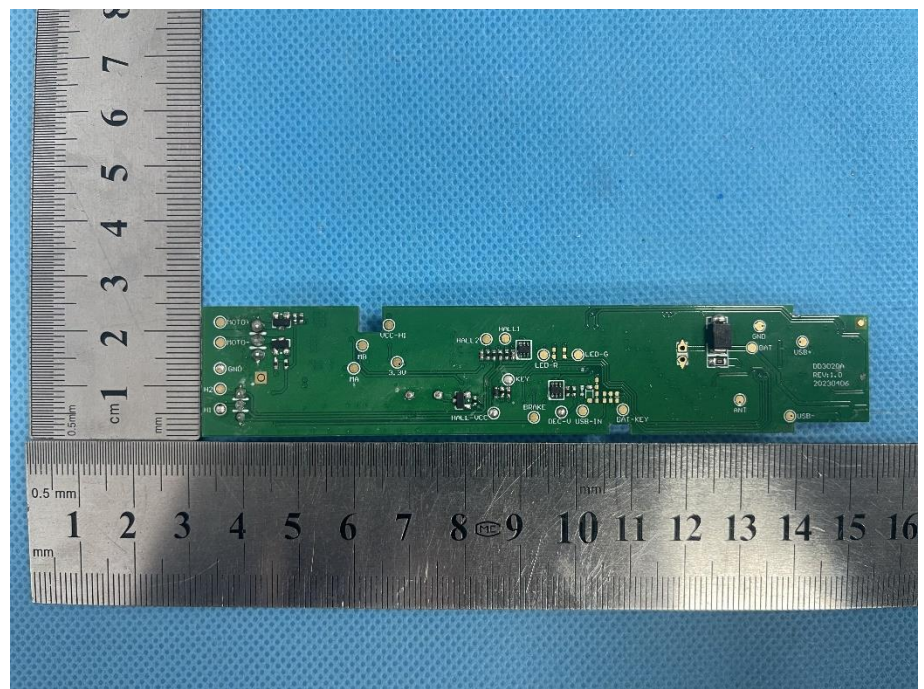
**EUT Housing and Board View 1**



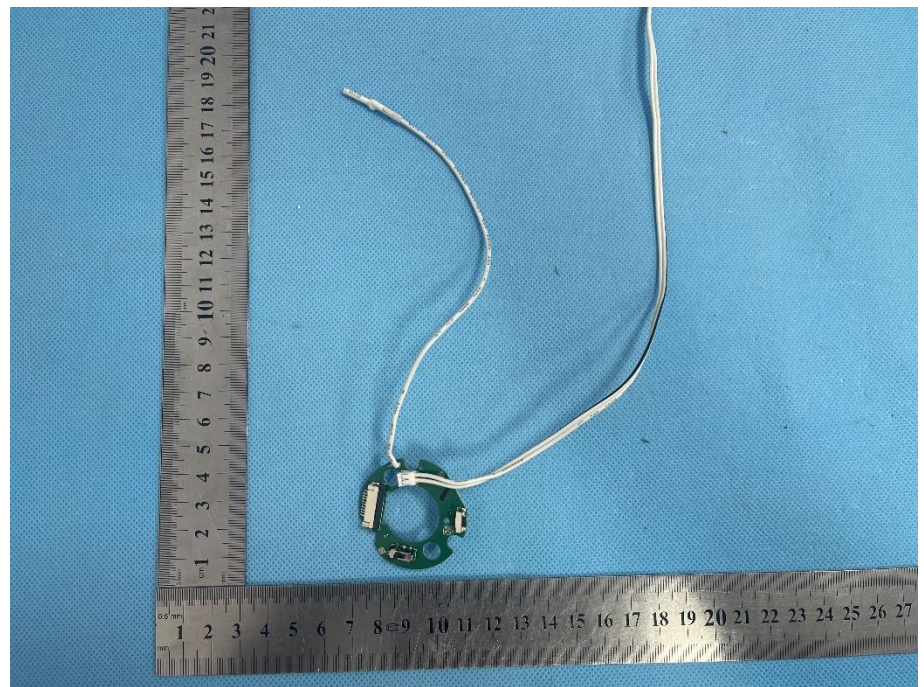
**Solder Board-Component View 1**

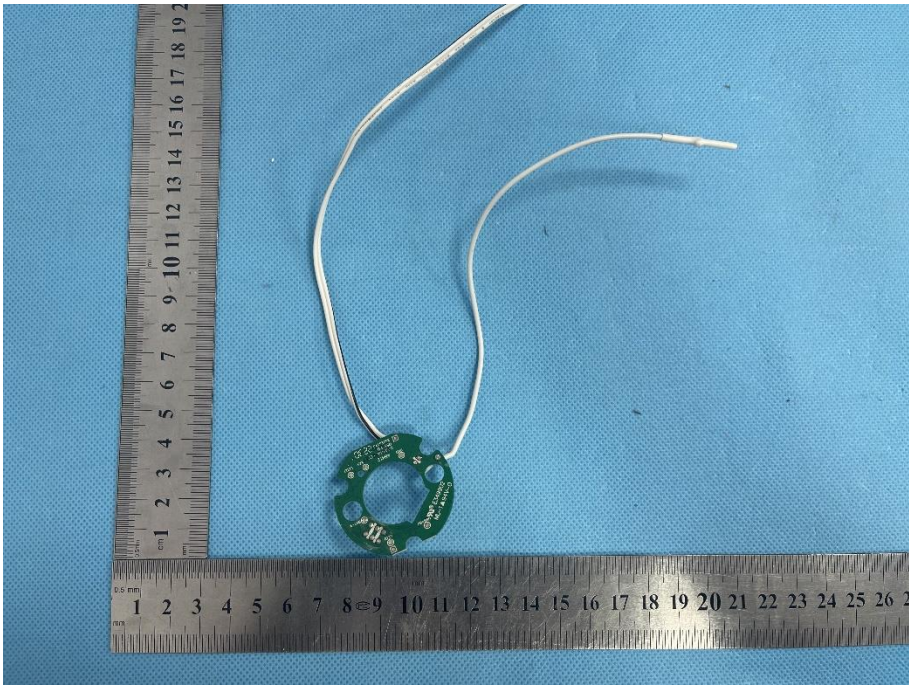
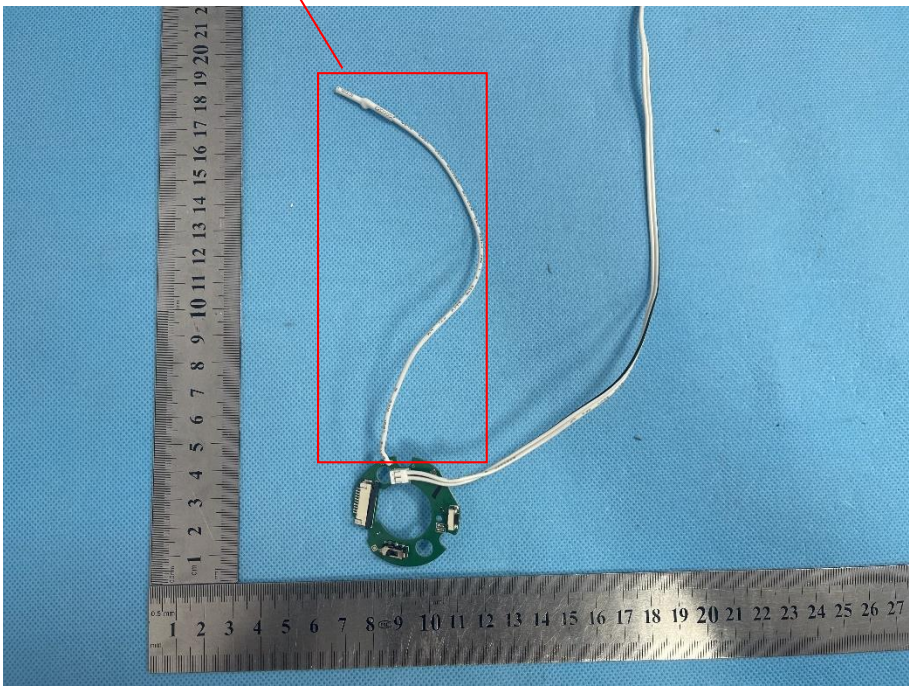


**Solder  
Board-Component  
View 2**



**Solder  
Board-Component  
View 3**



<p><b>Solder Board-Component View 4</b></p>	 <p>A photograph showing a green circular PCB component with a white antenna wire attached. The component is placed on a blue fabric surface next to a metal ruler for scale. The ruler shows centimeter markings from 1 to 20 and millimeter markings from 1 to 26. The antenna wire is curved upwards and to the right.</p>
<p><b>Antenna View</b></p>	<p>433 Antenna</p>  <p>A photograph showing the same green circular PCB component and white antenna wire as in the previous view. A red rectangular box highlights the antenna wire, and a red arrow points from the text '433 Antenna' to the box. The component is placed on a blue fabric surface next to a metal ruler for scale. The ruler shows centimeter markings from 1 to 20 and millimeter markings from 1 to 27.</p>