

Declarations

U.S. Radio Frequency FCC Compliance

This device complies with Part 15 of the FCC Rules. Operation is subject to the following two conditions:

- (1) This device may not cause harmful interference, and
- (2) This device must accept any interference received, including interference that may cause undesired operation.

This equipment has been tested and found to comply with the limits for a Class B digital device, pursuant to Part 15 of the FCC Rules. These limits are designed to provide reasonable protection against harmful interference in a residential installation. This equipment generates, uses, and can radiate radio frequency energy and, if not installed and used in accordance with the instructions, may cause harmful interference to radio communications. However, there is no guarantee that interference will not occur in a particular installation. If this equipment does cause harmful interference to radio or television reception, which can be determined by turning the equipment off and on, the user is encouraged to try to correct the interference by one or more of the following measures:

- Reorient or relocate the receiving antenna.
- Increase the separation between the equipment and receiver.
- Connect the equipment into an outlet on a circuit different from that to which the receiver is connected.
- Consult the dealer or an experienced radio/TV technician for help.

Any Changes or modifications not expressly approved by the party responsible for compliance could void the user's authority to operate the equipment.

ISED RSS Warning:

This device complies with Innovation, Science and Economic Development Canada licence-exempt RSS standard(s). Operation is subject to the following two conditions: (1) this device may not cause interference, and (2) this device must accept any interference, including interference that may cause undesired operation of the device. Le présent appareil est conforme aux CNR d'ISED applicables aux appareils radio exempts de licence. L'exploitation est autorisée aux deux conditions suivantes: (1) l'appareil ne doit pas produire de brouillage, et (2) l'utilisateur de l'appareil doit accepter tout brouillage radioélectrique subi, même si le brouillage est susceptible d'en compromettre le fonctionnement.

Quick Index

Settings	Steps
1 Pairing	P1 (hold down for 2s) > Stop (hold down for 2s)
2 Switch Rotating Direction	Up + Down (hold down for 2s)
3 Setting Upper & Lower Limits	Upper Limit: Up (hold down for 2s) > Up + Stop (hold down for 2s) Lower Limit: Down (hold down for 2s) > Down + Stop (hold down for 2s)
4 Add / Remove Favorite Position	P2 > Stop > Stop
5 Roller Mode & Sheer Mode Switch	Up + Down (hold down for 5s) > Stop
6 Adjust Limits	Upper Limit: Up + Stop (hold down for 5s) > Up or Down > Up + Stop (hold down for 2s) Lower Limit: Down + Stop (hold down for 5s) > Up or Down > Down + Stop (hold down for 2s)
7 Pair / Unpair Additional Emitter	P2 (existing) > P2 (existing) > P2 (new)
8 Speed Regulation	Acceleration: P2 > Up > Up Deceleration: P2 > Down > Down

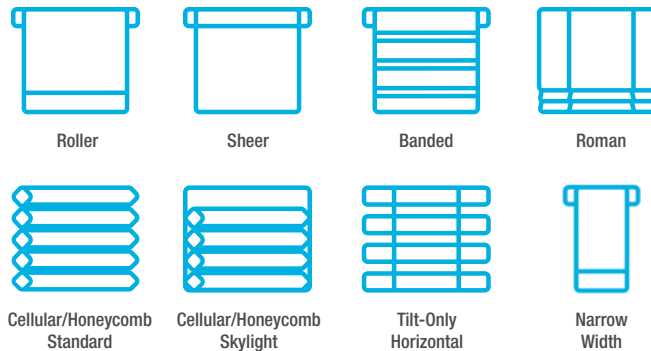
Troubleshooting

Issues	Possible Causes	Solution
The motor has no response	Battery in motor is depleted	Recharge with compatible AC adaptor and check connection and positioning of solar PV panel
	Insufficient charging from Solar PV Panel	Check connection and orientation of solar PV panel
	Wall switch battery is discharged	Replace battery
	Battery is inserted incorrectly into wall switch	Check battery polarity
	Radio interference / shielding	Ensure wall switch and the antenna on the motor are positioned away from metal objects
	Receiver distance is too far from wall switch	Move wall switch to a closer position
Motor beeps 10 times when in use	Power failure	Check power supply to motor is connected and active
	Incorrect wiring	Check that wiring is connected correctly (refer to motor installation instructions)
Cannot program a single motor (multiple motors respond)	Battery voltage is low / PV (solar panel issue)	Recharge with AC adaptor or check connection and positioning of solar PV panel
	Multiple motors are paired to the same channel.	Always reserve an individual channel for programming functions SYSTEM BEST PRACTICE - Provide an extra 15 channel remote in your multi-motor projects that provides individual control for each motor for programming purposes Place all other motors into sleep mode (Press "P1" button (about 6 sec) on the motor head until motor jog x2 and beep x2).

AMP™ Wall Switch



Fields of Application



Specifications

Voltage	3V (AAA battery x 2)
Radio Frequency	433.92 MHz Bi-directional
Transmitting Power	10 milliwatt
Operating Temperature	14°F to 122°F (-10°C to 50°C)
RF Modulation	FSK
Lock Function	Yes
IP Rating	IP20
Transmission Distance	up to 200m (outdoor)

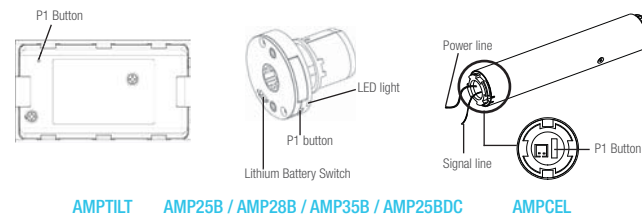
Safety Instructions

1. Do not expose motor to humid, damp, or extreme temperature conditions.
2. Do not drill into motor.
3. Do not cut the antenna. Keep it clear from metal objects.
4. Do not allow children to play with this device.
5. If the power cable or connector is damaged, do not use.
6. Ensure the correct crown and drive adaptor are used.
7. Ensure the power cable and aerial is clear and protected from moving parts.
8. Cable routed through walls should be properly isolated.
9. Motor is to be mounted in horizontal position only.
10. Before installation, remove unnecessary cords and disable equipment not needed for powered operation.
11. Installation and programming should be performed by a qualified professional. Use or modification outside the scope of these instructions may void warranty.

Do not dispose of in general waste. Please recycle batteries and damaged electrical products appropriately.

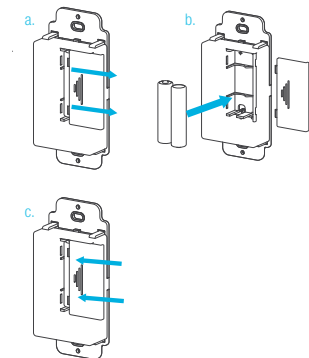
Please scan QR code to see more AMP™ product information

Button Instructions



Replace/Install Battery

- a. Gently take out the battery cover.
- b. Install 2 x AAA batteries with positive (+) side facing up.
- c. Gently assemble the battery cover back.

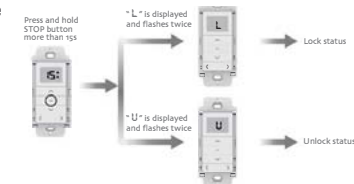


Advanced Setting - Disable Limit Setting

- a. Press and hold "Stop" button more than 15s, WS will show "L" (lock), WS is now in "Lock" mode and following commands are disabled:

- Change Motor Direction
- Setting the Upper and Lower Limit
- Adjust Limit
- Roller Mode or Sheer Mode

- b. Press and hold "Stop" button more than 15s, WS will show "U" (unlock) - back to unlock mode, you can assess all control functions.



*This advanced feature is intended to be used after all shade programming is completed. User Mode will prevent accidental or unintended changing of limits.



Do not dispose of in general waste. Please recycle batteries and damaged electrical products appropriately.

Please scan QR code to see more AMP™ product information



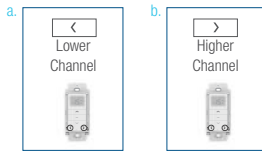
Channel Options

Select A Channel

- a. Press “-” button on the wall switch to select a lower channel.
- b. Press “+” button on the wall switch to select a higher channel.

Action on Wall Switch

Wall Switch Response

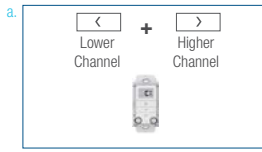


Hide Unused Channels

- a. Press and Hold (about 3 sec) “-” and “+” buttons simultaneously until wall switch displays “C” (channel).
- b. Press “-” or “+” button to select required quantity of channel (between 1 to 15).
- c. Press “Stop” button to confirm selection. The LED will display “o” (OK) once to confirm selection.

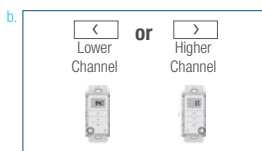
Action on Wall Switch

Wall Switch Response



Action on Wall Switch

Wall Switch Response



Action on Wall Switch

Wall Switch Response



Essential Settings

The steps in factory mode must be completed to ensure proper operation.

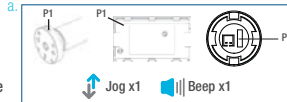
* AMPCEL and AMPTILT motors **DO NOT BEEP.**

1. Pair / Unpair Wall Switch

- a. Press “P1” button (about 2 sec) on the motor head until motor jog x1 and beep x1.
- b. In the next 10 secs, press and hold “Stop” button on the wall switch until motor jog x2 and beep x3.

Action on Motor

Motor Response



Action on Wall Switch

Motor Response



* Repeat the same procedure to unpair wall switch.

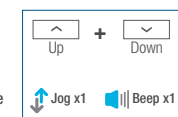
2. Change Motor Direction (if necessary)

Press “Up” or “Down” button to check if the shade moves in the desired direction.

If you need to reverse the direction, press and hold (about 2 sec) “Up” and “Down” buttons simultaneously until motor jog x1 and beep x1.

Action on Wall Switch

Motor Response



*The operation is only valid when there are no limits. If the motor has already set the upper and lower limit, then you can only switch direction by pressing “P1” button (about 10 sec) on the motor head until motor jog x3 and beep x3.

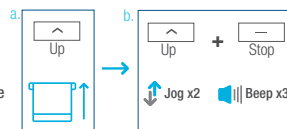
3. Setting the Upper and Lower Limits

3.1 Set Upper Limit

- a. Press “Up” button to raise the shade, then press “Stop” button when it is in the desired upper limit.
- b. Press and hold (about 5 sec) “Up” and “Stop” buttons simultaneously until motor jog x2 and beep x3.

Action on Wall Switch

Motor Response



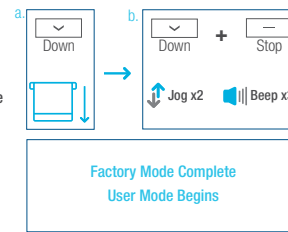
3.2 Set Lower Limit

- a. Press “Down” button to lower the shade, then press “Stop” button when it is in the desired lower limit.
- b. Press and hold (about 5 sec) “Down” and “Stop” buttons simultaneously until motor jog x2 and beep x3.

*If you exit the limit setting status before you finish the limit settings, the motor will take the previous existing limits.

Action on Wall Switch

Motor Response



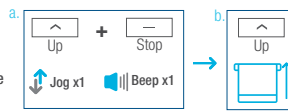
4. Adjust Limits

4.1 Adjust the Upper Limit

- a. Press and hold (about 5 sec) “Up” and “Stop” buttons simultaneously until motor jog x1 and beep x1.

Action on Wall Switch

Motor Response



- b. Use “Up” button to raise the shade to the desired highest position, and use “Up” or “Down” button to do the final adjustment if necessary.

Action on Wall Switch

Motor Response



- c. Press and hold (about 5 sec) “Up” and “Stop” buttons simultaneously until motor jog x2 and beep x3.

4.2 Adjust the Lower Limit

- a. Press and hold (about 5 sec) “Down” and “Stop” buttons simultaneously until motor jog x1 and beep x1.

Action on Wall Switch

Motor Response



- b. Use “Down” button to lower the shade to the desired lowest position, and use “Up” or “Down” button to do the final adjustment if necessary.

Action on Wall Switch

Motor Response



- c. Press and hold (about 5 sec) “Down” and “Stop” buttons simultaneously until motor jog x2 and beep x3.

5. Favorite Position

5.1 Set Favorite Position

- a. Use “Up” or “Down” button to move the shade to desired Favorite position.
- b. Press one “P2” button on the back of wall switch until motor jog x1 and beep x1.
- c. Press and hold (about 2 sec) “Stop” button until motor jog x1 and beep x1.
- d. Once more, press and hold (about 2 sec) “Stop” button until motor jog x2 and beep x3.

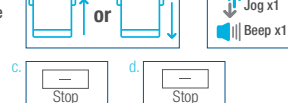
Action on Wall Switch

Motor Response



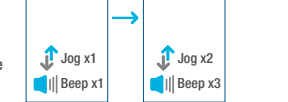
Action on Wall Switch

Motor Response



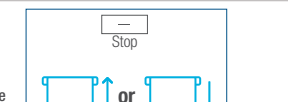
Action on Wall Switch

Motor Response



Action on Wall Switch

Shade Response

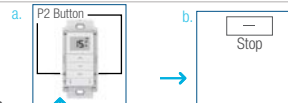


5.2 Send Shade to Favorite Position

Press and hold (about 2 sec) “Stop” button, motor will move to Favorite position.

Action on Wall Switch

Motor Response

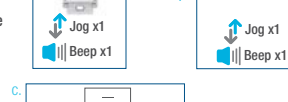


5.3 Delete Favorite Position

- a. Press one “P2” button until motor jog and beep x1.
- b. Press and hold (about 2 sec) “Stop” button until motor jog and beep x1.
- c. Once more, press and hold (about 2 sec) “Stop” button until motor jog x1 and long beep x1.

Action on Wall Switch

Motor Response



Action on Wall Switch

Motor Response



6. Roller Mode and Sheer Mode

6.1 Roller Shade Mode - continue movement after a short press - Default Mode

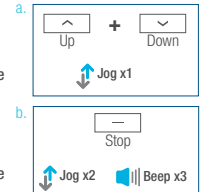
- a. Press and hold (about 5 sec) “Up” and “Down” buttons simultaneously until motor jog x1.
- b. Press and hold (about 2 sec) “Stop” button until motor jog x2 and beep x3.

Action on Wall Switch

Motor Response

Action on Wall Switch

Motor Response



6.2 Sheer Shade Mode - jog movement after a short press (continue movement after a long press)

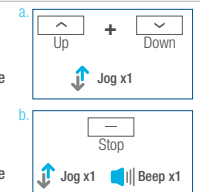
- a. Press and hold (about 5 sec) “Up” and “Down” buttons simultaneously until motor jog x1.
- b. Press and hold (about 2 sec) “Stop” button until motor jog x1 and beep x1.

Action on Wall Switch

Motor Response

Action on Wall Switch

Motor Response



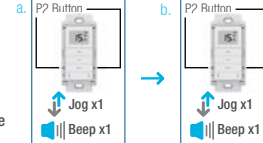
7. Add or Remove Additional Wall Switch

7.1 Using Current Wall Switch

- a. On the **current** wall switch, press and hold (about 2 sec) one “P2” button until motor jog x1 and beep x1.
- b. Once more, on the **current** wall switch, press and hold (about 2 sec) one “P2” button until motor jog x1 and beep x1.

Action on Wall Switch

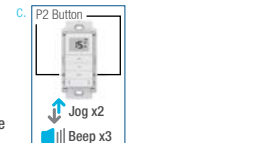
Motor Response



- c. On the **New** wall switch, press and hold (about 2 sec) one “P2” button until motor jog x2 and beep x3.

Action on Wall Switch

Motor Response



*Repeat the same procedure to remove additional wall switch.

7.2 New Wall Switch Control

Follow instructions under the section 1. Pair / Unpair Wall Switch

8. Adjust Motor Speed

8.1 Acceleration Speed

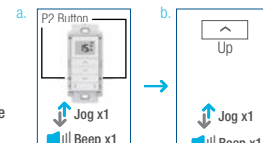
- a. Press one “P2” button until motor jog x1 and beep x1.
- b. Press “Up” button until motor jog x1 and beep x1.
- c. Once more, press “Up” button until motor jog x2 and beep x1.

Action on Wall Switch

Motor Response

Action on Wall Switch

Motor Response



8.2 Deceleration Speed

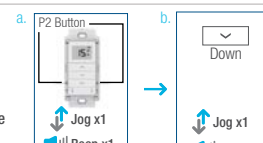
- a. Press one “P2” button until motor jog x1 and beep x1.
- b. Press “Down” button until motor jog x1 and beep x1.
- c. Once more, press “Down” button until motor jog x2 and beep x1.

Action on Wall Switch

Motor Response

Action on Wall Switch

Motor Response



*If the motor has no response, it already has a Maximum or Minimum speed.