

FCC Warning

This device complies with Part 15 of the FCC Rules. Operation is subject to the following two conditions:
(1) This device may not cause harmful interference, and (2) this device must accept any interference received, including interference that may cause undesired operation.

NOTE 1: This equipment has been tested and found to comply with the limits for a Class B digital device, pursuant to part 15 of the FCC Rules. These limits are designed to provide reasonable protection against harmful interference in a residential installation. This equipment generates uses and can radiate radio frequency energy and, if not installed and used in accordance with the instructions, may cause harmful interference to radio communications. However, there is no guarantee that interference will not occur in a particular installation. If this equipment does cause harmful interference to radio or television reception, which can be determined by turning the equipment off and on, the user is encouraged to try to correct the interference by one or more of the following measures:

- Reorient or relocate the receiving antenna.
- Increase the separation between the equipment and receiver.
- Connect the equipment into an outlet on a circuit different from that to which the receiver is connected.
- Consult the dealer or an experienced radio/TV technician for help.

NOTE 2: Any changes or modifications to this unit not expressly approved by the party responsible for compliance could void the user's authority to operate the equipment.

IC WARNING

This device contains licence-exempt transmitter(s) that comply with Innovation, Science and Economic Development Canada's licence-exempt RSS(s). Operation is subject to the following two conditions:

- (1) This device may not cause interference.
- (2) This device must accept any interference, including interference that may cause undesired operation of the device.

L'émetteur/récepteur exempt de licence contenu dans le présent appareil est conforme aux CNR d'Innovation, Sciences et Développement économique Canada applicables aux appareils radio exempts de licence.

L'exploitation est autorisée aux deux conditions suivantes:

1. L'appareil ne doit pas produire de brouillage;
2. L'appareil doit accepter tout brouillage radioélectrique subi, même si le brouillage est susceptible d'en compromettre le fonctionnement.

DECLARATIONS

U.S. Radio Frequency FCC Compliance

This device complies with Part 15 of the FCC Rules. Operation is subject to the following two conditions:

- (1) This device may not cause harmful interference, and
- (2) This device must accept any interference received, including interference that may cause undesired operation.

This equipment has been tested and found to comply with the limits for a Class B digital device, pursuant to Part 15 of the FCC Rules. These limits are designed to provide reasonable protection against harmful interference in a residential installation. This equipment generates, uses, and can radiate radio frequency energy and, if not installed and used in accordance with the instructions, may cause harmful interference to radio communications. However, there is no guarantee that interference will not occur in a particular installation. If this equipment does cause harmful interference to radio or television reception, which can be determined by turning the equipment off and on, the user is encouraged to try to correct the interference by one or more of the following measures:

- Reorient or relocate the receiving antenna.
- Increase the separation between the equipment and receiver.
- Connect the equipment into an outlet on a circuit different from that to which the receiver is connected.
- Consult the dealer or an experienced radio/TV technician for help.

Any Changes or modifications not expressly approved by the party responsible for compliance could void the user's authority to operate the equipment.

ISED RSS Warning:

This device complies with Innovation, Science and Economic Development Canada licence-exempt RSS standard(s). Operation is subject to the following two conditions: (1) this device may not cause interference, and (2) this device must accept any interference, including interference that may cause undesired operation of the device.

TROUBLESHOOTING

Problem - The motor has no response

Cause	Solution
Battery in motor is depleted	Recharge with compatible AC adaptor and check connection and positioning of solar panel
Insufficient charging from Solar Panel	Check connection and orientation of solar panel.

Remote control battery is discharged or not installed properly Replace battery or check placement.

Radio interference / shielding the motor Ensure remote control and the antenna are positioned away from metal objects.

Receiver distance is too far Move the remote control to a closer position.

Power failure Check power supply to motor is connected/active.

Incorrect wiring Check that wiring is connected correctly.

Problem - The Motor beeps 10 times when in use

Cause	Solution
Battery voltage is low/solar panel issue	Recharge with AC adapter or check connection and positioning of solar panel

Problem - The Motor Will Not Program or Connect

Cause	Solution
Check if the motor in Sleep Mode	Press the P1 button on the motor for 2 seconds to activate Pairing Mode.
Multiple Motors are paired to the same channel	Always reserve a channel for programming.

To work on a single motor at a time, place all other motors into sleep mode by pressing the P1 button (about 6 seconds) on the motor head until motor jogs X2 and beeps X2.

TOP-DOWN/BOTTOM-UP REMOTE CONTROL PROGRAMMING AND USERS GUIDE



SPECIFICATIONS

Voltage	3V (CR2450)
Radio Frequency	433.92 MHz Bi-directional
Transmitting Power	10 milliwatt
Operating Temperature	14°F to 122°F (-10°C to 50°C)
RF Modulation	FSK
Lock Function	Yes
IP Rating	IP20
Transmission Distance	up to 200m (outdoor)

SAFETY INSTRUCTIONS

Never drop, knock drill or submerge the motor, Read all safety instructions before installation. Incorrect installation can lead to serious injury and will void manufacturer's liability and warranty.

- Do not expose motor to humid, damp, or extreme temperature conditions.
- Do not drill into motor.
- Do not cut the antenna. Keep it clear from metal objects.
- Do not allow children to play with this device.
- If the power cable or connector is damaged, do not use.
- Ensure the correct crown and drive adaptor are used.
- Ensure the power cable and aerial is clear and protected from moving parts.
- Cable routed through walls should be properly isolated.
- Motor is to be mounted in horizontal position only.
- Before installation, remove unnecessary cords and disable equipment not needed for powered operation.
- Installation and programming should be performed by a qualified professional. Use or modification outside the scope of these instructions may void warranty.

08/22

QUICK INDEX

Settings	Steps
1 Pairing	TDBU Shades: P1 (hold down for 2s) > Left Stop (hold down for 2s) Regular Shades: P1 (hold down for 2s) > Stop (hold down for 2s) Per Left / Right you choose to pair
2 Switch Rotating Direction	TDBU Shades: Left Up + Left Down (hold down for 2s) Regular Shades: Up + Down (hold down for 2s) Per Left / Right paired
3 Setting Upper & Lower Limits	TDBU Shades: Upper Limit: Up (hold down for 2s) > Left Up + Left Stop (hold down for 2s) Lower Limit: Down (hold down for 2s) > Left Down + Left Stop (hold down for 2s) Regular Shades: Upper Limit: Up (hold down for 2s) > Up + Stop (hold down for 2s) Per Left / Right paired Lower Limit: Down (hold down for 2s) > Down + Stop (hold down for 2s) Per Left / Right paired
4 Add / Remove Favorite Position	TDBU Shades: P2 > Left Stop > Left Stop Regular Shades: P2 > Stop > Stop Per Left / Right paired
5 Roller Mode & Sheer Mode Switch	TDBU Shades: Left Up + Left Down (hold down for 5s) > Stop Regular Shades: Up + Down (hold down for 5s) > Stop Per Left / Right paired
6 Adjust Limits	TDBU Shades: Upper Limit: Left Up + Left Stop (hold down for 5s) > Up or Down > Left Up + Left Stop (hold down for 2s) Lower Limit: Left Down + Left Stop (hold down for 5s) > Up or Down > Left Down + Left Stop (hold down for 2s) Regular Shades: Upper Limit: Up + Stop (hold down for 5s) > Up or Down > Up + Stop (hold down for 2s) Per Left / Right paired Lower Limit: Down + Stop (hold down for 5s) > Up or Down > Down + Stop (hold down for 2s) Per Left / Right paired
7 Pair / Unpair Additional Emitter	TDBU Shades: P2 (existing) > P2 (existing) > P2 (new) Regular Shades: P2 (existing) > P2 (existing) > P2 (new) Per Left / Right paired
8 Speed Regulation	TDBU Shades: Acceleration: P2 > Left Up > Left Up Deceleration: P2 > Left Down > Left Down Regular Shades: Acceleration: P2 > Up > Up Per Left / Right paired Deceleration: P2 > Down > Down Per Left / Right paired

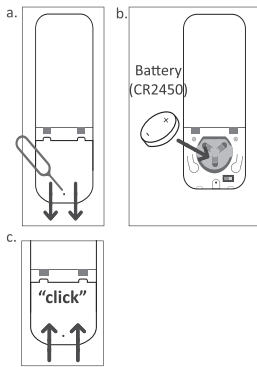
Do not dispose of in general waste. Please recycle batteries and damaged electrical products appropriately.

REPLACE/INSTALL CR2450 BATTERY

a. Gently insert the included ejector tool into the small pinhole opening and apply a small amount of pressure to the cover and slide the cover off.

b. Install battery (CR2450) with positive (+) side facing up.

c. Gently slide the cover back on until a "click" sound is heard.



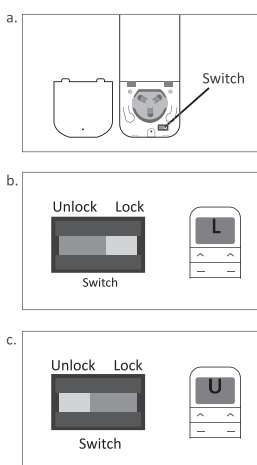
ADVANCED SETTING - DISABLE LIMIT SETTING

a. Remove the cover from the backside of remote, the lock switch is in the right corner.

b. Move the switch to the "Lock" position to disable the following commands, remote will show "L" (lock):

- Change Motor Direction
- Setting the Upper and Lower Limit
- Adjust Limit
- Roller Mode or Sheer Mode

c. Move the switch to "Unlock" position to assess all remote functions, remote will show "U" (unlock).



*This advanced feature is intended to be used after all shade programming is completed. User Mode will prevent accidental or unintended changing of limits.

MOTOR CHARGING AND BATTERY STATUS INDICATORS

Internal Rechargeable Battery

During operation, if the motor begins to beep, this is an indicator to let users know the motor power is low needs to be charged. To charge, plug the micro-USB port on the motor into the 5V/2A charger.



Blinking Red:
Low battery alert



Blinking Green:
Charging in process



Solid Green:
Finished charging

External Rechargeable Battery Pack

During operation, if the voltage is detected to be too low, the battery stops running and needs to be recharged. To charge, plug the micro-USB port on the end of the battery pack into the 5V/2A charger.



Solid Red:
Charging in process



Solid Green:
Finished charging

CHANNEL OPTIONS

Select A Channel

a. Press "<" button on the remote to select a lower channel.

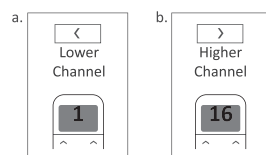
b. Press ">" button on the remote to select a higher channel.

Action on Remote Control

Lower Channel

Higher Channel

Remote Response



Channel 1 - Channel 5 are for TDBU Honeycomb



Channel 6 - Channel 16 are for Standard or Tilt-Only shades



Channel 0 - Controls all shades



HIDE UNUSED CHANNELS

Unused channels can be hidden: Channel 1 - 5: Channel 1 must show

a. At CH 1 ~ CH 5, Press and Hold (about 3 sec) "<" and ">" buttons simultaneously until remote control displays "t" (TDBU).

b. Press "<" or ">" button to select desired channel (between 1 ~ 5).

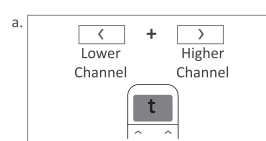
c. Press "Stop" button to confirm selection (the example shows a 3-channel selection). The LED will display "o" (OK) once to confirm selection.

Action on Remote Control

Lower Channel

Higher Channel

Remote Response

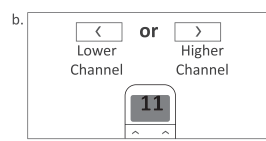


Action on Remote Control

Lower Channel

Higher Channel

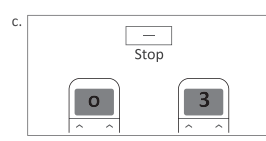
Remote Response



Action on Remote Control

Stop

Remote Response

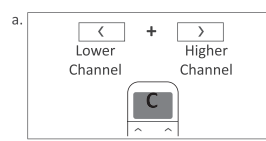


Action on Remote Control

Lower Channel

Higher Channel

Remote Response



Action on Remote Control

Lower Channel

Higher Channel

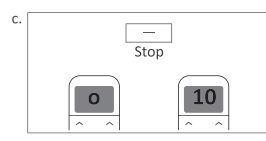
Remote Response



Action on Remote Control

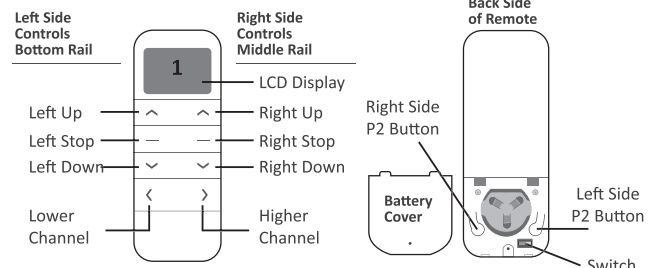
Stop

Remote Response

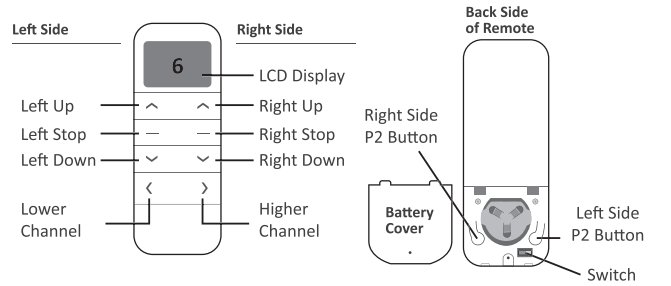


BUTTON INSTRUCTIONS

Channel 1 - Channel 5 are for TDBU Shades



Channel 6 - Channel 16 are for regular shades. The right side and left side serve the same function and can be considered as 2 individual channels.



P1 BUTTON LOCATION

