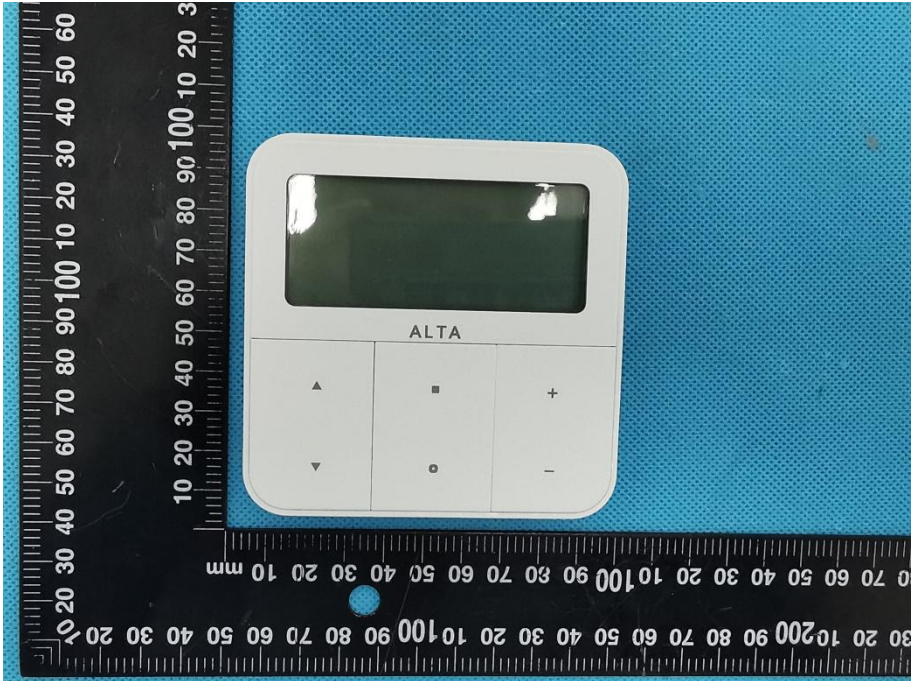

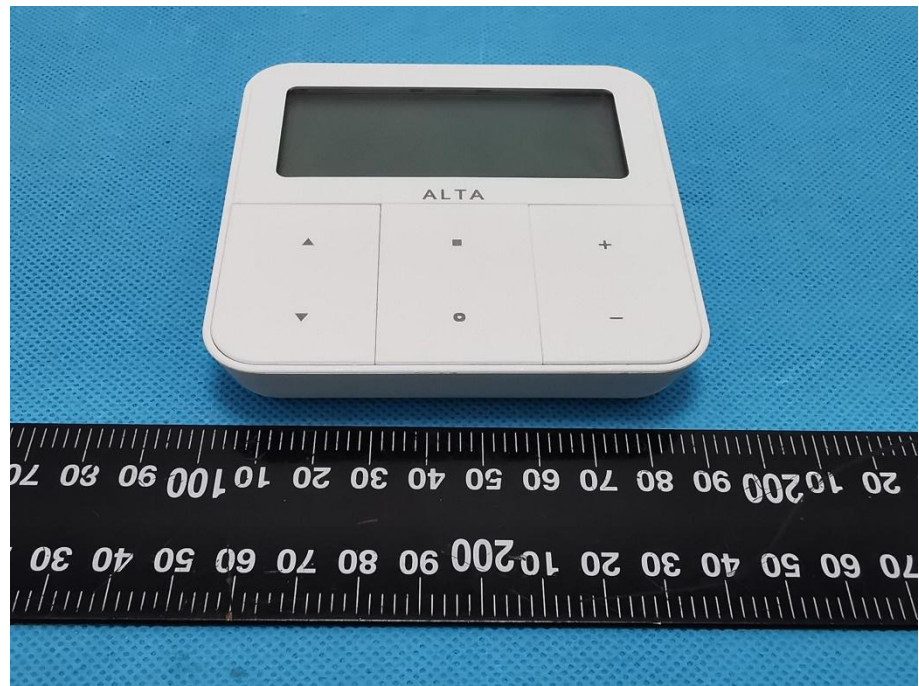


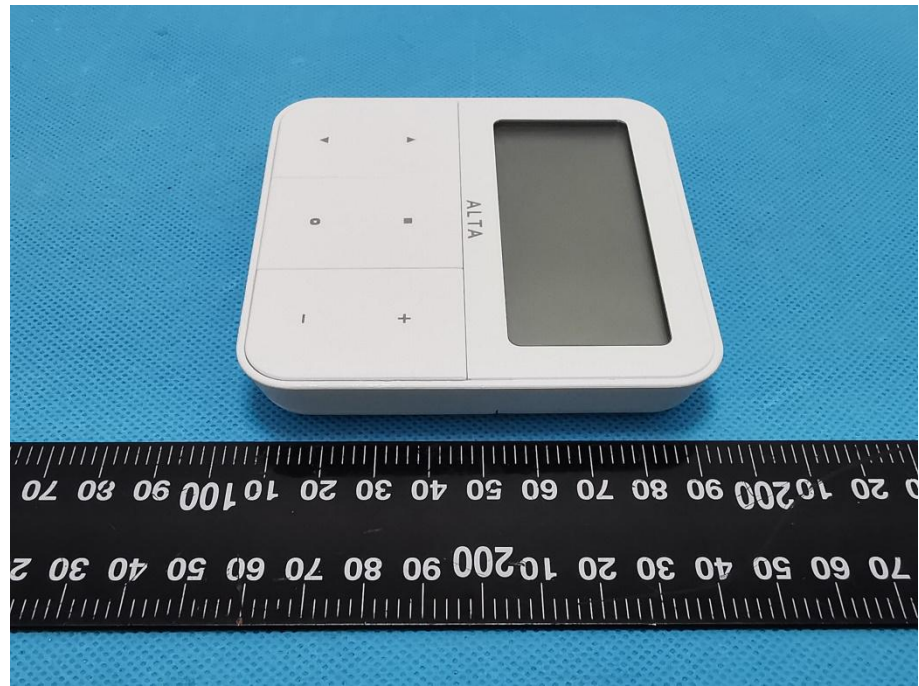
EXHIBIT 2 - EUT EXTERNAL PHOTOGRAPHS

<p>EUT View 1</p>	 <p>A photograph showing the front view of a white, rectangular electronic device labeled "ALTA". The device features a small, dark screen at the top and a control panel below it with four buttons: a left arrow, a square, a right arrow, and a minus sign. The device is placed on a blue textured surface next to a black ruler with white markings. The ruler shows measurements in millimeters and centimeters.</p>
<p>EUT View 2</p>	 <p>A photograph showing the back view of the same white, rectangular electronic device. The back panel is plain with a small, recessed rectangular area near the top center. The device is placed on a blue textured surface next to a black ruler with white markings, similar to the first view.</p>

EUT View 3



EUT View 4



EUT View 5



EUT View 6

