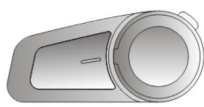


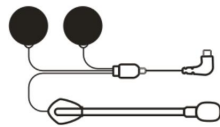
**M2**

## **GROUP INTERCOM HELMET BLUETOOTH HEADSET**

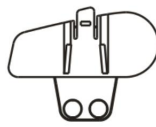
### **1 Packing List**



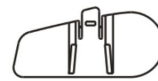
Bluetooth  
Device



Microphone &  
Ear Speakers



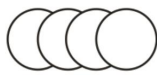
Clamp



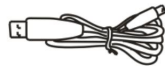
Velcro Clamp



Manual



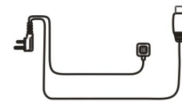
Headphone  
Velcro



USB Cable



Screw Driver



Two-way Radio Control  
Cable(Optional)

- *Bluetooth Device*
- *Microphone & Ear Speakers*
- *Clamp*
- *Velcro Clamp*
- *Manual*
- *Headphone Velcro*
- *USB Cable*
- *Screw Driver*
- *Two-way Radio Control Cable (Optional)*

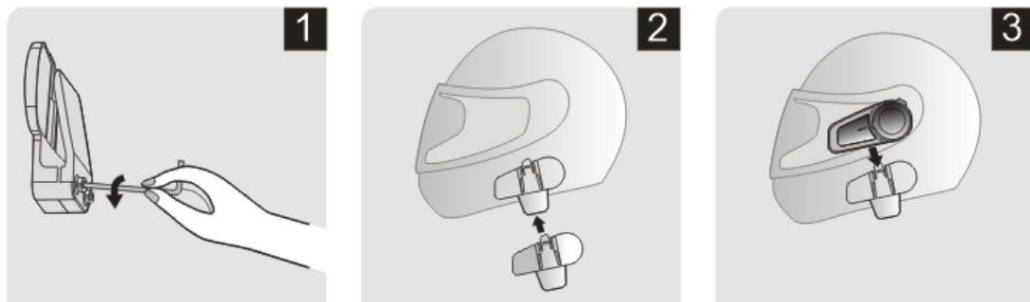
### **2 Function Introduction**

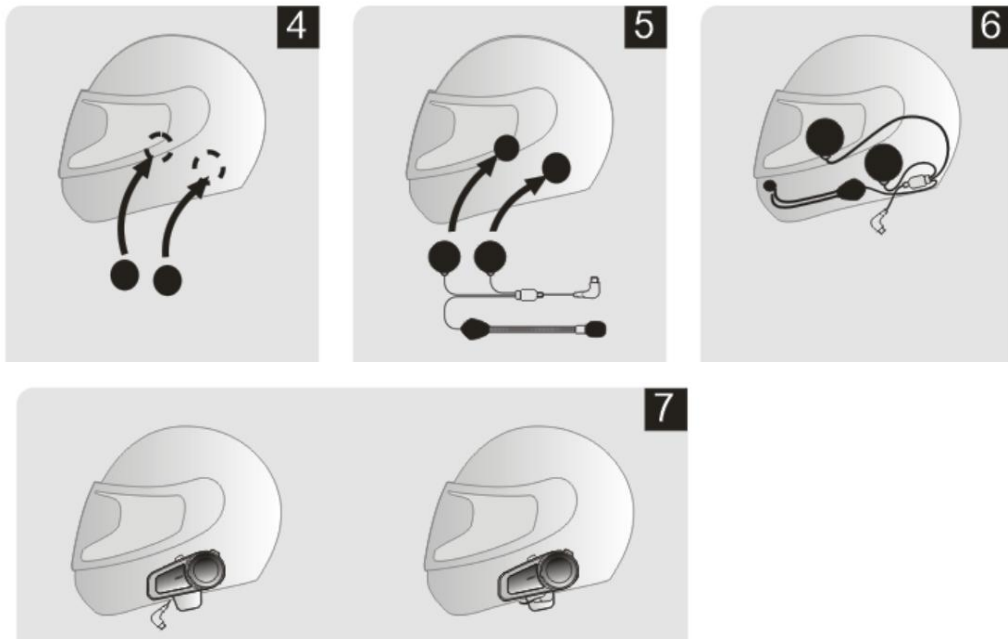
- *Fleet communication*

- Connect to any bluetooth headset
- Simultaneous connection of multiple devices
- Operating range 1000 meters
- Connected with 2 mobile phones
- Stereo music A2DP
- Voice Dial
- Voice prompt
- Usable during recharging
- Bluetooth 5.0
- FM Radio
- Connected with two-way radio
- Playback Control
- Water-proof
- Advanced noise control

### 3 Installation Step

#### 3.1 Fixed by clamp





1. Loosen the screws on the back of clamp with the provided screw driver.
2. Open the lining of helmet, insert the clamp in the proper position on the left of helmet and fasten the screw.
3. Slide the back track of the device into the clamping track.
4. Open the inner lining on the ear position of the helmet and attach the VELCRO loop.
5. Attach the Headphone Velcro hook to the loop (the short-line speaker is on the left).
6. Place butterfly sticker in the right position on the left side of the helmet, match the microphone with the mouth position, and tidy up the line and lining.
7. Insert the plug into the headset socket and the

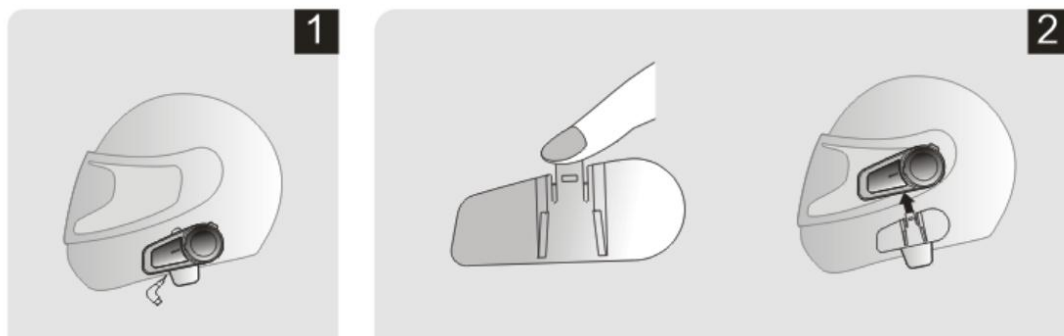
installation complete.

### 3.2 Fixed by VELCRO sticker



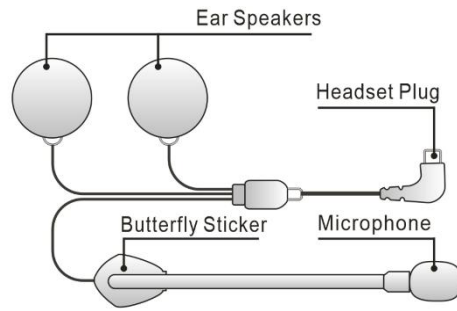
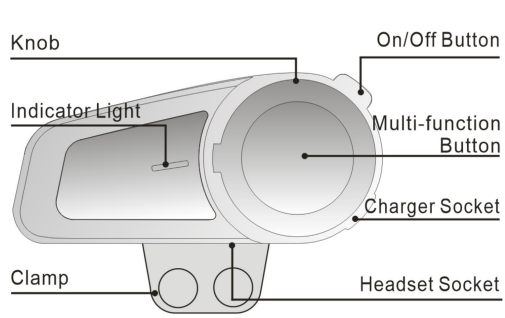
1. Slide the back track of the device into the clamping track.
2. Tear off the white paper on the back of the clamp and stick it in the right position on the left side of the helmet.
3. Ear speakers & Microphone installation step refer to 3.1

### 4 Disassembly of the Device



1. Pull out the headset plug.
2. Press the upper clamp buckle and move the device upward to remove it.

### 5 Product Introduction



- On/Off Button
- Multi-function Button
- Charger Socket
- Headset Socket
- Knob
- Indicator Light
- Clamp
- Ear Speakers
- Headset Plug
- Microphone
- Butterfly Sticker

## 6 Button Operation Introduction

### 6.1 On/Off Button

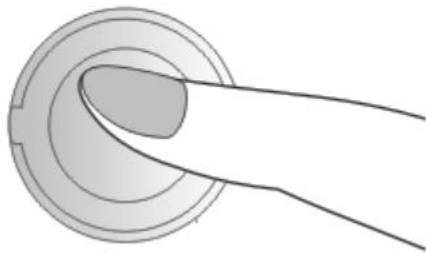


- **Turn on** ( When the headset is off, press and hold it for 3 seconds. There is a “Welcome to use Maxto Product” sound prompt, and the blue light will be on for 1 second.)
- **Turn off** ( When the headset is on, press and hold it for 5 seconds. There is a “Power Off” sound prompt, and the red light will be on for 1 second.)
- **Pairing** ( When the headset is off, press and hold it for 6 seconds. There is a “Pairing” sound prompt, and blue and red lights flash alternately.)
- **Clear the pairing device** ( When the headset is on, press down the button and hold the button down for another 3 seconds after hearing “power off” sound prompt until the red light quickly flashes 3 times and a “toot” sound prompt can be heard.
- **Start the Bluetooth Intercom** (When paired, press once on the button, you will hear an "Intercom Connected" sound prompt When the connection is successful, then press again to disconnect the intercom, then press again to reconnect.)

**Note:** When B connects with A first and then connected with C, B needs to press the button twice to initiate intercom with A, and B needs to press the button once to initiate intercom with C

- **End the Bluetooth Intercom** ( Shortly press the button and intercom closes after a “Intercom disconnected” sound prompt.)

## 6.2 Multi-function Button

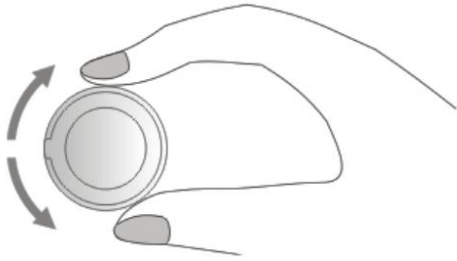


- **Pairing** ( When the headset is on, press and hold it for 6 seconds. There is a “Pairing” sound prompt, and blue and red lights flash alternately.)
- **Answering a call** ( When connected and there is a call, click it once or take no action in 10 seconds. The call will be put through automatically with a “Dong, Dong” sound prompt.)

- **Rejection of call** ( If there is a call, press and hold it for 2 seconds. The call will be rejected with a “Dong, Dong” sound prompt. )
- **Voice switching between Bluetooth headset and mobile phone itself** ( During a call, press and hold it for 2 seconds. There is a “Dong” sound prompt, and the red light flash every other second.)
- **End a call** ( During the call, click it once and there is a “Dong” sound prompt.)
- **Voice dialing** ( If you are not on a call, click it twice and there is a “Voice Dial” sound prompt.)
- **Music Play/Pause** ( When connected, click it once.)
- **Switch between bluetooth and FM** ( When the headset is on, triple-click it and there is “Bluetooth mode” or “FM mode” sound prompt.)



### 6.3 Knob



- **Turn up the volume** ( On a call , intercom, playing music or FM, turn the knob clockwise and hold it to increase volume until it reaches the level you want . A “toot” prompt will be heard when it reaches Max volume.)
- **Turn down the volume** ( On a call , intercom, playing music or FM, turn the knob counter clockwise and hold it to decrease volume until it reaches the level you want . A “toot” prompt will be heard when it reaches Min volume.)
- **Play the next** ( When playing music or FM, turn the knob clockwise .)
- **Play the previous** ( When playing music or FM, turn the knob counter clockwise .)

## 7 Bluetooth Status Indication and Prompt

- **Power on status** ( If Bluetooth is connected, there is a “Bluetooth connected” sound prompt , the blue indicator light flashes once every 6 seconds; if Bluetooth is disconnected, there is a “Bluetooth disconnected” sound prompt , the blue indicator light flashes twice every 6 seconds.)
- **Low power alarm** ( The “Battery Low” sound is prompted every 60 seconds when the power is turned on, and the indicator light turns to red light flashing.)
- **Charging state** ( Red light is on when charging. Red light is off when charging is completed.)
- **Battery status sound prompt when powered on** ( If the battery is full, the “Battery Full” sound is prompted. If the battery is medium, the “Battery Medium” sound is prompted. If the battery is low, the “Battery Low” sound is prompted.)

## 8 Pairing Methods

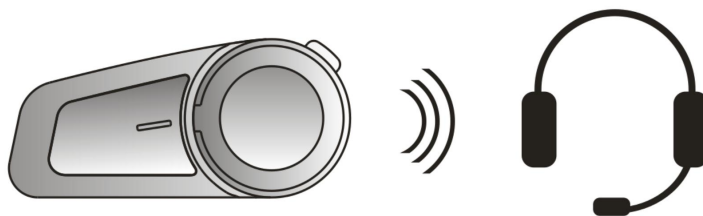
### 8.1 Two ways for M2 to enter paired state

**Mode 1:** When the headset is off, press and hold On/Off Button for 6 seconds.

**Mode 2:** When the headset is on, press and hold Multi-function Button for 6 seconds.

There is a “Pairing” sound prompt, and blue and red lights flash alternately.

### 8.2 Pairing with the Non-Maxto intercom function Bluetooth device



**Step 1 :** Place the M2 and the device within a visible range of 1 meter.

**Step 2 :** Set the Non-Maxto intercom function Bluetooth device into pairing mobile phone status.

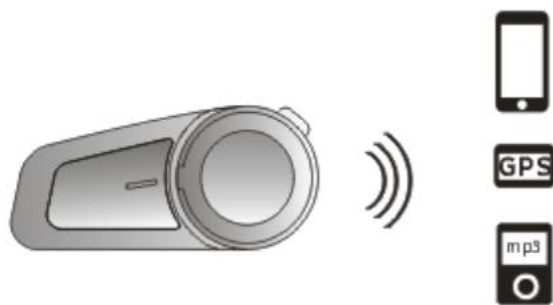
**Step 3 :** Follow step 8.1, M2 enters pairing status.

**Step 4 :** Quickly press M2 on/off button, then it will search for the device for pairing, the “intercom connected” sound prompt means the connection is successful.

**Note 1:** In step 4, the intercom connection must be initiated by M2.

**Note 2:** When intercom, press M2 on/off button to disconnect the intercom, then press again to reconnect.

### 8.3 Pairing with Mobile, GPS and MP3



**Step 1 :** Place the M2 and the device within a visible range of 1 meter. **Step 2 :** Follow step 8.1, M2 enters pairing status.

**Step 3 :** Turn on the device bluetooth, search M2 and connect. The “connected” sound prompt means the connection is successful.

#### 8.4 Pairing between two M2

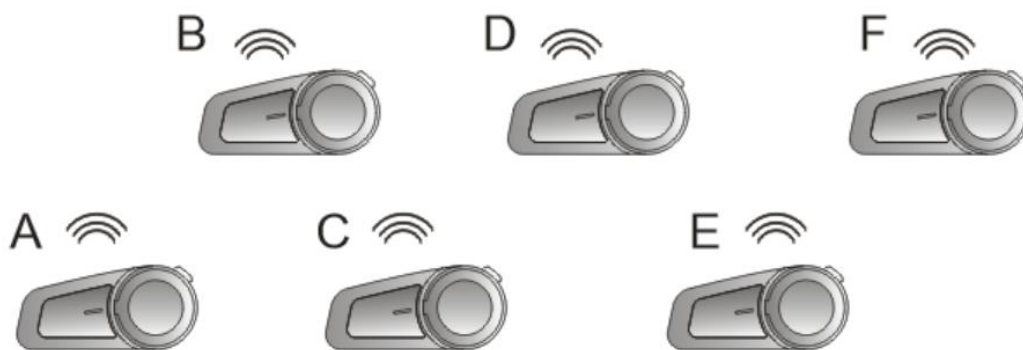


**Step 1 :** Ensure both M2 are of f and within 1 meter visible range of each other.

**Step 2 :** Follow step 8.1, both M2 are paired.

**Step 3 :** Quickly press the on/off button on either M2, then it will search for the other M2 for pairing, the “intercom connected” sound prompt means the connection is successful.

#### 8.5 Group Intercom Settings



**Step 1 :** Clear the matching record between A and F

Press and hold the on/off buttons of A and F for **5** seconds until you hear sound prompt “power off”, then hold them for another 3 seconds.

**Step 2 : Refer to the matching operations in 8.4 for following operations**

1. Match A and B;
2. Match B and C;
3. Match C and D;
4. Match D and E;
5. Match E and F.

**Step 3 : Connect A, B, C, D, E and F in series**

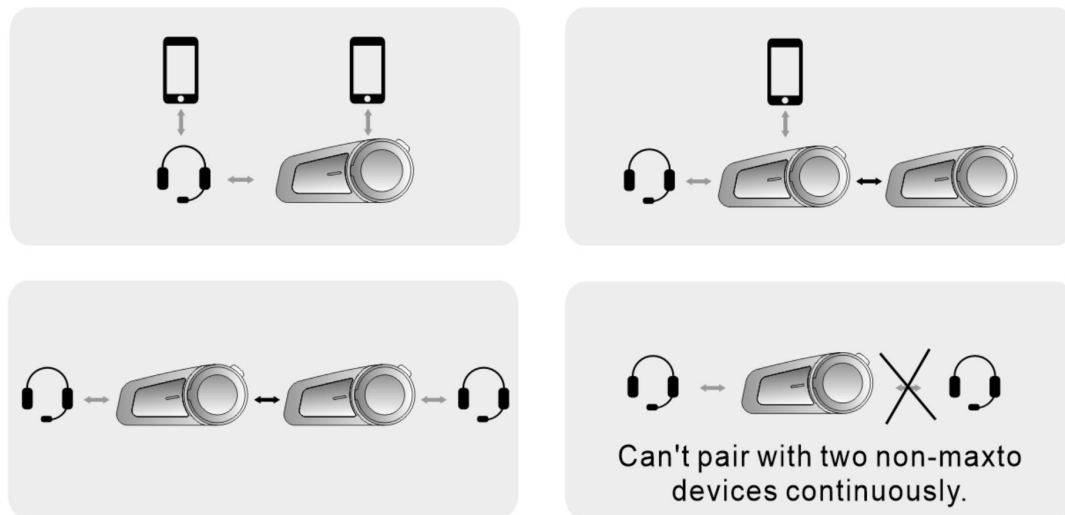
1. For D, press the on/off button to connect with E;
  2. For C, press the on/off button to connect with D;
  3. For B, press the on/off button to connect with C;
  4. For A, press the on/off button to connect with B;
- E and F are not disconnected after the step 2 is completed.  
Now A, B, C, D, E and F are all matched successfully, you can enter group intercom.

**Note:** During the 6 people group intercom, if D receives a call, D will be disconnected temporarily from the group. A , B and C form a group, E and F form a group.

After D's call is over, D will be automatically reconnected into the group intercom and 6 people group intercom

resumes.

## 8.6 Simultaneous connection of multiple devices



**Note:** When non-maxto device is connected to the mobile phone first and then looped into M2 multi-person intercom, it may cause intercom communication error. If not connected to mobile phone, no this error.

## 9 Priority of Functions

**Level 1:** Phone call & Intercom by introduced adapter.

**Level 2:** Intercom introduced by Two-way radio cable.

**Level 3:** Bluetooth Intercom

**Level 4:** FM & Music

## **10 Specifications**

Bluetooth version	5.0
Operating range	Up to 1000 meters
Standby time	Up to 200 hours
Operating time	Up to 10 hours
Charging time	Approximately 2.5 hours
Charging interface	Micro USB Android
universal plug	
Battery Type	Rechargeable Li-Polymer
Batteries	
Power Supply	5V – 0.5A
Operating Temperature	14F-131F
(-10°C -55°C)	
Storage temperature	-4F-140F (-20°C~60°C)

\* Depending on the phone type and usage, the actual time may vary.

## **11 Matters needing Attention**

1.The appropriate storage temperature for this device is between -20°C and 50°C. Please do not store it in environment with too



high or too low temperatures. Otherwise the service life will be affected.

2. Please do not expose it to open fire, to avoid explosion.

3. For a long period of time without being used, please keep the device in dry place and charge it regularly (once every 3 months), to ensure it work properly.

Changes or modifications not expressly approved by the party responsible for compliance could void the user's authority to operate the equipment.

This equipment has been tested and found to comply with the limits for a Class B digital device, pursuant to Part 15 of the FCC Rules. These limits are designed to provide reasonable protection against harmful interference in a residential installation. This equipment generates, uses and can radiate radio frequency energy and, if not installed and used in accordance with the instructions, may cause harmful interference to radio communications. However, there is no guarantee that interference will not occur in a particular installation.

If this equipment does cause harmful interference to radio or television reception, which can be determined by turning the equipment off and on, the user is encouraged to try to correct the interference by one or more of the following measures:

- Reorient or relocate the receiving antenna.
- Increase the separation between the equipment and receiver.
- Connect the equipment into an outlet on a circuit different from that to which the receiver is connected.
- Consult the dealer or an experienced radio/TV technician for help.

This device complies with Part 15 of the FCC Rules.

Operation is subject to the following two conditions:

- (1) this device may not cause harmful interference, and
- (2) this device must accept any interference received, including interference that may cause undesired operation.