

ANWEI communication Equipment Co.,Ltd

APPROVAL SHEET

客户 Customer	Youmi	规格型号 Specs	G7
安威料号 Part Number	G7 4G-MAIN-AW G7 4G-DIV-AW G7 4G-2.4G/5GWIFI/GPS-AW G7 5G-NFC/FM-AW	频段 Frequency Band	G4P+W1/2/4/5/6/8/19+FDD1/2/3/4/5/7/8 /12/13/17/19/20/25/26/28A/B/66/71+TDD 34/38/39/40/41
颜色 Color	Black	版本 Edition	REV:A
销售 Salesperson	Mr.Xie	设计 Design	Tang di
结构 Structure	Qin yunlin	确认 Confirm	
日期 Date	12/5/2023	签字日期 Signing Date	

客户确认 Customer confirmation:

ANT Manufacturers: ANWEI communication Equipment Co.,Ltd

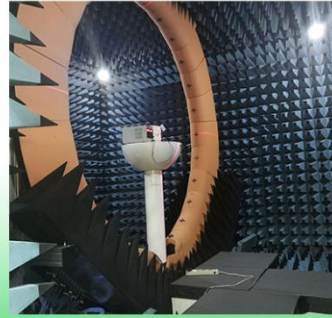
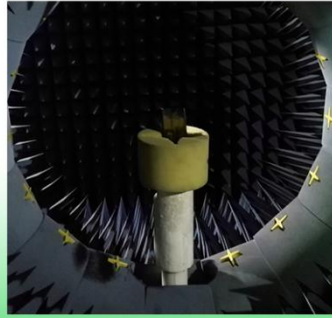
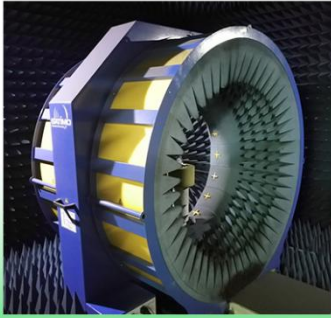
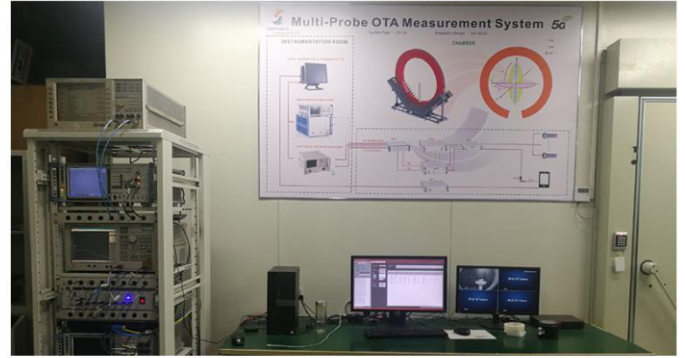
Address:2nd Floor, East Block, Building 5, Yifenghua Innovation Industrial Park, Huaning Road, Dalang Street, Longhua District, Shenzhen City, Guangdong Province

携手共进 共创未来

Join hands to create the future

● 项目开发环境

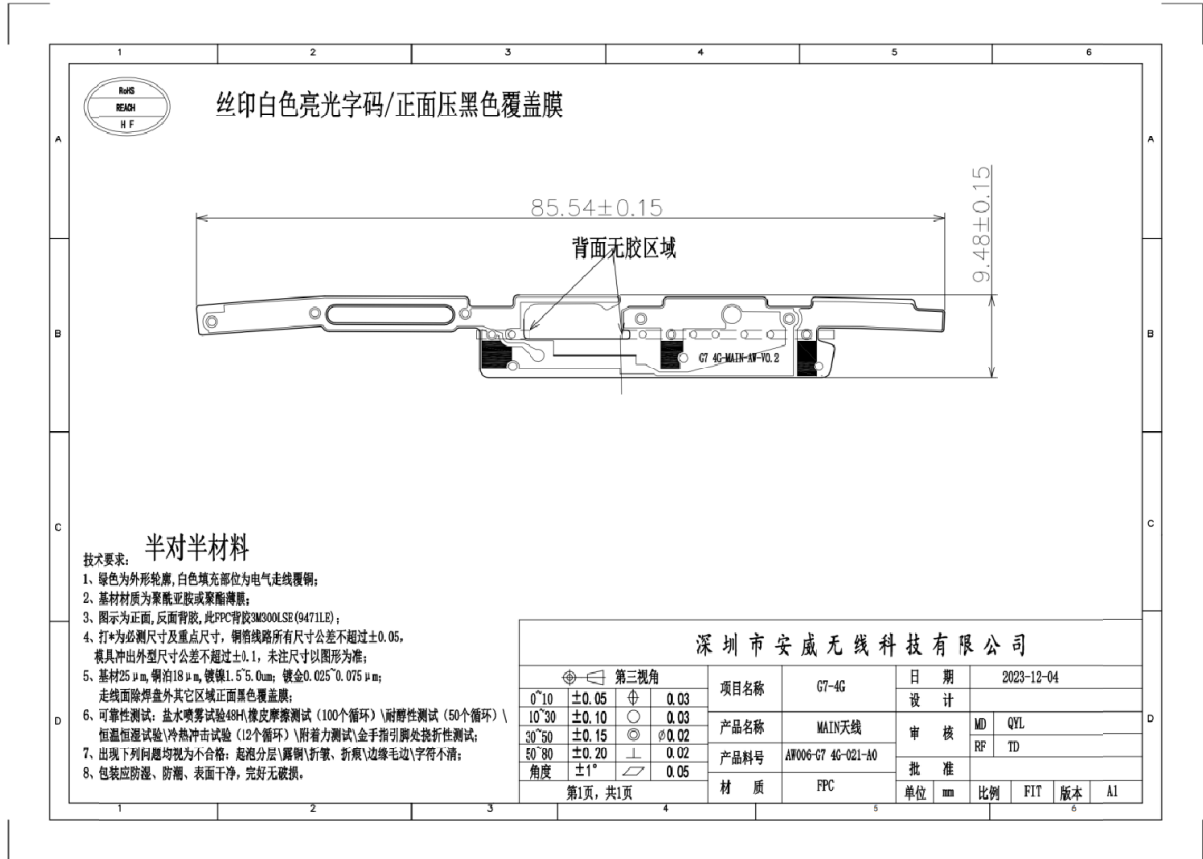
Project development environment



安威无线一直都是您值得信赖且优秀的合作伙伴，我们为您提供全方位一站式的产品以及技术服务！

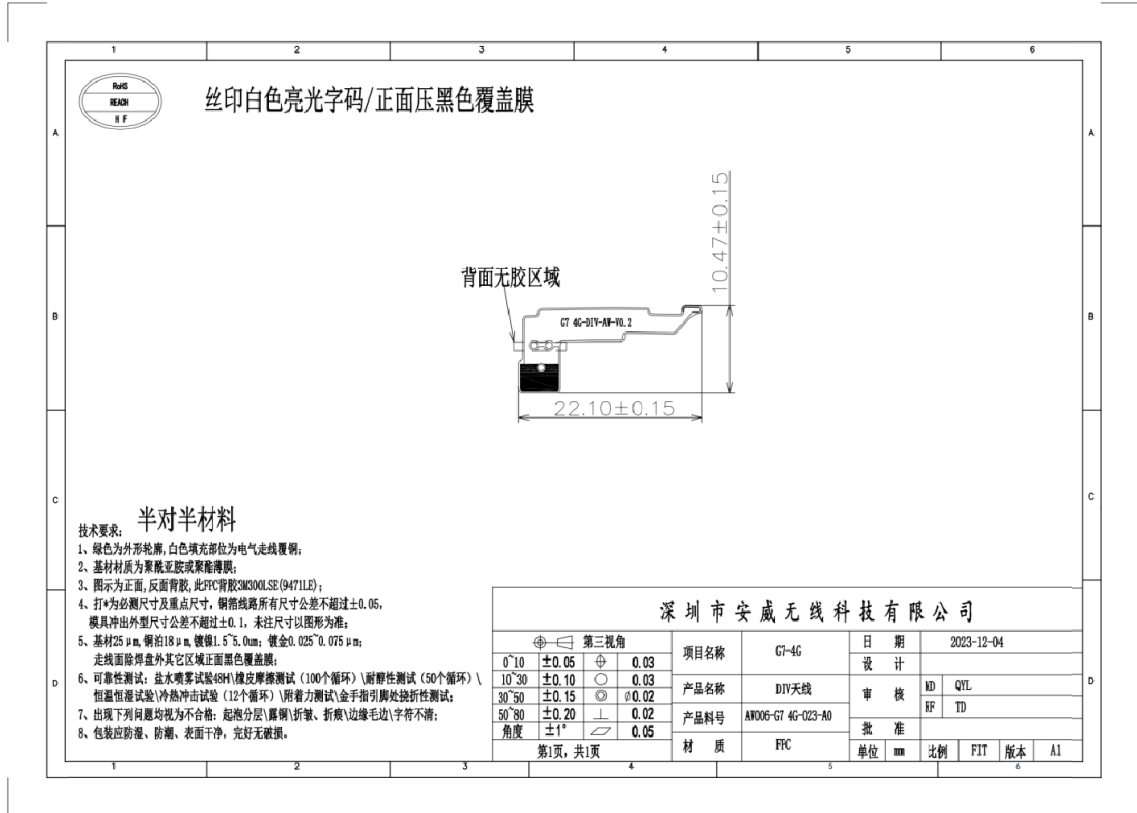
“质量第一，服务至上”是安威一直以来的发展宗旨

Main ANT



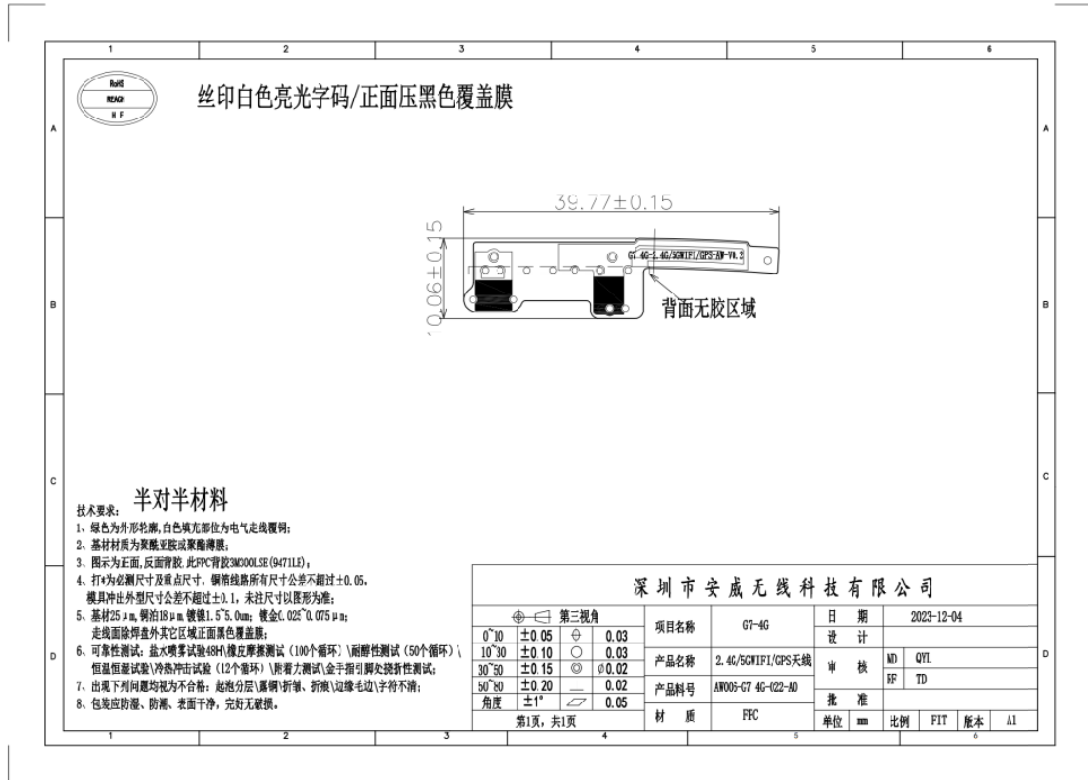
工作频段(Working frequency band): 700MHZ~960MHZ GSM850/900 WCDMB5/6/8/ /19 FDD5/7/8/12/13/17/19/20/26/28AB/71 TDD 38/40/41

DIV ANT



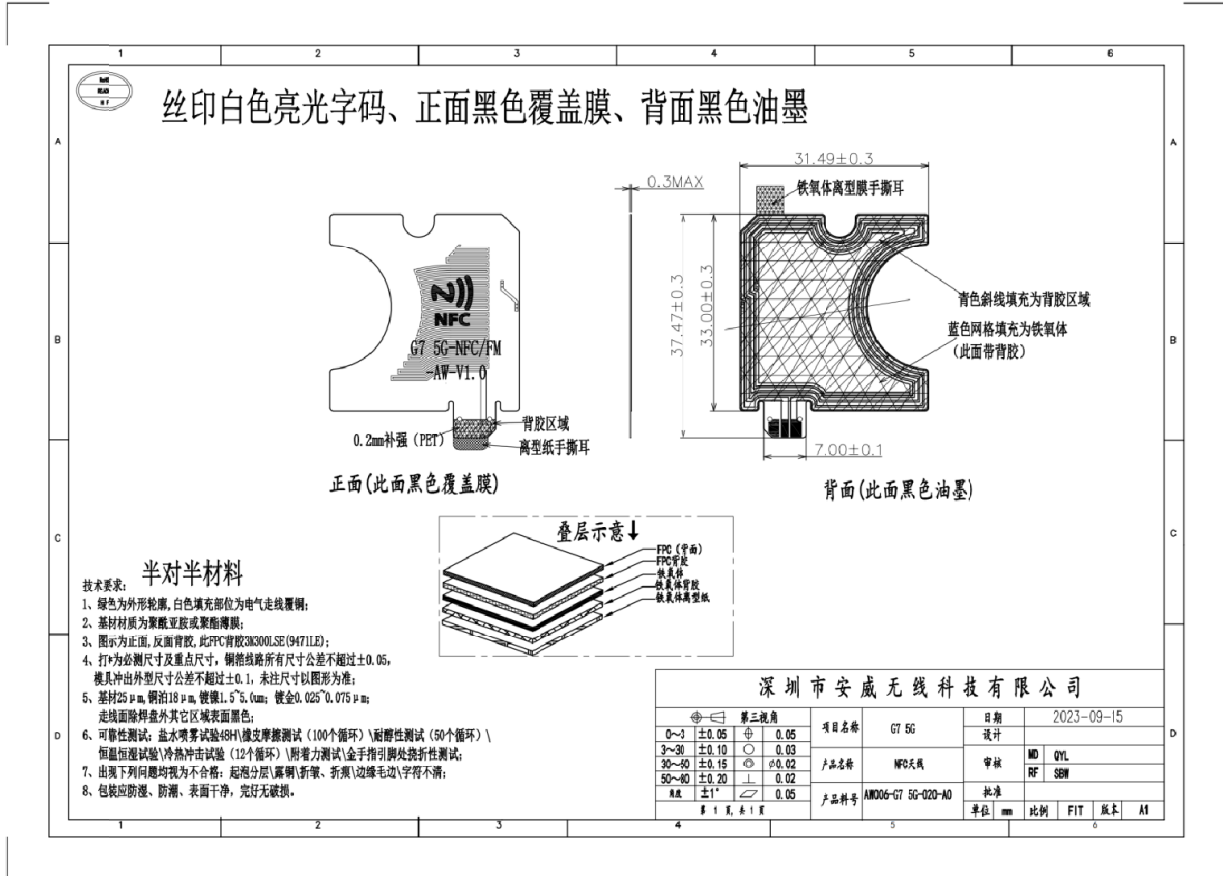
工作频段(Working frequency band):1710MHZ~2620MHZ DCS1800、PCS1900、WCDMA1/2/4、FDD1/2/3/4/7/66/71、TDD38/39/40/41

GPS/WIFI/BT antenna



GPS 天线工作频段 (Working frequency band of GPS antenna) : 1559MHZ~1616MHZ
 5GWIFI 工作频段 (Working frequency band of 5GWIFI antenna) : 5100MHZ~5850MH
 2.4GWIFI/BT 工作频段 (Working frequency band of 2.4G antenna) : 2400MHZ~2500MH

NFC antenna



ANWEI ANT TRP&TIS parameter Summary of G7

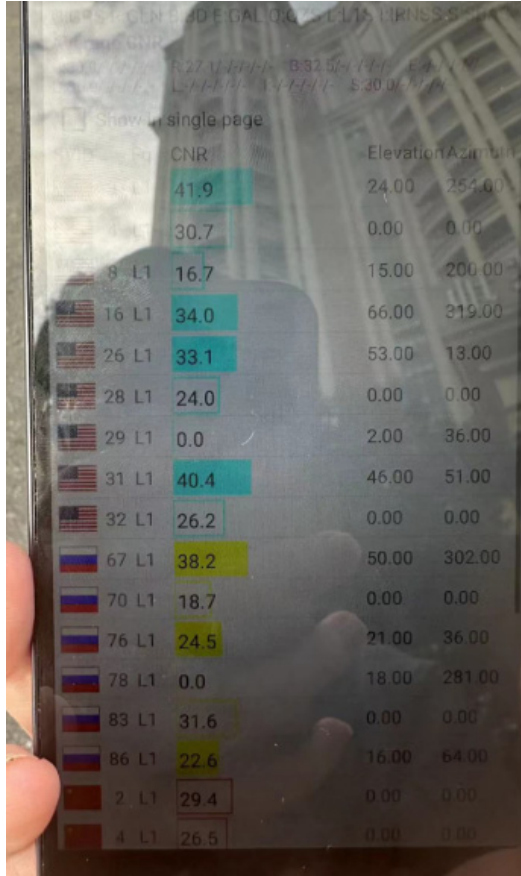
Band	Channel	Total	TIS	Band	Channel	Total	TIS
TDD_B34	36250	16.44		FDD_B4	20000	17.2	
	36275	17.74			20175	18.71	
	36300	16.28	92.2		20350	18.14	92.14
TDD_B38	37850	16.94		FDD_B5	20450	16.24	
	38000	15.55			20525	16.3	
	38150	14.2	87.88		20600	16.13	90.8
TDD_B39	38350	20.55		FDD_B7	20800	17.52	
	38450	20.06			21100	17.07	
	38550	20.5	90.95		21400	16.34	88.56
TDD_B40	38750	14.54		FDD_B8	21500	16.1	
	39150	16.7			21625	15.5	
	39550	18.42	89.59		21750	15.63	88.9
TDD_B41	40620	14.6	86.81	FDD_B12	23060	16.67	
FDD_B1	18050	18.2			23095	16.3	
	18300	17.34			23130	16.4	89.08
	18550	17.3	90.81	FDD_B13	23230	13.5	88.19
FDD_B2	18650	19.65		FDD_B17	23780	16.5	
	18900	19.4			23790	17.4	
	19150	19.52	92.35		23800	16.28	90.72
FDD_B3	19250	18.5		FDD_B18	23900	16.3	
	19575	18.97			23925	15.99	
	19900	18.03	93.28		23950	15.82	91.73

Band	Channel	Total	TIS
FDD_B19	24050	15.6	
	24075	15.7	
	24100	15.7	91.3
FDD_B20	24200	15.7	
	24300	15.64	
	24400	14.5	90.14
FDD_B25	26090	19.35	
	26365	18.98	
	26640	18.5	90.91
FDD_B26	26740	15.4	
	26865	15.34	
	26990	15.8	99.44
FDD_B28	27260	17.66	
	27370	16.33	
	27469	16.5	89.8
	27410	16.68	
	27510	17.5	
	27600	16.5	89.9
FDD_B66	132022	17.2	
	132322	17.85	
	132622	17.85	92.08

Band	Channel	Total	TIS
FDD_B71	133172	14.42	
	133297	15.37	
	133422	15.45	92.92
WCDMA_B1	9612	17.56	
	9750	16.63	
	9888	15.42	104.03
WCDMA_B8	2712	14.53	
	2787	14.6	
	2863	14.8	100.2
WCDMA_B2	9262	18.01	
	9400	17.65	
	9538	18.35	105.82
WCDMA_B4	1312	17.42	
	1413	18.71	
	1513	18.62	106.2
WCDMA_B5	4132	14.27	
	4183	14.2	
	4233	14.3	102.08
WCDMA_B6	4162	14.97	
	4175	14.04	
	4188	14.08	103.01

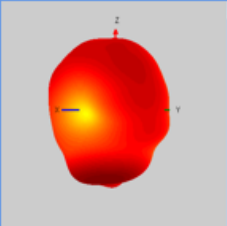
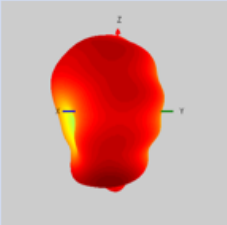
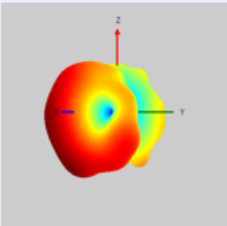
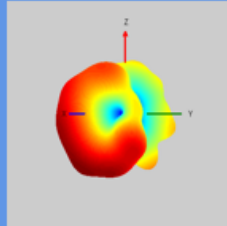
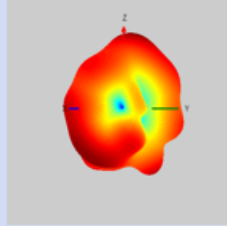
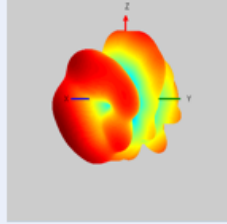
Band	Channel	Total	TIS
WCDMA_B19	312	14.45	
	412	14.14	
	437	14.35	102.37
GSM850	128	24.3	103.6
	190	24.5	103.24
	251	25.78	103.39
GSM900	1	24.5	102.8
	62	24.4	102.4
	124	24.56	99.46
DCS1800	512	24.45	105.6
	698	24.6	105.6
	885	24.6	106.47
PCS1900	512	25.4	102.5
	661	25.5	102.3
	810	25.38	102.41

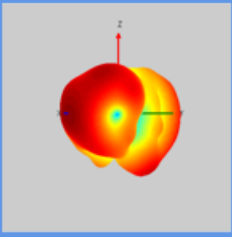
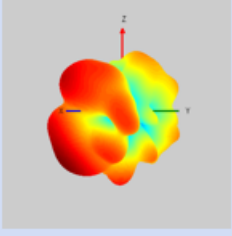
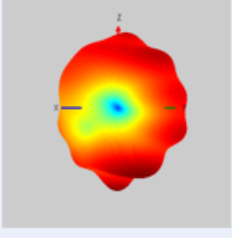
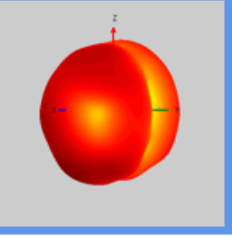
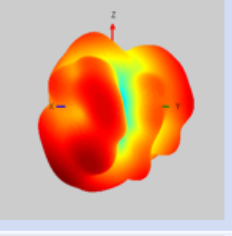
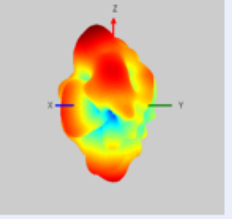
GPS/WIFI 测试(GPS/WIFITest)



Standard	Channel	Total	TIS
WIFI_B	1	10.49	79.1
	6	9.75	78.2
	11	9.84	79.5
WIFI_A	36	11.96	72.68
	64	12.12	72.2
	165	11.45	72.3

方向图 (Antenna Pattern)

GSM900/FDD B8/WCDMA B8	
GSM850/FDD B5/13/18/19/20/26 WCDMA B5/6/19	
GSM1700/FDD B3/4/25/66	
PCS1900/FDD B2/WCDMA B2 TDD B34/B39	
FDD B1/WCDMA B1	
TDD B40	

TDD B38/B41	
FDD B7	
FDD B12/17/28/71	
GPS	
2.4GWIFI/BT	
5GWIFI	

天线增益(Antenna gain)

Standard	Band	Frequency	Gain(dBi)
TDD_LTE	TDD_B34	2020	1.21
TDD_LTE	TDD_B38	2580	-1.51
TDD_LTE	TDD_B39	1900	0.98
TDD_LTE	TDD_B40	2310	-0.96
TDD_LTE	TDD_B41	2593	-1.59
FDD_LTE	FDD_B1	1925	0.99
FDD_LTE	FDD_B2	1855	0.87
FDD_LTE	FDD_B3	1715	-0.56
FDD_LTE	FDD_B4	1715	-0.56
FDD_LTE	FDD_B5	829	-2.53
FDD_LTE	FDD_B7	2505	-1.49
FDD_LTE	FDD_B8	885	-2.59
FDD_LTE	FDD_B12	704	-2.9
FDD_LTE	FDD_B13	782	-2.76
FDD_LTE	FDD_B17	709	-2.9
FDD_LTE	FDD_B18	820	-2.53
FDD_LTE	FDD_B19	835	-2.53
FDD_LTE	FDD_B20	837	-2.53
FDD_LTE	FDD_B25	1880	-0.56
FDD_LTE	FDD_B26	819	-1.53
FDD_LTE	FDD_B28	708	-2.9
FDD_LTE	FDD_B28	723	-2.8
FDD_LTE	FDD_B66	1745	-0.56
FDD_LTE	FDD_B71	680	-3.1
WCDMA	WCDMA_B1	1922.4	0.99
WCDMA	WCDMA_B2	1852.4	0.87
WCDMA	WCDMA_B4	1712.4	-0.56
WCDMA	WCDMA_B5	826.4	-2.53
WCDMA	WCDMA_B8	882.4	-2.59
WCDMA	WCDMA_B6	835	-2.53

WCDMA	WCDMA_B19	832.4	-2.53
GSM	GSM850	824.2	-2.53
GSM	GSM900	890.2	-2.59
GSM	PCS1900	1850.2	0.87
GSM	DCS1800	1710.2	-0.56
2.4GWIFI		2412	1.8
5GWIFI		5825	1.2
GPS		1575	1.6
BT		2400	1.8