

# 深圳市安威无线科技有限公司

ANWEI communication Equipment Co.,Ltd

## 规格书

APPROVAL SHEET

客户 Customer	Youmi	规格型号 Specs	G5A
安威料号 Part Number		频 段 Frequency Band	2G:2/3/5/8 3G:1/2/4/5/8 4G:B1/2/3/4/5/7/8/12/17/20/28/66/38/40/41
颜 色 Color	Black	版 本 Edition	REV:A
销 售 Salesperson	Mr.Xie	设 计 Design	Lei Yao Bo
结 构 Structure	QIN YUN LIN	确 认 Confirm	
日 期 Date	2023/7/10	签字日期 Signing Date	

客户确认 Customer confirmation:

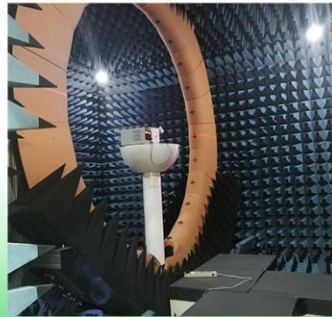
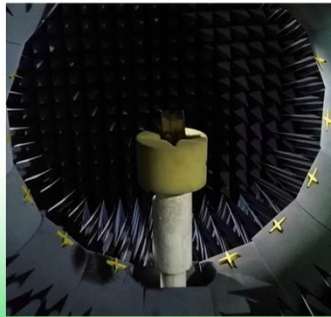
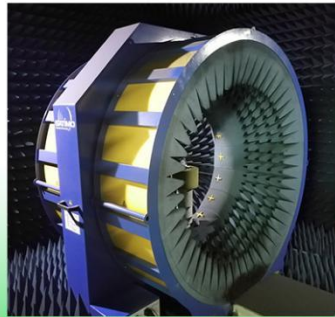
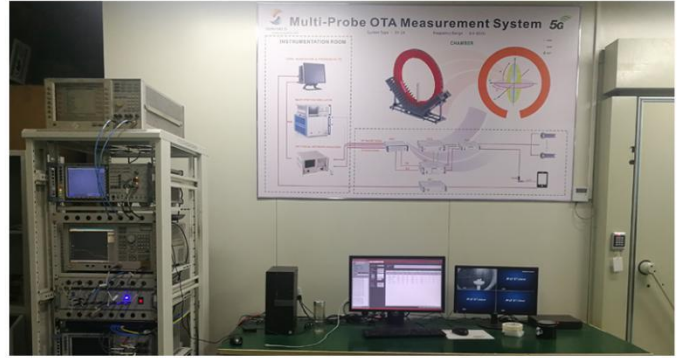
ANT Manufacturers: ANWEI communication Equipment Co.,Ltd  
Address:2nd Floor, East Block, Building 5, Yifenghua Innovation Industrial Park,  
Huaning Road, Dalang Street, Longhua District, Shenzhen City, Guangdong Province

携手共进 共创未来

Join hands to create the future

● 项目开发环境

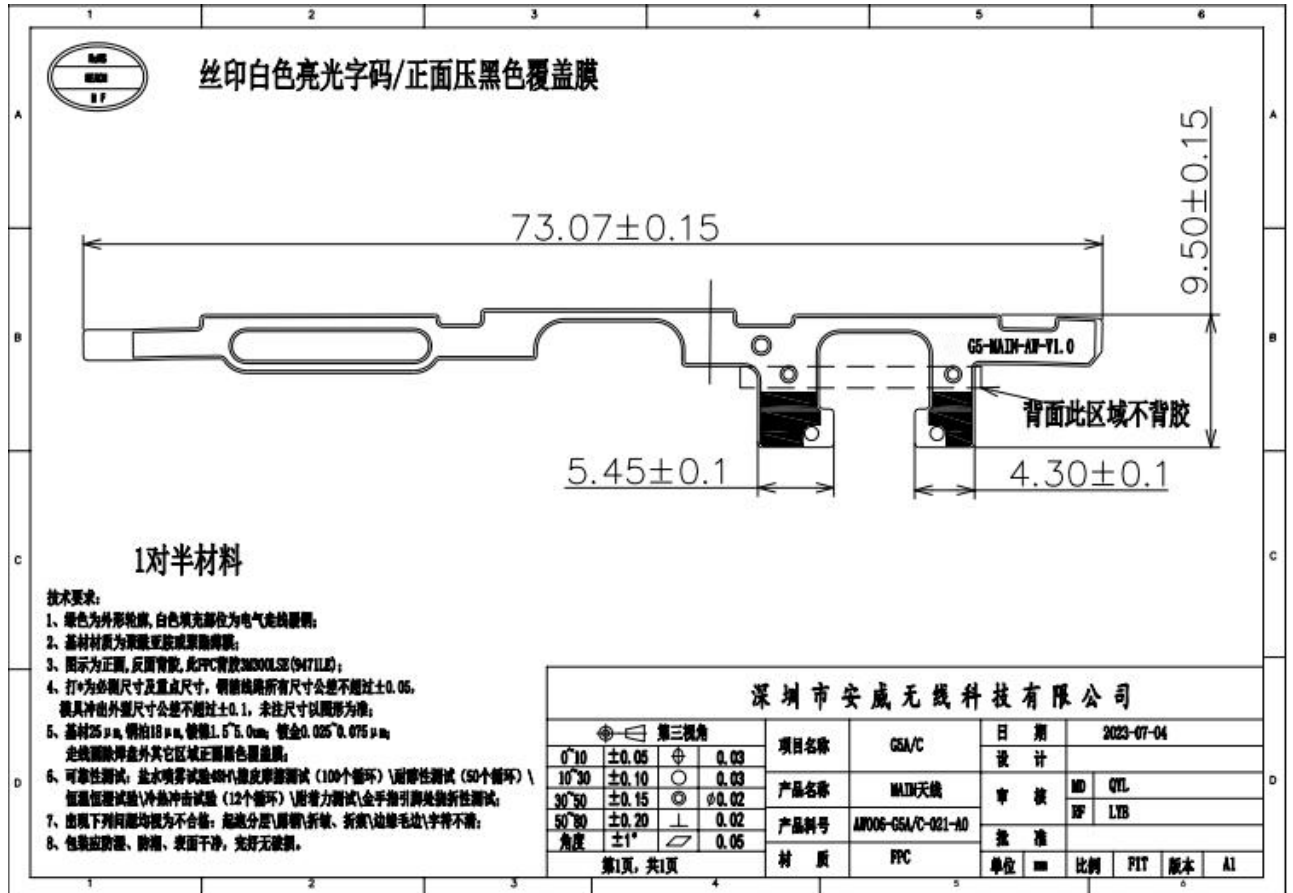
Project development environment



安威无线一直都是您值得信赖且优秀的合作伙伴，我们为您提供全方位一站式的产品以及技术服务！

“质量第一，服务至上”是安威一直以来的发展宗旨

### 主集天线 (MAIN antenna )



工作频段(Working frequency band): 700MHZ~2690MHZ GSM850/900 /1800

WCDMA1/4/5/6/8

FDD1/3/4/5/7/8/12/17/20/28A/B/66 TDD38/40/41

天线匹配(Matcheing network):

The customer brought their own matching, which was not changed

### 分集天线(DIV antenna )

工作频段(Working frequency band): PCS1900/WCDMA B2/LTE B2

123456

ABCD

**1对半材料**

**技术要求:**

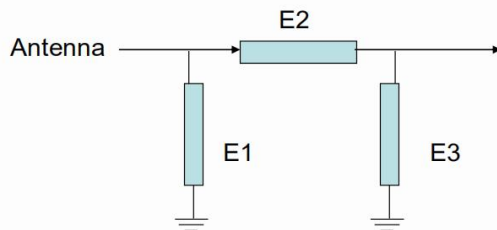
- 绿色为外形轮廓, 白色填充部位为电气走线覆膜;
- 基材材质为聚酰亚胺或聚酰亚胺薄膜;
- 图示为正面, 反面背胶, 此FPC背胶3M300LSE(9471LE);
- 打\*为必须尺寸及重点尺寸, 铜箔线路所有尺寸公差不得超过±0.05, 模具冲蚀外形尺寸公差不得超过±0.1, 未注尺寸以图形为准;
- 基材25μm, 铜箔18μm, 铜厚1.6±0.0mm, 镀金0.025~0.075μm; 走线面除焊盘外其它区域正反面黑色覆膜;
- 可靠性测试: 盐雾喷雾试验(48h)\摩擦试验(100个循环)\耐弯折试验(50个循环)\恒湿恒湿试验\冷热冲击试验(12个循环)\耐着力测试\金手指引脚焊接折性测试;
- 出现下列问题均视为不合格: 起翘\分层\厚薄\折痕\折痕\边缘毛边\字符不清;
- 包装应防震、防潮、表面干净, 完好无破损。

**深圳市安威无线科技有限公司**

第三视角	项目名称	G5A-A	日期	2023-07-04	
0°/10	±0.05	⊕	0.03	设计	
10°/30	±0.10	○	0.03	审核	MD QYL
30°/50	±0.15	⊙	0.02		RF LYB
50°/90	±0.20	⊥	0.02	批准	
角度	±1°	∠	0.05		单位

第1页, 共1页

### 分集天线匹配(Matcheing network)



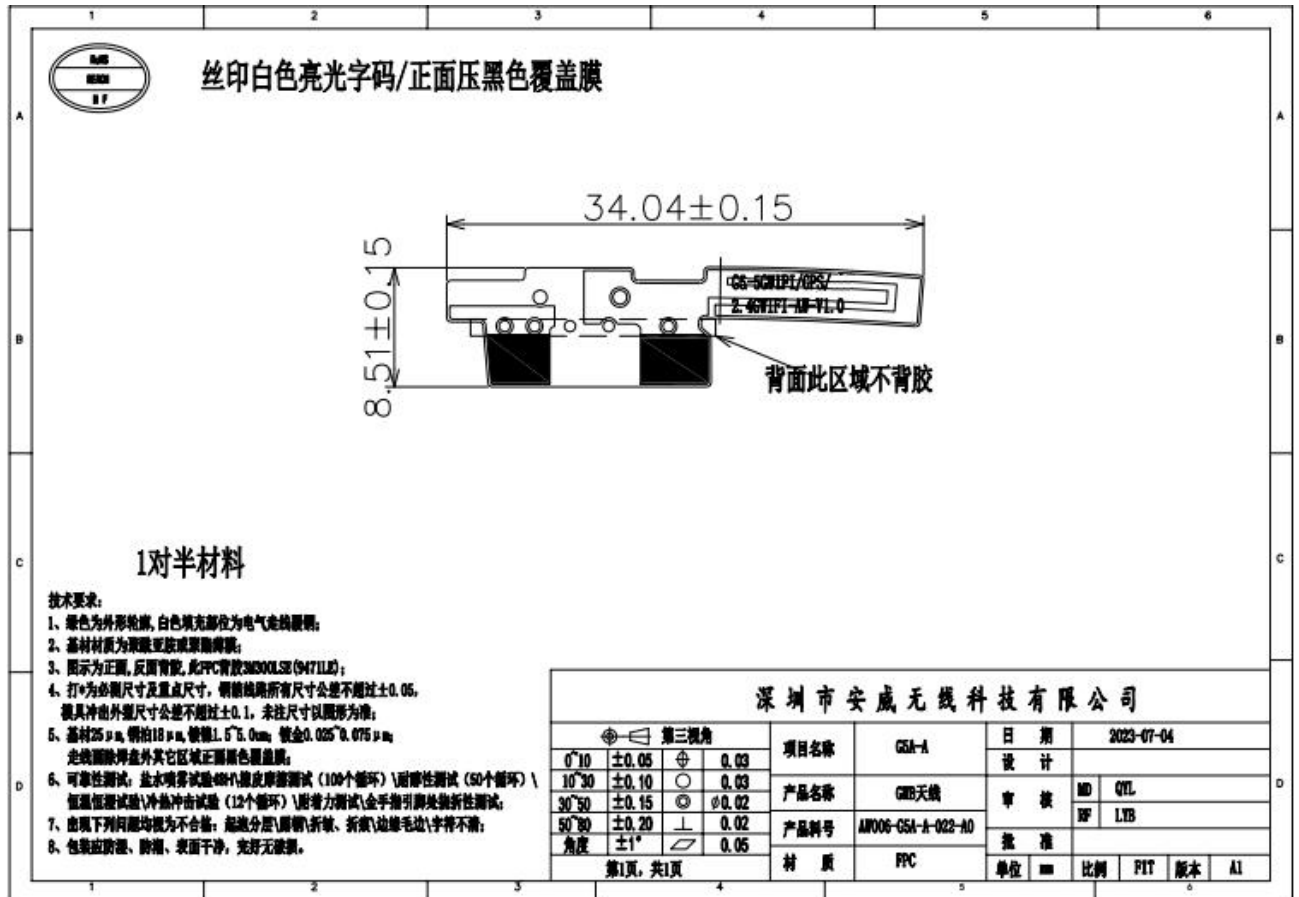
The customer brought their own matching, which was not changed

5GWIFI 天线 (5GWIFI antenna)

GPS 天线工作频段 (Working frequency band of GPS antenna) : 1559MHZ~1616MHZ

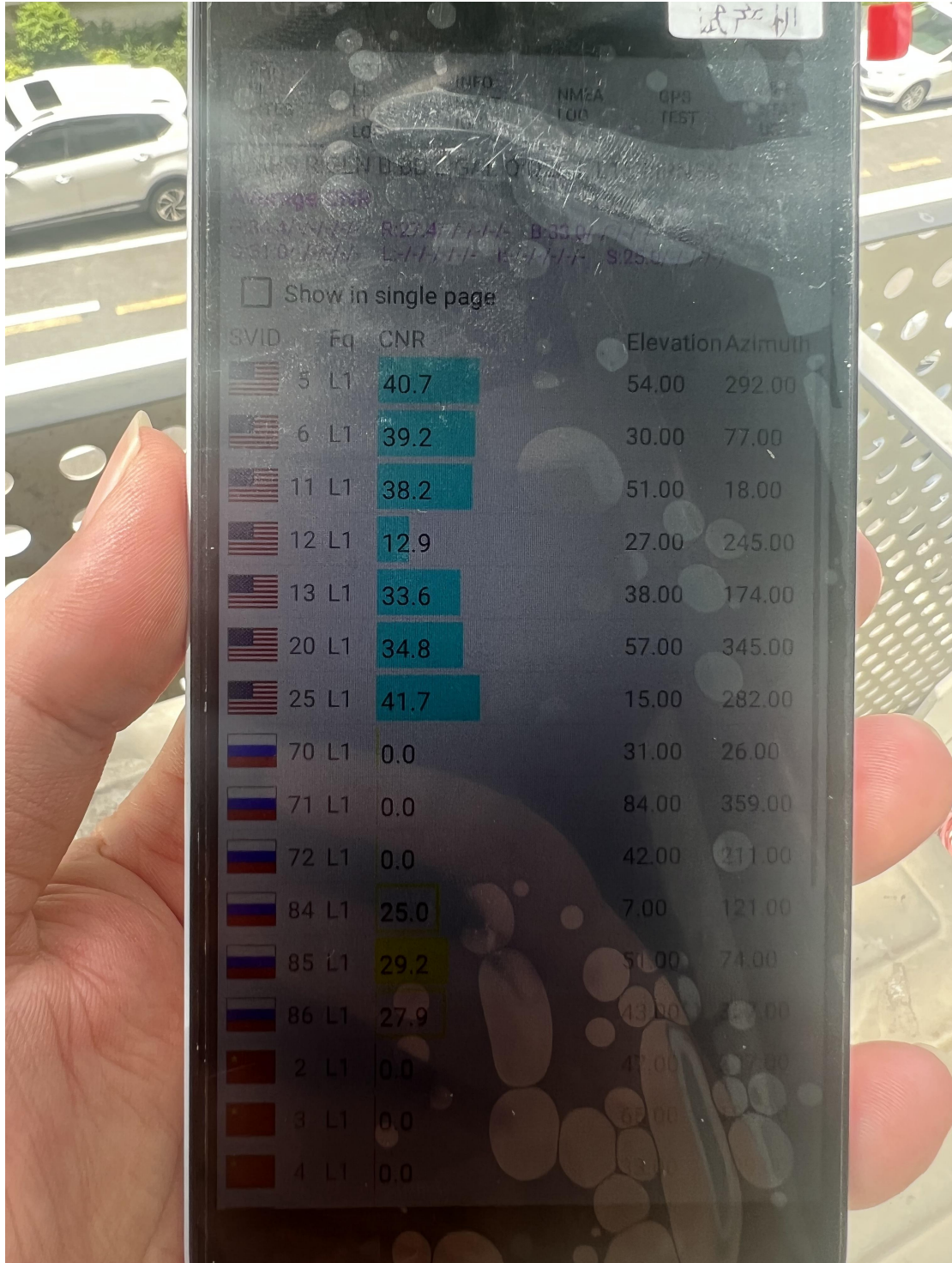
5GWIFI 工作频段 (Working frequency band of 5GWIFI antenna) : 5150MHZ~5850MH

2.4GWIFI 天线 (2.4GWIFI antenna) (Working frequency band of 5GWIFI antenna) : 2400MHZ~2500MH





## GPS 测试(GPS Test)



基本稳定 2 颗 40 以上

WIFI TEST:

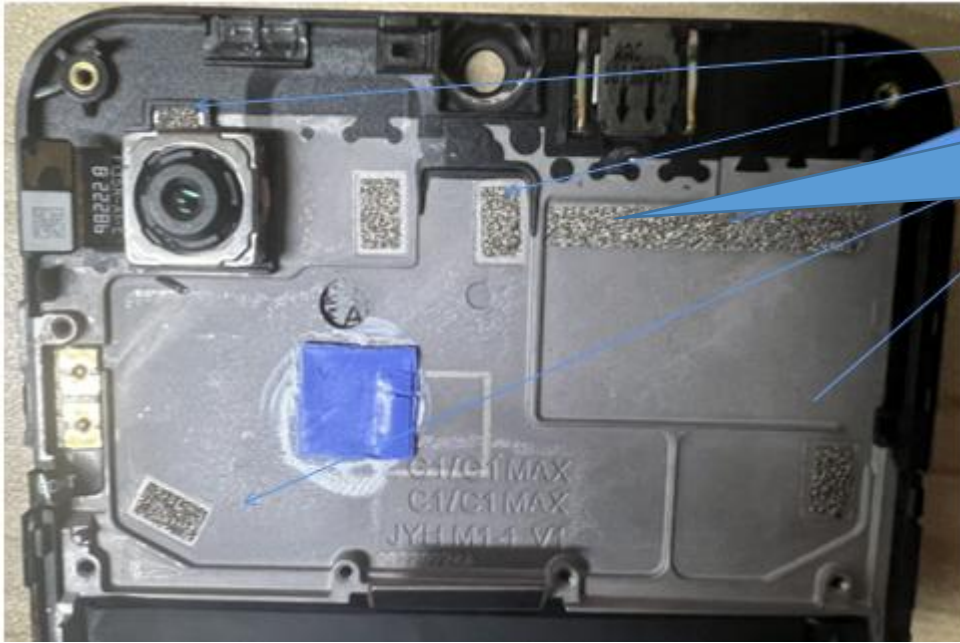
G5A						
BAND	2.4GWIFI			5.8WIFI		
CHANNEL	low	medium	high	low	medium	high
TRP (dBm)	11.4	11.5	11.3	10.4	10.8	11.3
TIS (dBm)	-81.1	-81.2	-81.4	-71.8	-71.5	-72.5



## 天线增益(Antenna gain)

Standard	Band	Frequency	Gain(dbi)
TDD_LTE	TDD_B38	2580	1.79
TDD_LTE	TDD_B40	2310	1.44
TDD_LTE	TDD_B41	2593	1.79
FDD_LTE	FDD_B1	1925	0.95
FDD_LTE	FDD_B2	1855	0.91
FDD_LTE	FDD_B3	1715	0.64
FDD_LTE	FDD_B4	1715	0.64
FDD_LTE	FDD_B5	829	-1.15
FDD_LTE	FDD_B7	2505	1.78
FDD_LTE	FDD_B8	885	-0.83
FDD_LTE	FDD_B12	704	-1.92
FDD_LTE	FDD_B17	709	-1.92
FDD_LTE	FDD_B20	837	-1.24
FDD_LTE	FDD_B28	708	-1.91
FDD_LTE	FDD_B28	723	-1.85
FDD_LTE	FDD_B66	1715	0.64
WCDMA	WCDMA_B1	1922.4	0.95
WCDMA	WCDMA_B2	1852.4	0.91
WCDMA	WCDMA_B4	1715	0.64
WCDMA	WCDMA_B5	826.4	-1.15
WCDMA	WCDMA_B8	882.4	-0.83
GSM	GSM850	824.2	-1.15
GSM	GSM900	890.2	-0.83
GSM	PCS1900	1850.2	0.91
GSM	DCS1800	1710.2	0.63
2.4GWIFI		2412	1.76
5GWIFI		5825	1.23
GPS		1575	1.14
BT		2400	1.76

## 环境处理方式(Environmental treatment)

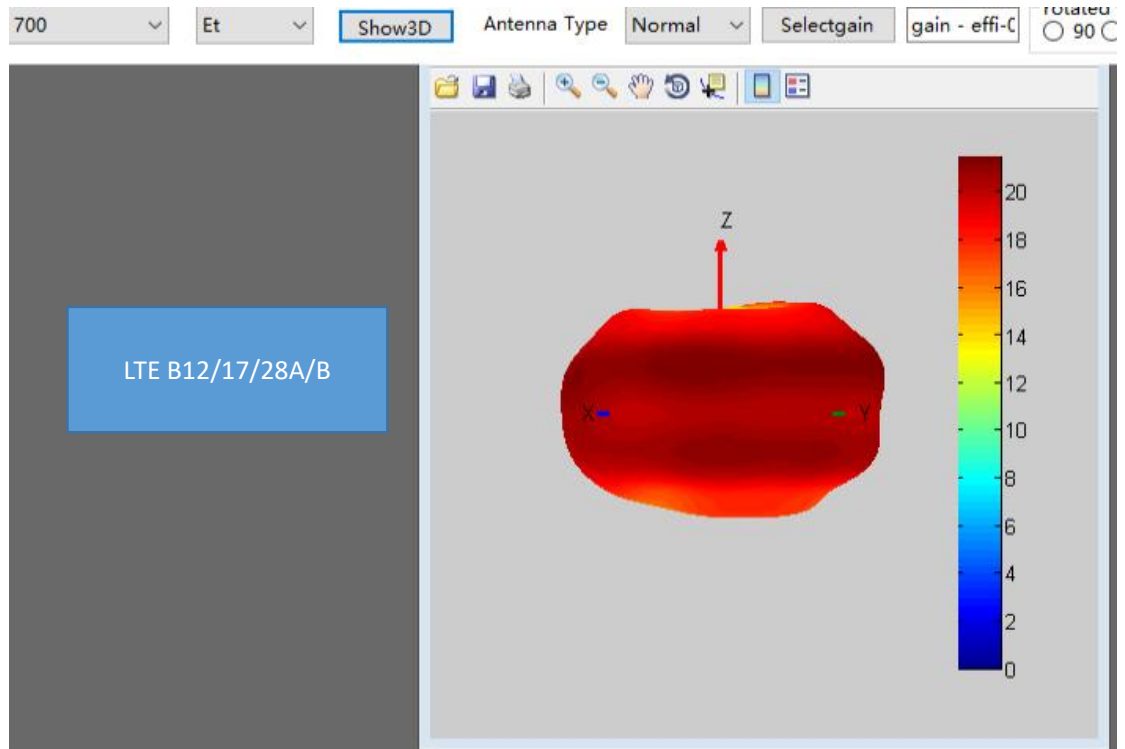


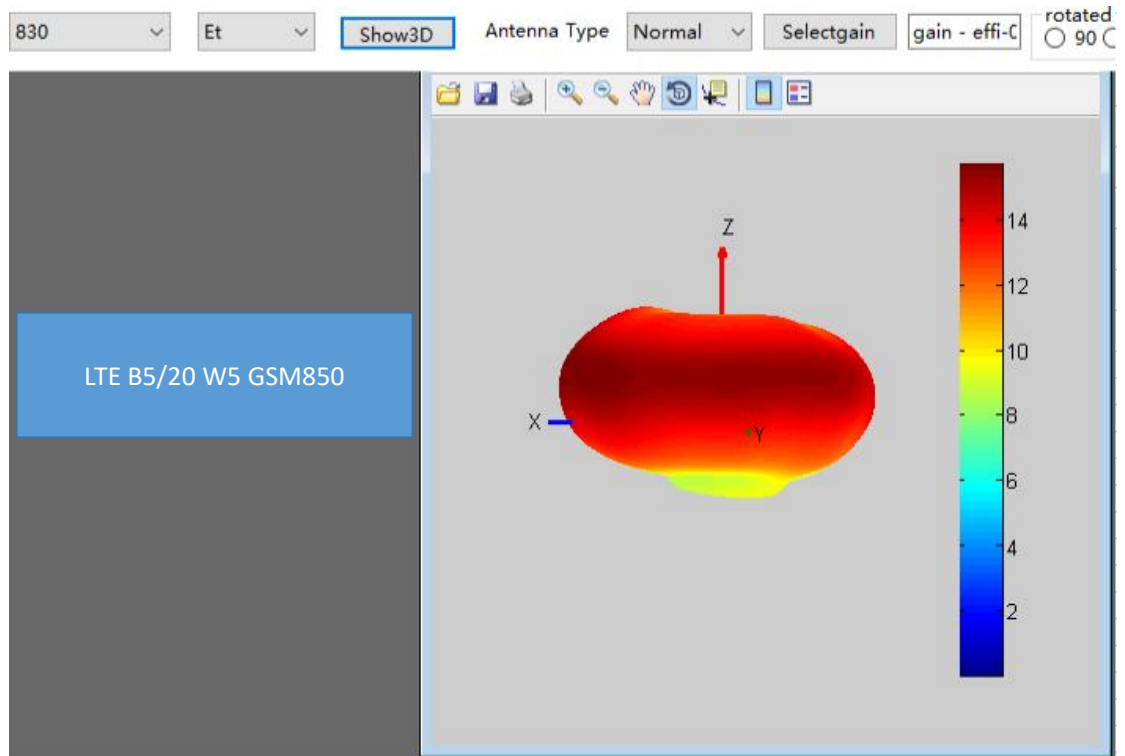
Mainboard  
grounding with  
conductive  
sponge

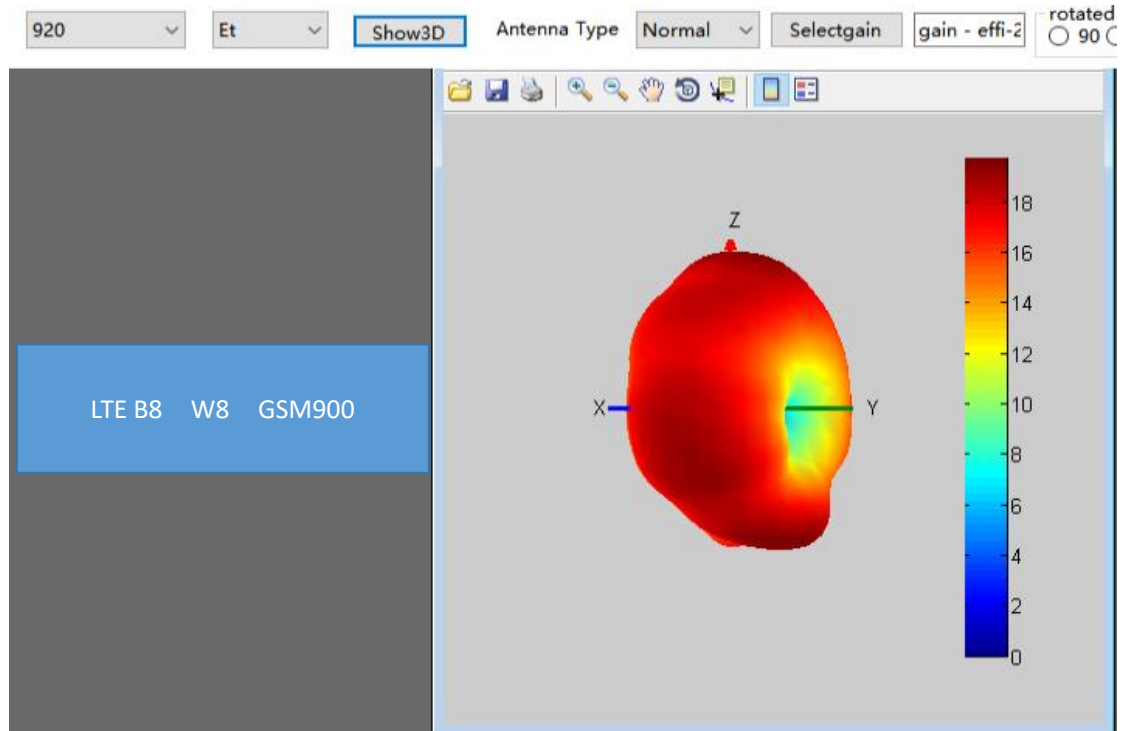


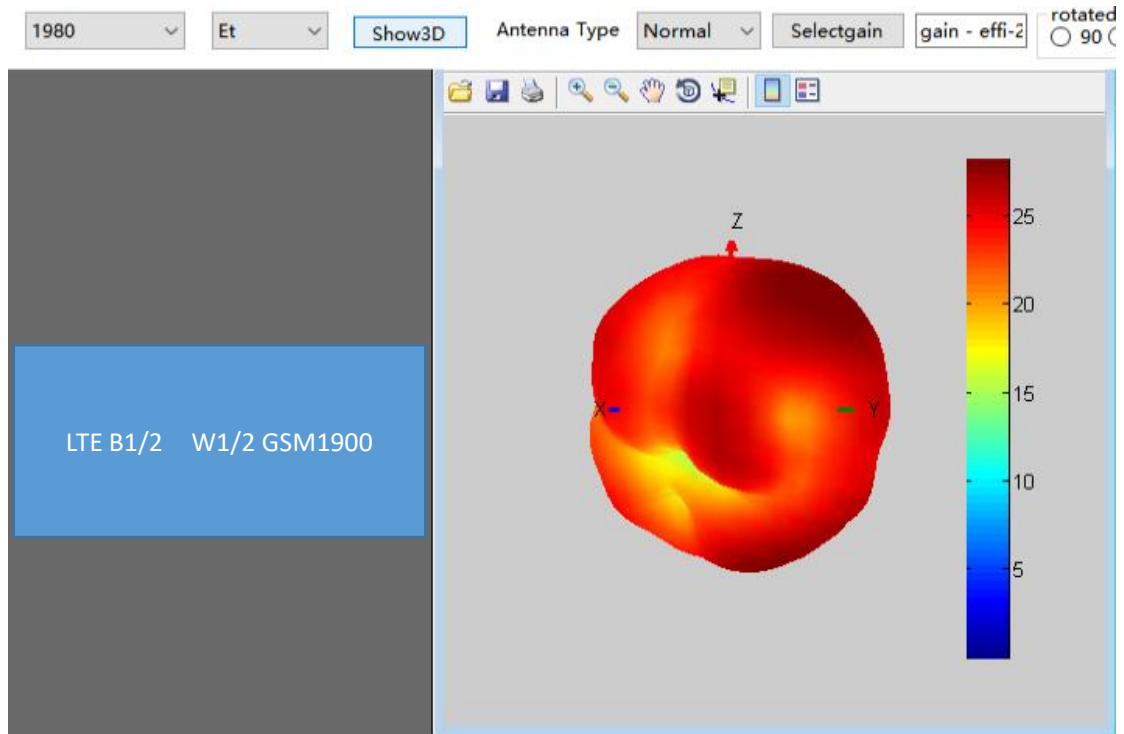
Small board with  
conductive sponge  
grounding

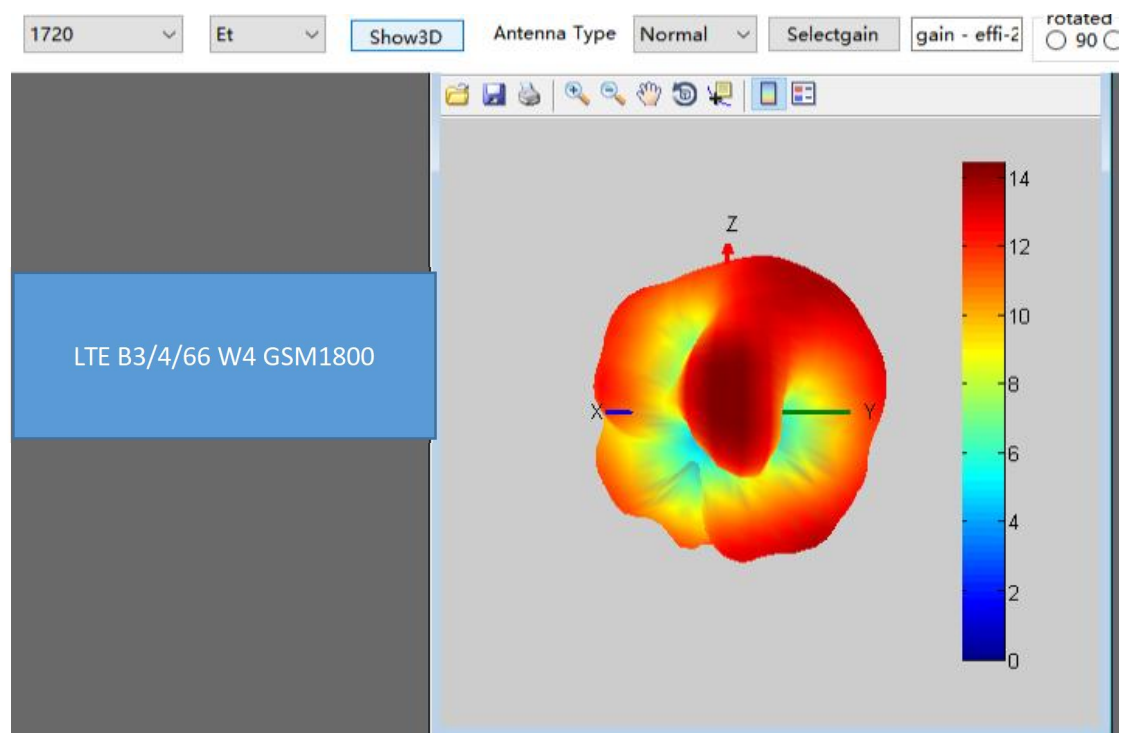
**The Apple and Direction charts are as follows:**

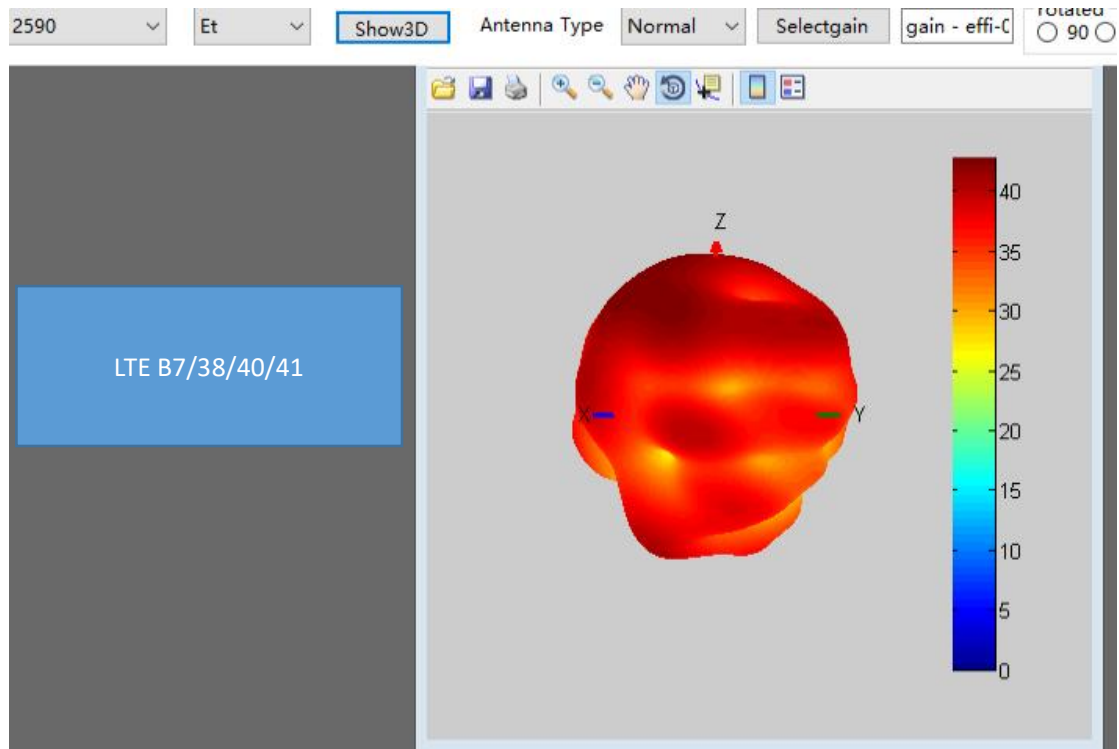




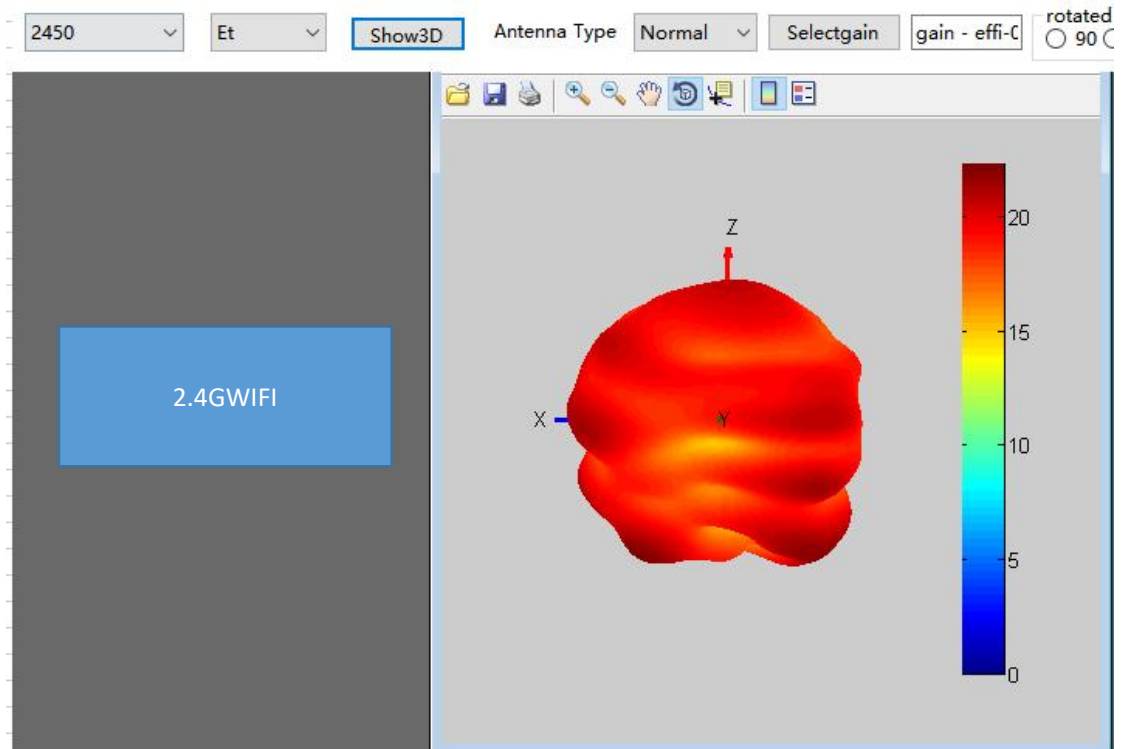


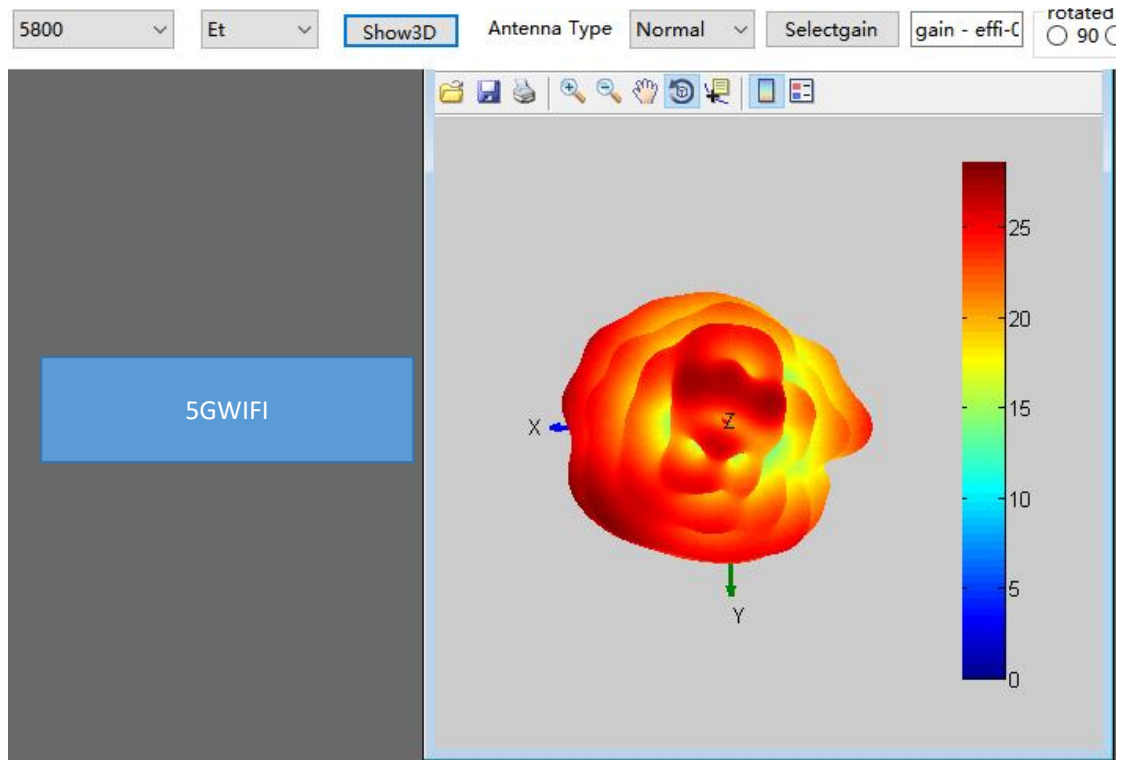














深圳市安威无线科技有限公司

行业领先的一站式通信射频天线解决方案制造商

# The End

此报告中所含的一切信息版权归我司所有，在未得到我司许可下，请勿散播给任何第三方

## 携手共进 共创未来

地址：广东省深圳市龙华新区大浪华宁路颐丰华工业园5栋东座2楼

微信服务号

