

# 深圳市安威无线科技有限公司

ANWEI communication Equipment Co.,Ltd

## 规格书

APPROVAL SHEET

客户 Customer	Youmi	规格型号 Specs	G3 MECHA
安威料号 Part Number		频 段 Frequency Band	G4P+W1/2/4/5/8+FDD1/2/3/4/5/7/8/12/17/20/ 28A/B/+TDD34/38/39/40/41
颜 色 Color	Black	版 本 Edition	REV:A
销 售 Salesperson	Mr.Xie	设 计 Design	Lei Yao Bo
结 构 Structure	QIN YUN LIN	确 认 Confirm	
日 期 Date	2023/4/26	签字日期 Signing Date	

客户确认 Customer confirmation:

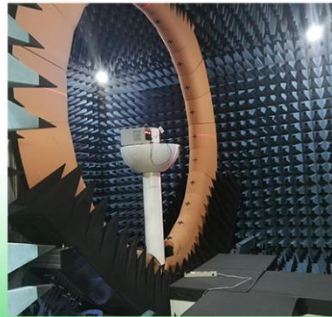
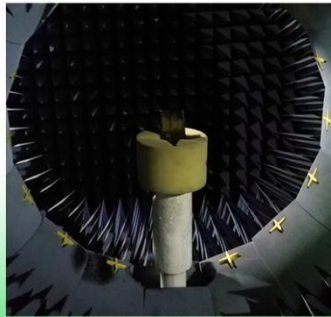
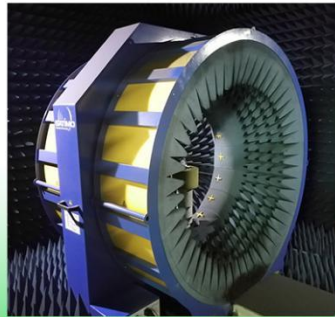
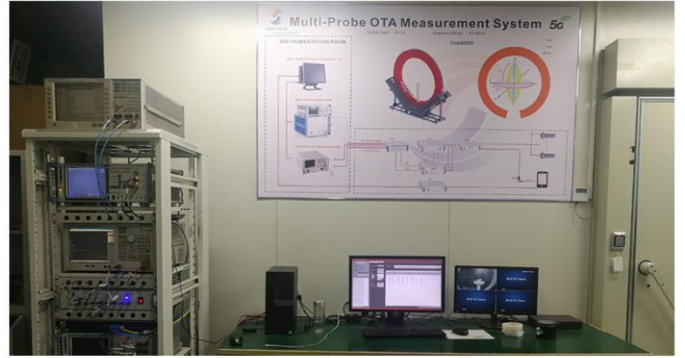
ANT Manufacturers: ANWEI communication Equipment Co.,Ltd  
Address:2nd Floor, East Block, Building 5, Yifenghua Innovation Industrial Park,  
Huaning Road, Dalang Street, Longhua District, Shenzhen City, Guangdong Province

携手共进 共创未来

Join hands to create the future

● 项目开发环境

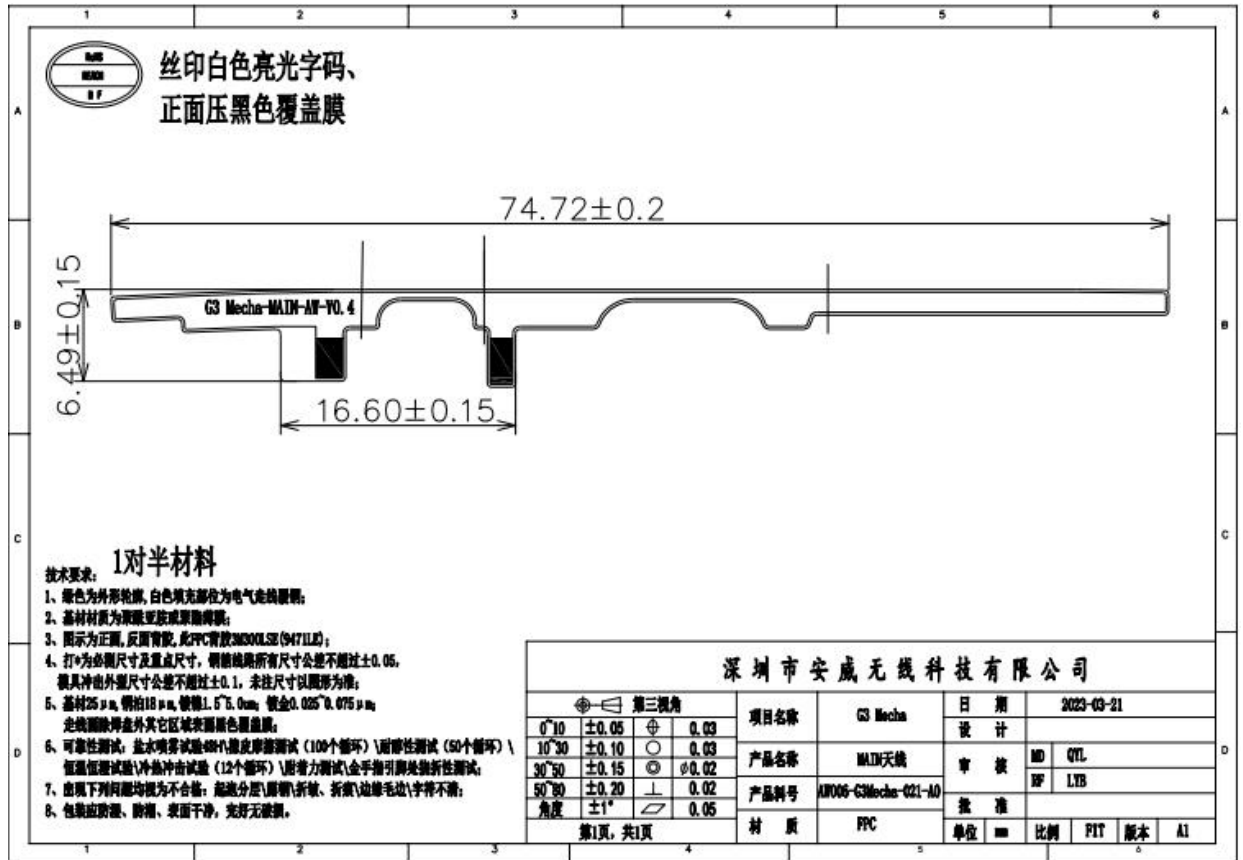
Project development environment



安威无线一直都是您值得信赖且优秀的合作伙伴，我们为您提供全方位一站式的产品以及技术服务！

“质量第一，服务至上”是安威一直以来的发展宗旨

### 主集天线 ( Main antenna )



工作频段(Working frequency band): 700MHZ~2690MHZ GSM850/900

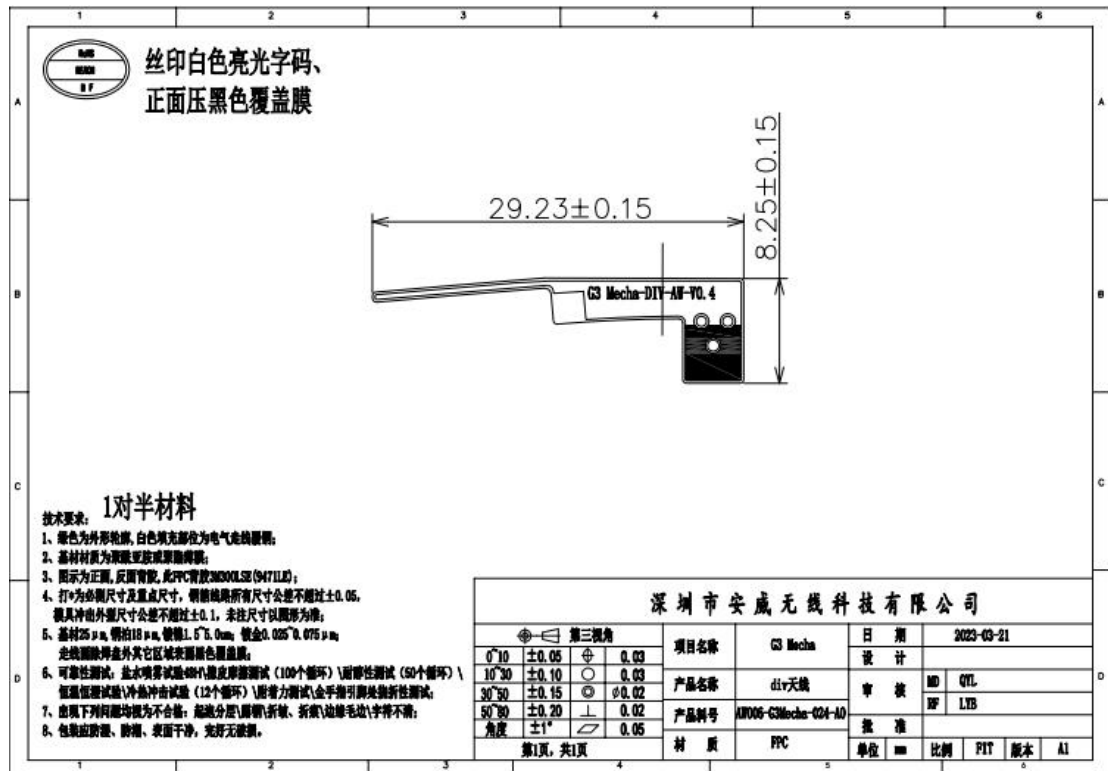
WCDMA 5/8

FDD5/7/8/12/17/20/28A/B TDD38/40/41

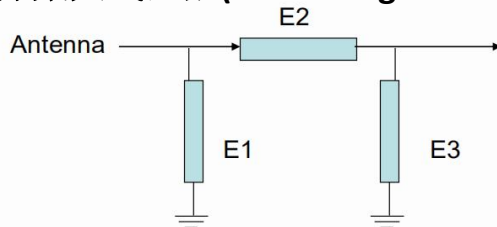
## 分集天线( DIV antenna )

工作频段(Working frequency band): 1700MHZ~2100MHZ

DCS1800/1900 W1/2/4 LTE 1/2/3/4/34/39



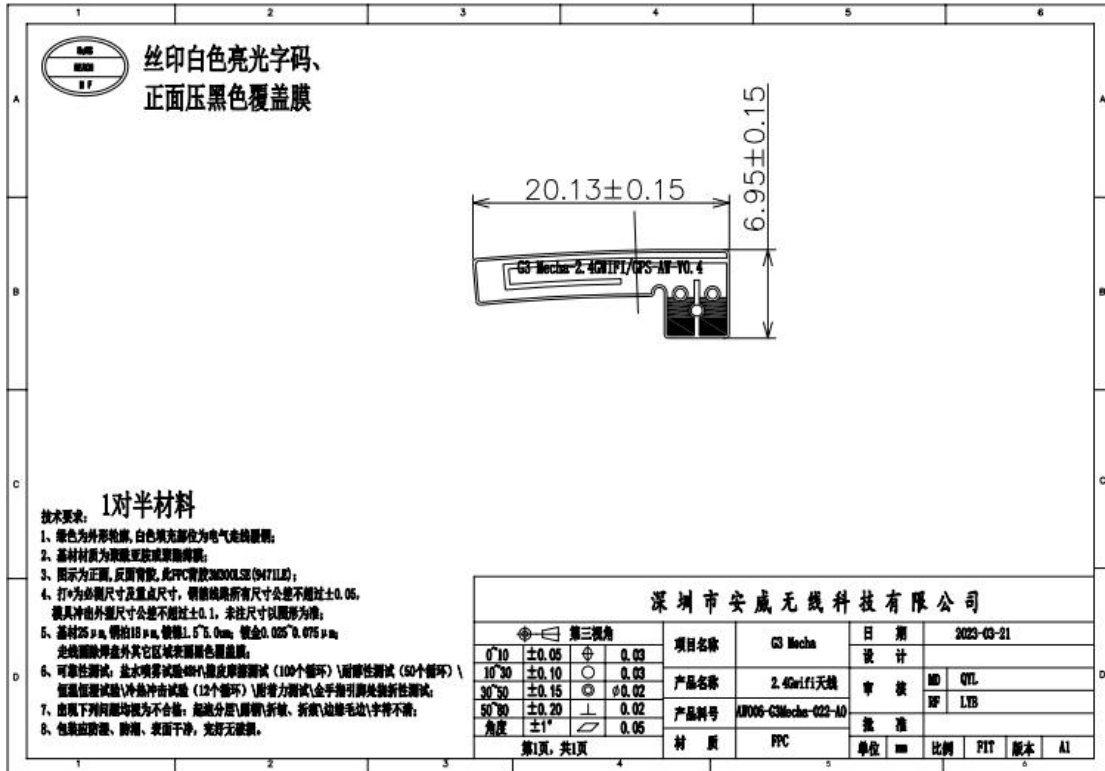
## 分集天线匹配(Matching network)



The match is unchanged

GPS 天线工作频段（Working frequency band of GPS antenna）：1559MHZ~1616MHZ

2.4GWIFI/BT 天线（2.4GWIFI/BT antenna）：2400MHZ~2500MH





### ANWEI ANT TRP&TIS parameter Summary of G3 MECHA

	Channel	TRP (dBm)	TIS (dBm)		Channel	TRP (dBm)	TIS (dBm)		Channel	TRP (dBm)	TIS (dBm)
FDD B1	18050	18.67		FDD B17	23780	16.02		TDD 34	36250	18.62	
	18300	17.92			23790	15.98			36275	18.91	
	18550	18.58	-93.58		23800	15.89	-88.48		36300	18.94	-91.87
FDD B2	18650	19.8		FDD B20	24200	17.15		TDD 38	37850	18.08	
	18900	19.81			24300	17.38			38000	18.52	
	19150	19.9	-92.92		24400	16.33	-85.14		38150	18.35	-89.61
FDD B3	19250	17.61		FDD B28A	27260	16.04		TDD 39	38350	18.88	
	19575	18.33			27370	16.25			38450	18.35	
	19900	18.64	-93.59		27469	15.95	-89.59		38550	18.66	-91.76
FDD B4	20000	18.52		FDD B28B	27410	16.44		TDD 40	38750	17.43	
	20175	18.74			27510	16.26			39150	17.86	
	20350	19.08	-93.12		27600	16.22	-87.63		39550	18.88	-91.57
FDD B5	20450	16.31					TDD 41				
	20525	16.56						40620	18.52	-88.69	
	20600	16.65	-90.92								
FDD B7	20800	20.19									
	21100	19.88									
	21400	19.16	-91.98								
FDD B8	21500	15.55									
	21625	16.47									
	21750	16.77	-88.6								
FDD B12	23060	14.85									
	23095	15.11									
	23130	15.21	-88.74								

	Channel	TRP (dBm)	TIS (dBm)		Channel	TRP (dBm)	TIS (dBm)		Channel	TRP (dBm)	TIS (dBm)
GSM 850	128	24.57							W 1	9612	19.56
	190	24.7								9750	17.93
	251	25.31	-102.45							9888	18.65
GSM 900	1	24.47							W 2	9262	19.62
	62	25.34								9400	19.64
	124	26.17	-98.5							9538	19.64
DCS 1800	512	27.15							W 4	1312	18.62
	698	26.36								1413	18.89
	885	26.05	-105.67							1513	19.67
PCS 1900	512	25.82							W 5	4132	15.8
	661	26.33								4183	15.73
	810	26.13	-104.16							4233	16.18
									W 8	2712	15.74
								2787		16.75	
								2863		16.43	-101.96

BAND	2.4GWIPI			5.8WIPI		
CHANNEL	low	medium	high	low	medium	high
TRP (dBm)	13.4	15.5	15.3	12.4	9.4	14.3
TIS (dBm)	-81.6	-58.5	-66.8	-74.2	-73.0	-75.8

## 天线增益(Antenna gain)

Standard	Band	Frequency	Gain(dbi)
TDD_LTE	TDD_B34	2020	1.52
TDD_LTE	TDD_B38	2580	1.79
TDD_LTE	TDD_B39	1900	1.12
TDD_LTE	TDD_B40	2310	1.44
TDD_LTE	TDD_B41	2593	1.79
FDD_LTE	FDD_B1	1925	0.95
FDD_LTE	FDD_B2	1855	0.91
FDD_LTE	FDD_B3	1715	0.64
FDD_LTE	FDD_B4	1715	0.64
FDD_LTE	FDD_B5	829	-1.15
FDD_LTE	FDD_B7	2505	1.78
FDD_LTE	FDD_B8	885	-0.83
FDD_LTE	FDD_B12	707	-1.85
FDD_LTE	FDD_B17	709	-1.83
FDD_LTE	FDD_B20	837	-1.24
FDD_LTE	FDD_B28	708	-1.81
FDD_LTE	FDD_B28	723	-1.79
WCDMA	WCDMA_B1	1922.4	0.95
WCDMA	WCDMA_B2	1852.4	0.91
WCDMA	WCDMA_B4	1715	0.64
WCDMA	WCDMA_B5	826.4	-1.15
WCDMA	WCDMA_B8	882.4	-0.83
GSM	GSM850	824.2	-1.15
GSM	GSM900	890.2	-0.83
GSM	PCS1900	1850.2	0.91
GSM	DCS1800	1710.2	0.63
2.4GWIFI		2412	1.76
5GWIFI		5825	1.23
BT		2400	1.76



