

FlashLink RTL 22361

New Generation of Temperature Logger



www.friggatech.com

Instructions

Throughout the transportation, please maintain Frigga Ago in seal state (do not tear open the package).

1. Start:

Long press "Start/Stop" button till red & blue LED indicators flash, the device is ready. Start delay is 15 min. (In this stage blue led will flash every 10 sec.), after delay time, the LED stop and the device start to record the temperature data. (Using default thresholds 0~30 °C). **Usage method is same as traditional USB logger.**



2. Setting:

Thresholds can be changed via cloud platform. On the page "Device Setting", we can:

- Change the temperature thresholds
- Add alarm notification personnel
- Share equipment to someone
- Setting position notification
- Set up automatic flight mode



3. Transport:

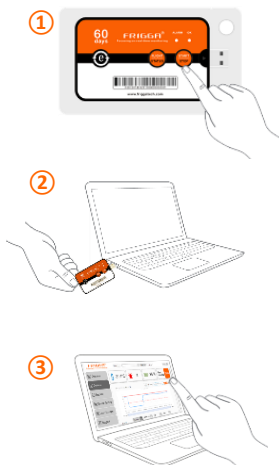
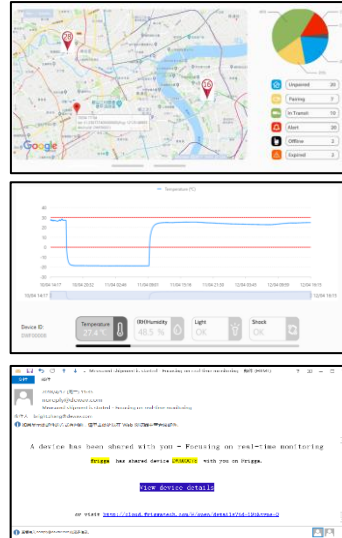
Put the device into the goods and begin to transport.

Warning: The device can not be recharged.

4. Monitoring:

Whether you set up the equipment or not, you also can monitor the temperature, location, route on the cloud platform.

- When the temperature is out of limit, the cloud platform will notify the relevant person by mail or SMS.
- Notify the presupposed person when the equipment reaches the designated location.
- When the equipment arrives near the designated airport, device will enter the flight mode automatically.



5. Stop:

Three ways to end journey:

- ① Long press "Start/Stop" button till red & blue LED indicators flash, the device is ending.
- ② Tear open the wrapping, plug in the logger into PC.
- ③ Via cloud platform, inform the device to stop, and the device will respond within one hour in a good signal environment.

6. Report:

- ① When stop record data, device will generate PDF report automatically. Via USB connect with PC, can access it directly.
- ② On the Frigga cloud platform, the whole transportation data will be backed up, and can be viewed through device ID and transportation time.



Key Features



New experience of temperature logger,
USB logger + Real-time cloud



Keeping all the usage habits of USB data logger



State(location, temperature, movement direction)
of goods is in hand



Improve transportation efficiency and reduce
the damage of goods with real-time monitoring



Date storage and analysis automatically via
Frigga cloud

Contact



www.friggatech.com



contact@dewav.com



+86 21 58820022



cloud.friggatech.com

FCC Statement

This device complies with Part 15 of the FCC Rules. Operation is subject to the following two conditions: (1) this device may not cause harmful interference, and (2) this device must accept any interference received, including interference that may cause undesired operation.

Changes or modifications to this unit not expressly approved by the party responsible for compliance could void the user's authority to operate the equipment.

NOTE: This equipment has been tested and found to comply with the limits for a Class B digital device, pursuant to Part 15 of the FCC Rules. These limits are designed to provide reasonable protection against harmful interference in a residential installation. This equipment generates, uses and can radiate radio frequency energy and, if not installed and used in accordance with the instructions, may cause harmful interference to radio communications. However, there is no guarantee that interference will not occur in a particular installation. If this equipment does cause harmful interference to radio or television reception, which can be determined by turning the equipment off and on, the user is encouraged to try to correct the interference by one or more of the following measures:

-- Reorient or relocate the receiving antenna.

- Increase the separation between the equipment and receiver.
- Connect the equipment into an outlet on a circuit different from that to which the receiver is connected.
- Consult the dealer or an experienced radio/TV technician for help.

This device and its antenna(s) must not be co-located or operation in conjunction with any other antenna or transmitter.

To maintain compliance with FCC's RF Exposure guidelines, This equipment should be installed and operated with minimum distance of 20cm from your body.