

SEREONIC[®] Bluetooth[®] TV Speaker

OPERATING GUIDE



OPERATING GUIDE Model BT-100

Thank you for purchasing this product.
Please read before use.
Keep this manual for future references.

Thank you for purchasing the Sereonic™ Bluetooth® TV Speaker. Please read this operating guide very carefully before use and keep it for future reference. If you have any questions, please feel free to contact our Customer Care Department.

Toll-Free Help Line: 866-376-9271 (8AM-5PM PST, M-F)

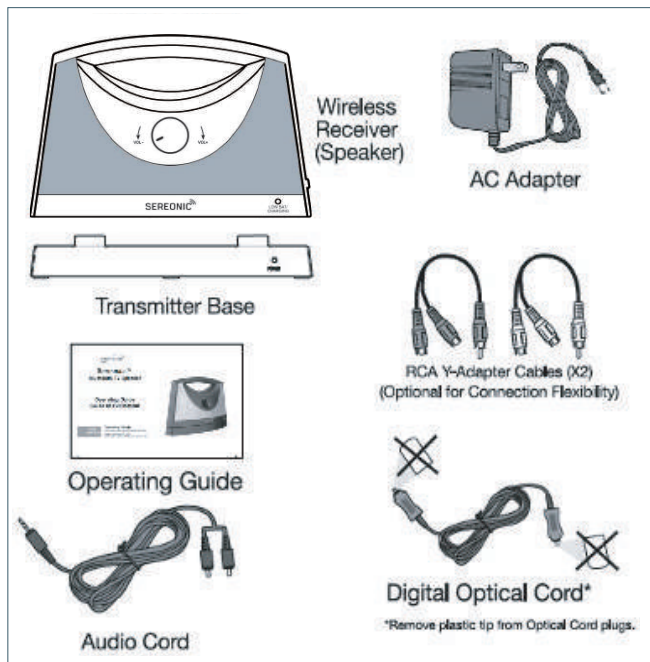
IMPORTANT SAFETY INSTRUCTIONS:

Please read these instructions carefully before using the Sereonic TV Speaker.

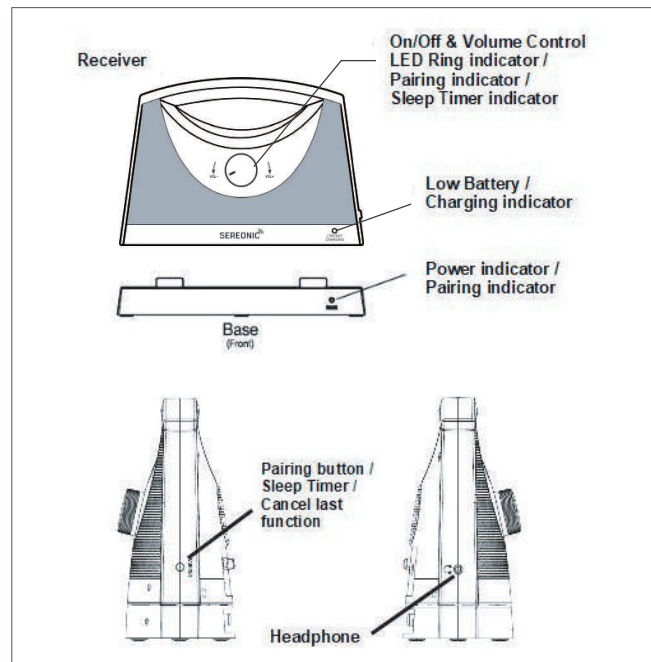
- Always keep the system dry. Do not immerse in water.
- For your safety, do not attempt to open the unit or battery compartment. Attempting to open or opening the battery compartment violates your warranty.
- Sereonic TV Speaker uses a lithium ion battery. Please observe the safety and handling instructions for the lithium ion batteries. Please dispose of the unit/used batteries properly, following any local regulations. Do not dispose of the unit/used batteries in the household trash. Do not incinerate. Take the equipment to a nearby recycle center.

- Do not unplug by pulling on cord. To unplug, grasp the plug, not the cord. Unplug from outlet when not in use and before servicing or cleaning. Do not operate any device with a damaged cord or plug, or after the device malfunctions, or is dropped or damaged in any manner. Return device to the nearest authorized service facility for examination, repair or electrical or mechanical adjustment.
- Sereonic TV Speaker is intended for home and personal use only.

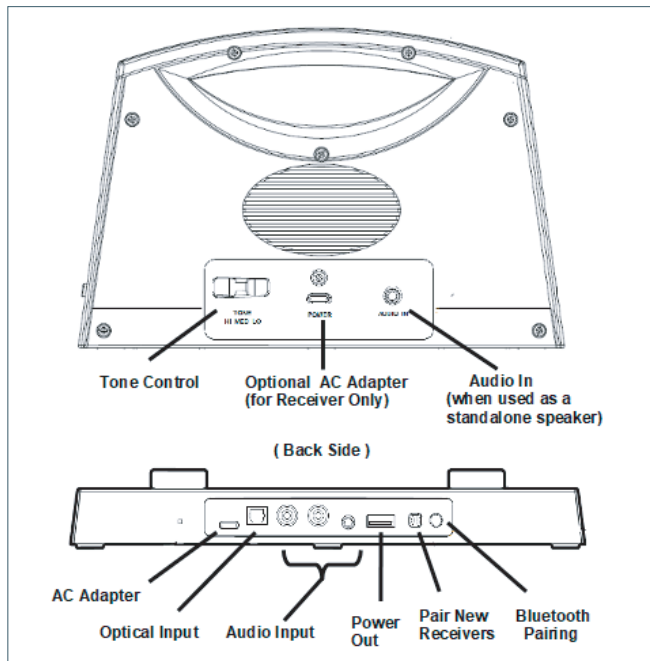
PACKAGE CONTENT CHECK



FEATURE IDENTIFICATIONS

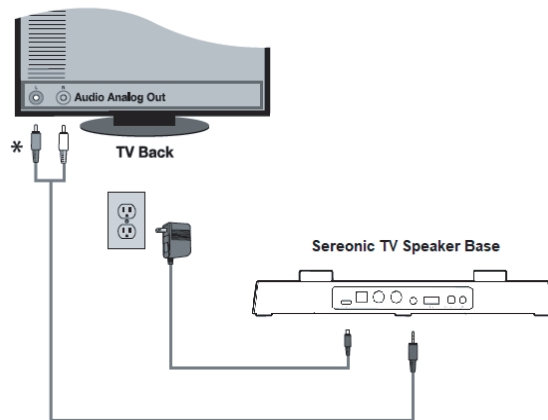


FEATURE IDENTIFICATIONS (continued)



CONNECTIONS & SETUP

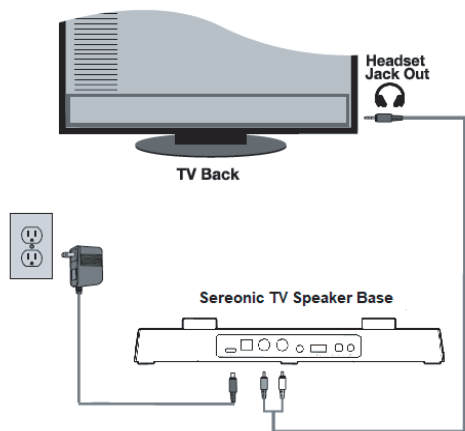
- TV with AUDIO ANALOG OUT, connect Sereonic TV Speaker to the TV as shown:



*If Audio Connections Are Occupied By Another Device, Use Y Splitters (provided) As Shown In Diagram A.

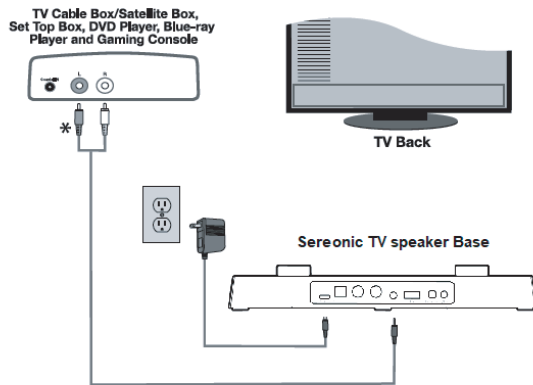
CONNECTIONS & SETUP (continued)

- 2.** TV with no AUDIO ANALOG OUT and a headset jack, connect the Sereonic TV Speaker using the headset jack on your TV.



CONNECTIONS & SETUP (continued)

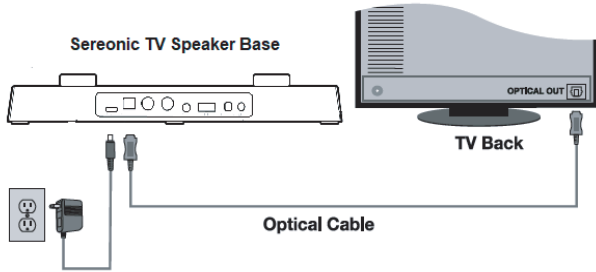
- 3.** TV with no AUDIO ANALOG OUT can connect the Sereonic TV Speaker to your TV through the AUDIO ANALOG OUT on your Cable Box, Satellite Box, Set Top Box, DVD Player, Blue-ray Player or Gaming Console (sold separately), as shown.



*If Audio Connections Are Occupied By Another Device, Use Y Splitters (provided) As Shown In Diagram A.

CONNECTIONS & SETUP (continued)

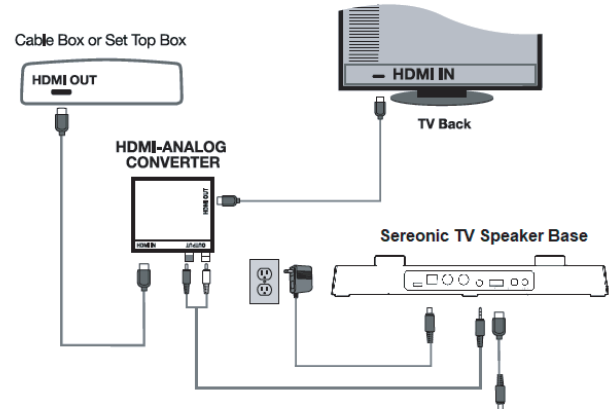
- 4.** TV with a digital optical out port, connect the Sereonic TV Speaker to your TV using the optical cable as shown.



Note: The digital optical input on the Sereonic TV Speaker Base works with **PCM audio format ONLY**. Please set your TV to **PCM digital output**. Contact your TV manufacturer for assistance if necessary.

CONNECTIONS & SETUP (continued)

- 5.** For TV's using a HDMI Input Port: Connect Sereonic TV Speaker to your TV using a HDMI-ANALOG Converter (sold separately*)



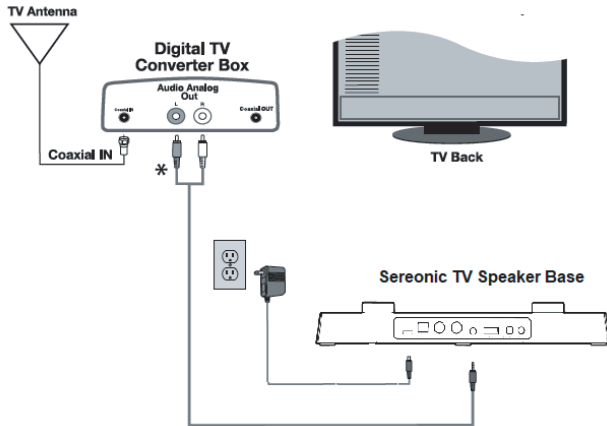
Note: If Audio Connections Are Occupied By Another Device, Use Y Splitters (provided) As Shown In Diagram A.

*This item is sold separately and is available from Serene Innovations

Converter Power Adapter Cable *

CONNECTIONS & SETUP (continued)

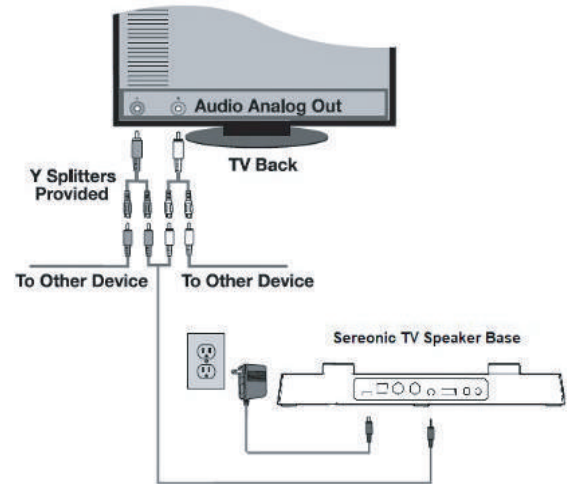
- 6** For an older model TV with a Digital TV Converter and antenna (or “rabbit ears”), connect the Sereonic TV Speaker to your TV through the Digital TV Converter, as shown:



Note: If Audio Connections Are Occupied By Another Device, Use Y Splitters (provided) As Shown In Diagram A.

CONNECTIONS & SETUP (continued)

- * **Diagram A:** If Audio Connections Are Occupied By Another Device, Use Y Splitters (provided) As Shown:

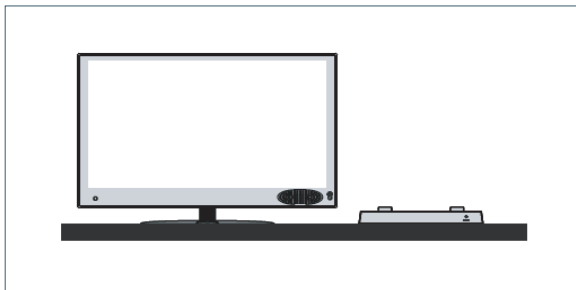


Dolby Digital 5.1 and Pulse Code Modulation (PCM) TV Output:

Newer TV's have the option to set digital audio output to either Dolby or PCM (You can find what type of output your TV has in the audio/-sound section of your TV manual). The Sereonic TV Speaker base, or the DAC-202B only works with PCM audio format, simple set your TV to PCM digital output for the converter to work. If you cannot switch to PCM, contact our customer service for assistance.

Placement of Sereonic TV Speaker Base:

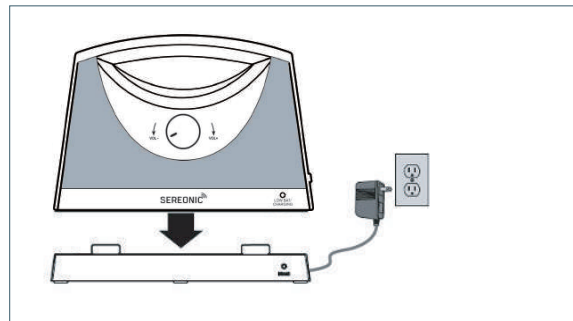
It is best recommended to place the base of the Sereonic TV Speaker base on top of your TV stand as shown below.



BATTERY CHARGING

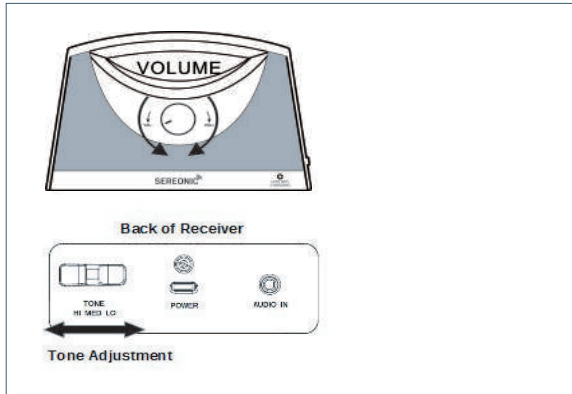
Place the receiver on the base (as shown) for charging for 4+ hours before first use. During charging, the Low Battery/Charge indicator blinks. When it is fully charged, the indicator light will stop blinking and stay steadily lit. A fully charged battery will give you about 8 hours of listening time (at moderate volume).

When the Receiver is not in use or when the Low Battery indicator blinks, place the Receiver back on the base for recharging.



OPERATIONS

1. Rotate the knob to turn Receiver On or Off and to adjust its volume. The ring light will be on.
2. The Sereonic speaker volume control works independently from your TV speakers, you can turn down your TV speakers to low or off. On some TV's, you may need to use your remote to go into the TV menu to achieve an optimal audio/speaker setting. Please refer to your TV user manual for details.



3. To conserve battery power, the Receiver will turn itself off if no audio signal is received from the base transmitter for a period longer than 5 minutes, (example, the TV is turned off). The volume knob ring light will be off.

Note

The Receiver will **not turn itself back on automatically even** when the transmitter audio signal is received after the auto powered off. Rotate the volume knob to turn off the Receiver and then turn it on again to reconnect with the transmitter base.

4. Set the Tone Control (on the back of the Receiver) to a position that enables you to hear & best understand the audio dialog.

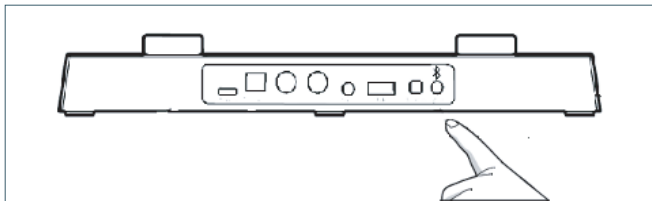
PAIRING & CONNECT

Your Sereonic TV Speaker has already been paired and ready to go right out of the box. In case that a re-pairing is needed between the Receiver and the base, follow the steps described below in "Additional Receivers Pairing".

BLUETOOTH PAIRING

Your Sereonic TV Speaker also has the bluetooth function built-in that can be used with your bluetooth device, such as your smartphone, tablet, and mobile devices.

1. Power on the base and turn on the Receiver.
2. Press and hold the bluetooth pairing button on the back until the base pairing indicator starts blinking.
Pairing period is about 3 minutes



3. On your bluetooth device, go to Settings > Bluetooth, check Bluetooth is On.
4. Scan / Search for available devices, and select "TV-SB" when it appears under DEVICES.

5. The base pairing indicator will stop blinking when pairing is complete, and you can now play your audio from your device through the Sereonic TV Speaker.
6. Repeat the above steps if not successful.

Note

Your bluetooth device instructions may vary. When the base is powered up, it will search and try to make connection to the last bluetooth device it has paired with until time expiration.

The bluetooth connection audio signal will have priority over the wired audio connections.

Important

Make sure the volume level is set high on your bluetooth audio source device. The volume on the Sereonic TV Speaker and your audio source device both need to be set to highest level for the loudest volume. The volume control on your bluetooth audio source device and the Sereonic TV Speaker works independently of each other.

ADDITIONAL RECEIVERS PAIRING

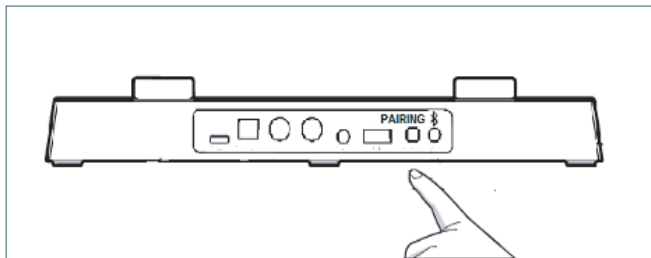
You can add up to 10 Receivers to work with your base. Each added Receiver, must be "pair" it with the base as follows:

Make sure your new Receiver is fully charged.

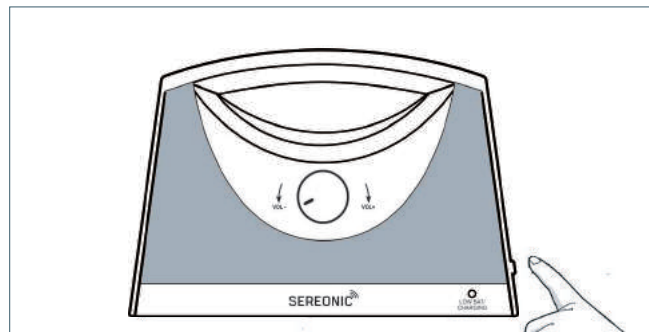
Make sure your current base and Receiver is working properly and audio is playing on the Receiver.

Continue the audio playing to the Base and Receiver.

1. Turn on the new Receiver.
2. Press and hold the PAIRING button on the back of the base until the pairing indicator starts blinking. It will start searching for the new Receiver. Pairing period is about 3 minutes.



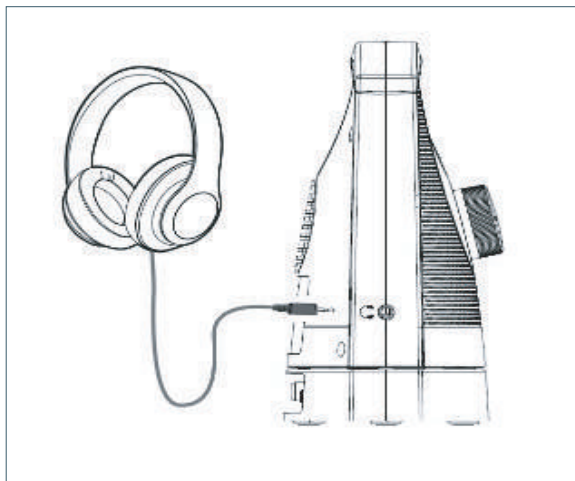
3. Press and hold the PAIRING button on the side of the new Receiver until the volume knob ring indicator starts blinking.



4. As soon as pairing is successful, the new Receiver's pairing indicator will stop blinking, and the audio sounds will start playing.
5. Repeat the steps again if pairing was not successful.

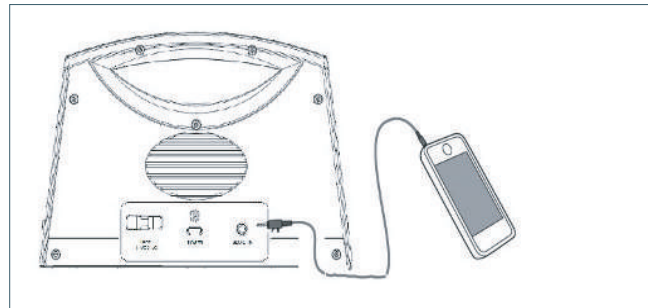
USING A HEADPHONE

Plug in your headphone to the Headphone jack. No sound will be emitted from the speakers. Adjust the headphone volume by rotating the Volume knob.



RECEIVER AS A STAND-ALONE SPEAKER

Connect your audio source to the Audio Input jack on the back of the Receiver as shown. This input will override the transmitter base audio signals.



Important

Make sure the volume level is set high on your audio source device. The volume on the Sereonic TV Speaker and your audio source device both need to be set to highest level for the loudest volume. The volume control on your audio source device and the Sereonic TV Speaker works independently of each other.

RECEIVER SLEEP TIMER

The Sereonic TV Speaker is designed with a built-in, one hour sleep timer to gently reduce the speaker volume to allow you to fall asleep and will automatically power off the speaker.

Turn On the One hour Timer

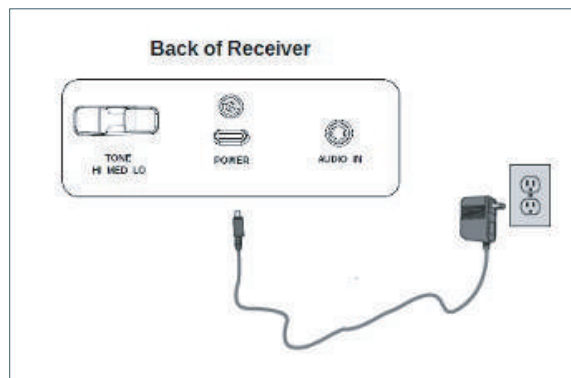
1. Press the SLEEP button once to start the timer.
The volume knob ring light will start flashing.
2. At certain timer intervals, the speaker volume will be gradually reduced to help you fall asleep.
3. The receiver will be turned off when timer has expired.
4. To enable the Receiver sound again after the timer has expired, turn the volume knob all the way to Off, and then back On again. The Receiver will re-connect with the base, and audio sound will be played.

Turn Off Timer

1. You can only turn off timer after it has started.
2. Press the SLEEP button once to turn off the timer. The volume knob ring light will stop flashing.

ADDITIONAL POWER SOURCE FOR THE RECEIVER

Purchase an additional AC adapter (available from Serene), and plug it into the Receiver as shown. This way, you can place and keep the Receiver at the same location without the need to return it to the Base for recharging.



TROUBLESHOOTING

No sound from the Receiver

Check all connections to ensure that all the cords are firmly connected at the back of the base and TV. Also, confirm that the Receiver is not more than 100 feet away from the base.

There is sound from the TV, but no sound from the Receiver

Check your TV speaker setting by going into the TV Menu, using your TV remote and ensuring the TV is sending audio signals to the Base.

The Low Battery/Charging indicator keeps blinking on the Receiver

This indicates that the battery is low and needs to be placed on the base for recharging. When fully charged, the blinking will stop. If the blinking does not stop, check to make sure the Receiver is firmly connected and properly seated on to the Base.

CLEANING AND MAINTENANCE

Unplug the AC adapter from the wall. Then use a dry, soft cloth to clean and dust the outside surfaces and the charging contacts. Do not immerse the Receiver in water.

OPTIONAL ACCESSORIES

The following accessories enhance your TV listening experience. Please contact Serene Innovations or our nearest dealer to order:

 <p>BT100-RX Extra Receiver for added convenience and mobility</p>	 <p>BT100-APTR Extra AC adapter for plug-in charging of your receiver</p>
 <p>HAC-100</p>	<p>TV HDMI Analog Converter (for connection the BT-100 to your TV using HDMI port, refer to user's guide.)</p>
 <p>DAC-202B</p>	<p>TV Digital Audio Connector (for connecting the BT-100 to your TV using Optical Output port, refer to user's guide.)</p>

SPECIFICATIONS

Bluetooth Version	v5.0
Bluetooth Profiles	A2DP
RF Transmission	2.4GHz Frequency
Speakers	2 x 5W Class D
Frequency Response	20Hz – 20KHz
Battery	1 x 18650
Charge Time	4+ hours
Receiver Range	over 100 ft (30m) open field
Bluetooth Range	33 ft (10m)
AC Adapter	Input 100-240VAC/50-60 Hz Output 5VDC / 2000 mA
Listening Time	about 8 hours (@ 50% level)
Dimensions	9"x7"x3.25" (24x11x8 cm)
Weight	about 1.7 lbs. (800g)

Specifications are subject to change without notice.

WARRANTY/SERVICE INFORMATION

Your Sereonic™ TV Speaker comes with a one year limited warranty. We warrant during the warranty period from the date of purchase to the original consumer that the Sereonic TV Speaker will be free from defects in materials and workmanship under intended home use. In the event that the Sereonic TV Speaker fails to function properly within one year of original purchase due to defects in material or workmanship, return the unit (freight prepaid) with proof of purchase (sales receipt or packing slip, no exceptions) to Serene Innovations.

Serene Innovations will either repair or replace the unit (with a refurbished unit or unit with equal condition) and return it to you (using UPS/USPS ground shipping) at no cost to you (there will be a nominal additional shipping charge if it is shipped to outside the 48 Continental U.S. States).

This warranty does not apply to any product that has been accidentally damaged due to abuse, misuse, negligence, use or electrical frequency or voltage other than marked on product and/or described in this manual. Defects or errors caused by unauthorized alterations, repairs and/or tampering are also not covered by this warranty.

Any authorized returned product must be accompanied with proof of purchase and a brief description of the problem. For out of warranty repair and service, please contact our Customer Care Department for further details.

Incidental of Consequential Damages

Neither Serene Innovations, Inc. nor the retailer, dealer or selling distributor has the responsibility for any incidental or consequential damages, including, without limitation, commercial loss of profit or for any incidental expenses, loss of time or inconvenience. Some states do not allow exclusion or limitation of incidental or consequential damage, so the above limitation or exclusion may not apply to you.

This warranty does not apply to any product that has been accidentally damaged, abused, misused or neglected, used on electrical frequency or voltage other than marked on product and/or described in the manual. Defects or errors caused by unauthorized alterations, repairs and/or tampering, are also not covered by this warranty.

This Warranty gives you specific legal rights and you may also have other legal rights that vary from state to state. If a defect covered by this warranty should occur, promptly contact a Customer Care

Representative by phone, or log onto www.sereneinnovations.com to obtain a Return Merchandise Authorization Number (RMA) and shipping instructions before shipping the product to Serene Innovations. Any shipment without an RMA number, will not be accepted and will be returned to you at your expense. Any authorized returned product must be accompanied by a proof of purchase and a brief explanation of the problem.

For out-of-warranty repair and service, please contact our Customer Care Department for directions.

FCC Rules Information

Part 15 of FCC Rules Information

This device complies with Part 15 of the FCC rules. Operation is subject to the following two conditions: (1) this device may not cause harmful interference and (2) this device must accept any interference received, including interference that may cause undesired operation. This equipment has been tested and found to comply with the limits of a Class B digital device, pursuant to Part 15 of FCC rules. These limits are designed to provide reasonable protection against harmful interference in residential installation.

This equipment generates, uses and can radiate radio frequency energy if not installed and used in accordance with the instructions, may cause harmful interference to radio communications. However, there is no guarantee that interference will not occur in a particular installation. If this equipment does cause harmful interference to radio or television reception, which can be determined by turning the equipment off and on, you may try one of the following methods to correct the interference:

1. Where it can be done safely, re-orient the receiving television or radio antenna.
2. To the extent possible, relocate the television, radio or other receiver, with respect to the cordless phone.
3. Connect the cordless phone and AC adapter into a different electrical outlet.
4. Consult the dealer or an experienced radio/TV technician for help. Modification: Any modification not expressly approved by the manufacturer of this device could void the user's authority to operate the device.

This Class B digital device complies with Canadian ICES-003, RSS 210 Issue 8.



Serene Group, Inc.
14731 Carmenita Road, Norwalk, CA. 90650
Toll Free: 866-376-9271, Fax: 562-321-9590
Website: www.sereneinnovations.com
Email: Customercare@Sereneinnovations.com

Bluetooth® is a trademark of Bluetooth SIG, Inc.
Copyright © 2019 Serene Group, Inc. All rights reserved.