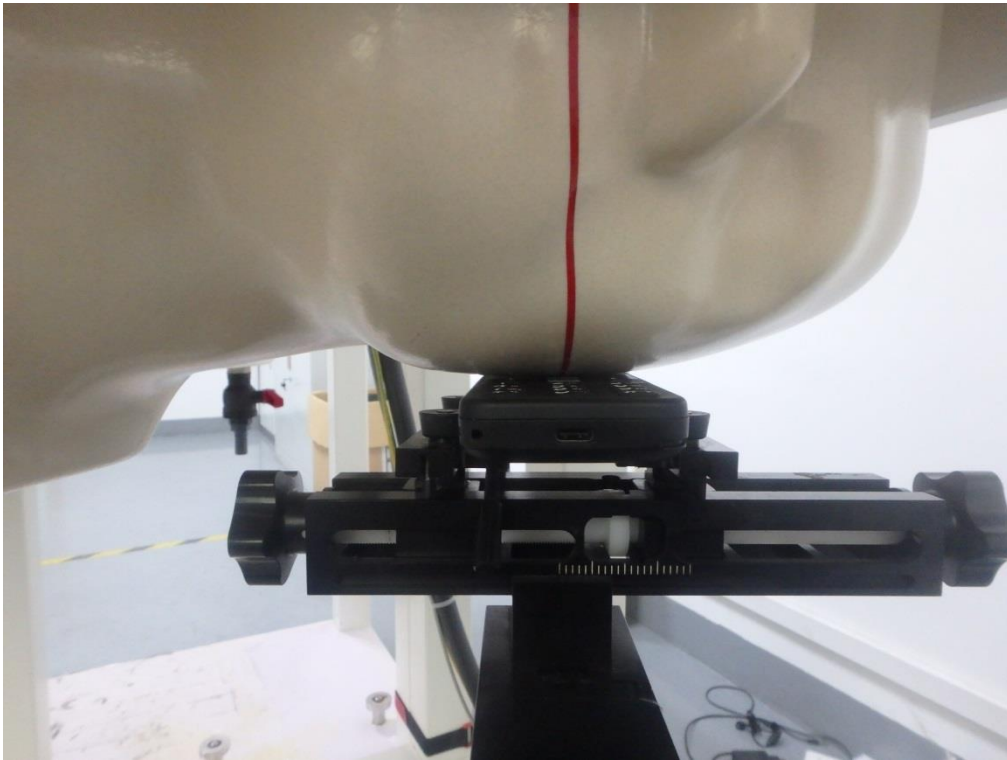
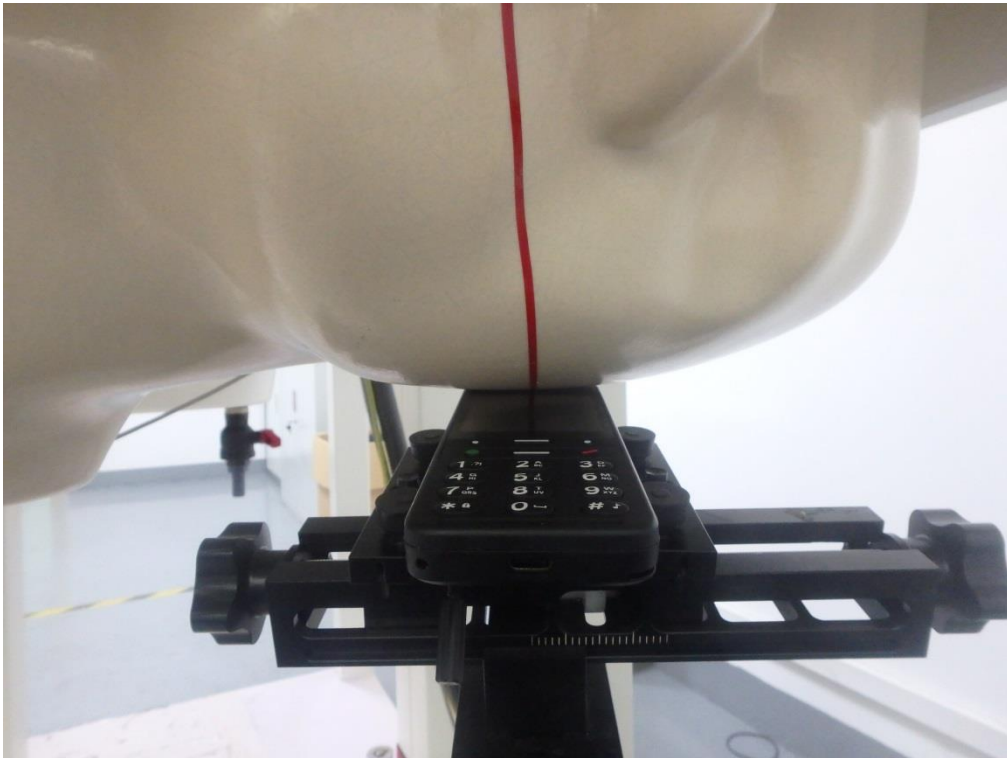


Test Setup Photos

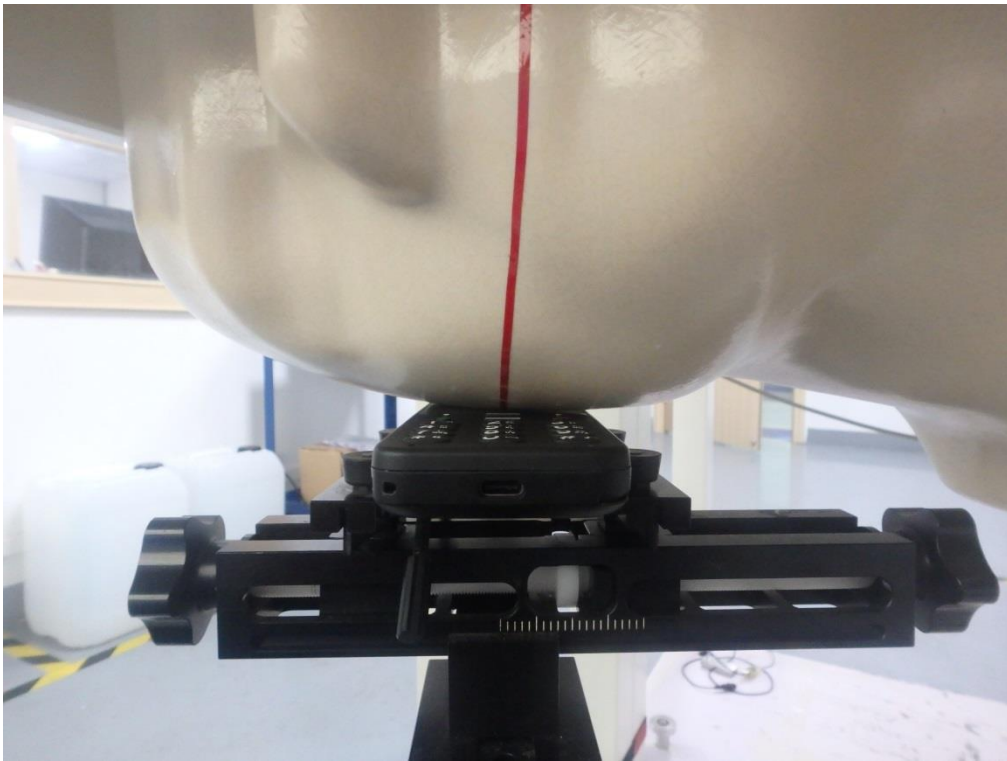
LEFT-CHEEK TOUCH



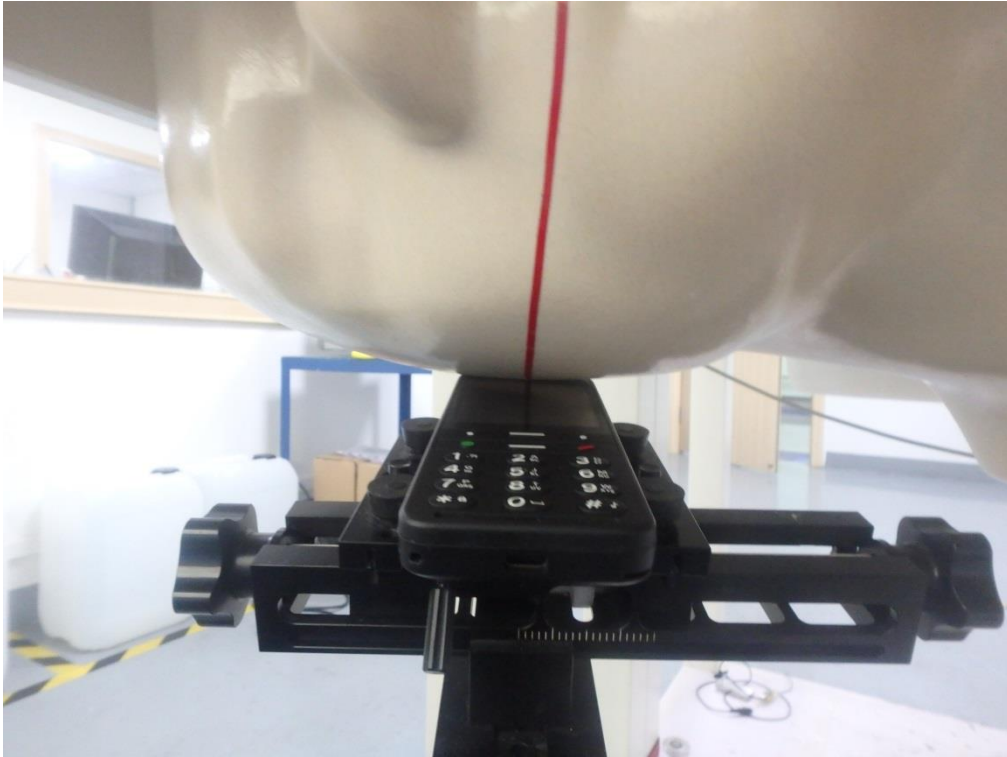
LEFT-TILT 15°



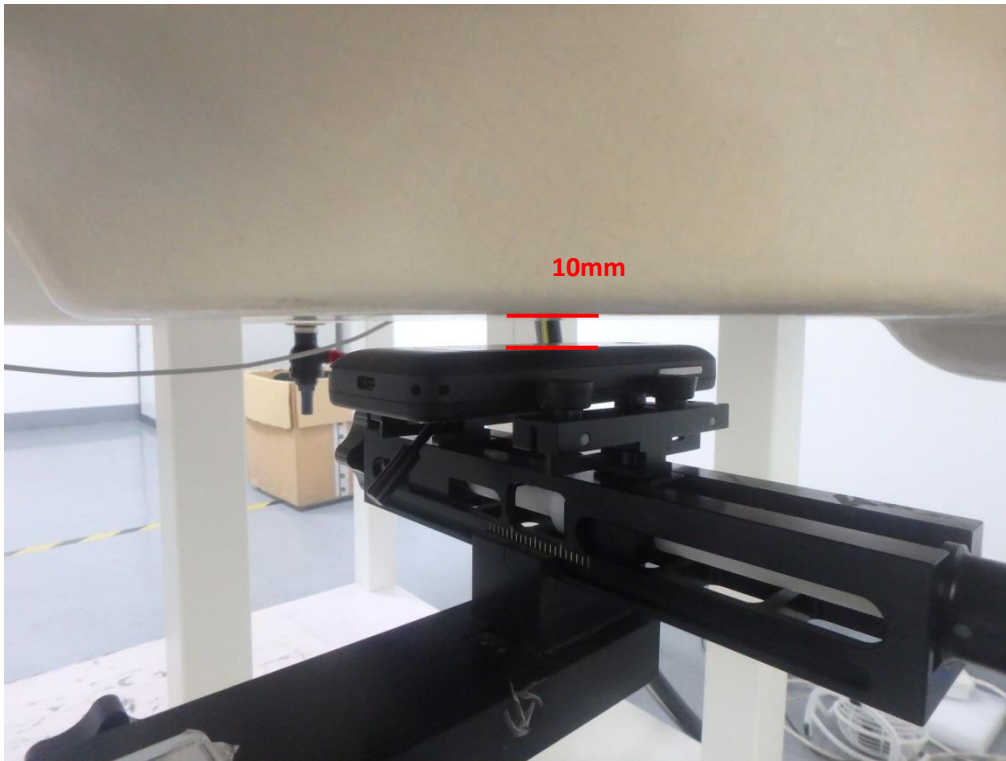
RIGHT- CHEEK TOUCH



RIGHT-TILT 15°



Body Back 10mm



Body Front 10mm



Edge 1(Top) 10mm



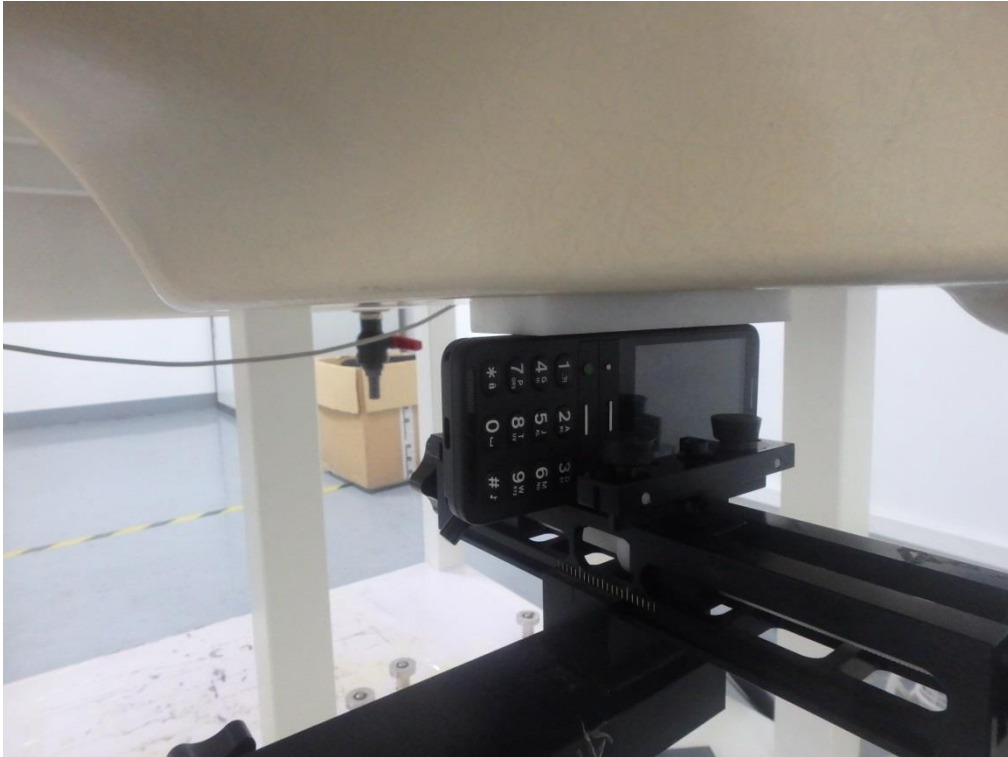
Edge 2(Right) 10mm



Edge 3(Bottom) 10mm



Edge 4(Left) 10mm

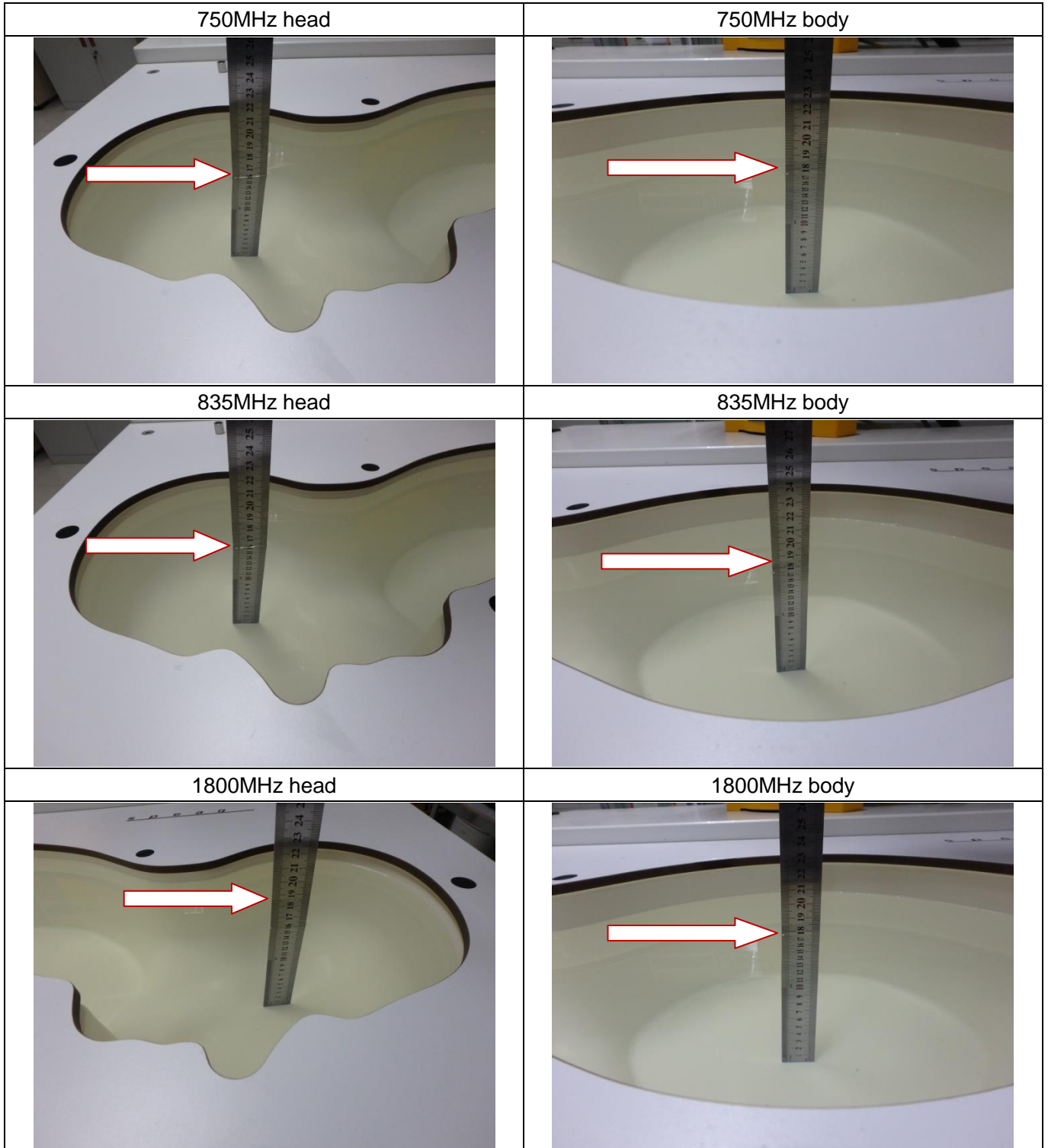


Body Back with headset 10mm

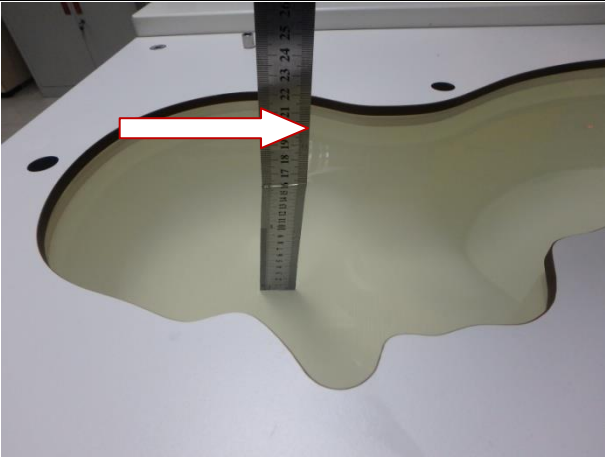


DEPTH OF THE LIQUID IN THE PHANTOM—ZOOM IN

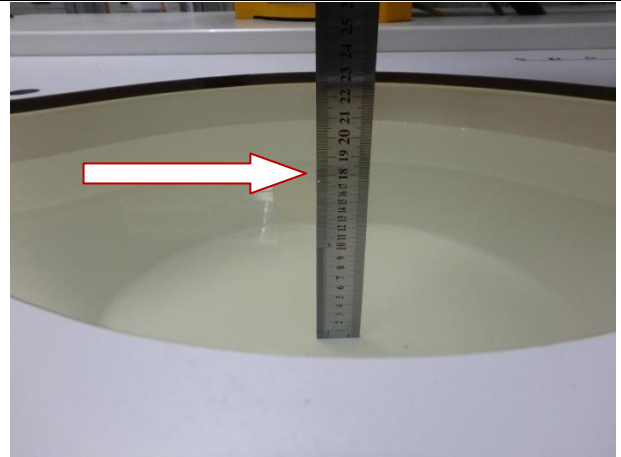
Note : The position used in the measurement were according to IEEE 1528-2013



1900MHz head



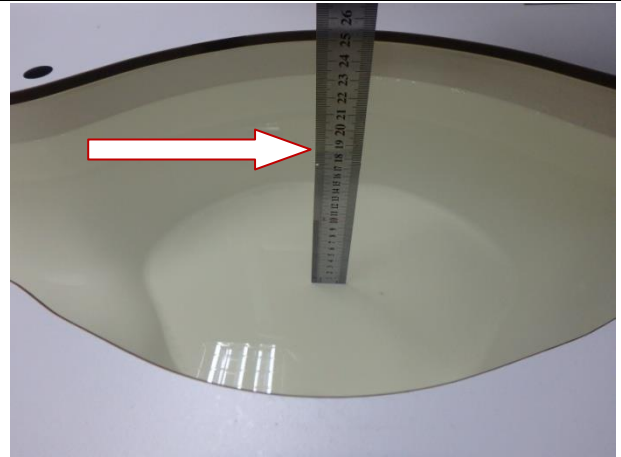
1900MHz body



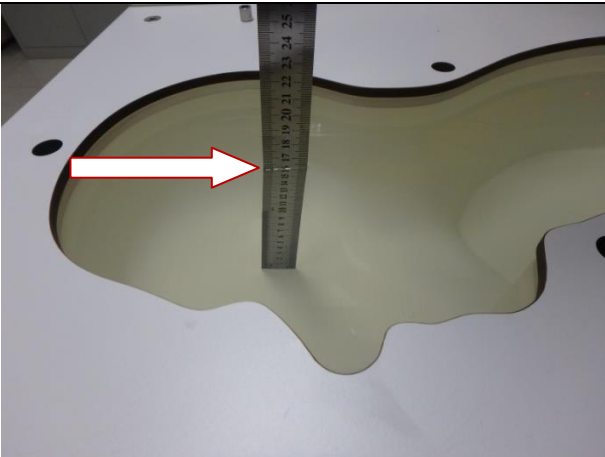
2300MHz head



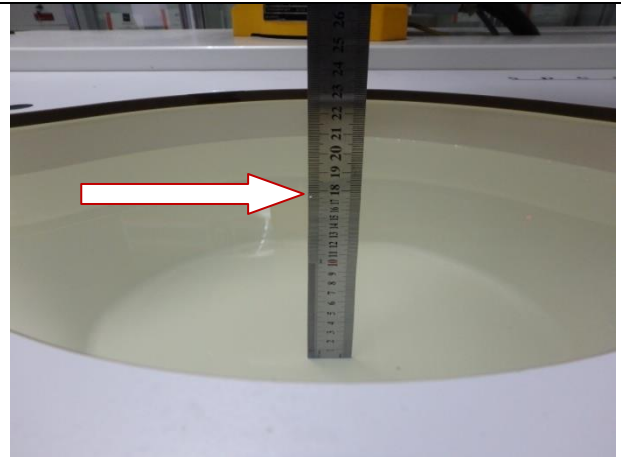
2300MHz body



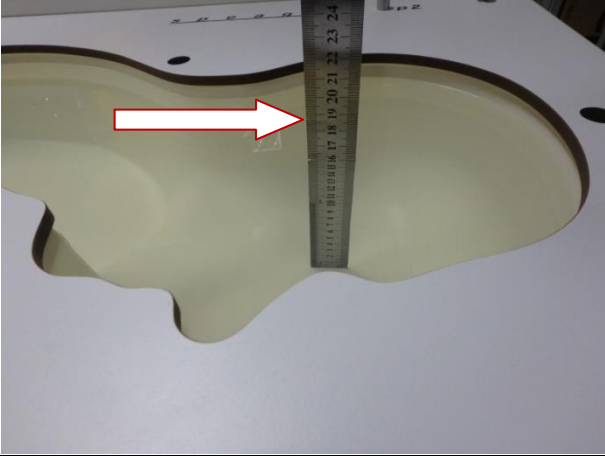
2450MHz head



2450MHz body



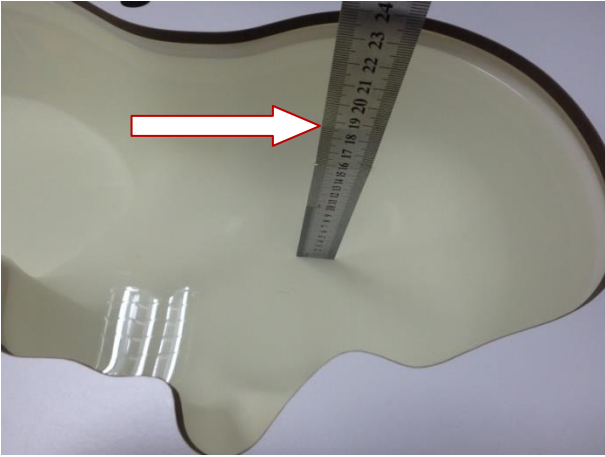
2600MHz head



2600MHz body



5000MHz head



5000MHz body

