

Frigga T7 Series User Manual

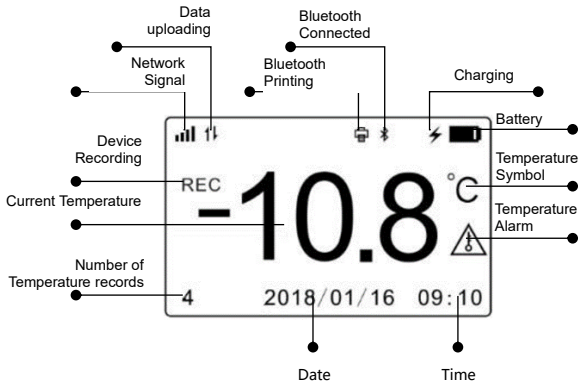


Appearance Instruction



Note: The AC code (Activation code) is in the back of device.

Display Instruction



Instructions

In order to better experience the real-time monitoring (temperature & humidity, location, track routes), real-time alarm (SMS, email) of Frigga wireless temperature recorder, it is recommended to register your business account on Frigga cloud platform official website (cloud.friggatech.com) and then add the device ID to your account before starting the device.

1. **Start:**

Long press "Start/Stop" button till "REC" has been showed on the LCD interface, device is ready to monitor. At the same time, the record quantity also will be showed on the LCD interface.

(Using default thresholds or change the thresholds via Frigga cloud platform).



2. Setting:

Thresholds can be changed via cloud platform.

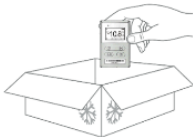
On the page "Device Setting", we can:

- Change the temperature thresholds.
- Add alarm notification personnel.
- Share equipment to someone.
- Setting position notification.
- Set up automatic flight mode.



3. Transport:

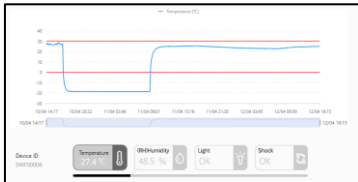
Put the device into the goods and begin to transport.



4. Monitoring:

Whether you set up the device or not, you also can monitor the temperature, humidity, location, route through Frigga cloud platform.

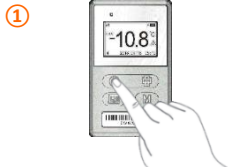
- When the temperature is over limit, the cloud platform will notify the relevant person by mail or SMS.
- Notify the presupposed person when the device reaches the designated location.
- When the device arrives near the designated airport, the device will enter the flight mode automatically.



5. Stop:

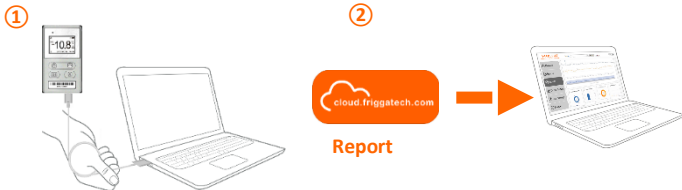
Three ways to end journey:

- ① Long press “Start/Stop” button till “REC” disappear from LCD interface, the device has been stopped.
- ② Connect with the computer through a USB cable and then export the PDF report from device.
- ③ Via cloud platform, inform the device to stop, and the device will respond within one reporting interval in a good signal environment.



6. Report:

- ① When stop record data, device will generate PDF report automatically. Via USB cable connect with PC, can access it directly.
- ② On the Frigga cloud platform, the whole transportation data will be backed up, and can be viewed through device ID.



Cautions

Please read the following notes carefully before using:

- When you find that the device don't upload the data to cloud, Please confirm that the device is working properly or whether the device is in flight mode.
- Please confirm that the device is working in the range of measurement.
- Don't use external force to impact the device.
- Don't take apart the device by yourself.
- Please keep the device away from fire.
- Don't put the device into liquid.

Salute Extraordinary

Technical Support: support@dewav.com

This device complies with Part 15 of the FCC Rules. Operation is subject to the following two conditions: (1) this device may not cause harmful interference, and (2) this device must accept any interference received, including interference that may cause undesired operation.

Changes or modifications to this unit not expressly approved by the party responsible for compliance could void the user's authority to operate the equipment.

NOTE: This equipment has been tested and found to comply with the limits for a Class B digital device, pursuant to Part 15 of the FCC Rules. These limits are designed to provide reasonable protection against harmful interference in a residential installation. This equipment generates, uses and can radiate radio frequency energy and, if not installed and used in accordance with the instructions, may cause harmful interference to radio communications. However, there is no guarantee that interference will not occur in a particular installation. If this equipment does cause harmful interference to radio or television reception, which can be determined by turning the equipment off and on, the user is encouraged to try to correct the interference by one or more of the following measures:

- Reorient or relocate the receiving antenna.
- Increase the separation between the equipment and receiver.
- Connect the equipment into an outlet on a circuit different from that to which the receiver is connected.
- Consult the dealer or an experienced radio/TV technician for help.

This device and its antenna(s) must not be co-located or operation in conjunction with any other antenna or transmitter.

Radiation Exposure Statement

To maintain compliance with FCC's RF Exposure guidelines, This equipment should be installed and operated with minimum distance of 20cm from your body.