

Tire Pressure Monitoring System

User's Manual



Note

Do not watch the device when driving

This product is for passenger cars only

Ensure to read through the user manual completely and fully understand the contents before use.

It is recommended that a tyre professional install this product.

This product is an effective tool to continuously monitor the tyre inflation point; this unit may not be effective during sudden deceleration

or accidents.

Do not use in conjunction with tyre foam - lling products.

The monitor does not require constant observation. When there is abnormal tyre pressure or temperature, the display will automatically alarm with both a visual and audio cue.

Ensure that the in car display does not distract while driving

This manual covers internal and external sensors.

* Don't beat the sensor.

* The system can send light and voice alarm when tire pressure and temperature not normal.

TPMS Work Introduce

The system consists of four sensors and a receiver , sensor directly replace the original car valve installation. Sensor timing measurement tire pressure and temperature information, the receiver timing transmitting a tire in the latest information to the owners of the phone, in the driving process and the proper pressure, time interval transmission signal sensor is larger than the headway time process and abnormal pressure, when the sensor detects a tire in a certain period of time, immediately sent the latest information to the receiver, the receiver receives the leakage information, immediately notify the owners of gas leakage alarm phone.

TPMS receiver introduce

- 1、 The receiver get the sensor signal and send to phone;
- 2、 Voltage is 5V or cigarette lighter provide power;
- 3、 The receiver communication as the Bluetooth as the main agreement, the name of Bluetooth receive is "TPMS".
- 4、 TPMS base function, as the data show, low pressure, high pressure, high temperature alarm.ID setting, and some valve setting, need the phone done.
- 5、 The green led will be light when the Bluetooth is connected.

Sensor ID setting

- 1.Before shipping, sensor ID and position have set in receiver, you can install as the sensor position, no need setting;
- 2.When sensor need replacement, need use master operate position tire ID study or ID learning manual, then receiver get into ID learning status. then let

the change sensor put into leak or Aerated status(or use the tools wakeup sensor)this time receiver can use the new sensor ID, and inform the master, master receive the confirm message and inform change ID success.

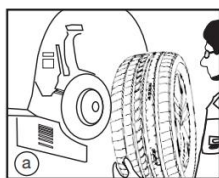
3.In the sensor when pairing, please make sure that only one sensor in pairing mode.

4.A pairing is not successful, can be repeated for installing sensor tire inflation or deflation.

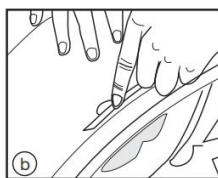
5.The sensor in the paired, please were paired according to the left front, right front, left rear, right after the order, to avoid wrong learning position sensor.

6. When the mobile terminal in learning to wait for mode, please will install the corresponding tire sensor, inflated and deflated, at this point, the learning success.

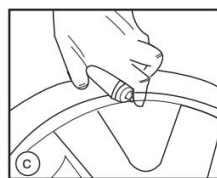
Sensor install



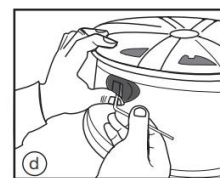
Uninstall wheel from vehicle and remove tyre from wheel.



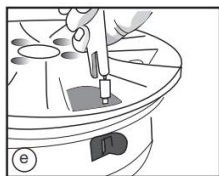
Remove existing air valve from wheel barrel.



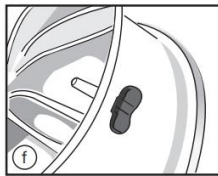
Kindly ensure valve hole on wheel is clean thoroughly.



Install & adjust TPMS sensor unit (adjustable) onto wheel to sit flush onto the wheel barrel.



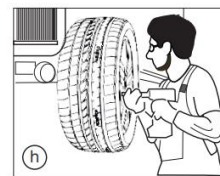
Install the front side TPMS valve by screwing and tighten the valve socket on the face of wheel.



TPMS device installation completed , continue by fitting the tyre back onto the wheel.



Kindly rebalance the wheel and tyre to ensure radial uniformity.



Reinstall the balanced wheel onto vehicle to resume sensor set up.

- a. Remove the tyre from the wheel.
- b. Remove the old valve from the wheel.
- c. Ensure the valve hole area is clean.
- d. Install the internal sensor
- e. Lock the screw of the sensor on the outside of the wheel.
- f. Product should be as fitted shown.
- g. Replace tyre, check for leakage and balance the wheel.
- h. Reinstall on car.

TPMS Modules Technical Parameters

Sensor Technical Parameters

Working voltage: 2.1V-3.6V

Working frequency: 433.92MHz only transmit and 125kHz only

Receive

Pressure measurement range:0-116Psi

Temperature measurement range:-40°C/105°C

Working temperature:-40°C/105°C

433.92MHz:-10.3dBm(ERP)

TPMS Bluetooth Adaptor

Operating frequency: 433.92MHz \pm 38KHz

Bluetooth sent distance : 8M

Bluetooth version: 4.0

Operating voltage: 4 \pm 0.5V

Working current: \leq 30mA

Quiescent current: \leq 10mA

Operating temperature: -40 ° C to + 85 ° C

Charging voltage: 4.5V-5V

Power supply: Car cigarette lighter power supply or car USB power supply

10. Guarantee

One year of the guarantee period is provided with the conditions as following:

a. In addition to the claims under the law and/or contract of sale which arise from material defects, the rights arising from this guarantee are granted by the seller to the customer.

b. The product is guaranteed to be free of any defects.

Parts that are subject to wear and tear such as batteries, or battery cells are not included in this guarantee.

The guarantee is excluded if

The product has been misused or treated carelessly,

The product has been damaged due to excessive stress, instructions,

The defect has been caused by failure to observe the operating instructions,

A repair or a repair attempt has been carried out by personnel other than that of an authorized point of service.

c. The guarantee period shall commence at the time of delivery of the product from the seller to the purchaser.

d. The place of purchase and the date of delivery shall be proven by

submitting proof of purchase, for example, the sales receipt, invoice, delivery note or similar document.

e. Any defects that occur during the guarantee period should be submitted to the authorized point of service within 2 weeks since they happened. The defect will be remedied by delivery a product identical in construction. Further claims of the customer arising from this guarantee, particularly claims for reimbursement of expenses, reduction, compensation of damages or the right of withdrawal, shall be excluded.

f. The guarantee period shall not be extended if services are performed under the terms of the guarantee.

g. The parts replaced when carrying out the repairs under warranty or the product retained in case of replacement delivery shall no longer be the property of the customers or dealers

h. If our customer services are called upon without due cause, the costs incurred will be charged to the customer.

i. In case any defects occur, please contact your dealer or the

service center in your country.

FCC Requirement

changes or modifications not expressly approved by the party responsible for compliance could void the user's authority to operate the equipment.

This device complies with Part 15 of the FCC Rules. Operation is subject to the following two conditions:

- (1) this device may not cause harmful interference, and
- (2) this device must accept any interference received, including interference that may cause undesired operation.

Note: This equipment has been tested and found to comply with the limits for a Class B digital device, pursuant to Part 15 of the FCC Rules. These limits are designed to provide reasonable protection against harmful interference in a residential installation. This equipment generates, uses, and can radiate radio frequency energy, and if not installed and used in accordance with the instructions, may cause harmful interference to radio communications. However, there is no guarantee that interference will not occur in a particular installation. If this equipment does cause harmful interference to radio or television reception, which can be determined by turning the equipment off and on, the user is encouraged to try to correct the interference by one or more

of the following measures:

- Reorient or relocate the receiving antenna.
- Increase the separation between the equipment and receiver.
- Connect the equipment into an outlet on a circuit different from that to which the receiver is connected. –Consult the dealer or an experienced radio/TV technician for help. This equipment complies with FCC radiation exposure limits set forth for an uncontrolled environment. This equipment should be installed and operated with a minimum distance of 20cm between the radiator & your body. This transmitter must not be co-located or operating in conjunction with any other antenna or transmitter.

Manufacturer information:

Zhejiang PDW Industrial Co., Ltd.

Quanxi Industrial Park, Wuyi County, Jinhua City, Zhejiang, P.R.

China 321200

Importer information:

City Pro car d.o.o.

Surcinska 5b, Belgrade, Serbia