



Shenzhen Huaxia Testing Technology Co., Ltd

1F., Block A of Tongsheng Technology Building, Huahui Road, Dalang Street, Longhua District, Shenzhen, China

Telephone: +86-755-26648640
Fax: +86-755-26648637
Website: www.cqa-cert.com

Report Template Version: V03
Report Template Revision Date: Mar.1st, 2017

Test Report

Report No.: CQASZ20191101176E
Applicant: Zhejiang PDW Industrial Co., Ltd
Address of Applicant: Quanxi Industrial Park, Wuyi County, Jinhua City, Zhejiang, P.R. China 321200

Equipment Under Test (EUT):

Product: TPMS Launcher
All Model No.: ~~04.01.63, 04.01.74~~
Test Model No.: 04.01.63
Brand Name: PDW, PROCAST
FCC ID: 2ATWD-040163
Standards: 47 CFR Part 15, Subpart C
Date of Receipt: 2019-11-20
Date of Test: 2019-11-20 to 2019-11-26
Date of Issue: 2019-11-26
Test Result : **PASS***

Tested By:

Tiny You

(Tiny You)

Reviewed By:

Aaron Ma

(Aaron Ma)

Approved By:

Jack Ai
(Jack Ai)



* In the configuration tested, the EUT complied with the standards specified above.

The test report is effective only with both signature and specialized stamp, The result(s) shown in this report refer only to the sample(s) tested. Without written approval of CQA, this report can't be reproduced except in full.

1 Version

Revision History Of Report

Report No.	Version	Description	Issue Date
CQASZ20191101176E	Rev.01	Initial report	2019-11-26

2 Test Summary

Test Item	Test Requirement	Test method	Result
Antenna Requirement	47 CFR Part 15, Subpart C Section 15.203	ANSI C63.10 2013	PASS
AC Power Line Conducted Emission	47 CFR Part 15, Subpart C Section 15.207	ANSI C63.10 2013	N/A
20dB Occupied Bandwidth	47 CFR Part 15, Subpart C Section 15.215	ANSI C63.10 2013	PASS
Radiated Emission , Radiated Spurious Emissions	47 CFR Part 15, Subpart C Section 15.209	ANSI C63.10 2013	PASS

Remark:

N/A: Because the EUT powered by DC , So Not Applicable

Remark: The highest frequency of the internal sources of the EUT is below 108 MHz.

3 Contents

	Page
1 VERSION.....	2
2 TEST SUMMARY.....	3
3 CONTENTS.....	4
4 GENERAL INFORMATION.....	5
4.1 CLIENT INFORMATION.....	5
4.2 GENERAL DESCRIPTION OF EUT.....	5
4.3 TEST ENVIRONMENT.....	6
4.4 DESCRIPTION OF SUPPORT UNITS.....	6
4.5 STATEMENT OF THE MEASUREMENT UNCERTAINTY.....	7
4.6 TEST LOCATION.....	7
4.7 TEST FACILITY.....	7
4.8 DEVIATION FROM STANDARDS.....	7
4.9 OTHER INFORMATION REQUESTED BY THE CUSTOMER.....	7
4.10 EQUIPMENT LIST.....	8
5 TEST RESULTS AND MEASUREMENT DATA.....	9
5.1 ANTENNA REQUIREMENT.....	9
5.2 20dB OCCUPY BANDWIDTH.....	10
5.3 RADIATED SPURIOUS EMISSION & RESTRICTED BANDS.....	12
5.3.1 <i>Spurious Emissions</i>	12
6 PHOTOGRAPHS - EUT TEST SETUP.....	17
6.1 RADIATED EMISSION.....	17
7 PHOTOGRAPHS - EUT CONSTRUCTIONAL DETAILS.....	18

4 General Information

4.1 Client Information

Applicant:	Zhejiang PDW Industrial Co., Ltd
Address of Applicant:	Quanxi Industrial Park, Wuyi County, Jinhua City, Zhejiang, P.R. China 321200
Manufacturer:	Zhejiang PDW Industrial Co., Ltd
Address of Manufacturer:	Quanxi Industrial Park, Wuyi County, Jinhua City, Zhejiang, P.R. China 321200

4.2 General Description of EUT

Product:	TPMS Launcher
All Model No.:	04.01.63, 04.01.74
Test Model No.:	04.01.63
Brand Name:	PDW, PROCAST
Hardware Version:	V7.2
Software Version:	V01
Sample Type:	Portable production
Equipment Category	Non-ISM frequency
Operation Frequency range	125KHz
Modulation Type:	Induction
Antenna Type:	Magnet Antenna
Antenna Gain:	0dBi
EUT Power Supply:	2 X AAA battery:DC3V

Note:

In section 15.31(m), regards to the operating frequency range less 1 MHz.

All model: 04.01.63, 04.01.74

Only the model 04.01.63 was tested, since the electrical circuit design, layout, components used and internal wiring were identical for the above models, with difference being Trademarks and models are named.

4.3 Test Environment

Operating Environment:	
Radiated Emission	
Temperature:	25.4 °C
Humidity:	46 % RH
Atmospheric Pressure:	1005 mbar
Radio conducted item test (RF Conducted test room):	
Temperature:	26 °C
Humidity:	43 % RH
Atmospheric Pressure:	1005 mbar
Test Mode:	
Tx mode	125KHz Transmitter
Note: The TX mode was the worst case and only the data of the worst case record in this report.	

4.4 Description of Support Units

The EUT has been tested with associated equipment below.

1) support equipment

Description	Manufacturer	Model No.	Certification	Supplied by
Adapter	Auzone	TDHU10E-050150	DOC	Client

2) cable

Cable No.	Description	Manufacturer	Cable Type/Length	Supplied by
1	USB cable	-	Unshielded (1.15 m)	Client

4.5 Statement of the measurement uncertainty

The data and results referenced in this document are true and accurate.

The reader is cautioned that there may be errors within the calibration limits of the equipment and facilities.

The measurement uncertainty was calculated for all measurements listed in this test report acc. to CISPR 16 - 4 „Specification for radio disturbance and immunity measuring apparatus and methods – Part 4: Uncertainty in EMC Measurements“ and is documented in the **Shenzhen Huaxia Testing Technology Co., Ltd.** quality system acc. to DIN EN ISO/IEC 17025.

Furthermore, component and process variability of devices similar to that tested may result in additional deviation. The manufacturer has the sole responsibility of continued compliance of the device.

Hereafter the best measurement capability for CQA laboratory is reported:

No.	Item	Uncertainty	Notes
1	Radiated Emission (Below 1GHz)	5.12dB	(1)
2	Radiated Emission (Above 1GHz)	4.60dB	(1)
3	Occupied Bandwidth	1.1%	(1)
4	Temperature test	0.8°C	(1)
5	Humidity test	2.0%	(1)

(1) This uncertainty represents an expanded uncertainty expressed at approximately the 95% confidence level using a coverage factor of $k=2$.

4.6 Test Location

Shenzhen Huaxia Testing Technology Co., Ltd,

1F., Block A of Tongsheng Technology Building, Huahui Road, Dalang Street, Longhua District, Shenzhen, China

4.7 Test Facility

• **A2LA (Certificate No. 4742.01)**

Shenzhen Huaxia Testing Technology Co., Ltd., Shenzhen EMC Laboratory is accredited by the American Association for Laboratory Accreditation(A2LA). Certificate No. 4742.01.

• **FCC Registration No.: 522263**

Shenzhen Huaxia Testing Technology Co., Ltd., Shenzhen EMC Laboratory has been registered and fully described in a report filed with the (FCC) Federal Communications Commission. The acceptance letter from the FCC is maintained in our files. Registration No.:522263

4.8 Deviation from Standards

None.

4.9 Other Information Requested by the Customer

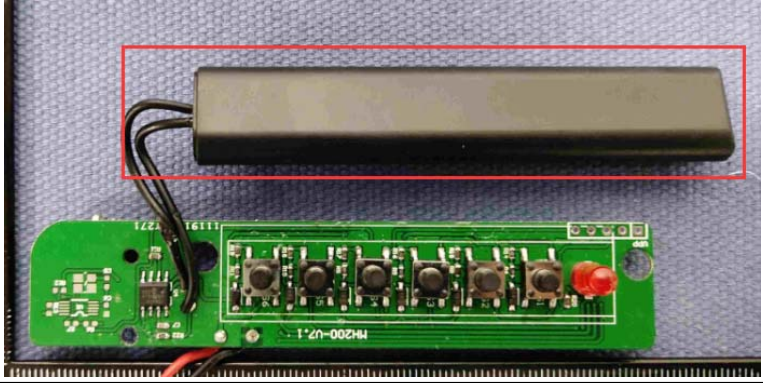
None.

4.10 Equipment List

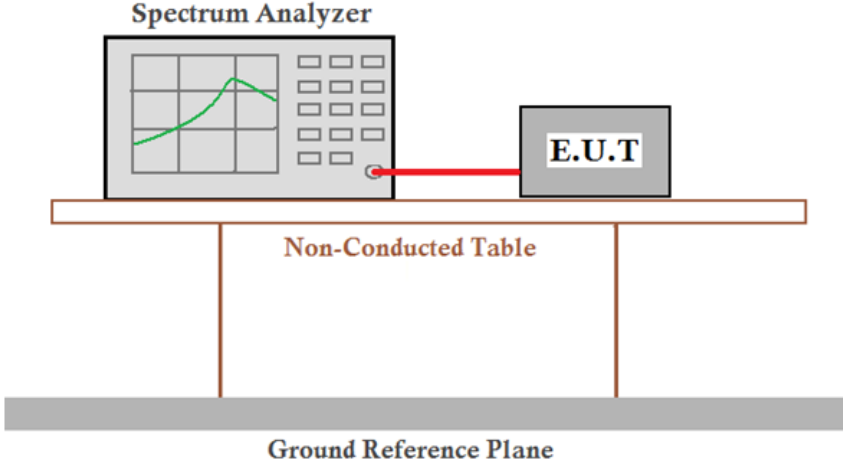
Test Equipment	Manufacturer	Model No.	Instrument No.	Calibration Date	Calibration Due Date
EMI Test Receiver	R&S	ESR7	CQA-005	2019/10/25	2020/10/24
Loop antenna	Schwarzbeck	FMZB1516	CQA-060	2019/10/21	2020/10/20
Bilog Antenna	R&S	HL562	CQA-011	2019/9/26	2020/9/25
Coaxial Cable (Above 1GHz)	CQA	N/A	C007	2019/9/26	2020/9/25
Coaxial Cable (Below 1GHz)	CQA	N/A	C013	2019/9/26	2020/9/25
Spectrum analyzer	R&S	FSU26	CQA-038	2019/10/25	2020/10/24

5 Test results and Measurement Data

5.1 Antenna Requirement

Standard requirement:	47 CFR Part 15C Section 15.203
<p>15.203 requirement: An intentional radiator shall be designed to ensure that no antenna other than that furnished by the responsible party shall be used with the device. The use of a permanently attached antenna or of an antenna that uses a unique coupling to the intentional radiator, the manufacturer may design the unit so that a broken antenna can be replaced by the user, but the use of a standard antenna jack or electrical connector is prohibited.</p> <p>15.247(b) (4) requirement: The conducted output power limit specified in paragraph (b) of this section is based on the use of antennas with directional gains that do not exceed 6 dBi. Except as shown in paragraph (c) of this section, if transmitting antennas of directional gain greater than 6 dBi are used, the conducted output power from the intentional radiator shall be reduced below the stated values in paragraphs (b)(1), (b)(2), and (b)(3) of this section, as appropriate, by the amount in dB that the directional gain of the antenna exceeds 6 dBi.</p>	
EUT Antenna:	
<p>The antenna is magnet antenna. The best case gain of the antenna is 0dBi.</p>	

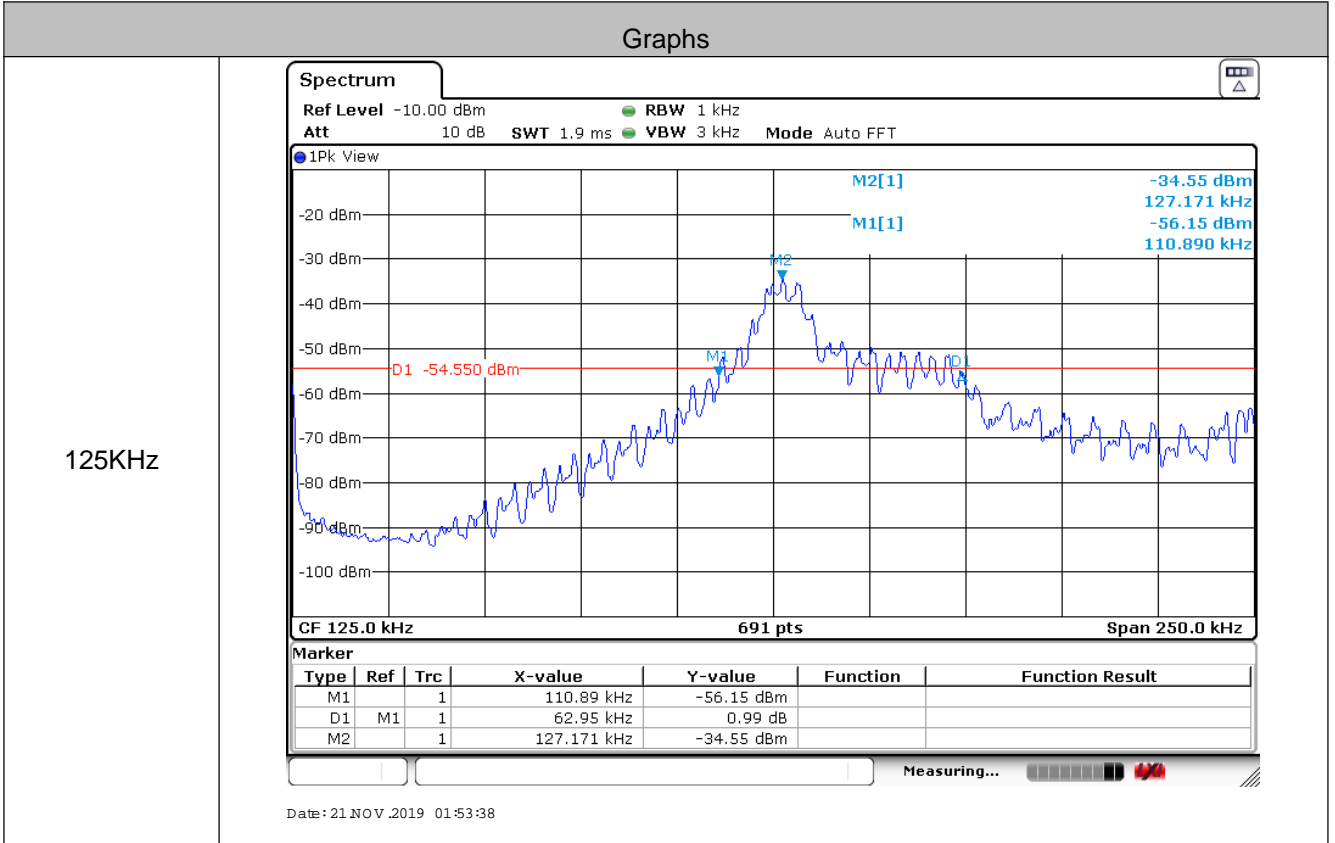
5.2 20dB Occupy Bandwidth

Test Requirement:	47 CFR Part 15C Section 15.215
Test Method:	ANSI C63.10 2013
Test Setup:	 <p style="text-align: center;"><i>Remark: Offset=Cable loss+ attenuation factor.</i></p>
Test Results:	Pass

Measurement Data

Tx mode		
Test Frequency (KHz)	20dB Occupy Bandwidth (kHz)	Result
125	62.95	Pass

Test plot as follows:



5.3 Radiated Spurious Emission & Restricted bands

5.3.1 Spurious Emissions

Test Requirement:	47 CFR Part 15C Section 15.209 and 15.205				
Test Method:	ANSI C63.10 2013				
Test Site:	Measurement Distance: 3m (Semi-Anechoic Chamber)				
Receiver Setup:	Frequency	Detector	RBW	VBW	Remark
	0.009MHz-0.090MHz	Peak	10kHz	30kHz	Peak
	0.009MHz-0.090MHz	Average	10kHz	30kHz	Average
	0.090MHz-0.110MHz	Quasi-peak	10kHz	30kHz	Quasi-peak
	0.110MHz-0.490MHz	Peak	10kHz	30kHz	Peak
	0.110MHz-0.490MHz	Average	10kHz	30kHz	Average
	0.490MHz -30MHz	Quasi-peak	10kHz	30kHz	Quasi-peak
	30MHz-1GHz	Quasi-peak	100 kHz	300kHz	Quasi-peak
	Above 1GHz	Peak	1MHz	3MHz	Peak
Peak		1MHz	10Hz	Average	
Limit:	Frequency	Field strength (microvolt/meter)	Limit (dBuV/m)	Remark	Measurement distance (m)
	0.009MHz-0.490MHz	2400/F(kHz)	-	-	300
	0.490MHz-1.705MHz	24000/F(kHz)	-	-	30
	1.705MHz-30MHz	30	-	-	30
	30MHz-88MHz	100	40.0	Quasi-peak	3
	88MHz-216MHz	150	43.5	Quasi-peak	3
	216MHz-960MHz	200	46.0	Quasi-peak	3
	960MHz-1GHz	500	54.0	Quasi-peak	3
	Above 1GHz	500	54.0	Average	3
<p>Note: 15.35(b), Unless otherwise specified, the limit on peak radio frequency emissions is 20dB above the maximum permitted average emission limit applicable to the equipment under test. This peak limit applies to the total peak emission level radiated by the device.</p>					

Test Setup:

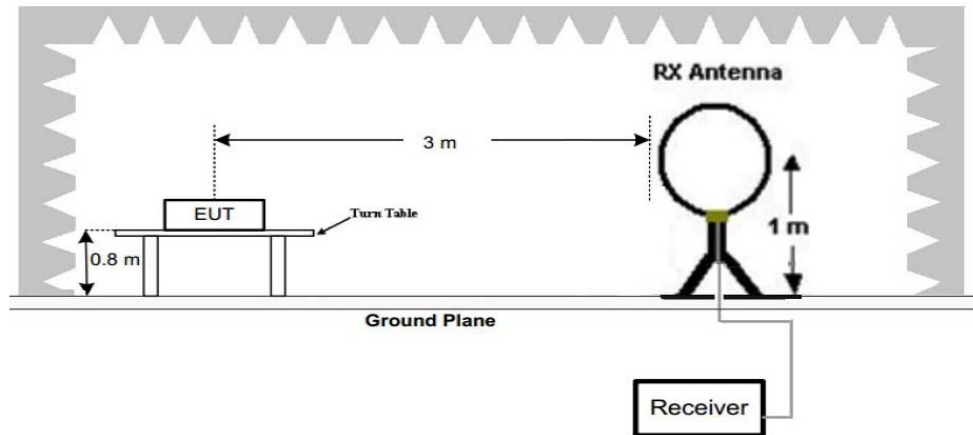


Figure 1. Below 30MHz

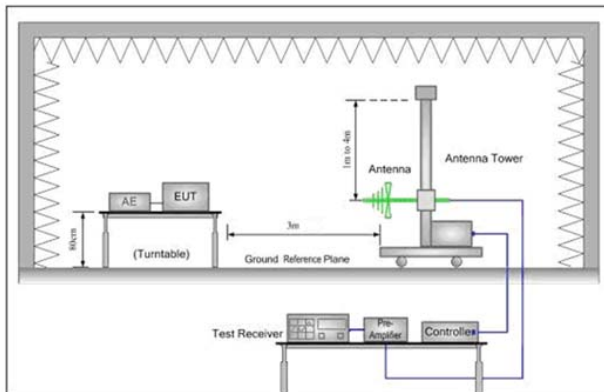


Figure 2. 30MHz to 1GHz

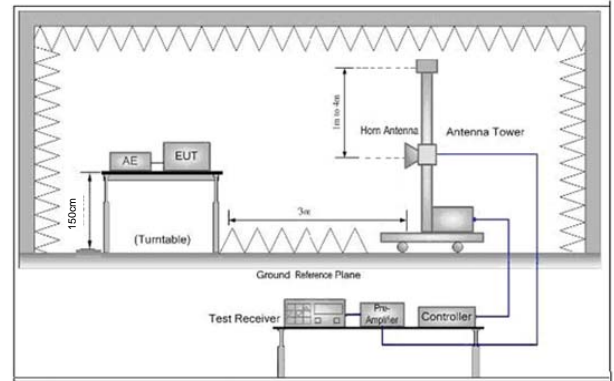


Figure 3. Above 1 GHz

Test Procedure:

- a. 1) Below 1G: The EUT was placed on the top of a rotating table 0.8 meters above the ground at a 3 meter semi-anechoic chamber. The table was rotated 360 degrees to determine the position of the highest radiation.
 2) Above 1G: The EUT was placed on the top of a rotating table 1.5 meters above the ground at a 3 meter semi-anechoic chamber. The table was rotated 360 degrees to determine the position of the highest radiation.
 Note: For the radiated emission test above 1GHz:
 Place the measurement antenna away from each area of the EUT determined to be a source of emissions at the specified measurement distance, while keeping the measurement antenna aimed at the source of emissions at each frequency of significant emissions, with polarization oriented for maximum response. The measurement antenna may have to be higher or lower than the EUT, depending on the radiation pattern of the emission and staying aimed at the emission source for receiving the maximum signal. The final measurement antenna elevation shall be that which maximizes the emissions. The measurement antenna elevation for maximum emissions shall be restricted to a range of heights of from 1 m to 4 m above the ground or reference ground plane.
- b. The EUT was set 3 meters away from the interference-receiving antenna, which was mounted on the top of a variable-height antenna tower.
- c. The antenna height is varied from one meter to four meters above the ground to determine the maximum value of the field strength. Both horizontal and vertical polarizations of the antenna are set to make the

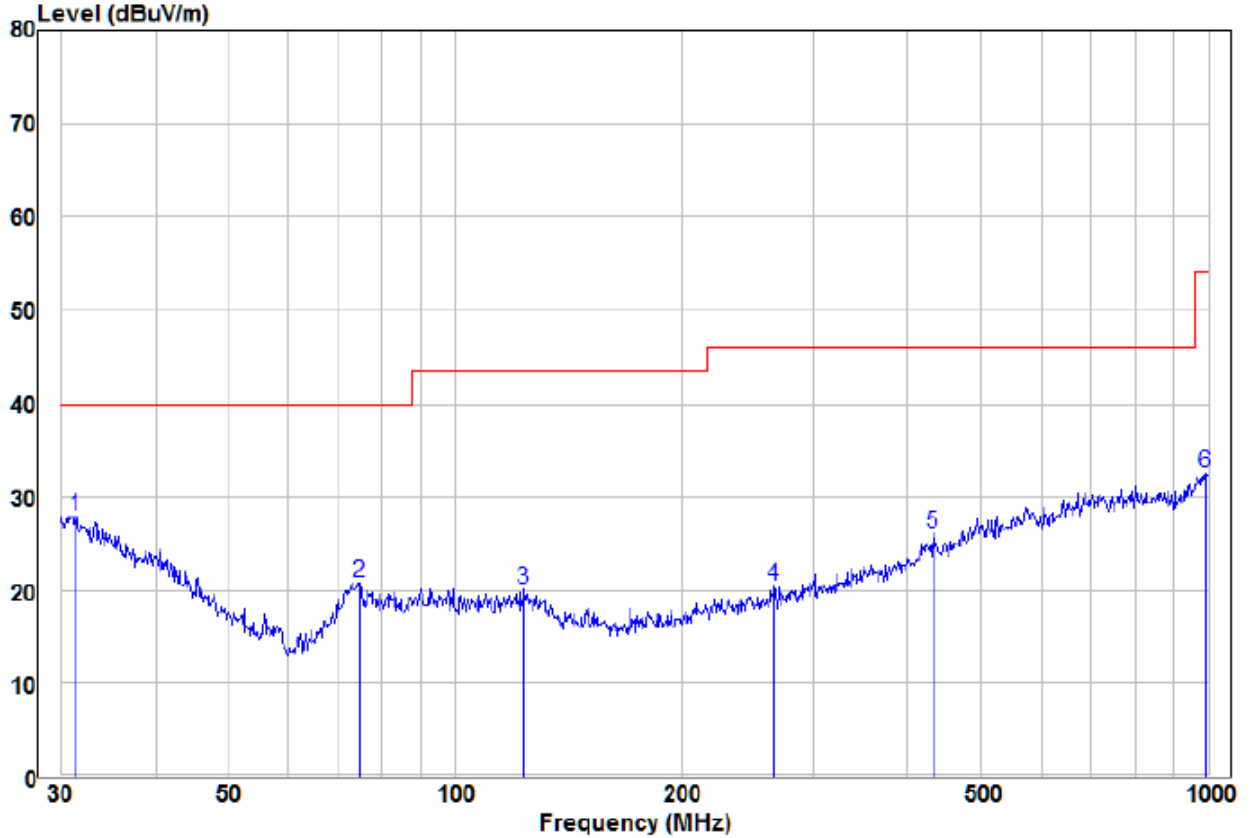
	<p>measurement.</p> <p>d. For each suspected emission, the EUT was arranged to its worst case and then the antenna was tuned to heights from 1 meter to 4 meters (for the test frequency of below 30MHz, the antenna was tuned to heights 1 meter) and the rotatable table was turned from 0 degrees to 360 degrees to find the maximum reading.</p> <p>e. The test-receiver system was set to Peak Detect Function and Specified Bandwidth with Maximum Hold Mode.</p> <p>f. If the emission level of the EUT in peak mode was 10dB lower than the limit specified, then testing could be stopped and the peak values of the EUT would be reported. Otherwise the emissions that did not have 10dB margin would be re-tested one by one using peak, quasi-peak or average method as specified and then reported in a data sheet.</p> <p>g. Repeat above procedures until all frequencies measured was complete.</p>
Test Results:	Pass

Radiated Emission below 9K~30MHz	
the worst case	
Test mode:	Tx mode

Frequency MHz	Polarization	Reading dB(uV)	Factor dB (1/m)	Level dB(uV/m) Peak	Limit dB(uV/m) Average	Margin dB	Pass/Fail
0.125	Face	56.34	19.57	75.91	106.77	30.86	Pass
0.125	Side	56.07	19.57	75.64	106.77	31.13	Pass

Note: No other emissions found between lowest internal used/generated frequencies to 30MHz. The peak level of the emission is less than the average limit, so the average level shall be less than the limit without test.

Radiated Emission		
30MHz~1GHz, the worst case		
Test mode:	Tx mode	Vertical



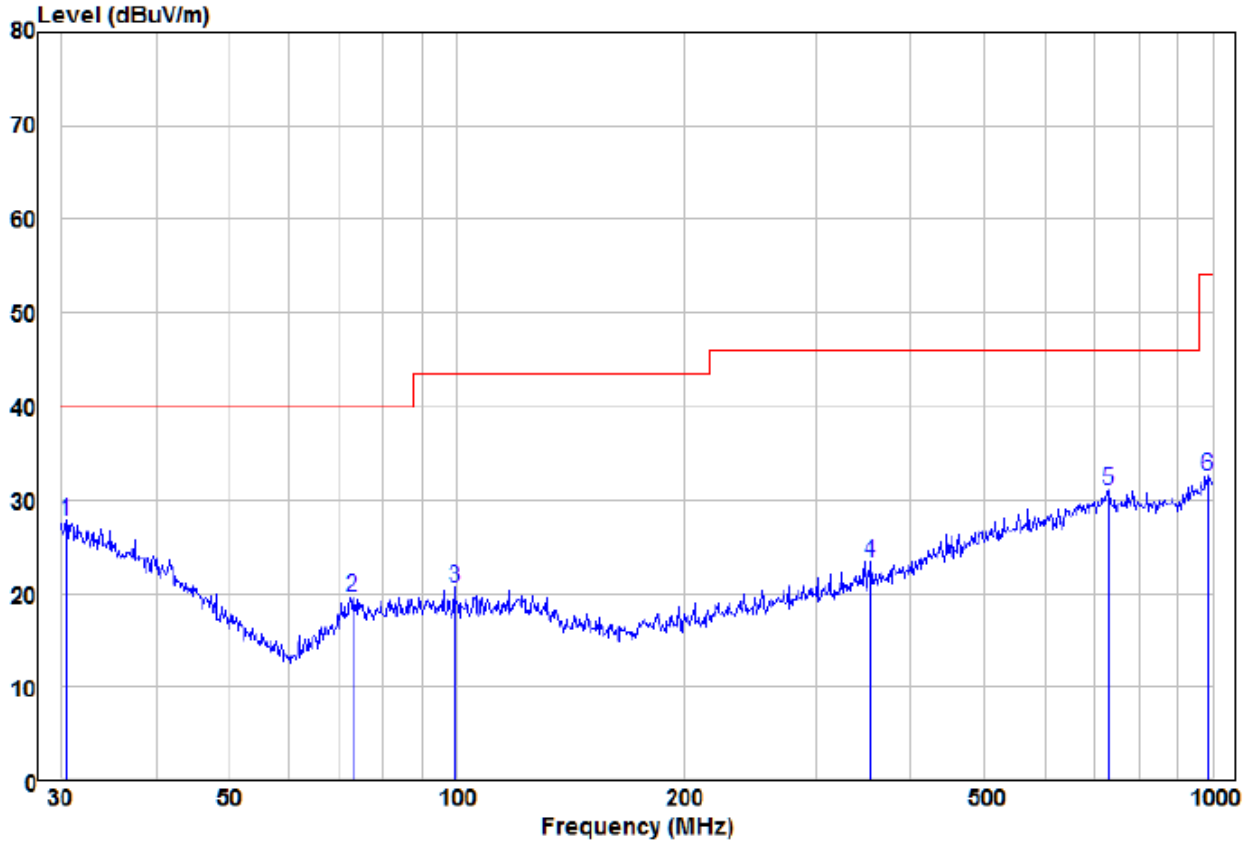
	Read	Limit	Over			
Freq	Level	Factor	Level	Line	Limit	Remark
MHz	dBuV	dB/m	dBuV/m	dBuV/m	dB	Pol/Phase
1 pp	31.40	10.14	17.91	28.05	40.00	-11.95 Peak
2	74.92	11.93	8.96	20.89	40.00	-19.11 Peak
3	123.70	9.63	10.56	20.19	43.50	-23.31 Peak
4	265.68	9.92	10.60	20.52	46.00	-25.48 Peak
5	431.03	11.03	15.13	26.16	46.00	-19.84 Peak
6	993.01	9.68	22.94	32.62	54.00	-21.38 Peak

Remark:

The field strength is calculated by adding the Antenna Factor, Cable Factor & Preamplifier. The basic equation with a sample calculation is as follows:

$$\text{Final Test Level} = \text{Receiver Reading} + \text{Antenna Factor} + \text{Cable Factor}$$

30MHz~1GHz, the worst case		
Test mode:	Tx mode	Horizontal



	Read		Limit	Over			
Freq	Level	Factor	Level	Line	Limit	Remark	Pol/Phase
MHz	dBuV	dB/m	dBuV/m	dBuV/m	dB		
1 pp	30.53	9.51	18.22	27.73	40.00	-12.27 Peak	HORIZONTAL
2	73.10	10.91	8.66	19.57	40.00	-20.43 Peak	HORIZONTAL
3	99.53	9.95	10.62	20.57	43.50	-22.93 Peak	HORIZONTAL
4	354.18	10.38	13.05	23.43	46.00	-22.57 Peak	HORIZONTAL
5	729.36	10.84	20.29	31.13	46.00	-14.87 Peak	HORIZONTAL
6	986.07	9.92	22.75	32.67	54.00	-21.33 Peak	HORIZONTAL

Remark:

The field strength is calculated by adding the Antenna Factor, Cable Factor & Preamplifier. The basic equation with a sample calculation is as follows:

$$\text{Final Test Level} = \text{Receiver Reading} + \text{Antenna Factor} + \text{Cable Factor}$$

6 Photographs - EUT Test Setup

6.1 Radiated Emission

9KHz~30MHz:

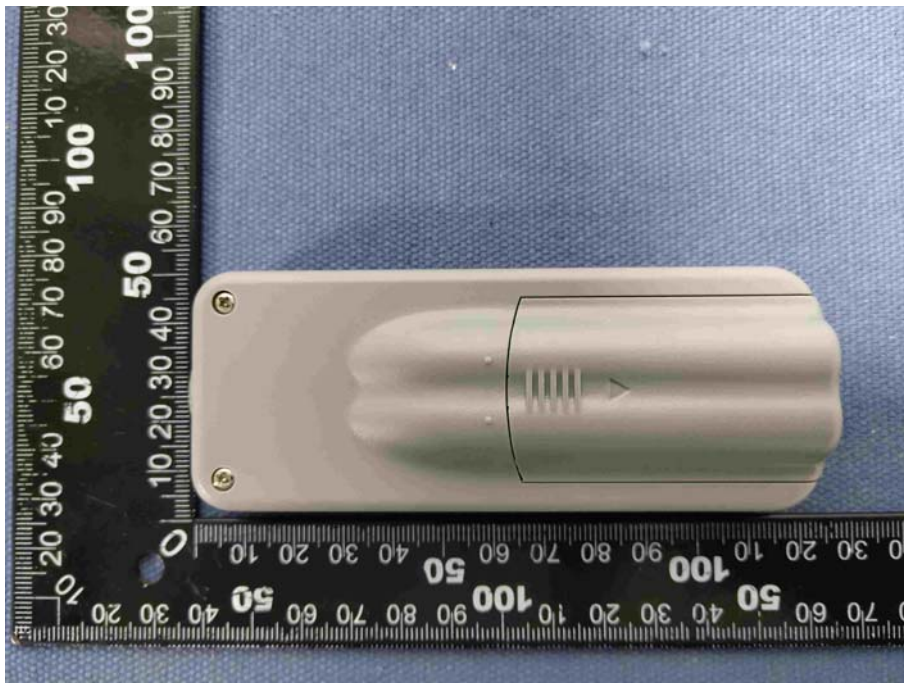


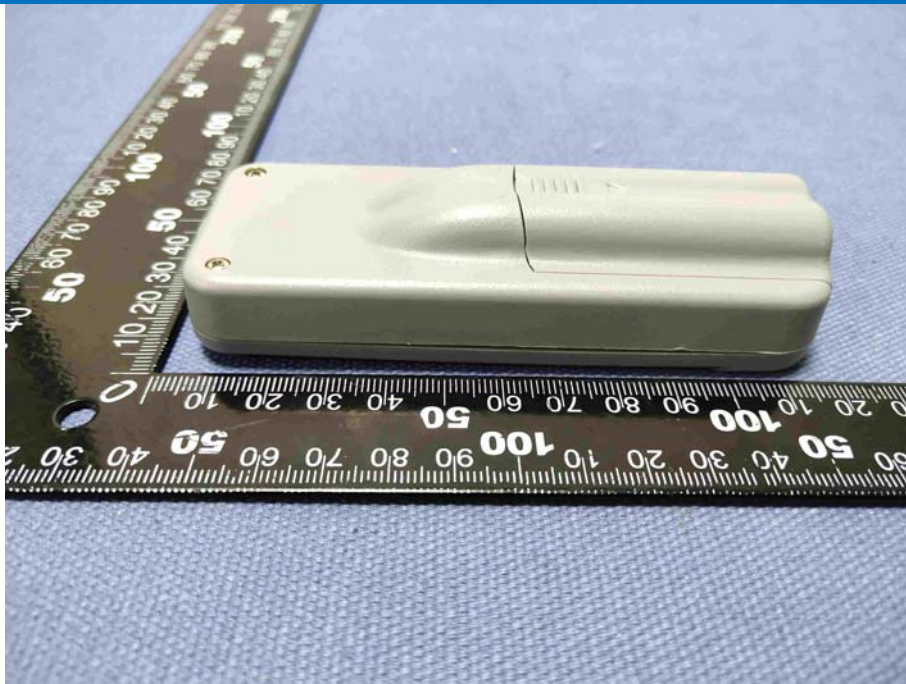
30MHz~1GHz:



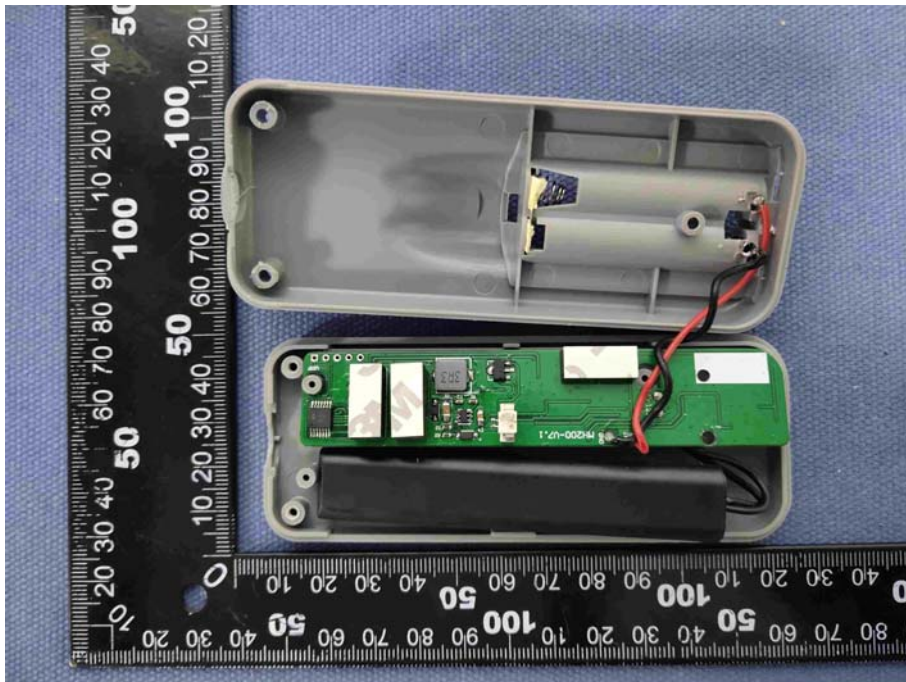
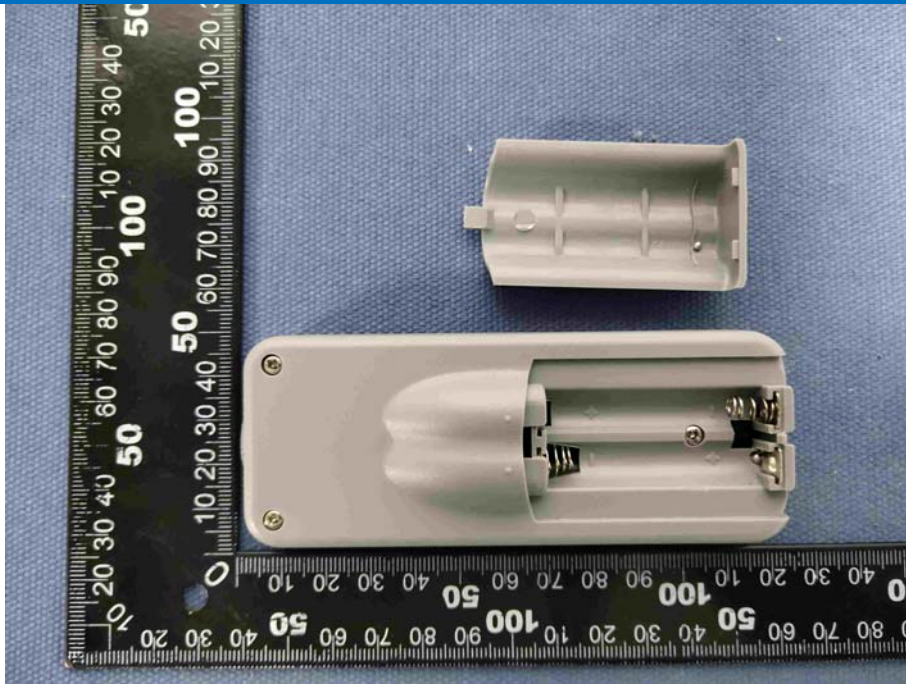
7 Photographs - EUT Constructional Details

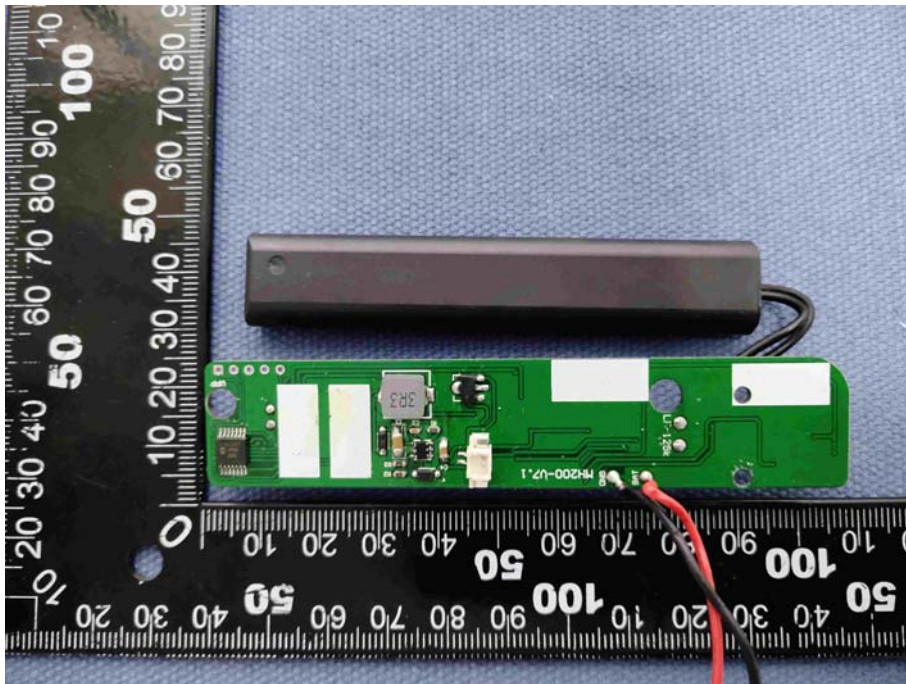
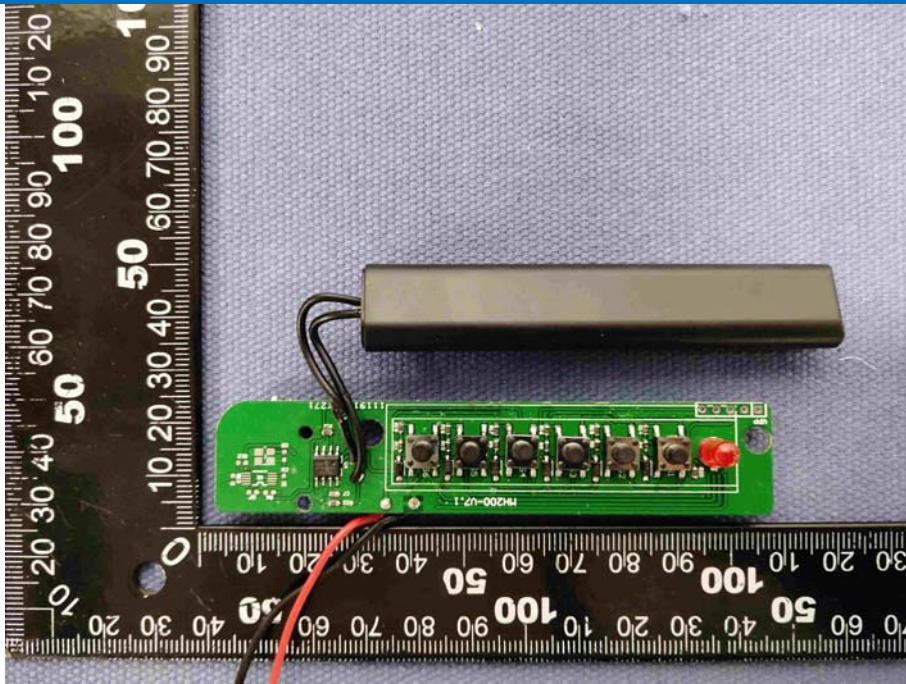
Test Model No.: 04.01.63

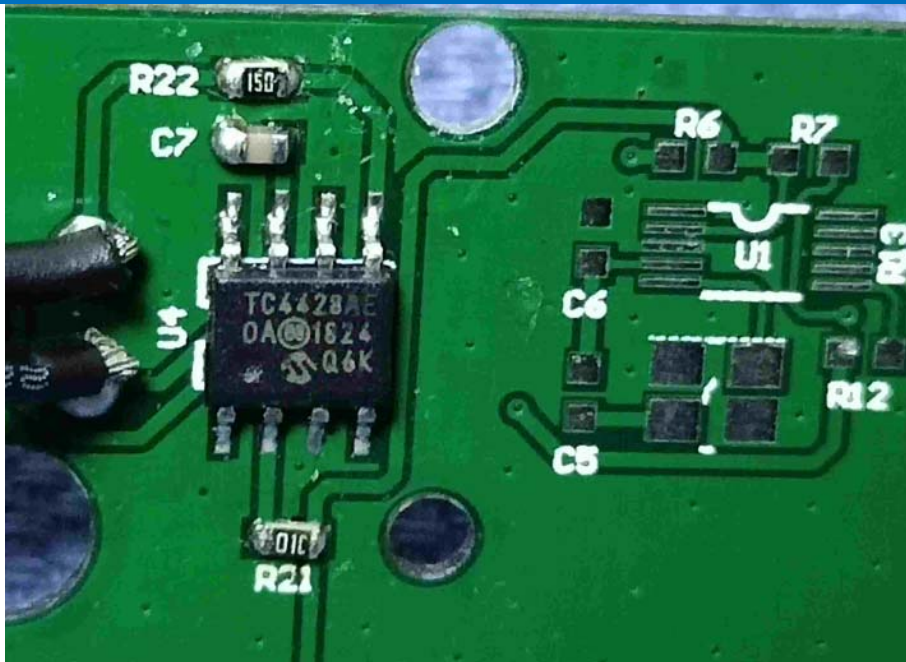












The End