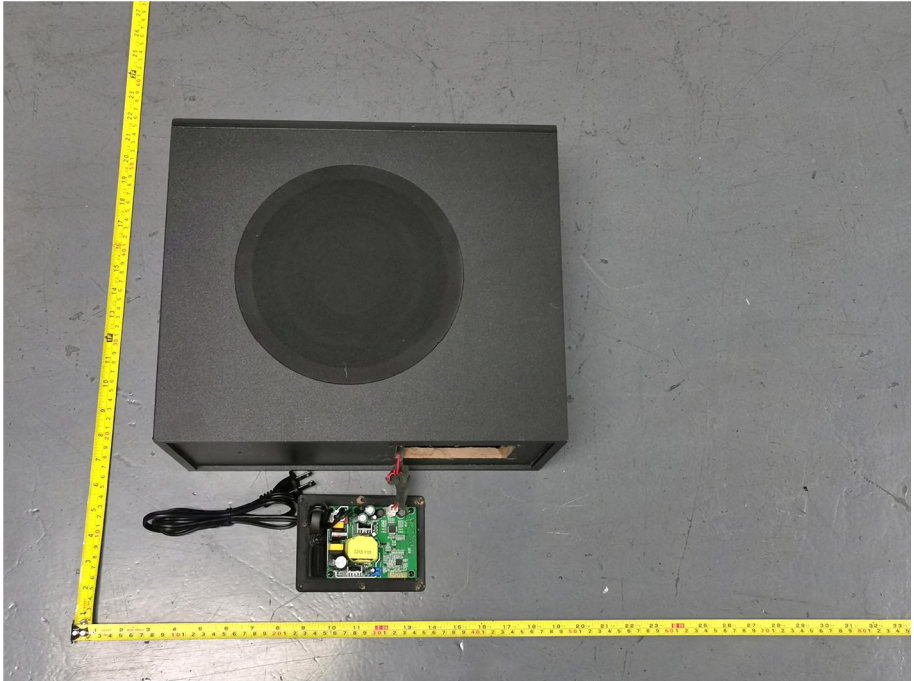
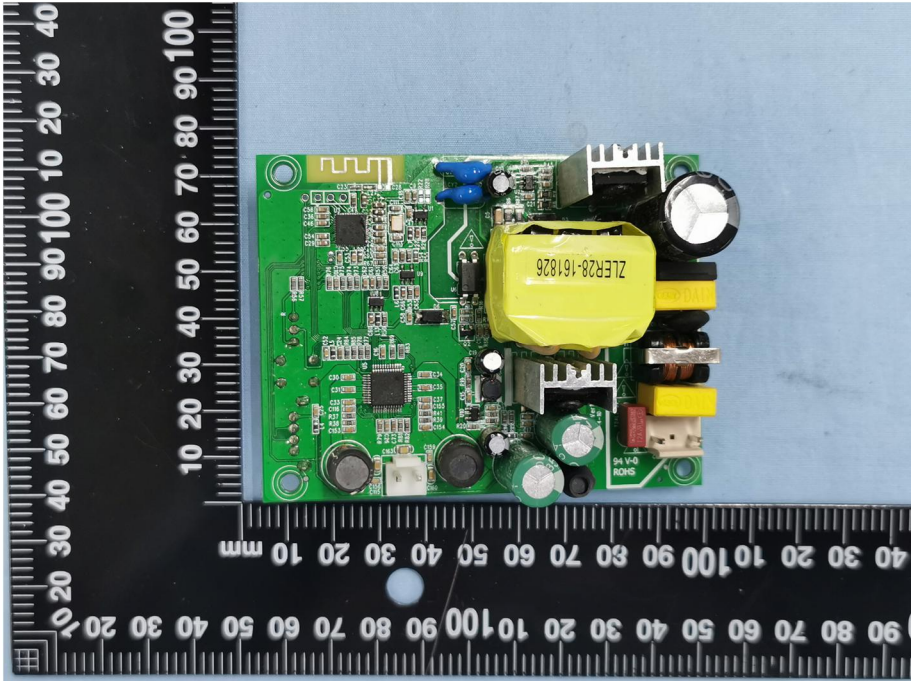
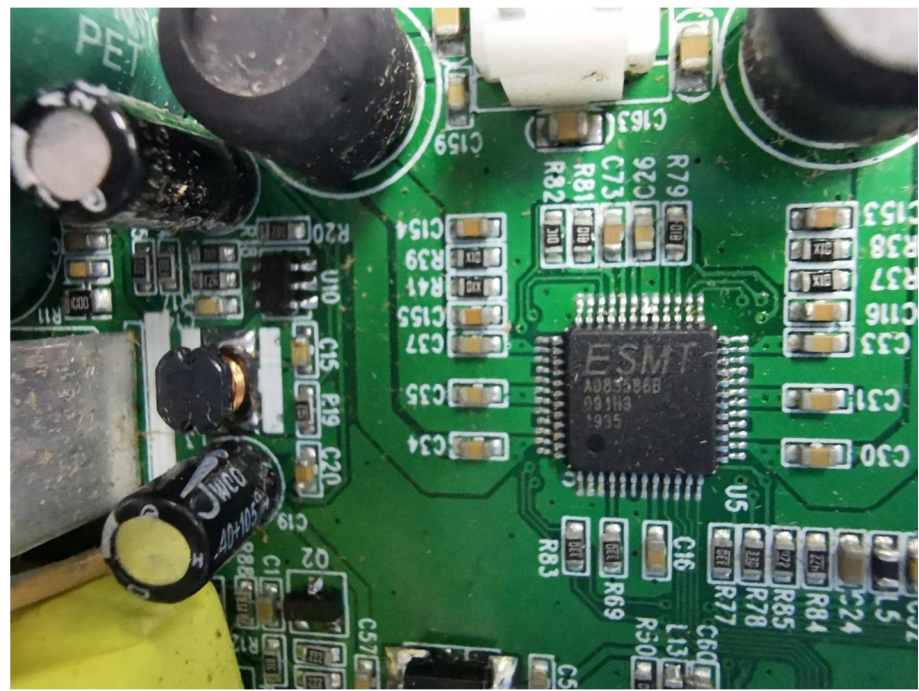
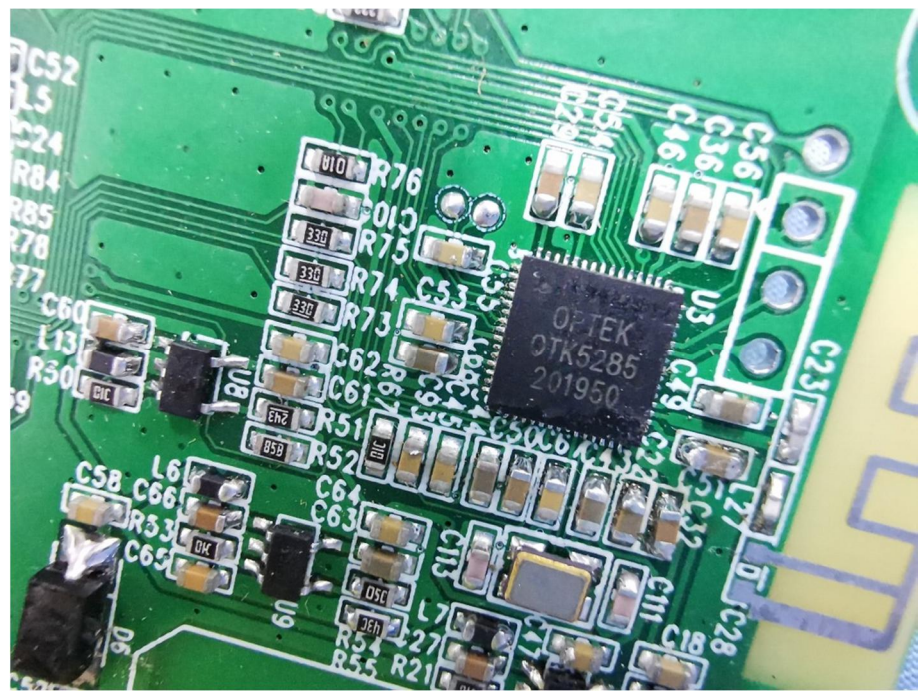
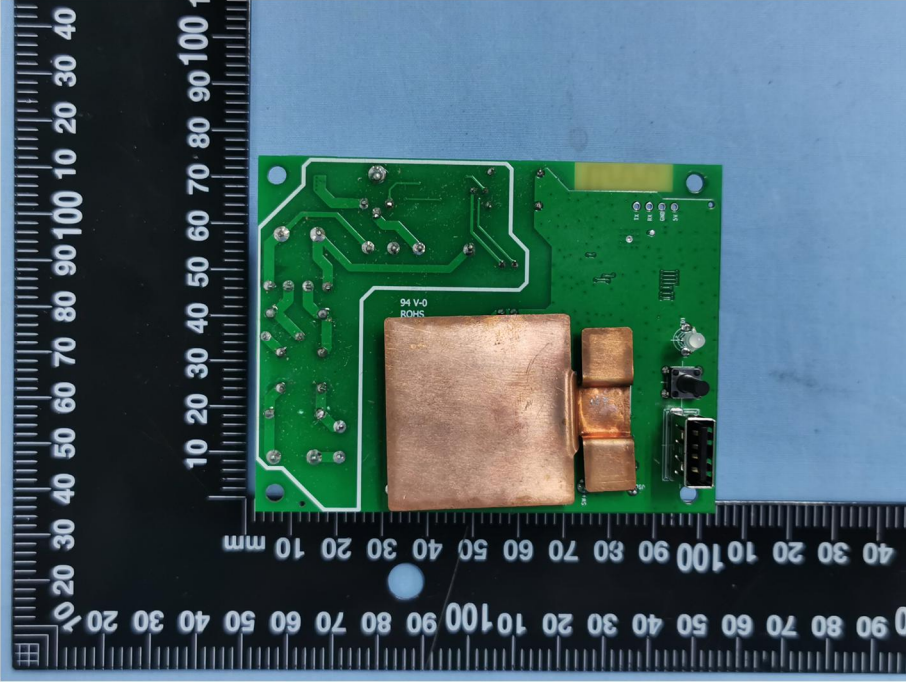
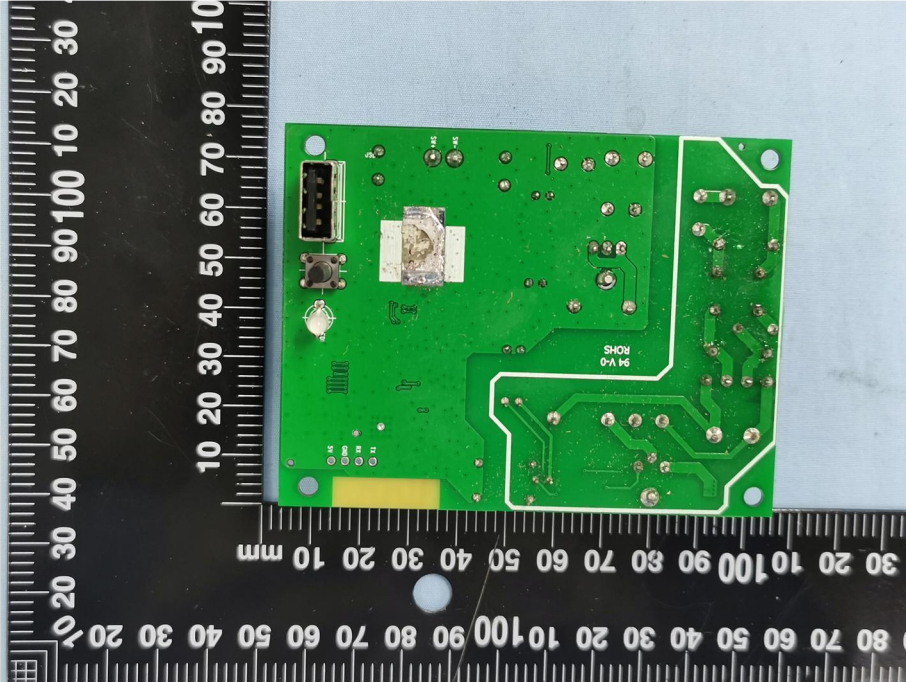


EXHIBIT 3 - EUT INTERNAL PHOTOGRAPHS

| | |
|---|--|
| <p>EUT Housing and Board View 1</p> |  A photograph showing the external view of a black, square-shaped Electronic Under Test (EUT) housing. A circular speaker grille is visible on the front face. Below the housing, a green printed circuit board (PCB) is connected to the bottom edge. A yellow measuring tape is placed around the housing and board to provide scale. |
| <p>Solder Board-Component View 1</p> |  A close-up photograph of the green PCB components. A yellow electrolytic capacitor is the most prominent feature, with the part number 'ZLER28-161826' printed on it. Other components include a black electrolytic capacitor, several resistors, and integrated circuits. A black ruler with white markings is placed to the left and bottom of the board for scale. |



| | |
|---|--|
| <p style="text-align: center;">Solder Board-Component View 2</p> |  <p>A photograph of a green printed circuit board (PCB) component, labeled 'Solder Board-Component View 2'. The board is rectangular and features a large, prominent copper-colored rectangular component in the center. To the right of this component, there is a smaller, similar copper-colored component. The board is populated with various electronic components, including several small surface-mount components and a connector on the right edge. The board is placed on a black background with a white ruler for scale. The ruler shows measurements in millimeters, with markings every 10 mm and sub-markings every 1 mm. The board's dimensions are approximately 100 mm by 100 mm.</p> |
| <p style="text-align: center;">Solder Board-Component View 3</p> |  <p>A photograph of a green printed circuit board (PCB) component, labeled 'Solder Board-Component View 3'. The board is rectangular and features a central component that appears to be a microchip or a similar integrated circuit. The board is populated with various electronic components, including several small surface-mount components and a connector on the left edge. The board is placed on a black background with a white ruler for scale. The ruler shows measurements in millimeters, with markings every 10 mm and sub-markings every 1 mm. The board's dimensions are approximately 100 mm by 100 mm.</p> |

Antenna View

