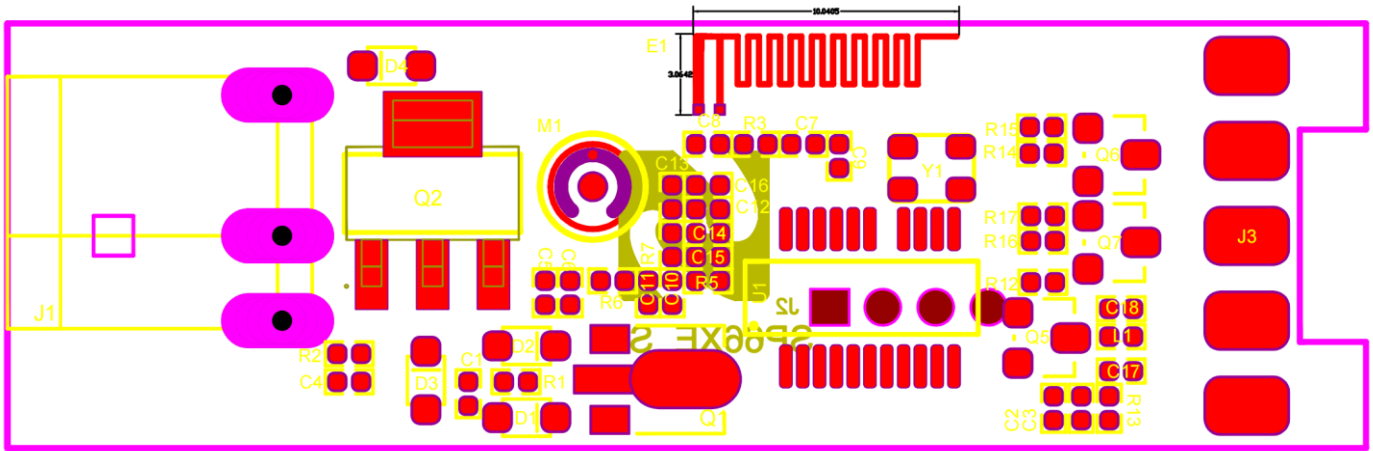


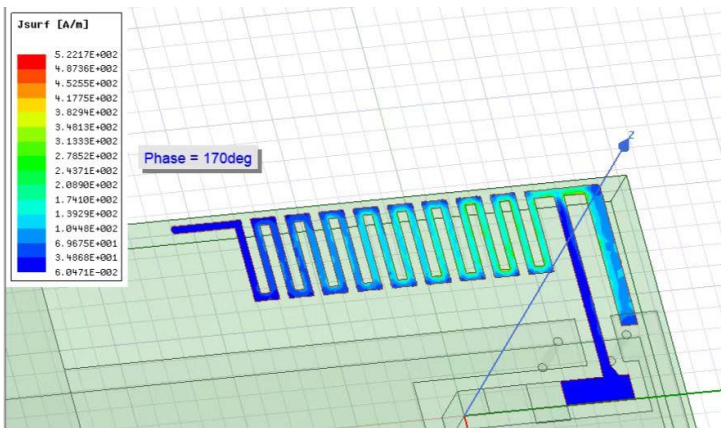
# SP66XE Antenna Specifications

## 1. Antenna location and size (mm) :

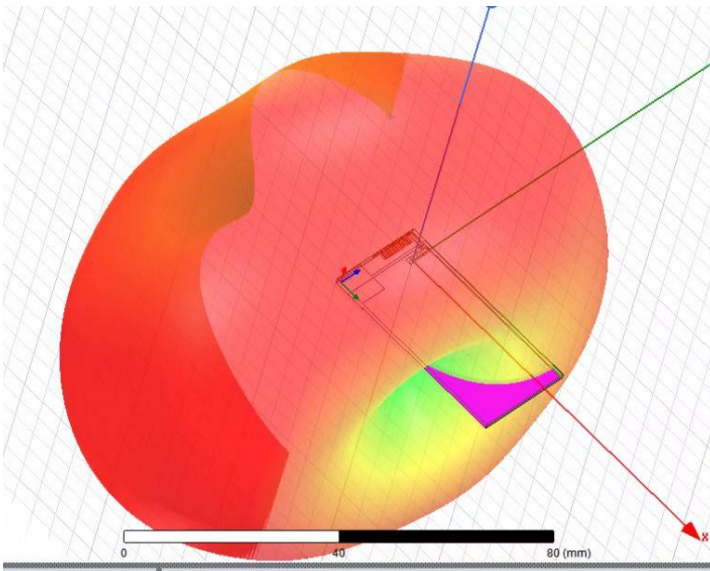


## 2. Antenna simulation Report:

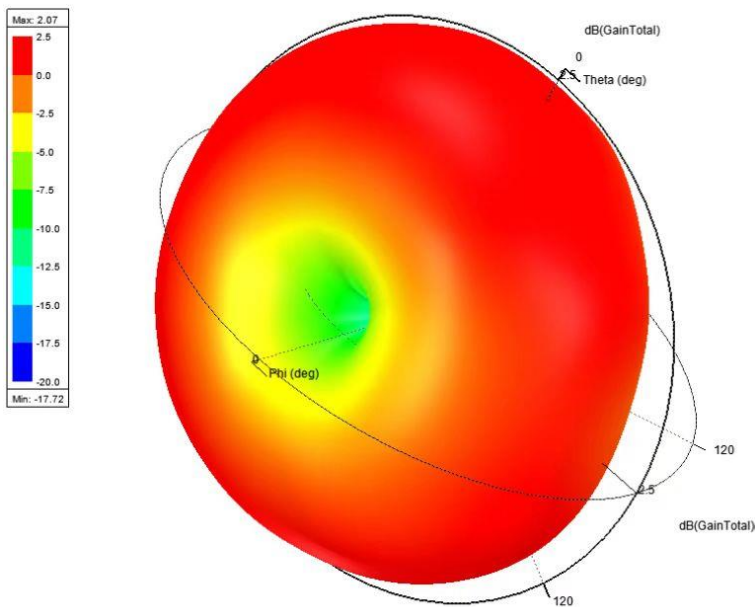
### 1) Antenna surface current distribution :



### 2) Antenna and antenna radiation pattern:

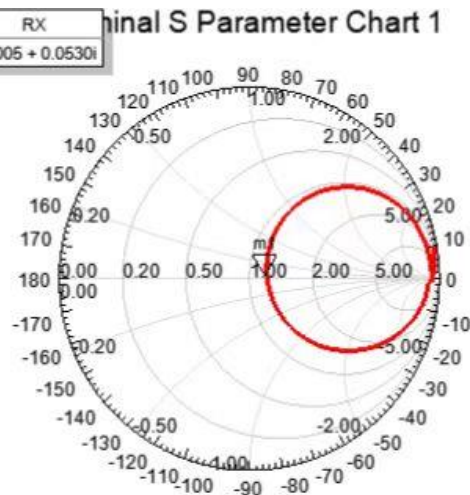


### 3) Antenna radiation pattern and gain pattern:

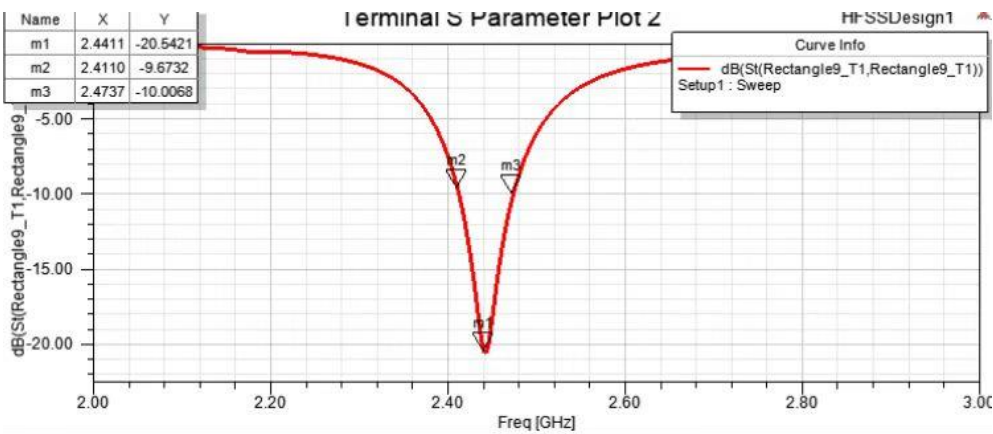


### 4) Smithchart:

Name	Freq	Ang	Mag	RX
m1	2.4436	13.4137	0.0942	1.2005 + 0.0530i

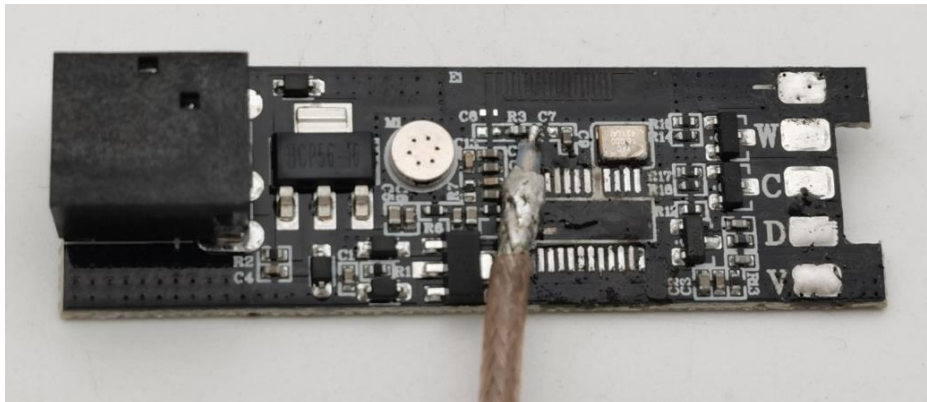


### 5) S Parameter Plot:

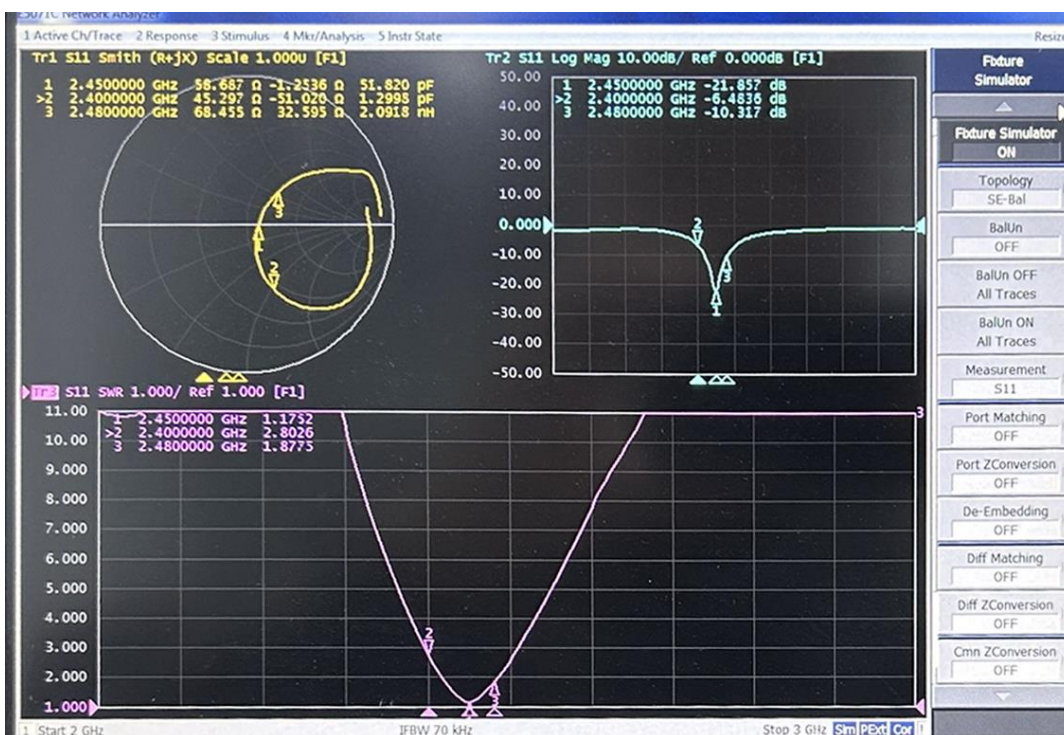


### 3. Test Report:

1) Appearance :



2) Antenna Smithchart , VSWR and Return Loss:



### 4. Basic Characteristics:

A. Electrical Characteristics:	
Frequency	2400~2500 MHz
S.W.R.	$\leq 2.5$ @ 2400~2500 MHz
Max. Gain	2.0 dBi @ 2400~2500 MHz
Efficiency	40~50% @ 2400~2500 MHz
Polarization	Linear
Impedance	50 Ohm
B. Material & Mechanical Characteristics:	
Material of Radiator	PCB
Cable Type	0.D.1.13 mm//112mm (gray)
Connector Type	NONE
Pull Test	/
C. Environmental:	

Operation Temperature	-40°C~+65°C
Storage Temperature	-40°C~+80°C

**5.Gain and Efficiency:**

frequency (GHz)	2.4	2.41	2.42	2.43	2.44	2.45	2.46	2.47	2.48	2.49	2.5
efficiency (%)	48.96	51.76	57.12	60.09	61.9	63.08	66.51	67.74	67.76	66.47	70.02
Gain (dBi)	1.89	1.92	1.94	2.00	2.00	2.00	1.96	1.98	2.00	1.98	2.00

Manufacturer: Shenzhen Sperll Optoelectronic Technology Co., Ltd.

Address: 4th Floor, Building 3, NO.1059 Songbai Road, Nanshan District, Shenzhen, China