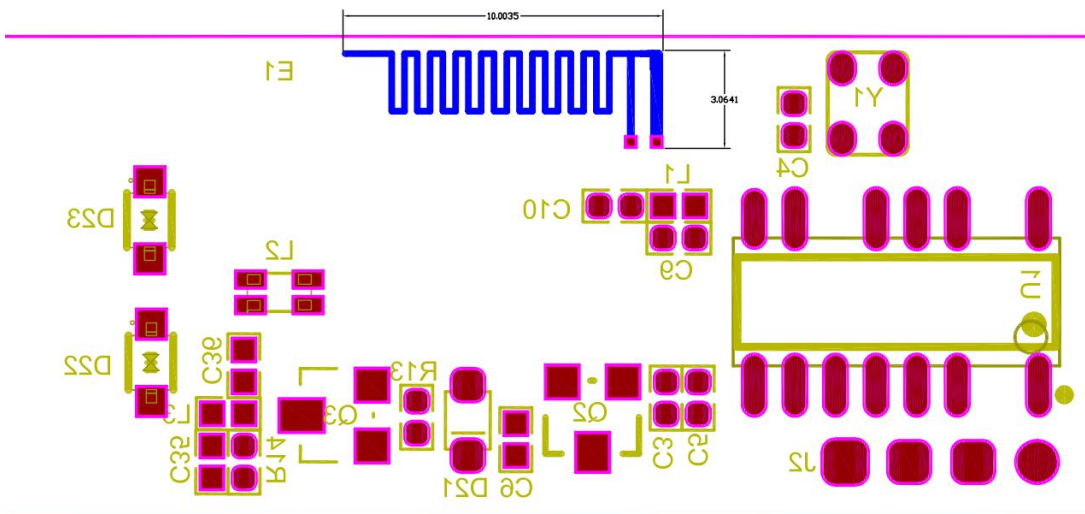


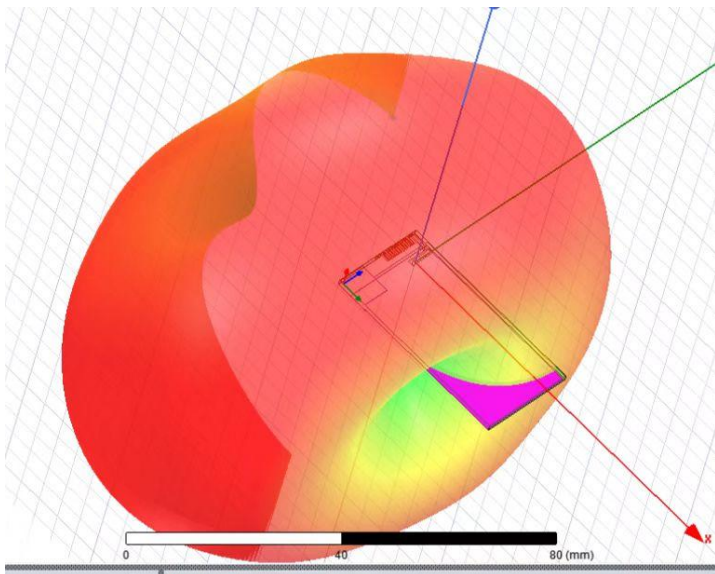
## DynamicBar Antenna Specifications

### 1. Antenna location and size (mm) :

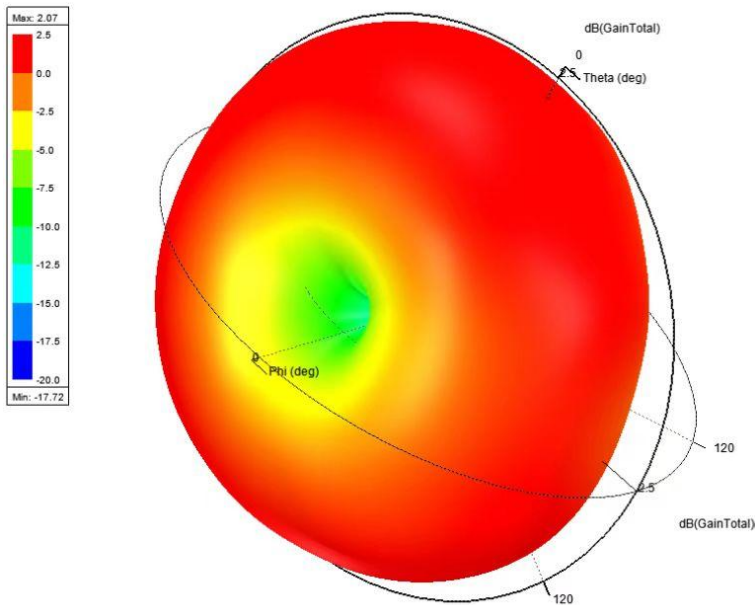


### 2. Antenna simulation Report:

#### 1) Antenna and antenna radiation pattern:

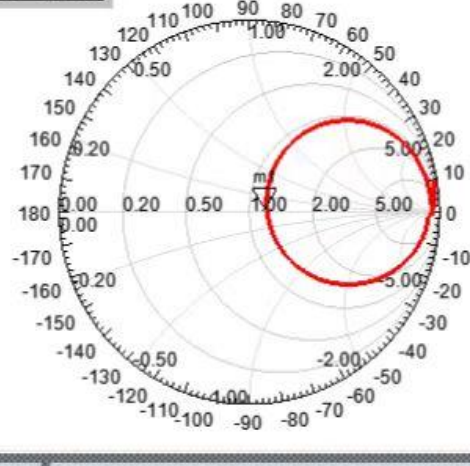


#### 2) Antenna radiation pattern and gain pattern: :

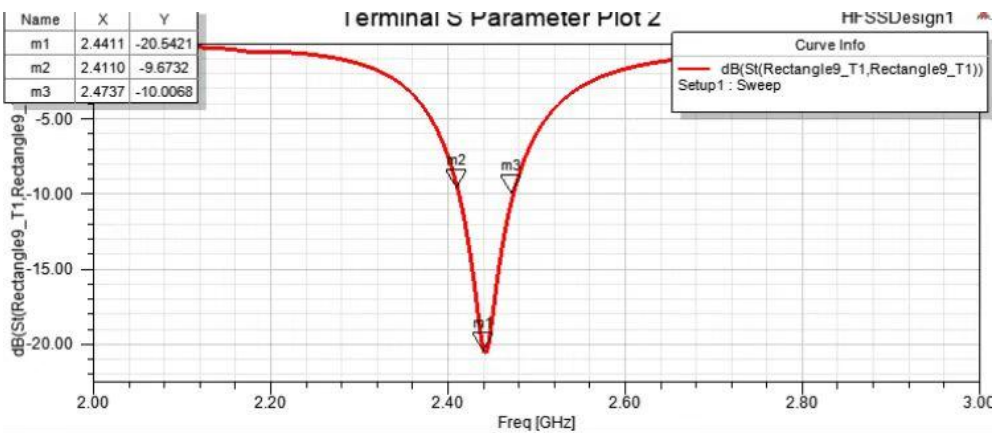


### 3) Smithchart:

Name	Freq	Ang	Mag	RX
m1	2.4436	13.4137	0.0942	1.2005 + 0.0530i

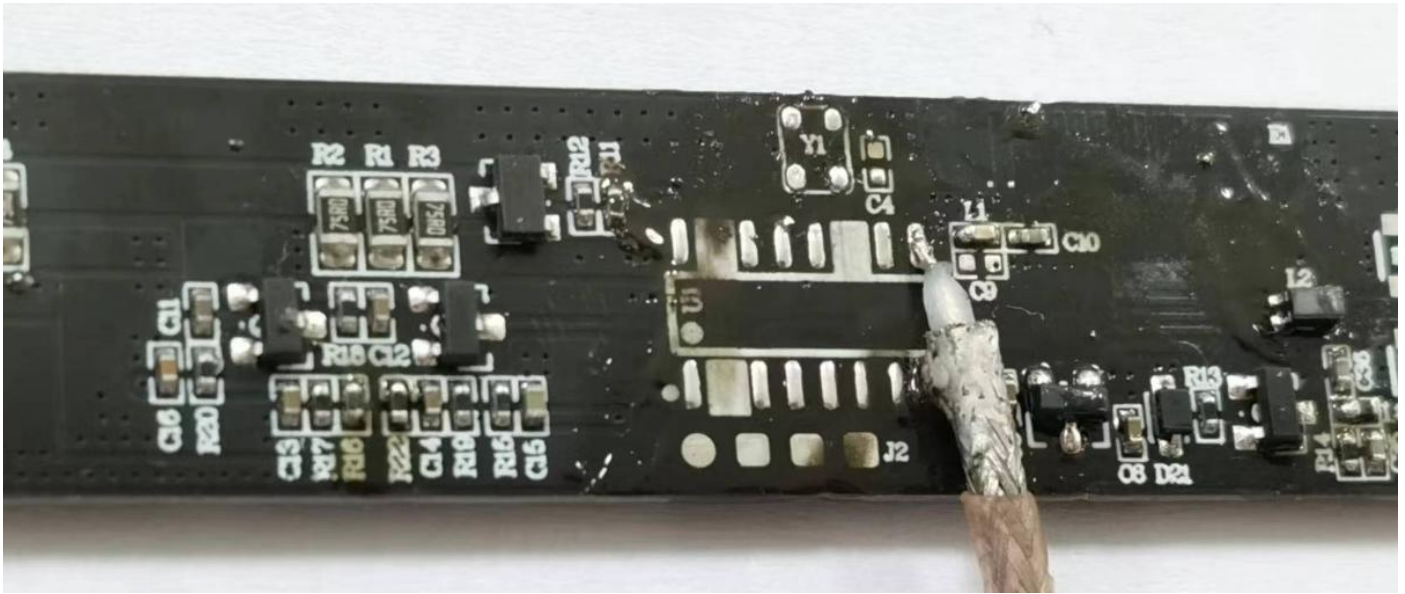


### 4) S Parameter Plot:

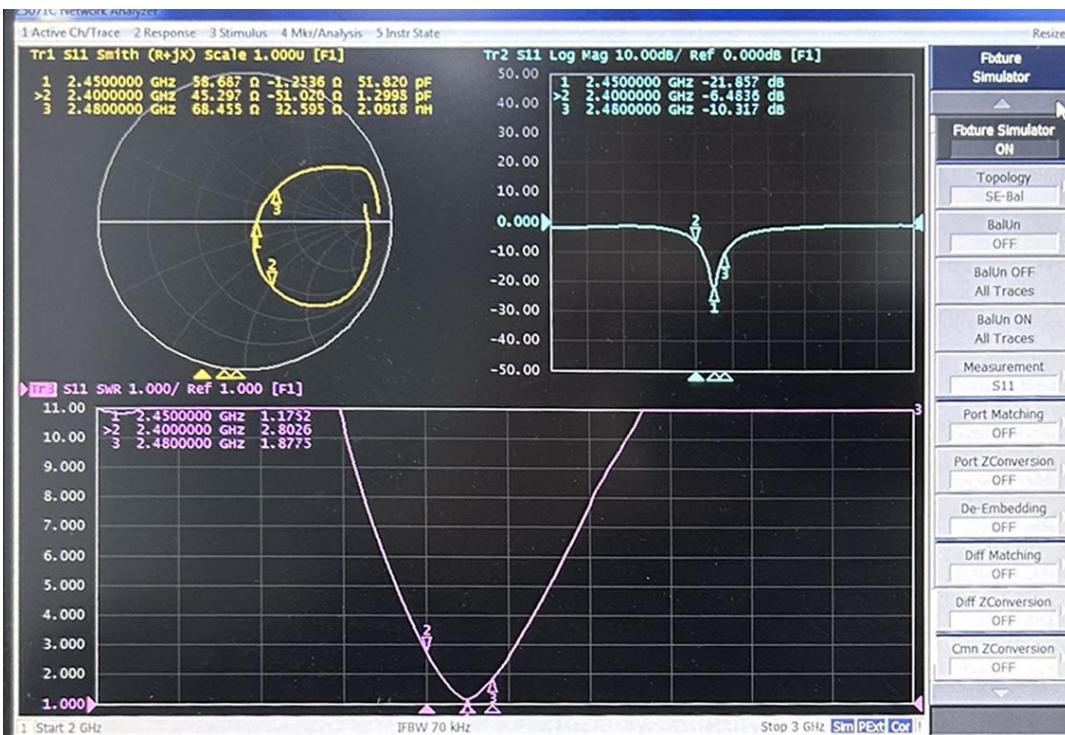


### 3. Test Report:

#### 1) Appearance :



#### 2) Antenna Smithchart ,VSWR and Return Loss:



### 4. Basic Characteristics:

A. Electrical Characteristics:	
Frequency	2400~2500 MHz
S.W.R.	$\leq 2.5$ @2400~2500 MHz
Max.Gain	1.32 dBi @2400~2500 MHz
Efficiency	40~50% @2400~2500 MHz
Polarization	Linear
Impedance	50 Ohm

<b>B.Material &amp; Mechanical Characteristics:</b>	
Material of Radiator	PCB
Cable Type	0.D.1.13 mm//112mm (gray)
Connector Type	NONE
Pull Test	/
<b>C.Environmental:</b>	
Operation Temperature	-40°C~+65°C
Storage Temperature	-40°C~+80°C

**5.Gain and Efficiency:**

frequency (GHz)	2.4	2.41	2.42	2.43	2.44	2.45	2.46	2.47	2.48	2.49	2.5
efficiency (%)	48.96	51.76	55.12	60.09	62.9	63.08	67.51	67.74	67.76	66.47	71.02
Gain (dBi)	1.03	1.18	1.31	1.12	1.2	0.98	1.23	1.3	1.32	1.3	1.13