

**onn.**<sup>TM</sup>

**Bookshelf  
Speakers**

100008403

---

**PRODUCT GUIDE**

Ver.00 07/24/19


# Information & Safety Instructions

## Customer Service

For any product related questions, please call us at: 1-888-999-4215.

Copyright © 2019 Digital Products International (DPI, Inc.) All other trademarks appearing herein are the property of their respective owners. Specifications are subject to change without notice.

## Important Safety Instructions

- Read these Instructions.
- Keep these Instructions.
- Heed all Warnings.
- Follow all instructions.
- Do not use this apparatus near water.
- Clean only with a dry cloth.
- Do not block any ventilation openings. Install in accordance with the manufacturer's instructions.
- Do not install near any heat sources such as radiators, heat registers, stoves, or other apparatus (including amplifiers) that produce heat.
- Do not defeat the safety purpose of the polarized or grounding - type plug. A polarized plug has two blades with one wider than the other. A grounding type plug has two blades and a third grounding prong. The wide blade or the third prong are provided for your safety. When the provided plug does not fit into your outlet, consult an electrician for replacement of the obsolete outlet.
- Protect the power cord from being walked on or pinched particularly at plugs, convenience receptacles, and the point where they exit from the apparatus.
- Only use attachments/accessories specified by the manufacturer.
- Unplug this apparatus during lightning storms or when unused for long periods of time.
- Refer all servicing to qualified service personnel. Servicing is required when the apparatus has been damaged in any way, such as power-supply cord or plug is damaged, liquid has been spilled or objects have fallen into the apparatus, the apparatus has been exposed to rain or moisture, does not operate normally, or has been dropped.
- Use only with a cart, stand, tripod, bracket, or table specified by the manufacturer, or sold with the apparatus. When a cart is used, use caution when moving the cart/apparatus combination to avoid injury from tip-over. 

## FCC Warnings

Warning: Changes or modifications to this unit not expressly approved by the party responsible for compliance could void the user's authority to operate the equipment.

NOTE: This equipment has been tested and found to comply with the limits for a Class B digital device, pursuant to Part 15 of the FCC Rules. These limits are designed to provide reasonable protection against harmful interference in a residential installation. This equipment generates, uses, and can radiate radio frequency energy and, if not installed and used in accordance with the instructions, may cause harmful interference to radio communications. However, there is no guarantee that interference will not occur in a particular installation. If this equipment does cause harmful interference to radio or television reception, which can be determined by turning the equipment off and on, the user is encouraged to try to correct the interference by one or more of the following measures:

- Reorient or relocate the receiving antenna.
- Increase the separation between the equipment and receiver.
- Connect the equipment into an outlet on a circuit different from that to which the receiver is connected.
- Consult the dealer or an experienced radio/TV technician for help.

## Additional Warnings and Precautions

- CAUTION: TO PREVENT ELECTRIC SHOCK, MATCH WIDE BLADE OF PLUG TO WIDE SLOT, FULLY INSERT.
- Mains plug is used as disconnect device and it should remain readily operable during intended use. In order to disconnect the apparatus from the mains completely, the mains plug should be disconnected from the mains socket outlet completely.
- CAUTION: Use of controls or adjustments or performance of procedures other than those specified may result in hazardous radiation exposure.
- WARNING: Changes or modifications to this unit not expressly approved by the party responsible for compliance could void the user's authority to operate the equipment.
- WARNING: Use of this unit near fluorescent lighting may cause interference regarding use of the remote. If the unit is displaying erratic behavior move away from any fluorescent lighting, as it may be the cause.
- WARNING: Shock hazard - Do Not Open.
- Caution and marking information is located at the rear or bottom of the apparatus.
- WARNING: To reduce the risk of fire or electric shock, do not expose this apparatus to rain, moisture, dripping, or splashing.
- Objects filled with liquids, such as vases, shall not be placed on the apparatus.



Warning: To reduce the risk of electric shock, do not remove cover (or back). No user-serviceable parts inside. Refer servicing to qualified service personnel.



The exclamation point within an equilateral triangle is intended to alert the user to the presence of important operating and maintenance (servicing) instructions in the literature accompanying the appliance.



The lightning flash with arrowhead symbol, within an equilateral triangle, is intended to alert the user to the presence of uninsulated "dangerous voltage" within the product's enclosure that may be of sufficient magnitude to constitute a risk of electric shock to persons.



This symbol indicates that this product incorporates double insulation between hazardous mains voltage and user accessible parts.



WARNING : This product can expose you to chemicals including lead, which is known to the State of California to cause cancer and birth defects or other reproductive harm. For more information go to [www.P65Warnings.ca.gov](http://www.P65Warnings.ca.gov). This product meets and complies with all Federal regulations.

# Table of Contents

## **Get to Know Your Speakers–5**

Features–5

What's in the Box?–5

Front–6

Rear–6

Controls–7

Remote–8

Remote Battery–9

## **Let's Get Started–10**

Connect Your Speakers–10

Power On Your Speaker–10

## **Connecting to a Bluetooth Speaker–11**

## **Connecting to External Audio Sources–12**

RCA Connection –12

3.5mm Audio Cable Connection –12

# Get to Know Your Speakers

## Features

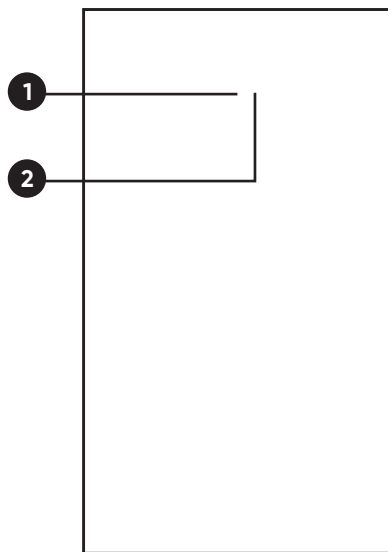
- Supports Bluetooth 5.0
- Aux In (RCA stereo input)
- Line In (3.5mm audio input)

## What's in the Box?

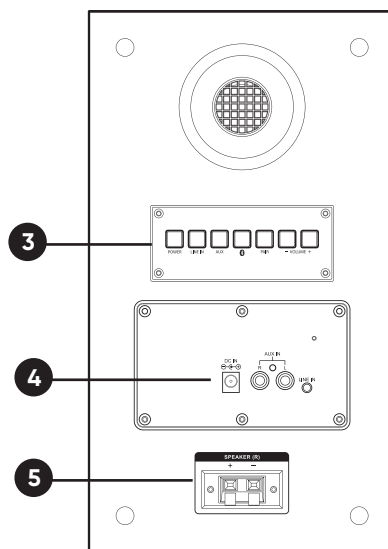
- Speakers
- Remote Control with pre-installed CR2025 battery
- AC power adapter with cable
- RCA cable
- Speaker connection wire
- Quick Start Guide

# Get to Know Your Speakers

Front

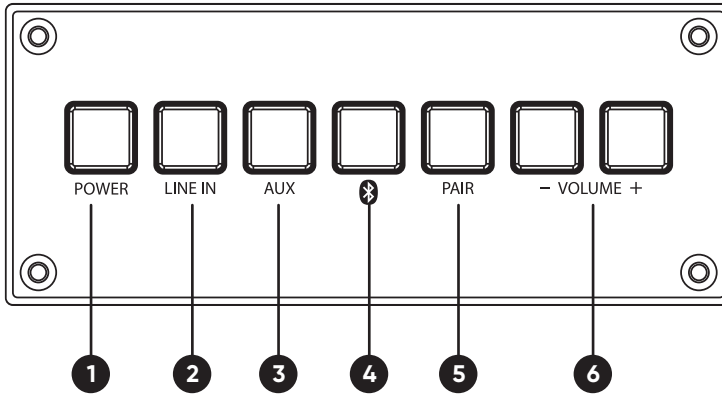


Rear



1. Source Mode Indicator LED
2. Remote Sensor
3. Speaker Controls
4. Speaker Inputs
5. Speaker to Speaker Connection (L/R)

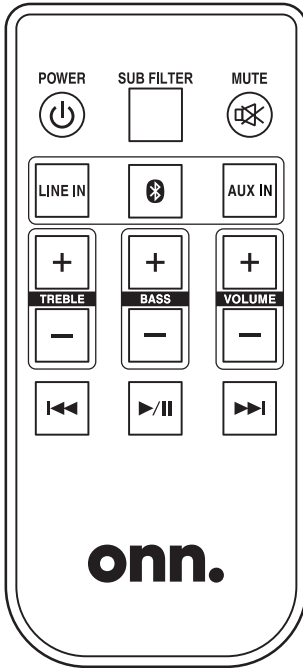
## Controls



1. **Power:** Press to power ON.  
Press and hold to power OFF.
2. **Line In:** Press to select Line In Mode, indicated by a green LED on the front of the speaker.
3. **Aux:** Press to select Aux Mode, indicated by a white LED on the front of the speaker.
4. **Bluetooth:** Press to select Bluetooth Mode, indicated by a blue LED on the front of the speaker.
5. **Pair:** Press to begin Bluetooth pairing. The indicator on the front of the speaker will flash quickly while pairing, then turn solid when successfully paired.
6. **Volume +/-:** Press to adjust the volume level of the speakers.

# Get to Know Your Speakers

## Remote



**Power:** Press to power ON or OFF.

**Sub Filter:** Press to filter out low level audio interference, such as imperfections on vinyl record playing from a turntable.

**Mute:** Press to mute the volume.

**Line In:** Press to select Line In Mode, indicated by a green LED on the front of the speaker.

**Bluetooth:** Press to select Bluetooth Mode, indicated by a blue LED on the front of the speaker.

**Aux In:** Press to select Aux Mode, indicated by a white LED on the front of the speaker.

**Treble +/-:** Press to adjust the treble level of the speakers.

**Bass +/-:** Press to adjust the bass level of the speakers.

**Volume +/-:** Press to adjust the volume level of the speakers.

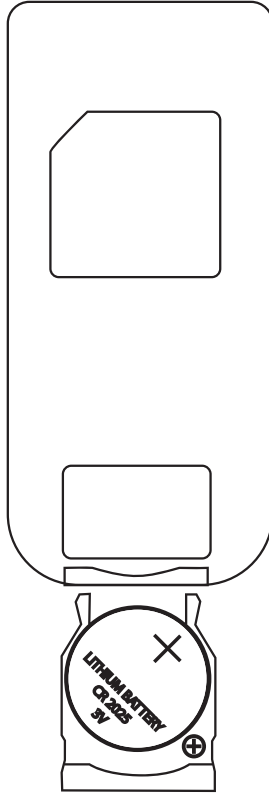
**Double Left Arrow Double Right Arrow:** Press to skip audio tracks (Bluetooth Mode).

**Right Arrow Vertical Bar:** Press to play or pause audio tracks (Bluetooth Mode).



## Remote Battery

Requires 1 CR2025 button cell battery (included).

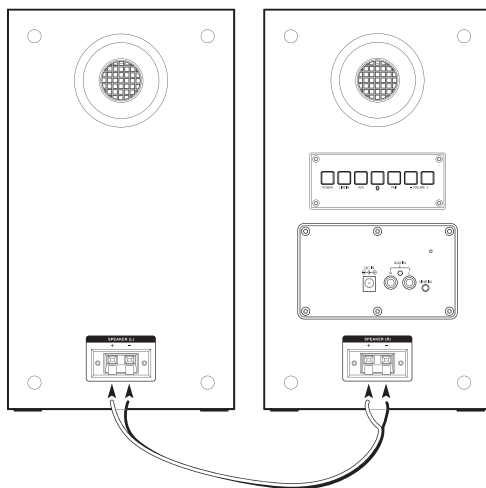


 Slide Out

# Let's Get Started

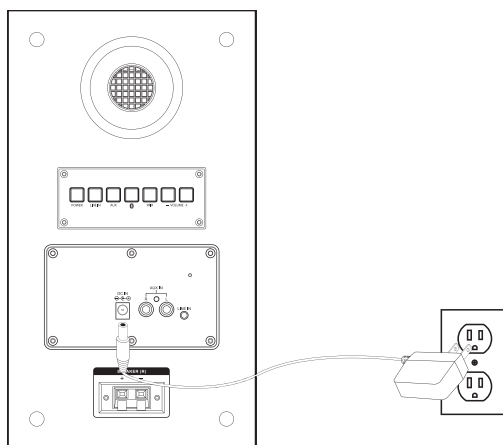
## Connect Your Speakers

Connect the speakers using the included speaker cable. Match the colored wires to the same color-coded ports.



## Power On Your Speaker

- Plug the power adapter into the DC power input on the speaker and a standard outlet.
- Press the Power button to turn the speakers ON.



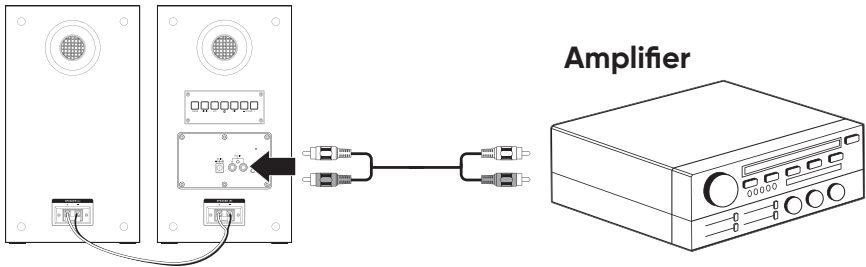
## Connecting to a Bluetooth Speaker

- When the speakers first power ON they default to Bluetooth Mode and are ready to pair automatically. When pairing, remain within 3 feet of the Bluetooth device.
- Using the controls on your Bluetooth device, select ONN8403 in the Bluetooth Settings to pair. If need be, refer to the user's manual for your specific device for more information.
- When successfully paired, a voice will announce, "Bluetooth is connected." You will now hear audio from your Bluetooth device through the speakers.
- Use the controls on the connected Bluetooth device to select and play audio.

## Connecting to External Audio Sources

### RCA Connection

- You can connect the speakers to an audio system using an RCA stereo audio cable (included). Just connect the color-coded ports on the speaker to the same ports on your audio device.
- Next, press the Aux button on the back of the speaker or press the Aux Mode button on the remote



### 3.5mm Audio Cable Connection

- You can also connect the speakers using a 3.5mm audio cable (not included). Just connect the Line In on the speakers to the headphone jack on your audio device.
- Next, press the Aux button on the back of the speaker or press the Aux Mode button on the remote

