

## Product Manual

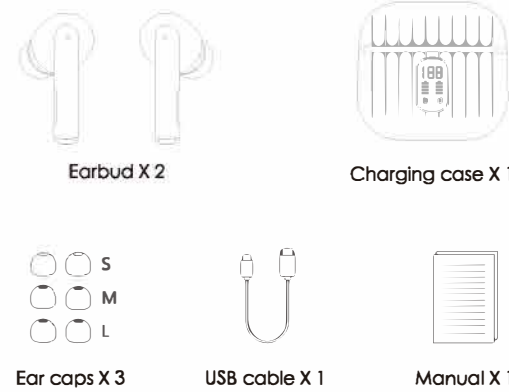
Warning: Changes or modifications to this unit not expressly approved by the party responsible for compliance could void the user's authority to operate the equipment.

This device complies with part 15 of the FCC Rules. Operation is subject to the following two conditions: (1) This device may not cause harmful interference, and (2) this device must accept any interference received, including interference that may cause undesired operation.

FCC Statement: This equipment has been tested and found to comply with the limits for a Class B digital device, pursuant to part 15 of the FCC Rules. These limits are designed to provide reasonable protection against harmful interference in a residential installation. This equipment generates, uses and can radiate radio frequency energy and, if not installed and used in accordance with the instructions, may cause harmful interference to radio communications. However, there is no guarantee that interference will not occur in a particular installation. If this equipment does cause harmful interference to radio or television reception, which can be determined by turning the equipment off and on, the user is encouraged to try to correct the interference by one or more of the following measures:  
—Reorient or relocate the receiving antenna.  
—Increase the separation between the equipment and receiver.  
—Connect the equipment into an outlet on a circuit different from that to which the receiver is connected.  
—Consult the dealer or an experienced radio/TV technician for help.

## Start

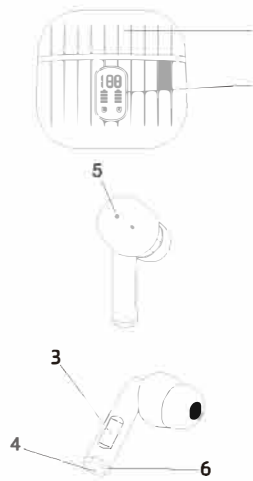
### Accessories inside each box:



02

### Product scheme

1. Charging case
2. Charging case digital display
3. Press sensitive multi-function key
4. Microphone
5. Sound release hole
6. Magnetic charging pin



### Specification

Wireless version:5.1  
Impedance:32Ω  
Working Distance:>10m  
Battery for earbud:35mAh  
Battery charging case:380mAh  
Music Play:6h  
Calling:3.5h  
Charging Time for charging case:2h

04

## Key Actions

<b>R L</b> Single Press	Play/ Pause
<b>R L</b> Single Press	Answer/ HangUp the call
<b>R L</b> Press and hold for 1.5 seconds	Call Satus:Reject the call
<b>R L</b> Press and hold for 1.5 seconds	Summons Siri
<b>R L</b> Long press and hold for 2 seconds	Power On
<b>R L</b> Long press and hold for 5 seconds	Power Off
<b>R</b> Triple Press Volume +	<b>L</b> Triple Press Volume -
<b>R</b> Double-click Next Song	<b>L</b> Double-click Last Song

06

## Music

### Pause

Quick press on L/R multi-function key once to pause music under music mode.(Some mobile phones might require to activate music player before that)

### Play

Quick press on L/R multi-function key once to start music playing under music mode.(Some mobile phones might require to activate music player before that)



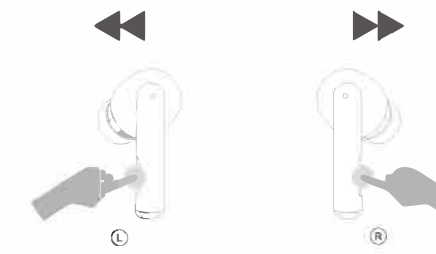
08

### Next

Quick press on R multi-function key twice to switch to next song.

### Last

Quick press on L multi-function key twice to go back to last song.



Activate Siri : Press and hold function key for 1.5 seconds

10

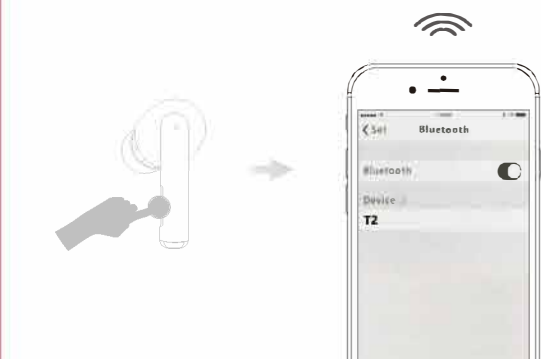
## Safety Instruction

1. Using earphone at high to moderate volumes for extended periods of time will result in permanent hearing damage. It is advised you keep volume levels moderate to low at times for your safety.
2. Do not use while driving a car, cycling, operating machinery, or performing other activities that require hearing surrounding sounds.
3. Do not use earphone in thunderstorm weather, the earphone may not work properly in the condition, and increase the risk of being hit by lightning.
4. Earphone may not work properly under high temperature or high humidity conditions. Do not use any corrosive cleaner/oil to clean the earphone.
5. If the earphone comes in contact with liquids, quickly wipe away.
6. If submersed in water, do not turn the earphone on until completely dried.  
(Tips: liquid submersion voids the warranty.)
7. Keep the earphone and packaging out of reach of children.
8. Please use the original charging cable provided by the earphone manufacturer for charging and choose the.

12

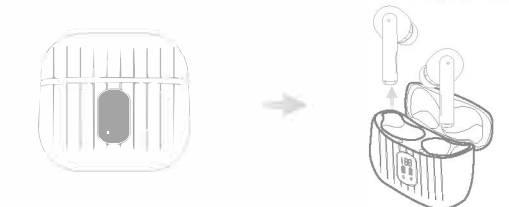
## Pairing

Taking out earphones from charging case and put them close to each other, TWS pairing will complete automatically. Turn on mobile phone BT, searching device name T2, and single click on T2 to complete initial pairing.



## Power on

Earphones turn on automatically after taking out from charging case.



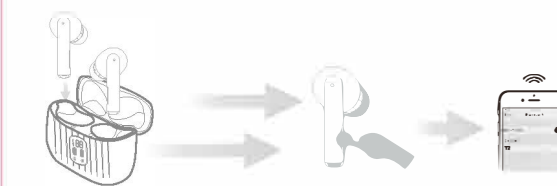
Put ear buds back to charging box and close the case, they will turn off automatically.



## Mono & stereo usage

### Mono sound usage

Keep one ear bud in charging case and close the case, it will disconnect and stop working automatically. And the other ear bud outside can work normally.



### Stereo sound usage

Taking out two earphones from charging box at the same time, keep them within the distance of 10cm/33ft, L/R ear buds will start pairing automatically. Turn on mobile phone BT and search T2 device, and then single click on device name T2 to complete pairing.

05

## Incoming call

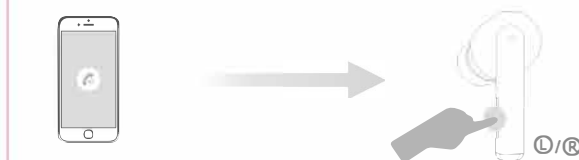
### Answer call/ end call

Single press on L/R multifunction key.



### Reject call

Long press on L/R multifunction key for 1.5s.



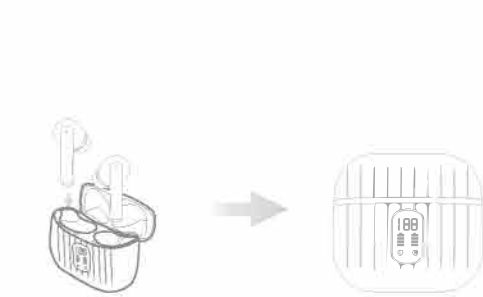
Attention: Ear buds can be used separately or at the same time.

07

## Charging

### Earbuds charging

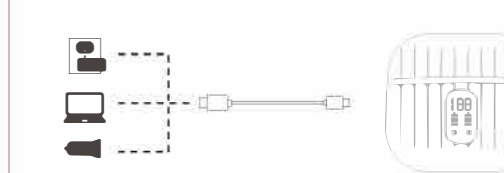
Place ear buds back to charging box. L/R indicator of charging case's digital display will flash intervally, the indicator will be off after being fully charged.



09

### Charging for charging box

While the digital display on charging case shows figure 1, it means the charging case will run out of power soon, please recharge it in time.



11

## FAQ

Q: Why these earbuds can not pair with my mobile phones?

- A: 1. Please make sure the earbuds are full charged and power on.  
2. Please make sure the bluetooth of your phone is turn on.  
3. If above 2 points have no problem, please put earbuds into the case again and close the case, hold on for 1 min, then open the charging case and reconnect earbuds with your phone.

Q: Why does the music cut in or cut out?

A: First, please do not let the distance between these earbuds and your phone more than 33 feet (without obstacle). If the distance less than 33 feet, please note 2 tips as below:

1. Please make sure there is no obstacle between the earbuds and your device.
2. Please make sure there is no Microwave oven/Wifi transmitter around you, which are more likely to produce electromagnetic interference and result in signal interruption.

Q: Why does the earbuds can not be charged and not disconnected with my phone even earbuds are put into case and I have closed the case?

A: Please make sure the charging case are not in low battery. If the charging case are in low battery, earbuds can not be charged and not disconnected even though they are in case. So, please use the type-c cable to charge the case fully.

13