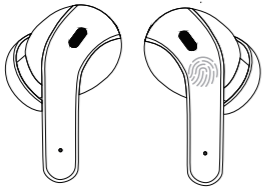


English

# Instruction Manual

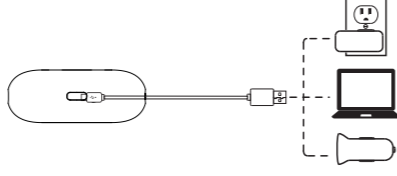
X15



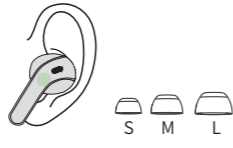
Please read the instructions before use

## Before Use

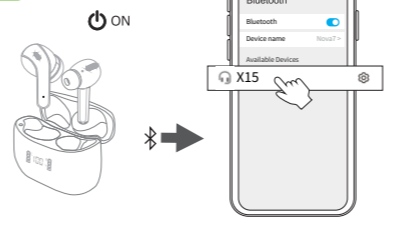
1. Fully charge the earbuds and charging case.



2. Choose the right angle and eartips.



## Connect



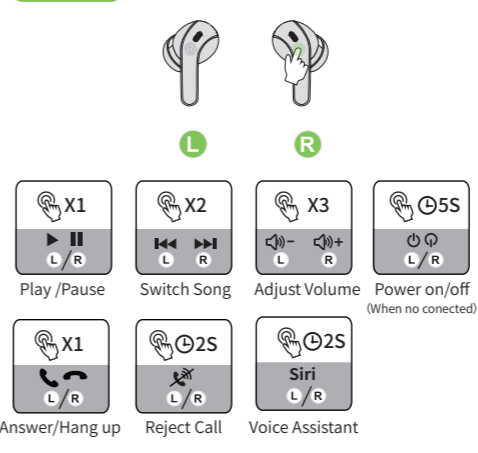
1. Take out the earbuds (Earbuds auto power on)
2. After open the phone Bluetooth, Click the <X15> to Pairing

## Reset

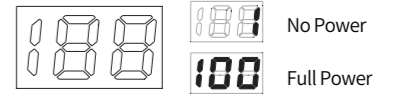
If earbuds has any connection or function problems, please reset the earbuds

1. Delete the BT pairing information on the phone.
  2. Take the earbuds into the charging case to charge.
  3. Take out the earbuds and wait for 20 seconds.
- (If the above operation does not work, please try again)**

## Operation



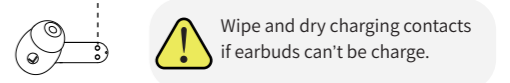
## Battery Indicator



## Indicator Light

Pairing	Connected	Charging
Flashing	No Light	Red

## Charging Contacts



Warning: Changes or modifications to this unit not expressly approved by the party responsible for compliance could void the user's authority to operate the equipment.

NOTE: This device complies with part 15 of the FCC Rules. Operation is subject to the following two conditions: (1) This device may not cause harmful interference, and (2) this device must accept any interference received, including interference that may cause undesired operation.

FCC Statement: This equipment has been tested and found to comply with the limits for a Class B digital device, pursuant to part 15 of the FCC Rules. These limits are designed to provide reasonable protection against harmful interference in a residential installation. This equipment generates, uses and can radiate radio frequency energy and, if not installed and used in accordance with the instructions, may cause harmful interference to radio communications. However, there is no guarantee that interference will not occur in a particular installation. If this equipment does cause harmful interference to radio or television reception, which can be determined by turning the equipment off and on, the user is encouraged to try to correct the interference by one or more of the following measures:

- Reorient or relocate the receiving antenna.
- Increase the separation between the equipment and receiver.
- Connect the equipment into an outlet on a circuit different from that to which the receiver is connected.
- Consult the dealer or an experienced radio/TV technician for help.