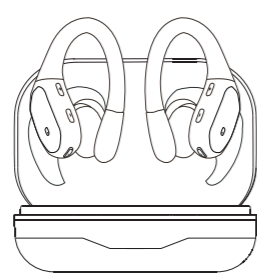


# Instruction Manual

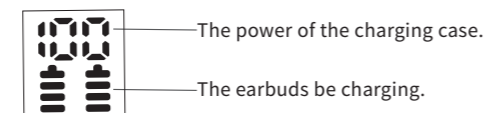
BX28



Please read the instructions before use

## Before Use

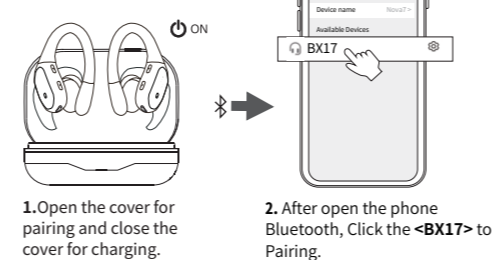
### 1. Battery Indicator.



### 2. Choose the right angle and eartips.



## Connect



## Reset

**If earbuds has any connection or function problems, please reset the earbuds**

1. Delete the BT pairing information on the phone.
2. Take the earbuds into the charging case to charge.
3. Take out the earbuds and wait for 20 seconds.

**(If the above operation does not work, please try again)**

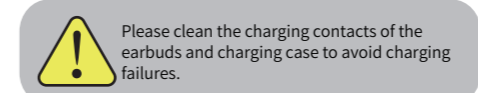
## Operation


X1: Click Once  
X2: Click 2 times  
0.2S: Press and hold for 2 seconds

## Problem handling

- ① **Can be connected but there is no sound:**  
Click the earbud volume key to increase the volume.
- ② **One of earbuds cannot be charge:**  
Clean the charging contact of the earbuds and the charging case.
- ③ **One of the earbuds cannot be connected:**  
Reset the earbuds.

**If the earbuds cannot be charged, please activate the warranty and contact us to send a new product.**



Warning: Changes or modifications to this unit not expressly approved by the party responsible for compliance could void the user's authority to operate the equipment.

NOTE: This device complies with part 15 of the FCC Rules. Operation is subject to the following two conditions: (1) This device may not cause harmful interference, and (2) this device must accept any interference received, including interference that may cause undesired operation.

FCC Statement: This equipment has been tested and found to comply with the limits for a Class B digital device, pursuant to part 15 of the FCC Rules. These limits are designed to provide reasonable protection against harmful interference in a residential installation. This equipment generates, uses and can radiate radio frequency energy and, if not installed and used in accordance with the instructions, may cause harmful interference to radio communications. However, there is no guarantee that interference will not occur in a particular installation. If the equipment does cause harmful interference to radio or television reception, which can be determined by turning the equipment off and on, the user is encouraged to try to correct the interference by one or more of the following measures:  
—Reorient or relocate the receiving antenna.  
—Increase the separation between the equipment and receiver.  
—Connect the equipment into an outlet on a circuit different from that to which the receiver is connected.  
—Consult the dealer or an experienced radio/TV technician for help.