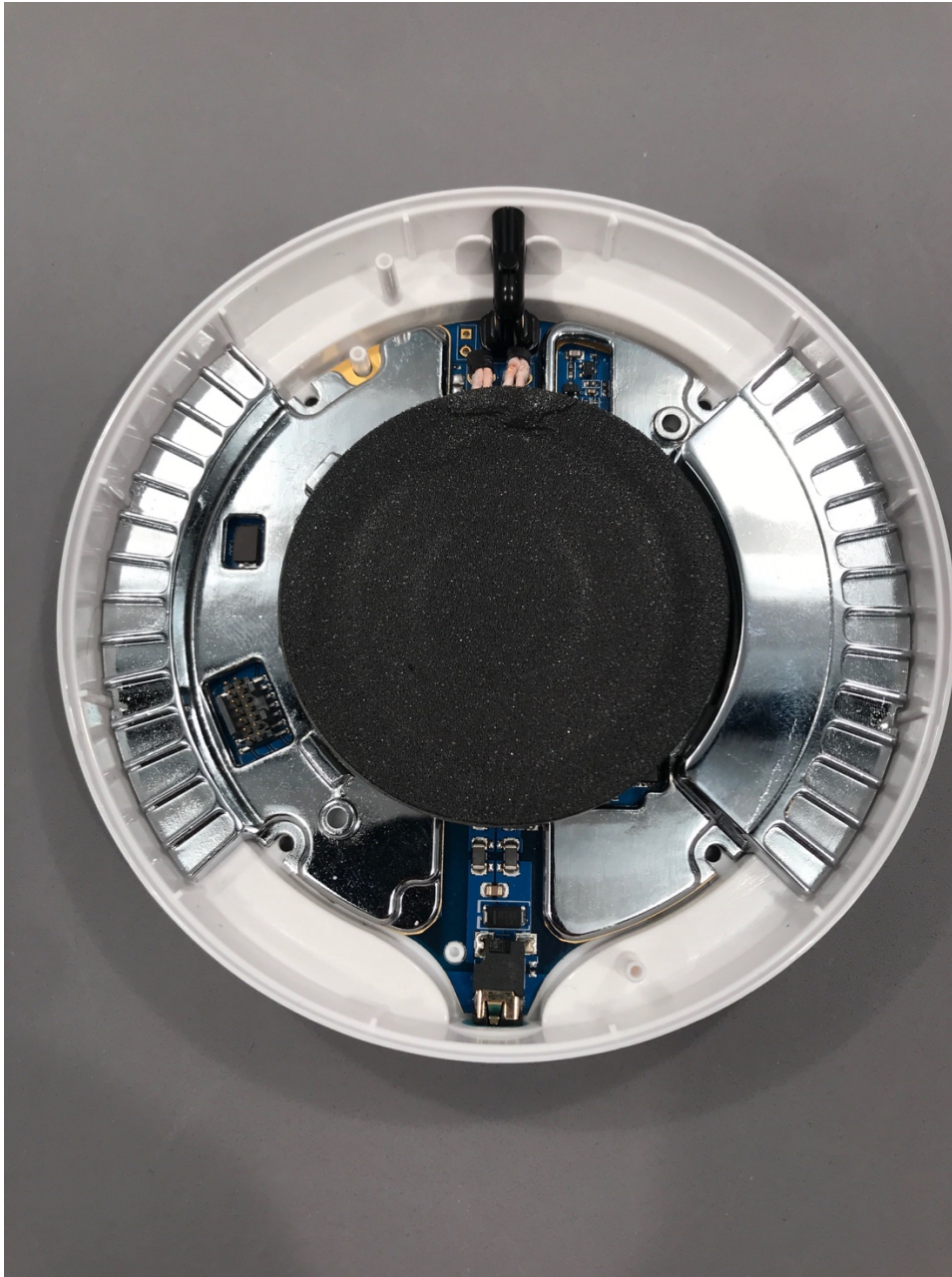
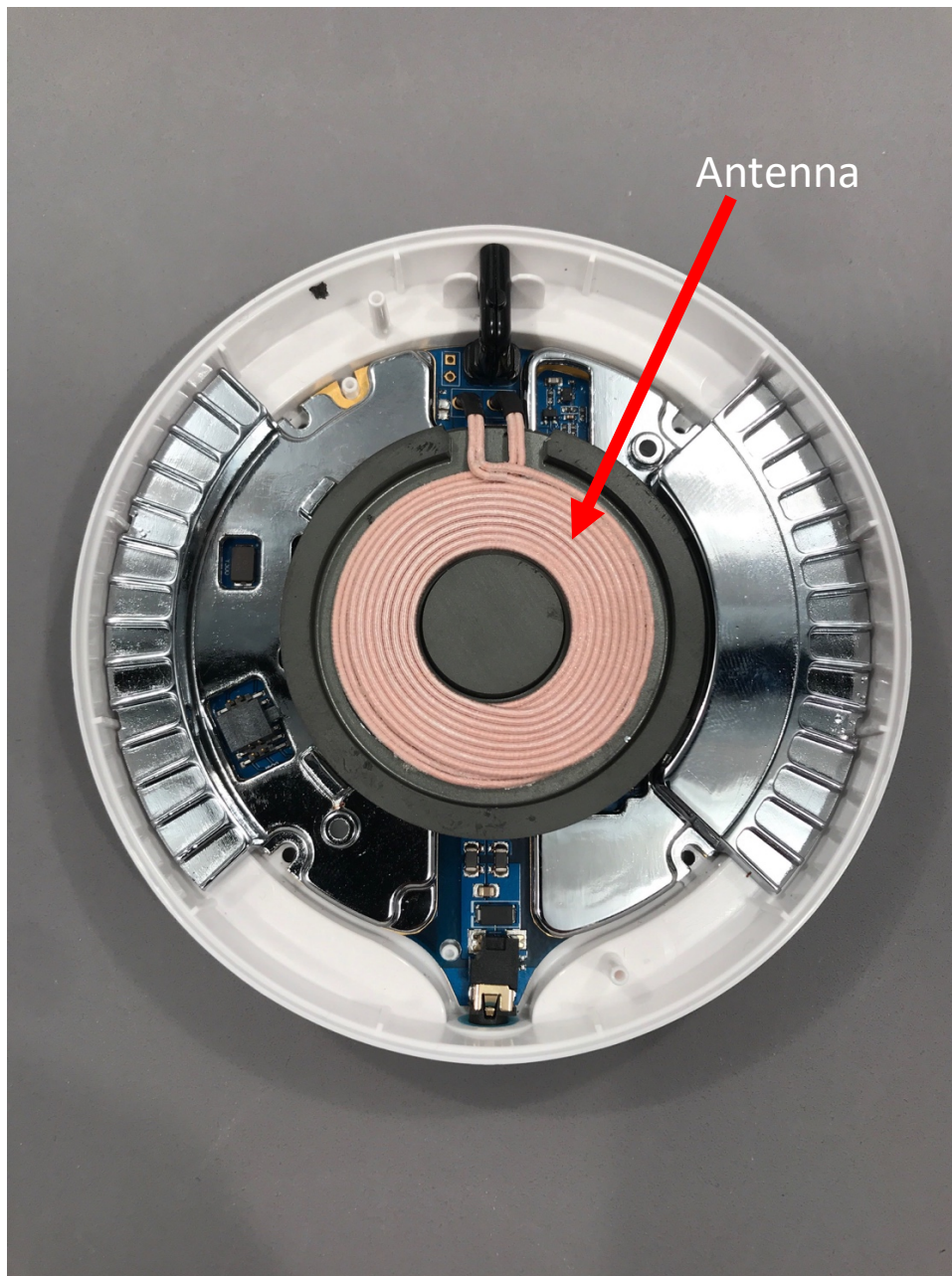


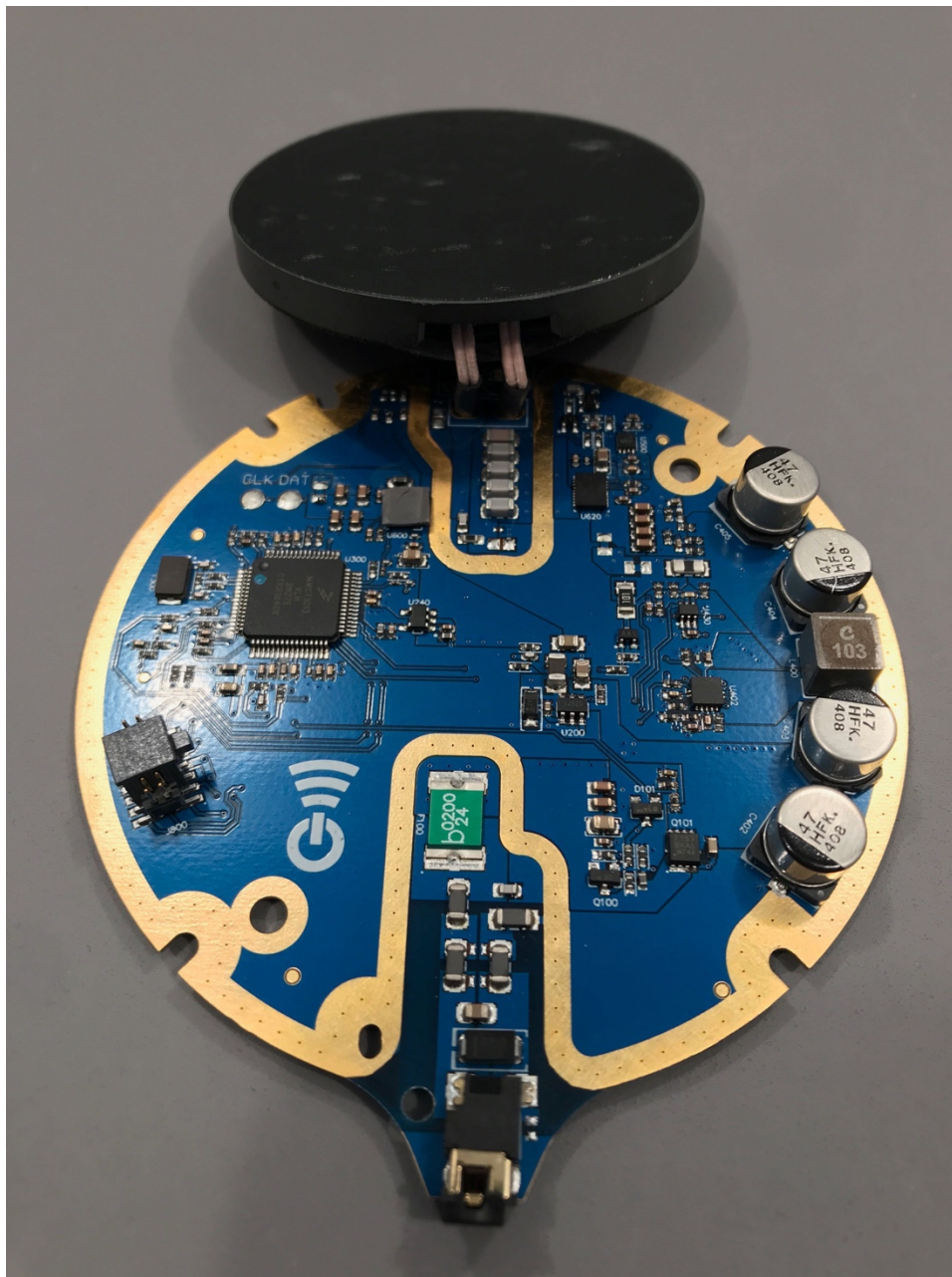
Top Cover Removed

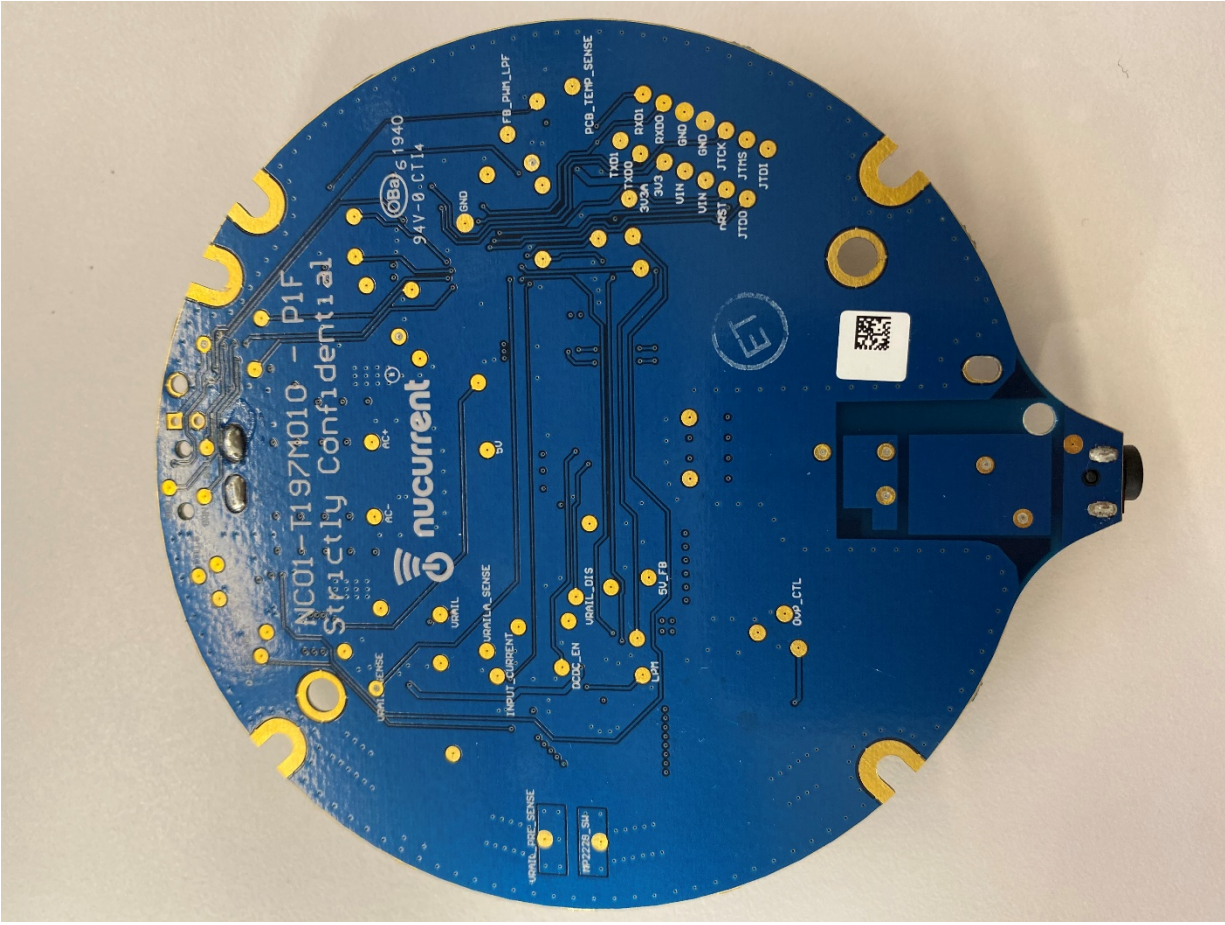


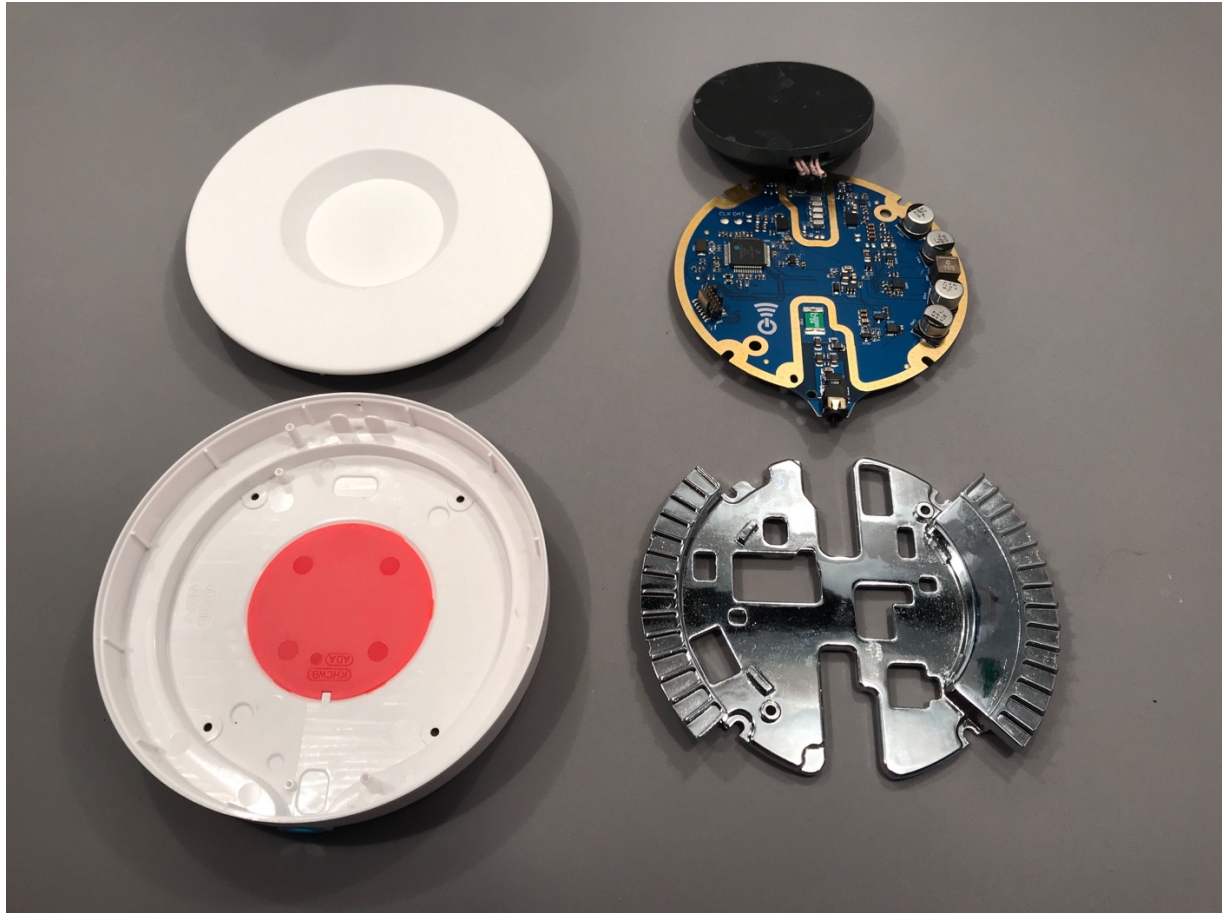
Coil foam removed to expose the antenna



A circular blue printed circuit board (PCB) with a gold-colored outer ring. The board is populated with various electronic components. At the top, a black circular antenna is mounted. The PCB features a central microcontroller chip, several capacitors (including electrolytic and ceramic types), and other smaller components like resistors and diodes. A green component labeled 'b2400' is visible near the bottom center. The board has a complex layout of gold-colored traces and pads. A black connector is located on the left side, and a small black component is at the bottom center. The overall design is compact and circular, typical of a wearable or portable electronic device.







Top Cover and Bottom Housing

