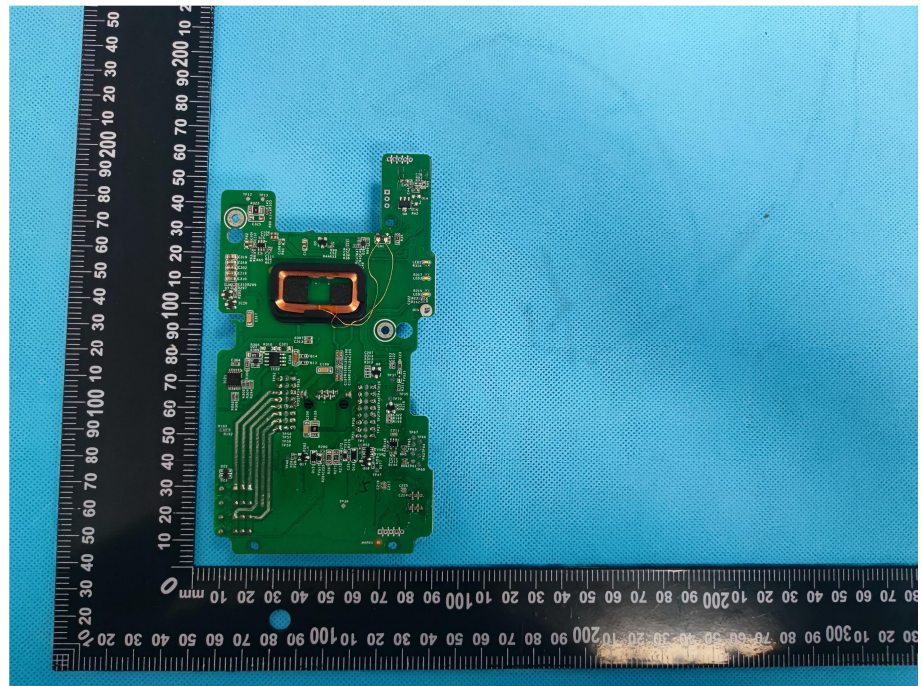
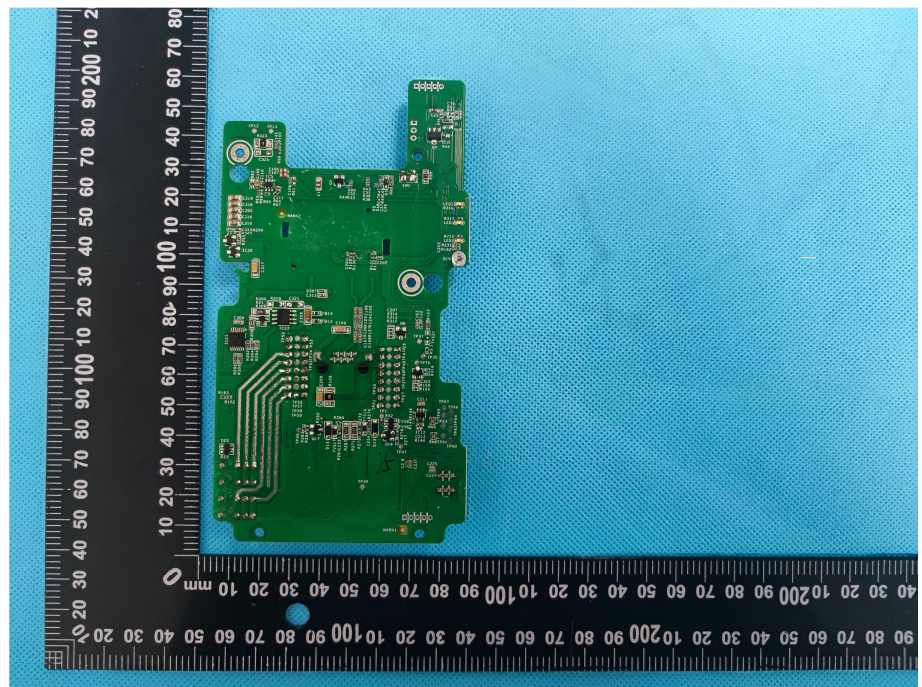
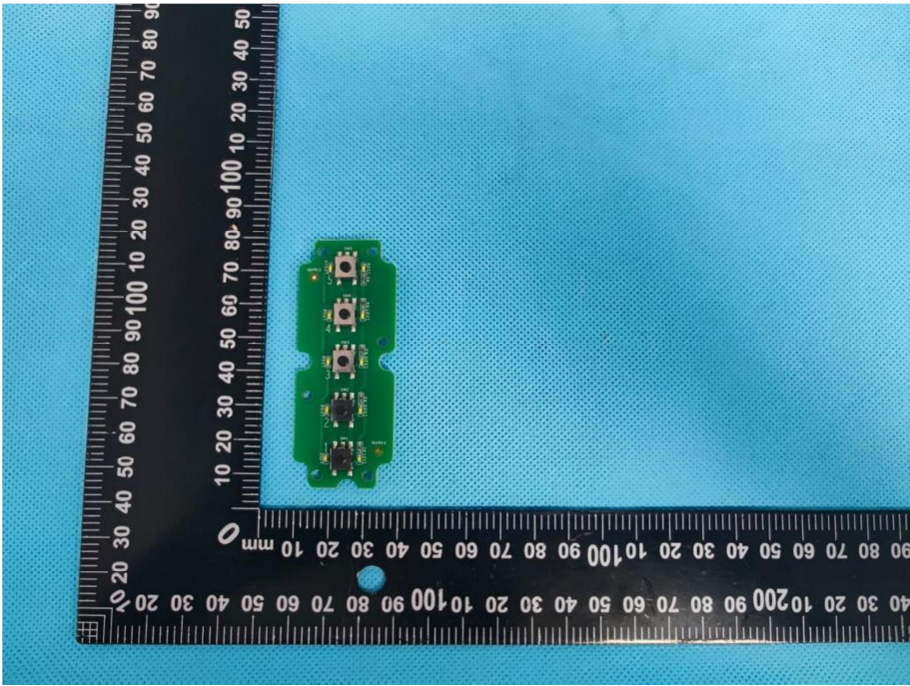
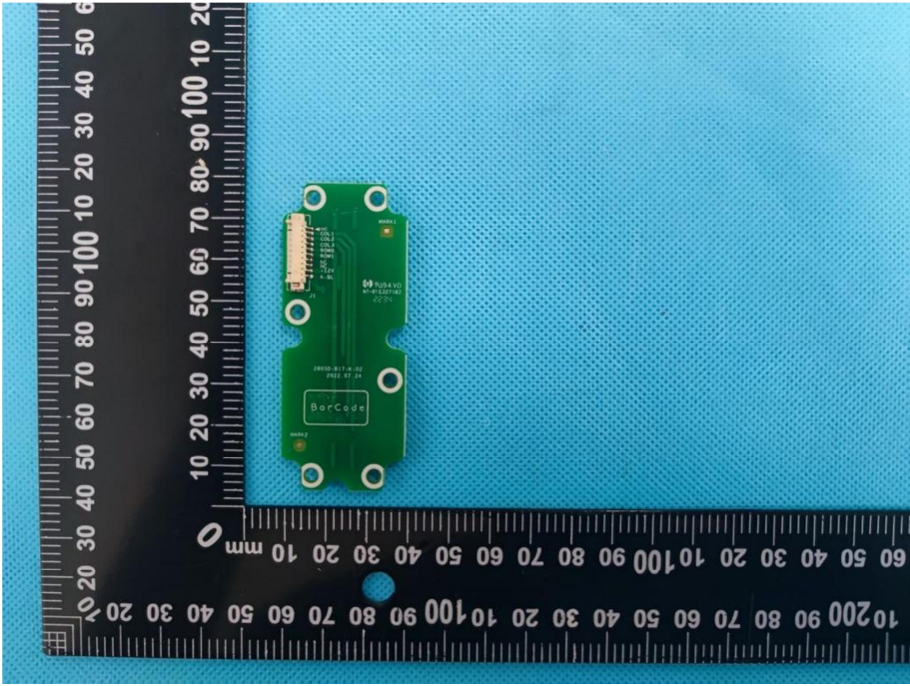


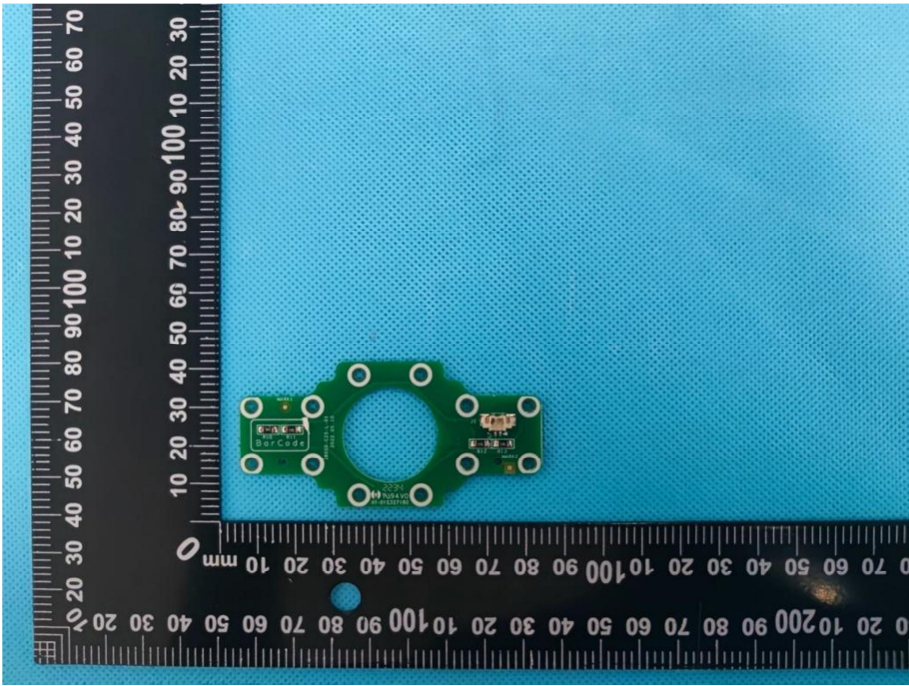
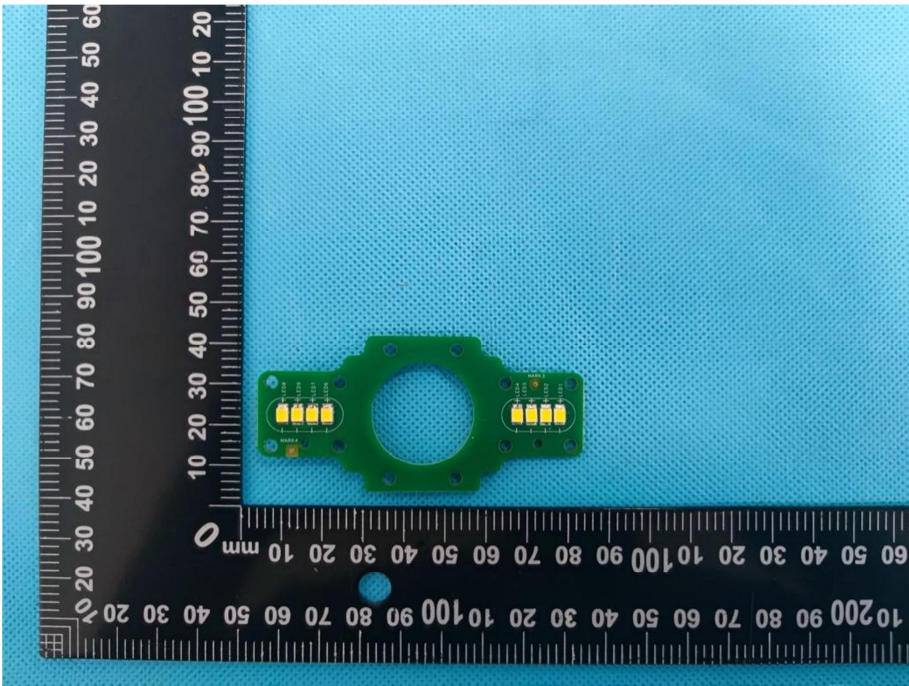
**Solder
Board-Component
View 6**

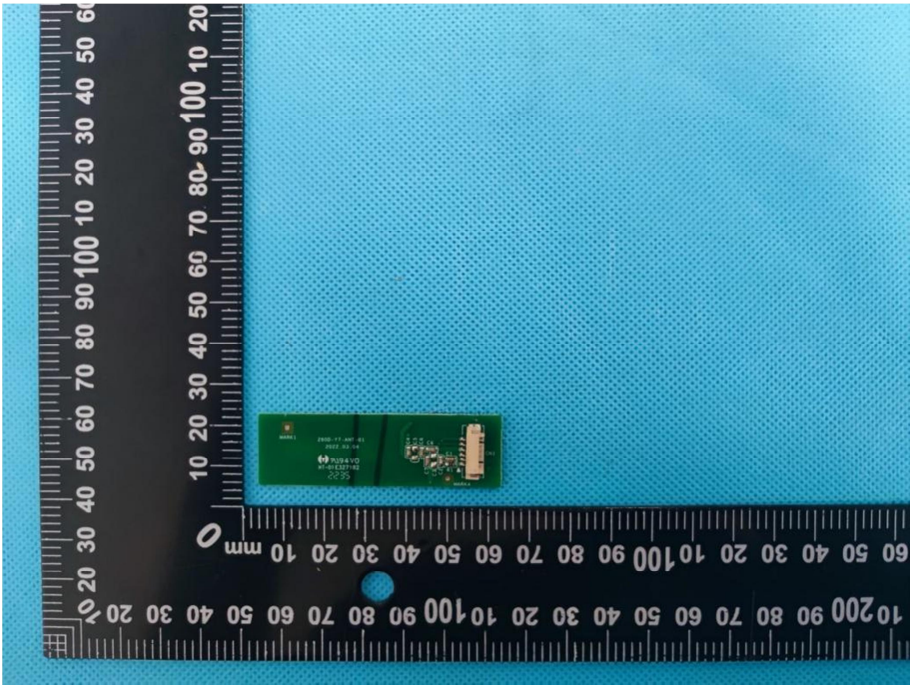
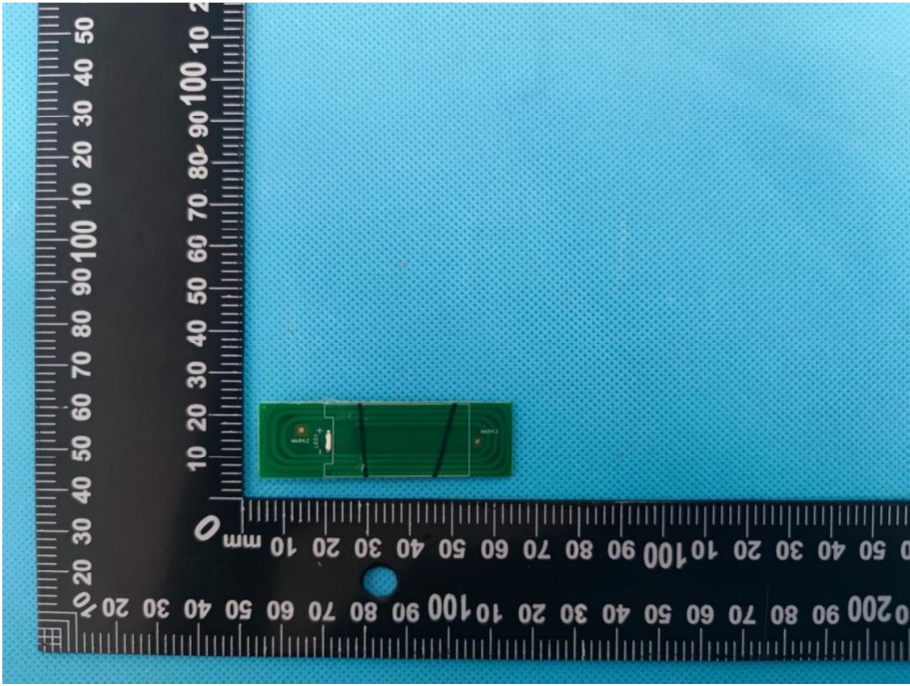


**Solder
Board-Component
View 7**



<p>Solder Board-Component View 8</p>	 <p>A photograph of a green printed circuit board (PCB) component, labeled 'View 8'. The component is rectangular and features three circular solder pads arranged vertically. It is placed on a blue textured surface next to a black L-shaped ruler for scale. The ruler shows measurements in millimeters, with the vertical scale ranging from 0 to 90 mm and the horizontal scale from 0 to 100 mm.</p>
<p>Solder Board-Component View 9</p>	 <p>A photograph of the same green PCB component, labeled 'View 9'. This view shows the component from a different angle, highlighting a white barcode label on its surface. The component also features a multi-pin connector on one side and four circular solder pads. It is positioned on a blue textured surface next to a black L-shaped ruler for scale, with the vertical scale from 0 to 60 mm and the horizontal scale from 0 to 100 mm.</p>

<p>Solder Board-Component View 10</p>	 <p>A photograph of a green PCB component with a central circular cutout and six circular pads. The component is placed on a blue textured surface next to a black ruler with white markings. The ruler shows dimensions in millimeters, with the component's width being approximately 60 mm and its height approximately 40 mm. The component has some text printed on it, including 'Solder Board-Component' and 'WALTEK TESTING GROUP (SHENZHEN) CO., LTD.'.</p>
<p>Solder Board-Component View 11</p>	 <p>A photograph of the same green PCB component from a different angle. It shows the component's profile and the solder joints on the pads. The component is placed on a blue textured surface next to a black ruler with white markings. The ruler shows dimensions in millimeters, with the component's width being approximately 60 mm and its height approximately 40 mm.</p>

<p>Solder Board-Component View 12</p>	 <p>A photograph of a small green printed circuit board (PCB) component, likely a solder mask or a small board, placed on a blue textured surface. The component is rectangular and features several small components and a connector. A black L-shaped ruler is positioned to the left and bottom of the component for scale. The ruler has markings in millimeters (0 to 100) and centimeters (0 to 10). The component is approximately 10 mm wide and 15 mm long.</p>
<p>Solder Board-Component View 13</p>	 <p>A photograph of the same small green PCB component as in View 12, but from a different perspective. The component is oriented horizontally. A black L-shaped ruler is positioned to the left and bottom of the component for scale. The ruler has markings in millimeters (0 to 100) and centimeters (0 to 10). The component is approximately 10 mm wide and 15 mm long.</p>