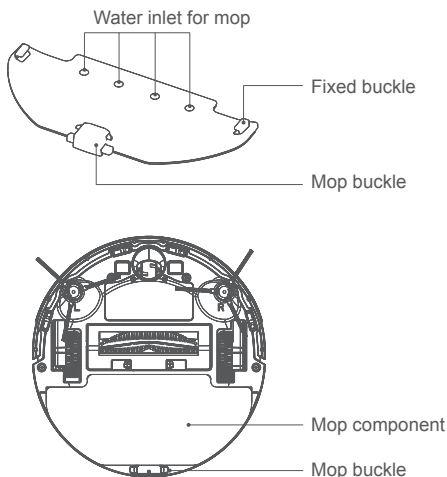


## ⏻ Product maintenance

### Water tank and mop component

1. If you need to use the mopping function of the robot vacuum cleaner, please open the machine cover to remove the dust box.
2. Take the water tank and mop component from the package.
3. Align the mop component with the buckle position on the body and install it by pushing horizontally.

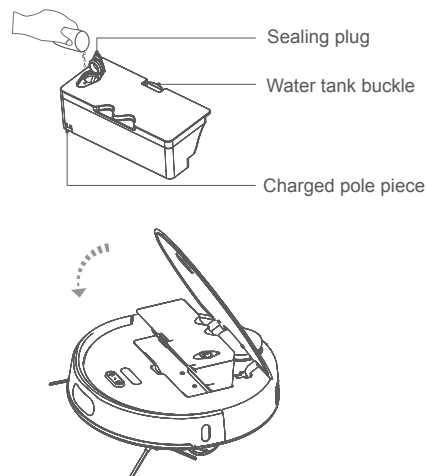


\*Press the buckle from both ends and pull out the mop component to remove it.

4. Open the sealing plug of the water tank to fill in the appropriate amount of water. After closing the sealing plug, install the water tank in the main machine (the position of the original dust box).

#### Note:

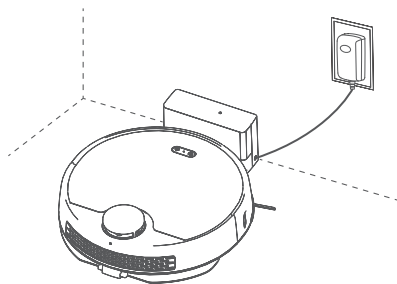
- \* Please remove the water tank for filling water, and do not fill it on the machine.
- \* Before installing the water tank and mop component, please dry the water and cut off the power.



## 🔌 Product maintenance

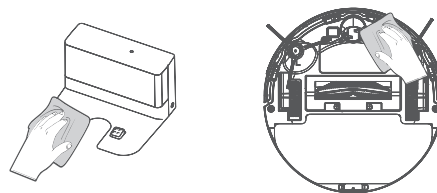
### Battery

1. The high-performance lithium-ion battery pack is built in the machine. And the battery has no memory effect and it is no need to worry about repeated charging/discharging.
2. In order to maintain the best performance, keep the machine charging on the charging stand if it does not work.
3. After the machine is fully charged, please turn it off if it does not work. Keep charging for a long time may damage the battery.
4. If it is not used for a long time, please cut off the power of the charging stand to turn it off and store. It is recommended to charge once a month to avoid damage of the battery due to over-discharge.



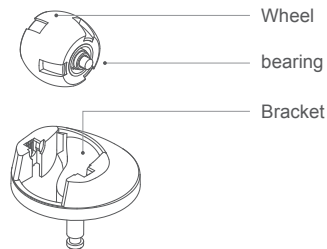
### Charging stand and charging electrode

1. Please wipe the charging stand and charging electrode with a soft dry cloth in the condition of disconnection of power.
2. Please wipe the charging stand and charging electrode regularly to avoid problem of charging of the machine on the charging stand.



### Universal wheel

1. Universal wheel.
2. Clean the hair and dust on the wheel and bearings.



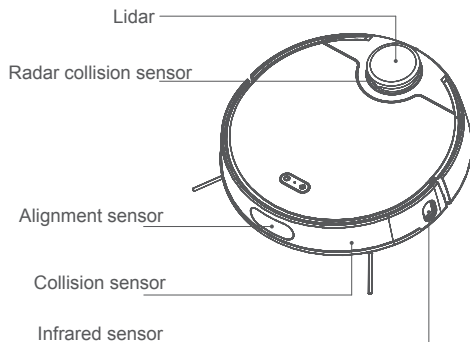
## 🔌 Product maintenance

### Sensor

Wipe the various sensors on the main machine with a soft and dry cloth to keep the sensor surface free of dirt and dust.

The sensors include the following:

1. Lidar
2. Infrared sensor
3. Anti-dropping sensor
4. Wall sensor
5. Radar collision sensor
6. Alignment sensor



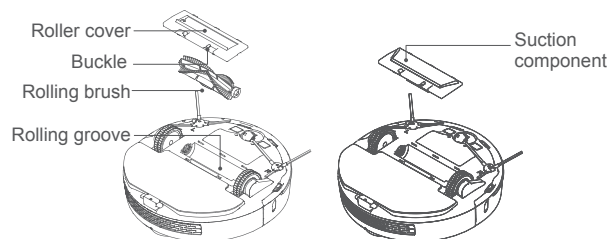
### Switching of the suction port component and rolling brush component

1. The default configuration of the machine is the rolling brush component, and the suction port component is the optional accessory.

2. Switching method:

\* Turn the machine, and press the buckle on the rolling brush cover to remove the rolling brush component.

\* Align the buckle of the suction port component with that on the machine to install.



### Firmware upgrade

You can check and upgrade the device firmware through the device settings page on APP. During updating, please make sure that the machine is charging and the power is not less than 60%. And please refer to the instruction in the APP for the update procedure.

## ⏻ Product parameters

### Parameters of main machine

ITEM	PARAMETERS
Dimensions	L346*W340*H99mm
Battery specification	Lithium battery, 3200mAH
Host weight	3.1±0.1KG
Connection method	WiFi connection
Rated voltage	14.4V
rated power	40W
Water tank capacity	450ml
Dust box capacity	350ml

### Parameters of charging stand

Item	Parameters
Dimension	L165*W142*H100mm
Rated input	100-240V 50/60Hz 0.8A
Rated output	24.0V/1.0A
rated power	50/60Hz

### The name and content of hazardous substances in the product

Component	Hazardous substances					
	Lead/pb	Hg	Cd	Cr (VI)	PBB	PBDE
Circuit board	○	○	○	○	○	○
Metal parts	○	○	○	○	○	○
Case	○	○	○	○	○	○
Battery	○	○	○	○	○	○
Other parts	○	○	○	○	○	○

The form is prepared in accordance with the provisions of SJ/T 11364.

○ indicates that the content of the hazardous substance in all homogeneous materials of the component is below the limit requirement specified in GB/T 26572.

X indicates that the content of the hazardous substance in at least one of the homogeneous materials of the component exceeds the limit requirement specified in GB/T26572.



## 🔊 Voice prompts and trouble-shooting

If the machine is faulty during operation, the power key quick flashes in red color. Please refer to the following voice prompts or APP prompt to solve the abnormal problem.

Sn.	Voice prompt	Cause	Trouble-shooting
1	Uh-oh, the dust box seems disappeared.	The cleaning is triggered during removing of the dust box.	Re-install the dust box or pause the cleaning task of the machine.
2	Uh-oh, the top radar seems to be blocked.	The top radar is covered or be placed in an open area	Please check and remove foreign objects around the Lidar or move it to other place to restart.
3	Master, I have to change the position to start	The device is picked up	Move the machine to other place to restart cleaning.
4	Master, please wipe the bottom anti-dropping sensor	The anti-dropping sensor is blocked or placed high	Please check and clean the anti-dropping sensor and try again.
5	Master, please wipe the front anti-collision sensor	Front wall detection sensor is abnormal	Please check and clean the anti-collision sensor and try again.
6	Master, please wipe the right side of the wall sensor	Wall sensor is abnormal	Please check and clean the wall sensor and try again.
7	Master, please wipe the top radar cover	The anti-collision sensor on radar cover is abnormal.	Please check and clean the foreign objects around the radar cover and try again.
8	Uh-oh, the front bumper is stuck.	The bumper or anti-collision sensor is stuck.	Please check if the bumper or anti-collision sensor is stuck.
9	Master, please clean the dust box filter	The dust box is full or the filter needs to be replaced.	Please clean the dust box or replace it with a new one.
10	I am trapped, please rescue me.	Machine is trapped.	Move the machine to other place to restart cleaning.
11	I'm skew, please put me right	The machine starts on the slope	Move the machine to a flat place to restart cleaning.

## 🔊 Voice prompts and trouble-shooting

Sn.	Voice prompt	Cause	Trouble-shooting
12	Uh-oh, the main wheel seems to be stuck, come to help me.	The main wheel is stuck or entangled.	Please check if the main wheel is entangled and clean it.
13	Uh-oh, the main brush seems to be stuck, come to help me.	The main brush is stuck or entangled.	Please check if the main brush is entangled and clean it.
14	Uh-oh, the side brush seems to be stuck, come to help me.	The side brush is stuck or entangled.	Please check if the side brush is entangled and clean it.
15	Recharge failed, please put me back to the charging stand.	No charging stand is found, or the charging stand is not connected with the power supply.	Please check if the charging stand is energized and clean the obstacles around the charging stand.
16	I am faulty, turn off and take a break.	A failure that requires a shutdown occurs and it automatically shuts down	Please try to restart the machine.
17	The machine can't be shut down on the charging stand.	The shutdown operation is triggered during the charging of the machine on the charging stand.	The machine cannot be turned off while charging, please avoid it.
18	Re-positioning failed, stop cleaning.	Positioning failed, stop cleaning.	Please make sure the machine is connected to the network properly and try to relocate.
19	Re-positioning failed, stop charging.	Positioning failed, stop charging.	Please make sure the machine is connected to the network properly and try to relocate.

## FAQ

Failure	Trouble-shooting
It cannot be turned on.	The battery is low, please charge it before use. The ambient temperature is over low or over high, please use it in the range of 0°C-40°C.
It cannot be charged.	The charging stand is not powered, please make sure the power is connected successfully. Poor contact of the charging electrode, please clean the charging stand electrode and the machine electrode.
The machine cannot be returned for charging.	Make sure there is enough space around the charging stand. And make sure that the recognition area on surface of the charging stand is free of dust and dirt.
The device cannot be found in the mobile.	Please reconnect WiFi and ensure that the network connection to the machine is successful.
The machine is offline.	Please ensure that the network connection of the machine is successful. And make sure the machine is always within the WiFi signal coverage.
The mobile and the device cannot be paired.	Make sure the machine and the charging stand are within the WiFi signal coverage and the signal is good. Please try resetting WiFi before pairing.
There is abnormal voice during cleaning.	Please check and clean the foreign matters on rolling brush, side brush, drive wheel and the universal wheel, and clean the machine chassis and anti-collision strip.
Cleaning is not effective.	Please check and clean the dust box and filter. Please replace the filter if it is blocked. Check and clean the rolling brush if it is entangled.
Timing cleaning doesn't work.	Timed cleaning cannot be triggered if the battery is low. Please confirm that the machine is connected to the network, otherwise, the timing cleaning task cannot be synchronized.
Whether it needs to be charged for 24 hours for the initial use.	The built-in high-performance lithium-ion battery has no memory effect, and it can be used after being fully charged and no need charging of 24 hours.
Whether the power of the charging stand is needed to be cut off after charging is completed.	In daily use, the standby power consumption is very low, so no need to power off and shut down, and maintaining the charging state is beneficial to the best performance of the battery. If it is not used for a long time, please cut off the power of the charging stand and shut it down for storage. It is recommended to charge once a month to avoid damage to the battery due to over-discharge.
Whether the laser emitted by the laser radar is harmful to the human.	The machine adopts advanced and safe laser radar, which meets the CLASS I laser standard and eye safety level.

## Safety information

### Service restrictions

01. The product is only for the cleaning of the floor in the home environment and do not use it outdoors (such as open balcony), non-ground (such as sofa, coffee table, etc.), commercial or industrial environment.
02. Do not use the product in a suspended environment (such as duplex floors, home tops, etc.) to avoid property damage and personal injury caused by falling of the device.
03. Do not use the product in an environment above 40 ° C or below -10 ° C.
04. Do not use the product in a ground environment with liquid or sticky materials.
05. Please clean up the debris or scattered objects and cables on the ground before use to avoid the machine being blocked or entangled during operation.
06. Please ensure that the items that are fragile, easy to fall, expensive or potentially dangerous are stored properly before use to avoid personal injury or property damage caused by the robot vacuum cleaner during operation.
07. The people with physical, mental or cognitive impairments, including children are not allowed to use or operate the product.
08. Please properly keep the product, charging stand and product accessories to prevent children from touching to avoid personal and property damage.
09. Do not allow children to use the robot vacuum cleaner as a toy. Keep the children and pets as far away as possible during its working and cleaning.
10. Do not place the hair, clothing, fingers, etc. of the human close to the suction port and operating parts of the product.
11. The products must not allowed to absorb any burning items such as cigarettes, matches, ash and other items that may cause fire.
12. The products must not allowed to absorb any items such as stones, waste paper, nails, broken glass, etc. that may block the product.
13. Do not move the machine by the lidar cover as the handle to avoid damage of the lidar.
14. Please clean and maintain the machine and the charging stand during shutdown or power off.
15. Please clean the charging stand and the product with a dry soft towel and do not wipe any part of the product with any damp cloth, detergent or liquid.
16. During the initial use of the product, please always observe the work of the robot vacuum cleaner to help deal with some possible problems, such as the wound cables, the uneven area and the area that may make the robot vacuum cleaner suspending or stuck. And these areas can be set in the APP once they are found to prevent the robot vacuum cleaner from entering these areas the next time during work.
17. Please use the product strictly in accordance with the product instruction, and any loss or damage caused by improper use shall be borne by the user.



## Safety information

### Battery and charging

01. Do not use any battery, charging stand or charger from third-party.
02. Please make sure that the voltage used is correct.
03. Do not disassemble, repair or modify the battery or the charging stand.
04. Do not place the charging stand and the main machine close to the heat source, such as heating radiators, induction cookers, ovens, etc.
05. Do not wipe anywhere of the product with a damp cloth or any liquid.
06. Do not discard used batteries at will and please give the professional recycling agency for treatment.
07. If the power cord is damaged or broken, please stop using it immediately, and contact us in time to select the proper channel to purchase the genuine power cord for replacement.
08. Please make sure that the main machine is turned off for transport and it is recommended to pack with the original box.
09. If the product is not used for a long time, please turn off the power after fully charged, turn off the main machine, store in a cool dry place, and charge it at least every 3 months to avoid damage to the battery.

### Laser safety information

Lidar of the product complies with the IEC 60825-1:2014 (Third Edition)

### Applied standard

GB4706.1-2005, GB4706.7-2014, GB4343.1-2009, GB17625.1-2012

### FCC Caution.

This device complies with part 15 of the FCC Rules. Operation is subject to the following two conditions: (1) This device may not cause harmful interference, and (2) this device must accept any interference received, including interference that may cause undesired operation.

Any Changes or modifications not expressly approved by the party responsible for compliance could void the user's authority to operate the equipment.

## FCC Caution.

This device complies with Part 15 of the FCC Rules. Operation is subject to the following two conditions:

- (1) this device may not cause harmful interference.
- (2) this device must accept any interference received, including interference that may cause undesired operation.

Any changes or modifications not expressly approved by the party responsible for compliance could void the user's authority to operate the equipment.

NOTE: This equipment has been tested and found to comply with the limits for a Class B digital device, pursuant to Part 15 of the FCC Rules. These limits are designed to provide reasonable protection against harmful interference in a residential installation. This equipment generates, uses and can radiate radio frequency energy and, if not installed and used in accordance with the instructions, may cause harmful interference to radio communications. However, there is no guarantee that interference will not occur in a particular installation.

- Reorient or relocate the receiving antenna.
- Increase the separation between the equipment and receiver.
- Connect the equipment into an outlet on a circuit different from that to which the receiver is connected.
- Consult the dealer or an experienced radio/TV technician for help.

## RF warning for Mobile device:

This equipment should be installed and operated with minimum distance 20cm between the radiator& your body.

DONGGUAN ZHIKE INTELLIGENT SCIENCE AND TECHNOLOGY CO., LTD.

Address: No. 1, First Juxin Road, Qiufu Road, Dalang Town, Dongguan

Website: [www.yhrobot.com](http://www.yhrobot.com)

Service hot line: 0769-33833999