

Simultaneous Multi-band Transmission Evaluation:
Application Simultaneous Transmission information:

| NO | Simultaneous state | Portable Handset | |
|----|---------------------------------|------------------|---------|
| | | Body-worn | Hotspot |
| 1 | GSM (Data) + WLAN 2.4GHz (data) | Yes | Yes |
| 2 | GSM (Data) + Bluetooth(data) | Yes | Yes |
| 3 | WCDMA+ WLAN 2.4GHz (data) | Yes | Yes |
| 4 | WCDMA+ Bluetooth(data) | Yes | Yes |
| 5 | LTE + WLAN 2.4GHz (data) | Yes | Yes |
| 6 | LTE + Bluetooth(data) | Yes | Yes |

NOTE:

1. WIFI and BT share the same antenna, and cannot transmit simultaneously.
2. Simultaneous with every transmitter must be the same test position.
3. KDB 447498 D01, BT SAR is excluded as below table.
4. KDB 447498 D01, for handsets the test separation distance is determined by the smallest distance between the outer surface of the device and the user; which is 5mm for body-worn SAR.
5. According to KDB 447498 D01 4.3.1, Standalone SAR test exclusion is as follow:
For 100 MHz to 6 GHz and test separation distances ≤ 50 mm, the 1-g and 10-g SAR test exclusion thresholds are determined by the following:

$$[(\text{max. power of channel, including tune-up tolerance, mW}) / (\text{min. test separation distance, mm})] \cdot [\sqrt{f(\text{GHz})}] \leq 3.0$$
for 1-g SAR, and ≤ 7.5 for 10-g extremity SAR³⁰, where
 - f(GHz) is the RF channel transmit frequency in GHz
 - Power and distance are rounded to the nearest mW and mm before calculation³¹
 - The result is rounded to one decimal place for comparison
 - The values 3.0 and 7.5 are referred to as numeric thresholds in step b) below
The test exclusions are applicable only when the minimum test separation distance is ≤ 50 mm, and for transmission frequencies between 100 MHz and 6 GHz. When the minimum test separation distance is < 5 mm, a distance of 5 mm according to 4.1 f) is applied to determine SAR test exclusion.
6. If the test separation distance is < 5 mm, 5mm is used for excluded SAR calculation.
7. According to KDB 447498 D01 4.3.2, simultaneous transmission SAR test exclusion is as follow:
 - (1) Simultaneous transmission SAR test exclusion is determined for each operating configuration and exposure condition according to the reported standalone SAR of each applicable simultaneous transmitting antenna.
 - (2) Any transmitters and antennas should be considered when calculating simultaneous mode.
 - (3) For mobile phone and PC, it's the sum of all transmitters and antennas at the same mode with same position in each applicable exposure condition
 - (4) When the standalone SAR test exclusion of section 4.3.2 is applied to an antenna that transmits simultaneously with other antennas, the standalone SAR must be estimated according to the following to det

$$[(\text{max. power of channel, including tune-up tolerance, mW}) / (\text{min. test separation distance, mm})] \cdot [\sqrt{f(\text{GHz})} / x] \text{ W/kg}$$
for test separation distances ≤ 50 mm;
where $x = 7.5$ for 1-g SAR, and $x = 18.75$ for 10-g SAR.



8. When the sum of SAR is larger than the limit, SAR test exclusion is determined by the SAR to peak location separation ratio. The simultaneous transmitting antennas in each operating mode and exposure condition combination must be considered one pair at a time to determine the SAR to peak location separation ratio to qualify for test exclusion. The ratio is determined by $(SAR1 + SAR2)1.5/R_i$, rounded to two decimal digits, and must be ≤ 0.04 for all antenna pairs in the configuration to qualify for 1-g SAR test exclusion.

| Estimated SAR | | Max Power including Tune-up Tolerance | | Separation Distance (mm) | Estimated SAR (W/kg) |
|---------------|------|---------------------------------------|-------|--------------------------|----------------------|
| | | dBm | mW | | |
| BT | Body | 2 | 1.585 | 5 | 0.067 |



Attestation of Global Compliance(Shenzhen)Co.,Ltd.

Add: 2/F., Building 2, No.1-4, Chaxi Sanwei Technial Industrial Park, Gushu, Xixiang, Bao'an District, Shenzhen, Guangdong, China

Tel: +86-755 2523 4088

E-mail: agc@agc-cert.com

Service Hotline:400 089 2118

Sum of the SAR for GSM 850 & Wi-Fi & BT:

| RF Exposure Conditions | Test Position | Simultaneous Transmission Scenario | | | Σ1-g SAR (W/Kg) | SPLSR (Yes/No) |
|------------------------|---------------|------------------------------------|----------------|-----------|-----------------|----------------|
| | | GSM 850 | Wi-Fi DTS Band | Bluetooth | | |
| Body-worn (Data) | Rear | 0.633 | | 0.067 | 0.700 | No |
| | | 0.633 | 0.079 | | 0.712 | No |
| | Front | 0.440 | | 0.067 | 0.507 | No |
| | | 0.440 | 0.041 | | 0.481 | No |
| Body-worn (Hotspot) | Edge 4 | 0.453 | 0.039 | | 0.492 | No |
| | Edge 4 | 0.453 | | 0.067 | 0.520 | No |

Note:

- According to KDB 447498 D01 General RF Exposure Guidance, when the simultaneous transmission SAR is less than 1.6 W/Kg, SPLSR assessment is not required.
- SPLSR mean is "The SAR to Peak Location Separation Ratio "

Sum of the SAR for GSM 1900 & Wi-Fi & BT:

| RF Exposure Conditions | Test Position | Simultaneous Transmission Scenario | | | Σ1-g SAR (W/Kg) | SPLSR (Yes/No) |
|------------------------|---------------|------------------------------------|----------------|-----------|-----------------|----------------|
| | | PCS 1900 | Wi-Fi DTS Band | Bluetooth | | |
| Body-worn (Data) | Rear | 1.423 | | 0.067 | 1.490 | No |
| | | 1.423 | 0.079 | | 1.502 | No |
| | Front | 0.919 | | 0.067 | 0.986 | No |
| | | 0.919 | 0.041 | | 0.960 | No |
| Body-worn (Hotspot) | Edge 4 | 0.605 | 0.039 | | 0.644 | No |
| | Edge 4 | 0.605 | | 0.067 | 0.672 | No |

Note:

- According to KDB 447498 D01 General RF Exposure Guidance, when the simultaneous transmission SAR is less than 1.6 W/Kg, SPLSR assessment is not required.
- SPLSR mean is "The SAR to Peak Location Separation Ratio "



Attestation of Global Compliance(Shenzhen)Co.,Ltd.

Add: 2/F., Building 2, No.1-4, Chaxi Sanwei Technial Industrial Park, Gushu, Xixiang, Bao'an District, Shenzhen, Guangdong, China

Tel: +86-755 2523 4088 E-mail: agc@agc-cert.com Service Hotline:400 089 2118

Sum of the SAR for WCDMA Band II & Wi-Fi & BT:

| RF Exposure Conditions | Test Position | Simultaneous Transmission Scenario | | | Σ1-g SAR (W/Kg) | SPLSR (Yes/No) |
|------------------------|---------------|------------------------------------|----------------|-----------|-----------------|----------------|
| | | WCDMA Band II | Wi-Fi DTS Band | Bluetooth | | |
| Body-worn | Rear | 1.489 | 0.079 | | 1.568 | No |
| | Front | 0.506 | 0.041 | | 0.547 | No |
| | Edge 4 | 0.446 | 0.039 | | 0.485 | No |
| | Rear | 1.489 | | 0.067 | 1.556 | No |
| | Front | 0.506 | | 0.067 | 0.573 | No |
| | Edge 4 | 0.446 | | 0.067 | 0.513 | No |

Note:

- According to KDB 447498 D01 General RF Exposure Guidance, when the simultaneous transmission SAR is less than 1.6 W/Kg, SPLSR assessment is not required.
- SPLSR mean is "The SAR to Peak Location Separation Ratio "

Sum of the SAR for WCDMA Band V & Wi-Fi & BT:

| RF Exposure Conditions | Test Position | Simultaneous Transmission Scenario | | | Σ1-g SAR (W/Kg) | SPLSR (Yes/No) |
|------------------------|---------------|------------------------------------|----------------|-----------|-----------------|----------------|
| | | WCDMA Band V | Wi-Fi DTS Band | Bluetooth | | |
| Body-worn | Rear | 0.477 | 0.079 | | 0.556 | No |
| | Front | 0.419 | 0.041 | | 0.460 | No |
| | Edge 4 | 0.423 | 0.039 | | 0.462 | No |
| | Rear | 0.477 | | 0.067 | 0.544 | No |
| | Front | 0.419 | | 0.067 | 0.486 | No |
| | Edge 4 | 0.423 | | 0.067 | 0.490 | No |

Note:

- According to KDB 447498 D01 General RF Exposure Guidance, when the simultaneous transmission SAR is less than 1.6 W/Kg, SPLSR assessment is not required.
- SPLSR mean is "The SAR to Peak Location Separation Ratio "



Attestation of Global Compliance(Shenzhen)Co.,Ltd.

Add: 2/F., Building 2, No.1-4, Chaxi Sanwei Technial Industrial Park, Gushu, Xixiang, Bao'an District, Shenzhen, Guangdong, China

Tel: +86-755 2523 4088

E-mail: agc@agc-cert.com

Service Hotline:400 089 2118

Sum of the SAR for LTE Band 2 & Wi-Fi & BT:

| RF Exposure Conditions | Test Position | Simultaneous Transmission Scenario | | | Σ1-g SAR (W/Kg) | SPLSR (Yes/No) |
|------------------------|---------------|------------------------------------|----------------|-----------|-----------------|----------------|
| | | LTE Band 2 | Wi-Fi DTS Band | Bluetooth | | |
| Body-worn | Rear | 1.492 | 0.079 | | 1.571 | No |
| | Front | 0.935 | 0.041 | | 0.976 | No |
| | Edge 4 | 0.518 | 0.039 | | 0.557 | No |
| | Rear | 1.492 | | 0.067 | 1.559 | No |
| | Front | 0.935 | | 0.067 | 1.002 | No |
| | Edge 4 | 0.518 | | 0.067 | 0.585 | No |

Note:

- According to KDB 447498 D01 General RF Exposure Guidance, when the simultaneous transmission SAR is less than 1.6 W/Kg, SPLSR assessment is not required.
- SPLSR mean is "The SAR to Peak Location Separation Ratio "

Sum of the SAR for LTE Band 5 & Wi-Fi & BT:

| RF Exposure Conditions | Test Position | Simultaneous Transmission Scenario | | | Σ1-g SAR (W/Kg) | SPLSR (Yes/No) |
|------------------------|---------------|------------------------------------|----------------|-----------|-----------------|----------------|
| | | LTE Band 5 | Wi-Fi DTS Band | Bluetooth | | |
| Body-worn | Rear | 0.626 | 0.079 | | 0.705 | No |
| | Front | 0.483 | 0.041 | | 0.524 | No |
| | Edge 4 | 0.573 | 0.039 | | 0.612 | No |
| | Rear | 0.626 | | 0.067 | 0.693 | No |
| | Front | 0.483 | | 0.067 | 0.550 | No |
| | Edge 4 | 0.573 | | 0.067 | 0.640 | No |

Note:

- According to KDB 447498 D01 General RF Exposure Guidance, when the simultaneous transmission SAR is less than 1.6 W/Kg, SPLSR assessment is not required.
- SPLSR mean is "The SAR to Peak Location Separation Ratio "



Attestation of Global Compliance(Shenzhen)Co.,Ltd.

Add: 2/F., Building 2, No.1-4, Chaxi Sanwei Technical Industrial Park, Gushu, Xixiang, Bao'an District, Shenzhen, Guangdong, China

Tel: +86-755 2523 4088 E-mail: agc@agc-cert.com Service Hotline:400 089 2118

Sum of the SAR for LTE Band 7 & Wi-Fi & BT:

| RF Exposure Conditions | Test Position | Simultaneous Transmission Scenario | | | Σ1-g SAR (W/Kg) | SPLSR (Yes/No) |
|------------------------|---------------|------------------------------------|----------------|-----------|-----------------|----------------|
| | | LTE Band 7 | Wi-Fi DTS Band | Bluetooth | | |
| Body-worn | Rear | 1.392 | 0.079 | | 1.471 | No |
| | Front | 0.018 | 0.041 | | 0.059 | No |
| | Edge 4 | 0.077 | 0.039 | | 0.116 | No |
| | Rear | 1.392 | | 0.067 | 1.459 | No |
| | Front | 0.018 | | 0.067 | 0.085 | No |
| | Edge 4 | 0.077 | | 0.067 | 0.144 | No |

Note:

- According to KDB 447498 D01 General RF Exposure Guidance, when the simultaneous transmission SAR is less than 1.6 W/Kg, SPLSR assessment is not required.
- SPLSR mean is "The SAR to Peak Location Separation Ratio "

Sum of the SAR for LTE Band 12 & Wi-Fi & BT:

| RF Exposure Conditions | Test Position | Simultaneous Transmission Scenario | | | Σ1-g SAR (W/Kg) | SPLSR (Yes/No) |
|------------------------|---------------|------------------------------------|----------------|-----------|-----------------|----------------|
| | | LTE Band 12 | Wi-Fi DTS Band | Bluetooth | | |
| Body-worn | Rear | 0.186 | 0.079 | | 0.265 | No |
| | Front | 0.015 | 0.041 | | 0.056 | No |
| | Edge 4 | 0.017 | 0.039 | | 0.056 | No |
| | Rear | 0.186 | | 0.067 | 0.253 | No |
| | Front | 0.015 | | 0.067 | 0.082 | No |
| | Edge 4 | 0.017 | | 0.067 | 0.084 | No |

Note:

- According to KDB 447498 D01 General RF Exposure Guidance, when the simultaneous transmission SAR is less than 1.6 W/Kg, SPLSR assessment is not required.
- SPLSR mean is "The SAR to Peak Location Separation Ratio "



Sum of the SAR for LTE Band 17 & Wi-Fi & BT:

| RF Exposure Conditions | Test Position | Simultaneous Transmission Scenario | | | Σ1-g SAR (W/Kg) | SPLSR (Yes/No) |
|------------------------|---------------|------------------------------------|----------------|-----------|-----------------|----------------|
| | | LTE Band 17 | Wi-Fi DTS Band | Bluetooth | | |
| Body-worn | Rear | 0.621 | 0.079 | | 0.700 | No |
| | Front | 0.354 | 0.041 | | 0.395 | No |
| | Edge 4 | 0.448 | 0.039 | | 0.487 | No |
| | Rear | 0.621 | | 0.067 | 0.688 | No |
| | Front | 0.354 | | 0.067 | 0.421 | No |
| | Edge 4 | 0.448 | | 0.067 | 0.515 | No |

Note:

- According to KDB 447498 D01 General RF Exposure Guidance, when the simultaneous transmission SAR is less than 1.6 W/Kg, SPLSR assessment is not required.
- SPLSR mean is "The SAR to Peak Location Separation Ratio "

Sum of the SAR for LTE Band 40 & Wi-Fi & BT:

| RF Exposure Conditions | Test Position | Simultaneous Transmission Scenario | | | Σ1-g SAR (W/Kg) | SPLSR (Yes/No) |
|------------------------|---------------|------------------------------------|----------------|-----------|-----------------|----------------|
| | | LTE Band 40 | Wi-Fi DTS Band | Bluetooth | | |
| Body-worn | Rear | 0.179 | 0.079 | | 0.258 | No |
| | Front | 0.014 | 0.041 | | 0.055 | No |
| | Edge 4 | 0.016 | 0.039 | | 0.055 | No |
| | Rear | 0.179 | | 0.067 | 0.246 | No |
| | Front | 0.014 | | 0.067 | 0.081 | No |
| | Edge 4 | 0.016 | | 0.067 | 0.083 | No |

Note:

- According to KDB 447498 D01 General RF Exposure Guidance, when the simultaneous transmission SAR is less than 1.6 W/Kg, SPLSR assessment is not required.
- SPLSR mean is "The SAR to Peak Location Separation Ratio "



Attestation of Global Compliance(Shenzhen)Co.,Ltd.

Add: 2/F., Building 2, No.1-4, Chaxi Sanwei Technical Industrial Park, Gushu, Xixiang, Bao'an District, Shenzhen, Guangdong, China

Tel: +86-755 2523 4088 E-mail: agc@agc-cert.com Service Hotline:400 089 2118

Sum of the SAR for LTE Band 41 & Wi-Fi & BT:

| RF Exposure Conditions | Test Position | Simultaneous Transmission Scenario | | | Σ1-g SAR (W/Kg) | SPLSR (Yes/No) |
|------------------------|---------------|------------------------------------|----------------|-----------|-----------------|----------------|
| | | LTE Band 41 | Wi-Fi DTS Band | Bluetooth | | |
| Body-worn | Rear | 1.497 | 0.079 | | 1.576 | No |
| | Front | 0.035 | 0.041 | | 0.076 | No |
| | Edge 4 | 0.119 | 0.039 | | 0.158 | No |
| | Rear | 1.497 | | 0.067 | 1.564 | No |
| | Front | 0.035 | | 0.067 | 0.102 | No |
| | Edge 4 | 0.119 | | 0.067 | 0.186 | No |

Note:

- According to KDB 447498 D01 General RF Exposure Guidance, when the simultaneous transmission SAR is less than 1.6 W/Kg, SPLSR assessment is not required.
- SPLSR mean is “The SAR to Peak Location Separation Ratio “



Attestation of Global Compliance(Shenzhen)Co.,Ltd.

Add: 2/F., Building 2, No.1-4, Chaxi Sanwei Technial Industrial Park, Gushu, Xixiang, Bao'an District, Shenzhen, Guangdong, China

Tel: +86-755 2523 4088

E-mail: agc@agc-cert.com

Service Hotline:400 089 2118

APPENDIX A. SAR SYSTEM CHECK DATA

Test Laboratory: AGC Lab

Date: July 16,2019

System Check Body 750 MHz

DUT: Dipole 750 MHz Type: SID 750

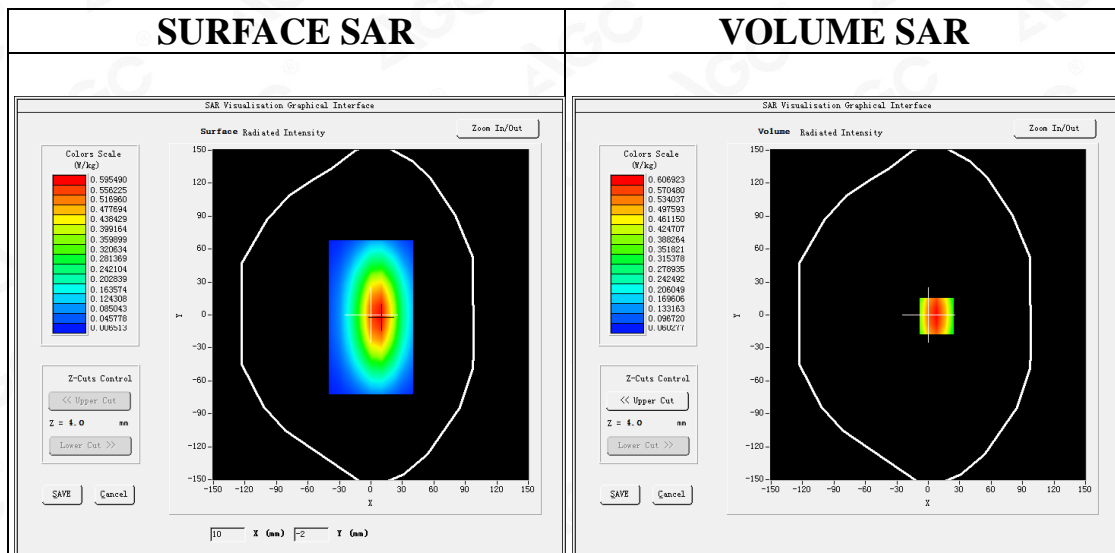
Communication System CW; Communication System Band: D750 (750.0 MHz); Duty Cycle: 1:1; Conv.F=5.40
Frequency: 750 MHz; Medium parameters used: $f = 750$ MHz; $\sigma = 0.96$ mho/m; $\epsilon_r = 55.36$; $\rho = 1000$ kg/m³ ;
Phantom section: Flat Section; Input Power=18dBm
Ambient temperature (°C):20.9, Liquid temperature (°C): 20.7

SATIMO Configuration:

- Probe: SSE5; Calibrated: Aug. 08,2018; Serial No.: SN 22/12 EP159
- Sensor-Surface: 4mm (Mechanical Surface Detection)
- Phantom: SAM twin phantom
- Measurement SW: OpenSAR V4_02_35

Configuration/System Check 750MHz Body/Area Scan: Measurement grid: dx=8mm, dy=8mm

Configuration/System Check 750MHz Body/Zoom Scan: Measurement grid: dx=8mm,dy=8mm, dz=5mm



Maximum location: X=8.00, Y=-1.00

SAR Peak: 0.84 W/kg

| | |
|----------------|----------|
| SAR 10g (W/Kg) | 0.376481 |
| SAR 1g (W/Kg) | 0.583909 |



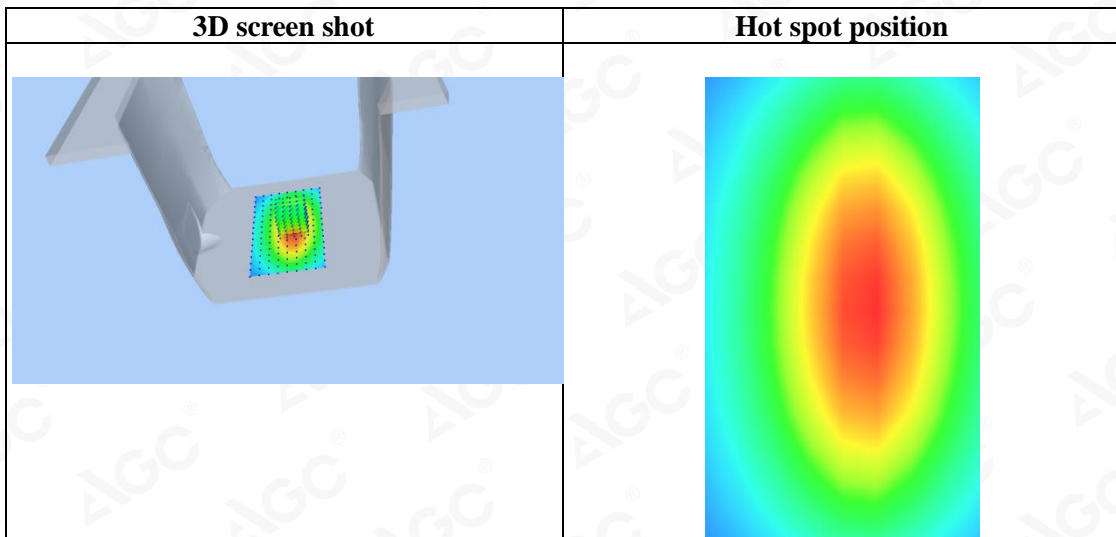
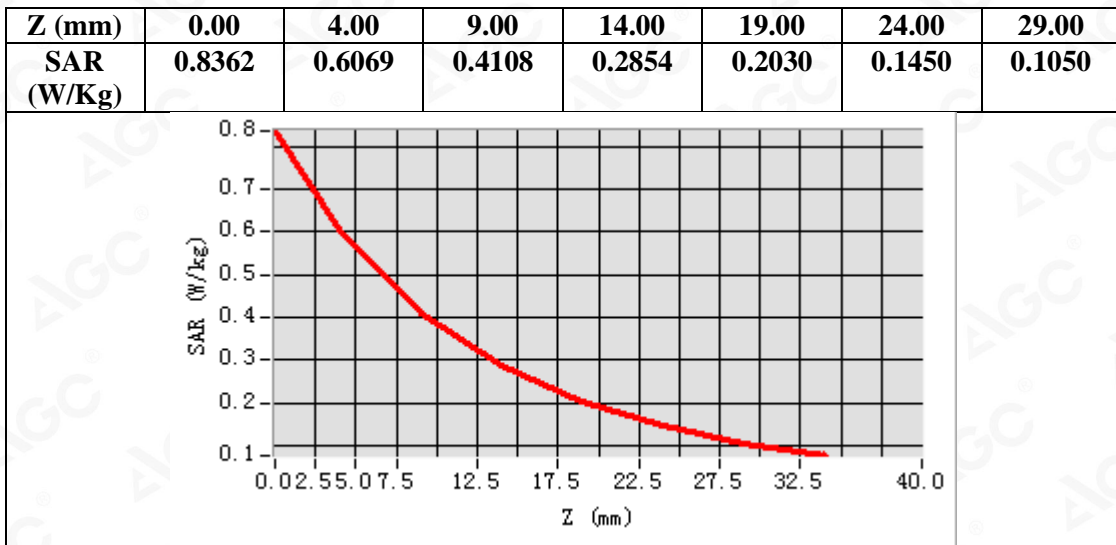
Attestation of Global Compliance(Shenzhen)Co.,Ltd.

Add: 2/F., Building 2, No.1-4, Chaxi Sanwei Technial Industrial Park, Gushu,
Xixiang, Bao'an District, Shenzhen, Guangdong, China

Tel: +86-755 2523 4088

E-mail: agc@agc-cert.com

Service Hotline:400 089 2118



Attestation of Global Compliance(Shenzhen)Co.,Ltd.

Add: 2/F., Building 2, No.1-4, Chaxi Sanwei Technial Industrial Park, Gushu,
Xixiang, Bao'an District, Shenzhen, Guangdong, China

Tel: +86-755 2523 4088

E-mail: agc@agc-cert.com

Service Hotline:400 089 2118

Test Laboratory: AGC Lab
System Check Body 835 MHz
DUT: Dipole 835 MHz Type: SID 835

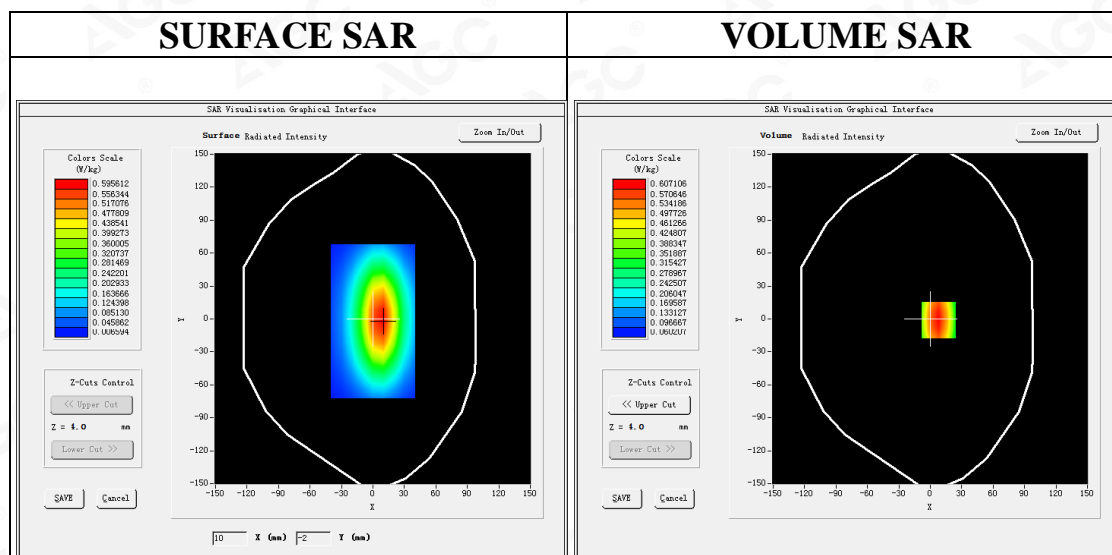
Date: July 17,2019

Communication System CW; Communication System Band: D835 (835.0 MHz); Duty Cycle: 1:1; Conv.F=5.49
Frequency: 835 MHz; Medium parameters used: $f = 835 \text{ MHz}$; $\sigma = 0.96 \text{ mho/m}$; $\epsilon_r = 54.56$; $\rho = 1000 \text{ kg/m}^3$;
Phantom section: Flat Section; Input Power=18dBm
Ambient temperature ($^{\circ}\text{C}$):21.8, Liquid temperature ($^{\circ}\text{C}$): 21.6

SATIMO Configuration:

- Probe: SSE5; Calibrated: Aug. 08,2018; Serial No.: SN 22/12 EP159
- Sensor-Surface: 4mm (Mechanical Surface Detection)
- Phantom: SAM twin phantom
- Measurement SW: OpenSAR V4_02_35

Configuration/System Check 835MHz Body/Area Scan: Measurement grid: dx=8mm, dy=8mm
Configuration/System Check 835MHz Body/Zoom Scan: Measurement grid: dx=8mm,dy=8mm, dz=5mm



Maximum location: X=8.00, Y=-1.00

SAR Peak: 0.84 W/kg

| | |
|-----------------------|----------|
| SAR 10g (W/Kg) | 0.409415 |
| SAR 1g (W/Kg) | 0.612116 |



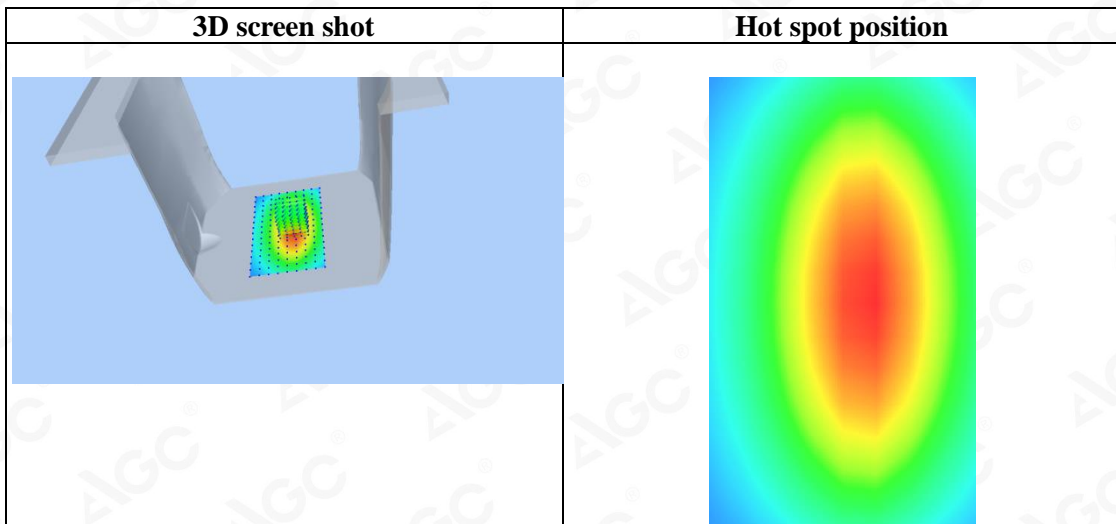
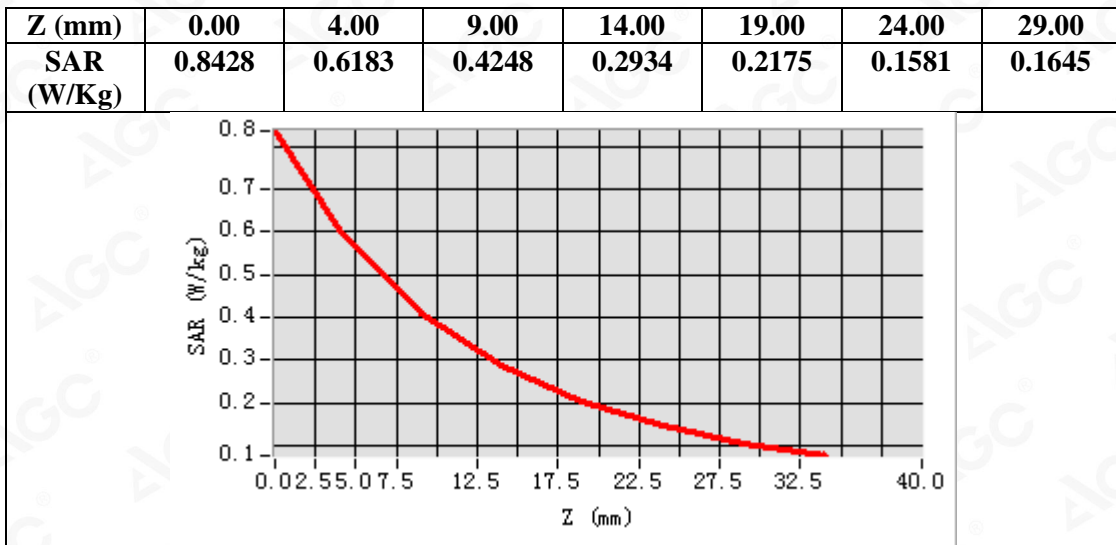
Attestation of Global Compliance(Shenzhen)Co.,Ltd.

Add: 2/F., Building 2, No.1-4, Chaxi Sanwei Technical Industrial Park, Gushu,
Xixiang, Bao'an District, Shenzhen, Guangdong, China

Tel: +86-755 2523 4088

E-mail: agc@agc-cert.com

Service Hotline:400 089 2118



Attestation of Global Compliance(Shenzhen)Co.,Ltd.

Add: 2/F., Building 2, No.1-4, Chaxi Sanwei Technical Industrial Park, Gushu, Xixiang, Bao'an District, Shenzhen, Guangdong, China

Tel: +86-755 2523 4088

E-mail: agc@agc-cert.com

Service Hotline:400 089 2118

Test Laboratory: AGC Lab
System Check Body 835 MHz
DUT: Dipole 835 MHz Type: SID 835

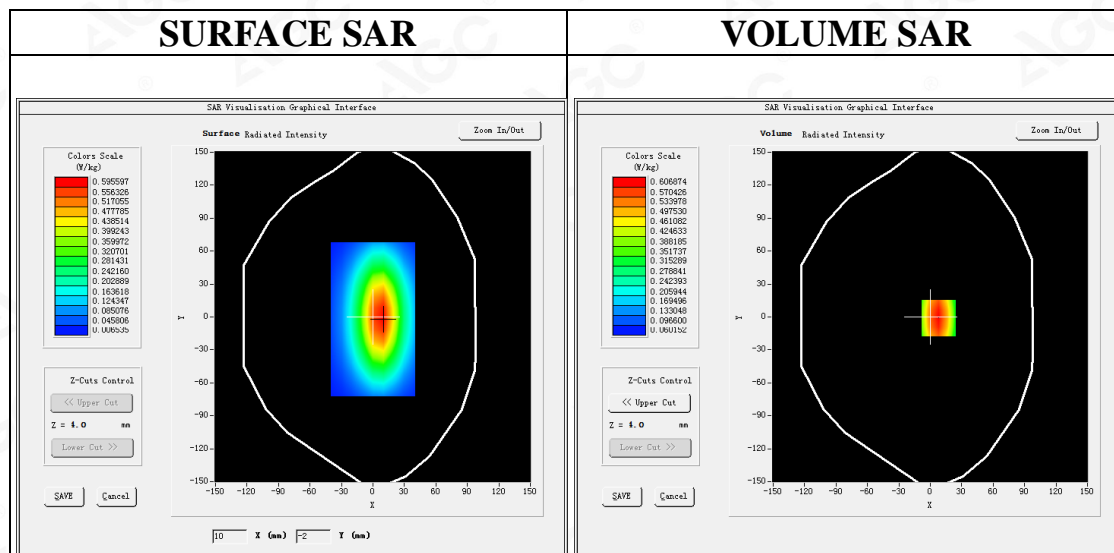
Date: July 03,2019

Communication System CW; Communication System Band: D835 (835.0 MHz); Duty Cycle: 1:1; Conv.F=5.49
Frequency: 835 MHz; Medium parameters used: $f = 835 \text{ MHz}$; $\sigma = 0.96 \text{ mho/m}$; $\epsilon_r = 54.62$; $\rho = 1000 \text{ kg/m}^3$;
Phantom section: Flat Section; Input Power=18dBm
Ambient temperature ($^{\circ}\text{C}$):20.9, Liquid temperature ($^{\circ}\text{C}$): 20.6

SATIMO Configuration:

- Probe: SSE5; Calibrated: Aug. 08,2018; Serial No.: SN 22/12 EP159
- Sensor-Surface: 4mm (Mechanical Surface Detection)
- Phantom: SAM twin phantom
- Measurement SW: OpenSAR V4_02_35

Configuration/System Check 835MHz Body/Area Scan: Measurement grid: dx=8mm, dy=8mm
Configuration/System Check 835MHz Body/Zoom Scan: Measurement grid: dx=8mm,dy=8mm, dz=5mm



Maximum location: X=8.00, Y=-1.00

SAR Peak: 0.84 W/kg

| | |
|-----------------------|----------|
| SAR 10g (W/Kg) | 0.398680 |
| SAR 1g (W/Kg) | 0.602413 |



Attestation of Global Compliance(Shenzhen)Co.,Ltd.

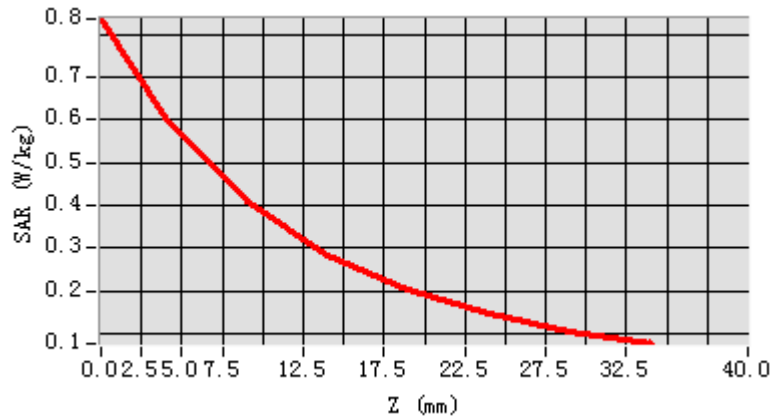
Add: 2/F., Building 2, No.1-4, Chaxi Sanwei Technial Industrial Park, Gushu,
Xixiang, Bao'an District, Shenzhen, Guangdong, China

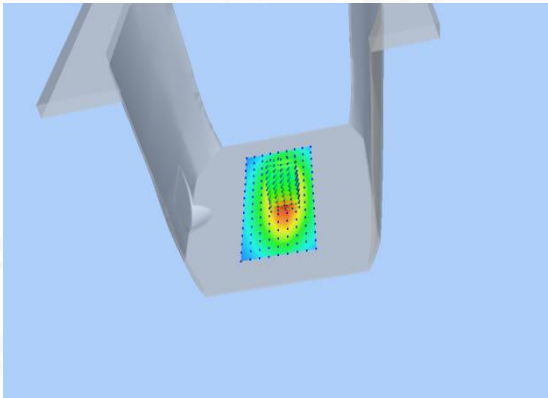
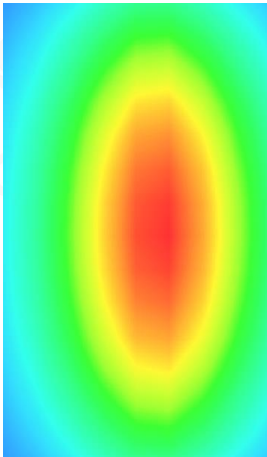
Tel: +86-755 2523 4088

E-mail: agc@agc-cert.com

Service Hotline:400 089 2118

| Z (mm) | 0.00 | 4.00 | 9.00 | 14.00 | 19.00 | 24.00 | 29.00 |
|------------|--------|--------|--------|--------|--------|--------|--------|
| SAR (W/Kg) | 0.8415 | 0.6185 | 0.4235 | 0.2913 | 0.2158 | 0.1543 | 0.1154 |



| 3D screen shot | Hot spot position |
|--|---|
|  |  |



Attestation of Global Compliance(Shenzhen)Co.,Ltd.

Add: 2/F., Building 2, No.1-4, Chaxi Sanwei Technial Industrial Park, Gushu, Xixiang, Bao'an District, Shenzhen, Guangdong, China

Tel: +86-755 2523 4088

E-mail: agc@agc-cert.com

Service Hotline:400 089 2118

Test Laboratory: AGC Lab
System Check Body 1900MHz
DUT: Dipole 1900 MHz; Type: SID 1900

Date: July 17,2019

Communication System: CW; Communication System Band: D1900 (1900.0 MHz); Duty Cycle:1:1; Conv.F=5.39
Frequency: 1900 MHz; Medium parameters used: $f = 1850$ MHz; $\sigma = 1.51$ mho/m; $\epsilon r = 52.64$; $\rho = 1000$ kg/m³ ;
Phantom section: Flat Section; Input Power=18dBm
Ambient temperature (°C):21.8, Liquid temperature (°C): 21.5

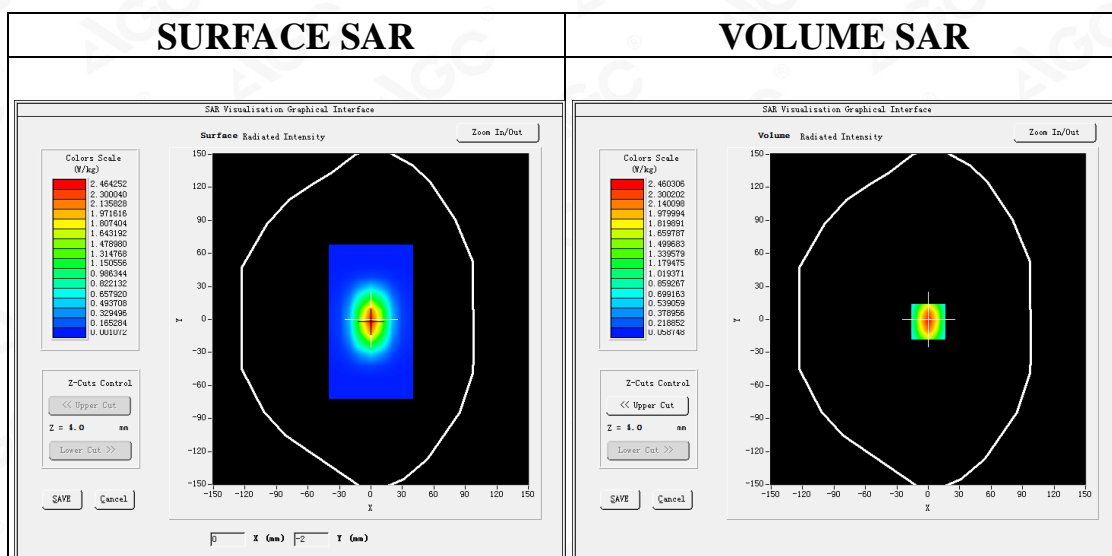
SATIMO Configuration:

Probe: SSE5; Calibrated: Aug. 08,2018; Serial No.: SN 22/12 EP159

- Sensor-Surface: 4mm (Mechanical Surface Detection)
- Phantom: SAM twin phantom
- Measurement SW: OpenSAR V4_02_35

Configuration/System Check 1900MHz Body/Area Scan: Measurement grid: dx=8mm, dy=8mm

Configuration/System Check 1900MHz Body/Zoom Scan: Measurement grid: dx=8mm,dy=8mm, dz=5mm



Maximum location: X=0.00, Y=-2.00
SAR Peak: 3.70 W/kg

| | |
|-----------------------|----------|
| SAR 10g (W/Kg) | 1.282168 |
| SAR 1g (W/Kg) | 2.542687 |



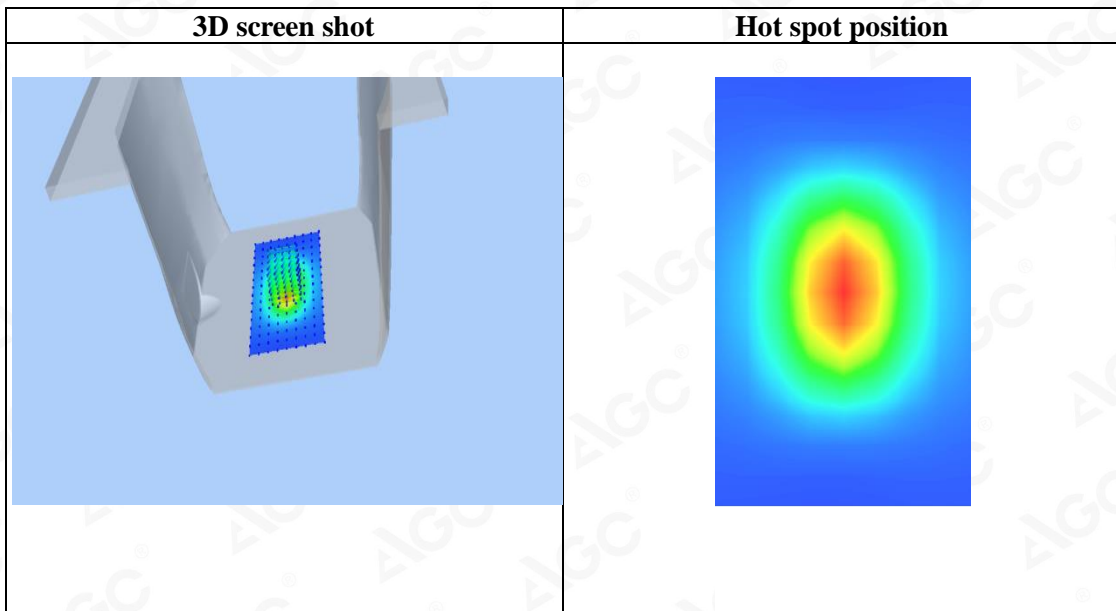
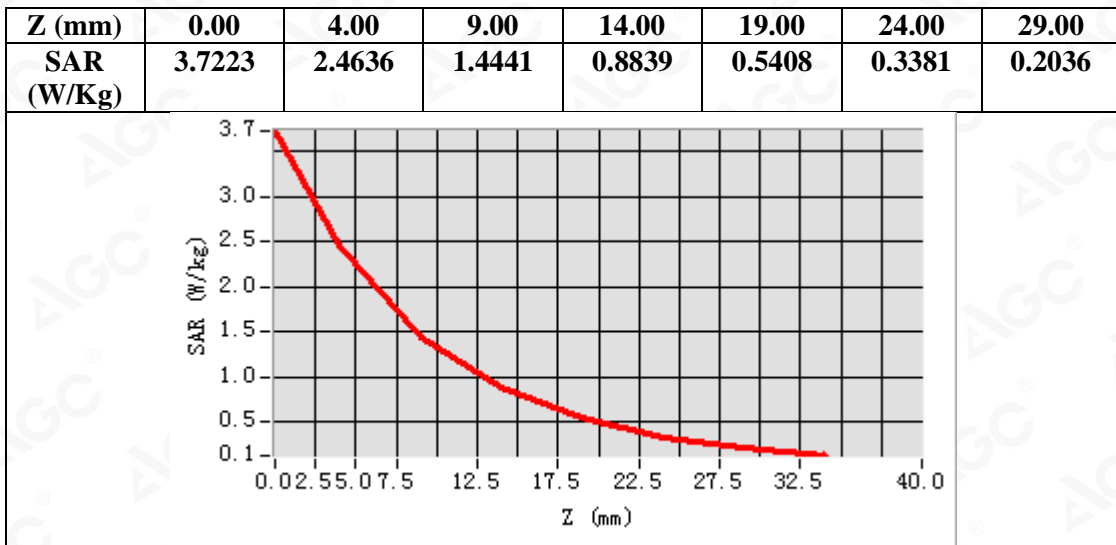
Attestation of Global Compliance(Shenzhen)Co.,Ltd.

Add: 2/F., Building 2, No.1-4, Chaxi Sanwei Technial Industrial Park, Gushu,
Xixiang, Bao'an District, Shenzhen, Guangdong, China

Tel: +86-755 2523 4088

E-mail: agc@agc-cert.com

Service Hotline:400 089 2118



Attestation of Global Compliance(Shenzhen)Co.,Ltd.

Add: 2/F., Building 2, No.1-4, Chaxi Sanwei Technial Industrial Park, Gushu, Xixiang, Bao'an District, Shenzhen, Guangdong, China

Tel: +86-755 2523 4088

E-mail: agc@agc-cert.com

Service Hotline:400 089 2118

Test Laboratory: AGC Lab
System Check Body 1900MHz
DUT: Dipole 1900 MHz; Type: SID 1900

Date: July 03,2019

Communication System: CW; Communication System Band: D1900 (1900.0 MHz); Duty Cycle:1:1; Conv.F=5.39
Frequency: 1900 MHz; Medium parameters used: $f = 1850$ MHz; $\sigma = 1.48$ mho/m; $\epsilon r = 52.64$; $\rho = 1000$ kg/m³ ;
Phantom section: Flat Section; Input Power=18dBm
Ambient temperature (°C):20.9, Liquid temperature (°C): 20.6

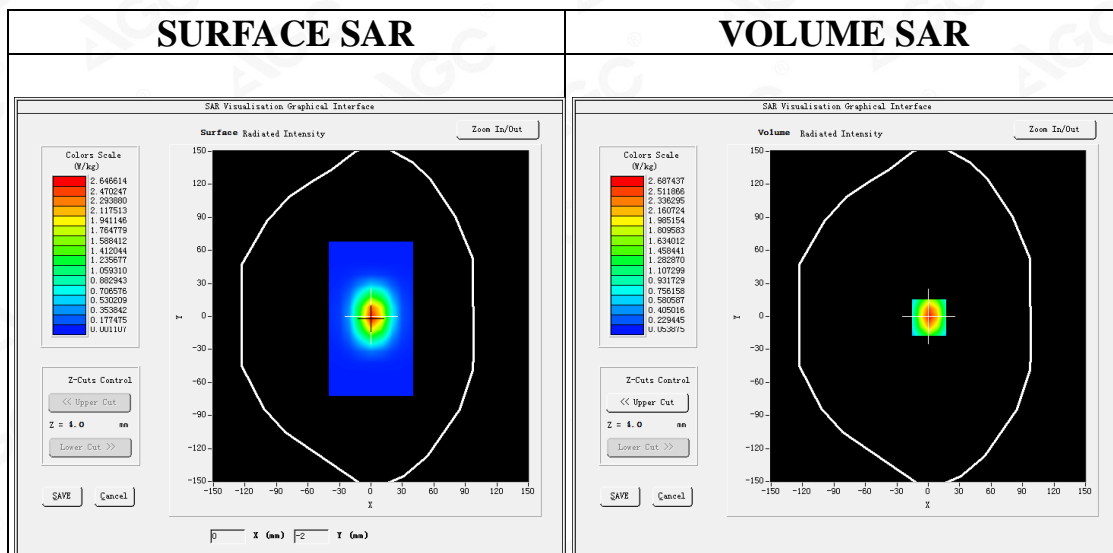
SATIMO Configuration:

Probe: SSE5; Calibrated: Aug. 08,2018; Serial No.: SN 22/12 EP159

- Sensor-Surface: 4mm (Mechanical Surface Detection)
- Phantom: SAM twin phantom
- Measurement SW: OpenSAR V4_02_35

Configuration/System Check 1900MHz Body/Area Scan: Measurement grid: dx=8mm, dy=8mm

Configuration/System Check 1900MHz Body/Zoom Scan: Measurement grid: dx=8mm,dy=8mm, dz=5mm



Maximum location: X=1.00, Y=-1.00
SAR Peak: 4.05 W/kg

| | |
|-----------------------|----------|
| SAR 10g (W/Kg) | 1.312492 |
| SAR 1g (W/Kg) | 2.481597 |



Attestation of Global Compliance(Shenzhen)Co.,Ltd.

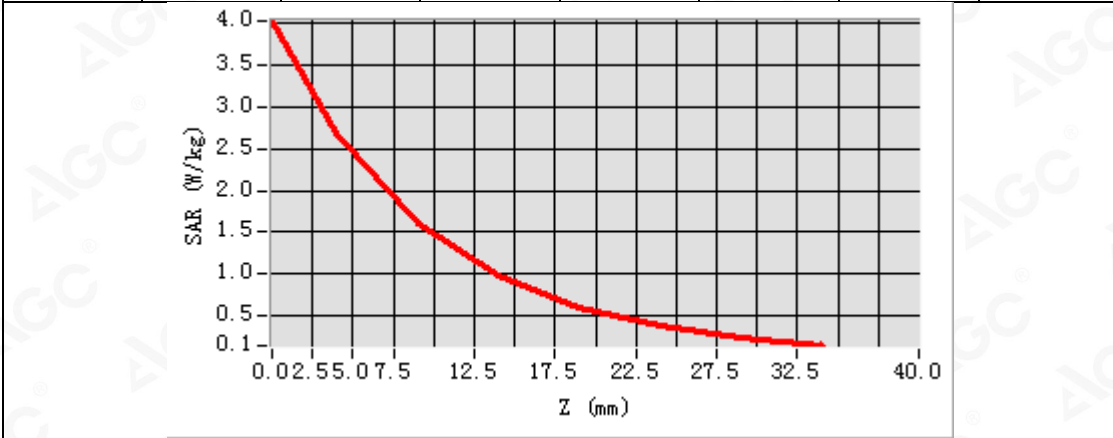
Add: 2/F., Building 2, No.1-4, Chaxi Sanwei Technial Industrial Park, Gushu,
Xixiang, Bao'an District, Shenzhen, Guangdong, China

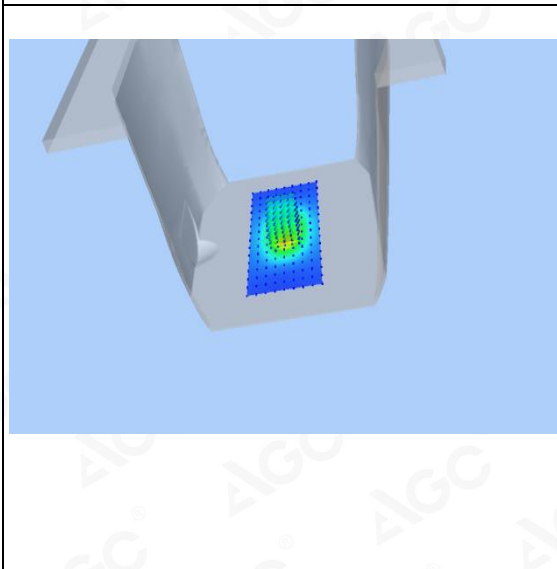
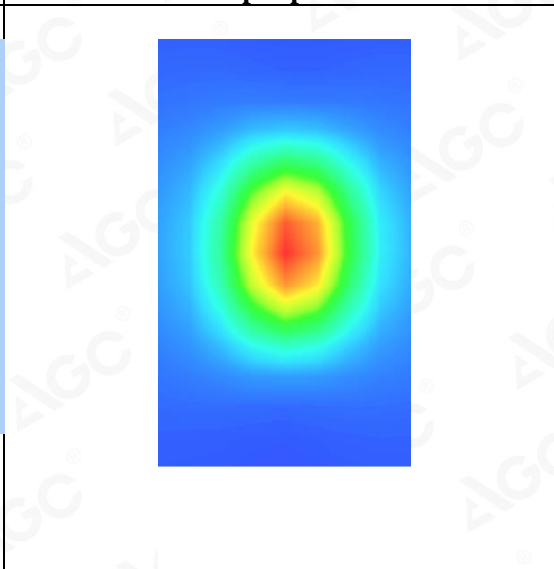
Tel: +86-755 2523 4088

E-mail: agc@agc-cert.com

Service Hotline:400 089 2118

| Z (mm) | 0.00 | 4.00 | 9.00 | 14.00 | 19.00 | 24.00 | 29.00 |
|------------|--------|--------|--------|--------|--------|--------|--------|
| SAR (W/Kg) | 4.0308 | 2.6846 | 1.5954 | 0.9829 | 0.5937 | 0.3682 | 0.2264 |



| 3D screen shot | Hot spot position |
|--|---|
|  |  |



Attestation of Global Compliance(Shenzhen)Co.,Ltd.

Add: 2/F., Building 2, No.1-4, Chaxi Sanwei Technial Industrial Park, Gushu, Xixiang, Bao'an District, Shenzhen, Guangdong, China

Tel: +86-755 2523 4088

E-mail: agc@agc-cert.com

Service Hotline:400 089 2118

Test Laboratory: AGC Lab
System Check Body 2300MHz

Date: July 13,2019

DUT: Dipole 2300 MHz; Type: SID 2300

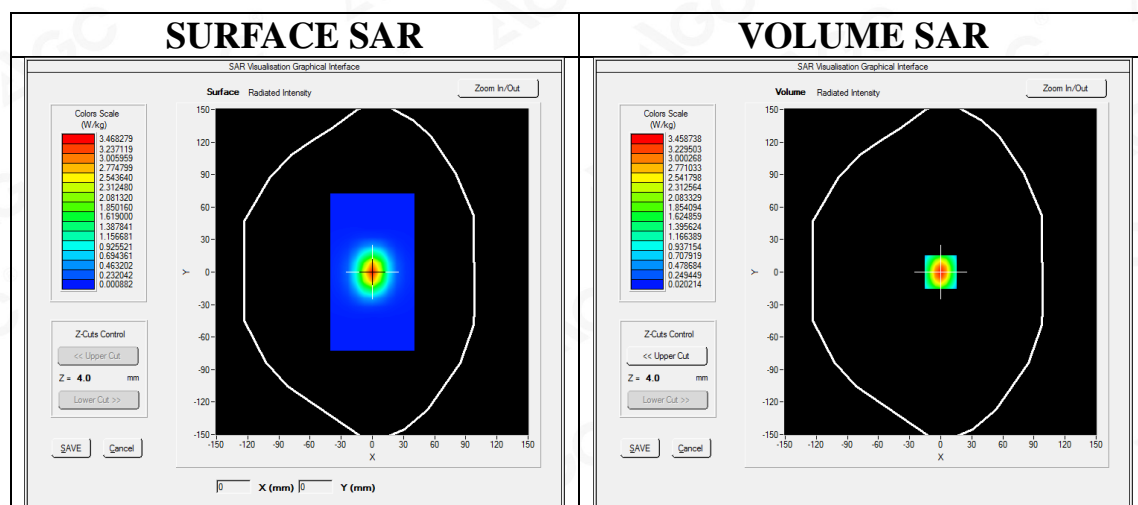
Communication System: CW; Communication System Band: D2300 (2300 MHz); Duty Cycle: 1:1; Conv.F=5.31
Frequency: 2300 MHz; Medium parameters used: $f = 2300$ MHz; $\sigma = 1.79$ mho/m; $\epsilon_r = 52.36$; $\rho = 1000$ kg/m³ ;
Phantom section: Flat Section; Input Power=18dBm
Ambient temperature (°C):22.2 Liquid temperature (°C): 21.9

SATIMO Configuration:

- Probe: SSE5; Calibrated: Aug. 08,2018; Serial No.: SN 22/12 EP159
- Sensor-Surface: 4mm (Mechanical Surface Detection)
- Phantom: SAM twin phantom
- Measurement SW: OpenSAR V4_02_35

Configuration/System Check 2300 Body/Area Scan: Measurement grid: dx=8mm, dy=8mm
Configuration/System Check 2300 Body/Zoom Scan: Measurement grid: dx=5mm,dy=5mm, dz=5mm

| | |
|------------------------|----------------------------|
| Area Scan | dx=8mm dy=8mm, h= 5.00 mm |
| ZoomScan | 5x5x7,dx=8mm dy=8mm dz=5mm |
| Phantom | SAM twin phantom |
| Device Position | Flat |
| Band | CW 2300 |
| Channels | Middle |
| Signal | Crest factor: 1.0 |



Maximum location: X=0.00, Y=0.00

SAR Peak: 5.81 W/kg

| | |
|-----------------------|----------|
| SAR 10g (W/Kg) | 1.462183 |
| SAR 1g (W/Kg) | 3.151667 |



Attestation of Global Compliance(Shenzhen)Co.,Ltd.

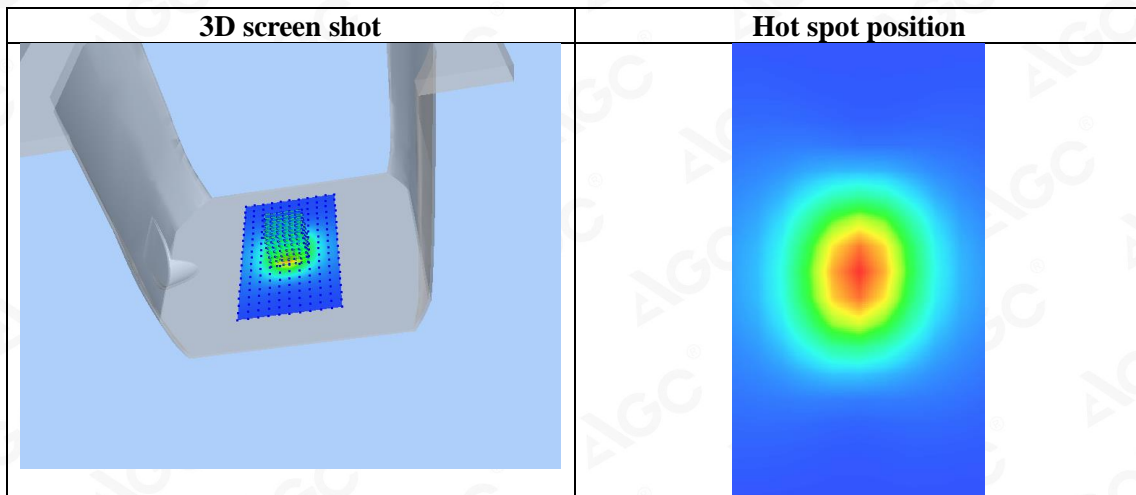
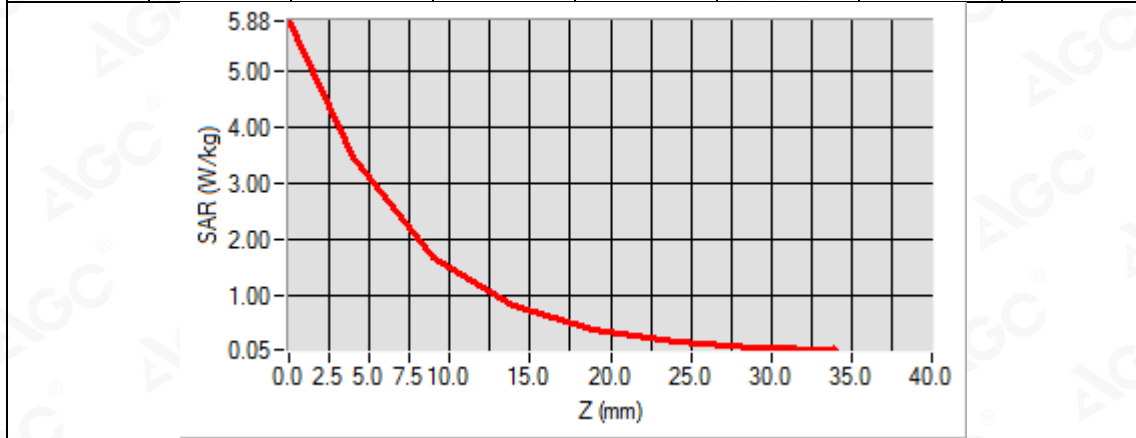
Add: 2/F., Building 2, No.1-4, Chaxi Sanwei Technial Industrial Park, Gushu,
Xixiang, Bao'an District, Shenzhen, Guangdong, China

Tel: +86-755 2523 4088

E-mail: agc@agc-cert.com

Service Hotline:400 089 2118

| Z (mm) | 0.00 | 4.00 | 9.00 | 14.00 | 19.00 | 24.00 | 29.00 |
|------------|--------|--------|--------|--------|--------|--------|--------|
| SAR (W/Kg) | 5.8814 | 3.4526 | 1.6837 | 0.8317 | 0.4157 | 0.2137 | 0.1084 |



Attestation of Global Compliance(Shenzhen)Co.,Ltd.

Add: 2/F., Building 2, No.1-4, Chaxi Sanwei Technial Industrial Park, Gushu, Xixiang, Bao'an District, Shenzhen, Guangdong, China

Tel: +86-755 2523 4088

E-mail: agc@agc-cert.com

Service Hotline:400 089 2118

Test Laboratory: AGC Lab
System Check Body 2450 MHz

Date: July 09,2019

DUT: Dipole 2450 MHz Type: SID 2450

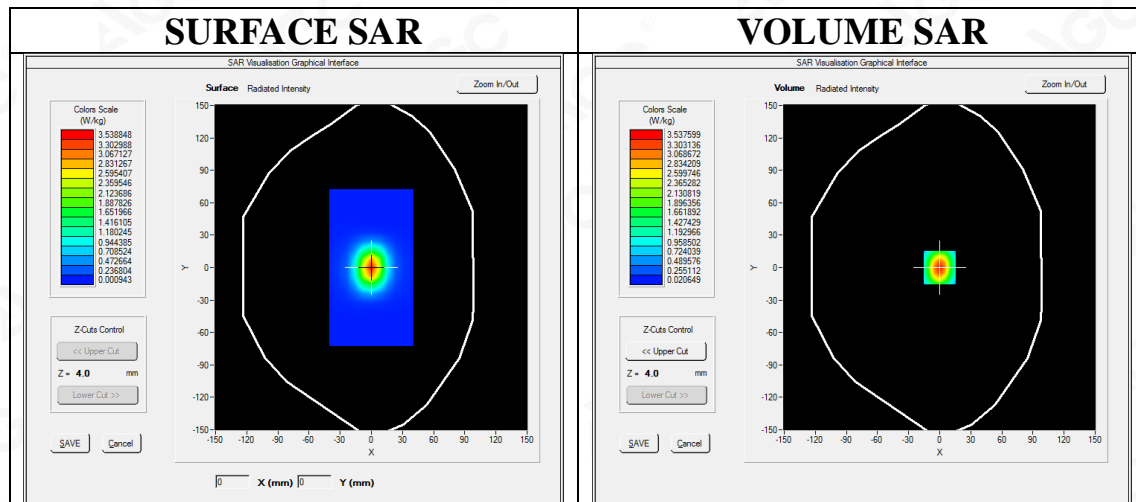
Communication System CW; Communication System Band: D2450 (2450.0 MHz); Duty Cycle: 1:1; Conv.F=5.04
Frequency: 2450 MHz; Medium parameters used: $f = 2450$ MHz; $\sigma = 1.92$ mho/m; $\epsilon r = 52.64$; $\rho = 1000$ kg/m³ ;
Phantom section: Flat Section; Input Power=18dBm
Ambient temperature (°C):20.6, Liquid temperature (°C): 20.3

SATIMO Configuration

- Probe: SSE5; Calibrated: Aug. 08,2018; Serial No.: SN 22/12 EP159
- Sensor-Surface: 4mm (Mechanical Surface Detection)
- Phantom: SAM twin phantom
- Measurement SW: OpenSAR V4_02_35

Configuration/System Check 2450MHz Body/Area Scan: Measurement grid: dx=8mm, dy=8mm

Configuration/System Check 2450MHz Body/Zoom Scan: Measurement grid: dx=5mm,dy=5mm, dz=5mm



Maximum location: X=0.00, Y=0.00

SAR Peak: 5.94 W/kg

| | |
|-----------------------|-----------------|
| SAR 10g (W/Kg) | 1.499753 |
| SAR 1g (W/Kg) | 3.446582 |

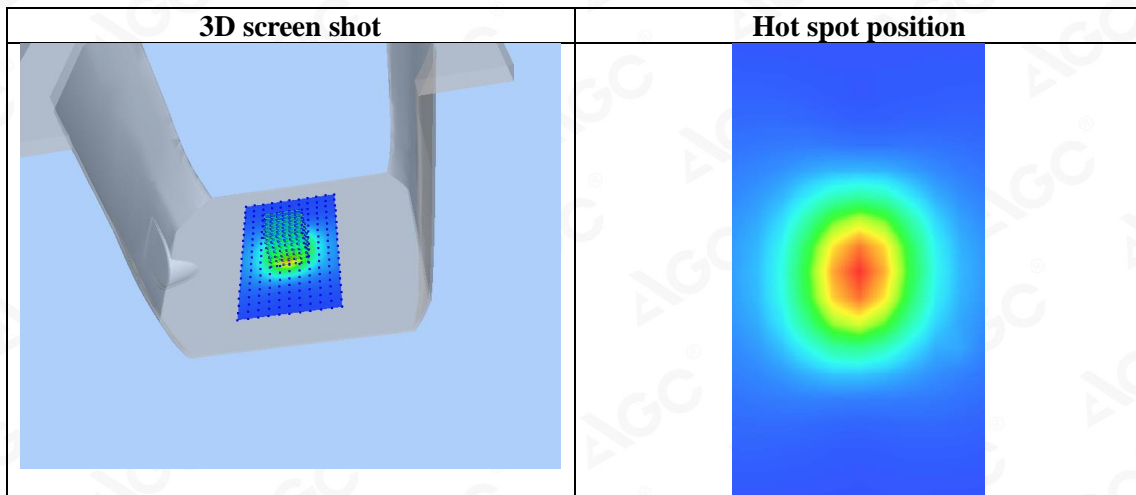
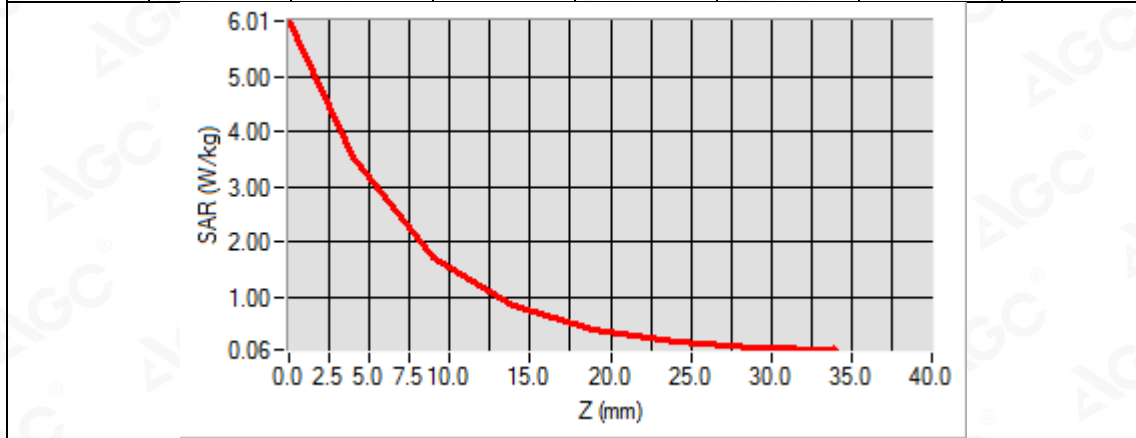


Attestation of Global Compliance(Shenzhen)Co.,Ltd.

Add: 2/F., Building 2, No.1-4, Chaxi Sanwei Technial Industrial Park, Gushu, Xixiang, Bao'an District, Shenzhen, Guangdong, China

Tel: +86-755 2523 4088 E-mail: agc@agc-cert.com Service Hotline:400 089 2118

| Z (mm) | 0.00 | 4.00 | 9.00 | 14.00 | 19.00 | 24.00 | 29.00 |
|------------|--------|--------|--------|--------|--------|--------|--------|
| SAR (W/Kg) | 6.0526 | 3.5325 | 1.7284 | 0.8682 | 0.4225 | 0.2164 | 0.1257 |



Attestation of Global Compliance(Shenzhen)Co.,Ltd.

Add: 2/F., Building 2, No.1-4, Chaxi Sanwei Technial Industrial Park, Gushu, Xixiang, Bao'an District, Shenzhen, Guangdong, China

Tel: +86-755 2523 4088

E-mail: agc@agc-cert.com

Service Hotline:400 089 2118

Test Laboratory: AGC Lab
System Check Body 2600MHz
DUT: Dipole 2600 MHz; Type: SID 2600

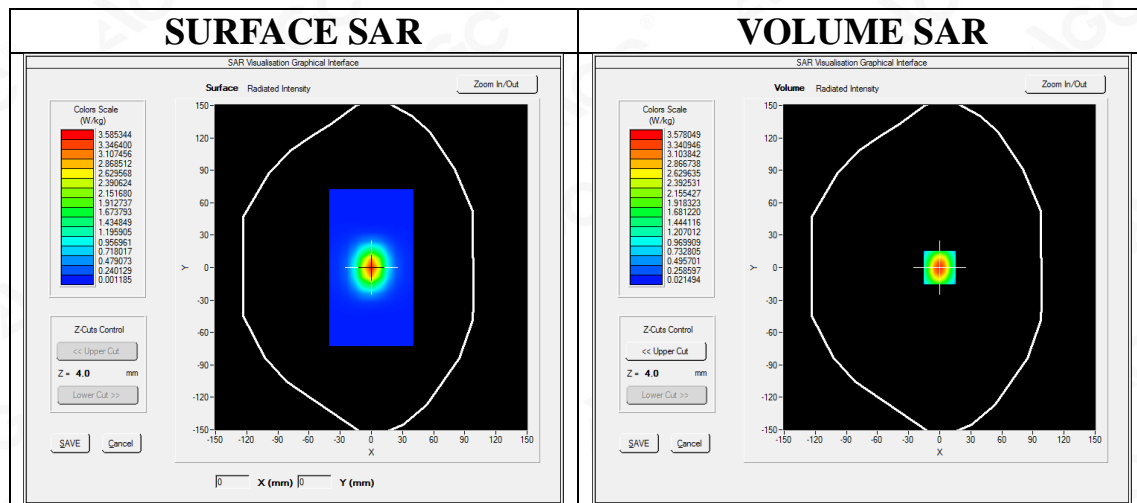
Date: July 16,2019

Communication System: CW; Communication System Band: D2600 (2600.0 MHz); Duty Cycle: 1:1; Conv.F=4.68
Frequency:2600 MHz; Medium parameters used: $f = 2600$ MHz; $\sigma = 2.16$ mho/m; $\epsilon_r = 52.00$; $\rho = 1000$ kg/m³ ;
Phantom section: Flat Section; Input Power=18dBm
Ambient temperature (°C): 20.9, Liquid temperature (°C): 20.6

SATIMO Configuration:

- Probe: SSE5; Calibrated: Aug. 08,2018; Serial No.: SN 22/12 EP159
- Sensor-Surface: 4mm (Mechanical Surface Detection)
- Phantom: SAM twin phantom
- Measurement SW: OpenSAR V4_02_35

Configuration/System Check 2600 Body/Area Scan: Measurement grid: dx=8mm,dy=8mm
Configuration/System Check 2600 Body /Zoom Scan: Measurement grid: dx=8mm,dy=8mm, dz=5mm



Maximum location: X=0.00, Y=0.00
SAR Peak: 5.99 W/kg

| | |
|-----------------------|----------|
| SAR 10g (W/Kg) | 1.572548 |
| SAR 1g (W/Kg) | 3.590341 |

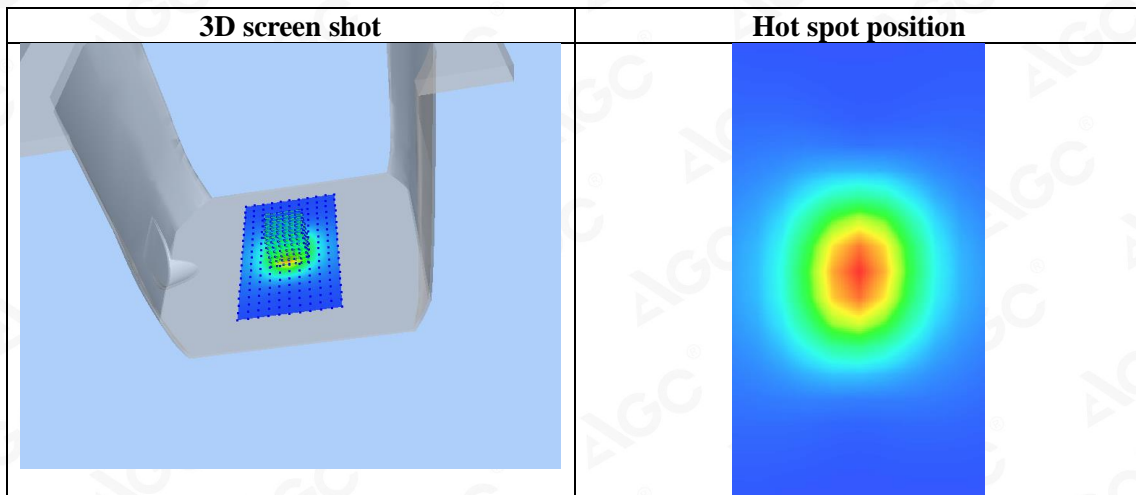
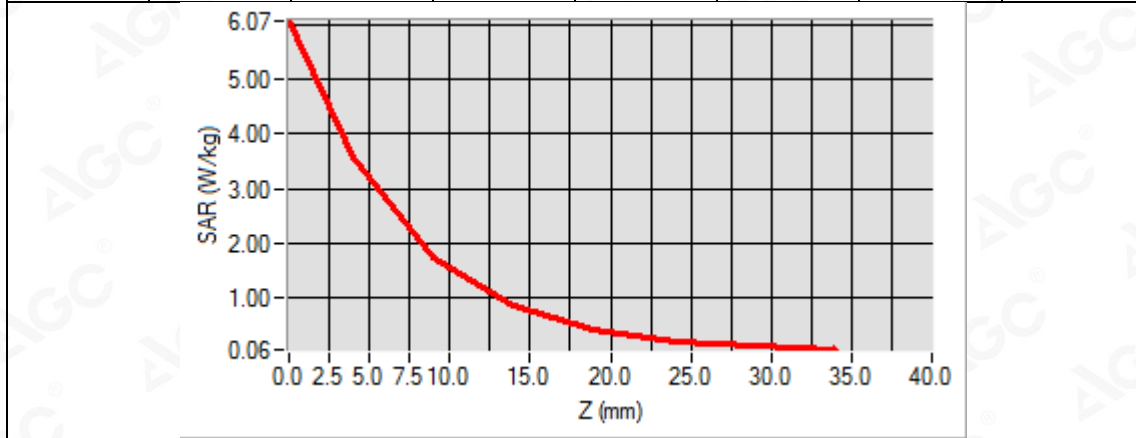


Attestation of Global Compliance(Shenzhen)Co.,Ltd.

Add: 2/F., Building 2, No.1-4, Chaxi Sanwei Technial Industrial Park, Gushu,
Xixiang, Bao'an District, Shenzhen, Guangdong, China

Tel: +86-755 2523 4088 E-mail: agc@agc-cert.com Service Hotline:400 089 2118

| Z (mm) | 0.00 | 4.00 | 9.00 | 14.00 | 19.00 | 24.00 | 29.00 |
|------------|--------|--------|--------|--------|--------|--------|--------|
| SAR (W/Kg) | 6.0636 | 3.5787 | 1.7473 | 0.8656 | 0.4375 | 0.2293 | 0.1148 |



Attestation of Global Compliance(Shenzhen)Co.,Ltd.

Add: 2/F., Building 2, No.1-4, Chaxi Sanwei Technial Industrial Park, Gushu, Xixiang, Bao'an District, Shenzhen, Guangdong, China

Tel: +86-755 2523 4088

E-mail: agc@agc-cert.com

Service Hotline:400 089 2118

APPENDIX B. SAR MEASUREMENT DATA

Test Laboratory: AGC Lab
GPRS 850 Mid- Body- Back (3up)
DUT: Portable Translator; Type: HYP10

Date: July 17,2019

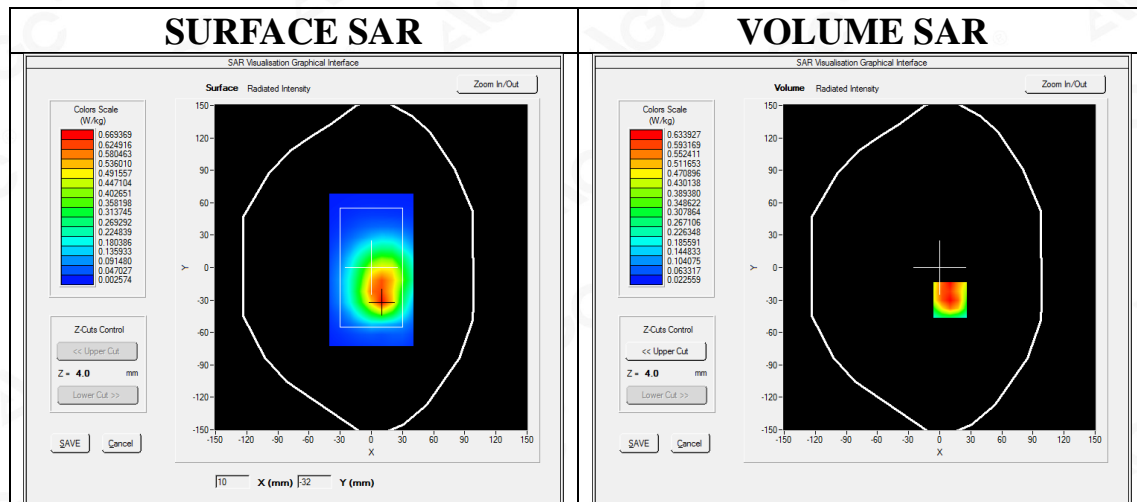
Communication System: GPRS-3 Slot; Communication System Band: GSM 850; Duty Cycle: 1:2.7; Conv.F=5.49;
Frequency: 836.6 MHz; Medium parameters used: $f = 835$ MHz; $\sigma = 0.97$ mho/m; $\epsilon_r = 54.22$; $\rho = 1000$ kg/m³ ;
Phantom section: Flat Section
Ambient temperature (°C): 21.8, Liquid temperature (°C): 21.6

SATIMO Configuration:

- Probe: SSE5; Calibrated: Aug. 08,2018; Serial No.: SN 22/12 EP159
- Sensor-Surface: 4mm (Mechanical Surface Detection)
- Phantom: SAM twin phantom
- Measurement SW: OpenSAR V4_02_35

Configuration/GPRS 850 Mid-Body-Back/Area Scan: Measurement grid: dx=8mm, dy=8mm
Configuration/GPRS 850 Mid-Body-Back/Zoom Scan: Measurement grid: dx=8mm,dy=8mm, dz=5mm;

| | |
|-----------------|-------------------------------------|
| Area Scan | surf_sam_plan.txt, h= 5.00 mm |
| Zoom Scan | 5x5x7,dx=8mm dy=8mm dz=5mm,Complete |
| Phantom | Validation plane |
| Device Position | Body Back |
| Band | GSM 850 |
| Channels | Middle |
| Signal | TDMA (Crest factor: 2.7) |



Maximum location: X=10.00, Y=-30.00

SAR Peak: 0.92 W/kg

| | |
|----------------|----------|
| SAR 10g (W/Kg) | 0.406075 |
| SAR 1g (W/Kg) | 0.619228 |



Attestation of Global Compliance(Shenzhen)Co.,Ltd.

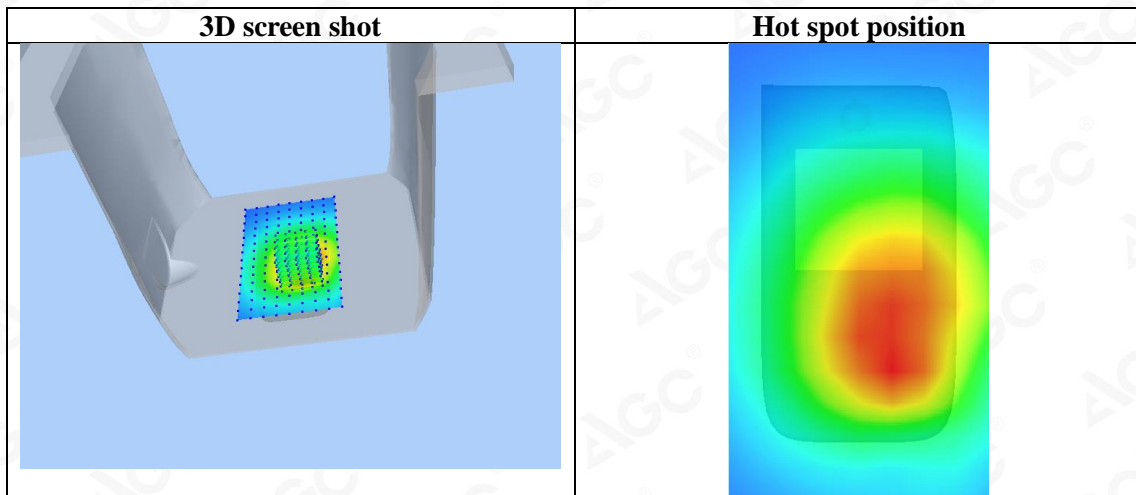
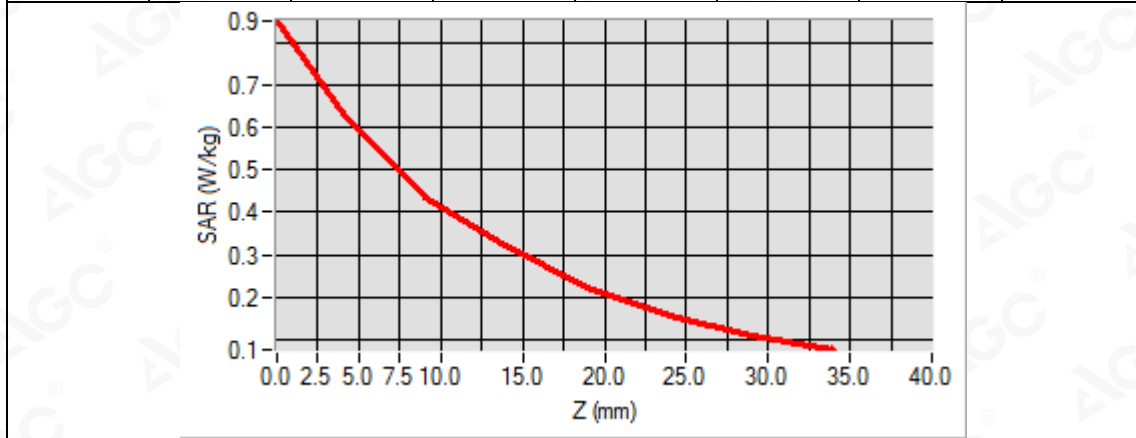
Add: 2/F., Building 2, No.1-4, Chaxi Sanwei Technial Industrial Park, Gushu,
Xixiang, Bao'an District, Shenzhen, Guangdong, China

Tel: +86-755 2523 4088

E-mail: agc@agc-cert.com

Service Hotline:400 089 2118

| Z (mm) | 0.00 | 4.00 | 9.00 | 14.00 | 19.00 | 24.00 | 29.00 |
|------------|--------|--------|--------|--------|--------|--------|--------|
| SAR (W/Kg) | 0.8539 | 0.6339 | 0.4374 | 0.3214 | 0.2223 | 0.1533 | 0.1090 |



Attestation of Global Compliance(Shenzhen)Co.,Ltd.

Add: 2/F., Building 2, No.1-4, Chaxi Sanwei Technial Industrial Park, Gushu, Xixiang, Bao'an District, Shenzhen, Guangdong, China

Tel: +86-755 2523 4088

E-mail: agc@agc-cert.com

Service Hotline:400 089 2118

Test Laboratory: AGC Lab
GPRS 1900 Mid-Body-Back (3up)
DUT: Portable Translator; Type: HYP10

Date: July 17,2019

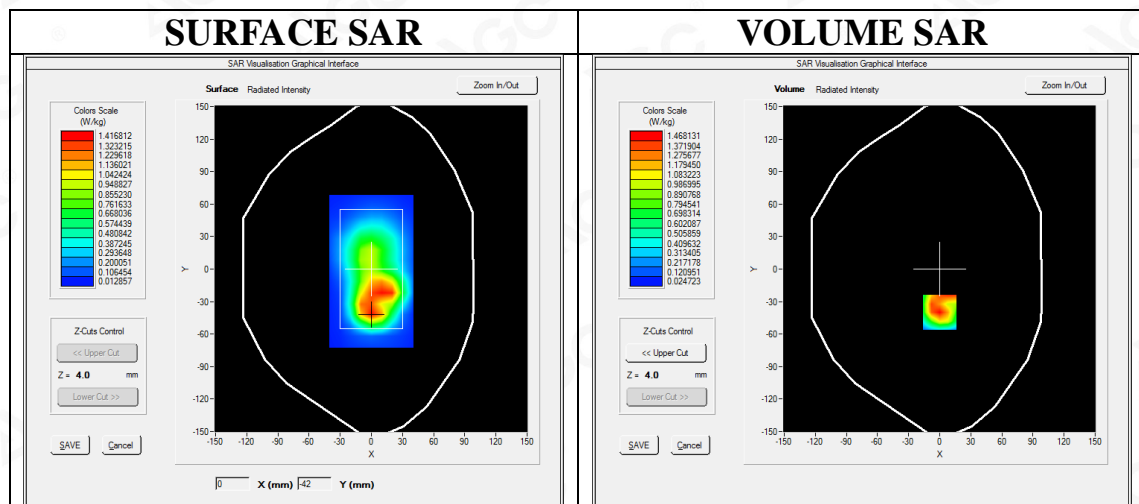
Communication System: GPRS-3Slot; Communication System Band: PCS 1900; Duty Cycle: 1:2.7; Conv.F=5.39; Frequency: 1880 MHz; Medium parameters used: $f = 1850$ MHz; $\sigma = 1.50$ mho/m; $\epsilon r = 53.17$; $\rho = 1000$ kg/m³ ; Phantom section: Flat Section
Ambient temperature (°C): 21.8, Liquid temperature (°C): 21.5

SATIMO Configuration:

- Probe: SSE5; Calibrated: Aug. 08,2018; Serial No.: SN 22/12 EP159
- Sensor-Surface: 4mm (Mechanical Surface Detection)
- Phantom: SAM twin phantom
- Measurement SW: OpenSAR V4_02_35

Configuration/GPRS1900 Mid-Body-Back/Area Scan: Measurement grid: dx=8mm, dy=8mm
Configuration/GPRS1900 Mid-Body-Back/Zoom Scan: Measurement grid: dx=8mm,dy=8mm, dz=5mm;

| | |
|------------------------|-------------------------------------|
| Area Scan | surf_sam_plan.txt, h= 5.00 mm |
| Zoom Scan | 5x5x7,dx=8mm dy=8mm dz=5mm,Complete |
| Phantom | Validation plane |
| Device Position | Body Back |
| Band | PCS 1900 |
| Channels | Middle |
| Signal | TDMA (Crest factor: 2.7) |



Maximum location: X=0.00, Y=-40.00

SAR Peak: 2.30 W/kg

| | |
|-----------------------|----------|
| SAR 10g (W/Kg) | 0.737397 |
| SAR 1g (W/Kg) | 1.391196 |



Attestation of Global Compliance(Shenzhen)Co.,Ltd.

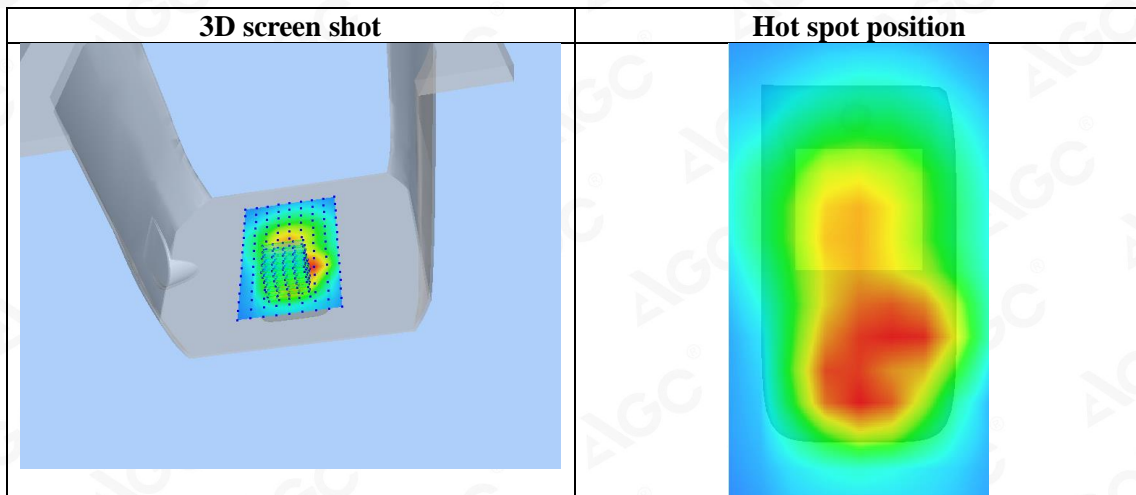
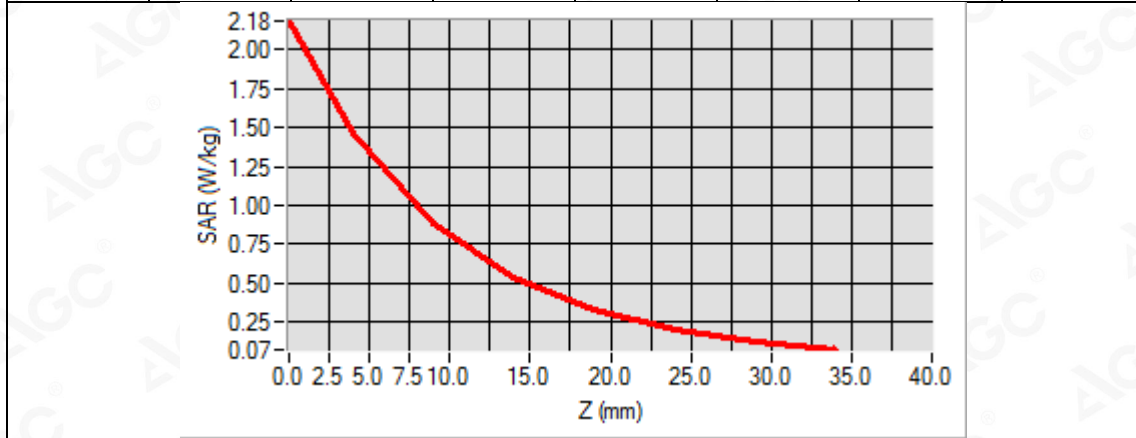
Add: 2/F., Building 2, No.1-4, Chaxi Sanwei Technial Industrial Park, Gushu, Xixiang, Bao'an District, Shenzhen, Guangdong, China

Tel: +86-755 2523 4088

E-mail: agc@agc-cert.com

Service Hotline:400 089 2118

| Z (mm) | 0.00 | 4.00 | 9.00 | 14.00 | 19.00 | 24.00 | 29.00 |
|------------|--------|--------|--------|--------|--------|--------|--------|
| SAR (W/Kg) | 2.1840 | 1.4681 | 0.8787 | 0.5402 | 0.3272 | 0.2010 | 0.1243 |



Attestation of Global Compliance(Shenzhen)Co.,Ltd.

Add: 2/F., Building 2, No.1-4, Chaxi Sanwei Technical Industrial Park, Gushu, Xixiang, Bao'an District, Shenzhen, Guangdong, China

Tel: +86-755 2523 4088

E-mail: agc@agc-cert.com

Service Hotline:400 089 2118

Test Laboratory: AGC Lab
WCDMA Band II Mid-Body-Towards Grounds (RMC 12.2kbps)
DUT: Portable Translator; Type: HYP10

Date: July 17,2019

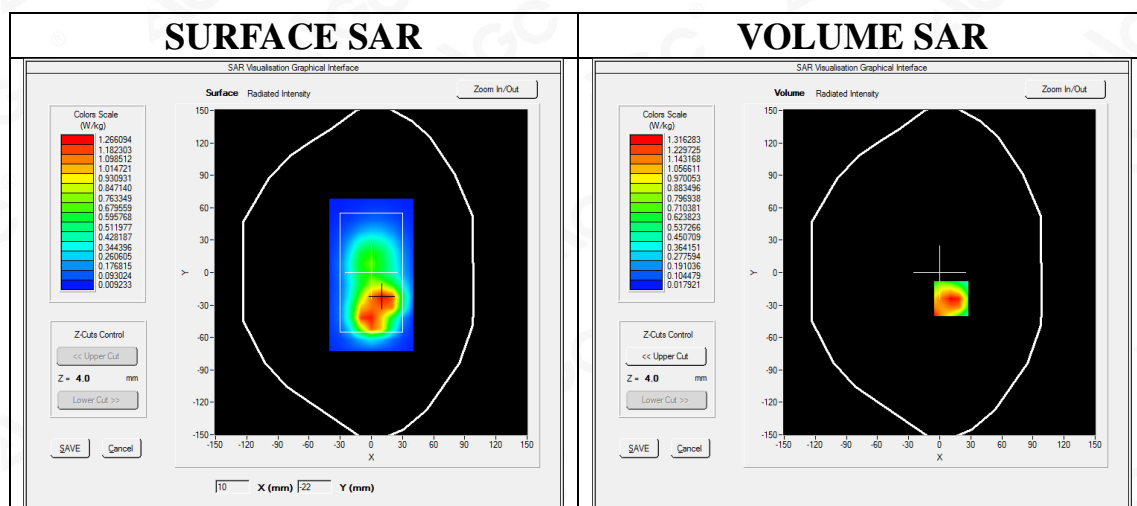
Communication System: UMTS; Communication System Band: Band II UTRA/FDD ;Duty Cycle:1:1; Conv.F=5.39;
Frequency: 1880 MHz; Medium parameters used: $f = 1850$ MHz; $\sigma = 1.50$ mho/m; $\epsilon r = 53.17$; $\rho = 1000$ kg/m³ ;
Phantom section: Flat Section
Ambient temperature (°C): 21.8, Liquid temperature (°C): 21.5

SATIMO Configuration:

- Probe: SSE5; Calibrated: Aug. 08,2018; Serial No.: SN 22/12 EP159
- Sensor-Surface: 4mm (Mechanical Surface Detection)
- Phantom: SAM twin phantom
- Measurement SW: OpenSAR V4_02_35

Configuration/ WCDMA band II Mid-Body-back/Area Scan: Measurement grid: dx=8mm, dy=8mm
Configuration/ WCDMA band II Mid-Body-back/Zoom Scan: Measurement grid: dx=8mm,dy=8mm, dz=5mm;

| | |
|------------------------|-------------------------------------|
| Area Scan | surf_sam_plan.txt, h= 5.00 mm |
| ZoomScan | 5x5x7,dx=8mm dy=8mm dz=5mm,Complete |
| Phantom | Validation plane |
| Device Position | Body Back |
| Band | WCDMA band II |
| Channels | Middle |
| Signal | CDMA (Crest factor: 1.0) |



Maximum location: X=11.00, Y=-24.00

SAR Peak: 2.21 W/kg

| | |
|-----------------------|----------|
| SAR 10g (W/Kg) | 0.667273 |
| SAR 1g (W/Kg) | 1.268398 |



Attestation of Global Compliance(Shenzhen)Co.,Ltd.

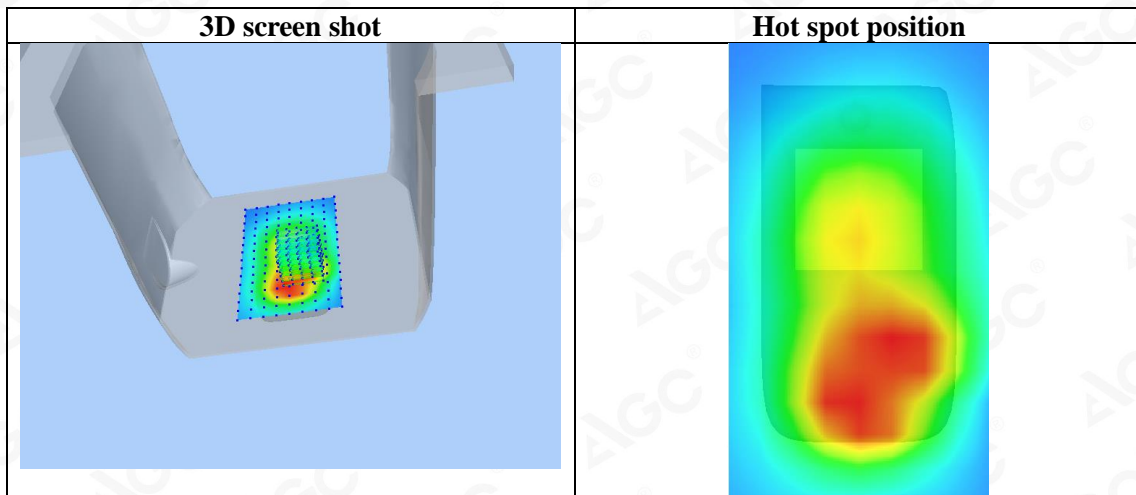
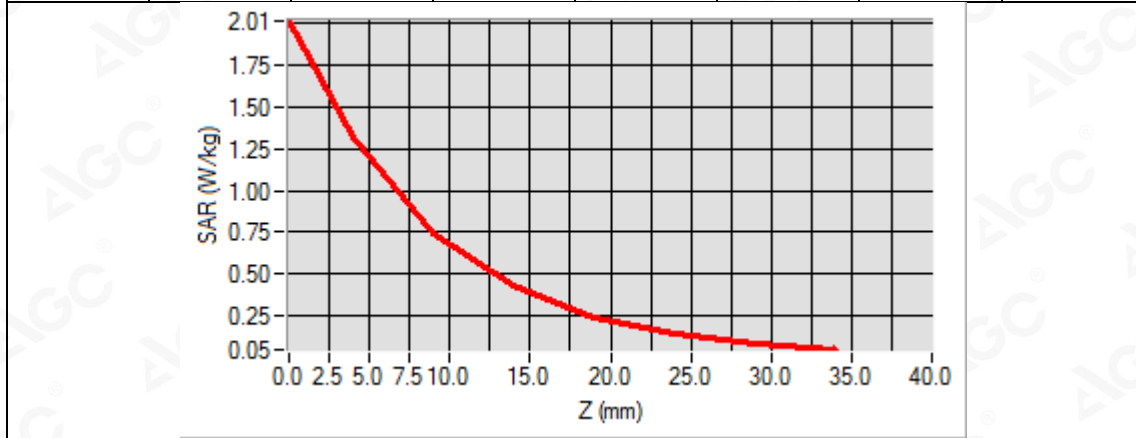
Add: 2/F., Building 2, No.1-4, Chaxi Sanwei Technial Industrial Park, Gushu,
Xixiang, Bao'an District, Shenzhen, Guangdong, China

Tel: +86-755 2523 4088

E-mail: agc@agc-cert.com

Service Hotline:400 089 2118

| Z (mm) | 0.00 | 4.00 | 9.00 | 14.00 | 19.00 | 24.00 | 29.00 |
|------------|--------|--------|--------|--------|--------|--------|--------|
| SAR (W/Kg) | 2.0148 | 1.3163 | 0.7494 | 0.4260 | 0.2393 | 0.1379 | 0.0803 |



Attestation of Global Compliance(Shenzhen)Co.,Ltd.

Add: 2/F., Building 2, No.1-4, Chaxi Sanwei Technial Industrial Park, Gushu, Xixiang, Bao'an District, Shenzhen, Guangdong, China

Tel: +86-755 2523 4088

E-mail: agc@agc-cert.com

Service Hotline:400 089 2118

Test Laboratory: AGC Lab

Date: July 17,2019

WCDMA Band V Mid-Body-Towards Grounds (RMC)

DUT: Portable Translator; Type: HYP10

Communication System: UMTS; Communication System Band: BAND V UTRA/FDD; Duty Cycle:1: 1; Conv.F=5.49; Frequency: 836.6 MHz; Medium parameters used: $f = 835\text{MHz}$; $\sigma = 0.97 \text{ mho/m}$; $\epsilon_r = 54.22$; $\rho = 1000 \text{ kg/m}^3$; Phantom section: Flat Section
Ambient temperature ($^{\circ}\text{C}$): 21.8, Liquid temperature ($^{\circ}\text{C}$): 21.6

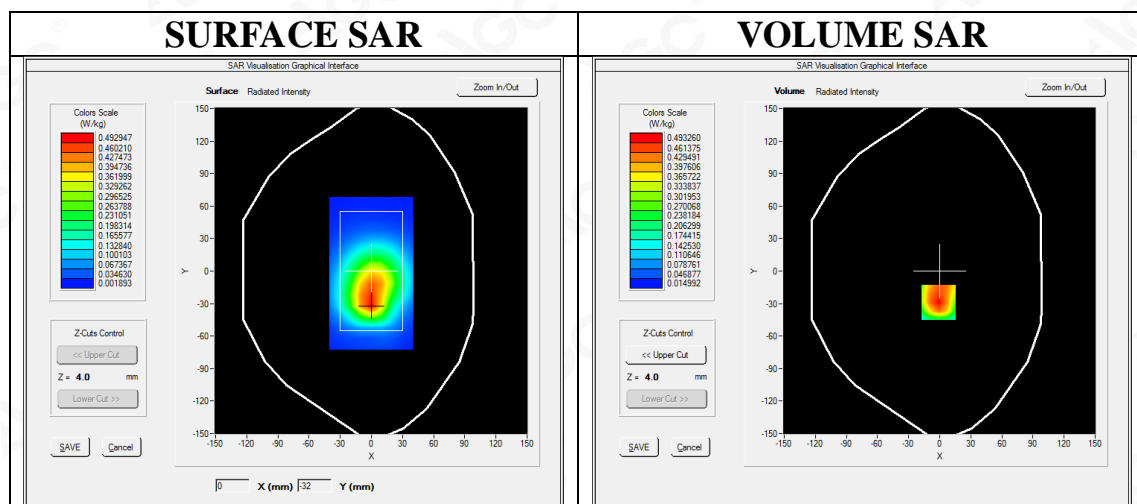
SATIMO Configuration:

- Probe: SSE5; Calibrated: Aug. 08,2018; Serial No.: SN 22/12 EP159
- Sensor-Surface: 4mm (Mechanical Surface Detection)
- Phantom: SAM twin phantom
- Measurement SW: OpenSAR V4_02_35

Configuration/ WCDMA Band V Mid-Body-Back/Area Scan: Measurement grid: dx=8mm, dy=8mm

Configuration/ WCDMA Band V Mid-Body-Back/Zoom Scan: Measurement grid: dx=8mm,dy=8mm, dz=5mm;

| | |
|-----------------|-------------------------------------|
| Area Scan | surf_sam_plan.txt, h= 5.00 mm |
| ZoomScan | 5x5x7,dx=8mm dy=8mm dz=5mm,Complete |
| Phantom | Validation plane |
| Device Position | Body Back |
| Band | WCDMA Band V |
| Channels | Middle |
| Signal | CDMA (Crest factor: 1.0) |



Maximum location: X=-1.00, Y=-29.00

SAR Peak: 0.70 W/kg

| | |
|----------------|----------|
| SAR 10g (W/Kg) | 0.305430 |
| SAR 1g (W/Kg) | 0.475487 |



Attestation of Global Compliance(Shenzhen)Co.,Ltd.

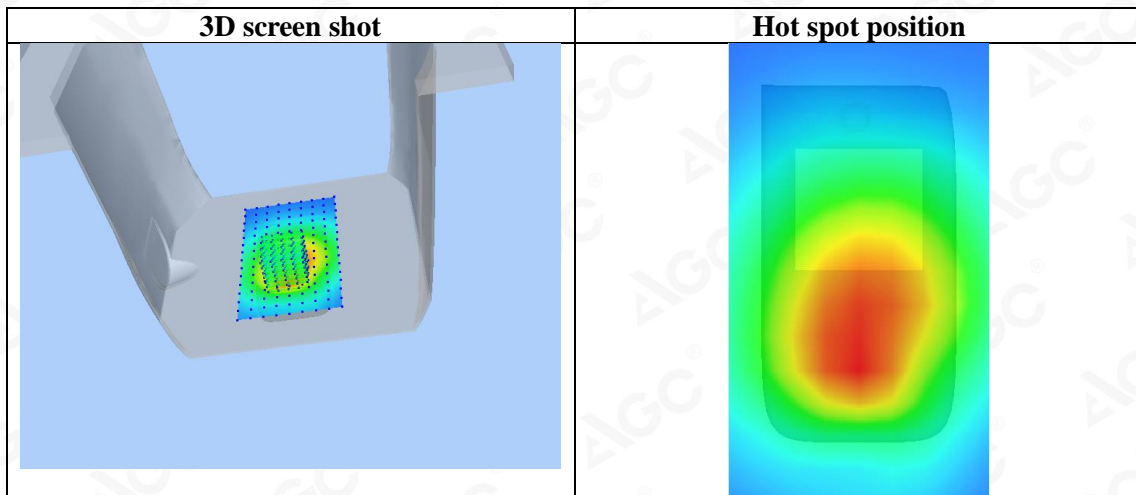
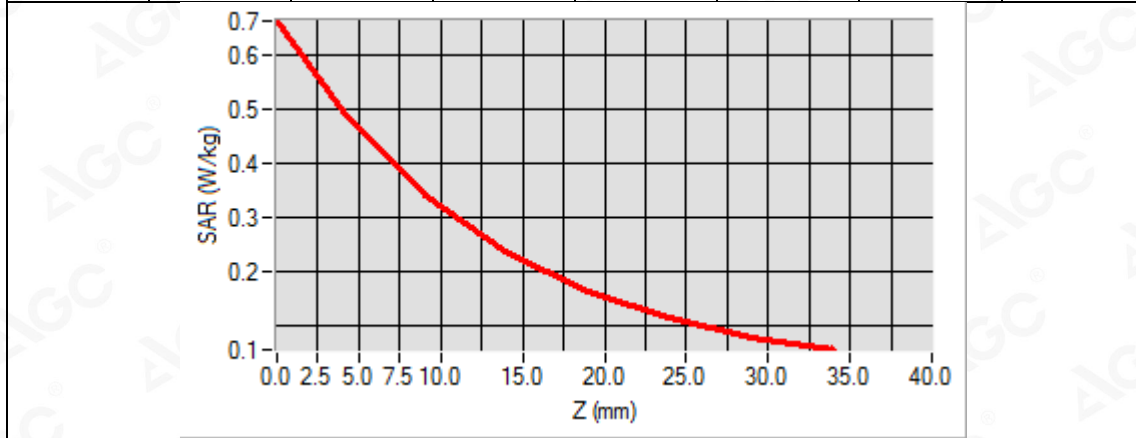
Add: 2/F., Building 2, No.1-4, Chaxi Sanwei Technial Industrial Park, Gushu, Xixiang, Bao'an District, Shenzhen, Guangdong, China

Tel: +86-755 2523 4088

E-mail: agc@agc-cert.com

Service Hotline:400 089 2118

| Z (mm) | 0.00 | 4.00 | 9.00 | 14.00 | 19.00 | 24.00 | 29.00 |
|------------|--------|--------|--------|--------|--------|--------|--------|
| SAR (W/Kg) | 0.6613 | 0.4933 | 0.3398 | 0.2343 | 0.1615 | 0.1117 | 0.0775 |



Attestation of Global Compliance(Shenzhen)Co.,Ltd.

Add: 2/F., Building 2, No.1-4, Chaxi Sanwei Technial Industrial Park, Gushu, Xixiang, Bao'an District, Shenzhen, Guangdong, China

Tel: +86-755 2523 4088

E-mail: agc@agc-cert.com

Service Hotline:400 089 2118

Test Laboratory: AGC Lab
LTE Band 2 Low-Body-Back (1 RB#0)
DUT: Portable Translator; Type: HYP10

Date: July 03,2019

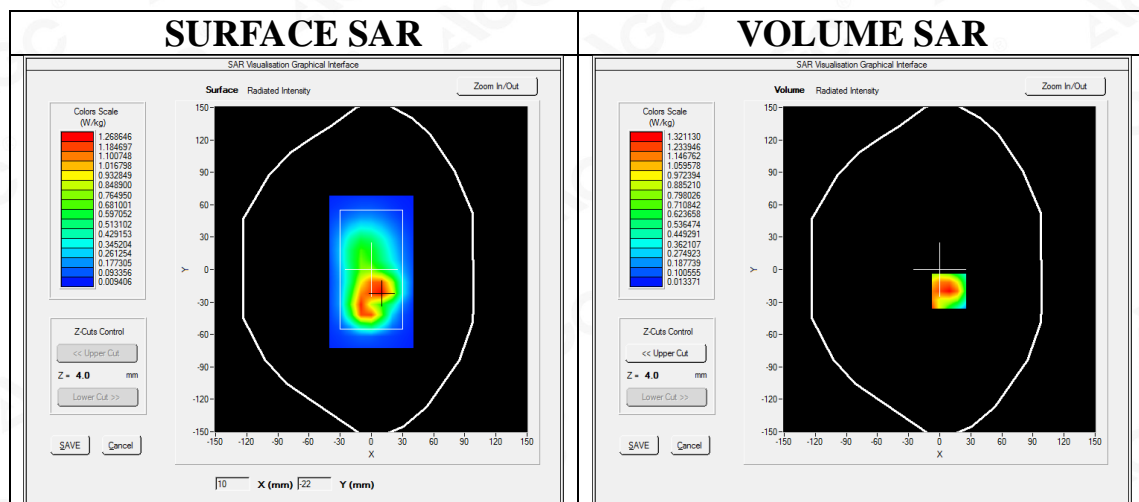
Communication System: LTE; Communication System Band: LTE Band 2; Duty Cycle:1:1; Conv.F=5.39;
Frequency:1860MHz; Medium parameters used: $f = 1850$ MHz; $\sigma = 1.46$ mho/m; $\epsilon r = 53.91$; $\rho = 1000$ kg/m³ ;
Phantom section: Flat Section
Ambient temperature (°C): 20.9, Liquid temperature (°C): 20.6

SATIMO Configuration:

- Probe: SSE5; Calibrated: Aug. 08,2018; Serial No.: SN 22/12 EP159
- Sensor-Surface: 4mm (Mechanical Surface Detection)
- Phantom: SAM twin phantom
- Measurement SW: OpenSAR V4_02_35

Configuration/ LTE Band 2 Low-Body-back/Area Scan: Measurement grid: dx=8mm, dy=8mm
Configuration/ LTE Band 2 Low-Body-back/Zoom Scan: Measurement grid: dx=8mm,dy=8mm, dz=5mm;

| | |
|------------------------|-------------------------------|
| Area Scan | surf_sam_plan.txt, h= 5.00 mm |
| Zoom Scan | 5x5x7,dx=8mm dy=8mm dz=5mm |
| Phantom | Validation plane |
| Device Position | Body Back |
| Band | LTE Band 2 |
| Channels | Low |
| Signal | OFDM (Crest factor: 1.0) |



Maximum location: X=9.00, Y=-20.00

SAR Peak: 2.11 W/kg

| | |
|-----------------------|----------|
| SAR 10g (W/Kg) | 0.676012 |
| SAR 1g (W/Kg) | 1.255388 |



Attestation of Global Compliance(Shenzhen)Co.,Ltd.

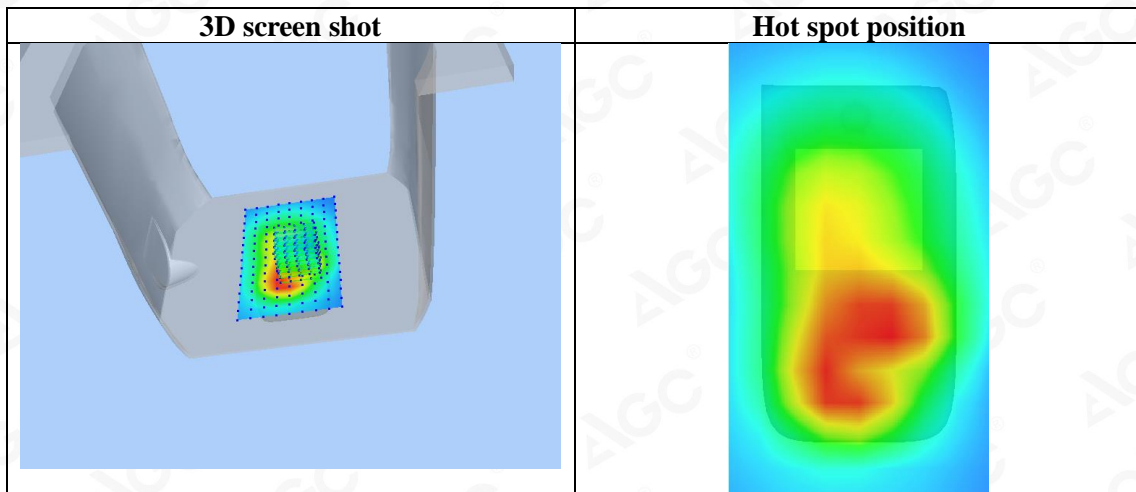
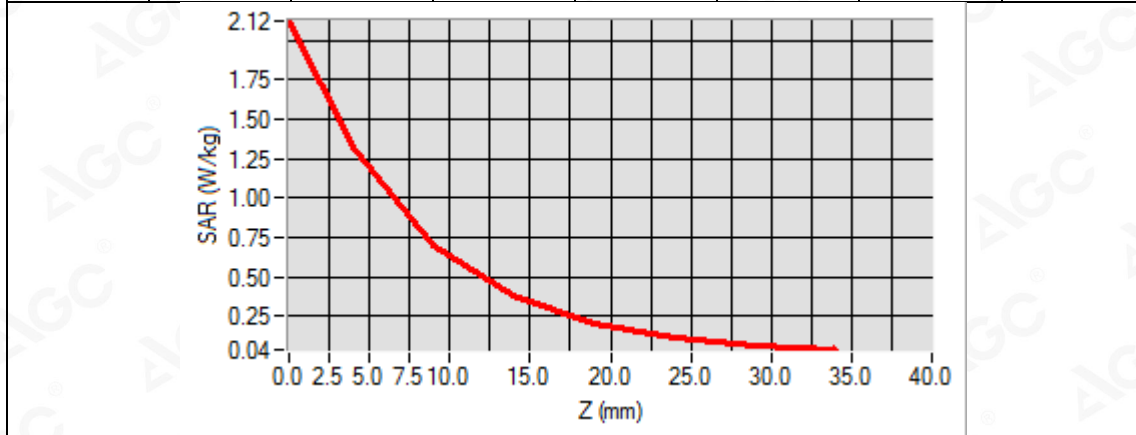
Add: 2/F., Building 2, No.1-4, Chaxi Sanwei Technial Industrial Park, Gushu,
Xixiang, Bao'an District, Shenzhen, Guangdong, China

Tel: +86-755 2523 4088

E-mail: agc@agc-cert.com

Service Hotline:400 089 2118

| Z (mm) | 0.00 | 4.00 | 9.00 | 14.00 | 19.00 | 24.00 | 29.00 |
|------------|--------|--------|--------|--------|--------|--------|--------|
| SAR (W/Kg) | 2.1206 | 1.3211 | 0.7045 | 0.3792 | 0.2067 | 0.1158 | 0.0664 |



Attestation of Global Compliance(Shenzhen)Co.,Ltd.

Add: 2/F., Building 2, No.1-4, Chaxi Sanwei Technial Industrial Park, Gushu, Xixiang, Bao'an District, Shenzhen, Guangdong, China

Tel: +86-755 2523 4088

E-mail: agc@agc-cert.com

Service Hotline:400 089 2118

Test Laboratory: AGC Lab
LTE Band 5 Mid-Body-Back (1 RB#0)
DUT: Portable Translator; Type: HYP10

Date: July 03,2019

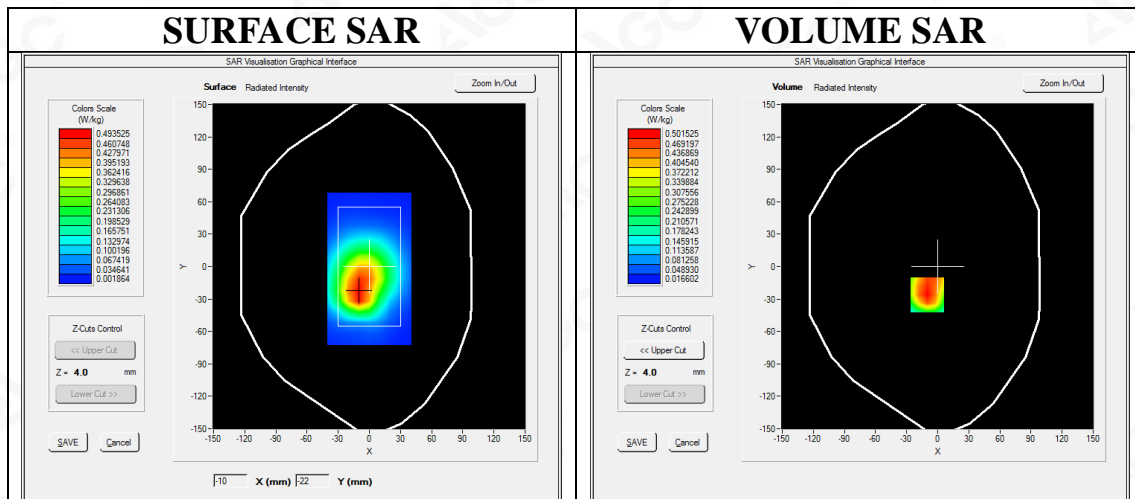
Communication System: LTE; Communication System Band: LTE Band 5; Duty Cycle:1:1; Conv.F=5.49
Frequency:836.5 MHz; Medium parameters used: $f = 835$ MHz; $\sigma = 0.97$ mho/m; $\epsilon_r = 54.06$; $\rho = 1000$ kg/m³ ;
Phantom section: Flat Section
Ambient temperature (°C): 20.9, Liquid temperature (°C): 20.6

SATIMO Configuration:

- Probe: SSE5; Calibrated: Aug. 08,2018; Serial No.: SN 22/12 EP159
- Sensor-Surface: 4mm (Mechanical Surface Detection)
- Phantom: SAM twin phantom
- Measurement SW: OpenSAR V4_02_35

Configuration/ LTE Band 5 Mid-Body-back/Area Scan: Measurement grid: dx=8mm, dy=8mm
Configuration/ LTE Band 5 Mid-Body-back/Zoom Scan: Measurement grid: dx=8mm,dy=8mm, dz=5mm;

| | |
|------------------------|-------------------------------|
| Area Scan | surf_sam_plan.txt, h= 5.00 mm |
| Zoom Scan | 5x5x7,dx=8mm dy=8mm dz=5mm |
| Phantom | Validation plane |
| Device Position | Body Back |
| Band | LTE Band 5 |
| Channels | Middle |
| Signal | OFDM (Crest factor: 1.0) |



Maximum location: X=-10.00, Y=-26.00

SAR Peak: 0.71 W/kg

| | |
|-----------------------|----------|
| SAR 10g (W/Kg) | 0.318430 |
| SAR 1g (W/Kg) | 0.485833 |



Attestation of Global Compliance(Shenzhen)Co.,Ltd.

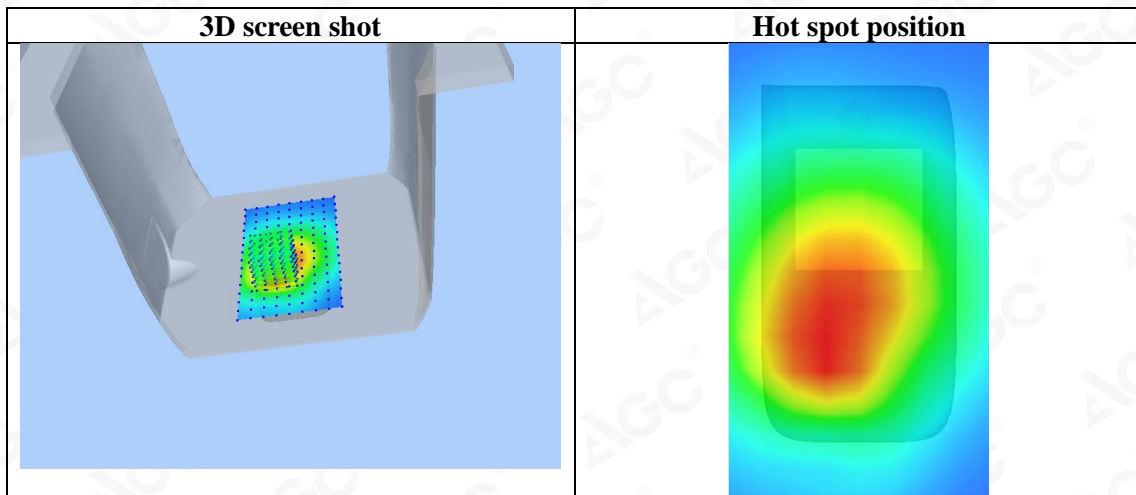
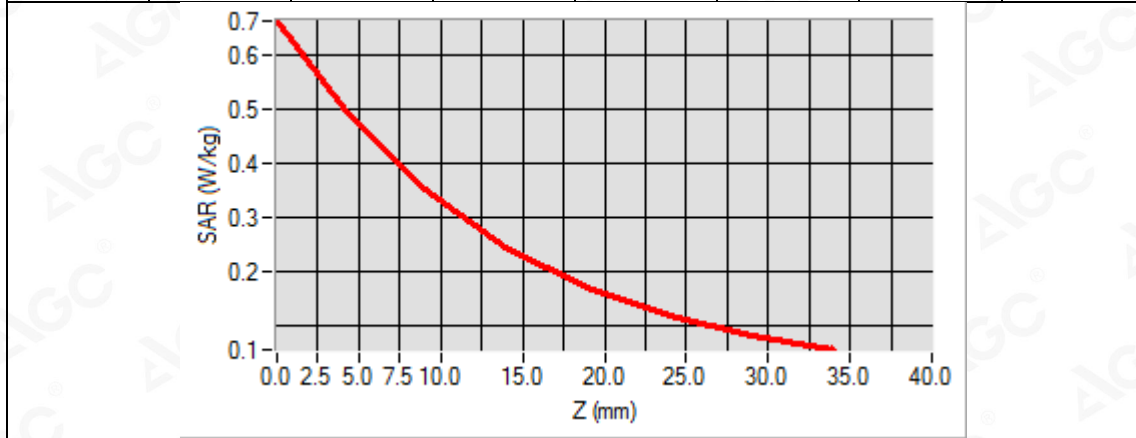
Add: 2/F., Building 2, No.1-4, Chaxi Sanwei Technial Industrial Park, Gushu,
Xixiang, Bao'an District, Shenzhen, Guangdong, China

Tel: +86-755 2523 4088

E-mail: agc@agc-cert.com

Service Hotline:400 089 2118

| Z (mm) | 0.00 | 4.00 | 9.00 | 14.00 | 19.00 | 24.00 | 29.00 |
|------------|--------|--------|--------|--------|--------|--------|--------|
| SAR (W/Kg) | 0.6623 | 0.5015 | 0.3506 | 0.2454 | 0.1701 | 0.1176 | 0.0824 |



Attestation of Global Compliance(Shenzhen)Co.,Ltd.

Add: 2/F., Building 2, No.1-4, Chaxi Sanwei Technial Industrial Park, Gushu,
Xixiang, Bao'an District, Shenzhen, Guangdong, China

Tel: +86-755 2523 4088

E-mail: agc@agc-cert.com

Service Hotline:400 089 2118

Test Laboratory: AGC Lab
LTE Band 7 Low-Body-Back (1RB#0)
DUT: Portable Translator; Type: HYP10

Date: July 16,2019

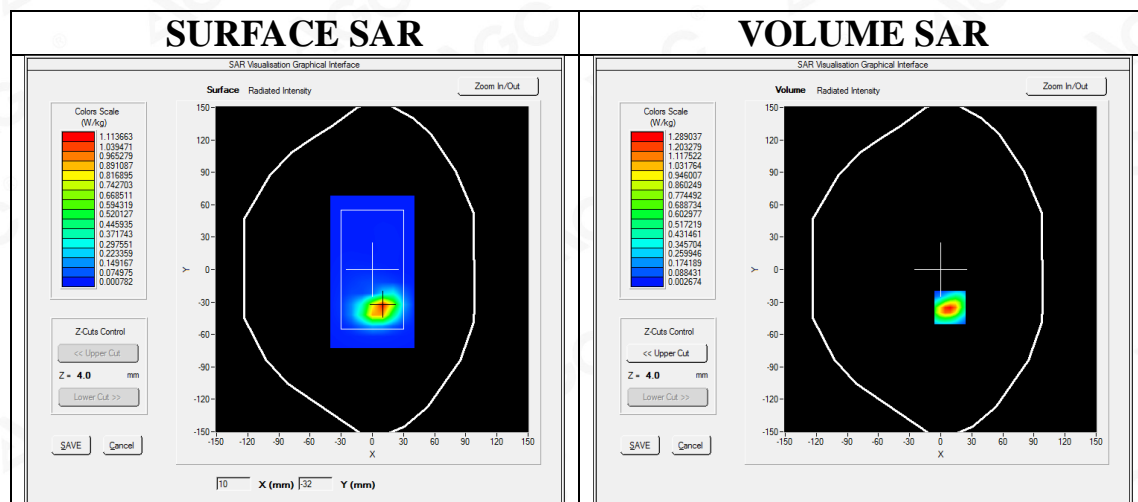
Communication System: LTE; Communication System Band: LTE Band 7; Duty Cycle:1:1; Conv.F=4.68
Frequency: 2510MHz; Medium parameters used: $f = 2600$ MHz; $\sigma = 2.10$ mho/m; $\epsilon_r = 54.23$; $\rho = 1000$ kg/m³ ;
Phantom section: Flat Section
Ambient temperature (°C): 20.9, Liquid temperature (°C): 20.6

SATIMO Configuration:

- Probe: SSE5; Calibrated: Aug. 08,2018; Serial No.: SN 22/12 EP159
- Sensor-Surface: 4mm (Mechanical Surface Detection)
- Phantom: SAM twin phantom
- Measurement SW: OpenSAR V4_02_35

Configuration/ LTE BAND 7 Low-Body-Back /Area Scan: Measurement grid: dx=10mm, y=10mm
Configuration/ LTE BAND 7 Low-Body-Back /Zoom Scan: Measurement grid: dx=5mm, dy=5mm, dz=5mm

| | |
|------------------------|-------------------------------|
| Area Scan | surf_sam_plan.txt, h= 5.00 mm |
| ZoomScan | 7x7x7,dx=5mm dy=5mm dz=5mm |
| Phantom | Validation plane |
| Device Position | Body Back |
| Band | LTE BAND 7 |
| Channels | Low |
| Signal | OFDM (Crest factor: 1.0) |



Maximum location: X=9.00, Y=-35.00
SAR Peak: 2.30 W/kg

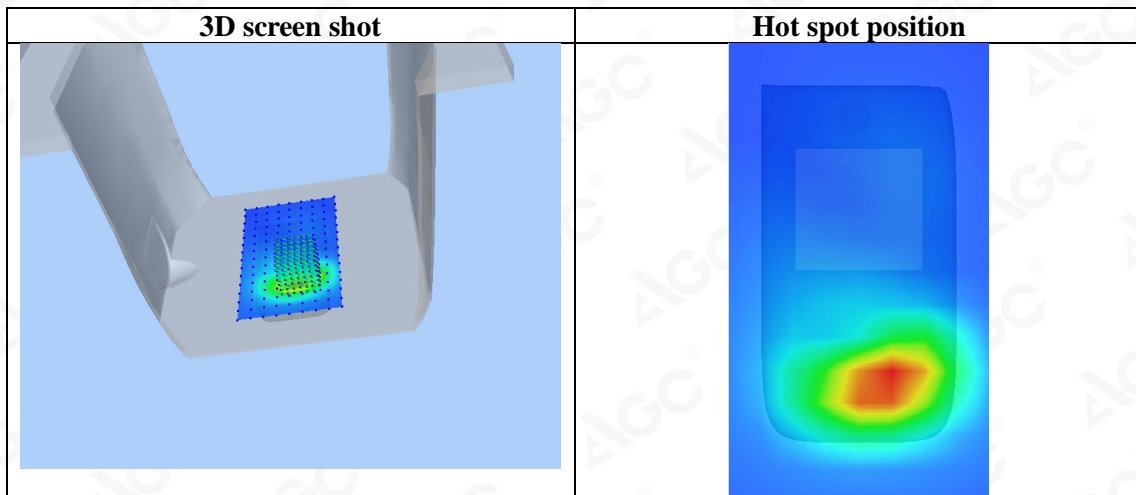
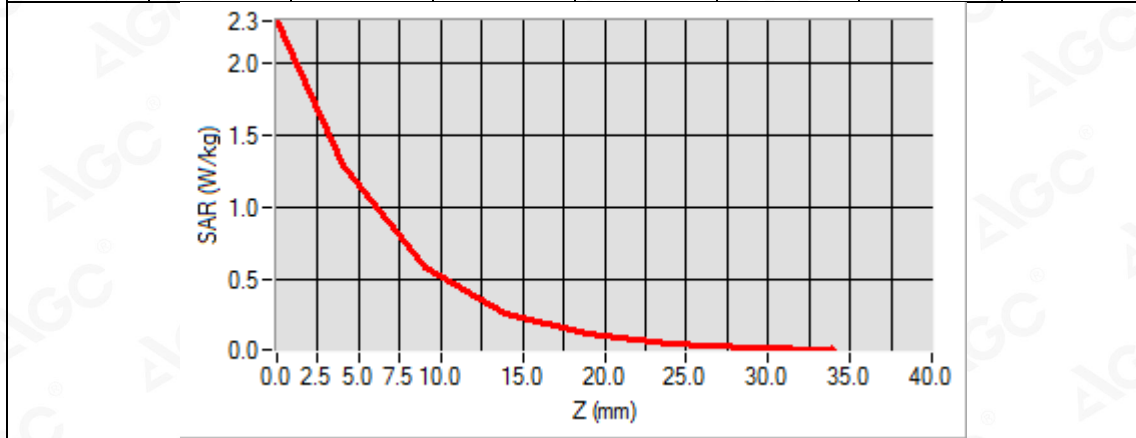
| | |
|-----------------------|----------|
| SAR 10g (W/Kg) | 0.473929 |
| SAR 1g (W/Kg) | 1.162359 |



Attestation of Global Compliance(Shenzhen)Co.,Ltd.

Add: 2/F., Building 2, No.1-4, Chaxi Sanwei Technial Industrial Park, Gushu,
Xixiang, Bao'an District, Shenzhen, Guangdong, China
Tel: +86-755 2523 4088 E-mail: agc@agc-cert.com Service Hotline:400 089 2118

| Z (mm) | 0.00 | 4.00 | 9.00 | 14.00 | 19.00 | 24.00 | 29.00 |
|------------|--------|--------|--------|--------|--------|--------|--------|
| SAR (W/Kg) | 2.2837 | 1.2890 | 0.5816 | 0.2647 | 0.1245 | 0.0592 | 0.0285 |



Attestation of Global Compliance(Shenzhen)Co.,Ltd.

Add: 2/F., Building 2, No.1-4, Chaxi Sanwei Technial Industrial Park, Gushu, Xixiang, Bao'an District, Shenzhen, Guangdong, China

Tel: +86-755 2523 4088

E-mail: agc@agc-cert.com

Service Hotline:400 089 2118

Test Laboratory: AGC Lab
LTE Band 12 Mid-Body-Back (1 RB#0)
DUT: Portable Translator; Type: HYP10

Date: July 16,2019

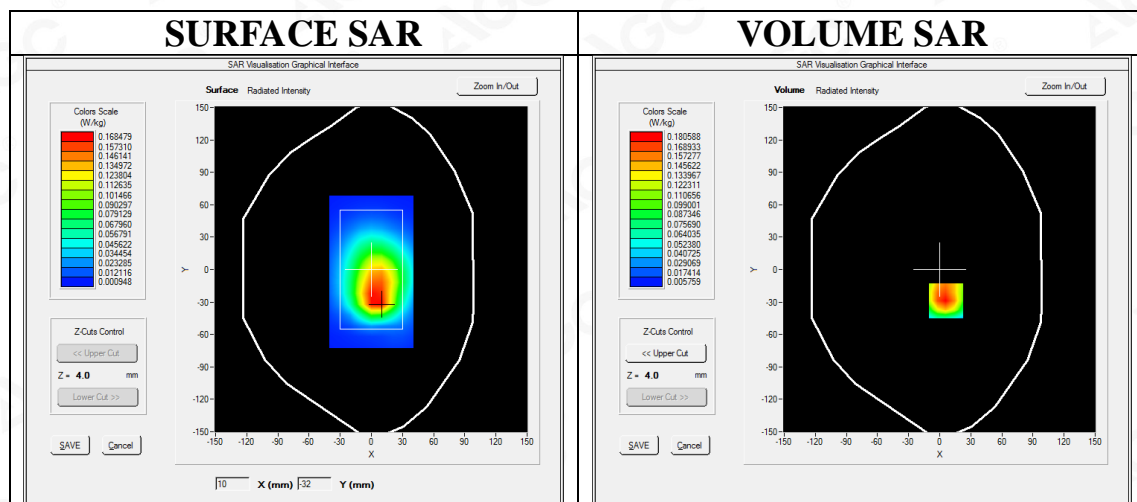
Communication System: LTE; Communication System Band: LTE Band 12; Duty Cycle:1:1; Conv.F=5.40;
Frequency: 707.5 MHz; Medium parameters used: $f = 750$ MHz; $\sigma = 0.93$ mho/m; $\epsilon r = 56.38$; $\rho = 1000$ kg/m³ ;
Phantom section: Flat Section
Ambient temperature (°C): 20.9, Liquid temperature (°C): 20.7

SATIMO Configuration:

- Probe: SSE5; Calibrated: Aug. 08,2018; Serial No.: SN 22/12 EP159
- Sensor-Surface: 4mm (Mechanical Surface Detection)
- Phantom: SAM twin phantom
- Measurement SW: OpenSAR V4_02_35

Configuration/ LTE Band 12 Mid-Body-back/Area Scan: Measurement grid: dx=8mm, dy=8mm
Configuration/ LTE Band 12 Mid-Body-back/Zoom Scan: Measurement grid: dx=8mm,dy=8mm, dz=5mm;

| | |
|------------------------|-------------------------------|
| Area Scan | surf_sam_plan.txt, h= 5.00 mm |
| Zoom Scan | 5x5x7,dx=8mm dy=8mm dz=5mm |
| Phantom | Validation plane |
| Device Position | Body Back |
| Band | LTE Band 12 |
| Channels | Middle |
| Signal | OFDM (Crest factor: 1.0) |



Maximum location: X=6.00, Y=-29.00

SAR Peak: 0.26 W/kg

| | |
|-----------------------|----------|
| SAR 10g (W/Kg) | 0.112426 |
| SAR 1g (W/Kg) | 0.177943 |



Attestation of Global Compliance(Shenzhen)Co.,Ltd.

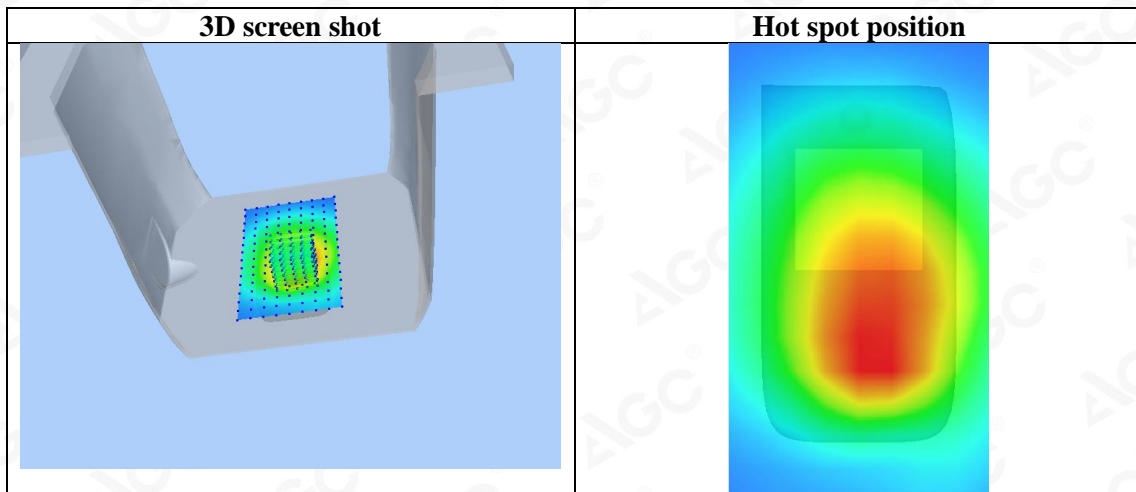
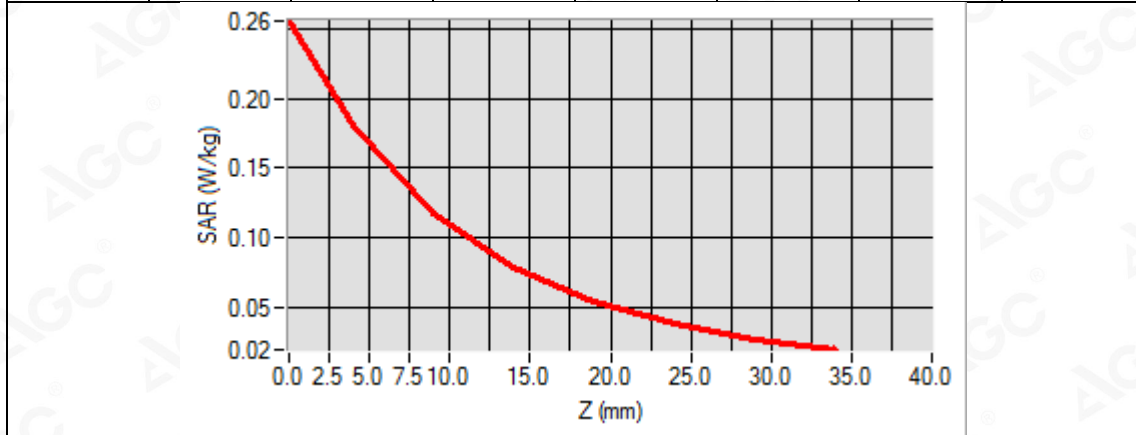
Add: 2/F., Building 2, No.1-4, Chaxi Sanwei Technial Industrial Park, Gushu,
Xixiang, Bao'an District, Shenzhen, Guangdong, China

Tel: +86-755 2523 4088

E-mail: agc@agc-cert.com

Service Hotline:400 089 2118

| Z (mm) | 0.00 | 4.00 | 9.00 | 14.00 | 19.00 | 24.00 | 29.00 |
|------------|--------|--------|--------|--------|--------|--------|--------|
| SAR (W/Kg) | 0.2562 | 0.1806 | 0.1172 | 0.0786 | 0.0535 | 0.0375 | 0.0263 |



Attestation of Global Compliance(Shenzhen)Co.,Ltd.

Add: 2/F., Building 2, No.1-4, Chaxi Sanwei Technial Industrial Park, Gushu, Xixiang, Bao'an District, Shenzhen, Guangdong, China

Tel: +86-755 2523 4088

E-mail: agc@agc-cert.com

Service Hotline:400 089 2118

Test Laboratory: AGC Lab
LTE Band 17 Mid-Body-Back (1 RB#0)
DUT: Portable Translator; Type: HYP10

Date: July 16,2019

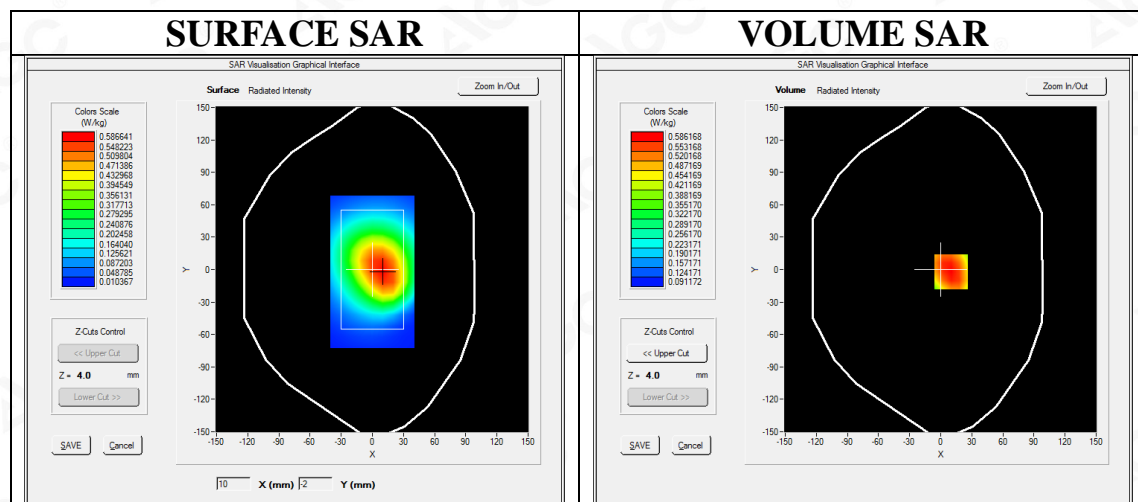
Communication System: LTE; Communication System Band: LTE Band 17; Duty Cycle:1:1; Conv.F=5.40;
Frequency: 710 MHz; Medium parameters used: $f = 750 \text{ MHz}$; $\sigma = 0.94 \text{ mho/m}$; $\epsilon_r = 56.13$; $\rho = 1000 \text{ kg/m}^3$;
Phantom section: Flat Section
Ambient temperature ($^{\circ}\text{C}$): 20.9, Liquid temperature ($^{\circ}\text{C}$): 20.7

SATIMO Configuration:

- Probe: SSE5; Calibrated: Aug. 08,2018; Serial No.: SN 22/12 EP159
- Sensor-Surface: 4mm (Mechanical Surface Detection)
- Phantom: SAM twin phantom
- Measurement SW: OpenSAR V4_02_35

Configuration/ LTE Band 17 Mid-Body-back/Area Scan: Measurement grid: dx=8mm, dy=8mm
Configuration/ LTE Band 17 Mid-Body-back/Zoom Scan: Measurement grid: dx=8mm,dy=8mm, dz=5mm;

| | |
|------------------------|-------------------------------|
| Area Scan | surf_sam_plan.txt, h= 5.00 mm |
| Zoom Scan | 5x5x7,dx=8mm dy=8mm dz=5mm |
| Phantom | Validation plane |
| Device Position | Body Back |
| Band | LTE Band 17 |
| Channels | Middle |
| Signal | OFDM (Crest factor: 1.0) |



Maximum location: X=10.00, Y=-2.00

SAR Peak: 0.70 W/kg

| | |
|-----------------------|----------|
| SAR 10g (W/Kg) | 0.459047 |
| SAR 1g (W/Kg) | 0.600263 |



Attestation of Global Compliance(Shenzhen)Co.,Ltd.

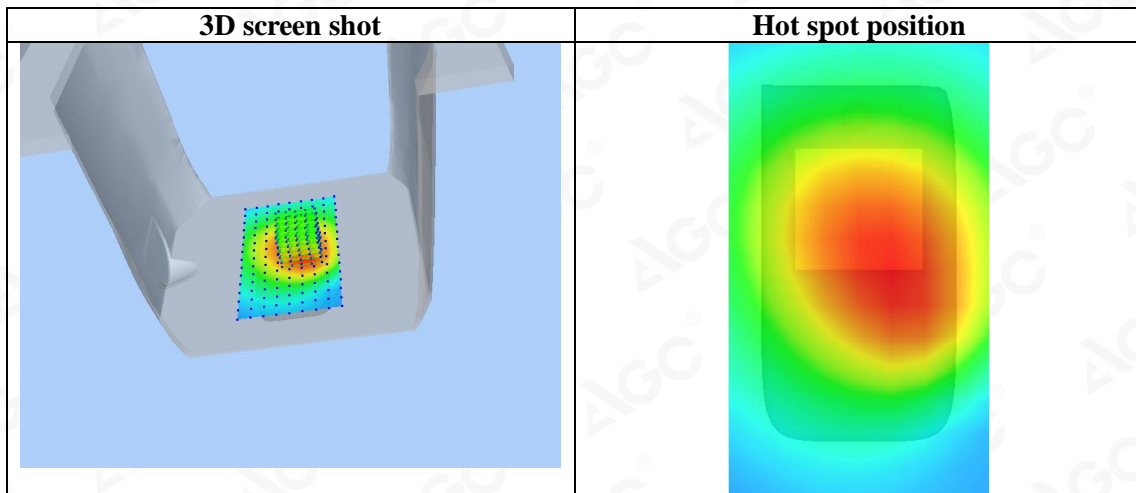
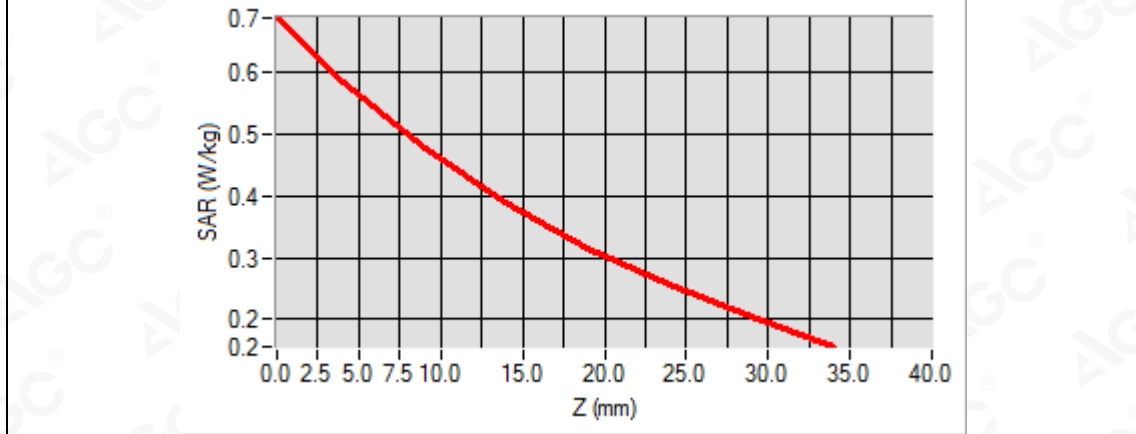
Add: 2/F., Building 2, No.1-4, Chaxi Sanwei Technial Industrial Park, Gushu,
Xixiang, Bao'an District, Shenzhen, Guangdong, China

Tel: +86-755 2523 4088

E-mail: agc@agc-cert.com

Service Hotline:400 089 2118

| Z (mm) | 0.00 | 4.00 | 9.00 | 14.00 | 19.00 | 24.00 | 29.00 |
|------------|--------|--------|--------|--------|--------|--------|--------|
| SAR (W/Kg) | 0.6888 | 0.5862 | 0.4778 | 0.3910 | 0.3163 | 0.2548 | 0.2026 |



Attestation of Global Compliance(Shenzhen)Co.,Ltd.

Add: 2/F., Building 2, No.1-4, Chaxi Sanwei Technial Industrial Park, Gushu, Xixiang, Bao'an District, Shenzhen, Guangdong, China

Tel: +86-755 2523 4088

E-mail: agc@agc-cert.com

Service Hotline:400 089 2118

Test Laboratory: AGC Lab
LTE Band 40 Mid-Body-Back (1 RB#0)
DUT: Portable Translator; Type: HYP10

Date: July 13,2019

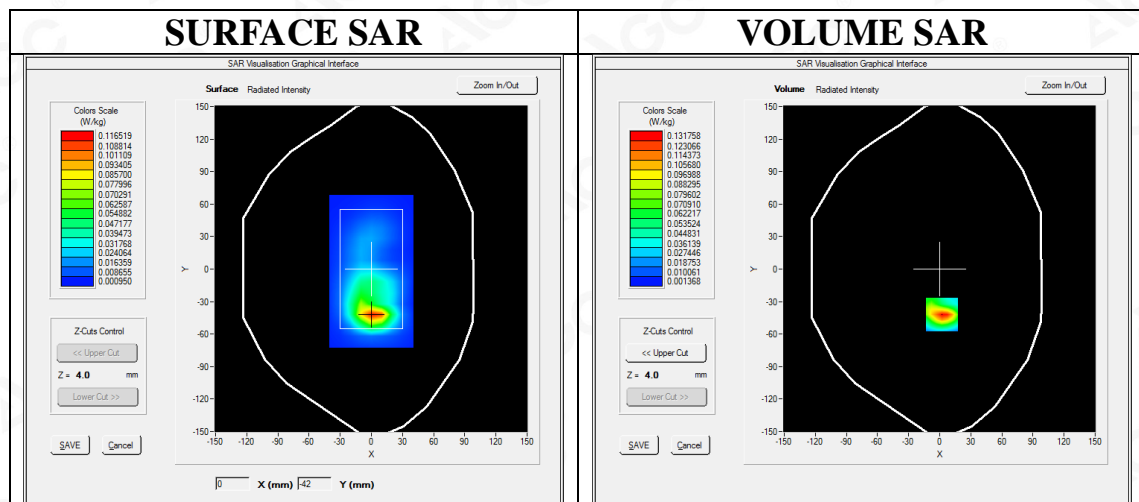
Communication System: LTE; Communication System Band: LTE Band 40; Duty Cycle:1:1.58; Conv.F=5.31
Frequency: 2350 MHz; Medium parameters used: $f = 2300$ MHz; $\sigma = 1.82$ mho/m; $\epsilon_r = 51.62$; $\rho = 1000$ kg/m³ ;
Phantom section: Flat Section
Ambient temperature (°C): 22.2 Liquid temperature (°C): 21.9

SATIMO Configuration:

- Probe: SSE5; Calibrated: Aug. 08,2018; Serial No.: SN 22/12 EP159
- Sensor-Surface: 4mm (Mechanical Surface Detection)
- Phantom: SAM twin phantom
- Measurement SW: OpenSAR V4_02_35

Configuration/ LTE Band 40 Mid-Body-Back/Area Scan: Measurement grid: dx=8mm, dy=8mm
Configuration/ LTE Band 40 Mid-Body-Back/Zoom Scan: Measurement grid: dx=8mm, dy=8mm, dz=5mm;

| | |
|------------------------|-------------------------------|
| Area Scan | surf_sam_plan.txt, h= 5.00 mm |
| Zoom Scan | 7x7x7,dx=5mm dy=5mm dz=5mm |
| Phantom | Validation plane |
| Device Position | Body Back |
| Band | LTE Band 40 |
| Channels | Middle |
| Signal | Crest factor: 1.58 |



Maximum location: X=2.00, Y=-42.00

SAR Peak: 0.21 W/kg

| | |
|-----------------------|----------|
| SAR 10g (W/Kg) | 0.053191 |
| SAR 1g (W/Kg) | 0.115172 |



Attestation of Global Compliance(Shenzhen)Co.,Ltd.

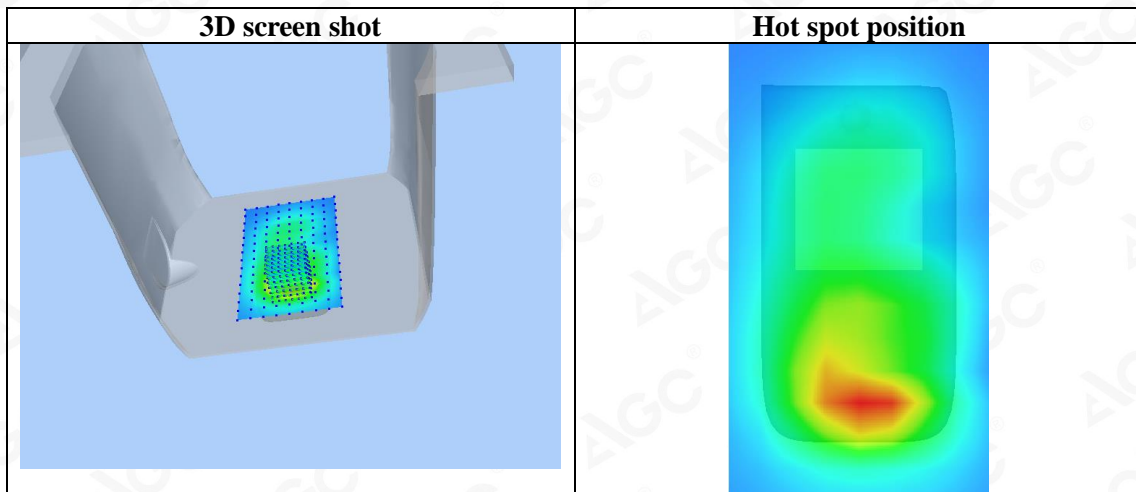
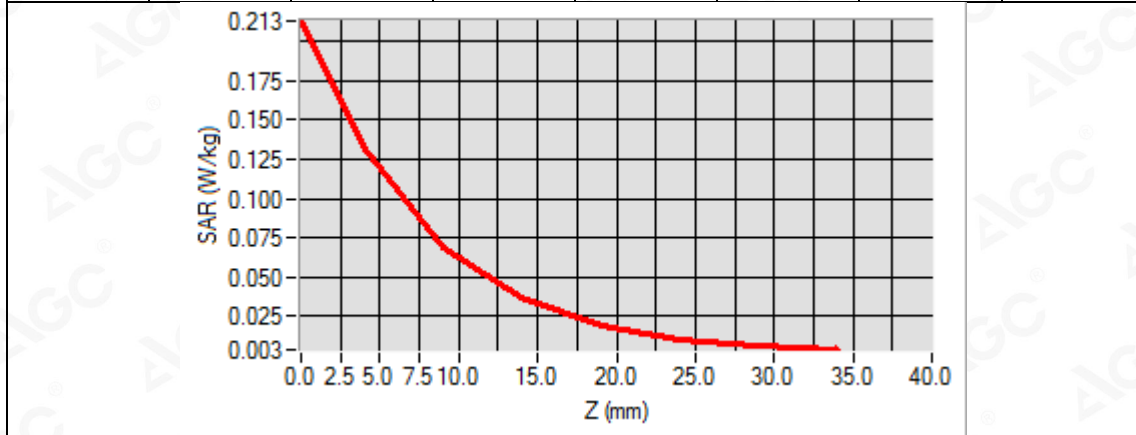
Add: 2/F., Building 2, No.1-4, Chaxi Sanwei Technial Industrial Park, Gushu,
Xixiang, Bao'an District, Shenzhen, Guangdong, China

Tel: +86-755 2523 4088

E-mail: agc@agc-cert.com

Service Hotline:400 089 2118

| Z (mm) | 0.00 | 4.00 | 9.00 | 14.00 | 19.00 | 24.00 | 29.00 |
|------------|--------|--------|--------|--------|--------|--------|--------|
| SAR (W/Kg) | 0.2133 | 0.1318 | 0.0692 | 0.0366 | 0.0193 | 0.0103 | 0.0055 |



Attestation of Global Compliance(Shenzhen)Co.,Ltd.

Add: 2/F., Building 2, No.1-4, Chaxi Sanwei Technical Industrial Park, Gushu, Xixiang, Bao'an District, Shenzhen, Guangdong, China

Tel: +86-755 2523 4088

E-mail: agc@agc-cert.com

Service Hotline:400 089 2118

Test Laboratory: AGC Lab
LTE Band 41 Mid-Body-Back(1RB#0)
DUT: Portable Translator; Type: HYP10

Date: July 16,2019

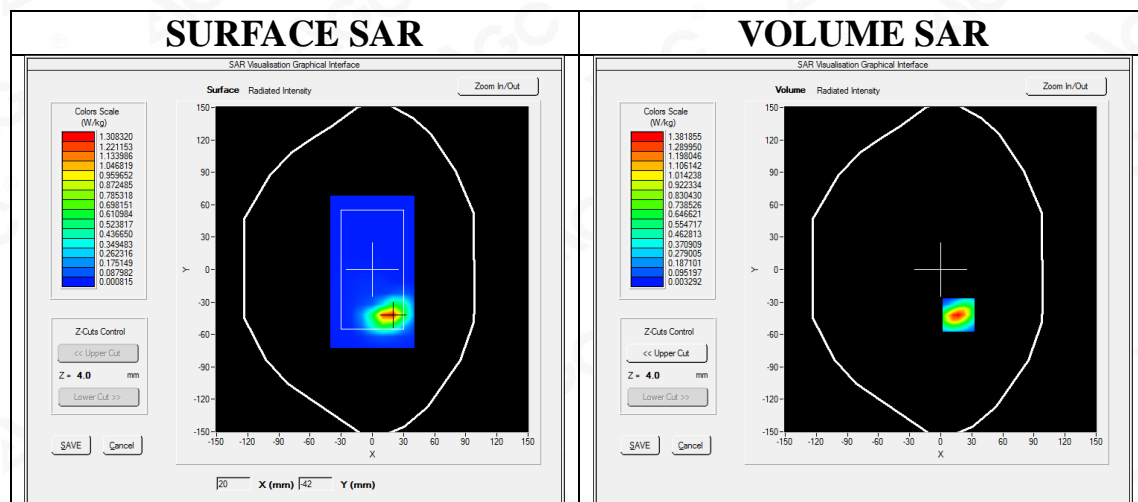
Communication System: LTE; Communication System Band: LTE Band 41; Duty Cycle:1:1.58; Conv.F=4.68
Frequency: 2593MHz; Medium parameters used: $f = 2600$ MHz; $\sigma = 2.15$ mho/m; $\epsilon_r = 52.67$; $\rho = 1000$ kg/m³ ;
Phantom section: Flat Section
Ambient temperature (°C): 20.9, Liquid temperature (°C): 20.6

SATIMO Configuration:

- Probe: SSE5; Calibrated: Aug. 08,2018; Serial No.: SN 22/12 EP159
- Sensor-Surface: 4mm (Mechanical Surface Detection)
- Phantom: SAM twin phantom
- Measurement SW: OpenSAR V4_02_35

Configuration/ LTE BAND 41 Mid-Body-Back /Area Scan: Measurement grid: dx=10mm, y=10mm
Configuration/ LTE BAND 41 Mid-Body-Back /Zoom Scan: Measurement grid: dx=5mm, dy=5mm, dz=5mm

| | |
|------------------------|-------------------------------|
| Area Scan | surf_sam_plan.txt, h= 5.00 mm |
| ZoomScan | 7x7x7,dx=5mm dy=5mm dz=5mm |
| Phantom | Validation plane |
| Device Position | Body Back |
| Band | LTE BAND 41 |
| Channels | Middle |
| Signal | OFDM (Crest factor: 1.58) |



Maximum location: X=17.00, Y=-42.00

SAR Peak: 2.26 W/kg

| | |
|-----------------------|----------|
| SAR 10g (W/Kg) | 0.529402 |
| SAR 1g (W/Kg) | 1.218861 |



Attestation of Global Compliance(Shenzhen)Co.,Ltd.

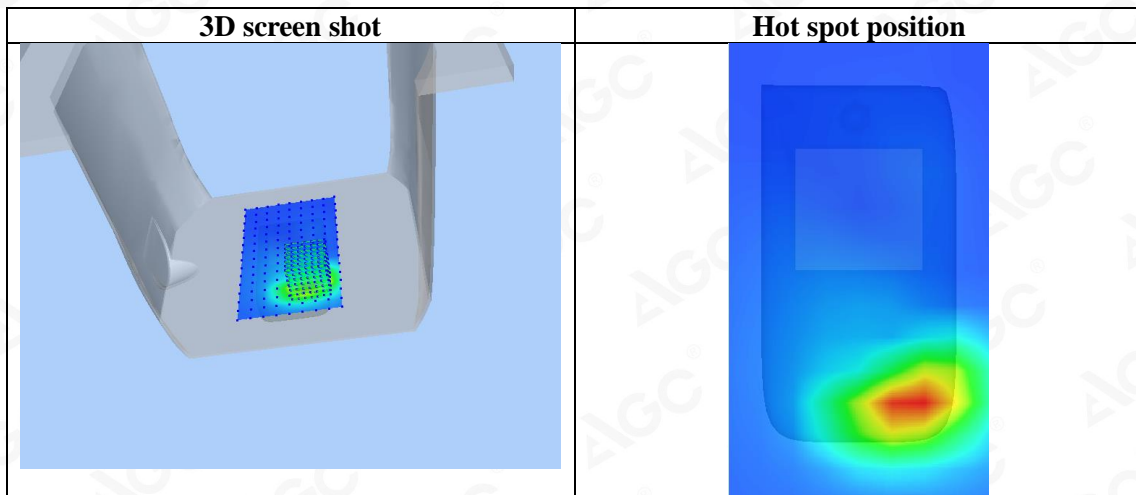
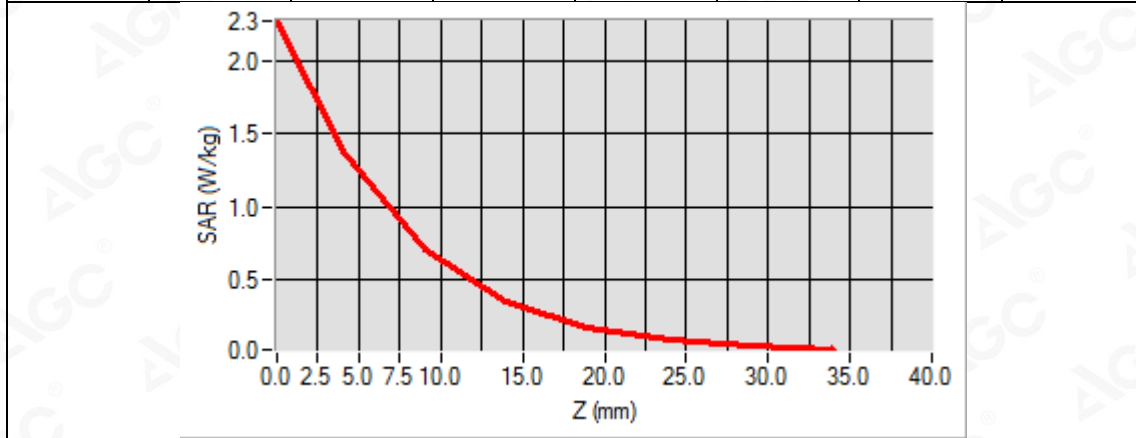
Add: 2/F., Building 2, No.1-4, Chaxi Sanwei Technial Industrial Park, Gushu,
Xixiang, Bao'an District, Shenzhen, Guangdong, China

Tel: +86-755 2523 4088

E-mail: agc@agc-cert.com

Service Hotline:400 089 2118

| Z (mm) | 0.00 | 4.00 | 9.00 | 14.00 | 19.00 | 24.00 | 29.00 |
|------------|--------|--------|--------|--------|--------|--------|--------|
| SAR (W/Kg) | 2.2671 | 1.3819 | 0.7051 | 0.3502 | 0.1742 | 0.0856 | 0.0424 |



Attestation of Global Compliance(Shenzhen)Co.,Ltd.

Add: 2/F., Building 2, No.1-4, Chaxi Sanwei Technial Industrial Park, Gushu, Xixiang, Bao'an District, Shenzhen, Guangdong, China

Tel: +86-755 2523 4088

E-mail: agc@agc-cert.com

Service Hotline:400 089 2118

WIFI MODE

Test Laboratory: AGC Lab
802.11b Mid-Body-Worn- Back
DUT: Portable Translator; Type: HYP10

Date: July 09,2019

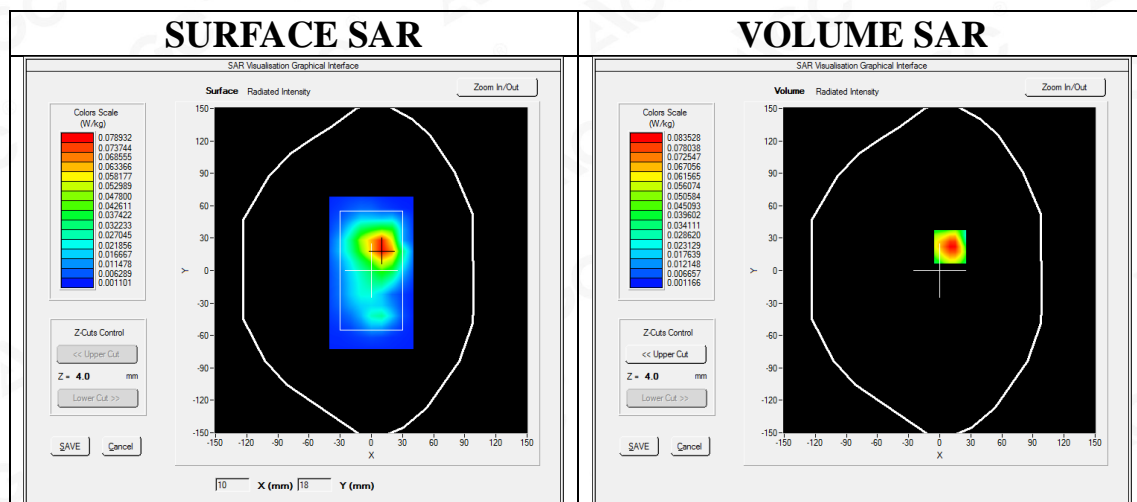
Communication System: Wi-Fi; Communication System Band: 802.11b; Duty Cycle: 1:1; Conv.F=5.04;
Frequency: 2437 MHz; Medium parameters used: $f = 2450$ MHz; $\sigma = 1.91$ mho/m; $\epsilon_r = 53.71$; $\rho = 1000$ kg/m³ ;
Phantom section: Flat Section
Ambient temperature (°C):20.6, Liquid temperature (°C): 20.3

SATIMO Configuration:

- Probe: SSE5; Calibrated: Aug. 08,2018; Serial No.: SN 22/12 EP159
- Sensor-Surface: 4mm (Mechanical Surface Detection)
- Phantom: SAM twin phantom
- Measurement SW: OpenSAR V4_02_35

Configuration/802.11b Mid- Body- Back /Area Scan: Measurement grid: dx=8mm, dy=8mm
Configuration/802.11b Mid- Body- Back /Zoom Scan: Measurement grid: dx=5mm,dy=5mm, dz=5mm;

| | |
|-----------------|-------------------------------|
| Area Scan | surf_sam_plan.txt, h= 5.00 mm |
| ZoomScan | 7x7x7,dx=5mm dy=5mm dz=5mm |
| Phantom | Validation plane |
| Device Position | Body Back |
| Band | 2450MHz |
| Channels | Middle |
| Signal | Crest factor: 1.0 |



Maximum location: X=10.00, Y=22.00
SAR Peak: 0.14 W/kg

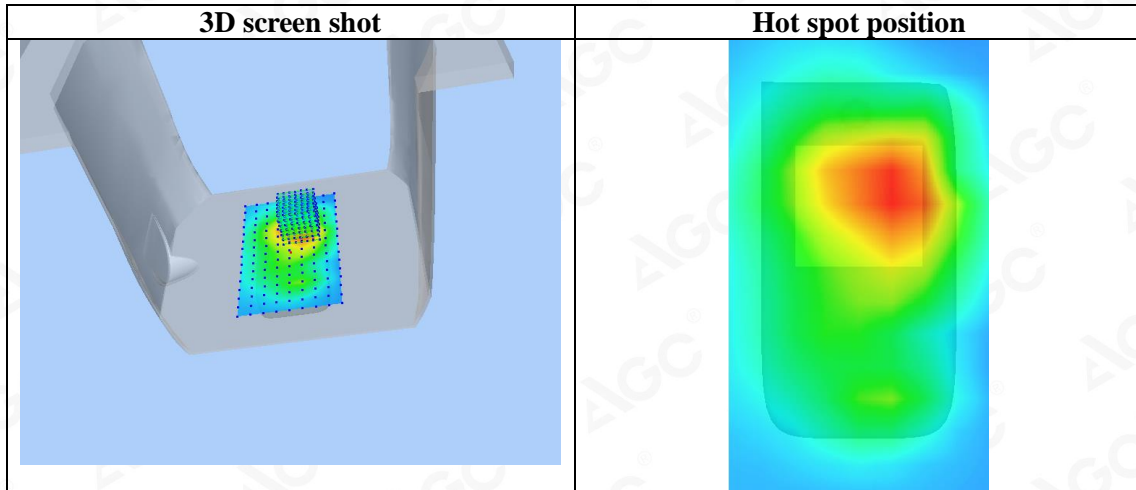
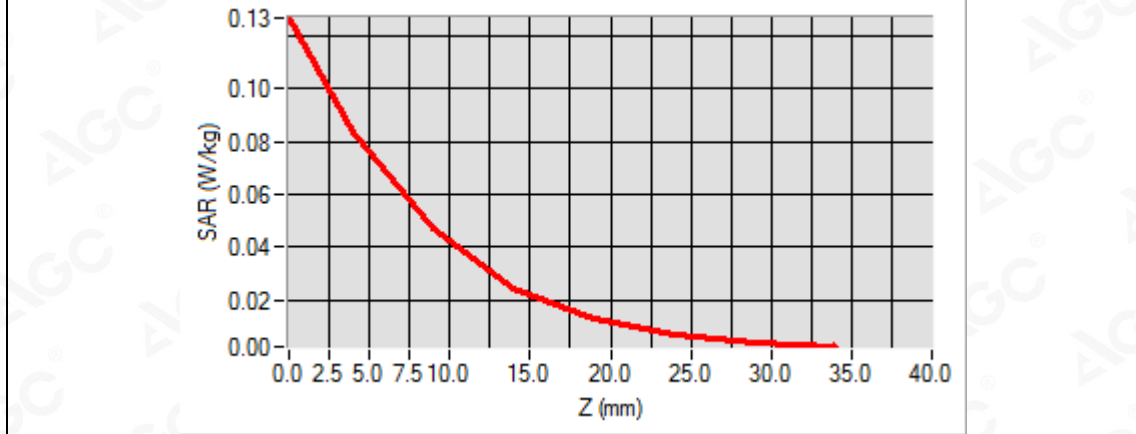
| | |
|----------------|----------|
| SAR 10g (W/Kg) | 0.040834 |
| SAR 1g (W/Kg) | 0.078192 |



Attestation of Global Compliance(Shenzhen)Co.,Ltd.

Add: 2/F., Building 2, No.1-4, Chaxi Sanwei Technial Industrial Park, Gushu,
Xixiang, Bao'an District, Shenzhen, Guangdong, China
Tel: +86-755 2523 4088 E-mail: agc@agc-cert.com Service Hotline:400 089 2118

| Z (mm) | 0.00 | 4.00 | 9.00 | 14.00 | 19.00 | 24.00 | 29.00 |
|------------|--------|--------|--------|--------|--------|--------|--------|
| SAR (W/Kg) | 0.1270 | 0.0835 | 0.0471 | 0.0245 | 0.0128 | 0.0066 | 0.0039 |



Attestation of Global Compliance(Shenzhen)Co.,Ltd.

Add: 2/F., Building 2, No.1-4, Chaxi Sanwei Technial Industrial Park, Gushu, Xixiang, Bao'an District, Shenzhen, Guangdong, China

Tel: +86-755 2523 4088

E-mail: agc@agc-cert.com

Service Hotline:400 089 2118

Repeated SAR
Test Laboratory: AGC Lab
GPRS 1900 Mid-Body-Back (3up)
DUT: Portable Translator; Type: HYP10

Date: July 17,2019

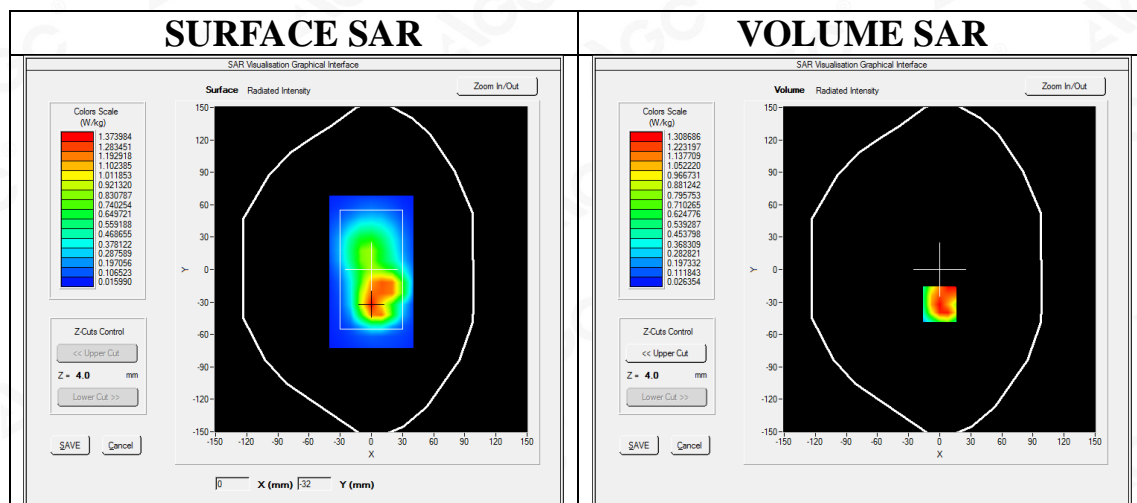
Communication System: GPRS-3Slot; Communication System Band: PCS 1900; Duty Cycle: 1:2.7; Conv.F=5.39;
 Frequency: 1880 MHz; Medium parameters used: $f = 1850$ MHz; $\sigma = 1.50$ mho/m; $\epsilon_r = 53.17$; $\rho = 1000$ kg/m³ ;
 Phantom section: Flat Section
 Ambient temperature (°C): 21.8, Liquid temperature (°C): 21.5

SATIMO Configuration:

- Probe: SSE5; Calibrated: Aug. 08,2018; Serial No.: SN 22/12 EP159
- Sensor-Surface: 4mm (Mechanical Surface Detection)
- Phantom: SAM twin phantom
- Measurement SW: OpenSAR V4_02_35

Configuration/GPRS1900 Mid-Body-Back/Area Scan: Measurement grid: dx=8mm, dy=8mm
Configuration/GPRS1900 Mid-Body-Back/Zoom Scan: Measurement grid: dx=8mm,dy=8mm, dz=5mm;

| | |
|------------------------|-------------------------------------|
| Area Scan | surf_sam_plan.txt, h= 5.00 mm |
| Zoom Scan | 5x5x7,dx=8mm dy=8mm dz=5mm,Complete |
| Phantom | Validation plane |
| Device Position | Body Back |
| Band | PCS 1900 |
| Channels | Middle |
| Signal | TDMA (Crest factor: 2.7) |



Maximum location: X=0.00, Y=-32.00
SAR Peak: 1.99 W/kg

| | |
|-----------------------|----------|
| SAR 10g (W/Kg) | 0.697164 |
| SAR 1g (W/Kg) | 1.268168 |

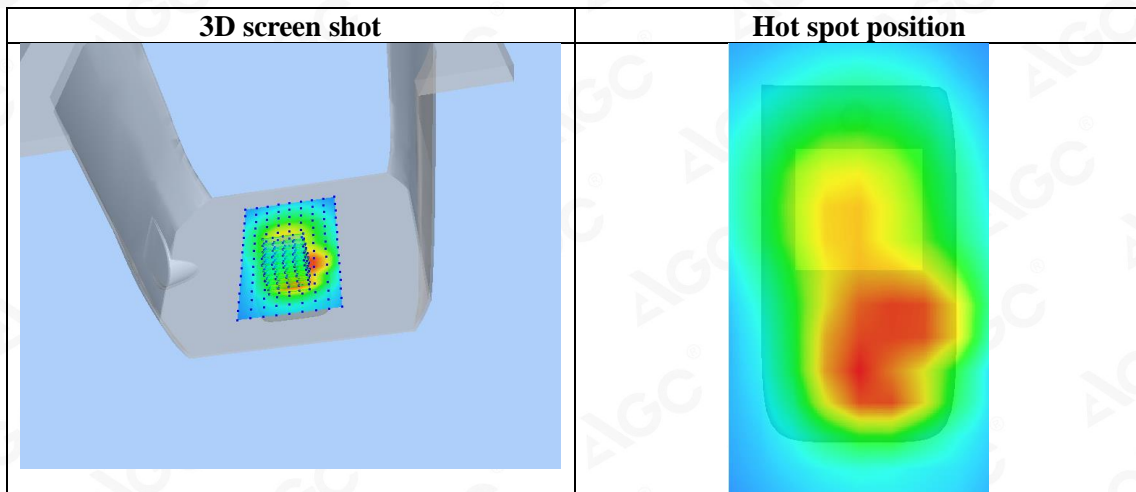
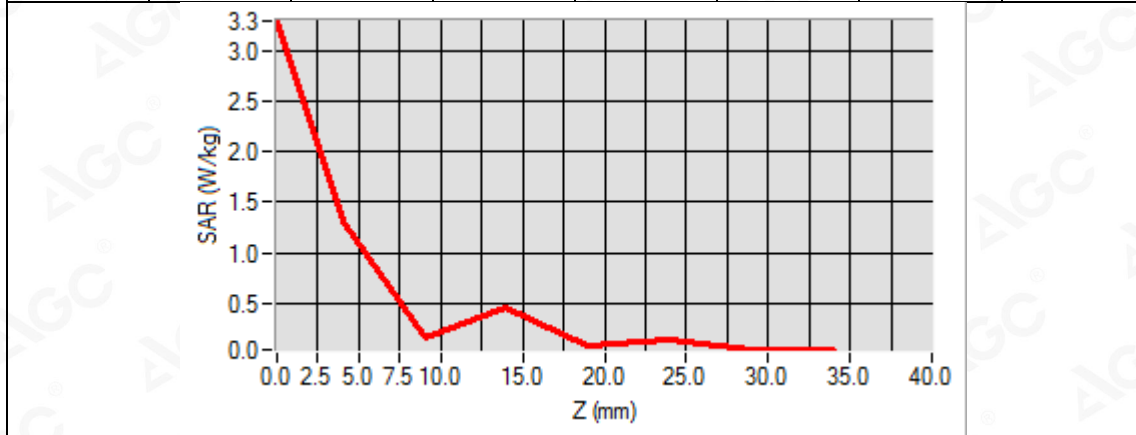


Attestation of Global Compliance(Shenzhen)Co.,Ltd.

Add: 2/F., Building 2, No.1-4, Chaxi Sanwei Technial Industrial Park, Gushu,
 Xixiang, Bao'an District, Shenzhen, Guangdong, China

Tel: +86-755 2523 4088 E-mail: agc@agc-cert.com Service Hotline:400 089 2118

| Z (mm) | 0.00 | 4.00 | 9.00 | 14.00 | 19.00 | 24.00 | 29.00 |
|------------|--------|--------|--------|--------|--------|--------|--------|
| SAR (W/Kg) | 3.2914 | 1.3087 | 0.1551 | 0.4633 | 0.0797 | 0.1431 | 0.0387 |



Attestation of Global Compliance(Shenzhen)Co.,Ltd.

Add: 2/F., Building 2, No.1-4, Chaxi Sanwei Technial Industrial Park, Gushu, Xixiang, Bao'an District, Shenzhen, Guangdong, China

Tel: +86-755 2523 4088

E-mail: agc@agc-cert.com

Service Hotline:400 089 2118

Test Laboratory: AGC Lab
WCDMA Band II Mid-Body-Towards Grounds (RMC 12.2kbps)
DUT: Portable Translator; Type: HYP10

Date: July 17,2019

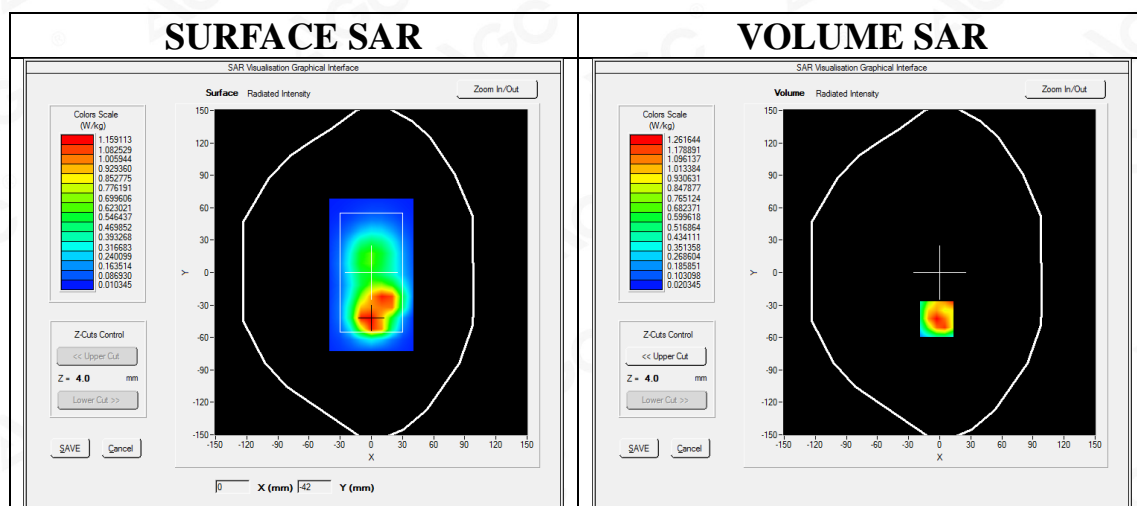
Communication System: UMTS; Communication System Band: Band II UTRA/FDD ;Duty Cycle:1:1; Conv.F=5.39;
Frequency: 1880 MHz; Medium parameters used: $f = 1850$ MHz; $\sigma = 1.50$ mho/m; $\epsilon_r = 53.17$; $\rho = 1000$ kg/m³ ;
Phantom section: Flat Section
Ambient temperature (°C): 21.8, Liquid temperature (°C): 21.5

SATIMO Configuration:

- Probe: SSE5; Calibrated: Aug. 08,2018; Serial No.: SN 22/12 EP159
- Sensor-Surface: 4mm (Mechanical Surface Detection)
- Phantom: SAM twin phantom
- Measurement SW: OpenSAR V4_02_35

Configuration/ WCDMA band II Mid-Body-back/Area Scan: Measurement grid: dx=8mm, dy=8mm
Configuration/ WCDMA band II Mid-Body-back/Zoom Scan: Measurement grid: dx=8mm,dy=8mm, dz=5mm;

| | |
|------------------------|-------------------------------------|
| Area Scan | surf_sam_plan.txt, h= 5.00 mm |
| ZoomScan | 5x5x7,dx=8mm dy=8mm dz=5mm,Complete |
| Phantom | Validation plane |
| Device Position | Body Back |
| Band | WCDMA band II |
| Channels | Middle |
| Signal | CDMA (Crest factor: 1.0) |



Maximum location: X=-3.00, Y=-43.00

SAR Peak: 1.99 W/kg

| | |
|-----------------------|----------|
| SAR 10g (W/Kg) | 0.623453 |
| SAR 1g (W/Kg) | 1.211140 |



Attestation of Global Compliance(Shenzhen)Co.,Ltd.

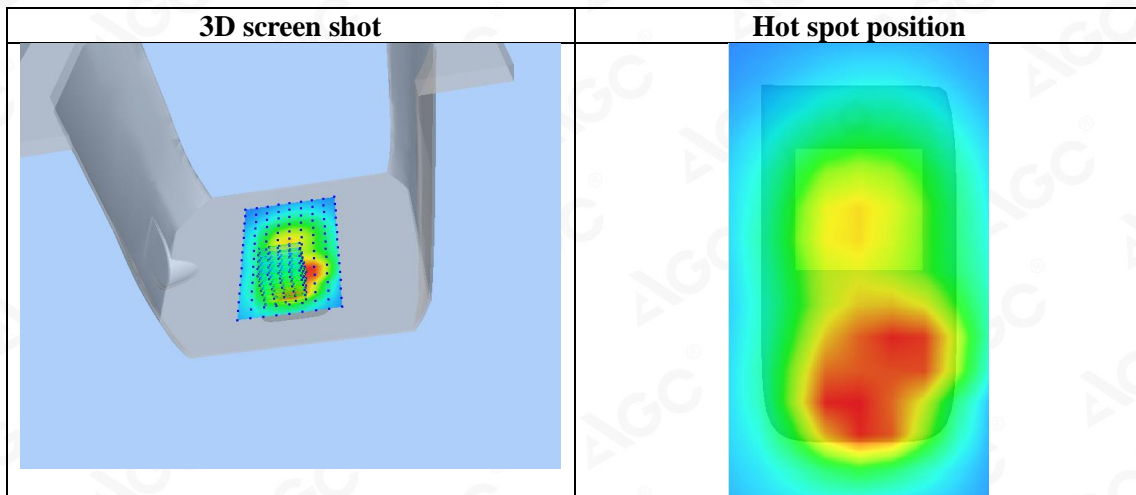
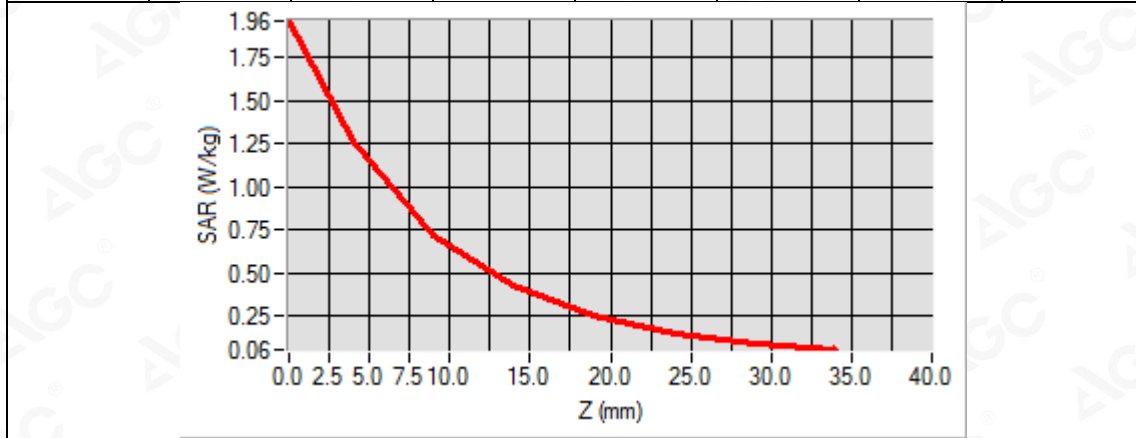
Add: 2/F., Building 2, No.1-4, Chaxi Sanwei Technial Industrial Park, Gushu,
Xixiang, Bao'an District, Shenzhen, Guangdong, China

Tel: +86-755 2523 4088

E-mail: agc@agc-cert.com

Service Hotline:400 089 2118

| Z (mm) | 0.00 | 4.00 | 9.00 | 14.00 | 19.00 | 24.00 | 29.00 |
|------------|--------|--------|--------|--------|--------|--------|--------|
| SAR (W/Kg) | 1.9644 | 1.2616 | 0.7139 | 0.4270 | 0.2535 | 0.1518 | 0.0917 |



Attestation of Global Compliance(Shenzhen)Co.,Ltd.

Add: 2/F., Building 2, No.1-4, Chaxi Sanwei Technial Industrial Park, Gushu, Xixiang, Bao'an District, Shenzhen, Guangdong, China

Tel: +86-755 2523 4088

E-mail: agc@agc-cert.com

Service Hotline:400 089 2118

Test Laboratory: AGC Lab
LTE Band 2 Low-Body-Back (1 RB#0)
DUT: Portable Translator; Type: HYP10

Date: July 03,2019

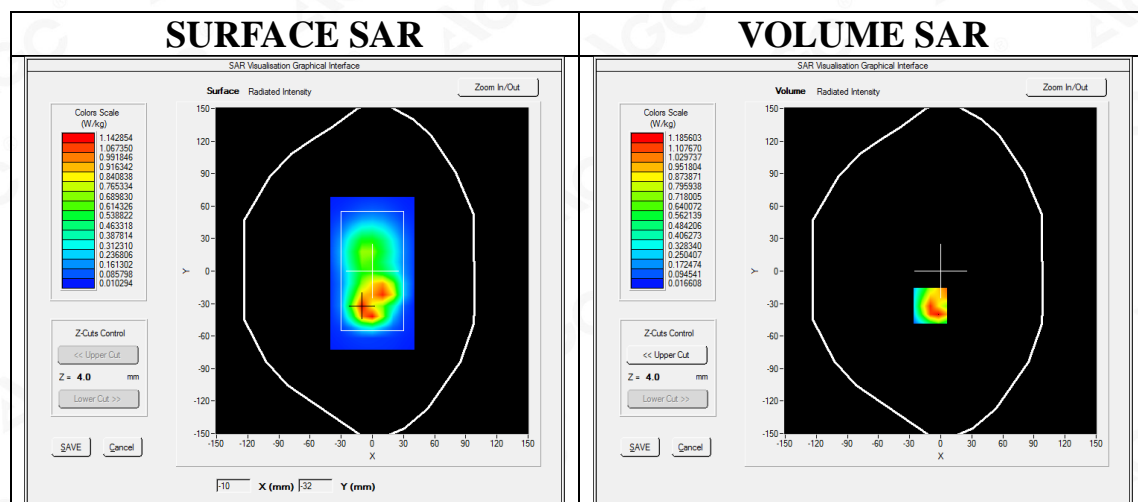
Communication System: LTE; Communication System Band: LTE Band 2; Duty Cycle:1:1; Conv.F=5.39;
Frequency:1860MHz; Medium parameters used: $f = 1850 \text{ MHz}$; $\sigma = 1.46 \text{ mho/m}$; $\epsilon_r = 53.91$; $\rho = 1000 \text{ kg/m}^3$;
Phantom section: Flat Section
Ambient temperature ($^{\circ}\text{C}$): 20.9, Liquid temperature ($^{\circ}\text{C}$): 20.6

SATIMO Configuration:

- Probe: SSE5; Calibrated: Aug. 08,2018; Serial No.: SN 22/12 EP159
- Sensor-Surface: 4mm (Mechanical Surface Detection)
- Phantom: SAM twin phantom
- Measurement SW: OpenSAR V4_02_35

Configuration/ LTE Band 2 Low-Body-back/Area Scan: Measurement grid: dx=8mm, dy=8mm
Configuration/ LTE Band 2 Low-Body-back/Zoom Scan: Measurement grid: dx=8mm,dy=8mm, dz=5mm;

| | |
|------------------------|-------------------------------|
| Area Scan | surf_sam_plan.txt, h= 5.00 mm |
| Zoom Scan | 5x5x7,dx=8mm dy=8mm dz=5mm |
| Phantom | Validation plane |
| Device Position | Body Back |
| Band | LTE Band 2 |
| Channels | Low |
| Signal | OFDM (Crest factor: 1.0) |



Maximum location: X=-10.00, Y=-32.00

SAR Peak: 1.93 W/kg

| | |
|-----------------------|----------|
| SAR 10g (W/Kg) | 0.569671 |
| SAR 1g (W/Kg) | 1.121605 |



Attestation of Global Compliance(Shenzhen)Co.,Ltd.

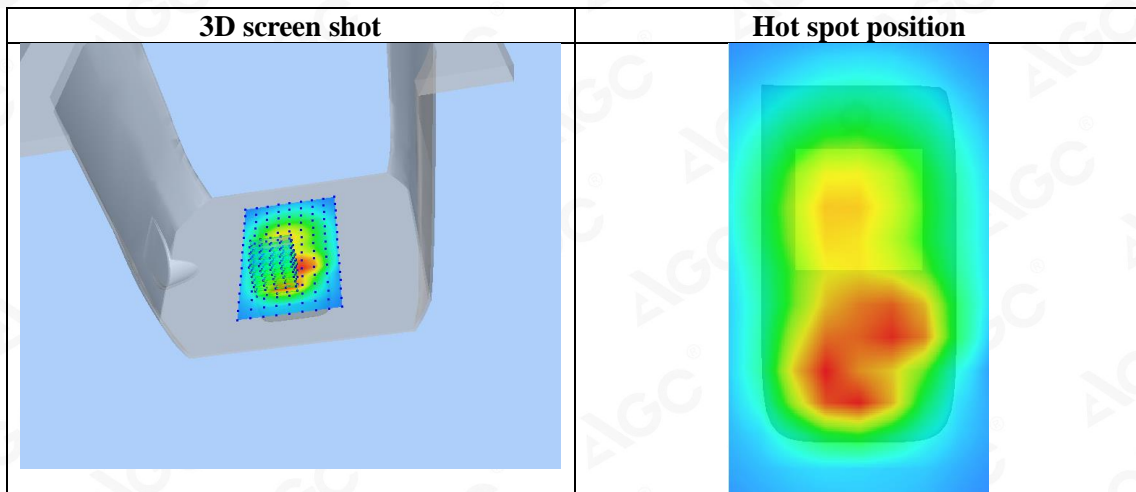
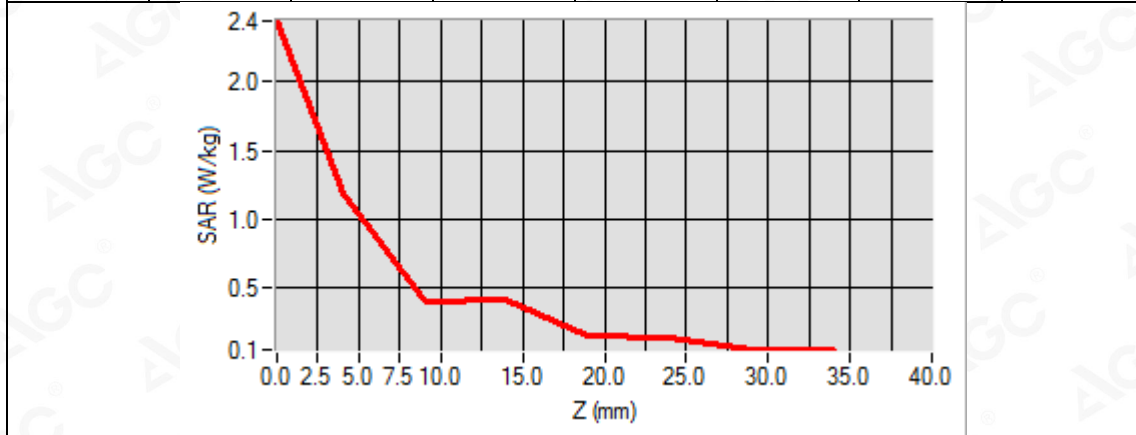
Add: 2/F., Building 2, No.1-4, Chaxi Sanwei Technial Industrial Park, Gushu,
Xixiang, Bao'an District, Shenzhen, Guangdong, China

Tel: +86-755 2523 4088

E-mail: agc@agc-cert.com

Service Hotline:400 089 2118

| Z (mm) | 0.00 | 4.00 | 9.00 | 14.00 | 19.00 | 24.00 | 29.00 |
|------------|--------|--------|--------|--------|--------|--------|--------|
| SAR (W/Kg) | 2.4423 | 1.1856 | 0.3967 | 0.4224 | 0.1497 | 0.1481 | 0.0545 |



Attestation of Global Compliance(Shenzhen)Co.,Ltd.

Add: 2/F., Building 2, No.1-4, Chaxi Sanwei Technial Industrial Park, Gushu,
Xixiang, Bao'an District, Shenzhen, Guangdong, China

Tel: +86-755 2523 4088

E-mail: agc@agc-cert.com

Service Hotline:400 089 2118

Test Laboratory: AGC Lab
LTE Band 7 Low-Body-Back (1RB#0)
DUT: Portable Translator; Type: HYP10

Date: July 16,2019

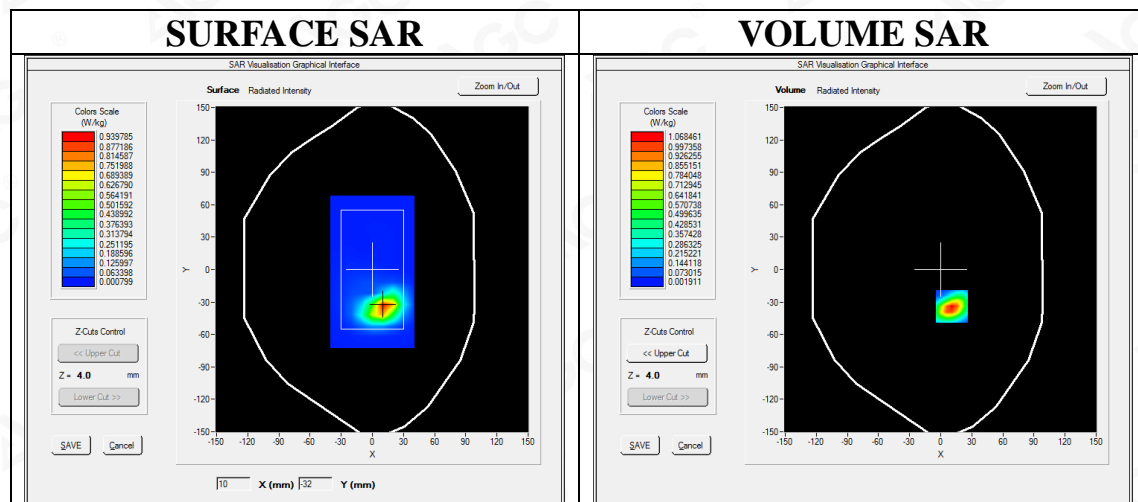
Communication System: LTE; Communication System Band: LTE Band 7; Duty Cycle:1:1; Conv.F=4.68
Frequency: 2510MHz; Medium parameters used: $f = 2600$ MHz; $\sigma = 2.10$ mho/m; $\epsilon_r = 54.23$; $\rho = 1000$ kg/m³ ;
Phantom section: Flat Section
Ambient temperature (°C): 20.9, Liquid temperature (°C): 20.6

SATIMO Configuration:

- Probe: SSE5; Calibrated: Aug. 08,2018; Serial No.: SN 22/12 EP159
- Sensor-Surface: 4mm (Mechanical Surface Detection)
- Phantom: SAM twin phantom
- Measurement SW: OpenSAR V4_02_35

Configuration/ LTE BAND 7 Low-Body-Back /Area Scan: Measurement grid: dx=10mm, y=10mm
Configuration/ LTE BAND 7 Low-Body-Back /Zoom Scan: Measurement grid: dx=5mm, dy=5mm, dz=5mm

| | |
|------------------------|-------------------------------|
| Area Scan | surf_sam_plan.txt, h= 5.00 mm |
| ZoomScan | 7x7x7,dx=5mm dy=5mm dz=5mm |
| Phantom | Validation plane |
| Device Position | Body Back |
| Band | LTE BAND 7 |
| Channels | Low |
| Signal | OFDM (Crest factor: 1.0) |



Maximum location: X=11.00, Y=-34.00

SAR Peak: 1.92 W/kg

| | |
|-----------------------|----------|
| SAR 10g (W/Kg) | 0.389271 |
| SAR 1g (W/Kg) | 0.971246 |

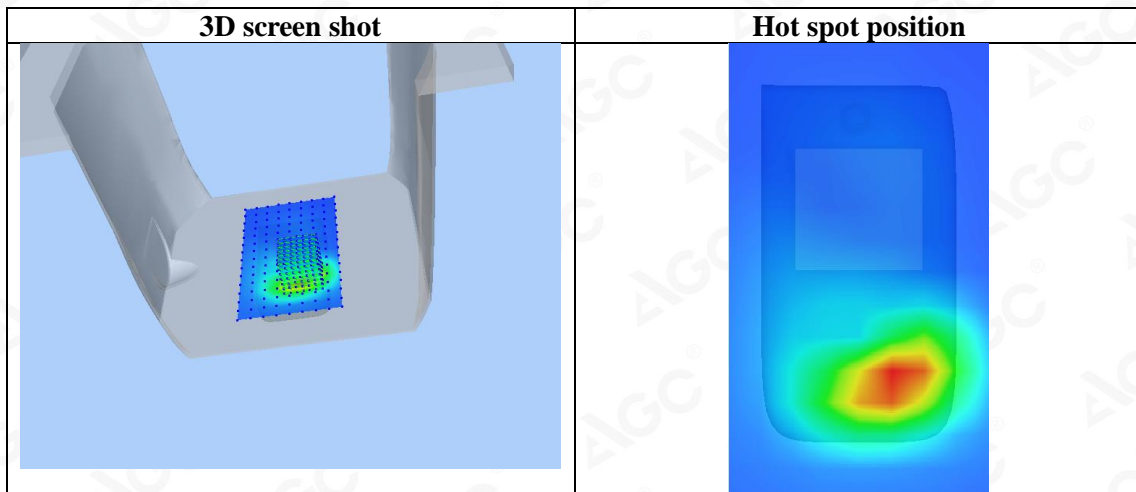
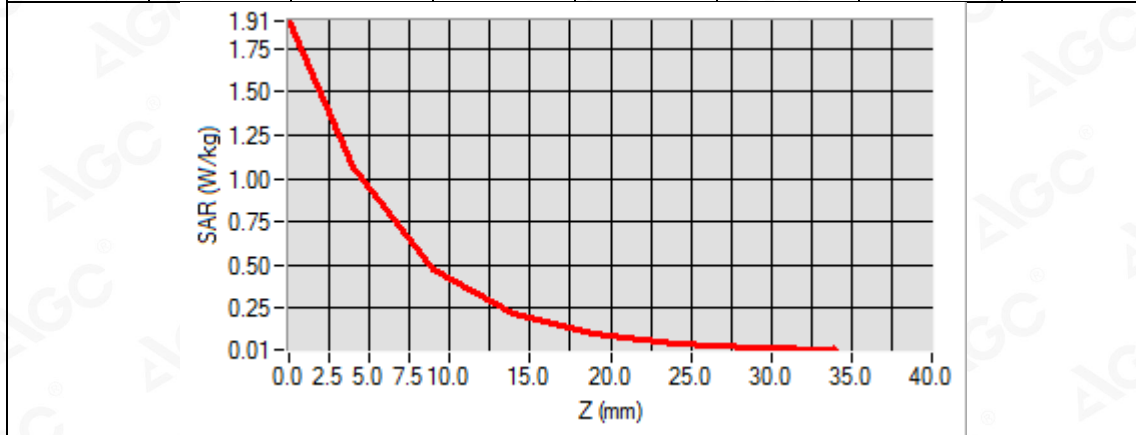


Attestation of Global Compliance(Shenzhen)Co.,Ltd.

Add: 2/F., Building 2, No.1-4, Chaxi Sanwei Technial Industrial Park, Gushu,
Xixiang, Bao'an District, Shenzhen, Guangdong, China

Tel: +86-755 2523 4088 E-mail: agc@agc-cert.com Service Hotline:400 089 2118

| Z (mm) | 0.00 | 4.00 | 9.00 | 14.00 | 19.00 | 24.00 | 29.00 |
|------------|--------|--------|--------|--------|--------|--------|--------|
| SAR (W/Kg) | 1.9103 | 1.0674 | 0.4726 | 0.2165 | 0.1005 | 0.0455 | 0.0217 |



Attestation of Global Compliance(Shenzhen)Co.,Ltd.

Add: 2/F., Building 2, No.1-4, Chaxi Sanwei Technial Industrial Park, Gushu, Xixiang, Bao'an District, Shenzhen, Guangdong, China

Tel: +86-755 2523 4088

E-mail: agc@agc-cert.com

Service Hotline:400 089 2118

Test Laboratory: AGC Lab
LTE Band 41 Mid-Body-Back(1RB#0)
DUT: Portable Translator; Type: HYP10

Date: July 16,2019

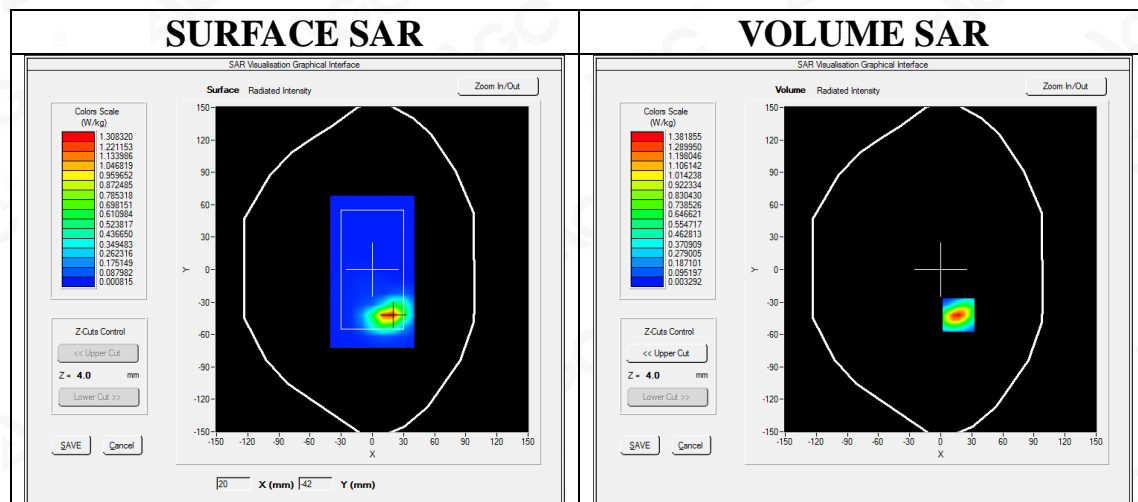
Communication System: LTE; Communication System Band: LTE Band 41; Duty Cycle:1:1.58; Conv.F=4.68
Frequency: 2593MHz; Medium parameters used: $f = 2600$ MHz; $\sigma = 2.15$ mho/m; $\epsilon_r = 52.67$; $\rho = 1000$ kg/m³ ;
Phantom section: Flat Section
Ambient temperature (°C): 20.9, Liquid temperature (°C): 20.6

SATIMO Configuration:

- Probe: SSE5; Calibrated: Aug. 08,2018; Serial No.: SN 22/12 EP159
- Sensor-Surface: 4mm (Mechanical Surface Detection)
- Phantom: SAM twin phantom
- Measurement SW: OpenSAR V4_02_35

Configuration/ LTE BAND 41 Mid-Body-Back /Area Scan: Measurement grid: dx=10mm, y=10mm
Configuration/ LTE BAND 41 Mid-Body-Back /Zoom Scan: Measurement grid: dx=5mm, dy=5mm, dz=5mm

| | |
|------------------------|-------------------------------|
| Area Scan | surf_sam_plan.txt, h= 5.00 mm |
| ZoomScan | 7x7x7,dx=5mm dy=5mm dz=5mm |
| Phantom | Validation plane |
| Device Position | Body Back |
| Band | LTE BAND 41 |
| Channels | Middle |
| Signal | OFDM (Crest factor: 1.58) |



Maximum location: X=17.00, Y=-42.00
SAR Peak: 2.26 W/kg

| | |
|-----------------------|----------|
| SAR 10g (W/Kg) | 0.528116 |
| SAR 1g (W/Kg) | 1.217326 |

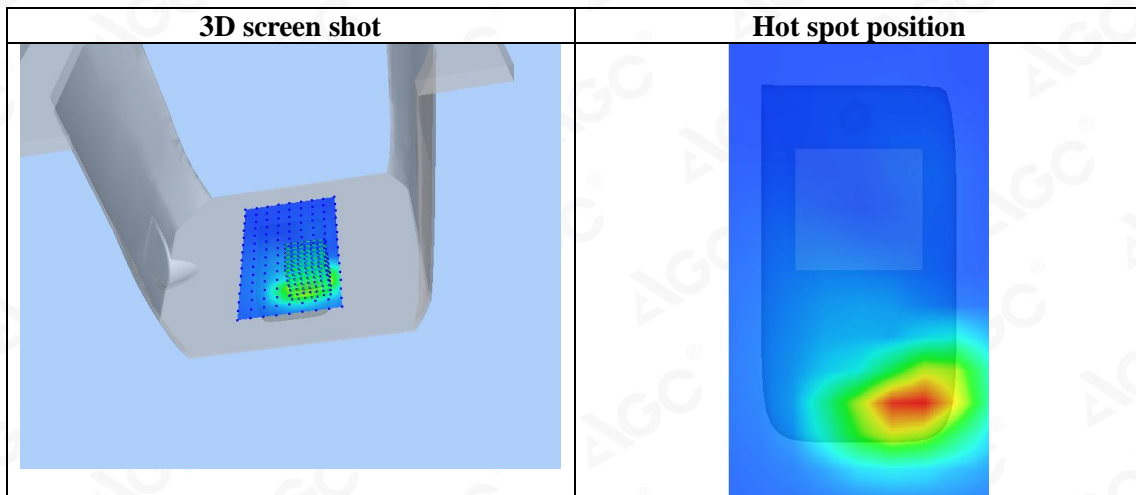
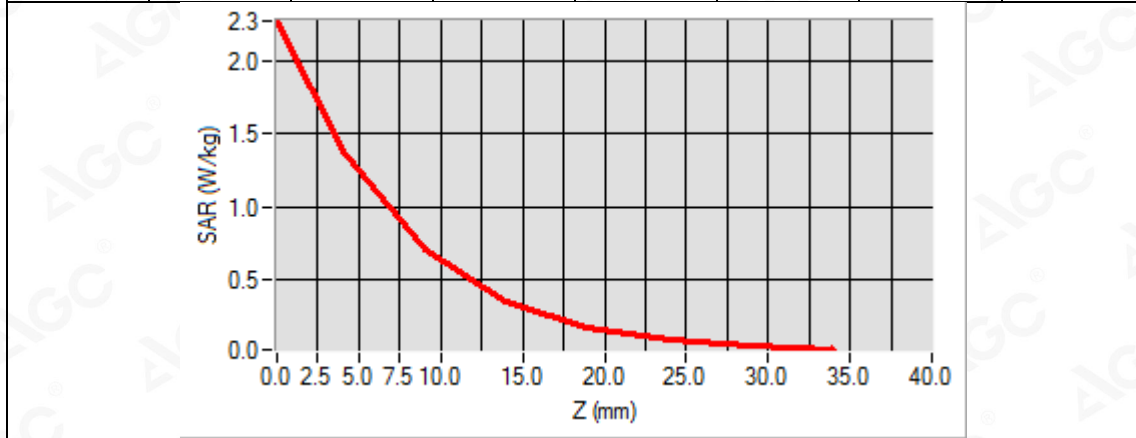


Attestation of Global Compliance(Shenzhen)Co.,Ltd.

Add: 2/F., Building 2, No.1-4, Chaxi Sanwei Technial Industrial Park, Gushu,
Xixiang, Bao'an District, Shenzhen, Guangdong, China

Tel: +86-755 2523 4088 E-mail: agc@agc-cert.com Service Hotline:400 089 2118

| Z (mm) | 0.00 | 4.00 | 9.00 | 14.00 | 19.00 | 24.00 | 29.00 |
|------------|--------|--------|--------|--------|--------|--------|--------|
| SAR (W/Kg) | 2.2652 | 1.3801 | 0.7042 | 0.3492 | 0.1731 | 0.0835 | 0.0403 |



Attestation of Global Compliance(Shenzhen)Co.,Ltd.

Add: 2/F., Building 2, No.1-4, Chaxi Sanwei Technical Industrial Park, Gushu, Xixiang, Bao'an District, Shenzhen, Guangdong, China

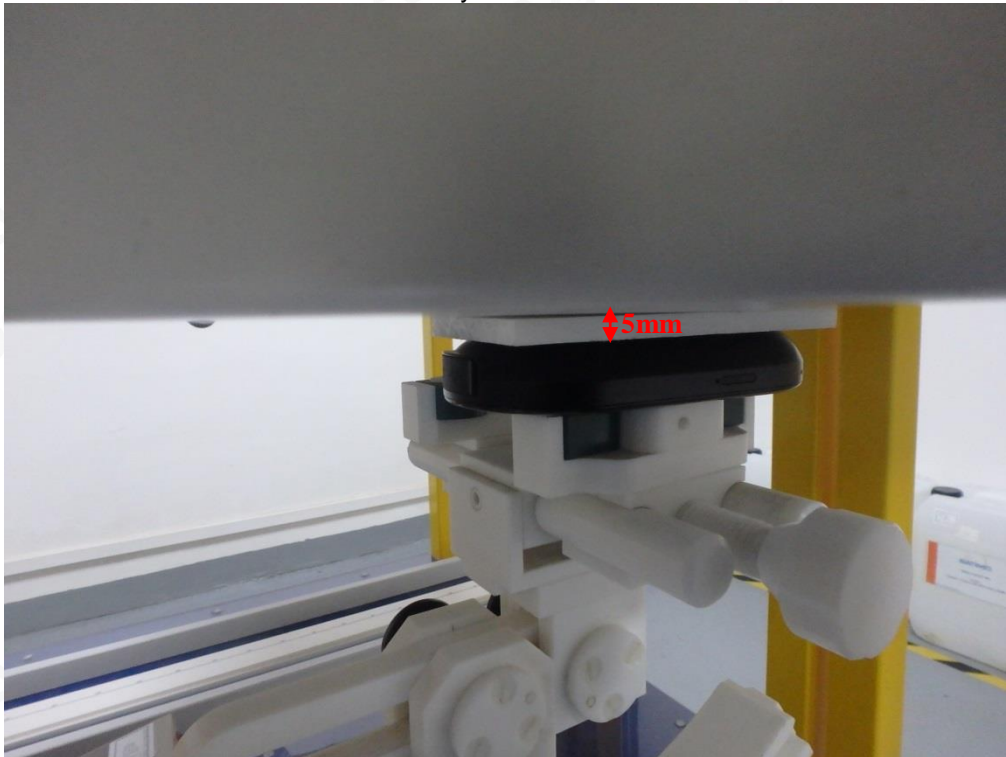
Tel: +86-755 2523 4088

E-mail: agc@agc-cert.com

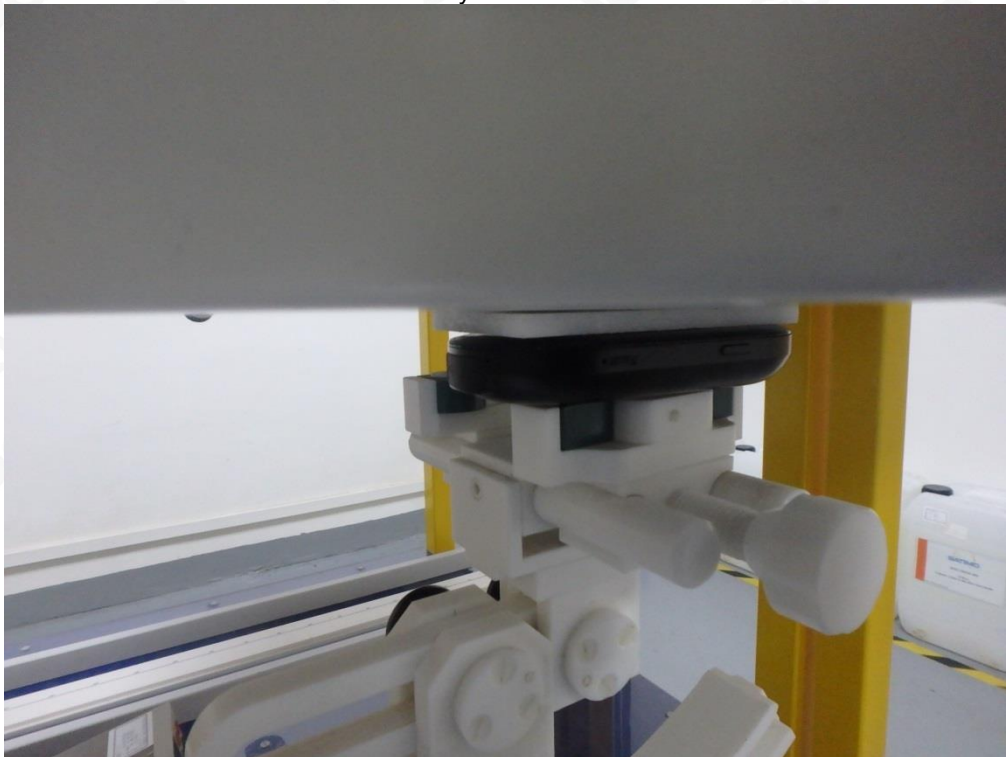
Service Hotline:400 089 2118

APPENDIX C. TEST SETUP PHOTOGRAPHS

Body Back 5mm



Body Front 5mm



Attestation of Global Compliance(Shenzhen)Co.,Ltd.

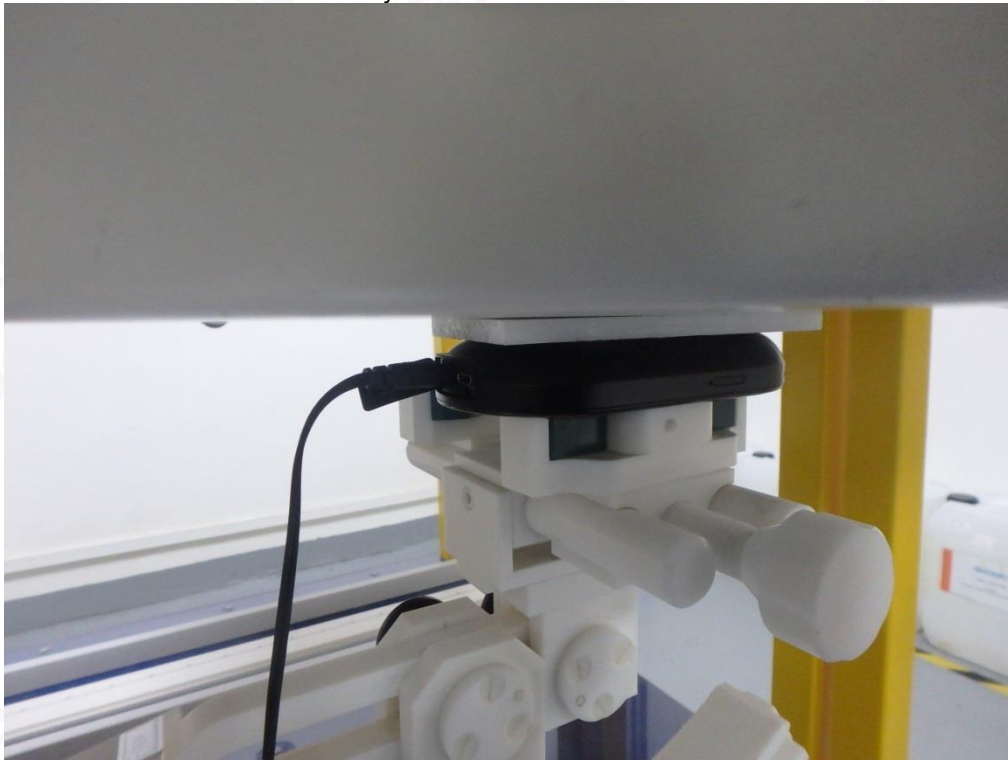
Add: 2/F., Building 2, No.1-4, Chaxi Sanwei Technial Industrial Park, Gushu,
Xixiang, Bao'an District, Shenzhen, Guangdong, China

Tel: +86-755 2523 4088

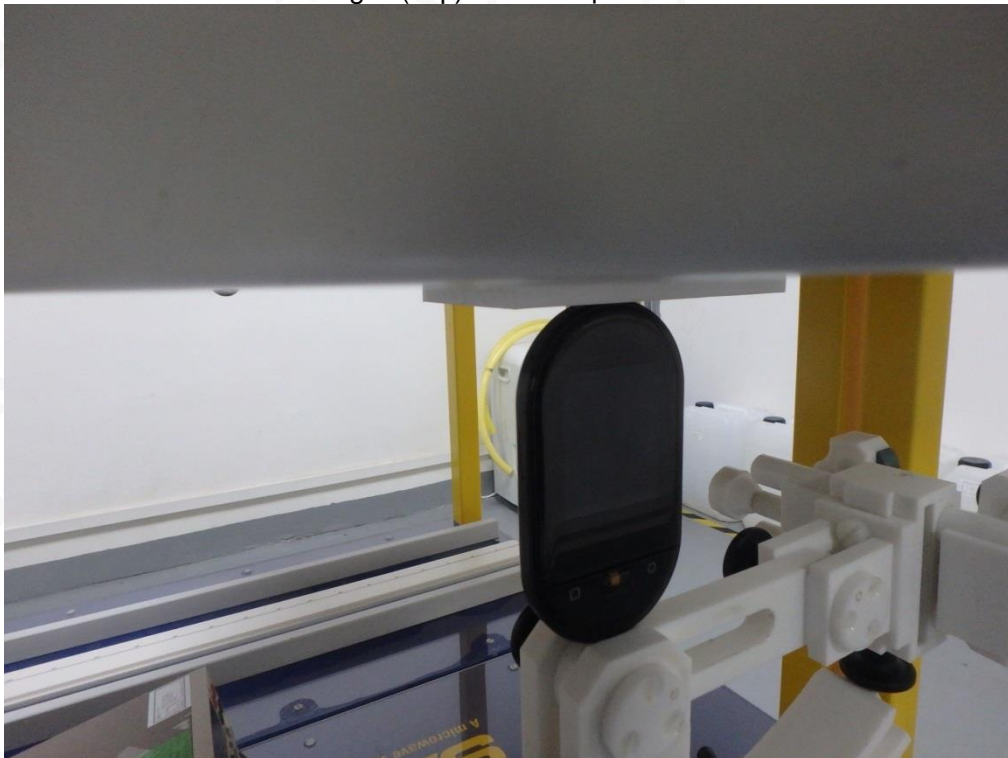
E-mail: agc@agc-cert.com

Service Hotline:400 089 2118

Body Back with headset 5mm



Edge 1(Top) 5mm-Hotspot Mode



Attestation of Global Compliance(Shenzhen)Co.,Ltd.

Add: 2/F., Building 2, No.1-4, Chaxi Sanwei Technial Industrial Park, Gushu,
Xixiang, Bao'an District, Shenzhen, Guangdong, China

Tel: +86-755 2523 4088

E-mail: agc@agc-cert.com

Service Hotline:400 089 2118

Edge 2 (Right) 5mm-Hotspot Mode



Edge 3 (Bottom) 5mm-Hotspot Mode



Attestation of Global Compliance(Shenzhen)Co.,Ltd.

Add: 2/F., Building 2, No.1-4, Chaxi Sanwei Technial Industrial Park, Gushu,
Xixiang, Bao'an District, Shenzhen, Guangdong, China

Tel: +86-755 2523 4088

E-mail: agc@agc-cert.com

Service Hotline:400 089 2118

Edge 4(Left) 5mm-Hotspot Mode



Attestation of Global Compliance(Shenzhen)Co.,Ltd.

Add: 2/F., Building 2, No.1-4, Chaxi Sanwei Technial Industrial Park, Gushu,
Xixiang, Bao'an District, Shenzhen, Guangdong, China

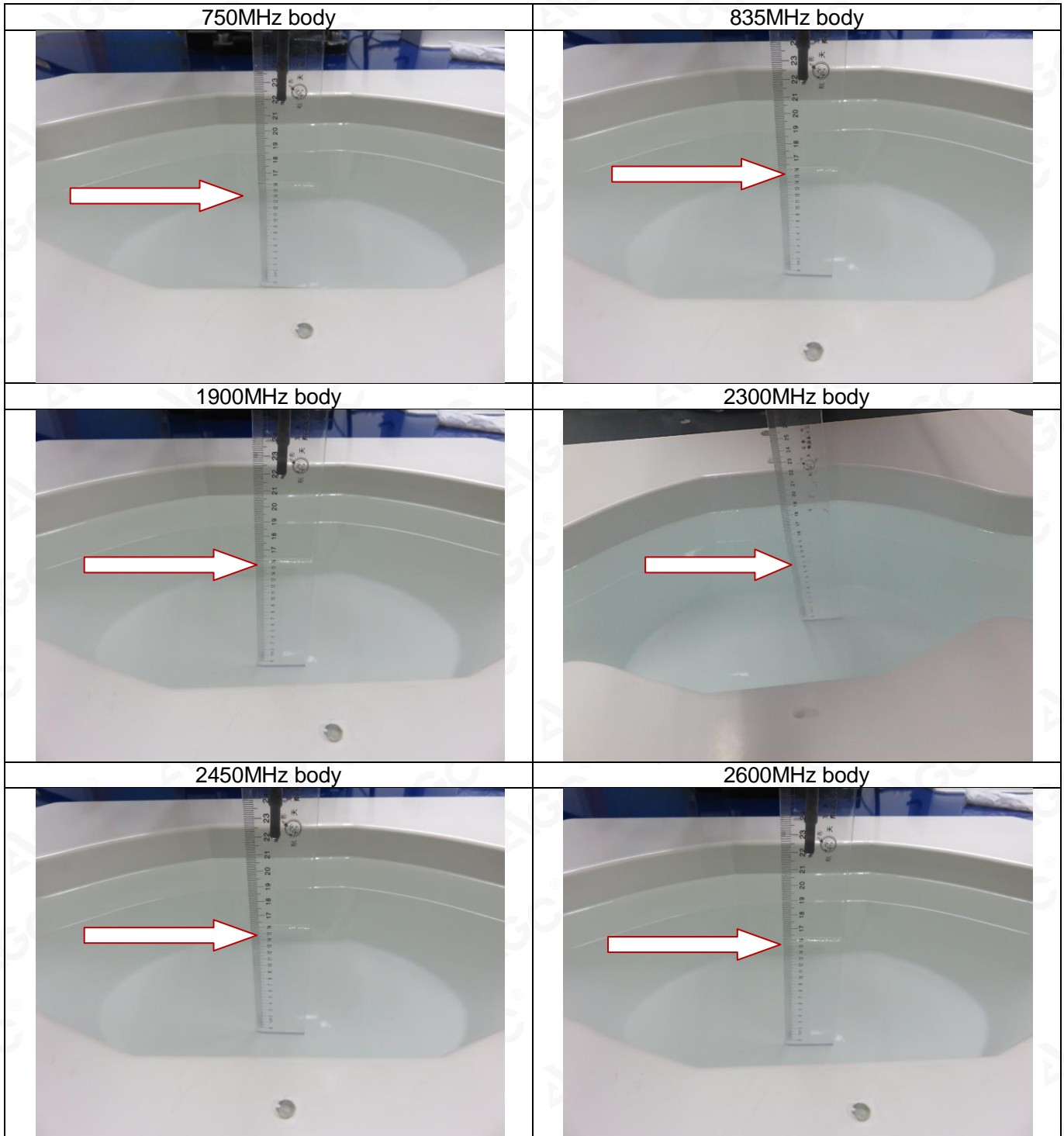
Tel: +86-755 2523 4088

E-mail: agc@agc-cert.com

Service Hotline:400 089 2118

DEPTH OF THE LIQUID IN THE PHANTOM—ZOOM IN

Note : The position used in the measurement were according to IEEE 1528-2013



Attestation of Global Compliance(Shenzhen)Co.,Ltd.

Add: 2/F., Building 2, No.1-4, Chaxi Sanwei Technial Industrial Park, Gushu,
Xixiang, Bao'an District, Shenzhen, Guangdong, China

Tel: +86-755 2523 4088

E-mail: agc@agc-cert.com

Service Hotline:400 089 2118

APPENDIX D. CALIBRATION DATA

Refer to Attached files.



Attestation of Global Compliance(Shenzhen)Co.,Ltd.

Add: 2/F., Building 2, No.1-4, Chaxi Sanwei Technial Industrial Park, Gushu,
Xixiang, Bao'an District, Shenzhen, Guangdong, China

Tel: +86-755 2523 4088

E-mail: agc@agc-cert.com

Service Hotline:400 089 2118