

## WiFi Flame Alarm Instruction

V 1.0



Tuya smart app

Search Tuya in the APP store and download it to use it

01

### 1. Product Overview

This product is a UV flame detector that detects fire by detecting the ultraviolet rays generated by the burning substance. It would sound alarm and push message to user APP as soon as there is a fire occurring. It is suitable for places that are prone to have visible flames and have strong flame radiation or no smoldering stage in the event of fire. This device could be used to detect fires and reduce losses in a timely manner.

### 2. Technical Parameters

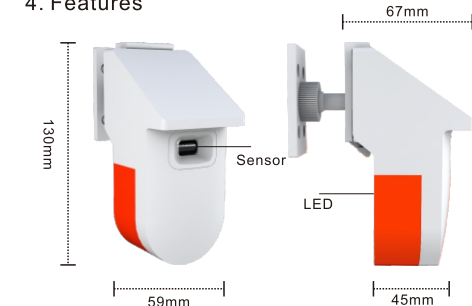
Working voltage: 5V1A
Rated power: 0.2W
Detection distance: >10 meters (10cm*10cm area visible flame)
Installation height: 1.5m - 3m
Normal working: The red LED flashes every 7seconds.
Alarm indication: red led always on
Working temperature: -5 ° C - +60 ° C
Operating humidity: up to 95% (no condensation)
Spectral response range: 180nm~ 290nm
Dimension: 130mm*59mm*67mm

02

### 3. Features

- 1) It adopts imported chip inside to process and transmit wireless signal accurately
- 2) Long detection range and wide detection angle.
- 3) It uses intelligent algorithm to achieve fast alarm and reduce false alarm.
- 4) The sensing component adopts imported advanced ultraviolet photosensitive tube, which has high sensitivity, reliable performance and a strong resistance to dust pollution, moisture and corrosion.

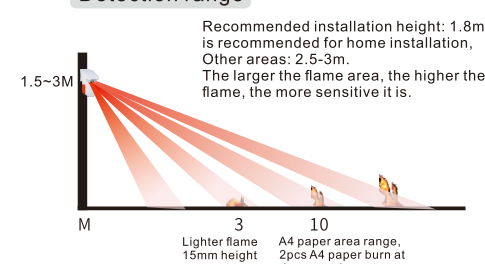
### 4. Features



03



### Detection range



04

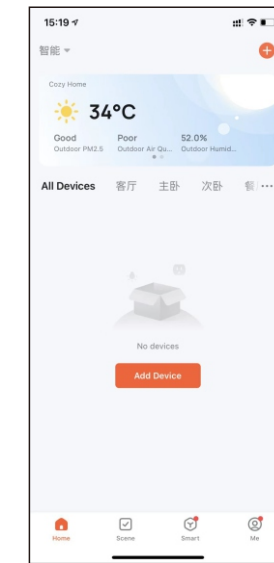
### 5. Pair to wifi

#### 1) Download tuya smart app in the app store and register an account.

Note: It is recommended to register with a mobile phone number. WeChat or email registration may cause the app alert is not sent out in time.

2. Open the bluetooth and location of your phone, connect it to wifi --- open the APP click + in the upper right corner --- auto search device nearby --- Power the device on --- long press the set key until the red led blinks quickly--- find the device -- add the device -- Input wifi password (this step may be skipped if wifi is already connected) -- next --- ok -- enter into device main interface

05



After connecting to wifi, login to APP and add device

06



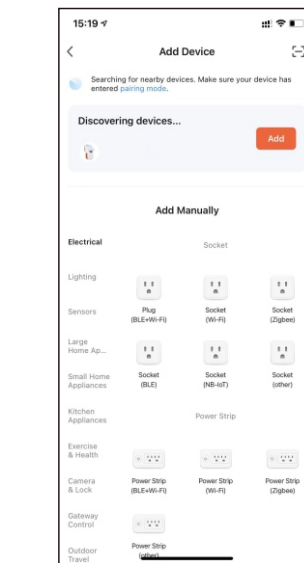
Search bluetooth device nearby

07

### Device operation

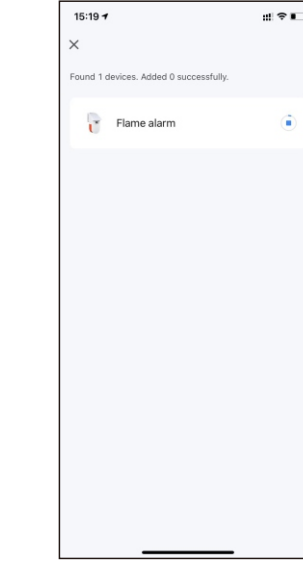


08



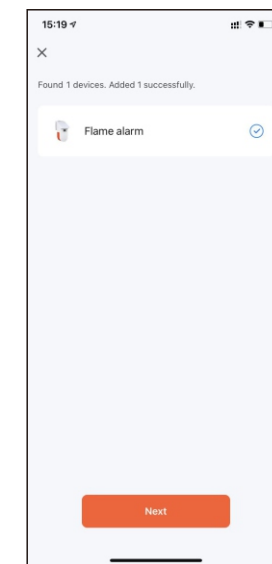
APP find device--click add

09



Adding device

10



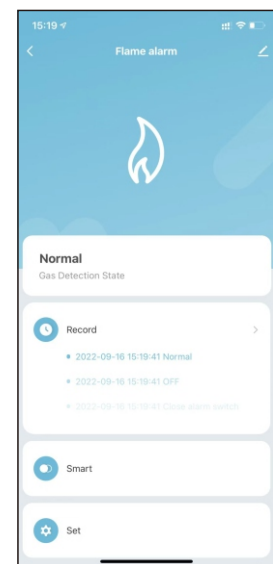
Added successfully, click Next

11



Added successfully, click Ok

12

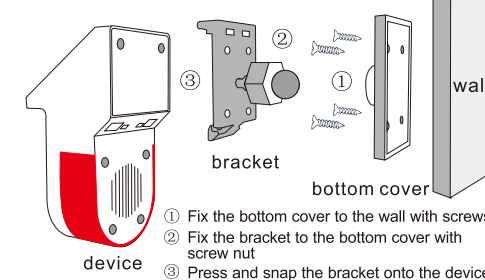


Main interface of equipment

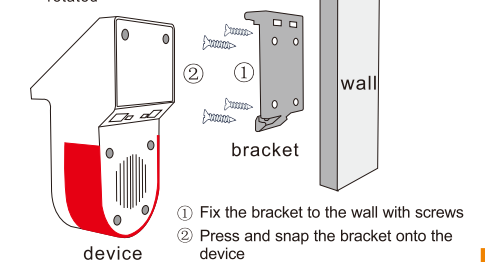
13

### 6. Device installation instructions

Installation method 1: The device can be rotated



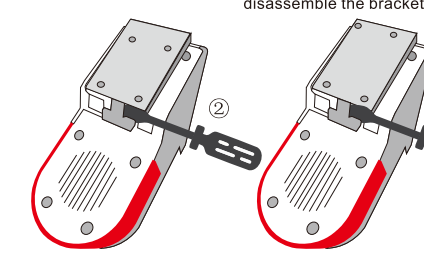
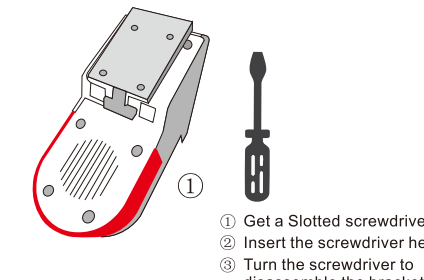
Installation method 2: The device is fixed and can not be rotated



1 Fix the bracket to the wall with screws  
2 Press and snap the bracket onto the device

14

### Bracket disassembly method



15

### 7. Operating instructions

#### 1. Device Status

When the device is in normal state, it can be tested with a lighter. The red light flashes once every 7s in the initial state, and it would keep on when alarming. The longer the detection range is, the bigger the flame should be. If you do not handle the alarm after the siren stops, it would enter detection state again (the red led keeps on) and it would alarm again when there is flame again.

#### 2. Alarm handle

The red led lights when it alarms; press test key on the device (or press silence key on the app) to cancel the alarm.

#### 3. Siren sound duration setting

Set the siren sound duration on the app (if you set it to be 0, that means silent alarm)

#### 4. The device is shared by multiple people

Click APP - enter the device interface - click "+" in the upper right corner - choose share device - add sharing- add other tuya account

16

### 5. How to distinguish multiple devices when one device alarms

Click APP - enter the device interface - click "+" in the upper right corner - change the device name. Then when it alarms, it would push message by the changed device name.

### 8. Notes for device pairing:

- 1) Make sure the device, mobile and router are as near as possible
- 2) Make sure wifi broadcast is turned on, not hidden.
- 3) Make sure the router encryption is WPA2-PSK, authentication type is AES or set both to auto. Wireless mode could not set 11n only.
- 4) If the number of devices connected to the router reaches the upper limit, you can try to disable a device to vacate the channel.
- 5) If pairing fails repeatedly, try to use another phone as a hotspot. Connect your phone to the hotspot of the other phone and then repeat the pairing process. If it works, that means the device is working. Reset your home router and try the pairing again.

17

### 9. Installation notice

- 1) Do not install it in direct and indirect sunlight or where there is strong UV light source, e.g. halogen lamp, or visible fire like, Welding work, X-rays, arcs, sparks, etc
- 2) Do not violently throw it. There is a high-voltage circuit inside the product. It is strictly forbidden for non-professionals to disassemble the machine without permission to avoid unnecessary accident injuries. Basic safety precautions should always be followed.
- 3) A single device may not be able to provide enough prompts in a vast area and a very ventilated environment. If an alarm occurs, attention should be paid. In addition to the correct use of the alarm, safety awareness should also be strengthened.
- 4) The equipment should be regularly inspected and maintained. An alarm should be triggered at regular intervals to determine whether the WIFI is disconnected and the alarm is working normally.
- 5) You can monitor the device anywhere on your APP as long as the device is connected to wifi. The device would auto re-connect to WIFI after power is off and then resumes, no need to re-pair it.

18

### 10. Mobile push settings (Important)

- Iphone: Settings - Notifications - find tuya smart app - allow notifications
- Xiaomi: settings - notification and status bar - notification management - find tuya APP - click to allow various notifications - then exit to return settings - find authorization management - self-start management - allow APP to auto-start .
- Huawei: settings - notification and status bar - notification management - find tuya APP - click to allow various types of notifications - then exit to return settings --- find authorization management - find tuya APP - permissions - self-start management - allow the auto-start.
- OPPO/VIVO Mobile: Phone Settings - Status Bar and Notifications - Manage Notifications - Find tuya App - Allows all types of push. - Exit the return settings - Authorization management - find the tuya APP - allow self-starting. Other mobile phone settings are basically the same.

19

This device complies with part 15 of the FCC Rules. Operation is subject to the following two conditions:  
(1) This device may not cause harmful interference, and  
(2) This device must accept any interference received, including interference that may cause undesired operation.

Any Changes or modifications not expressly approved by the party responsible for compliance could void the user's authority to operate the equipment.

Note: This equipment has been tested and found to comply with the limits for a Class B digital device, pursuant to part 15 of the FCC Rules. These limits are designed to provide reasonable protection against harmful interference in a residential installation. This equipment generates uses and can radiate radio frequency energy and, if not installed and used in accordance with the instructions, may cause harmful interference to radio communications. However, there is no guarantee that interference will not occur in a particular installation. If this equipment does cause harmful interference to radio or television reception, which can be determined by turning the equipment off and on, the user is encouraged to try to correct the interference by one or more of the following measures:  
-Reorient or relocate the receiving antenna.  
-Increase the separation between the equipment and receiver.  
-Connect the equipment into an outlet on a circuit different from that to which the receiver is connected.  
-Consult the dealer or an experienced radio/TV technician for help.

This equipment complies with FCC radiation exposure limits set forth for an uncontrolled environment. This equipment should be installed and operated with minimum distance 20cm between the radiator & your body.

20