



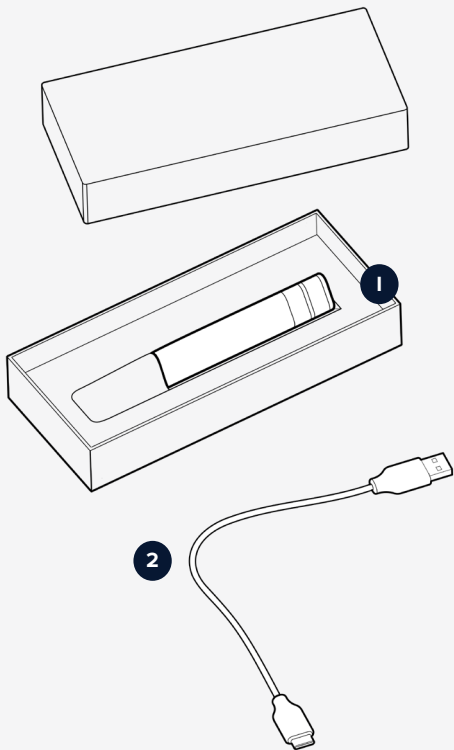
Quick Start Guide

Table of Contents

Box contents	2
Charging you device	3
Download the App	4
Pairing your device	5
Connecting a cartridge	6
Personalizing a dose	7
FAQ & Troubleshooting	8

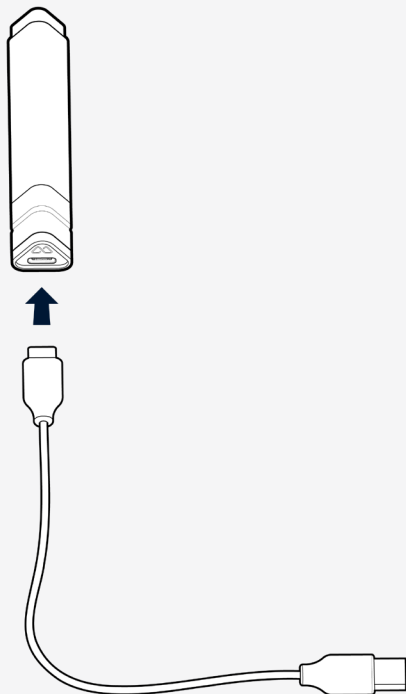


For additional information
visit **prodose.io**.



Box Contents

- 1** Prodose base
- 2** USB-C Charging Cord



Charge Your Device

Connect your Prodose base to a power source using the included USB-C Cable for approx. **10 minutes**.

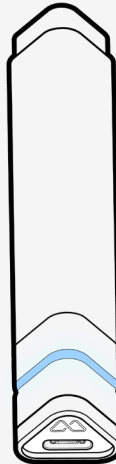
The device will have enough power for initial pairing, but will need roughly **2 hours** to have a full charge.



Download the App

Visit <https://prodose.io/install> to download to Prodose app.

In your smartphone settings, make sure **Bluetooth** is turned **on**.



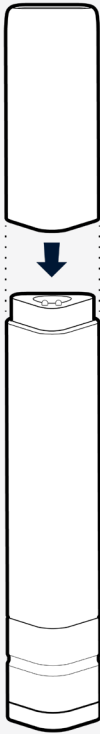

5
Seconds



Pair your Device

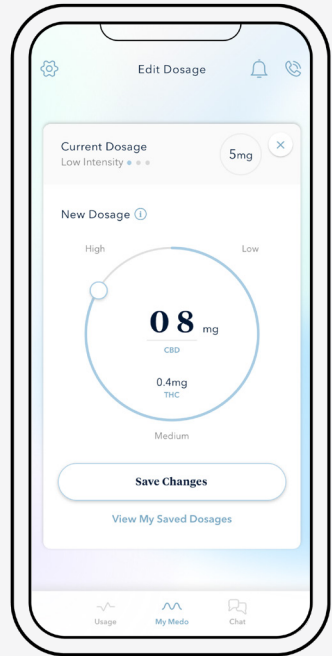
Press and **hold** the power button for **5 seconds**.

The blue light will flash solid when your Prodose device has paired with your smartphone.



Connect a Cartridge

Unbox and gently connect your cartridge to the Prodose base. The LED lights will cycle yellow while validating your cartridge. A green light indicates your dose is ready to go, then press (and release) the main button to initiate a dose.



Personalize Your Dose

In the Prodose App click the **Edit** Button within “My Dosage”.

Drag the slider to desired dosage.

Tap the **Save Changes** button to save the new dosage amount.

FAQ & Troubleshooting

LED COLOR REFERENCE

- **Purple (cycling)**
Device is unlisted from any pairings and is searching for a Bluetooth connected handset to initiate Bluetooth pairing.
- **Blue (cycling)**
Device is searching for a Bluetooth pairing.
- **Yellow (cycling)**
Device is searching cartridge library for known details.
- **Red (blinking x2)**
Cartridge has not successfully coupled, remove cartridge and reconnect waiting for solid green LED to indicate cartridge recognition.

HOLDING THE POWER BUTTON

- **Green (solid)**
Battery is on
- **Red (flashing)**
Battery has no power
- **Red (solid)**
Power down
- **Blue (flashing)**
Charging (while connected to charging cable)
- **Blue (cycling)**
Bluetooth searching



If your device is not responding, check your battery by pressing and releasing the power button. If no response, charge your battery for at least 15 min.

FAQ & Troubleshooting

SETTING YOUR DOSE

From your dashboard, select **Edit** under **My Dosage**. Use your thumb to rotate the wheel, increasing or decreasing the dosage, until you've selected your desired milligrams.

The dosage will be distributed over 1-3 inhalations, dependent on the intensity level, as described below:

Low Intensity •••

1mg - 4mg

Distributed in one inhalation.

Medium Intensity •••

5mg - 8mg

Distributed over two inhalations.

High Intensity •••

9mg - 10mg

Distributed over three inhalations.

Tapping Save will return you to your home screen and activate your dose so its ready to use.

CARTRIDGE ISSUES

The device is powered on and paired but the app reads “no cartridge”:

Remove the cartridge and reconnect, wait for a solid green LED to indicate it has recognized the cartridge.

The device is powered on, not paired and the LED flashes red:

Remove the cartridge and reconnect, wait for a solid green LED to indicate it has recognized the cartridge.

Cartridge uncoupled while dosing (this will be indicated by a red LED flashing during the normal dosing sequence and the device emitted less-to-no vapor):

The device knows that this has happened and your dose will be ready when you reconnect the cartridge, waiting for a solid green LED to indicate cartridge recognition.