

USER MANUAL

X8

FCC ID: 2ATRA-X8



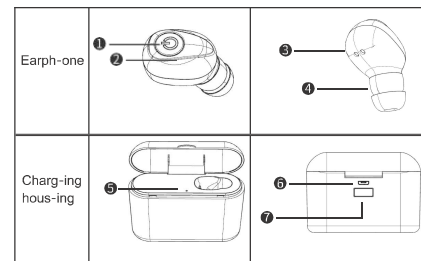
Made in China

BLUETOOTH MINI EARPHONE

NOTES !

1. Please read the manual carefully before using the earphone, and operate strictly according to the requirements.
2. Please use standard charger to charge the earphone in case of causing battery damaged.
3. Repeatedly charging or discharging the earphone will causing battery performance reduction, it is normal for rechargeable battery.
4. Please keep away from fire when using the earphone.
5. Please do not make the ports bloked, such as charging port, LED and earphone, etc.
6. Please don't use the earphone at high volume or for a long time. Avoid affecting the user's hearing
7. Please do not disassemble the earphone for any reason.
8. Please do not clean the earphone with oil or other corrosive cleaning agents.
9. Please do not use the earphone in potentially dangerous places.

Earphone Structure Introduction



Multi-function button ② LED indicator ③ Earphone charging ports
Eartips ⑤ Charging indicator light ⑥ Charging port

⑦ USB charging port, can charge for mobile phone

ACCESSORIES

Bluetooth earphone * 1 Charging house * 1
User manual * 1 USB charging cable * 1 Eartips * 1

QUICK PAIRING

First Step

Long press the multi-function button of the earphone 3s to turn on until the red and blue light flash alternately, it gets into pairing mode.

Second Step

Open the bluetooth device from mobile phone, and searching the pairing name "X8" to pair.

Others Pairing

The earphone will Auto connect with mobile phone if already connected last time.

BUTTON FUNCTIONS

Click Multi-function Button

1. Answer
2. Hang up
3. Play music
4. Pause music

Double click Multi-function Button

Move next song

Triple click Multi-function Button

Voice assistant: Sisi

Long Press Multi-function Button

Music mode: Long press 3s, volume down
Call coming in: Long press 2s, reject

Switch between Chinese & English

After power on, double click to switch language

Charging Instruction

1. Earphone Charging

Put earphones into charging house correctly, it will get into charging mode, LED will be red when charging, and will be blue then off 30s later after earphones get full charged.

2. Charging house

Charging mode: LED will flash
Full Charged: LED flashes for a long time

Notes!

Please only use an adapter with the output of 5V/1A to charge this product in case of causing earphones damaged.

SPECIFICATIONS

Model No.: X8	Battery capacity: 50mAh
Product Name: Bluetooth Earphones	Single earphone weight: 5g
Product weight: 150g	Charging time: around 1.5H
Working time : around 5H	Charging house time: 3 - 4H
Bluetooth version: 5.0	working range: up to 10m
Battery status: Support	Voice assistant: Support
Bluetooth protocol: A2DP/HFP/HSP/AVRCP	

Notes! Specifications will be different because of using method, using environment, etc.

FCC WARNING
This device complies with part 15 of the FCC Rules. Operation is subject to the following two conditions: (1) this device may not cause harmful interference, and (2) this device must accept any interference received, including interference that may cause undesired operation. Any changes or modifications not expressly approved by the party responsible for compliance could void the user's authority to operate the equipment.

NOTE: This equipment has been tested and found to comply with the limits for a Class B digital device, pursuant to Part 15 of the FCC Rules. These limits are designed to provide reasonable protection against harmful interference in a residential installation. This equipment generates, uses and can radiate radio frequency energy and, if not installed and used in accordance with the instructions, may cause harmful interference to radio communications. However, there is no guarantee that interference will not occur in a particular installation.

If this equipment does cause harmful interference to radio or television reception, which can be determined by turning the equipment off and on, the user is encouraged to try to correct the interference by one or more of the following measures:

- Reorient or relocate the receiving antenna.
- Increase the separation between the equipment and receiver.
- Connect the equipment into an outlet on a circuit different from that to which the receiver is connected.
- Consult the dealer or an experienced radio/TV technician for help.

To maintain compliance with FCC's RF Exposure guidelines, This equipment should be installed and operated with minimum distance between 20cm the radiator your body. Use only the supplied antenna.

FCC ID:2ATRA-X8