



# User Guide

Evo

**Notes:**

1. Before using the product, be sure to read *Important safety information* firstly
2. Some instructions in this guide may assume that you are using the built-in Windows 10 operating system. If you are using other Windows operating system, some operations maybe slightly different. And some operations may not apply to you, and thus shouldn't affect your use of this computer.
3. The features described in this guide are only used for EVOO EVC141 model, Some features may not be available on your own other computers and or your other own computers may include some features that are not described in this user guide.

**Notice for users in USA**

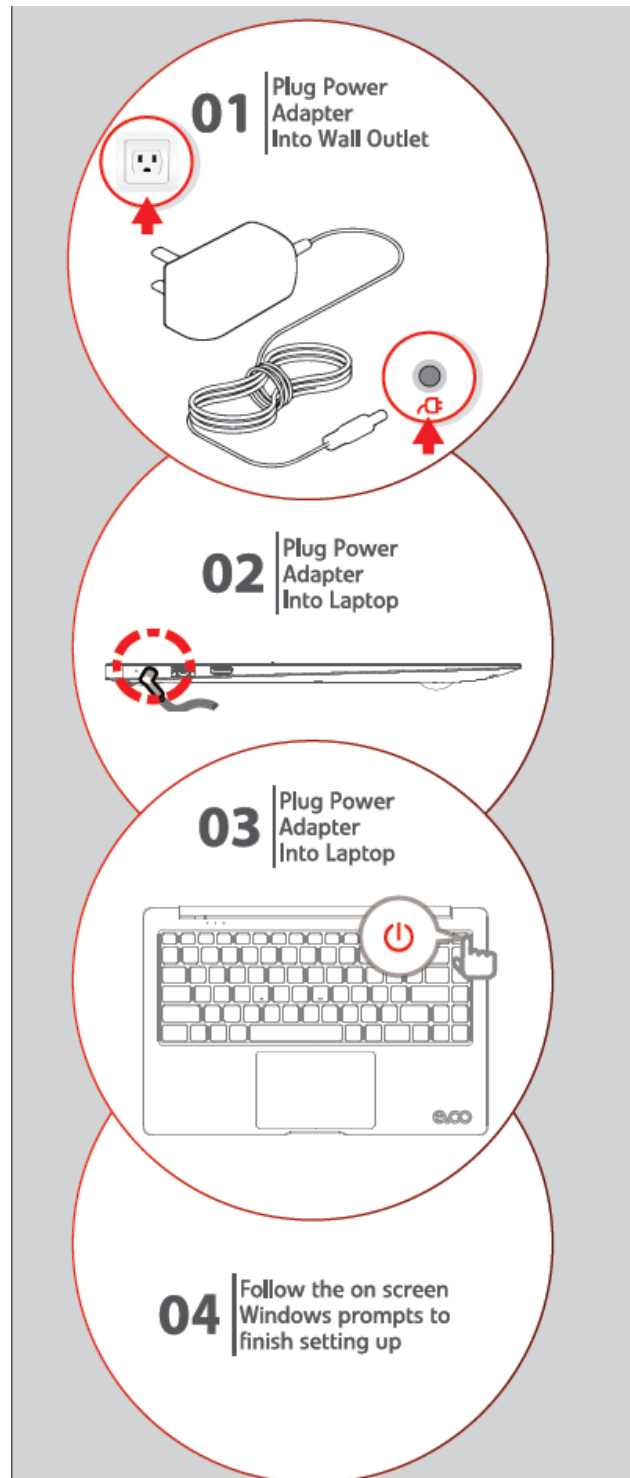
- If your product is not working correctly, Do contact the after sale office directly
- For more technical assistance, contact ESI support specialist 7:00am to 4:00pm by calling to 888-999-1682
- Additionally, you can download supporting information and updates on the ESI Website located at <http://www.evooproducts.com/>

First Edition(September 2020)

©copyright ESI 2020

## Chapter1 Quick start of your computer

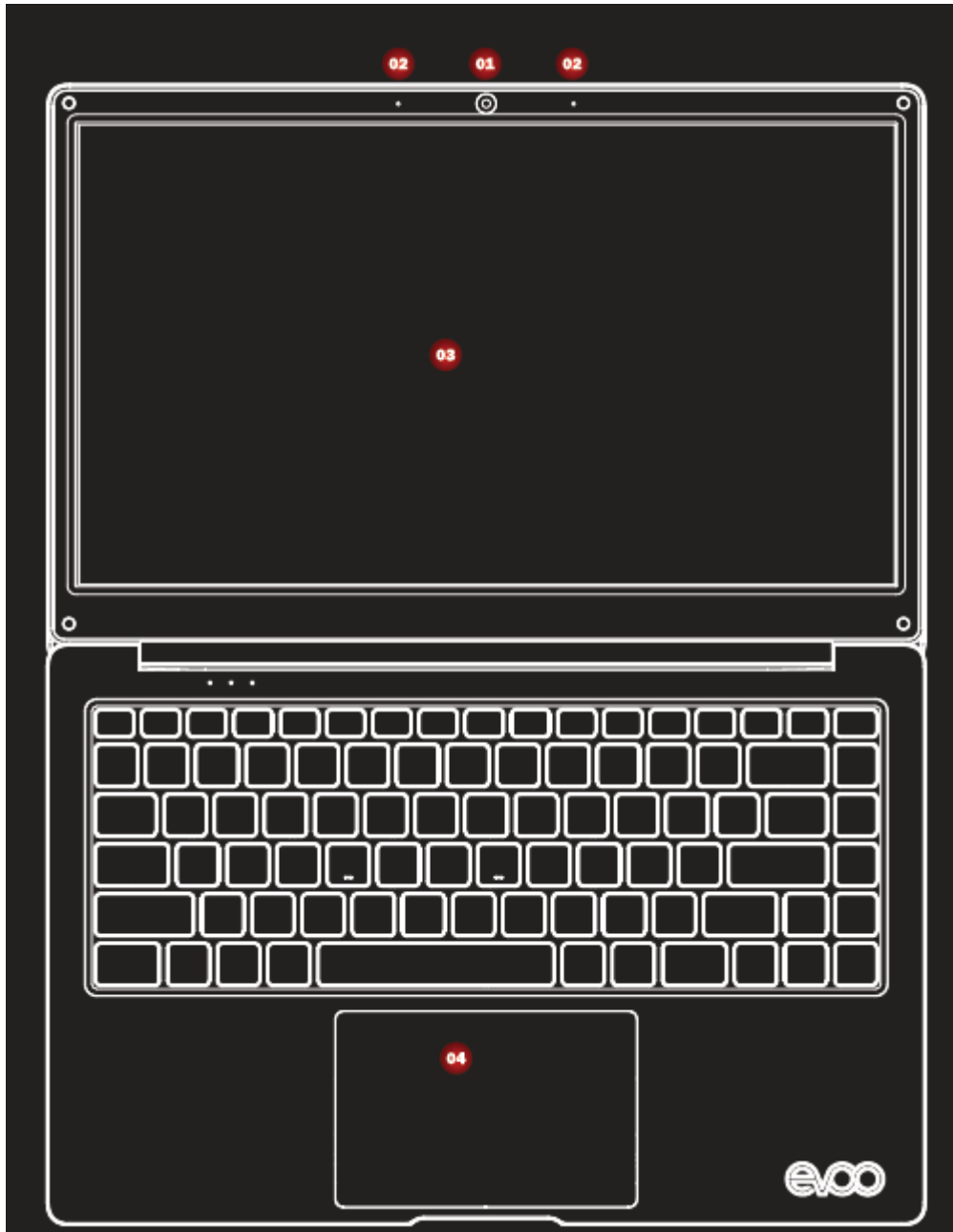
Follow the below 4 steps for a quick start of your computer.



## Chapter2 Getting to have a overview of your computer

This chapter provides information about the locations of connectors

### Top view



Attention:Do NOT open the display panel beyond 135 degrees When closing the display panel, and Do NOT leave pens or any other objects between the display panel and the keyboard.Otherwise, the display panel may be damaged.

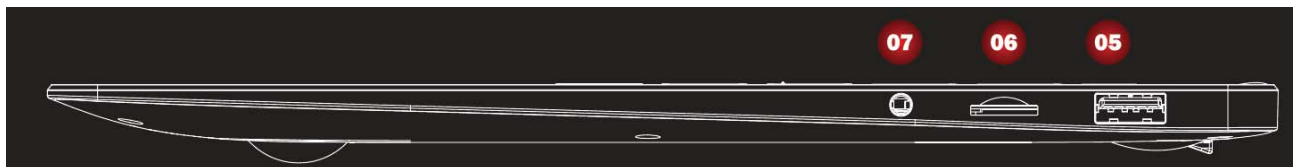
**01** Camera: 0.3M pixel front camera used for photo or video.

**02** Microphone: The built-in two digital microphones can be used for video conference, or simple audio recordings with noise cancelling functions

**03** Display: The 1920x1080 IPS display panel provides the best brilliant visual output

**04** Touchpad: The big size of touchpad provide user experience of precise click, scroll, drag

### Right side view

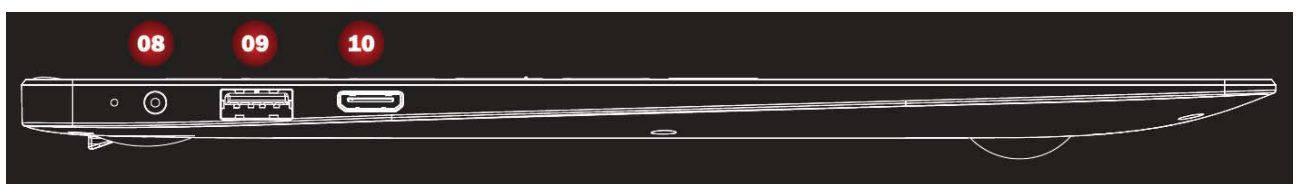


**05** USB2.0: connects to USB2.0 devices

**06** Micro SD slot: connect to micro sd card

**07** Headphone port: connects to external 3.5mm headphones for audio output

### Left side view

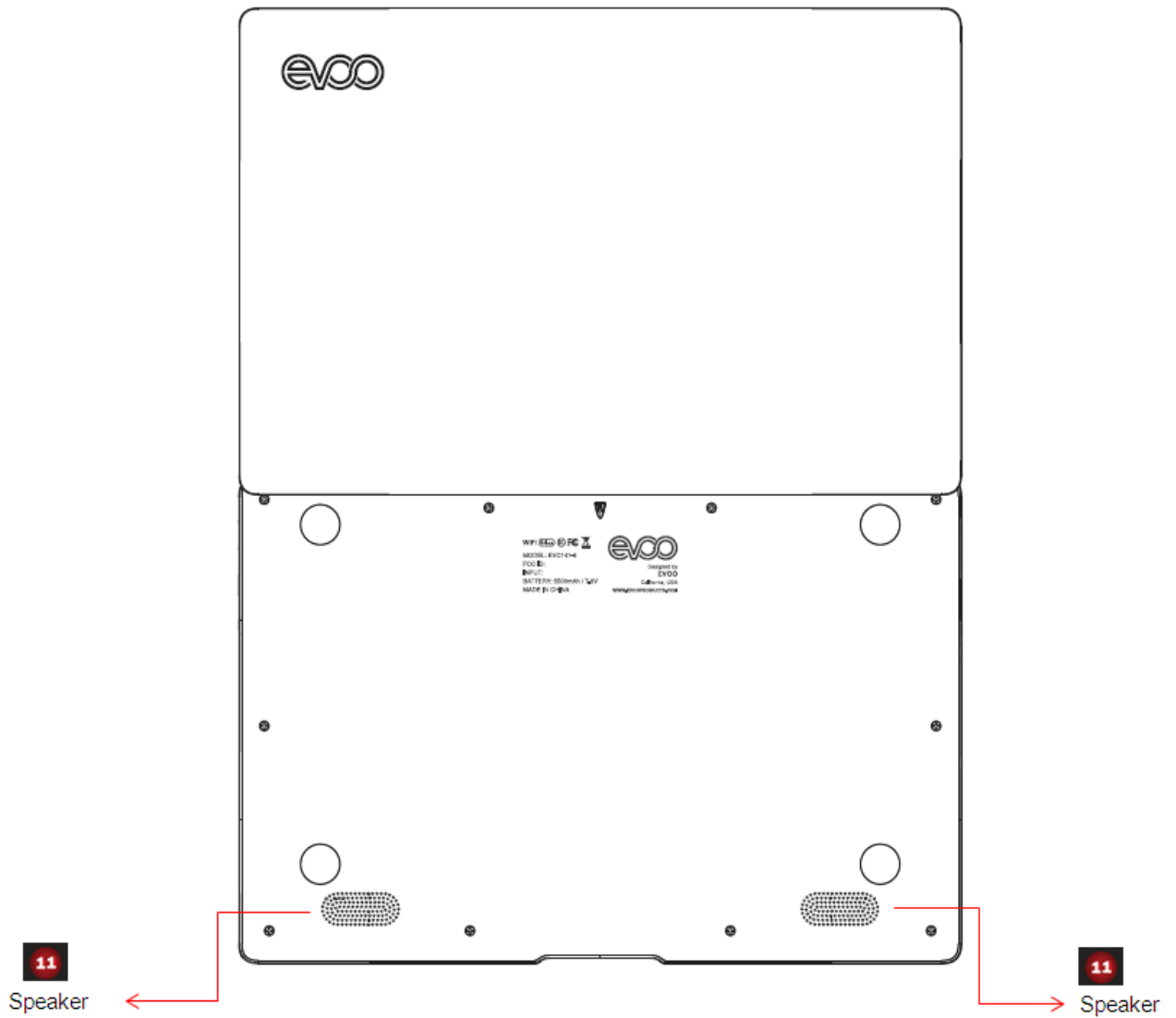


**08** Charging port: connects to 3.5mm DC adapter for charging

**09** USB3.0: connects to USB3.0&USB2.0 devices

**10** Mini HDMI port: connects to devices with HDMI port such as a TV or a display to output the laptop's video or audio.

## Bottom view



**11** speakers: left and right speakers for a output of audio

## **Chapter3 Getting to know more about your computer**

### **First use**

- 1.Connect the power cord to the ac power adapter.
- 2.Connect the ac power adapter to the ac power adapter jack of the computer
- 3.Plug the power cord into an electrical outlet.
- 4.Press the power button on the keyboard to boot the computer

### **Putting your computer into sleep state or shutting it down**

When you don't want to work with your computer, you can put it into sleep state or shut it down.or if you will be away from your computer for only a short time, you also can put the computer into sleep state. When the computer is in sleep state, you can quickly wake it to resume use and bypass the startup process.

To put the computer into sleep state, do either of the following:

- Click and select Sleep from the Start menu.
- Press power button on keyboard.

To wake the computer, do either of the following:

- Press the power button.
- Press any key on the keyboard.

To shut down the computer, do the following:

- click the  icon and choose the “shut down” option

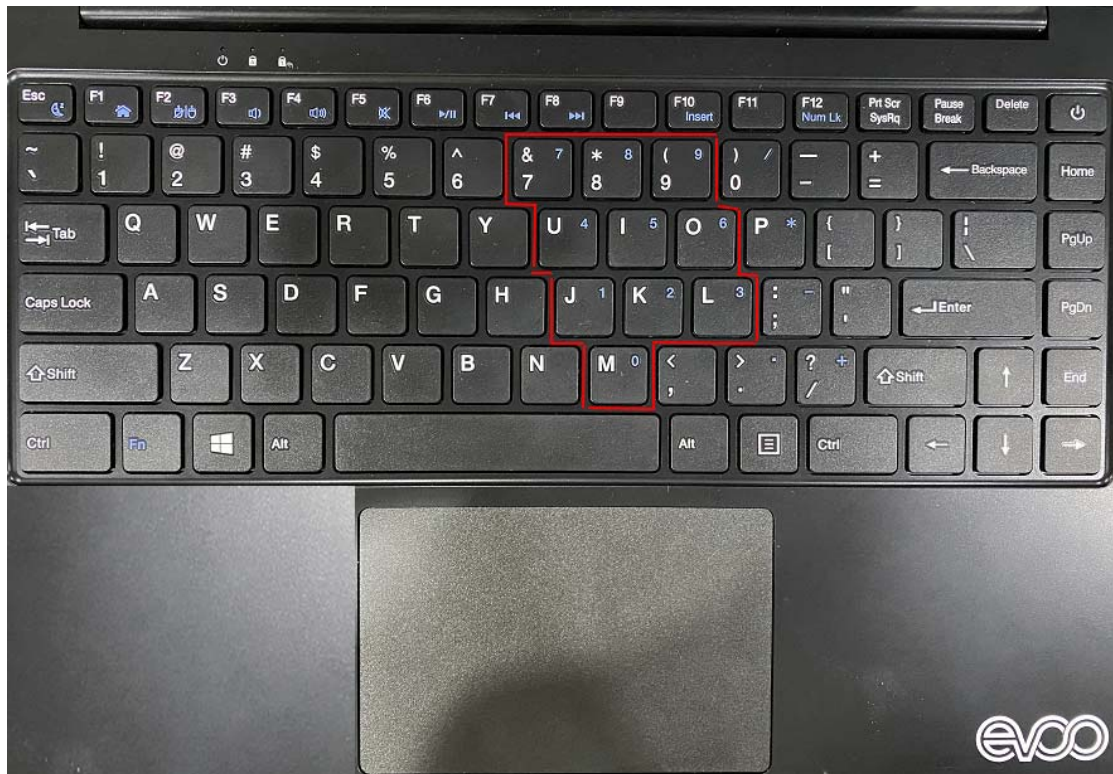
### **Using the touchpad**

- Touch: to move the cursor on the screen, slide your fingertip over the pad towards the direction in which you want the cursor to move.
- Left click button: Has the same function with that of the left mouse button on a conventional mouse
- Right click button: Has the same function with that of the right mouse button on a conventional mouse

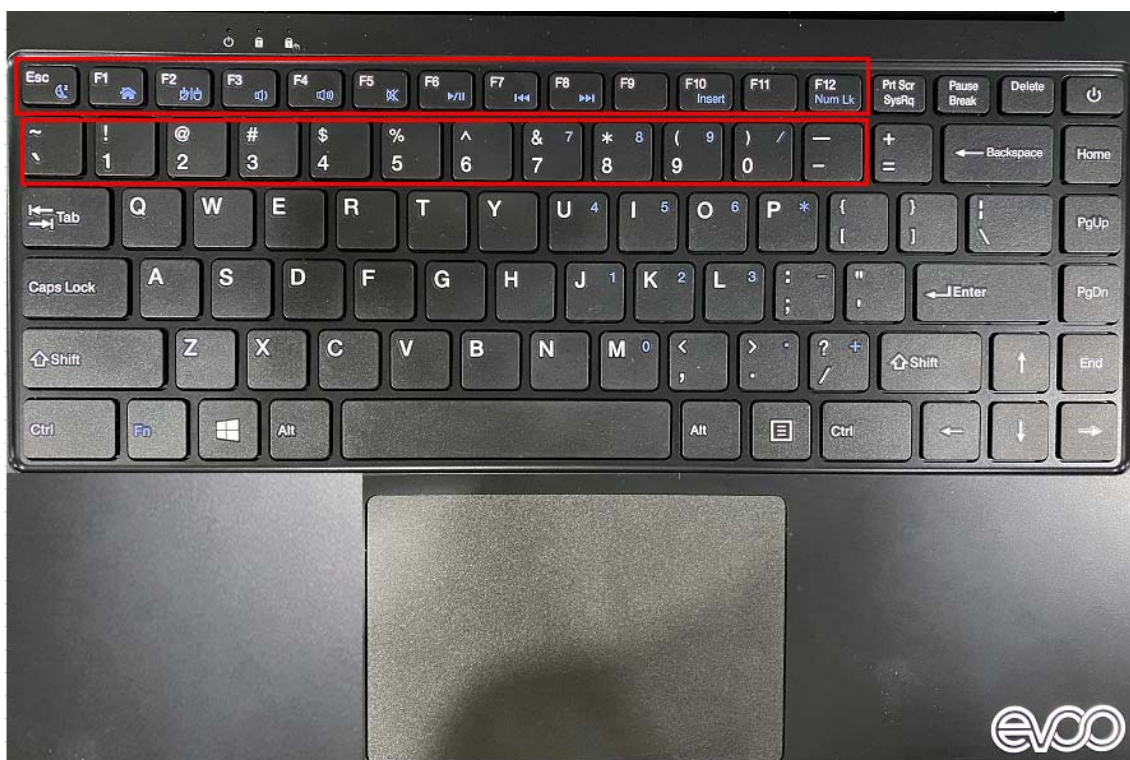
## Using the Keyboard

### •Numeric keypad

The keyboard has a separate numeric keypad besides the standard key part. To enable or disable the numeric keypad pressFn+F12



### •Function key combinations





Through the use of the function keys, you can change operational features instantly. To use this function, press and hold “Fn” and then press one of the function keys

|        |  |
|--------|--|
| Fn+Esc | Turn on or off the sleeping mode       |
| Fn+F1  | Enter or exit home page                |
| Fn+F2  | Enable or disable touchpad             |
| Fn+F3  | Volume down                            |
| Fn+F4  | Volume up                              |
| Fn+F5  | Turn on or off the volume              |
| Fn+F6  | Stop or pause the Windows media player |
| Fn+F7  | Fast rewind the Windows media player   |
| Fn+F8  | Fast forward the Windows media player  |
| Fn+F9  | NA                                     |
| Fn+F10 | Enable or disable insert function      |
| Fn+F11 | NA                                     |
| Fn+F12 | Enable or disable the numeric keypad   |
| Fn+~   | input ~                                |
| Fn+!   | input !                                |
| Fn+@   | input @                                |
| Fn+#   | input #                                |
| Fn+\$  | input \$                               |
| Fn+%   | input %                                |
| Fn+^   | input ^                                |
| Fn+&   | input &                                |
| Fn+*   | input *                                |
| Fn+(   | input (                                |
| Fn+)   | input )                                |
| Fn+—   | input —                                |
| Fn++   | input +                                |

## Connecting external devices

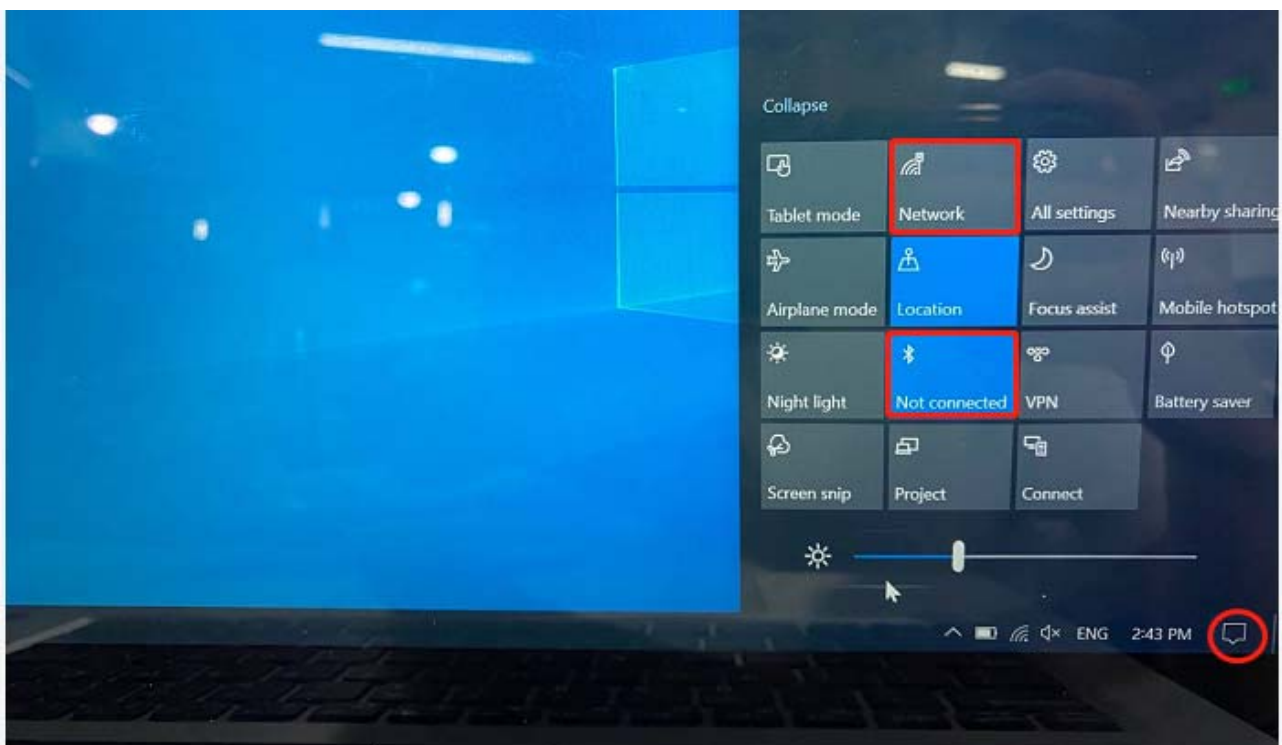
Your computer has a wide range of built-in features and connection capabilities. Which supports the following types of peripherals:

- USB2.0: connects to USB2.0 devices
- USB3.0: connects to USB3.0&USB2.0 devices
- Micro SD slot: connect to micro sd card
- Mini HDMI port: connects to devices with HDMI port such as a TV or a display to output the laptop's video or audio.

## Connecting a Bluetooth device and a WIFI AP

Since your computer has an integrated WIFI and Bluetooth RF module, that makes it possible for your device to connect with other BT device or a wireless point to transfer data without cables,such as with a BT speaker,cellphone,PADs

- Pair a BT device through clicking below icon
- connect a wifi AP through clicking below icon



This device complies with Part 15 of the FCC Rules. Operation is subject to the following two conditions:

- (1) This device may not cause harmful interference.
- (2) This device must accept any interference received, including interference that may cause undesired operation.

**NOTE:** This equipment has been tested and found to comply with the limits for a **Class B** digital device, pursuant to part 15 of the FCC Rules. These limits are designed to provide reasonable protection against harmful interference in a residential installation.

This equipment generates uses and can radiate radio frequency energy and, if not installed and used in accordance with the instructions, may cause harmful interference to radio communications. However, there is no guarantee that interference will not occur in a particular installation. If this equipment does cause harmful interference to radio or television reception, which can be determined by turning the equipment off and on, the user is encouraged to try to correct the interference by one or more of the following measures:

- Reorient or relocate the receiving antenna.
- Increase the separation between the equipment and receiver.
- Connect the equipment into an outlet on a circuit different from that to which the receiver is connected.
- Consult the dealer or an experienced radio/TV technician for help

**NOTE:** The manufacturer is not responsible for any radio or TV interference caused by unauthorized modifications to this equipment. Such modifications could void the user's authority to operate the equipment.

The SAR limit adopted by FCC is 1.6 W/kg averaged over one gram of tissue. The highest SAR value reported to the FCC for this device type complies with this limit. The highest SAR value reported to the FCC for this device type when using in portable exposure conditions is 0.684 W/kg.