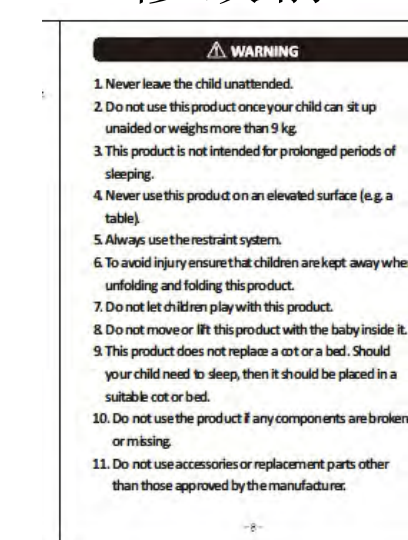
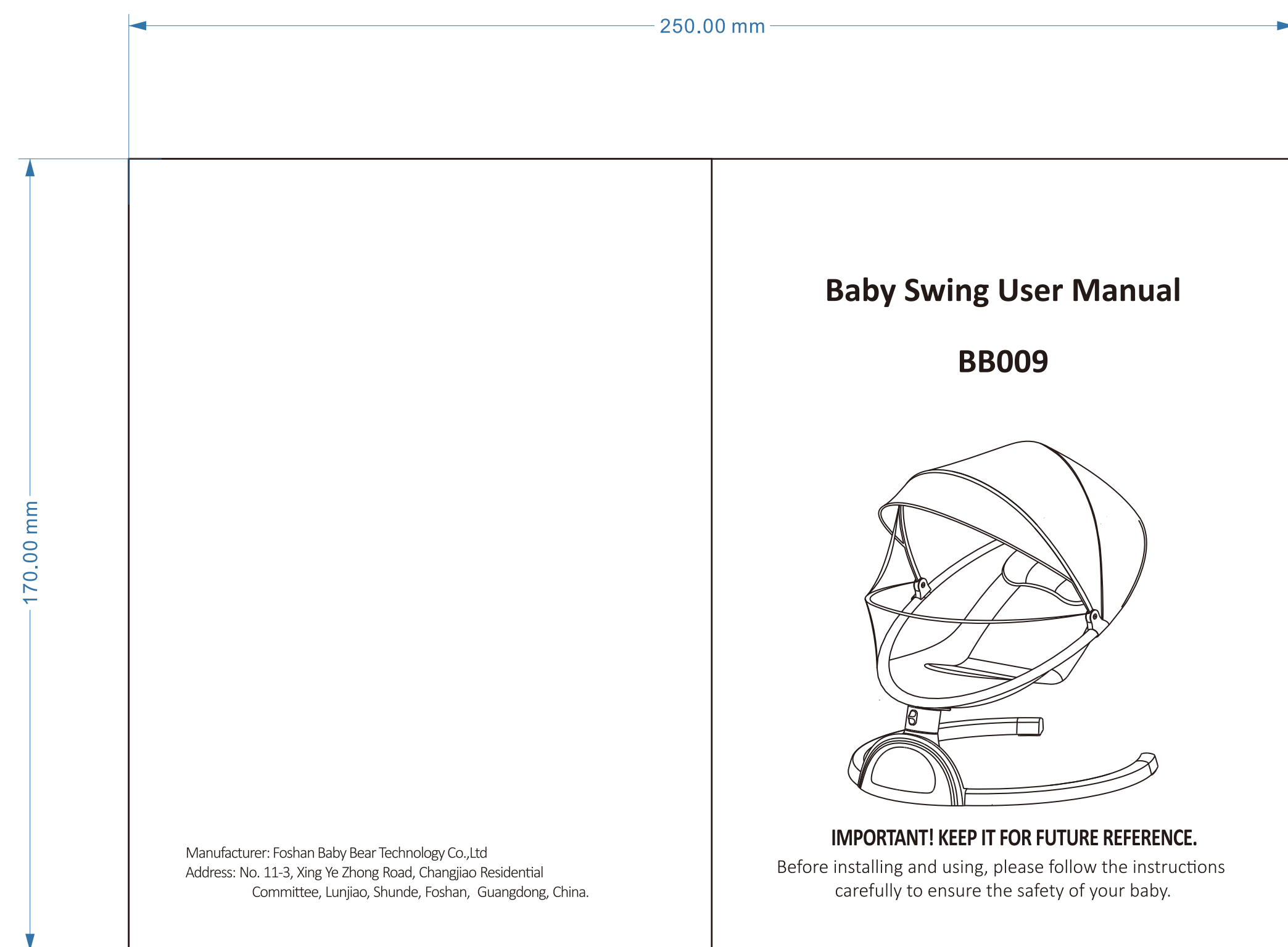
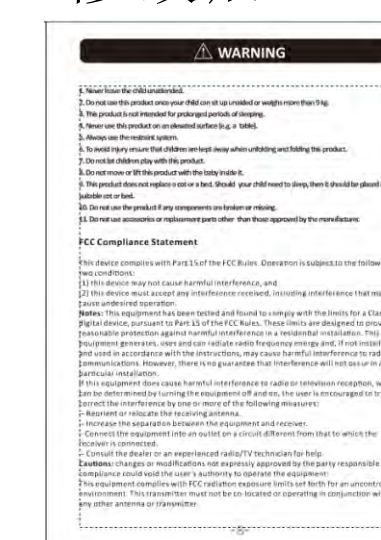


修改前

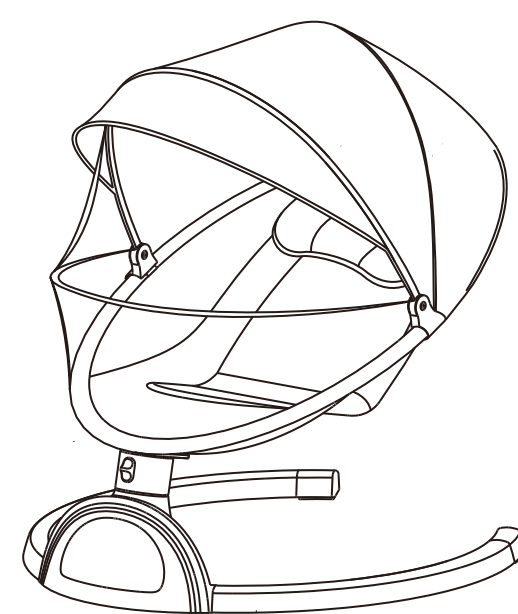


修改后



Baby Swing User Manual

BB009



IMPORTANT! KEEP IT FOR FUTURE REFERENCE. Before installing and using, please follow the instructions carefully to ensure the safety of your baby.

Manufacturer: Foshan Baby Bear Technology Co., Ltd. Address: No. 11-3, Xing Ye Zhong Road, Changjiao Residential Committee, Lunjiao, Shunde, Foshan, Guangdong, China.

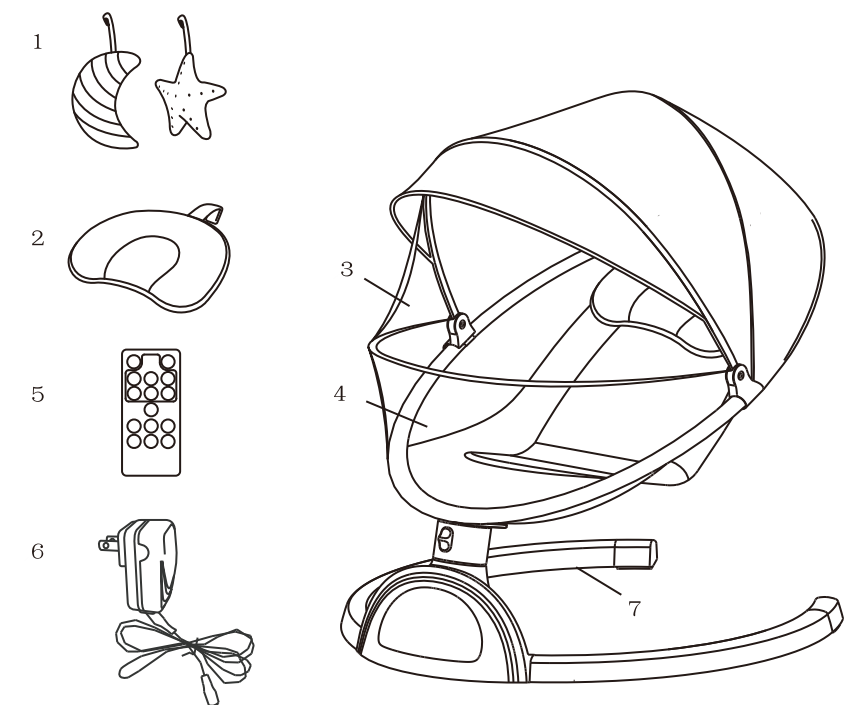
Product Contents: Product Introduction, Product Specification, Product Features, Parts Instruction, Installation, For Base Bracket, For Pillow, For Canopy With Toys, Safety Belt Instruction, User Instruction, Button Description, Motion Lock, Remote Control, Power Supply, WARNING, Maintenance, Clean, Troubleshooting, After-sales Service.

After-sales Service: Thank you for purchasing our products. For your due rights and interests, please take good care of the warranty card. Improper use, loss or damage of warranty card, damage caused by natural disasters and other irresistible forces.

Clean & Maintenance: Clean the base bracket and seat frame with wet cloth and a mild detergent. Washable fabric. Seat fabric: Clean it with wet cloth and a mild detergent, and dry it. Canopy: Take it off and put a little cleaner, wash it gently by hands.

Product Introduction: Product Specification: Product Name: BABY SWING CHAIR, Model Number: BB009, Input Voltage: 100-240V~, Output Voltage: 5V=, Output Current: 1A, Frequency: 50/60Hz, Application: Children up to a weight of 9 kg or unable to sit up unaided.

- Parts Instruction: 1) Plush toy\*2, 2) Pillow\*1, 3) Mosquito net with canopy\*1, 4) Seat frame\*1, 5) Remote controller, 6) Adaptor\*1, 2 meters of USB cable\*1, 7) Base bracket\*1.



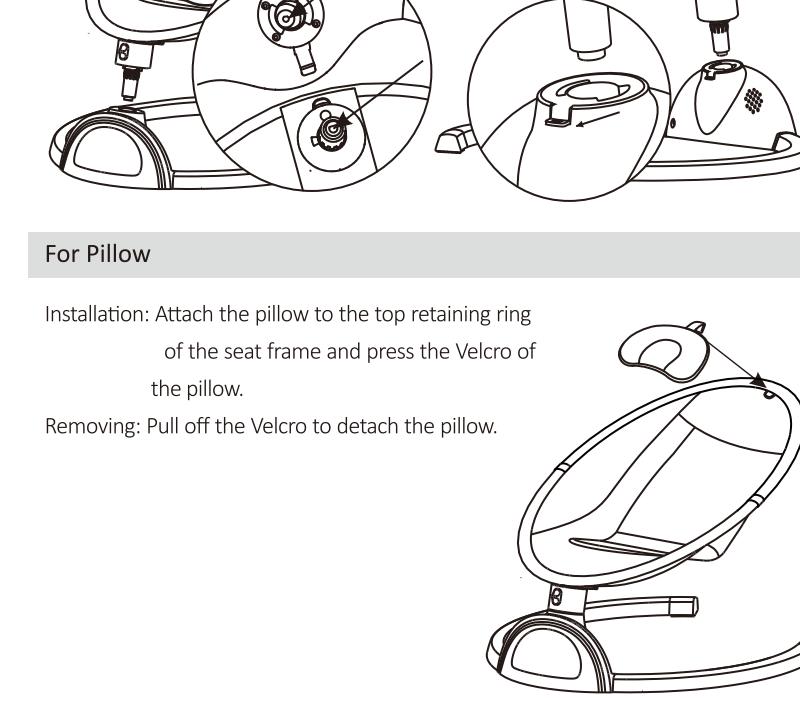
- WARNING: 1. Never leave the child unattended. 2. Do not use this product once your child can sit up unaided or weighs more than 9 kg. 3. This product is not intended for prolonged periods of sleeping. 4. Never use this product on an elevated surface (e.g. a table). 5. Always use the restraint system. 6. To avoid injury ensure that children are kept away when unfolding and folding this product. 7. Do not let children play with this product. 8. Do not move or lift this product with the baby inside it. 9. This product does not replace a cot or a bed. Should your child need to sleep, then it should be placed in a suitable cot or bed. 10. Do not use the product if any components are broken or missing. 11. Do not use accessories or replacement parts other than those approved by the manufacturer.

FCC Compliance Statement: This device complies with Part 15 of the FCC Rules. Operation is subject to the following two conditions: (1) this device may not cause harmful interference, and (2) this device must accept any interference received, including interference that may cause undesired operation.

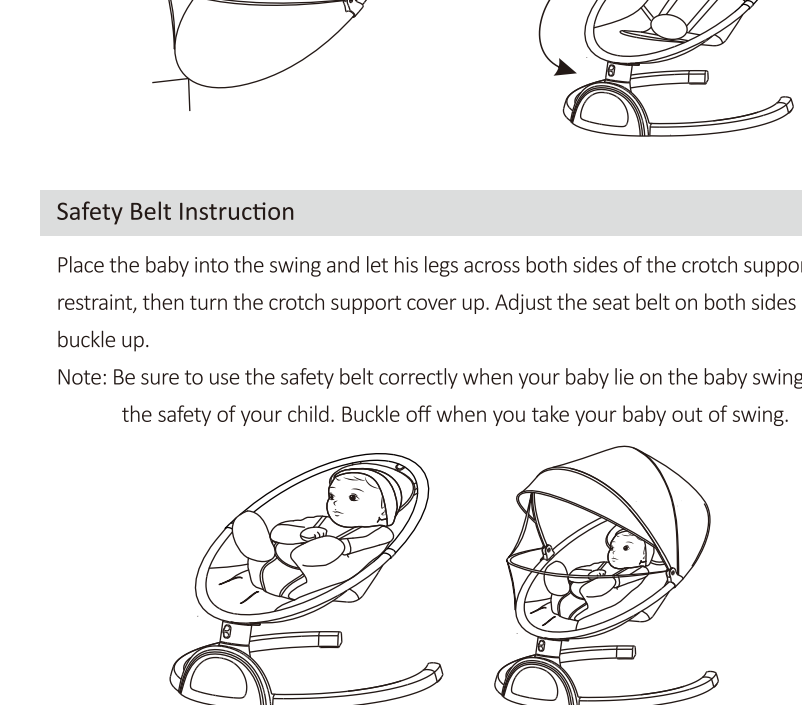
- Remote Control: Power on/off, Play/pause, Time setting, Previous song, Built-in music/Bluetooth music, Next song, Volume up, Volume down, Five swing gears, Sleep mode: press to enter sleep mode/gear 2 with timer 15 minutes, Stop swing: press to stop swing, and press any key to resume swing.

- Power Supply: 1. DC plug can be inserted into 100-240V ~ 50 / 60Hz AC power supply. 2. Adapter output parameters: voltage is 5V and current is 1A. P5. Battery compartment is not included in all models. Please confirm with your local dealer for full details. Batteries Installation: 1. Find the battery compartment location firstly, which is with screen printing battery icon. See figure ①. 2. Unscrew the battery compartment and remove the battery cover. See figure ②. 3. Put in 4 pcs of AAA alkaline batteries. See figure ③. 4. Put the battery cover back and screw it tightly. See figure ④.

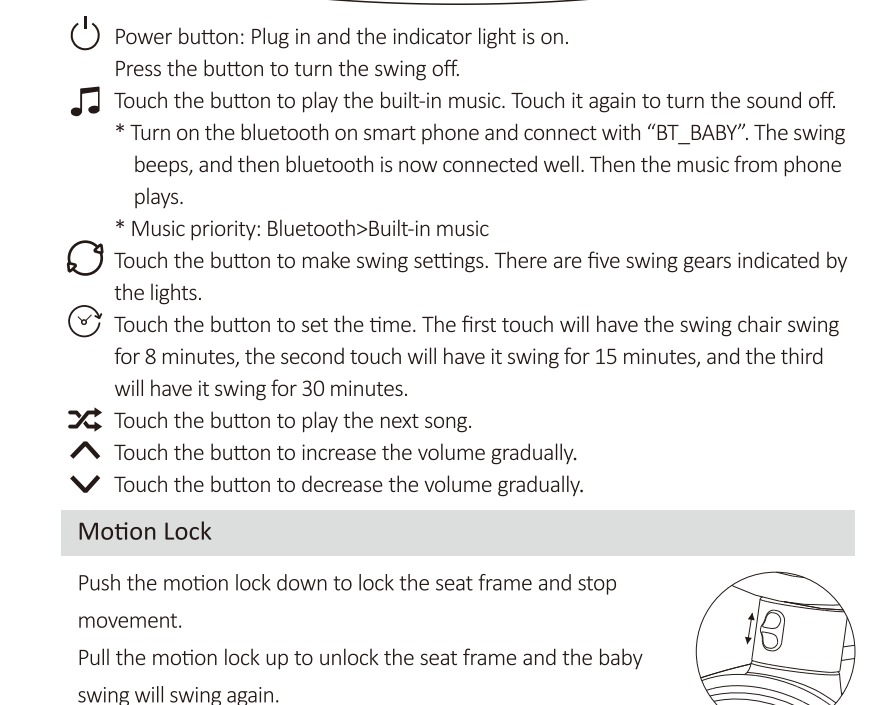
- Installation: For Base Bracket: Assembling: Put the frame in the base with "O" shape components aligned. Disassembling: Pull out of the sheet metal and pull up the seat frame. For Pillow: Installation: Attach the pillow to the top retaining ring of the seat frame and press the Velcro of the pillow. Removing: Pull off the Velcro to detach the pillow.



- For Canopy With Toys: Installation: Attach the toys on canopy and fasten the clips to the pipe of the seat frame. Attach the string of mosquito net to the bottom of the seat frame by pressing the Velcro around the joint of seat frame. Dismantling: Put out of the clips to remove the canopy. Safety Belt Instruction: Place the baby into the swing and let his legs across both sides of the crotch support restraint, then turn the crotch support cover up. Adjust the seat belt on both sides and buckle up. Note: Be sure to use the safety belt correctly when your baby lie on the baby swing for the safety of your child. Buckle off when you take your baby out of swing.



- User Instruction: Button Description: Power button: Plug in and the indicator light is on. Press the button to turn the swing off. Music button: Touch the button to play the built-in music. Touch it again to turn the sound off. \* Turn on the bluetooth on smart phone and connect with "BT\_BABY". The swing beeps, and then bluetooth is now connected well. Then the music from phone plays. \* Music priority: Bluetooth-Built-in music. Touch the button to make swing settings. There are five swing gears indicated by the lights. Touch the button to set the time. The first touch will have the swing chair swing for 8 minutes, the second touch will have it swing for 15 minutes, and the third will have it swing for 30 minutes. Touch the button to play the next song. Touch the button to increase the volume gradually. Touch the button to decrease the volume gradually.



备注：  
材质：80g双胶纸  
颜色：黑白印刷  
结合方式：骑马钉  
页数：12p

佛山市熊宝宝科技有限公司

产品机型 BB009

名称 通用英文说明书

材料 80g双胶纸

图号

Table with columns: 标记, 处数, 更改文件号, 签字, 日期. Rows for Design, Check, Review, and Craft.

Table with columns: 阶段标记, 版本, 重量, 比例. Values: S, A, B, A1, 1:1.

共 张 第 张