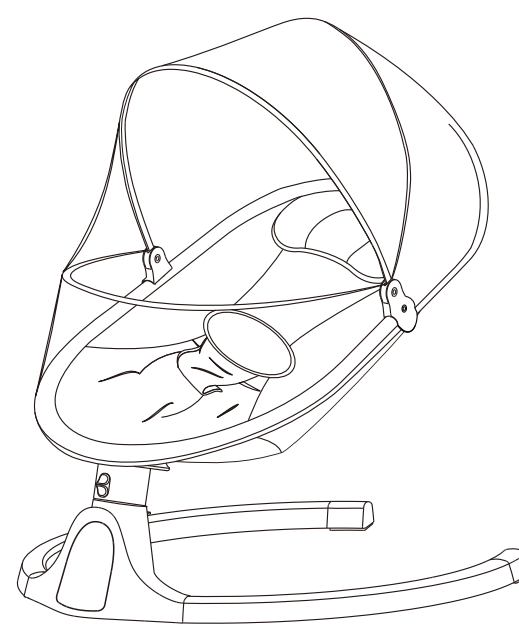


250.00 mm

170.00 mm

### Baby Swing User Manual BB008



**IMPORTANT! KEEP IT FOR FUTURE REFERENCE.**  
Before installing and using, please follow the instructions carefully to ensure the safety of your baby.

**Foshan Baby Bear Technology Co., Ltd**  
Add: No. 11-3, XingYeZhong Road, Changjiao Residential Committee, Lunjiao, Shunde, Foshan, Guangdong, China.  
Tel: 86 0757-27887286

#### Product Contents

- Product Introduction ..... 2
- Product Specification ..... 2
- Product Features ..... 2
- Parts Instruction ..... 3
- Installation ..... 4
- For Base Bracket ..... 4
- For Pillow and Seat Cover ..... 4
- For Canopy With Toys ..... 5
- Safety Belt Instruction ..... 5
- User Instruction ..... 6
- Button Description ..... 6
- Motion Lock ..... 6
- Remote Control ..... 7
- Power Supply ..... 7
- WARNING ..... 7
- WARNING ..... 8
- Clean & Maintenance ..... 9
- Clean ..... 9
- Maintenance ..... 9
- Troubleshooting ..... 9
- After-sales Service ..... 10

#### After-sales Service

Thank you for purchasing our products. For your due rights and interests, please take good care of the warranty card. If there is any quality problem, please contact with the distributor.

#### Note:

1. From the purchase date, normal users can enjoy one year's free maintenance service for the circuit board components and one year's free maintenance service for the whole machine.
2. Other consumables and accessories are not covered by the warranty.
3. Please show the warranty card and purchase certificate or invoice to be valid.

#### Non-warranty Coverage:

1. Improper use
2. Loss or damage of warranty card
3. Damage caused by natural disasters and other irresistible forces

Please keep the warranty card well.

#### Warranty Card

Product Model	Customer Name
Product Name	Customer Phone Number
Purchasing Date	Fault Description
Customer Address	

#### Clean & Maintenance

##### Clean

1. Clean the base bracket and seat frame with wet cloth and a mild detergent. Dry thoroughly then. Please do not use corrosive cleaner.
2. Removable and washable fabric.
  - Seat fabric: Clean it with wet cloth and a mild detergent, and dry it.
  - Canopy: Take it off and put a little cleaner, wash it gently by hands. Rinse it with clean water, and then hang it to dry, avoiding exposure to the sun.
- Pillow: Tear the Velcro off and take the pillow off. Put a little cleaner, wash it gently by hands, and then rinse it with clean water. Hang it avoiding sun exposure.

##### Maintenance

1. Please check this baby swing regularly. Make sure of each part is well connected and well installed. Stop using for poor connection and correct/install it again if necessary.
2. This product contains electronic components, which shall not be used in water or in a humid environment. Please ensure the product is dry, and store it in a cool and dry place, avoiding direct sunshine for a long time.

#### Troubleshooting

Fast self-inspection solution below

No.	Issue	Solution
1	Not energized	1. Check whether the adapter and DC cable are firmly connected. If loose, connect them firmly. 2. DC cable may be damaged. Please contact customer service to replace DC cable.
2	The power lamp keeps flashing/ high voltage alarms	Use suitable adapter with an output voltage of 5V, 1A
3	Motion lock stuck	Check the motion lock. Pull it up to unlock the seat frame.
4	Overswing/Strike	Power off and restart it again

Note: For other trouble, please contact our customer service for help. Never disassemble and repair the swing by yourself.

#### Product Introduction

##### Product Specification:

Product Name:	Multi-Function Electric Swing
Model Number:	BB008
Input Voltage:	100-240V~
Output Voltage:	5V~
Output Current:	1A
Frequency:	50/60Hz
Application:	Children up to a weight of 9 kg or unable to sit up unaided
Main Material:	100% polyester fiber, aviation aluminum base bracket

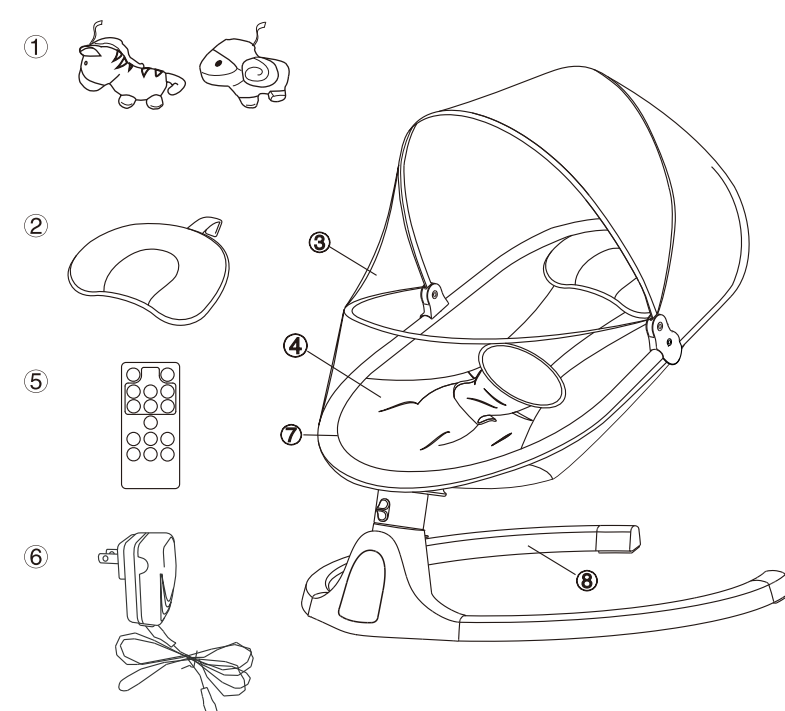
##### Product Features:

1. Swinging from side to side, with five gears mimicking human movement.
2. Protecting baby's spine design on the basis of human engineering.
3. Power supplied by safe 5V low voltage adapter.
4. One-button installation and disassembly, simple and convenient to use.
5. Seat cover made of environmental-friendly super soft fabric and non-textile, cozy, breathable and safe & removable and machine washable seat fabric.
6. Made of aluminum alloy base with light weight and strong hardness guaranteeing safety for baby.
7. Controlled by front panel or remote controller, easy to operate
8. With motion lock and safety belt for protection.
9. With built-in soft nature sounds & Bluetooth enabled for music.

#### Parts Instruction

Make sure that all of the following parts listed are included in the box. If any part is missing, please contact us before operating. No tools are required for assembly.

- |                               |                                       |
|-------------------------------|---------------------------------------|
| 1) Plush toy*2                | 5) Remote controller                  |
| 2) Pillow*1                   | 6) Adaptor*1, 2 meters of USB cable*1 |
| 3) Mosquito net with canopy*1 | 7) Seat frame*1                       |
| 4) Seat cover                 | 8) Base bracket*1                     |



#### WARNING

1. Never leave the child unattended.
2. Do not use the product on any child over 18 months or weighs more than 9kg.
3. The product is not intended for prolonged periods of sleeping.
4. Never use this product on an elevated surface (e.g. a table).
5. Always use the restraint system.
6. To avoid injury ensure that children are kept away when unfolding and folding the product.
7. Do not let children play with the product.
8. Do not move or lift the product with the baby inside it.
9. The product does not replace a car seat. Should your child need to sleep, then it should be used in a suitable car seat.
10. Do not use the product if any components are broken or missing.
11. Do not use accessories or replacement parts other than those approved by the manufacturer.

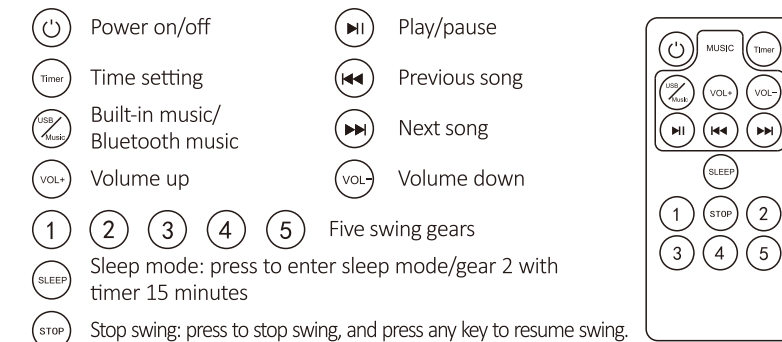


**FALL and STRANGULATION HAZARDS** Infants have suffered head injuries falling from swings and have strangled in straps.  
• ALWAYS use restraints. Adjust to fit snugly.  
• STOP using product when infant attempts to climb out (approximately 9 months).  
• Stay near and watch infant during use. This product is not safe for unsupervised use or unattended sleep.

#### FCC Compliance Statement

This device complies with Part 15 of the FCC Rules. Operation is subject to the following two conditions:  
(1) The device may not cause harmful interference, and  
(2) The device must accept any interference received, including interference that may cause undesired operation.  
Notes: This equipment has been tested and found to comply with the limits for a Class B digital device, pursuant to Part 15 of the FCC Rules. These limits are designed to provide reasonable protection against harmful interference in a residential installation. This equipment generates, uses and can radiate radio frequency energy and, if not installed and used in accordance with the instructions, may cause harmful interference to radio communications. However, there is no guarantee that interference will not occur in a particular installation. If the equipment does cause harmful interference to radio or television reception, which can be determined by turning the equipment off and on, the user is encouraged to try to correct the interference by one or more of the following measures:  
- Reorient or relocate the receiving antenna.  
- Increase the separation between the equipment and receiver.  
- Connect the equipment into an outlet on a circuit different from that to which the receiver is connected.  
- Consult the dealer or an experienced radio/TV technician for help.  
Caution: Changes or modifications not expressly approved by the party responsible for compliance could void the user's authority to operate the equipment.  
This equipment complies with FCC radiation exposure limits set forth for an uncontrolled environment. This transmitter must not be co-located or operating in conjunction with any other emitting or transmitting device.

#### Remote Control



#### Power Supply

1. DC plug can be inserted into 100-240V~50/60Hz AC power supply.
2. The DC interface can be connected to the power bank (the power bank output is 5V=1A).
3. Adapter output parameters: voltage is 5V and current is 1A.
4. Transformers used with the infant swing are to be regularly examined for damage to the cord, plug, enclosure and other parts, and in the event of such damage, they shall not be used.

**P.S. Battery compartment is not included in all models. Please confirm with your local dealer for full details.**

#### Batteries Installation

1. Find the battery compartment location below, which is with a cover printing battery icon. See figure ①.
2. Unscrew the battery compartment and remove the battery cover. See figure ②.
3. Put 4 x AA alkaline batteries. See figure ③.
4. Put the battery cover back and close it tightly. See figure ④.

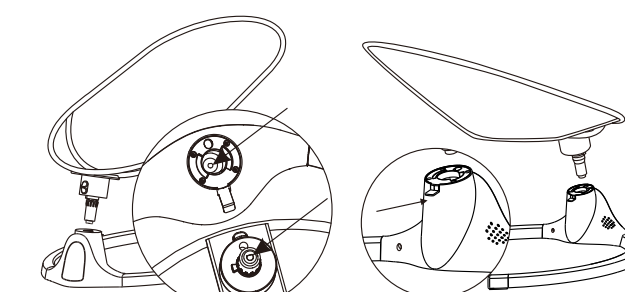
#### WARNING

- Do not use new batteries should not be mixed.
- Remove batteries when playing the device for a prolonged period of time.
- Make sure standard carbon or nickel-cadmium or nickel-metal hydride batteries should not be used.
- The power terminals must not be short-circuited.
- Do not use adapters other than those supplied with this product to power the product.
- Keep children away from working adapter.
- Check the adapter cable connection regularly.

#### Installation

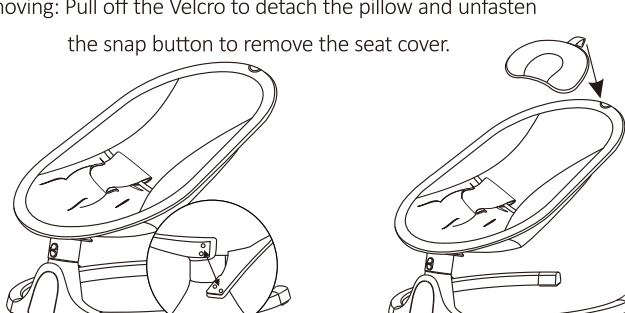
##### For Base Bracket

Assembling: Put the frame in the base with "O" shape components aligned.  
Disassembling: Pull out of the sheet metal and pull up the seat frame.



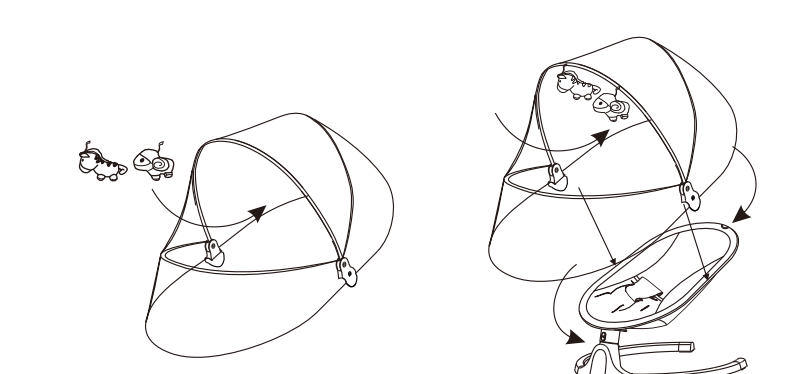
##### For Pillow and Seat Cover

Installation: Put the seat cover on the seat frame and fasten the snap button on the back.  
Attach the pillow to the top retaining ring of the seat frame and press the Velcro of the pillow.  
Removing: Pull off the Velcro to detach the pillow and unfold the snap button to remove the seat cover.



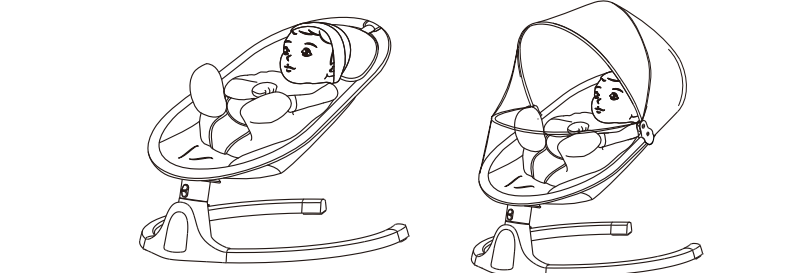
#### For Canopy With Toys

Installation: Attach the toys on canopy and fasten the clasps to the pipe of the seat frame, and attach mosquito net to the bottom of the seat frame.  
Disassembling: Put out of the clasps to remove the canopy.



#### Safety Belt Instruction

Place the baby into the swing and let his legs across both sides of the crotch support restraint, then turn the crotch support cover up. Adjust the seat belt on both sides and buckle up.  
Note: Be sure to use the safety belt correctly when your baby lie on the baby swing for the safety of your child. Buckle off when you take your baby out of swing.



#### User Instruction

##### Button Description

ON/OFF: Touch this button and the indicator light is on. Touch it again to turn the swing off.

SWING: Touch the button to make swing gear settings. There are five swing gears indicated by digital light: 0-1-2-3-4-5.

TIMER: Touch the button to set the time. The first touch will have the swing chair swing for 8 minutes, the second touch will have it swing for 15 minutes, and the third will have it swing for 30 minutes.

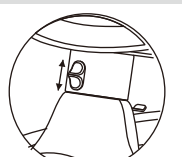
MUSIC: Touch the button to play the built-in music. Touch it again to turn the sound off.  
• Turn on the Bluetooth on smart phone and connect with "BT\_BABY". The swing beeps, and then Bluetooth is now connected well. Then the music from cellphone plays.  
• Music priority: Bluetooth>Built-in music

VOLUME+: Touch the button to increase the volume gradually.

VOLUME-: Touch the button to decrease the volume gradually.

##### Motion Lock

Push the motion lock down to lock the seat frame and stop movement.  
Pull the motion lock up to unlock the seat frame and the baby swing will swing again.



# 佛山市熊宝宝科技 有限公司

产品机型 BB008

名称 英文说明书

材料 80g 双胶纸

图号

标记	处数	更改文件号	签字	日期
设计			标准化	
校对			批准	
审核				
工艺			日期	

阶段标记	版本	重量	比例
S A B	A1		1:1
共 张		第 张	

借 (通) 用件登记

描 图

校 描

旧底图总号

签 字

日 期