

## Product specification

Manufacturer: Foshan Shunke Electronics Co., LTD

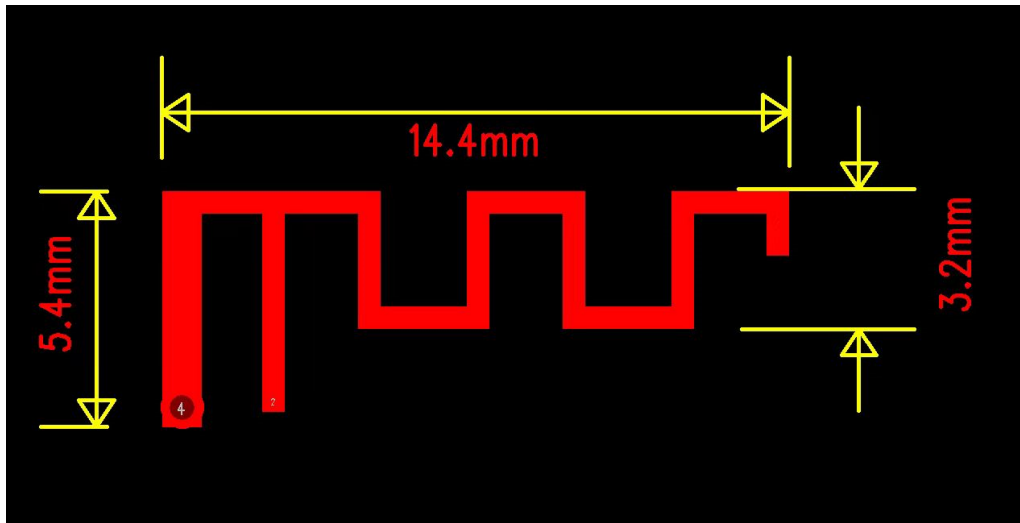
Address: No. 15-6,Chuangye Road,Sanhongqi community,Beijiao Town,Foshan

### Quick Reference Data

	Antenna module on the system board	
Antenna type	PCB	
Frequency	2.402--2480MHZ	
Ant. Port Input Pwr. (dBm)	0(Typ. BT class 2 output power)	
Tot. Rad.Pwr. (dBm)	-2.3 (Input pwr?loss pwr)	
Peak EIRP (dBm)	1.3	
Directivity (dBi)	1(all direction antenna)	
Efficiency (dB)	-2.3(58.5%)	
Gain(dBi)	1.7(Peak Gain XZ-plane)	
Maximum Power(dBm)	1.3(XY-plane)	
Minimum Power(dBm)	-4(XY-plane)	
Avg. Power (dBm)	-0.5(XY-plane)	
Max/Min Ratio(dB)	5.3(XY-plane)	
Max/Avg Ratio(dB)	1.8(XY-plane)	
Min/Avg Ratio(dB)	-3.5(XY-plane)	
Average Gain (dB)	-0.5(Avg Gain XY-plane)	

All the technical data and information contained herein are subject to change without prior notice

### Antenna Layout & module on the system board



### Antenna Gain

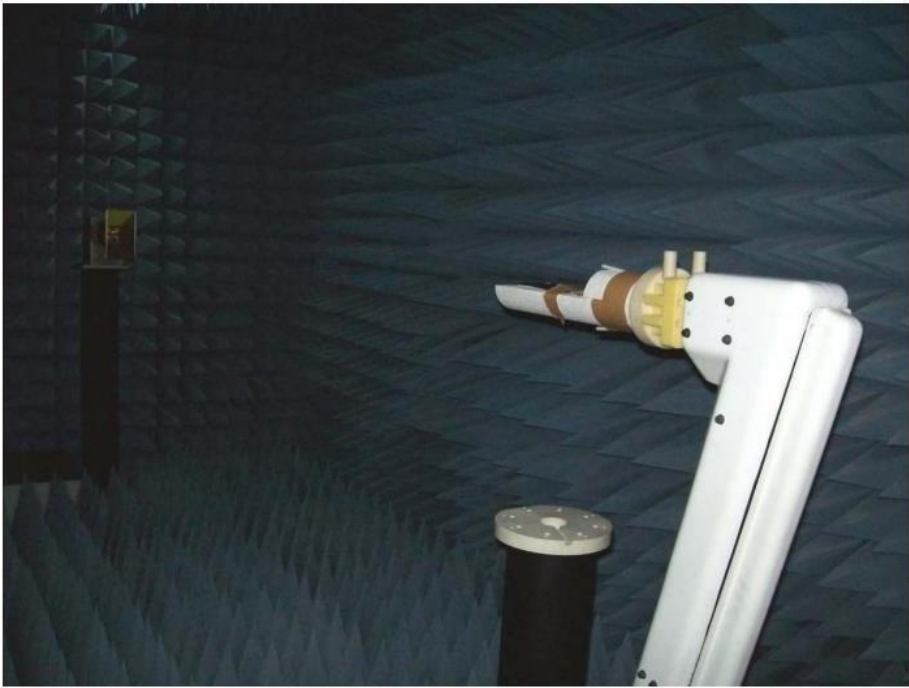
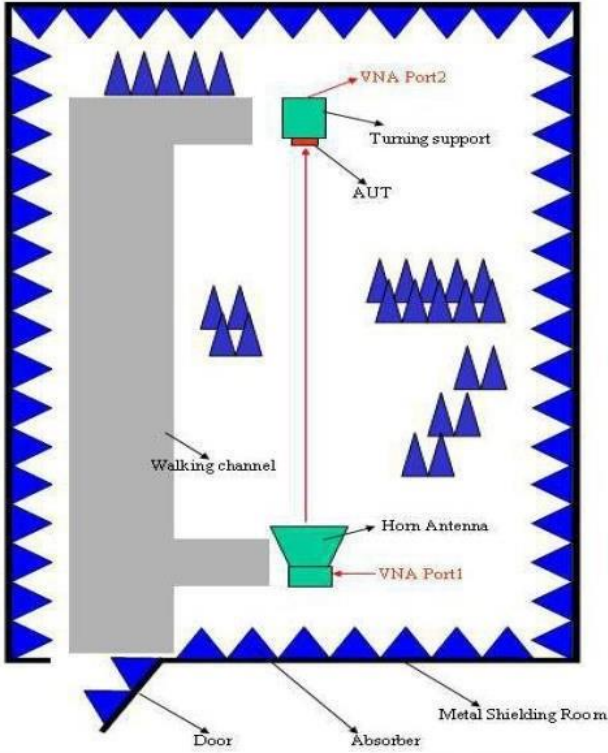
### Gain Table

Unit in dBi @2.44GHz	XY-plane		XZ-plane		YZ-plane		Efficiency
	Peak	Avg.	Peak	Avg.	Peak	Avg.	
Module Board	1.3	-0.5	1.7	-3.8	1.1	-3.0	58.5%

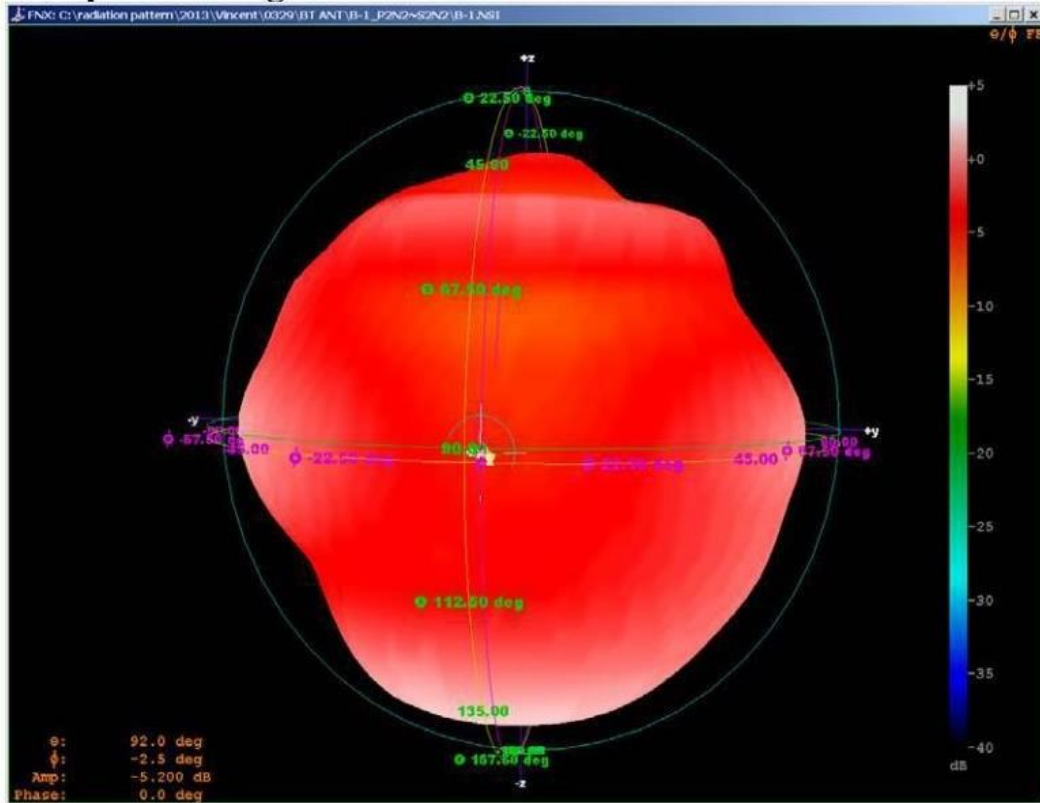
# Return Loss



# The Environment of Antenna Radiation Pattern

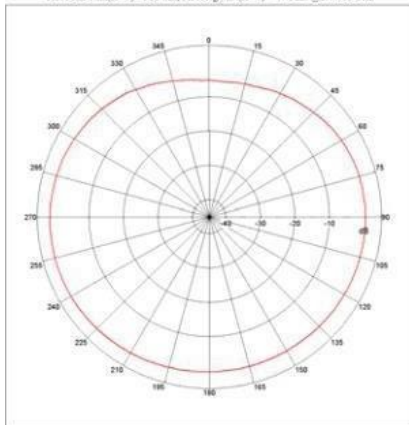


# 3D radiation pattern diagram



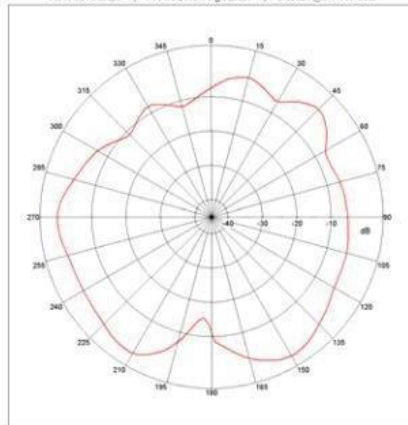
## XY-plane

Far-field Power Distribution(H+V) on X-Y Plane  
 Plot Peak Gain(H+V)= 1.35 dB; Plot AvgGain(H+V)=-0.48dB @2.44000 GHz



## XZ-plane

Far-field Power Distribution(H+V) on X-Z Plane  
 Plot Peak Gain(H+V)= 1.68 dB; Plot AvgGain(H+V)=-3.83dB @2.44000 GHz



## YZ-plane

Far-field Power Distribution(H+V) on Y-Z Plane  
 Plot Peak Gain(H+V)= 1.11 dB; Plot AvgGain(H+V)=-2.95dB @2.44000 GHz

